

Construction, Design and Management Regulations 2015

The Contractor's attention is drawn to the abnormal risks identified below, annotated on the drawing and explained in the associated design risk registers.

Legend

You Must Not Do

Hazard or Danger

You Must Do

Caution

Abnormal Risks Identified:
1. No Abnormal Risks Identified

- Notes
1.

If in doubt, ask the Project Lead.
2.

Do not scale this drawing.
3.

All dimensions are in millimetres unless stated otherwise.
4.

This drawing is to be read in conjunction with all other relevant drawings and specifications.
5.

All Proprietary items to be installed in strict compliance with manufacturers instructions and recommendations.

Ventilation Notes

1.

The ventilation ductwork installation shall comply with the mechanical Performance Specification and all relevant legislation
2.

The design shown on this drawing is indicative only and the mechanical Contractor shall be responsible for the design /sizing of the services and co-ordination with the building fabric and other services in the building
3.

All invert levels shown from the finished floor level of the storey indicated to the centerline of the duct unless stated otherwise
4.

All ductwork exceeding 1:4 ratio (depth:width) will require splitters
5.

Location of access door in ductwork to comply with DW/144 Table 20 (page 92) and TR/19 Table 3 (page 13). As a minimum to be provided adjacent all fire dampers, volume control dampers and heater batteries, either side of bends and at maximum 12m intervals on ductwork runs.
6.

All ductwork to be identified in accordance with BS 1710
7.

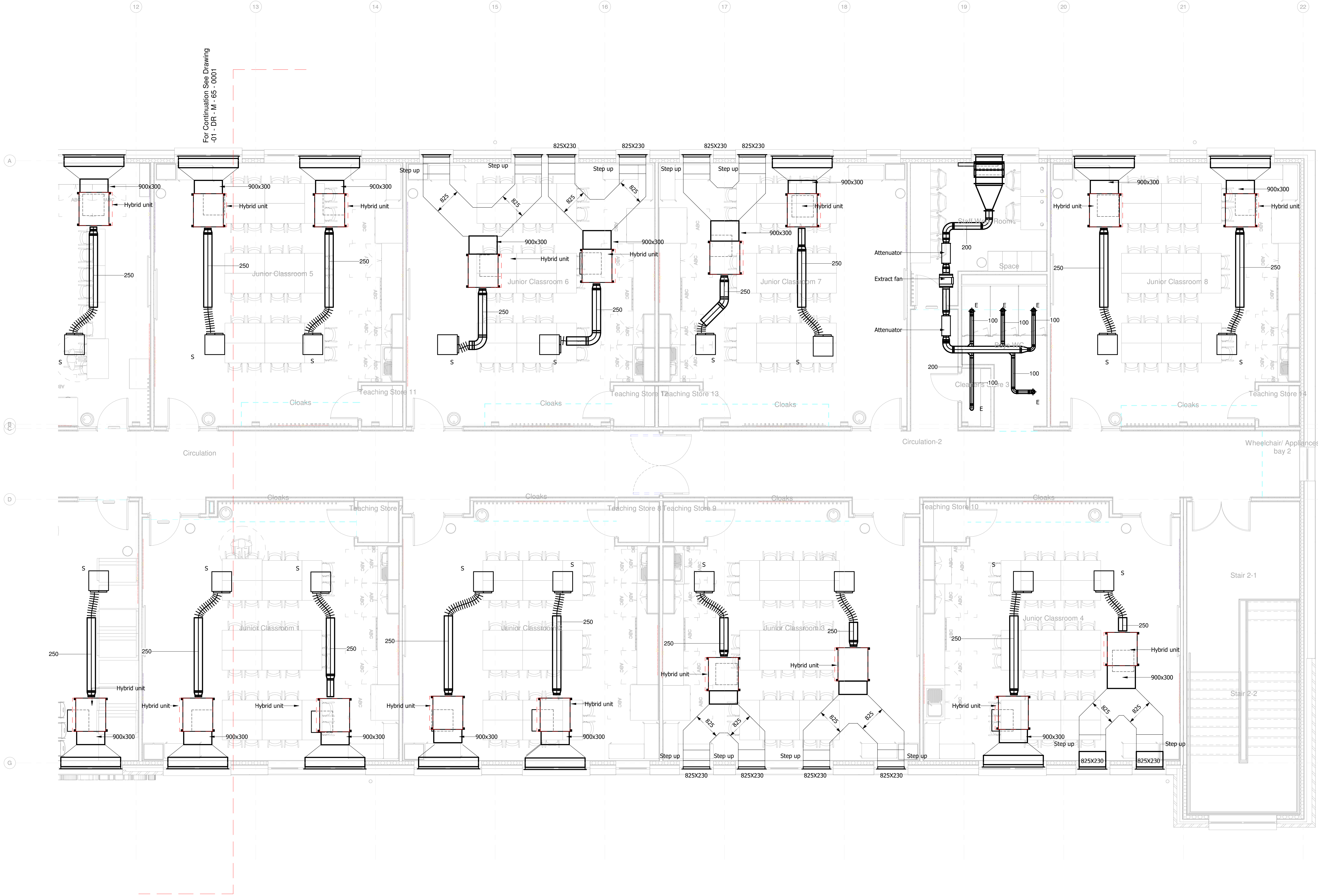
All supply & return air ductwork running in risers, ceiling voids and plant spaces will be insulated with the exception of extract ductwork from which heat is not recovered and supply ductwork carrying tempered air in open spaces it is serving and associated return air ductwork will not be insulated.
8.

All louvres will be provided with bird mesh. Access panels provided to be installed in connecting ductwork to allow cleaning.
9.

Flexible connections to be provided on either side of each fan.
10.

All ductwork to be manufactured, installed, tested and commissioned in compliance with HVCA DW144, DW143, DW172 and CIBSE commissioning codes.
11.

All Ductwork penetrating a fire compartment / structure shall be provided with a fire / smoke damper in accordance with the building fire strategy.



1 Ventilation 01-DR-M-65-0002

1 : 50

p02	Issued for Full CPs - Updated in line with Caledonian Comments	RTL	13.08.20
P01	Issued for Full CPs	RTL	03.07.2020
Rev	Amendments	Rev'd By	Date

Client:



Project
Buckton Fields Primary School

Title
First Floor
Proposed Ventilation
Layout (2 of 2)

Drawing Number (Project, Originator, Volume, Level, Type, Role, Class & No.)

F50816 - WLK - 00 - 01 - DR - M - 65 - 0002

Internal Project Reference

190280

Suitability | Suitable For

S4 - Suitable for Stage Approval

Scale
As indicated @ A0 Jun 20 P02

Project Lead
MC

Drawn
RTL

Checked
MAB

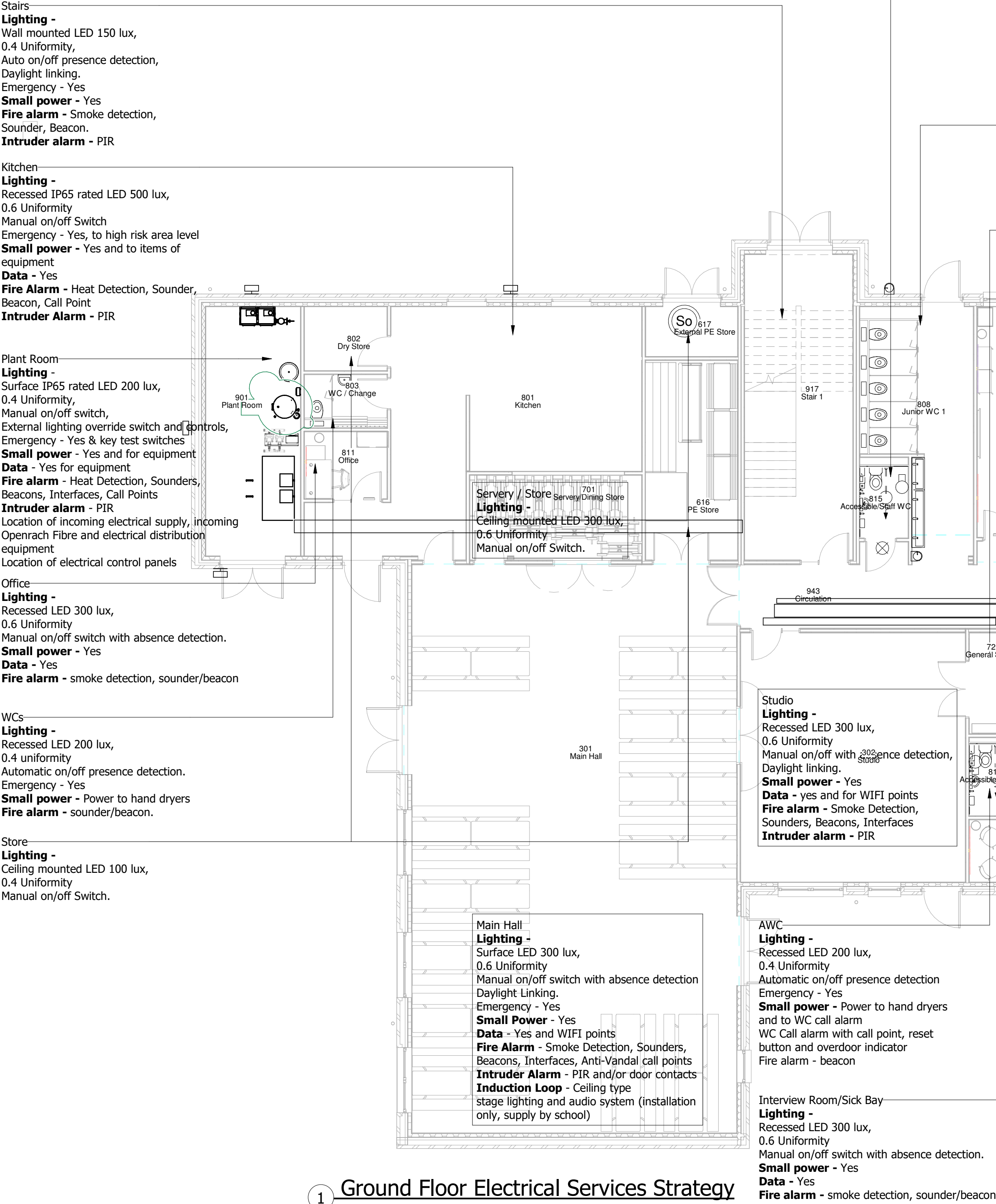
Reviewed
CTH

Approved
AI

For Issue



Offices and Projects UK wide
400 Technology Park
Brunel Way
Chalfont
960 5000
01429 994 077



1 Ground Floor Electrical Services Strategy
1 : 100

© 2019 WALDECK

1. These drawings are copyright and the property of Waldeck Associates Ltd. Copying of the designs drawings or intellectual property in full or in part is not permitted without the written consent of a Director of Waldeck Associates Ltd. In the event of a default by the Employer of its obligations due to Waldeck Associates Ltd neither it or its Assignees or Beneficiaries are permitted or licensed to use or copy this information until such time as the Employer has remedied its default and the Consultant gives written consent to reinstatement of its permission or licence to use its materials.

2. The initial feasibility pre-contract designs specification, cost plans, bill of quantities, feasibility studies and all other documents or media whether electronic or hard copy are indicative only and could be subject to changes in statute or other rules and regulations and changes in the Employer's requirements and will be subject to design development until such time as Waldeck's Services are engaged under a formal written appointment that pays for an appropriate fee at commercial rates. Use of these documents or media shall be entirely at the risk of the person using it. No reliance on these documents shall be permitted and full copyright is retained by Waldeck. Waldeck accepts no responsibility for reliance on these documents or media and it is assumed that the Contractor or Developer or Client has made sufficient provision for design development risk where a full design has not been commissioned. No waiver of this endorsement shall be permitted except in writing and signed by a Director of Waldeck as recorded at Companies House.

3. "Waldeck" is a Trading Style of Waldeck Associates Ltd registered in England and Wales Company N° 3450319.

Notes

1. If in doubt, ask the Project Lead.
2. Do not scale this drawing.
3. All dimensions are in millimetres unless stated otherwise.
4. This drawing is to be read in conjunction with all other relevant drawings and specifications.
5. All Proprietary items to be installed in strict compliance with manufacturers instructions and recommendations.

P04	Issued for Full CP's	MB	03.07.2020
P03	Updated for Design Team Comments	MC	22.04.2020
P02	Issued for Draft CP's	MC	06.04.2020
P01	Issued for CEM 5 review	MC	12.03.2020
Rev	Amendments	Rev'd By	Date

Client



Project
Buckton Fields Primary School

Title
Ground Floor
Electrical Services Strategy

Drawing Number (Project, Originator, Volume, Level, Type, Role, Class & No.)

FS0816 - WLK - 00 - GF - DR - E - 00 - 0001

Internal Project Reference

190280

Suitability | Suitable For

S4 - Suitable for Stage Approval

Scale	Created	Revision
1 : 100 @ A1	Feb 20	P04

Project Lead	Drawn	MC	Checked	GN
MC		Reviewed	GN	Approved
				for Issue



2 Typical Infant Classroom Teaching Wall

1 : 20

Construction, Design and Management Regulations 2015	
The Contractor's attention is drawn to the abnormal risks identified below, annotated on the drawing and explained in the associated design risk registers.	
Legend	
	You Must Not Do
	Hazard or Danger
	You Must Do
	Caution
Abnormal Risks Identified:	
1. No Abnormal Risks Identified	

Small Power Acronyms

AC	Access Control
AD	Automatic Door
BMS	Building Management System
C	Cleaners Socket
CCTV	CCTV Cameras
CP	Cooker Point
CV	Ceiling Void
DB	Distribution Board Meter
DW	Dishwasher
DX	DX Unit
ED	Extract Fan
EXT	External CCTV
FR	Fridge
HD	Hand Dryer
HO	Hoist
HJU	Heat Recovery Unit
IWB	Interactive White Board
KC	Kitchen Canopy
KCW	Kitchen Canopy
NVHU	Natural Ventilation Hybrid Unit
ODH	Overdoor Heater
PH	Panel Heater
PR	Projector
RS	Roller Shutter
SC	Overhead Screen
SP	Speaker
MVR	Mechanical Ventilation Heat Recycler (in ceiling void)
WAP	Wireless Access Point (in ceiling void)
WB	Instantaneous Hot Water Boiler
WCP	Wind Catcher Control Panel
WM	Washing Machine

Notes

- If in doubt, ask the Project Lead.
- Do not scale this drawing.
- All dimensions are in millimetres unless stated otherwise.
- This drawing is to be read in conjunction with all other relevant drawings and specifications.
- All Proprietary items to be installed in strict compliance with manufacturers instructions and recommendations.

Small Power & Data Notes

- The Electrical Contractor shall be responsible for the design and installation of the small power services.
- Positions of all power and data outlets are considered RDD items to be agreed with the school and the DfE after contract award.
- All small power circuits shall be suitably RCD/RBO protected.
- Power supplies for specific equipment may not have been shown and shall be included by the Electrical Contractor to ensure a complete installation of the electrical equipment.
- Co-ordination will be required between the Electrical Contractor, Caledonian Modular and the Mechanical Contractor for dado trunking positions.
- The total number of power outlets shall be 504No. to comply with the EFA Part B - Component Primary Design Brief (CPDB) requirements of 1.2 outlets per pupil place (based on 420 pupil places). These will be divided into single and double outlets around the school. A twin socket outlet will be deemed as 2No. power outlets. Refer to note 2.
- The total number of data points shall be 294No. to comply with the EFA Part B - Component Primary Design Brief (CPDB) requirements of 0.7 outlets per pupil place (based on 420 pupil places).
- An AV wiring loom shall be provided to each teaching space, hall and meeting room.
- Cabling shall be provided by the Electrical Contractor, between the AV equipment and the teacher's station. Facelates and final connections shall be carried out by the school's third-party IT supplier.
- The plantroom layout shall adhere to all British Standards regarding separation of supplies in a shared plantroom. The equipment shall be sized in relation with the EFA Part B - Component Primary Design Brief (CPDB) standards and given a spare space, a competent person shall install the equipment.

Small Power Legend

- Switched Single Socket Outlet
- Switched Single Socket Outlet (Cleaners)
- Switched Twin Socket Outlet
- Single Data Outlet
- Twin Data Outlet
- Switched Fused Connection Unit
- Unswitched Fused Connection Unit
- 20A DP Lockable Isolator
- Double Back Box for AV
- Flex Outlet Plate
- CO2 Sensor
- Ventilation Booster Switch
- Cooker Point (45A Double Pole Switch)
- Cooker Outlet Plate
- SP&N BS EN 60309 Socket (Rating as Denoted)
- SP&N Isolator (Rating as Denoted)
- TP&N Isolator (Rating as Denoted)
- SP&N Distribution Board
- TP&N Distribution Board

p22	Issued for Full CP's - Updated in line with Caledonian Comments	MB	13.08.2020
P01	Issued for Full CP's	MB	03.07.2020
Rev	Amendments	By	Date
Client			



Project
Buckton Fields Primary School

Title
Ground Floor
Proposed Small Power & Data
Sheet 2 of 2

Drawing Number (Project, Originator, Volume, Level, Type, Role, Class & No.)
F50816 - WLK - 00 - GF - DR - E - 70 - 0002

Internal Project Reference
190280

Suitability | Suitable For
S4 - Suitable for Stage Approval

Scale Created Revision
As indicated @ A0 31.03.20 P02

Project Lead Drawn M.B. Checked M.C.
M.C. Reviewed M.C. Approved A.L. for Issue



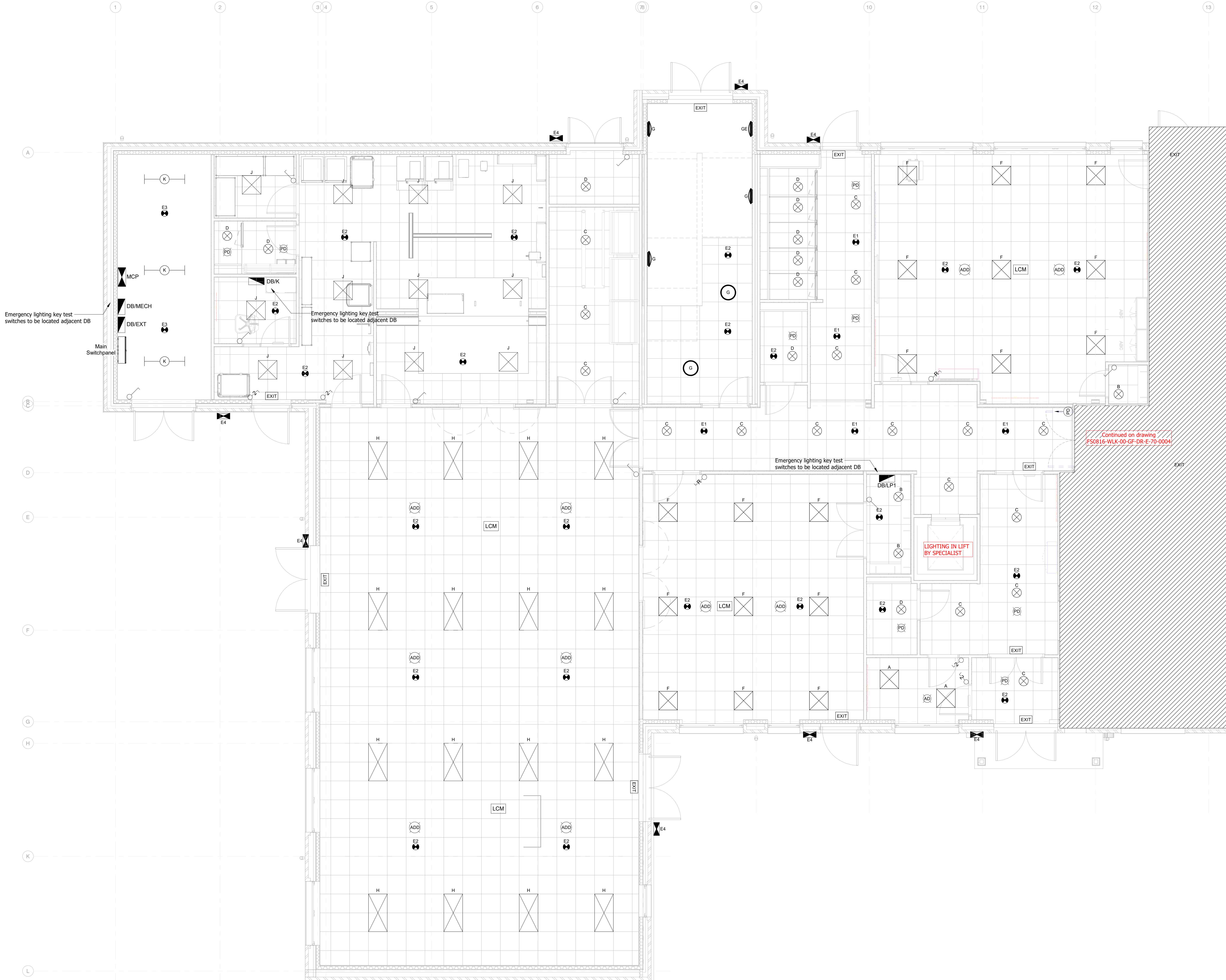
Offices and Projects UK wide
AMT Technology Park
Brunel Way
Sharnford
S60 5WG
0142 994 077

1 GF - Small Power & Data - Sheet 2 of 2

1 : 50

© 2019 WALDECK

- These drawings are copyright and the property of Waldeck Associates Ltd. Copying of the designs drawings or intellectual property in full or in part is not permitted without the written consent of a Director of Waldeck Associates Ltd. In the event of a default by the Employer of its obligations due to Waldeck Associates Ltd neither it or its Assignees or Beneficiaries are permitted or licensed to use or copy this information until such time as the Employer has remedied its default and the Consultant gives written consent to reinstatement of its permission or licence to use its materials.
- The initial feasibility pre-contract designs specifications, cost plans, bill of quantities, feasibility studies and all other documents or media whether electronic or hard copy are indicative only and could be subject to changes in statute or other rules and regulations and changes in the Employer's requirements and will be subject to design development until such time as Waldeck's Services are engaged under a formal written appointment that pays for an appropriate fee at commercial rates. Use of these documents or media shall be entirely at the risk of the person using it. No reliance on these documents shall be permitted and full copyright is retained by Waldeck. Waldeck accepts no responsibility for reliance on these documents or media and it is assumed that the Contractor or Developer or Client has made sufficient provision for design development risk where a full design has not been commissioned. No waiver of the endorsement shall be permitted except in writing and signed by a Director of Waldeck as recorded at Companies House.
- "Waldeck" is a Trading Style of Waldeck Associates Ltd registered in England and Wales Company N° 3460319.



1 GF - Lighting Layout - Sheet 1 of 2
1 : 50

Lighting Fixture Schedule		
Type Mark	Description	Manufacturer
A	600 x 600mm LED Panel c/w DALI Dimming	Apollo Lighting (or equal and approved)
A1	600 x 600mm LED Panel Fixed Output	Apollo Lighting (or equal and approved)
B	Circular Surface Mounted LED Luminaire	Apollo Lighting (or equal and approved)
C	LED Circular recessed downlighter	Apollo Lighting (or equal and approved)
D	LED Circular recessed downlighter	Apollo Lighting (or equal and approved)
E1	Circular Spot Emergency Recessed Luminaire with Corridor Optic	Apollo Lighting (or equal and approved)
E2	Circular Spot Emergency Recessed Luminaire with Open Optic	Apollo Lighting (or equal and approved)
E3	IP65 Rated Circular Spot Emergency Surface Mounted Luminaire with Corridor Optic	Apollo Lighting (or equal and approved)
E4	IP65 External LED Emergency Bulkhead	Apollo Lighting (or equal and approved)
EXIT	Ceiling Mounted LED Emergency Exit Sign	Apollo Lighting (or equal and approved)
F	600 x 600mm LED Panel c/w DALI Dimming	Apollo Lighting (or equal and approved)
F1	600 x 600mm LED Panel Fixed Output	Apollo Lighting (or equal and approved)
G	Surface Mounted Circular LED Luminaire	Apollo Lighting (or equal and approved)
GE	Surface Mounted Circular LED Luminaire c/w 3HR emergency battery unit	Apollo Lighting (or equal and approved)
H	IP40 Rated, 4000K 1200 x 600mm LED Panel	Apollo Lighting (or equal and approved)
J	IP65 Rated, 4000K 600 x 600mm LED Panel	Apollo Lighting (or equal and approved)
K	IP65 Surface Mounted Linear LED Luminaire	Apollo Lighting (or equal and approved)

Construction, Design and Management Regulations 2015

The Contractors attention is drawn to the abnormal risks identified below, annotated on the drawing and explained in the associated design risk registers.

Legend

You Must Not Do

Hazard or Danger

You Must Do

Caution

Abnormal Risks Identified:
1. No abnormal risks identified

Notes

1. If in doubt, ask the Project Lead.

2. Do not scale this drawing.

3. All dimensions are in millimetres unless stated otherwise.

4. This drawing is to be read in conjunction with all other relevant drawings and specifications.

5. All Proprietary items to be installed in strict compliance with manufacturers instructions and recommendations.

Lighting Notes

1. Lighting shall be designed in accordance with CIBSE / SLL LGS Lighting for Education.

2. Emergency Lighting shall be designed in accordance with BS 5266 Part 1.

3. The whole of the lighting installation shall be designed and installed in accordance with the design requirements of the EFA Part B - Component Primary Design Brief (CPDB) and the Area Data Sheets.

4. Where quantities and positions have been shown, they shall be verified and amended to suit the Electrical Contractor's design.

5. Passive exit signage has been assumed throughout, with the exception of the Hall where illuminated exit signs are shown. This shall be confirmed by the fire officer and within the fire strategy document once available.

6. The positions and quantities of automatic controls are indicative only of the design intent, the Electrical Contractor shall be responsible for ensuring that the quantity and locations suit the design to ensure a fully compliant installation.

7. Local key isolation switches shall be provided for all automatic controls.

8. The Contractor shall ensure that the proposed lighting design is suitable for the proposed ceiling type.

9. Where a suspended ceiling grid is proposed, the Contractor shall ensure that the positions of the proposed lighting are co-ordinated with the proposed grid.

10. The lighting layouts will need to be co-ordinated with all other services.

11. Where daylight linking is required, the Contractor shall ensure that the luminaires are DALI dimmable to fully work with the proposed controls.

12. The maximum lighting energy load in the Classrooms is 2.4W/m² per 100 lux.

13. The EFA Part B - Component Primary Design Brief (CPDB) requires that dimming is provided to enable the teaching staff to reduce the lighting levels in spaces which are fitted with data projectors or interactive whiteboards.

14. The final positions of the Emergency Exit Signs shall be determined by the fire strategy document/drawings and confirmed by the fire officer and building control.

Lighting Legend

LCM

Lighting Control Module

1 Gang 1 Way Switch

1 Gang 2 Way Switch

Retractive Switch

Dimmer Switch - Retractive

360 Presence Detector

360 Absence Detector

360 Absence Detector with Daylight Dimming

Long Range Presence Detector

pg2	Issued for Full CP's	Updated in line with Caledonian Comments	MB	11.08.2020
P01	Issued for Full CP's		MB	03.07.2020
Rev	Amendments		Rev'd By	Date
Client:				

Project
Buckton Fields Primary School

Title
Ground Floor
Proposed Lighting Layout
Sheet 1 of 2

Drawing Number (Project, Originator, Volume, Level, Type, Role, Class & No.)

F50816 - WLK - 00 - GF - DR - E - 70 - 0003

Internal Project Reference

190280

Suitability | Suitable For

S4 - Suitable for Stage Approval

Scale Created Revision

As indicated @ A0 June 20 P02

Project Lead Drawn MB Checked MC

MC Reviewed MC Approved AI for Issue

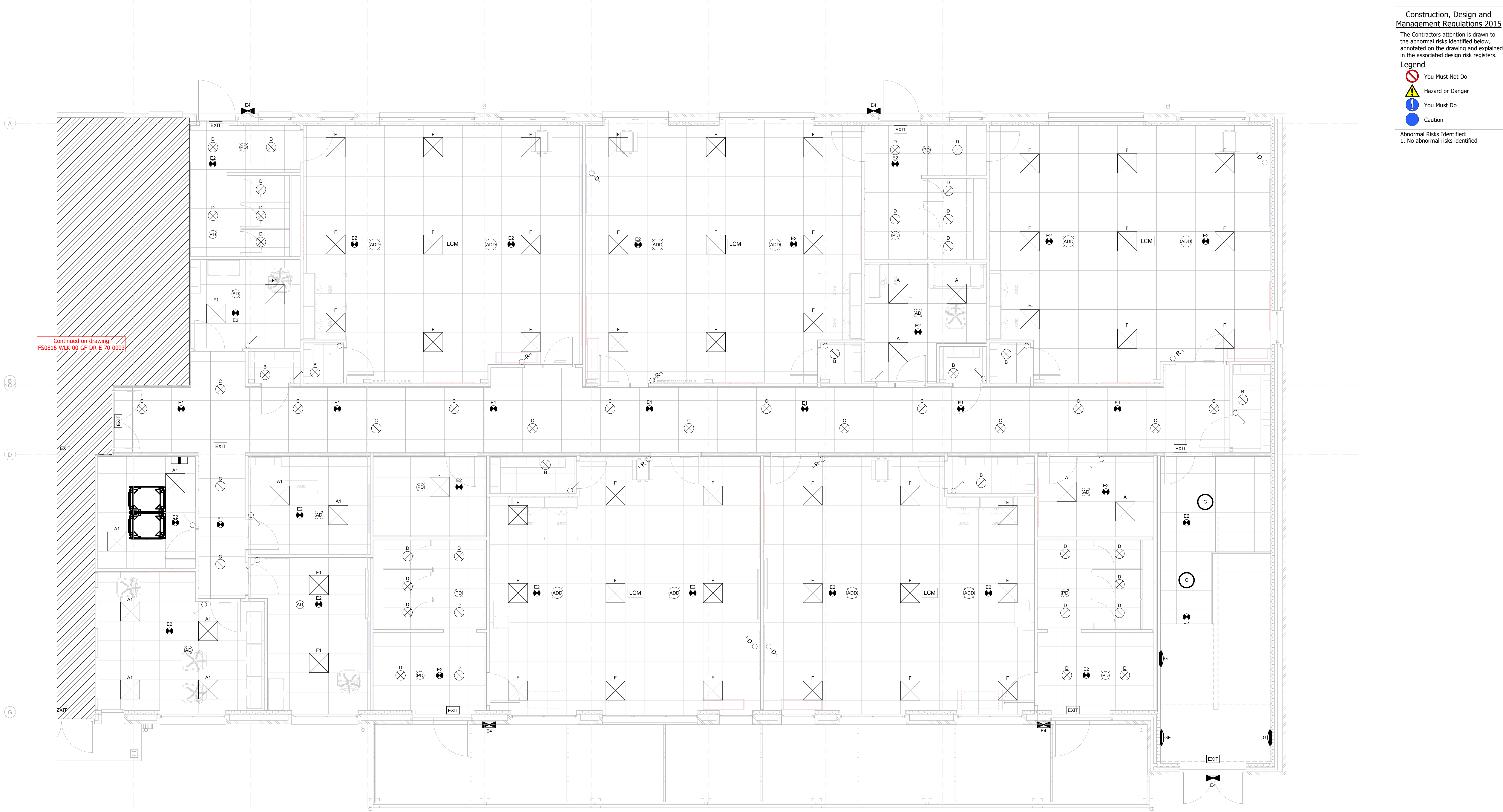
Offices and Projects UK wide
AMT Technology Park
Brunel Way
Barnet
EN6 5WG
0142 994 077

© 2019 WALDECK

1. These drawings are copyright and the property of Waldeck Associates Ltd. Copying of the designs drawings or intellectual property in full or in part is not permitted without the written consent of a Director of Waldeck Associates Ltd. In the event of a default by the Employer of its obligations due to Waldeck Associates Ltd neither it or its Assignees or Beneficiaries are permitted or licensed to use or copy this information until such time as the Employer has remedied its default and the Consultant gives written consent to reinstatement of its permission or licence to use its materials.

2. The initial feasibility pre-contract designs, specifications, cost plans, bill of quantities, feasibility studies and all other documents or media whether electronic or hard copy are indicative only and could be subject to changes in statute or other rules and regulations and changes in the Employer's requirements and will be subject to design development until such time as Waldeck's Services are engaged under a formal written appointment that pays for an appropriate fee at commercial rates. Use of these documents or media shall be entirely at the risk of the person using it. No reliance on these documents shall be permitted and full copyright is retained by Waldeck. Waldeck accepts no responsibility for reliance on these documents or media and it is assumed that the Contractor or Developer or Client has made sufficient provision for design development risk where a full design has not been commissioned. No waiver of the endorsement shall be permitted except in writing and signed by a Director of Waldeck as recorded at Companies House.

3. "Waldeck" is a Trading Style of Waldeck Associates Ltd registered in England and Wales Company N° 3460319.



- Notes**
- If in doubt, ask the Project Lead.
 - Do not scale this drawing.
 - All dimensions are in millimetres unless stated otherwise.
 - This drawing is to be read in conjunction with all other relevant drawings and specifications.
 - All Proprietary items to be installed in strict compliance with manufacturers instructions and recommendations.

- Lighting Notes**
- Lighting shall be designed in accordance with CIBSE / SLL LGS Lighting for Education.
 - Emergency Lighting shall be designed in accordance with BS 5266 Part 1.
 - The whole of the lighting installation shall be designed and installed in accordance with the design requirements of the EFA Part B - Component Primary Design Brief (CPDB) and the Area Data Sheets.
 - Where quantities and positions have been shown, they shall be verified and amended to suit the Electrical Contractor's design.
 - Passive exit signage has been assumed throughout, with the exception of the Hall where illuminated exit signs are shown. This shall be confirmed by the fire officer and within the fire strategy document once available.
 - The positions and quantities of automatic controls are indicative only of the design intent, the Electrical Contractor shall be responsible for ensuring that the quantity and locations suit the design to ensure a fully compliant installation.
 - Local key isolation switches shall be provided for all automatic controls.
 - The Contractor shall ensure that the proposed lighting design is suitable for the proposed ceiling type.
 - Where a suspended ceiling grid is proposed, the Contractor shall ensure that the positions of the proposed lighting are co-ordinated with the proposed grid.
 - The lighting layouts will need to be co-ordinated with all other services.
 - Where daylight linking is required, the Contractor shall ensure that the luminaires are DALI dimmable to fully work with the proposed controls.
 - The maximum lighting energy load in the Classrooms is 2.4W/m² per 100 lux.
 - The EFA Part B - Component Primary Design Brief (CPDB) requires that dimming is provided to enable the teaching staff to reduce the lighting levels in spaces which are fitted with data projectors or interactive whiteboards.
 - The final positions of the Emergency Exit Signs shall be determined by the fire strategy document/drawings and confirmed by the fire officer and building control.

- Lighting Legend**
- LCM Lighting Control Module
 - 1 Gang 1 Way Switch
 - 1 Gang 2 Way Switch
 - Retractive Switch
 - Dimmer Switch - Retractive
 - 360 Presence Detector
 - 360 Absence Detector
 - 360 Absence Detector with Daylight Dimming
 - Long Range Presence Detector

pg2	Issued for Full CP's - Updated in line with Caledonian Comments	MB	13.08.2020
P01	Issued for Full CP's	MB	03.07.2020
Rev	Amendments	Rev'd By	Date
Client			

Caledonian

Project
Buckton Fields Primary School

Title
**Ground Floor
Proposed Lighting Layout
Sheet 2 of 2**

Drawing Number (Project, Originator, Volume, Level, Type, Role, Class & No.)
FS0816 - WLK - 00 - GF - DR - E - 70 - 0004

Internal Project Reference
190280

Suitability | Suitable For
S4 - Suitable for Stage Approval

Scale
As indicated @ A0

Created
31.03.20

Revision
P02

Project Lead
M.C.

Drawn
M.B.

Checked
M.C.

Reviewed
M.C.

Approved
A.L.

For Issue

Waldeck
Digital Strategy Consultancy Solutions

Offices and Projects UK wide
40th Technology Park
Brunel Way
Charnham
SW65 5WG
0142 994 077

1 GF - Lighting Layout - Sheet 2 of 2
1 : 50

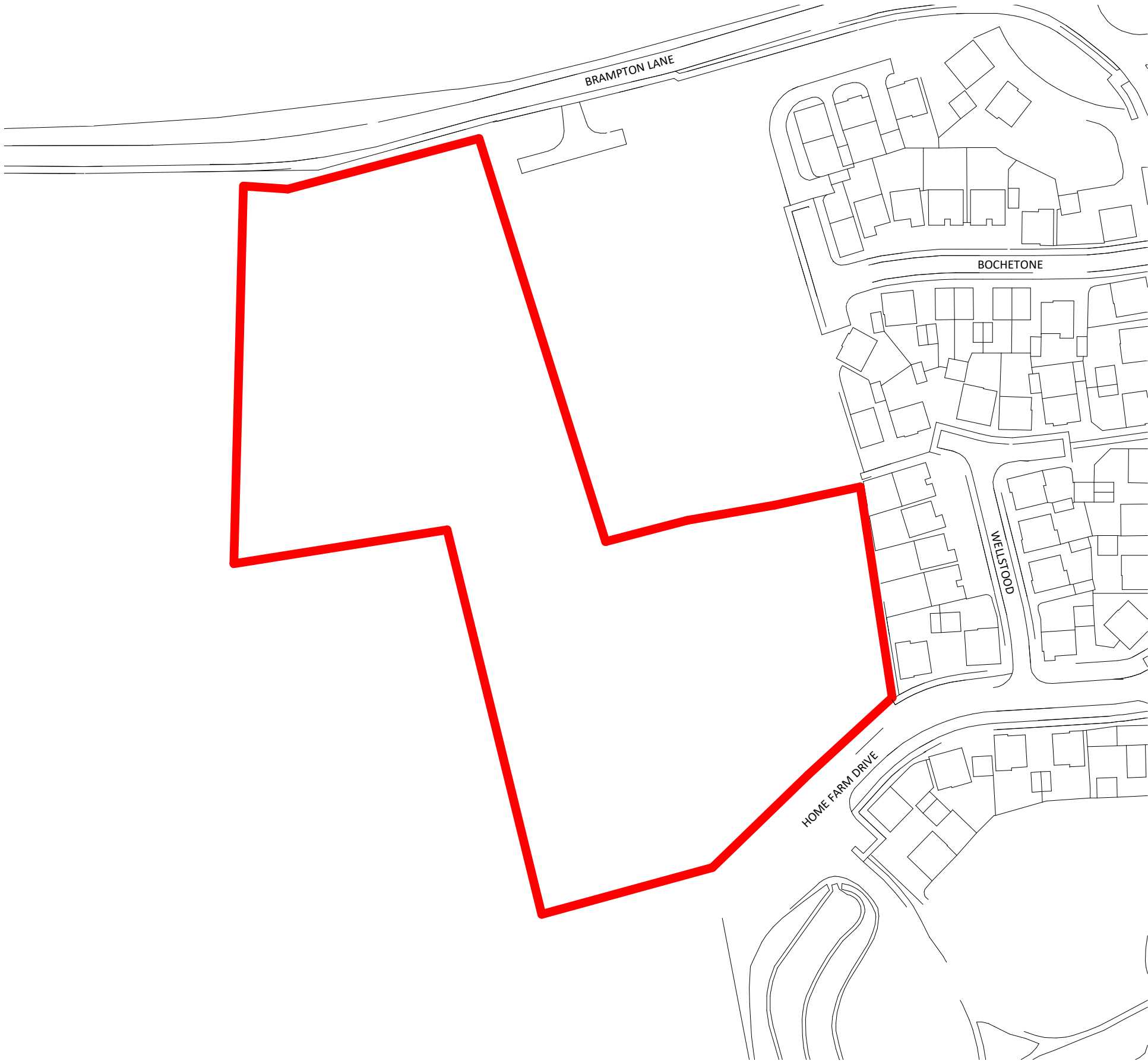
Lighting Fixture Schedule		
Type Mark	Description	Manufacturer
A	600 x 600mm LED Panel c/w DALI Dimming	Apollo Lighting (or equal and approved)
A1	600 x 600mm LED Panel Fixed Output	Apollo Lighting (or equal and approved)
B	Circular Surface Mounted LED Luminaire	Apollo Lighting (or equal and approved)
C	LED Circular recessed downlighter	Apollo Lighting (or equal and approved)
D	LED Circular recessed downlighter	Apollo Lighting (or equal and approved)
E1	Circular Spot Emergency Recessed Luminaire with Corridor Optic	Apollo Lighting (or equal and approved)
E2	Circular Spot Emergency Recessed Luminaire with Open Optic	Apollo Lighting (or equal and approved)
E3	IP65 Rated Circular Spot Emergency Surface Mounted Luminaire with Corridor Optic	Apollo Lighting (or equal and approved)
E4	IP65 External LED Emergency Bulkhead	Apollo Lighting (or equal and approved)
EXIT	Ceiling Mounted LED Emergency Exit Sign	Apollo Lighting (or equal and approved)
F	600 x 600mm LED Panel c/w DALI Dimming	Apollo Lighting (or equal and approved)
F1	600 x 600mm LED Panel Fixed Output	Apollo Lighting (or equal and approved)
G	Surface Mounted Circular LED Luminaire	Apollo Lighting (or equal and approved)
GE	Surface Mounted Circular LED Luminaire c/w 3HR emergency battery unit	Apollo Lighting (or equal and approved)
H	IP40 Rated, 4000K, 1200 x 600mm LED Panel	Apollo Lighting (or equal and approved)
J	IP65 Rated, 4000K, 600 x 600mm LED Panel	Apollo Lighting (or equal and approved)
K	IP65 Surface Mounted Linear LED Luminaire	Apollo Lighting (or equal and approved)

© 2019 WALDECK

1. These drawings are copyright and the property of Waldeck Associates Ltd. Copying of the designs drawings or intellectual property in full or in part is not permitted without the written consent of a Director of Waldeck Associates Ltd. In the event of a default by the Employer of its obligations due to Waldeck Associates Ltd neither it or its Assignees or Beneficiaries are permitted or licensed to use or copy this information until such time as the Employer has remedied its default and the Consultant gives written consent to reinstatement of its permission or licence to use its materials.

2. The initial feasibility pre-contract designs, specifications, cost plans, bill of quantities, feasibility studies and all other documents or media whether electronic or hard copy are indicative only and could be subject to changes in statute or other rules and regulations and changes in the Employer's requirements and will be subject to design development until such time as Waldeck's Services are engaged under a formal written appointment that pays for an appropriate fee at commercial rates. Use of these documents or media shall be entirely at the risk of the person using it. No reliance on these documents shall be permitted and full copyright is retained by Waldeck. Waldeck accepts no responsibility for reliance on these documents or media and it is assumed that the Contractor or Developer or Client has made sufficient provision for design development risk where a full design has not been commissioned. No waiver of this endorsement shall be permitted except in writing and signed by a Director of Waldeck as recorded at Companies House.

3. "Waldeck" is a Trading Style of Waldeck Associates Ltd registered in England and Wales Company N° 3460319.



Site location plan
1 : 1250

Responsibility is not accepted for errors made by others in scaling from this drawing.
All construction information should be taken from figured dimensions only.

Site Boundary

S4	P02	13.08.20	CP Submission
PL	PL2	28.05.20	Issued for Planning Submission
PL	PL1	19.05.20	Draft Planning Issue for comment
S2	P01	09.04.20	First Issue
STATUS	REV	DATE	DESCRIPTION

CLIENT	REVISED BY
Caledonian Modular	RB
CHECKED BY	RB
ORIGINATOR NO	153608

CONSULTANT
STRIDE TREGLOWN
www.stridetreglown.com © Stride Treglown Limited 2017

PROJECT
Buckton Fields Primary School
Village of Boughton, Brampton Lane
Northampton
NN6 8AA

DRAWING TITLE
Site location plan

SUITABILITY STATUS	SCALE
S4 : SUITABLE FOR STAGE APPROVAL	1 : 1250 @ A3

PROJECT ORIGINATOR ZONE LEVEL TYPE ROLE CLASS. NUMBER	REVISION
FS0816-STL-00-ZZ-DR-A-00-0100	P02

KEY:

- TREE/SHRUBS TO BE REMOVED
- MAJOR ENTRANCE
- MINOR ENTRANCE
- FIRE & MAINTENANCE ROUTE
- 2.4m PALADIN PERIMETER FENCE
- 1.2m PICKET FENCE
- 3.0m MIN SPORT BALL STOP FENCE
- 2.4m HIT AND MISS TIMBER FENCE
- 2.95m CLOSE BOARDED TIMBER FENCE
- PEDESTRIAN GATE
- VEHICLE GATE
- NEW TREES

ZONE	BB103 AREA	PROPOSED AREA
SOFT OUTDOOR PE	8400	8975
HARD OUTDOOR PE	1030	1040
SOFT INFORMAL AND SOCIAL	1440	3146
HARD INFORMAL AND SOCIAL	620	1284
HABITAT	210	445
FLOAT	2700	331
TOTAL NET SITE	14400	15221
FOOTPATHS AND PARKING	-	2766
TOTAL SITE AREA	15986	19438

Note: Area for Habitat is taken as 'useable' space, i.e. not thin space behind and adjacent to MUGA. This has been added to "Float" for the purposes of area calcs.

S4	P12	13.08.20	CP Submission
S3	P11	11.08.20	Issue to team following planning updates
S3	P10	03.07.20	Issue for CML Comment
S3	P09	14.05.20	Parking layout amended
S3	P08	21.04.20	Draft CP Issue
S3	P07	09.04.20	Draft CP's for CAL comment
S2	P06	24.03.20	Post CEM 6 Issue
S2	P05	20.03.20	Post CEM 5 Issue
S2	P04	17.03.20	CEM 5 Issue
S2	P03	16.03.20	Pre CEM5 Issue for comment
S2	P02	05.03.20	Post CEM4 Issue to CAL for prelim take off
S2	P01	02.03.20	First Issue CEM4

STATUS	REV	DATE	DESCRIPTION	REVISED BY
CLIENT				WD
Caledonian Modular				
				RB
				ORIGINATOR NO
				153608

CONSULTANT

STRIDE TREGLOWN

www.stridetreglown.com © Stride Treglown Limited 2020

PROJECT

Buckton Fields Primary School
Village of Boughton, Brampton Lane
Northampton
NN6 8AA

DRAWING TITLE

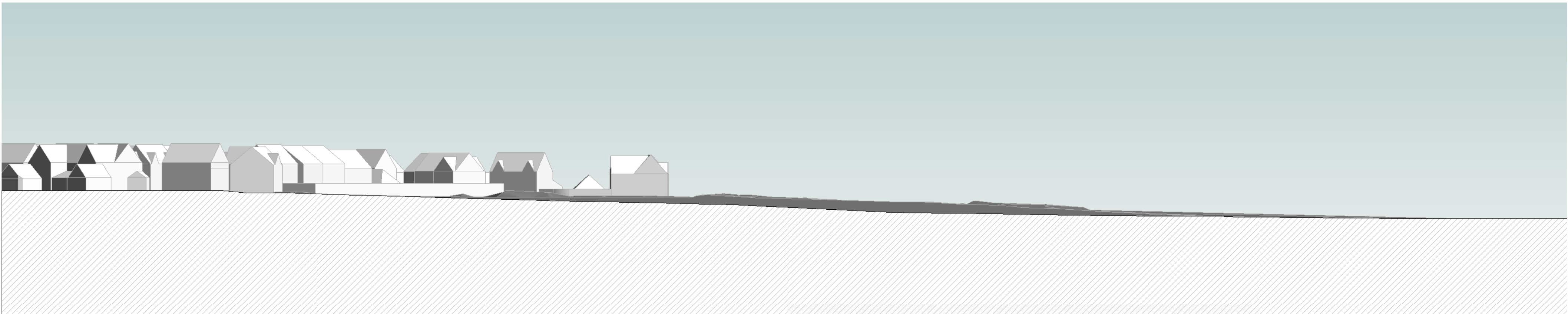
Site Masterplan

SUITABILITY STATUS	SCALE
S4 : SUITABLE FOR STAGE APPROVAL	As indicated @ A1
PROJECT ORIGINATOR ZONE LEVEL TYPE ROLE CLASS NUMBER	REVISION
FS0816-STL-XX-ZZ-DR-A-00-1800	P12



Responsibility is not accepted for errors made by others in scaling from this drawing.
All construction information should be taken from figured dimensions only.

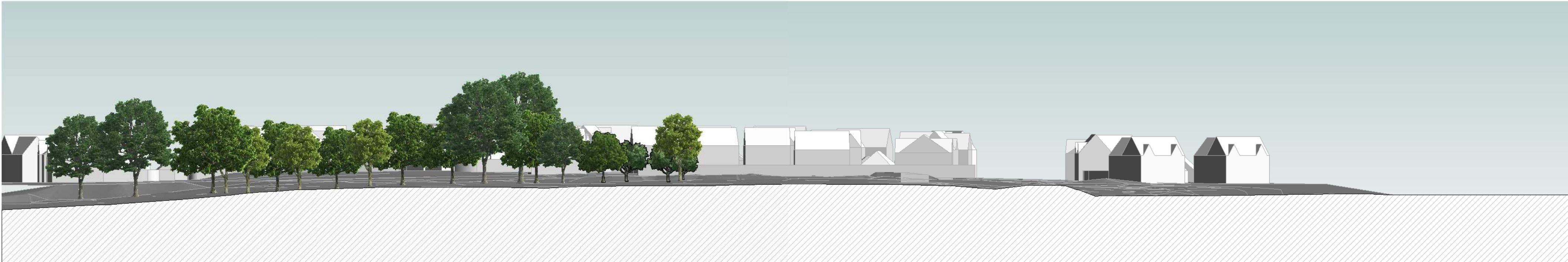
0mm 50mm 100mm



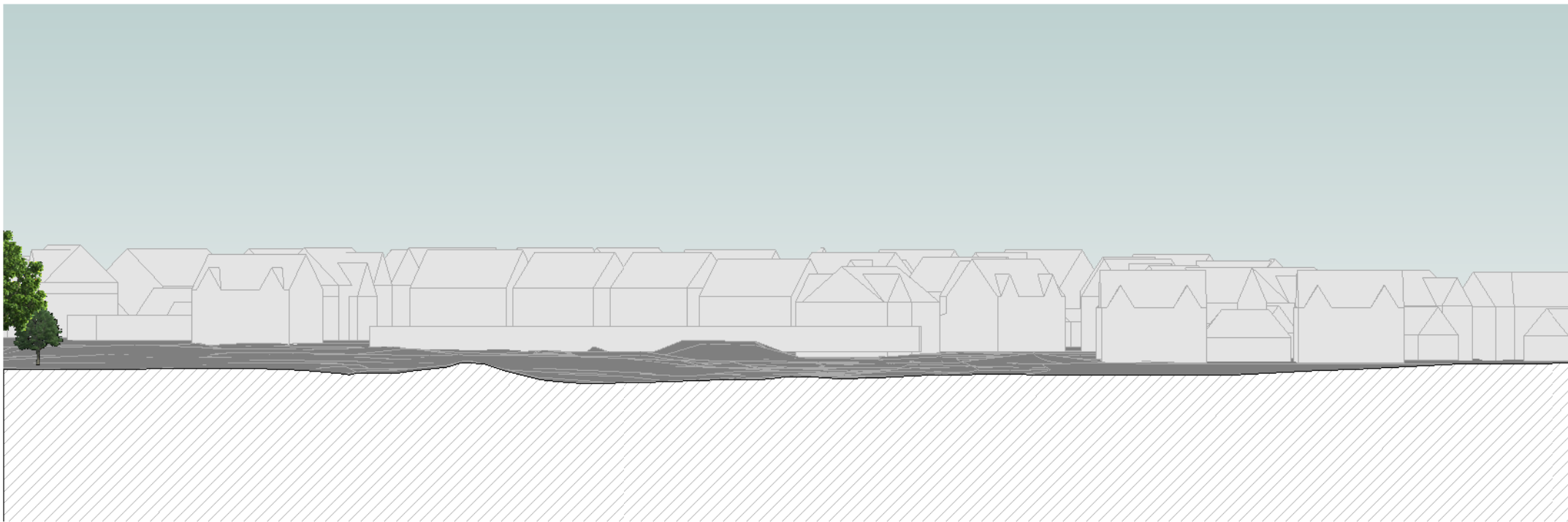
Existing Site Section 1
1 : 500



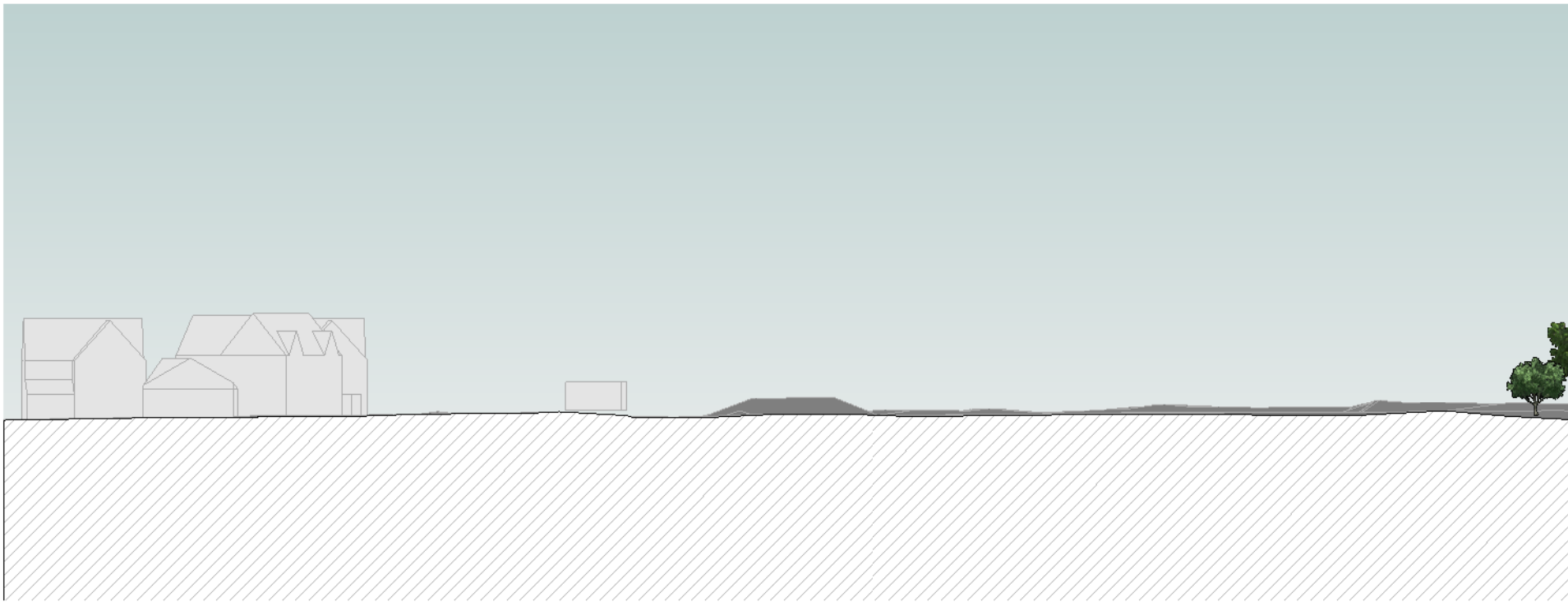
Existing Site Section 2
1 : 500



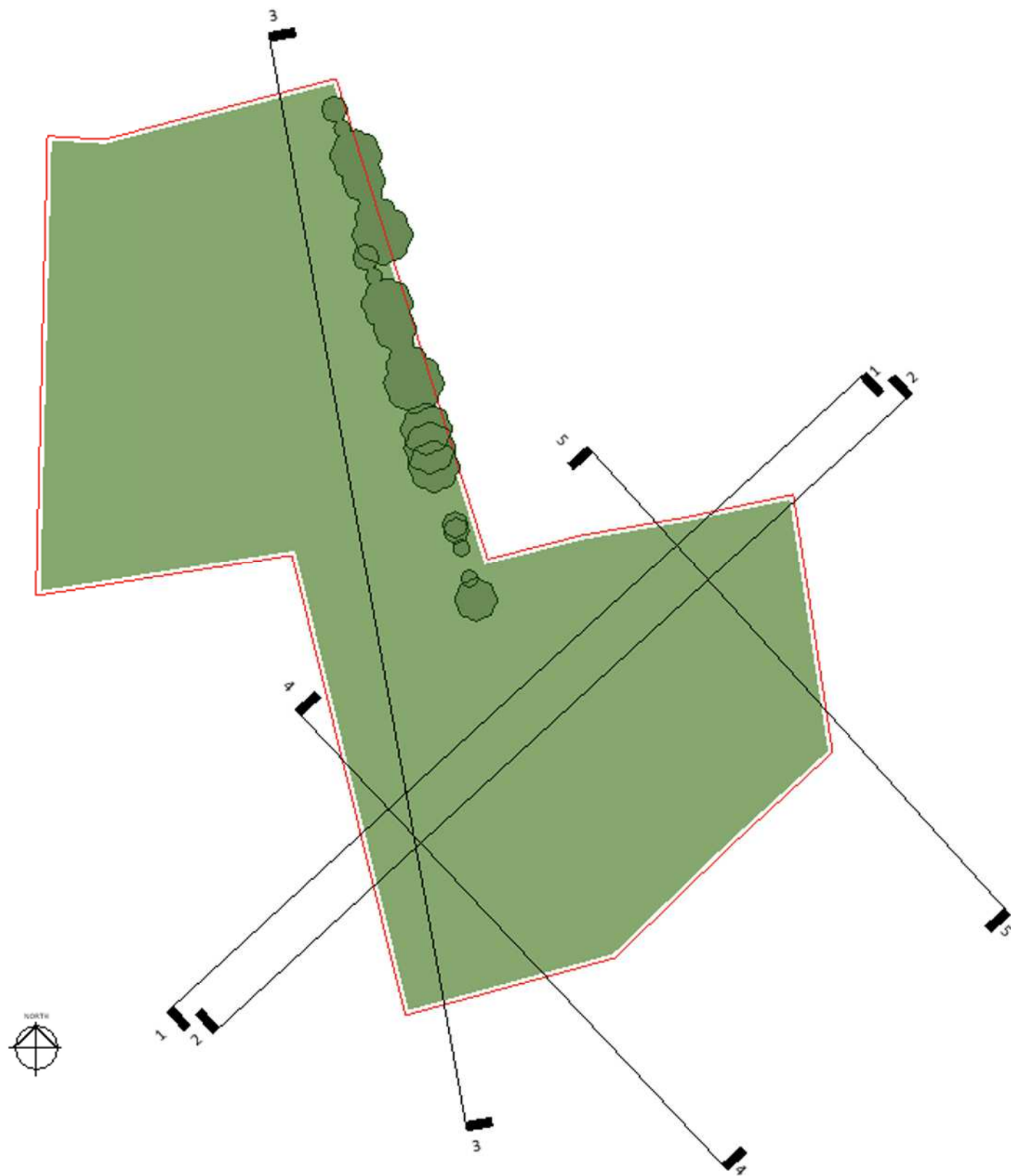
Existing Site Section 3
1 : 500



Existing Site Section 4
1 : 500



Existing Site Section 5
1 : 500



S4	P04	11.08.20	CP Submission
PL	PL3	29.07.20	Updated for Planning
S3	P03	26.02.20	Issued for CML comment
PL	PL2	28.05.20	Issued for Planning Submission
S3	P02	21.04.20	Draft CP Issue
S3	P01	01.04.20	Draft CP's for CAL comment

STATUS	REV	DATE	DESCRIPTION	REVISD BY
CLIENT				WD
Caledonian Modular				CHECKED BY
				RB
				ORIGINATOR NO
				153608

CONSULTANT
STRIDE TREGLOWN
www.stridetreglown.com
PROJECT
Buckton Fields Primary School
Village of Boughton, Brampton Lane
Northampton
NN6 8AA

DRAWING TITLE
Existing Site Section

SUITABILITY STATUS S4 : SUITABLE FOR STAGE APPROVAL	SCALE 1 : 500 @ A1
PROJECT ORIGINATOR ZONE LEVEL TYPE ROLE CLASS NUMBER FS0816-STL-XX-ZZ-DR-A-00-3900	REVISION P04

Key:

- ① U-11's Football Pitch
- ② MUGA Hard outdoor PE area
- ③ KS1 hard play
- ④ Reception/ Play area
- ⑤ Waiting area
- ⑥ Soft informal and social area
- ⑦ Staff parking
- ⑧ Visitor parking
- ⑨ Drop off/ pick up coach parking
- ⑩ Pedestrian walkway

- Lockable gate
- CS Cycle shelter
- BS Bin store 14m2

S4	P03	23.09.20	CP Clarifications and Planning amendment
S4	P02	13.08.20	CP Submission
S3	P01	03.07.20	Issue for CML Comment

STATUS	REV	DATE	DESCRIPTION	REVISED BY
CLIENT				AP
Caledonian Modular				CHECKED BY
				CS
				ORIGINATOR NO
				153608

CONSULTANT
STRIDE TREGLOWN
www.stridetreglown.com © Stride Treglown Limited 2020
PROJECT
Buckton Fields Primary School
Village of Boughton, Brampton Lane
Northampton
NN6 8AA

DRAWING TITLE
Landscape General Arrangement Plan

SUITABILITY STATUS S4 : SUITABLE FOR STAGE APPROVAL	SCALE As indicated @ A1
PROJECT ORIGINATOR ZONE LEVEL TYPE ROLE CLASS NUMBER FS0816-STL-XX-ZZ-DR-L-00-1801	REVISION P03



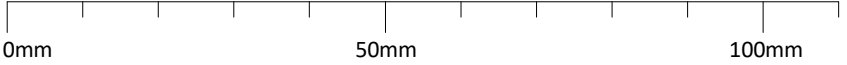
General notes:

- Drawing information has been based on the topographical survey. Stride Treglown accept no responsibility for omissions and errors made in the production of this base line information or errors in new construction information deriving from the existing survey.
- Drawing to be read in conjunction with all other relevant drawings and documents.
- Main contractor to determine exact location of services/drainage, this should to be confirmed on site prior to commencement of works to avoid tree pit / services conflicts.
- Contractor to allow for white lining of parking bays.
- All foundations and base formations to Engineers design and specifications.
- All drainage details to Civil Engineers specification and details.
- All manhole covers within paved areas to be recessed. Manhole covers are to withstand the appropriate loading class within any given area, manufacture and product details are to be confirmed with the Engineer and Landscape Architect.
- External Lighting to Engineers detail and specification.
- This drawing assumes that the existing site subsoil could be re-used.

However this is subject to detailed testing and analysis of the subsoil. If the subsoil is not suitable, imported subsoil will be required in accordance with the soft and base landscape specification.

- All treatment of softwork areas to comply to BS4428 Code of Practice for general landscape operations.
- All native shrub & hedge species plant type supplied for designated areas are to be determined by the proposed planting season. (ie bareroot or container grown stock).
- Works described on this drawing include operations within or close to the root protection areas of very important trees. Excavation to be carried out in accordance with Arboricultural survey requirements. If in doubt, STOP and seek clarification.

Responsibility is not accepted for errors made by others in scaling from this drawing.
All construction information should be taken from figured dimensions only.



ZONE	BB103 AREA	PROPOSED AREA
SOFT OUTDOOR PE	8400	8975
HARD OUTDOOR PE	1030	1040
SOFT INFORMAL AND SOCIAL	1440	3146
HARD INFORMAL AND SOCIAL	620	1284
HABITAT	210	445
FLOAT	2700	331
TOTAL NET SITE	14400	15221
FOOTPATHS AND PARKING	-	2766
TOTAL SITE AREA	15986	19438

Note: Area for Habitat is taken as 'useable' space, i.e. not thin space behind and adjacent to MUGA. This has been added to "Float" for the purposes of area calcs.

KEY:

- BOUNDARY LINE
- SOFT OUTDOOR PE
- HARD OUTDOOR PE
- SOFT INFORMAL AND SOCIAL
- HARD INFORMAL AND SOCIAL
- HABITAT
- FOOTPATH
- PARKING

S4	P07	23.09.20	CP Clarifications and Planning Amendment
S4	P06	13.08.20	CP Submission
S3	P05	03.07.20	Issue for CML Comment
S3	P04	14.05.20	Parking layout amended
S3	P03	21.04.20	Draft CP Issue
S3	P02	09.04.20	Draft CP's for CAL comment
S2	P01	25.03.20	Post CEM 6 Issue

STATUS	REV	DATE	DESCRIPTION	REVISED BY
CLIENT				AP
Caledonian Modular				CHECKED BY
				CS
				ORIGINATOR NO
				153608

CONSULTANT

STRIDE TREGLOWN

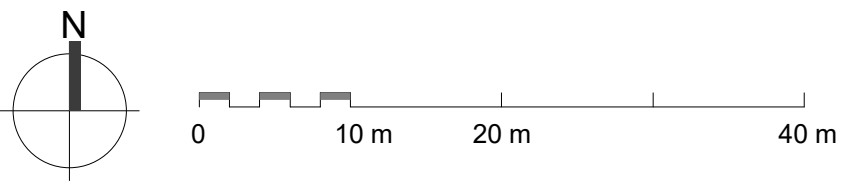
www.stridetreglown.com

© Stride Treglown Limited 2020

PROJECT

Buckton Fields Primary School
Village of Boughton, Brampton Lane
Northampton
NN6 8AA

DRAWING TITLE	
BB103 Site Diagram	
SUITABILITY STATUS	SCALE
S4 : SUITABLE FOR STAGE APPROVAL	As indicated @ A1
PROJECT ORIGINATOR ZONE LEVEL TYPE ROLE CLASS NUMBER	REVISION
FS0816-STL-XX-ZZ-DR-L-00-1802	P07



KEY:

- Building to act as secure line.
- Secure site boundary plan - 2.4m paladin perimeter fence with matching gates at front of house.
- Timber 1.2m high picket fence to Reception play area.
- Fencing to MUGA - min. 3.0m high weld mesh sport ball stop fence to Sport England Standards.
- Fencing to bin store, 2.4m high hit and miss timber fencing.
- 2.5m Close boarded timber fence

Notes:

- All fencing to be to Secure by Design Standards.
- MUGA fencing to be to Sport England Standards.

Gates

- S = singular (pedestrian access)
D = Double (for vehicles, pedestrian entrance, fire and maintenance access)
- Secure Access Control to gates
- Major entrance
- Minor entrance

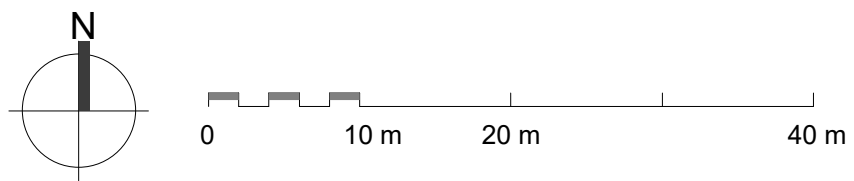
S4	P04	23.09.20	CP Clarifications
S4	P03	11.09.20	Change to acoustic fence for client comment
S4	P02	13.06.20	CP Submission
S3	P01	03.07.20	Issue for CML Comment

STATUS	REV	DATE	DESCRIPTION	REVISED BY
CLIENT				AP
Caledonian Modular				CHECKED BY CS
				ORIGINATOR NO 153608

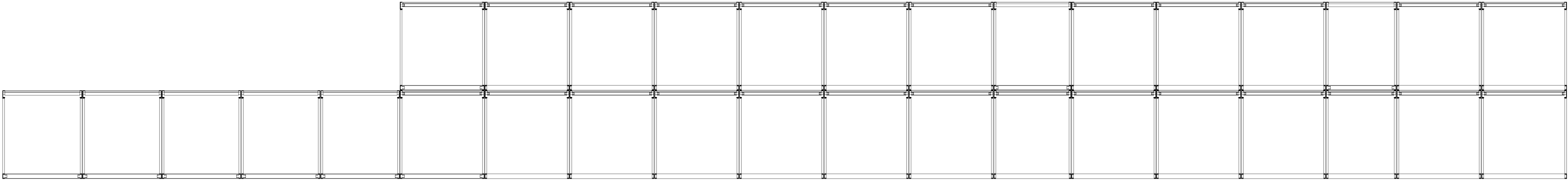
CONSULTANT
STRIDE TREGLOWN
www.stridetreglown.com © Stride Treglown Limited 2020
PROJECT
Buckton Fields Primary School
Village of Boughton, Brampton Lane
Northampton
NN6 8AA

DRAWING TITLE
Boundary Treatment Plan

SUITABILITY STATUS S4 : SUITABLE FOR STAGE APPROVAL	SCALE As indicated @ A1
PROJECT ORIGINATOR ZONE LEVEL TYPE ROLE CLASS NUMBER FS0816-STL-XX-ZZ-DR-L-00-1805	REVISION P04



1 Section Through Short Axis Of Modules
1 : 100



- 1

Temporary transport beams
Weight - beams reduced in length to reduce handling risk
- 2

Welding on site
Welding at height - first modules on site & access around modules to reduce risk
- 3

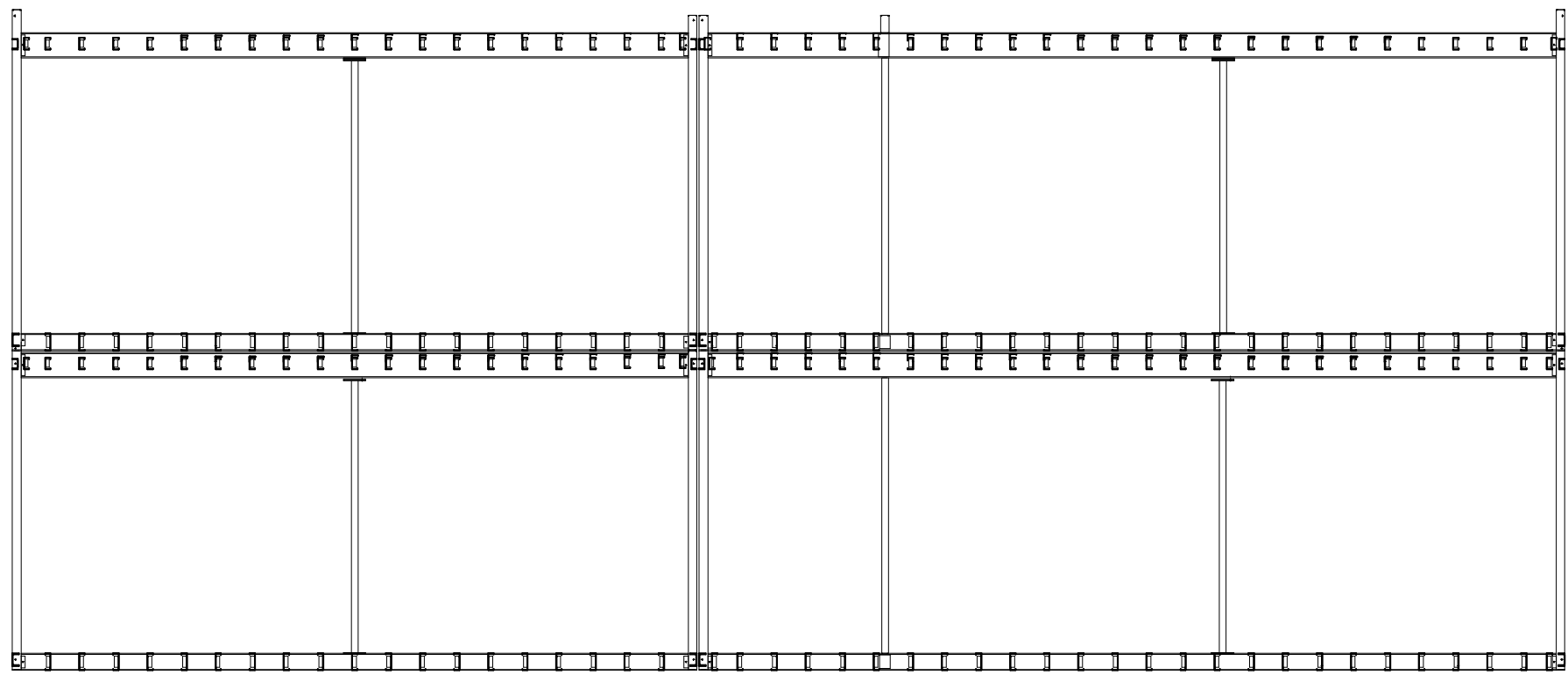
Weather proofing
Working at height on roof - parapet panels in place to reduce falling risk
- 4

Lift shaft
Aperture in steel chassis - wall panels installed to restrict access
- 5

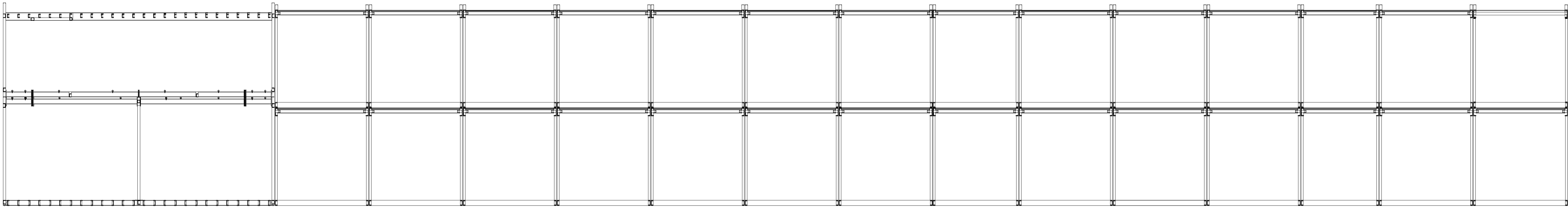
Holding down
Drilling length into foundations - magnetic drill to secure drill bit during operation
- 6

Temporary transport posts
Weight & height - Posts bolted to beams to ease removal & beam positioned to limit post height

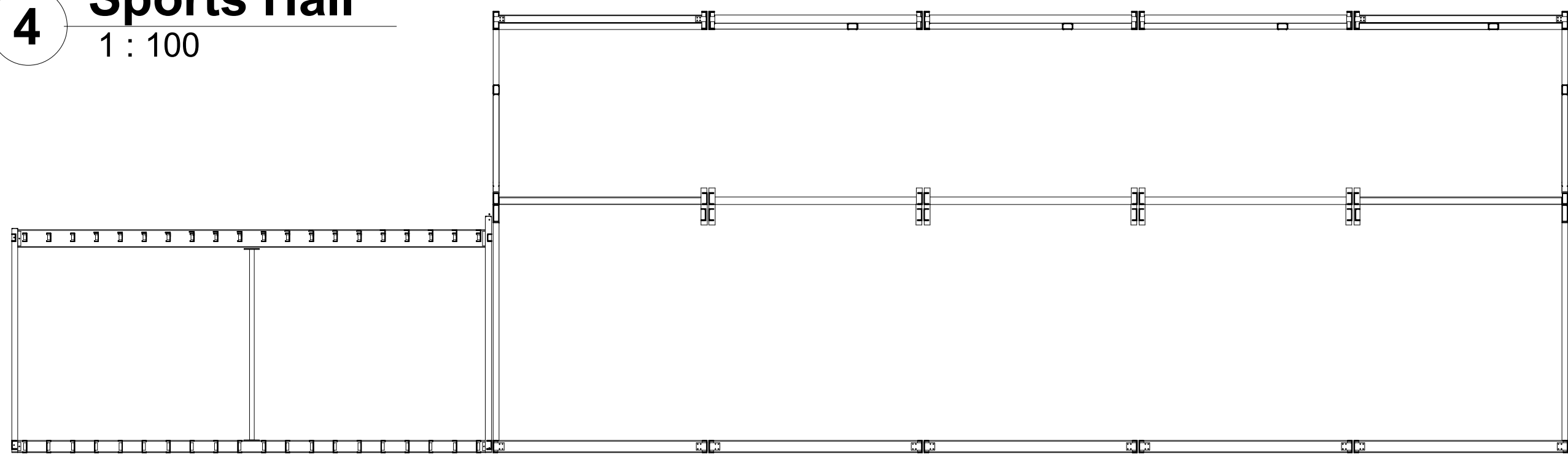
3 Section Through Long Axis Of Modules
1 : 100



2 Section Through Short Axis Of Modules Including Sports Hall
1 : 100



4 Section Through Long Axis Of Modules Including Sports Hall
1 : 100



NOTES :

P01	Preliminary Issue	25/06/2	TP	RF
Rev.	Description.	Date	Chk	APP
Revision Schedule				