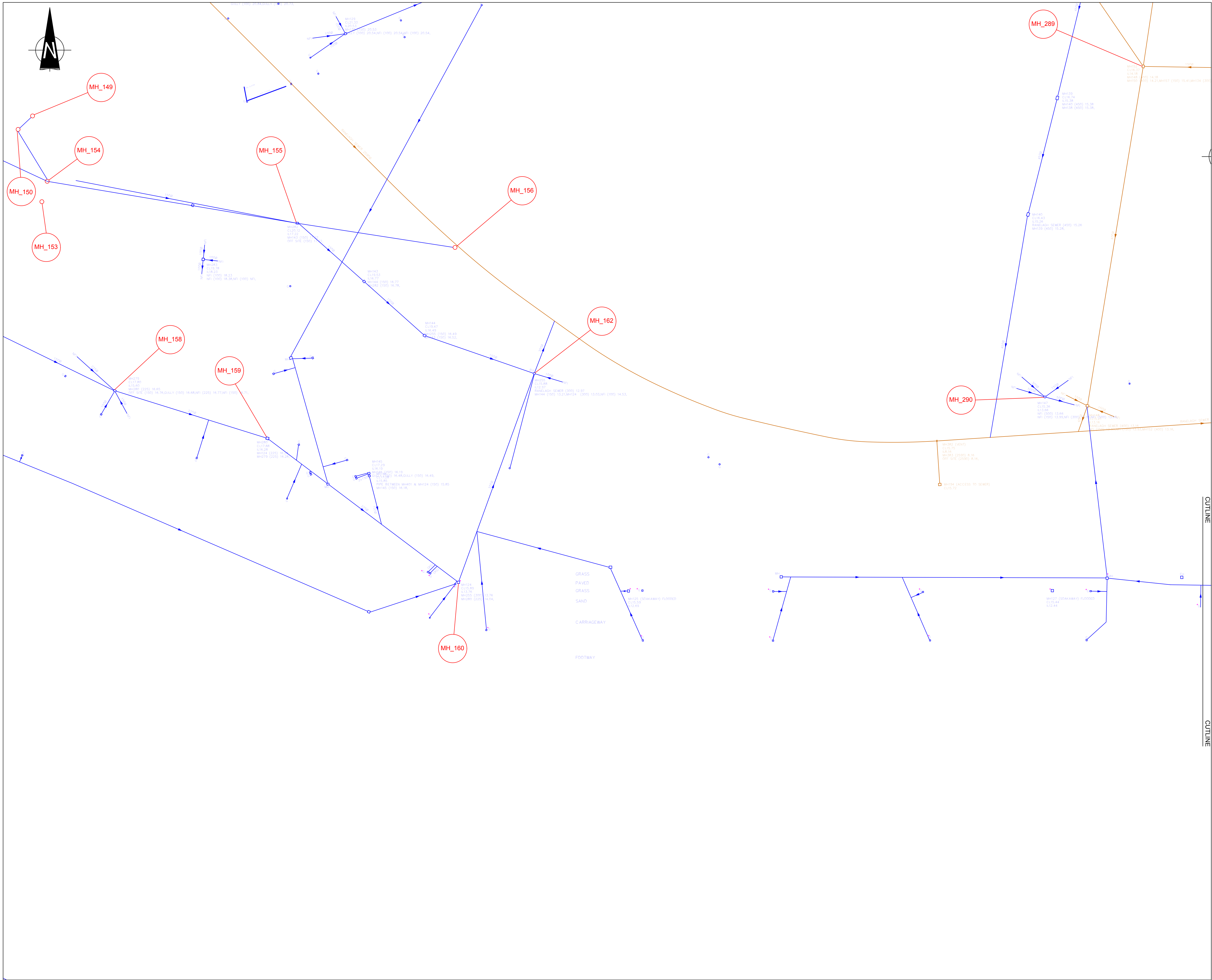


\\hnh\Projects\HHH91898B - The Royal Parks - Drainage\Autocad & PDFs\HHH91898B-HPSR-EX-06a-003 TO 006.dwg



THIS DRAWING WAS PRODUCED USING AUTOCAD
AND SHOULD ON NO ACCOUNT BE AMENDED BY HAND

REV	DATE		BY	CHKD	APPD

• NOTES

• CLIENT

THE ROYAL PARKS

• PROJECT

THE ROYAL PARKS –
DRAINAGE IMPROVEMENTS

• TITLE

SERPENTINE ROAD
DRAINAGE – HYDE PARK
SHEET 1 OF 4

• DATE	19/08/2009	PRODUCED BY	MEC
• SCALE	1:500	CHECKED	ML
• CAD REF	HHH91898B/HPSR/EX-DRA/003	APPROVED	EI



Parsons Brinckerhoff Ltd

Parsons Brinckerhoff, 6 Devonshire Square, London, EC2M 4YE
Tel: 44-(0)20 7337 1700 Fax: 44-(0)20 7337 1701

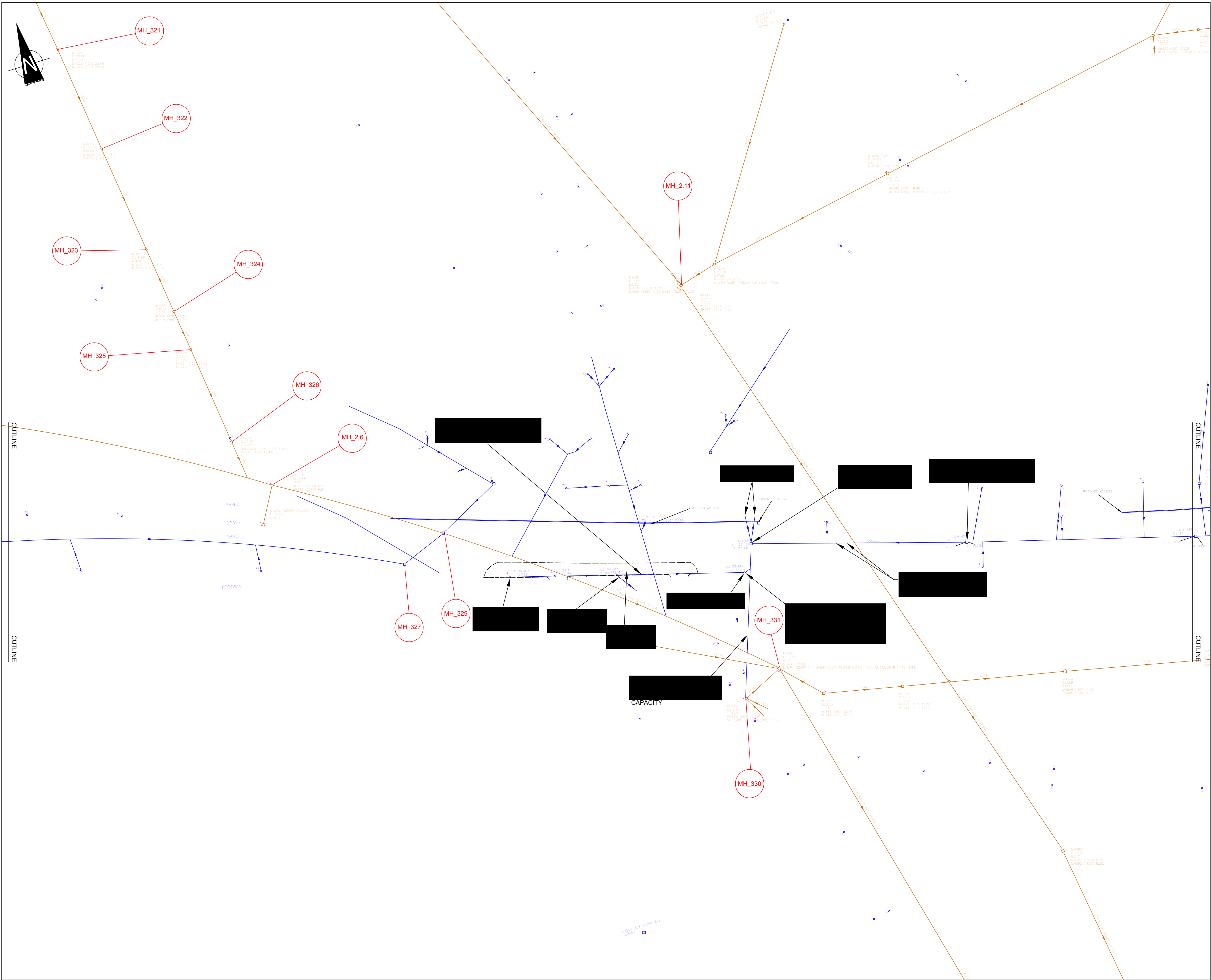
• DRAWING NUMBER

HHH91898B/HPSR/EX-DRA/003

• ORIGINAL DRAWING SIZE

A1

\\hnh\Projects\Hhh91898B - The Royal Parks - Drainage\Autocad & PDFs\HHH91898B-HPSR-EX-DRG-003 TO 006.dwg



THIS DRAWING WAS PRODUCED USING AUTOCAD
AND SHOULD ON NO ACCOUNT BE AMENDED BY HAND

REV	DATE		BY	CHKD	APPD

- NOTES
- 1. ALL CHAMBERS AND GULLIES SURVEYED BY CSG LLOYDS ENVIRONMENTAL IN OCTOBER 2009 HAVE SUMPS.
- 2. MUCH OF THE EXISTING PIPEWORK HAS OPEN JOINTS TO VARYING EXTENTS. TREE ROOTS WILL RE-PENETRATE IN TIME.
- 3. FOR PRECISE CONDITION DETAILS REFER TO CSG LLOYDS ENVIRONMENTAL DVD AND REPORTS.
- 4. CATCHPITS IN THE HORSE RIDE MADE FROM PRECAST CONCRETE SQUARE SECTIONS.
- 5. CATCHPIT POSITIONS MARKED WITH CUT MARKS IN THE GRANITE KERB.

CLIENT
THE ROYAL PARKS

PROJECT
THE ROYAL PARKS –
DRAINAGE IMPROVEMENTS

TITLE
SERPENTINE ROAD EXISTING
DRAINAGE – HYDE PARK

DATE	19/08/2009	PRODUCED BY	MEC
SCALE	1:500	CHECKED	ML
CAD REF	HHH91898B/HPSR/EX-DRG/005	APPROVED	EI

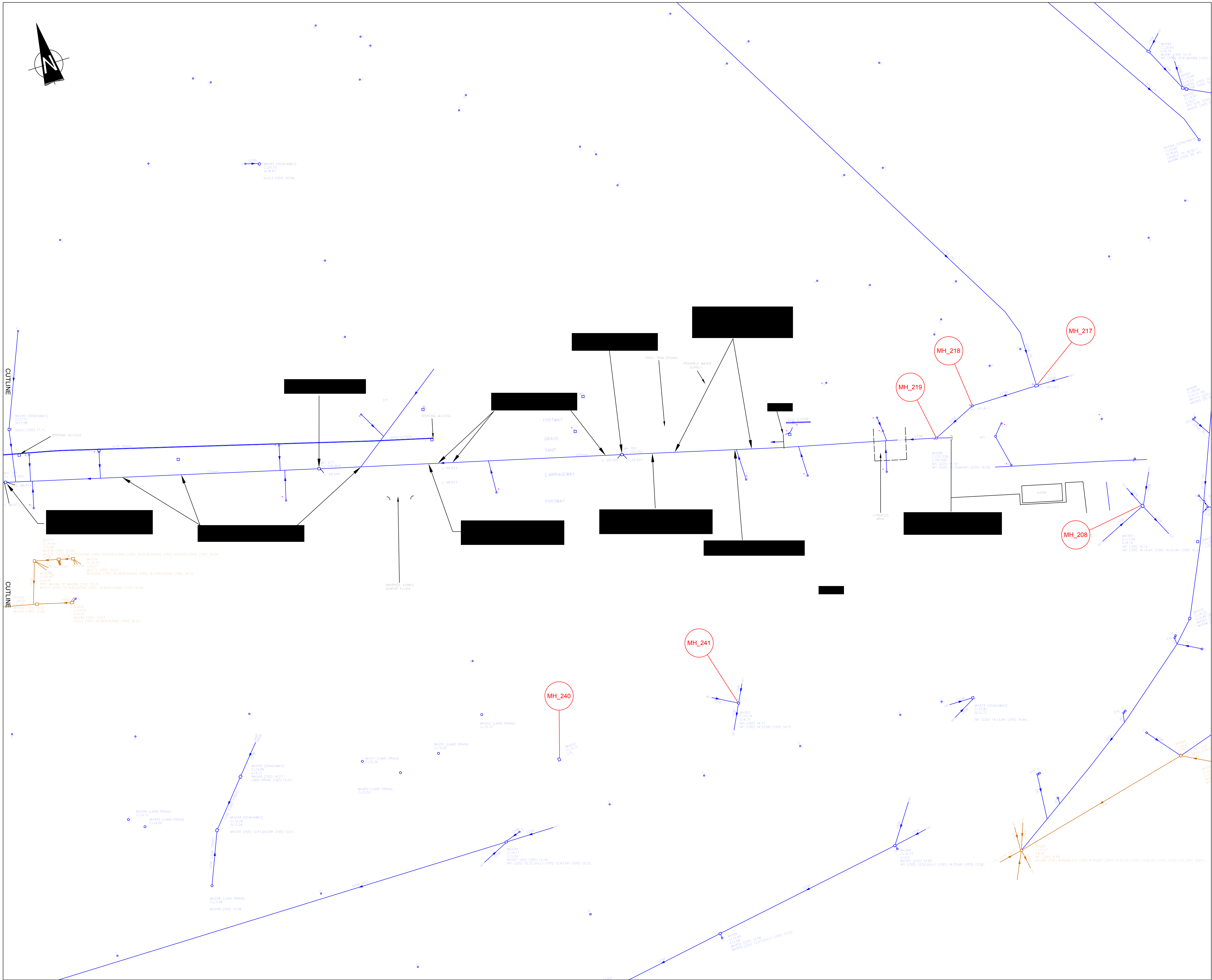


Parsons Brinckerhoff Ltd
Parsons Brinckerhoff, 6 Devonshire Square, London, EC2M 4YE
Tel: 44-(0)20 7337 1700 Fax: 44-(0)20 7337 1701

DRAWING NUMBER
HHH91898B/HPSR/EX-DRG/005 | —

ORIGINAL DRAWING SIZE
A1

\\hnh\Projects\Hhh91898B - The Royal Parks - Drainage\Autocad & PDFs\Hhh91898B-HPSR-EX-06A-003 TO 006.dwg



THIS DRAWING WAS PRODUCED USING AUTOCAD
AND SHOULD ON NO ACCOUNT BE AMENDED BY HAND

REV	DATE		BY	CHKD	APPD

NOTES

- ALL CHAMBERS AND GULLIES SURVEYED BY CSG LLOYDS ENVIRONMENTAL IN OCTOBER 2009 HAVE SUMPS.
- MUCH OF THE EXISTING PIPEWORK HAS OPEN JOINTS TO VARYING EXTENTS. TREE ROOTS WILL RE-PENETRATE IN TIME.
- FOR PRECISE CONDITION DETAILS REFER TO CSG LLOYDS ENVIRONMENTAL DVD AND REPORTS.
- CATCHPITS IN THE HORSE RIDE MADE FROM PRECAST CONCRETE SQUARE SECTIONS.
- CATCHPIT POSITIONS MARKED WITH CUT MARKS IN THE GRANITE KERB.

CLIENT

THE ROYAL PARKS

PROJECT

THE ROYAL PARKS –
DRAINAGE IMPROVEMENTS

TITLE

SERPENTINE ROAD EXISTING
DRAINAGE – HYDE PARK

DATE	19/08/09	PRODUCED BY	MEC
SCALE	1:500	CHECKED	ML
CAD REF	Hhh91898B/HPSR/EX-DRA/006	APPROVED	EI



Parsons Brinckerhoff Ltd

Parsons Brinckerhoff, 6 Devonshire Square, London, EC2M 4YE
Tel: 44-(0)20 7337 1700 Fax: 44-(0)20 7337 1701

DRAWING NUMBER

Hhh91898B/HPSR/EX-DRA/006

ORIGINAL DRAWING SIZE

A1