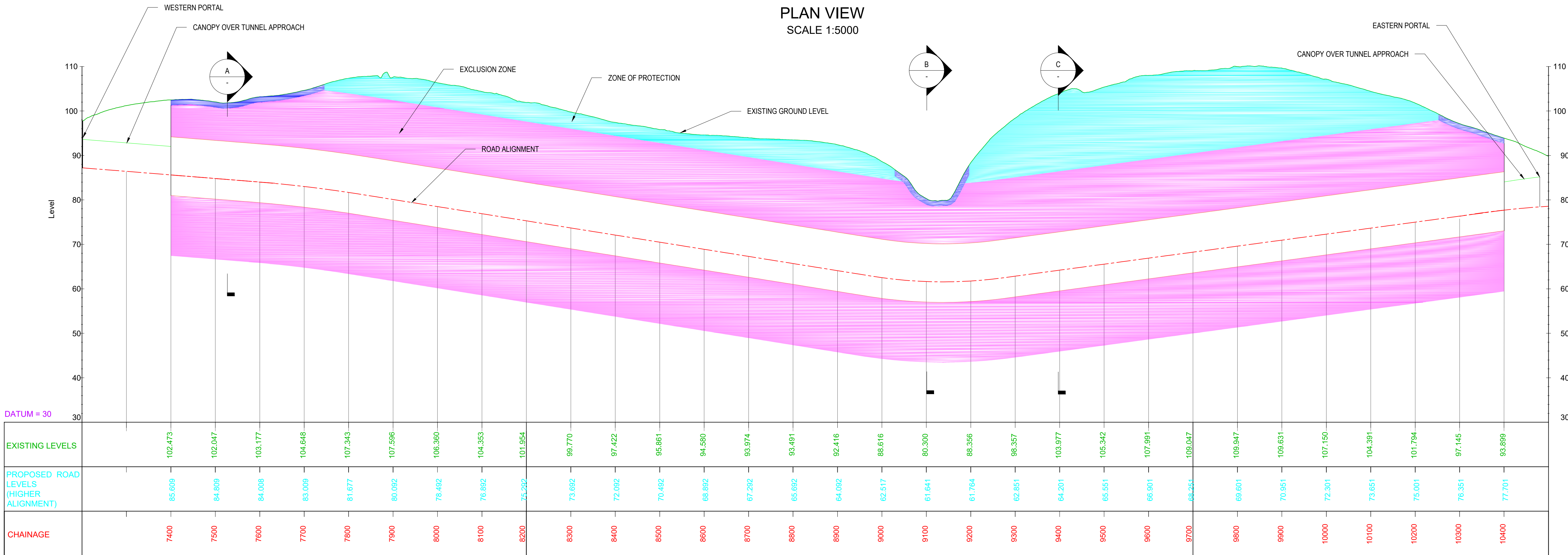
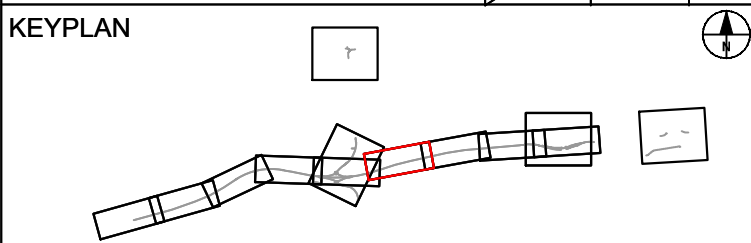


- NOTES:
- DO NOT SCALE FROM THIS DRAWING, USE ONLY PRINTED DIMENSIONS.
 - ALL CHAINAGES, LEVELS AND COORDINATES ARE IN METRES UNLESS DEFINED OTHERWISE.
 - THE DESIGN SHOWN ON THIS DRAWING IS ILLUSTRATIVE AND WILL BE SUBJECT TO DETAILED DESIGN DEVELOPMENT. ANY CHANGES WILL BE LIMITED TO BEING WITHIN THE ORDER LIMITS AND ANY OTHER CONSTRAINTS (E.G. LIMITS OF DEVIATION) INCLUDED IN THE DEVELOPMENT CONSENT ORDER.

- KEY:
- PERMANENT ACQUISITION
 - RESTRICTED ZONE 1 - FULL RESTRICTION : 0.6m DEPTH
 - RESTRICTED ZONE 2 - REDUCED RESTRICTION : 1.2m DEPTH



For Tender, 6 April 2020	VM	08/04/20	P01	
Revision Details		By	Check	Date
		MA		



Purpose of issue
FOR TENDER



Project Title
**A303
Amesbury to Berwick Down
(Stonehenge)**

Drawing Title
**TUNNEL
LONGITUDINAL SECTION
UPPER ALIGNMENT
LAND REQUIREMENTS**

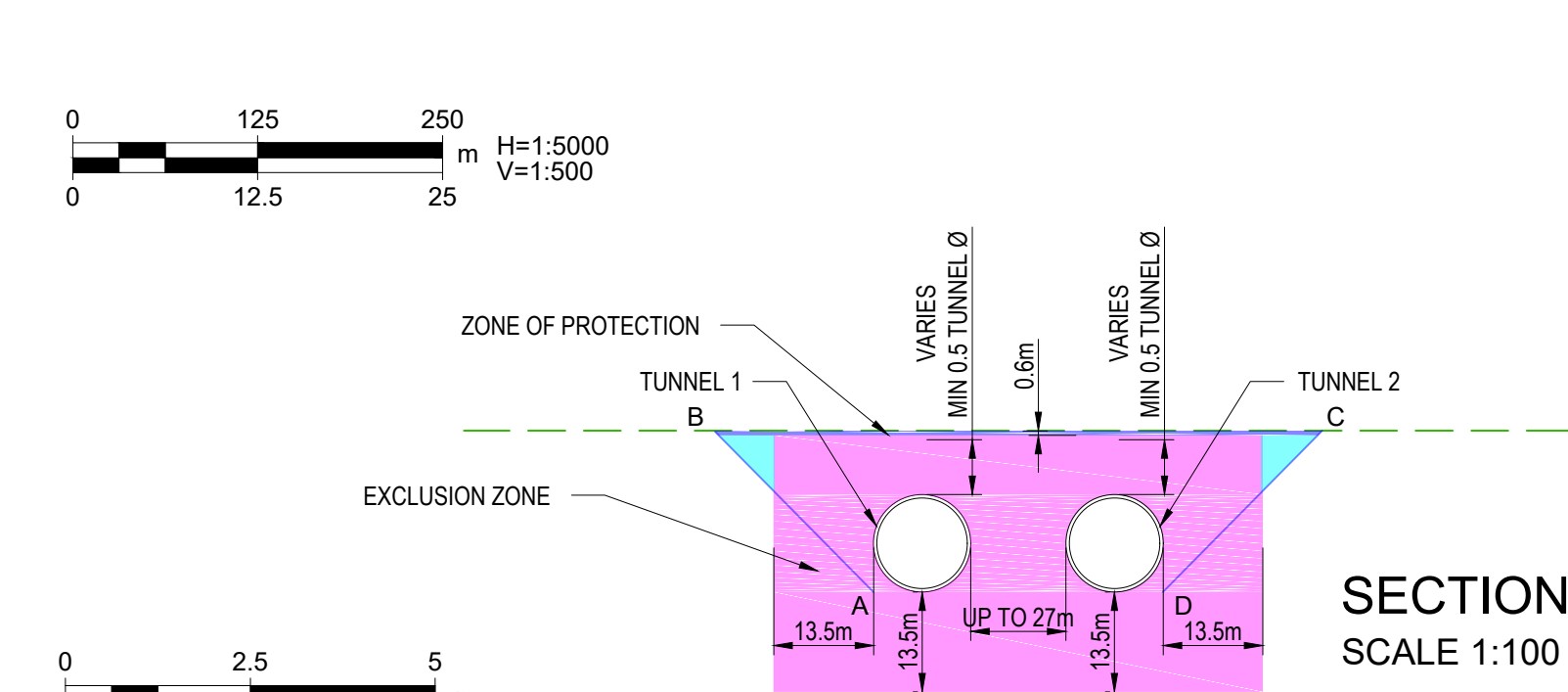
Designed TT	Drawn VM	Checked TT	Approved MA	Date 05/03/20
Internal Project No. 60541439		Suitability D2		
Scale @ A1 AS SHOWN		Zone Z3-Tunnel Ch6700-11100		

THIS DOCUMENT HAS BEEN PREPARED PURSUANT TO AND SUBJECT TO THE TERMS OF AmW'S APPOINTMENT BY ITS CLIENT. AmW ACCEPTS NO LIABILITY FOR ANY USE OF THIS DOCUMENT OTHER THAN BY ITS ORIGINAL CLIENT OR FOLLOWING AmW'S EXPRESS AGREEMENT TO SUCH USE, AND ONLY FOR THE PURPOSES FOR WHICH IT WAS PREPARED AND PROVIDED.

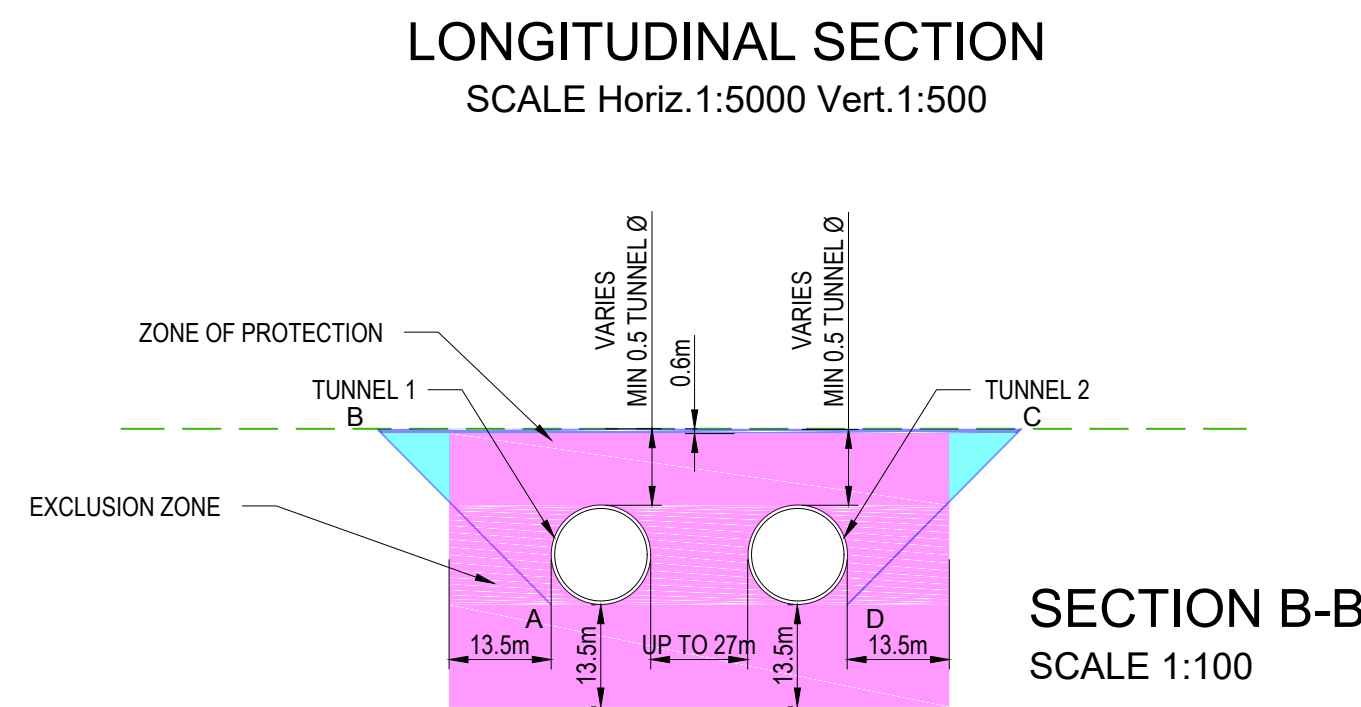
Highways England Project Office
Temple Quay House
2 The Square, Temple Quay
Bristol, BS1 6HA



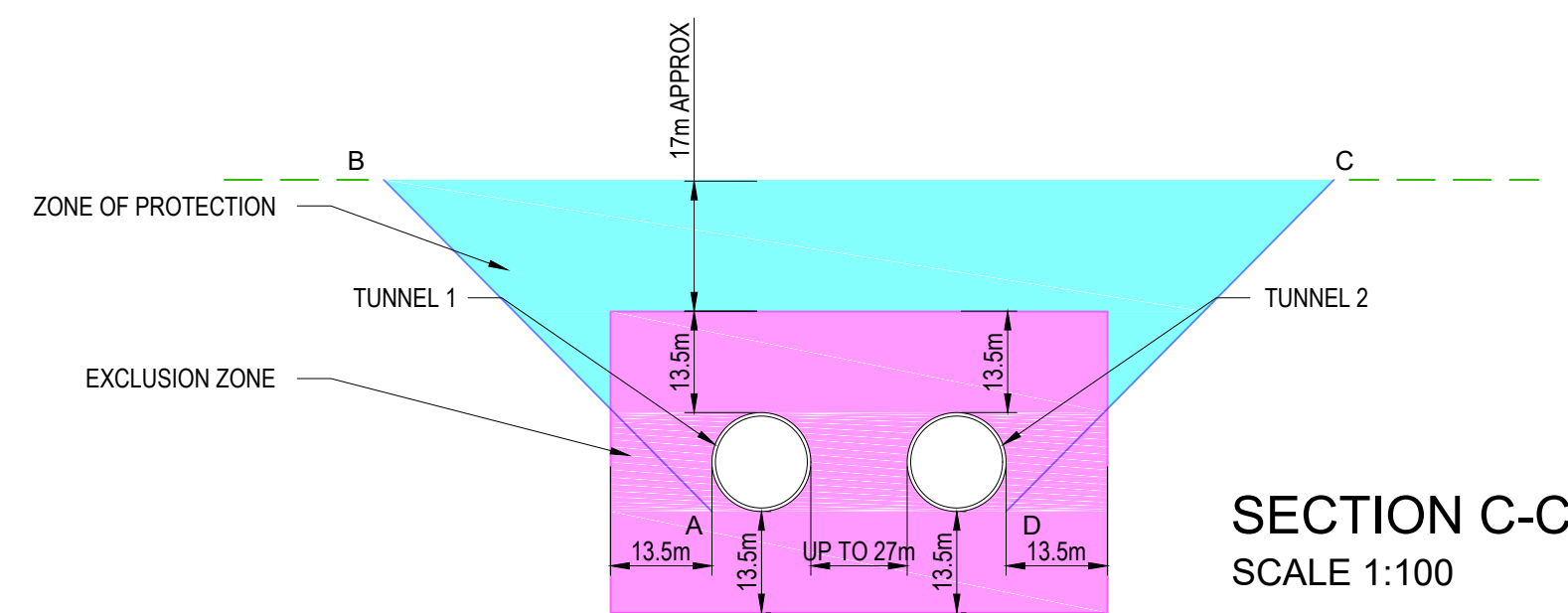
Drawing Number HE551506	I Originator -AMW	I Volume -STU -	Rev P01
Z3_ML_M00_Z	I Type -DR-CT-4001	I Number	



SECTION A-A
SCALE 1:100



SECTION B-B
SCALE 1:100



SECTION C-C
SCALE 1:100