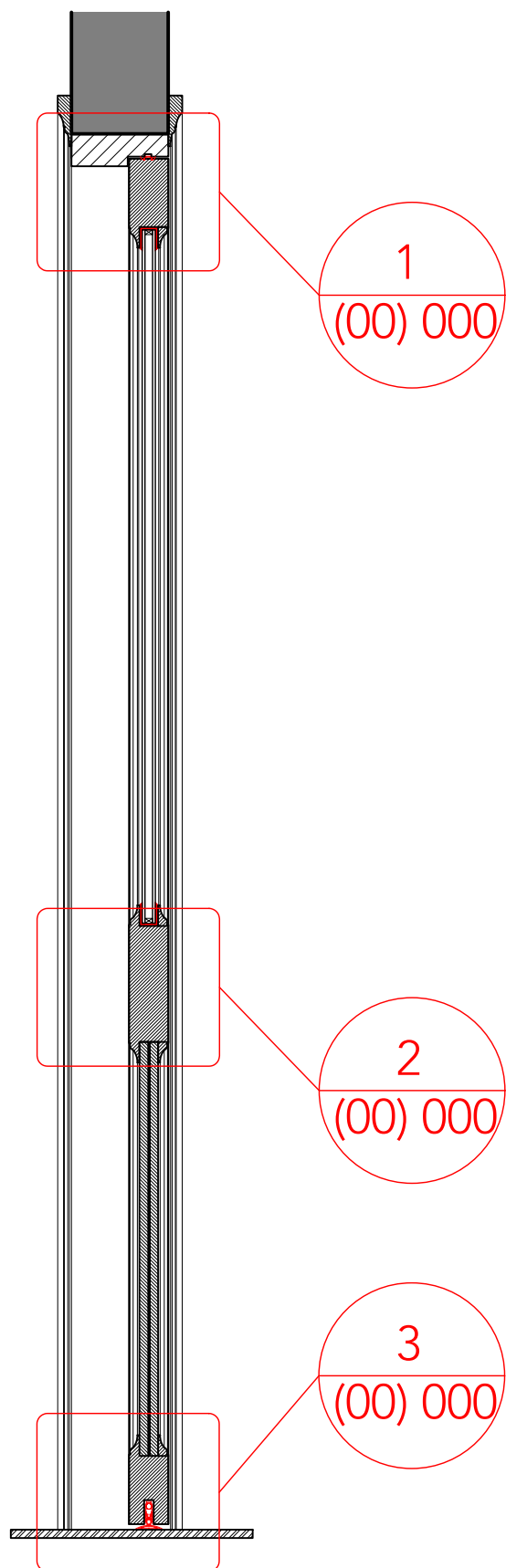
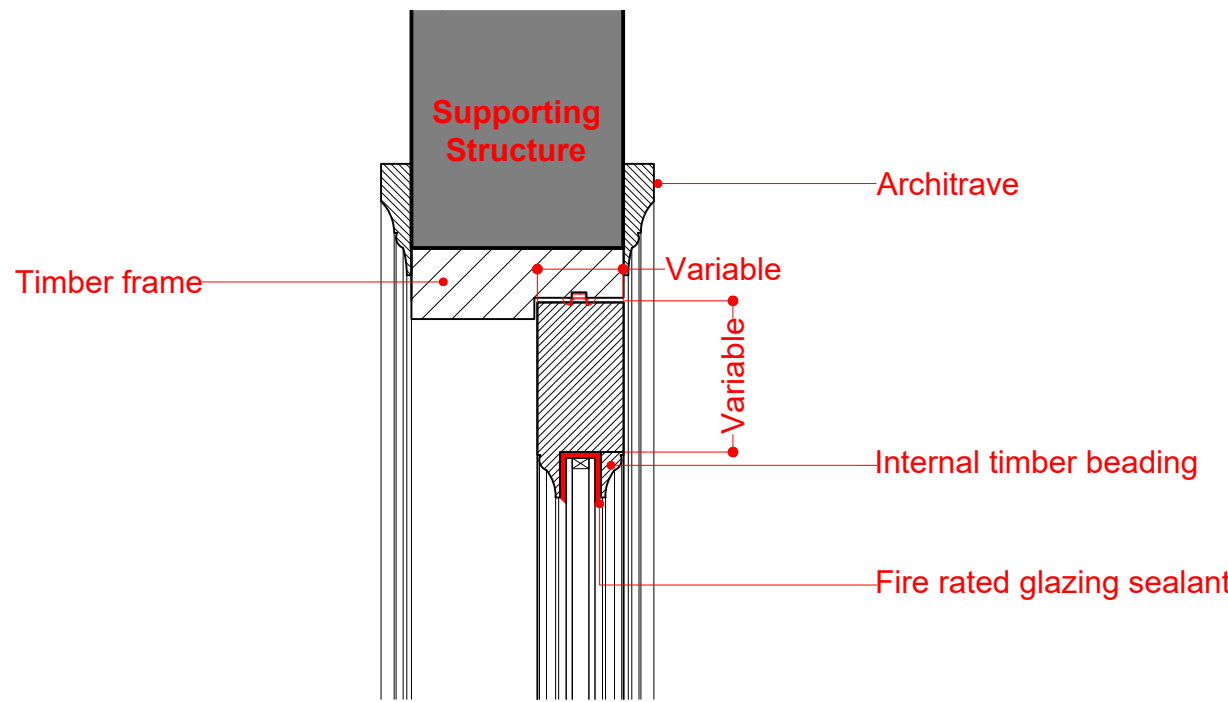


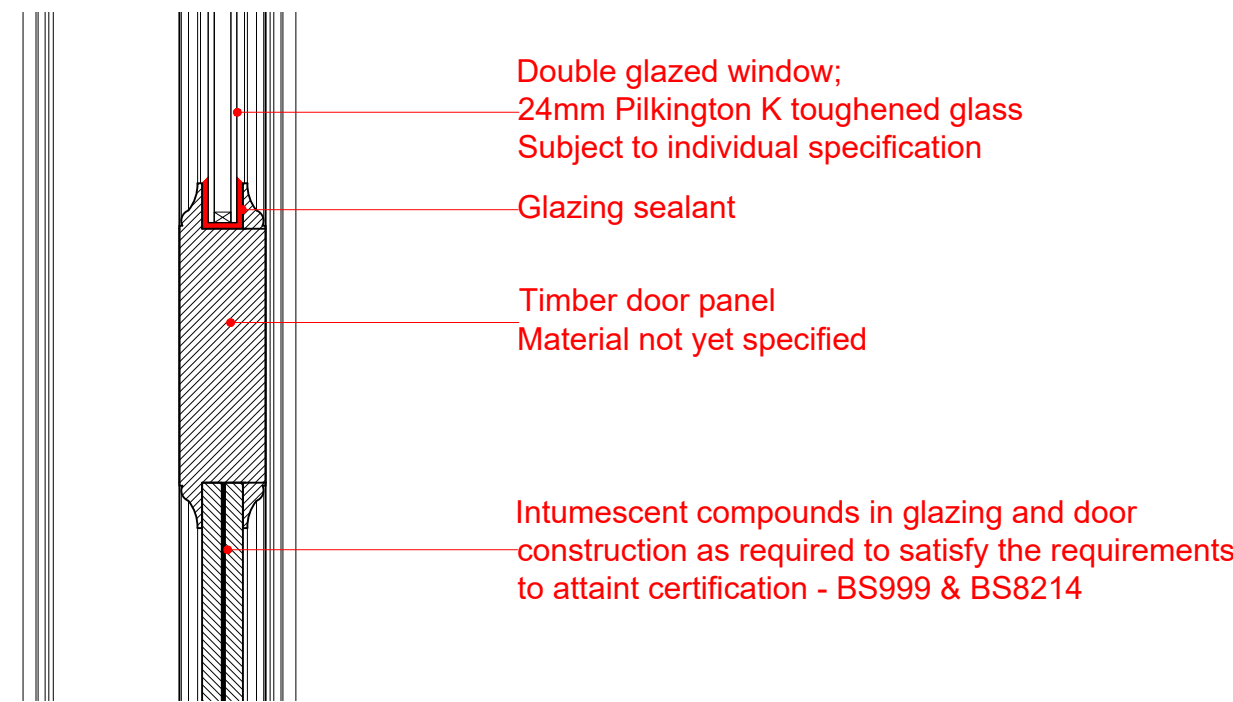
0 Internal Timber Door w/ Glazed Panel Elevation
Scale 1:10 @ A1



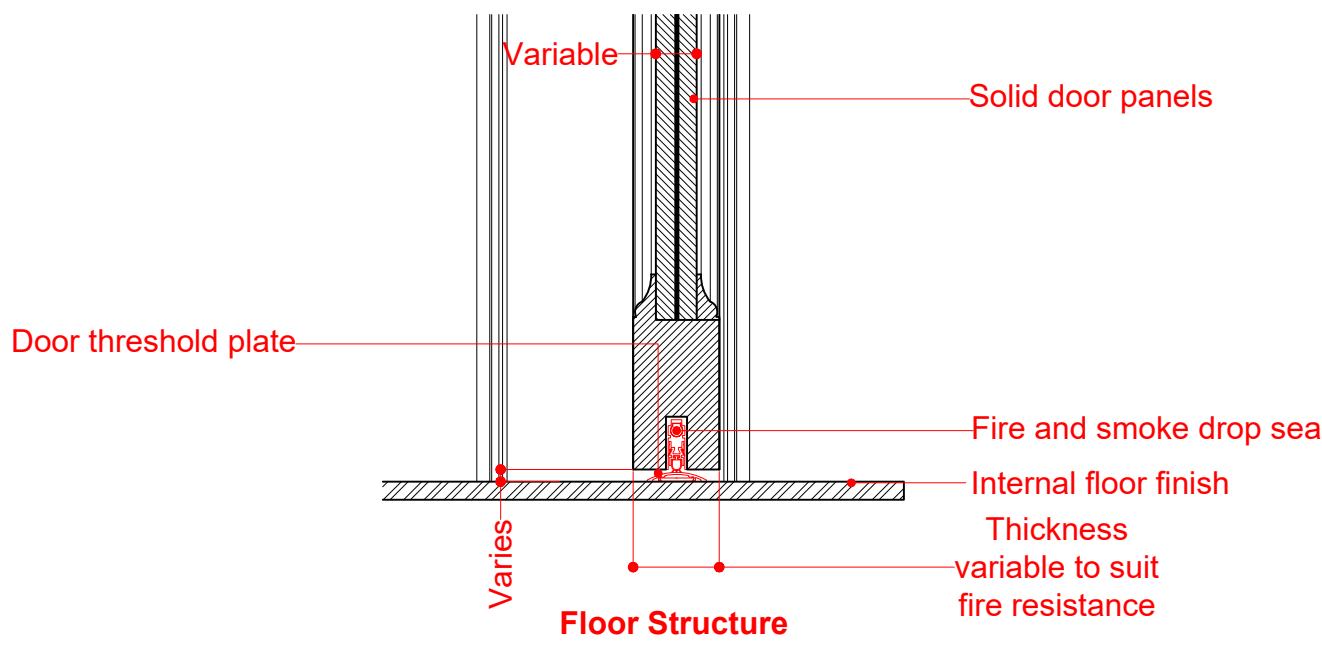
A Door Full Height Section
Scale 1:10 @ A1



1 Glazing Head Detail
Scale 1:5 @ A1



2 Door to Glazing Pane Junction Detail
Scale 1:5 @ A1

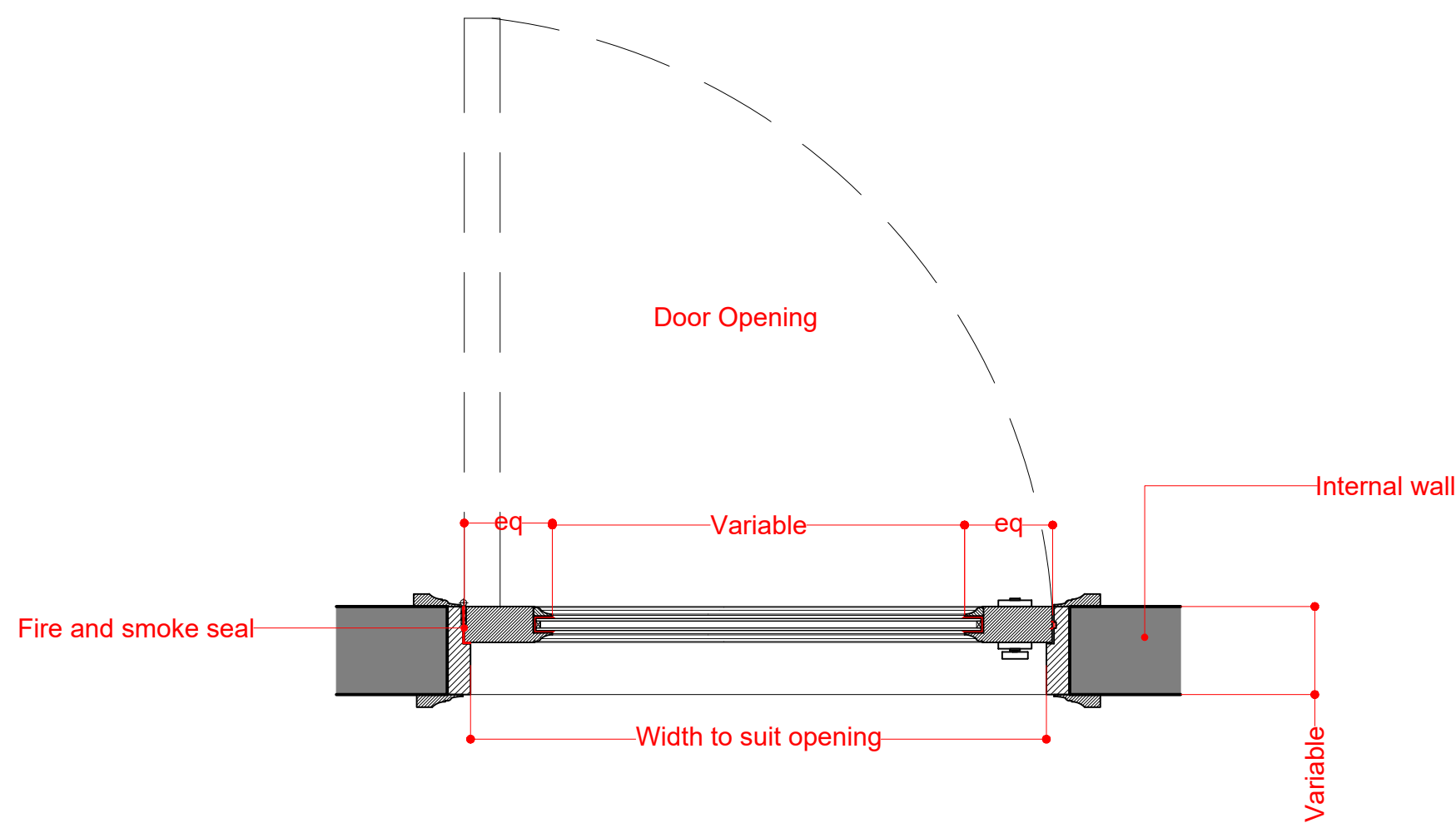


3 Door to Floor Junction Detail
Scale 1:5 @ A1

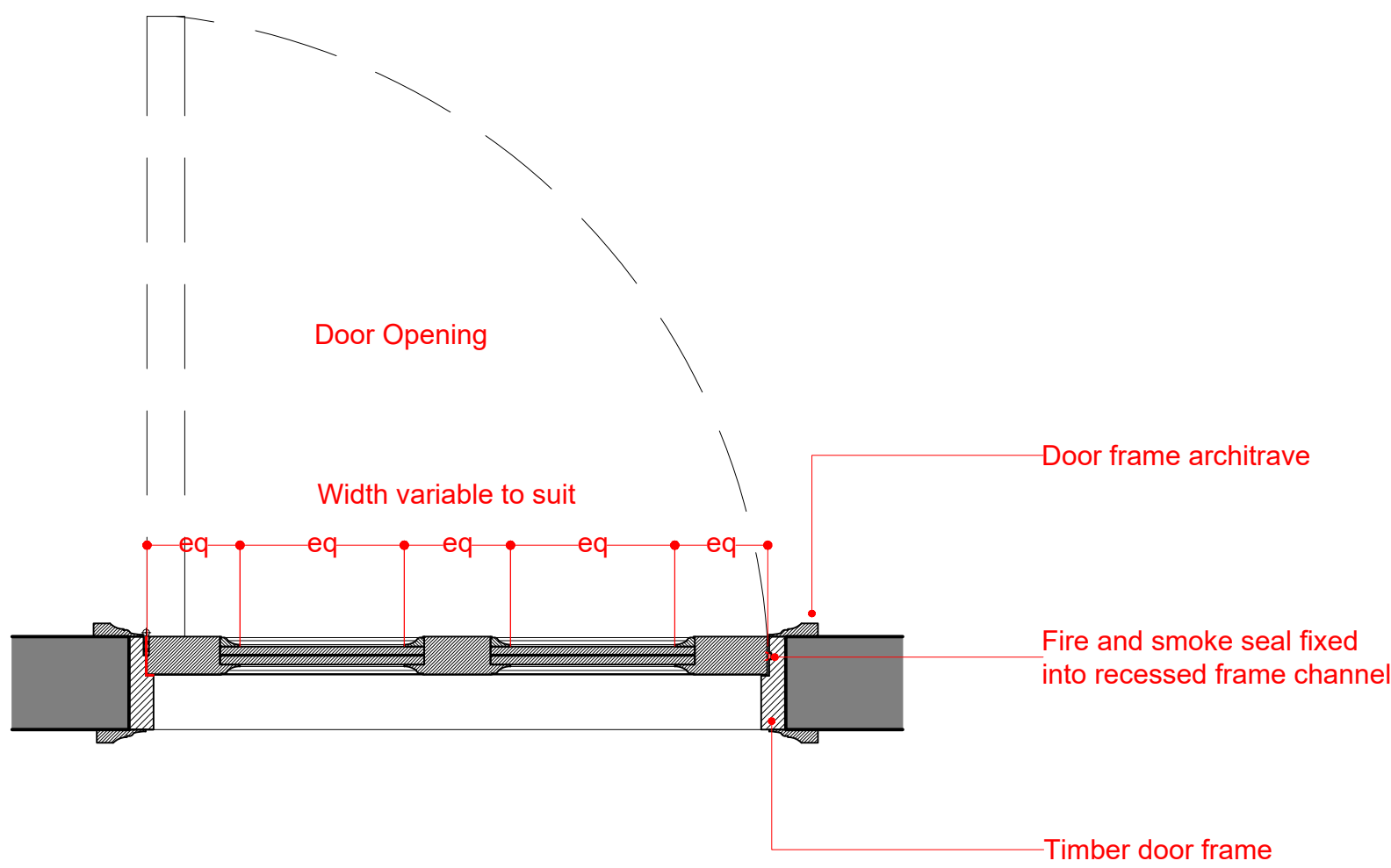
Rev 11/12/2020 Tender Review
LB

Rev Date/Intls Details

© The moral rights of the author are hereby asserted.
This drawing and design is the sole property of Buttress Ltd and must not be reproduced without permission.
Buttress Ltd is Registered in England and Wales: 3363123.



B Glazed Panel Detail Plan
Scale 1:5 @ A1



C Solid Timber Panel Plan
Scale 1:5 @ A1

Buttress

41, Bengal St
Manchester
M4 6AF

T 0161 236 3303
E contact@buttress.net
W www.buttress.net

Project Title	Bacup Derelict Buildings		
Client	Rossendale Borough Council		
Location	Bacup		
Drawing Title	Replacement Internal Timber Door Detail Drawings		
Date	11/12/2020	Scale	1:10 & 1:5
Checked	KC	Orig Paper Size	A1
Status Tender			
Drawing ref	Job No	Drawing No	Revision
	8920	(32) 003	B