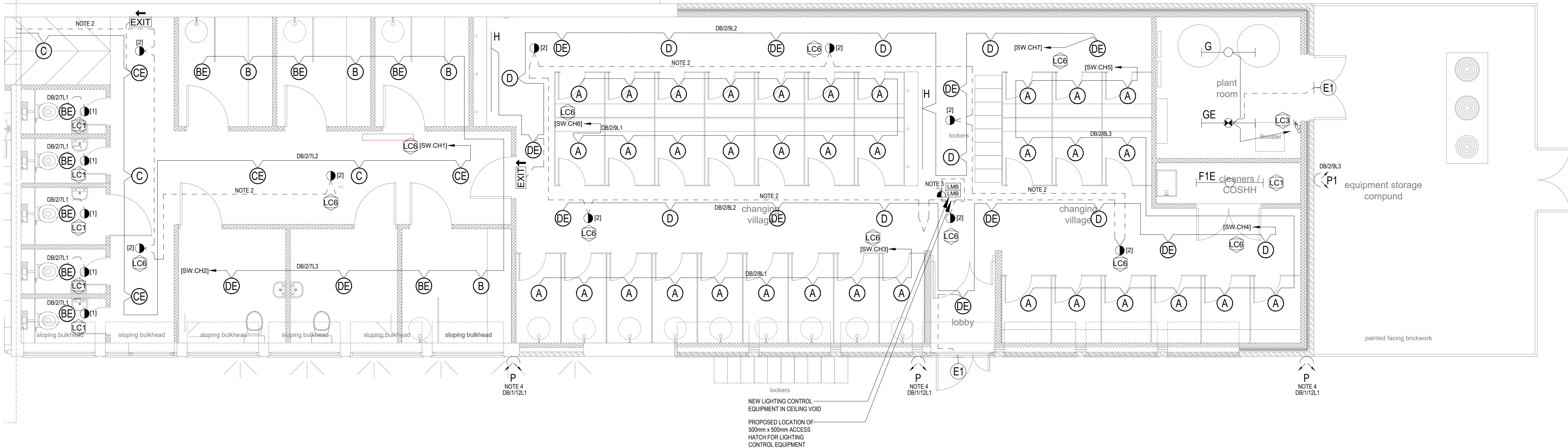
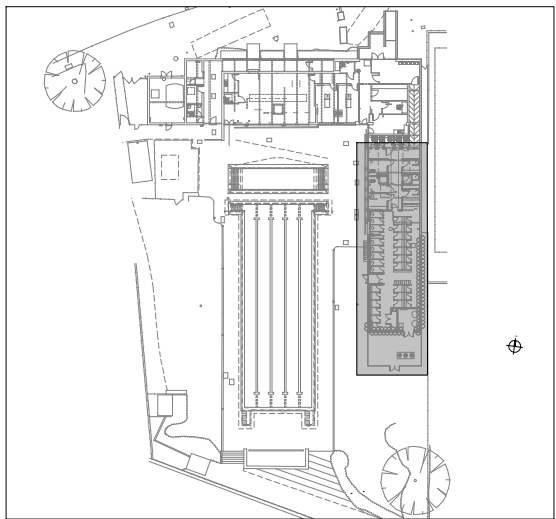


CONTINUATION LINE



Notes:

This drawing is not to be scaled. All dimensions to be checked on site and any discrepancies to be reported to Tyse Design and Consultancy Ltd. All material is produced on behalf of Tyse Design and Consultancy Ltd. All drawings to be read in conjunction with specification where applicable.
© Tyse Design & Consultancy Limited




LOCATION PLAN

DRAWING SPECIFIC NOTES:

- THIS DRAWING IS TO BE READ IN CONJUNCTION WITH THE ELECTRICAL ENGINEERING SERVICES SPECIFICATION
- LIGHTING CONTROL DETECTION DEVICES TO BE LINKED TO CONTROL THE AREA INDICATED.
- FUSED CONNECTION UNIT AT HIGH LEVEL FOR LIGHTING CONTROL MODULE.
- EXTERNAL LIGHTING CONTROLLED VIA TIME SWITCH, PHOTOCELL & CONTACTOR ARRANGEMENT LOCATED ADJACENT TO THE DISTRIBUTION BOARD. PROVIDE OVERRIDE SWITCH WITHIN NEW RECEPTION OFFICE.
- REFER TO DRAWING E03 FOR LEGEND AND SCHEDULE OF SYMBOLS.
- REFER TO DRAWING E02 FOR DISTRIBUTION BOARD SCHEDULES.

FINAL POSITIONS OF ALL ELECTRICAL ACCESSORIES TO BE CONFIRMED

T01	TENDER ISSUE	LT	15/10/24
P01	PRELIMINARY ISSUE	LT	9/10/24
REV:	DESCRIPTION:	BY:	DATE:
STATUS: TENDER ISSUE			



Tyse Design & Consultancy Limited
2 Osier Link,
Amphill,
Bedfordshire MK45 2TW
☎ 07954 450970
✉ lee@tyse设计.co.uk



PROJECT: WARE PRIORY LIDO,
PROPOSED EXTENSION & REFURBISHMENT
PRIORY STREET,
WARE SG12 0DE

TITLE: ELECTRICAL SERVICES PROPOSED LIGHTING LAYOUT (Sheet 2 of 2)			
SCALE AT A1: 1:50	DATE: October 2024	DRAWN: RT	CHECKED: LT
PROJECT NO: 240804	DRAWING NO: 240804/E/03	REVISION: T01	