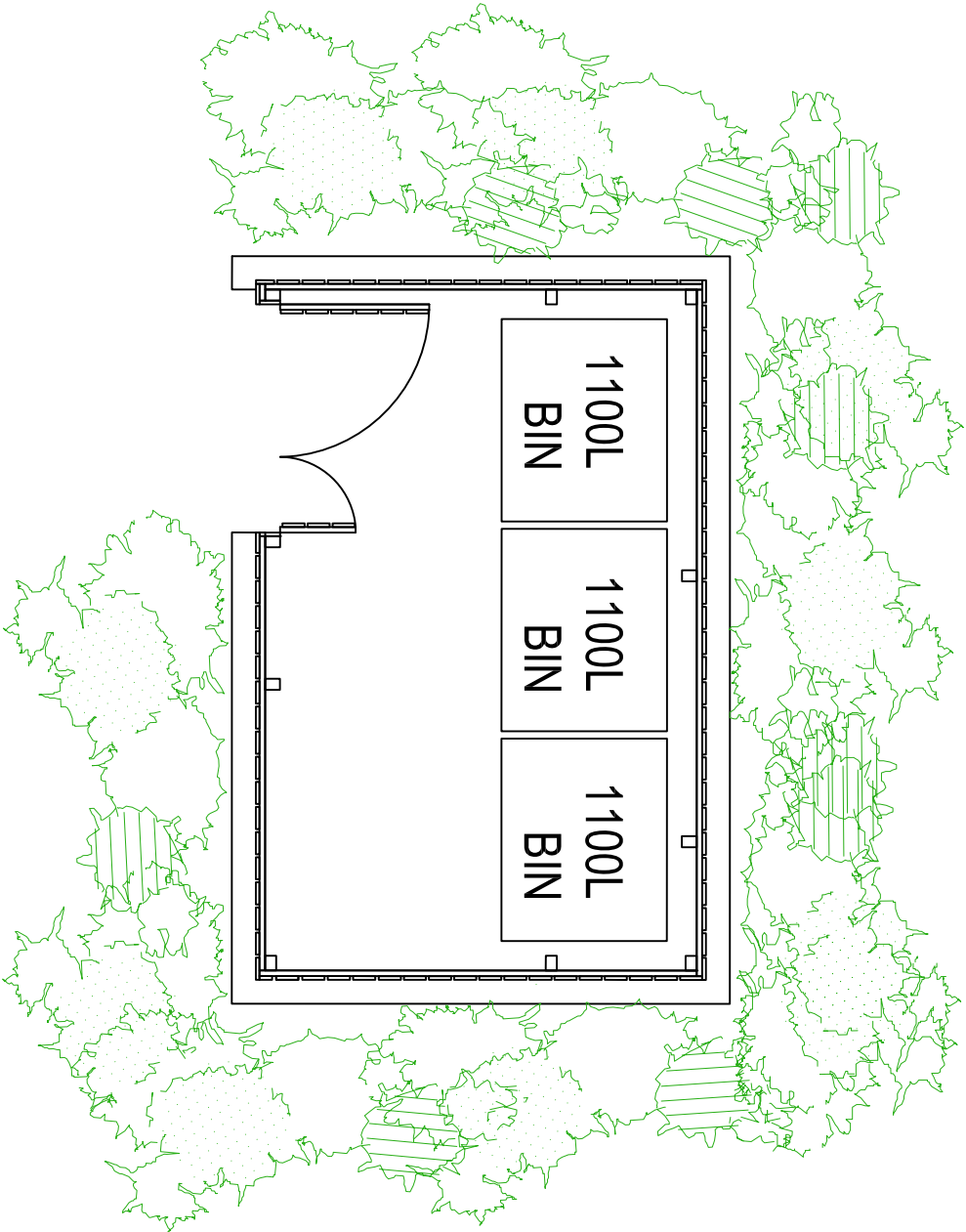
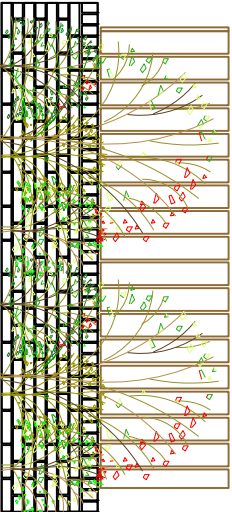


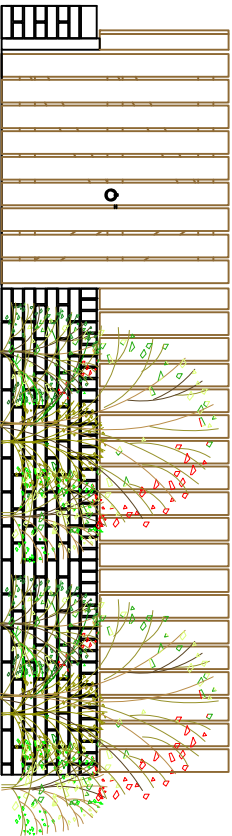
Bin Area Layout



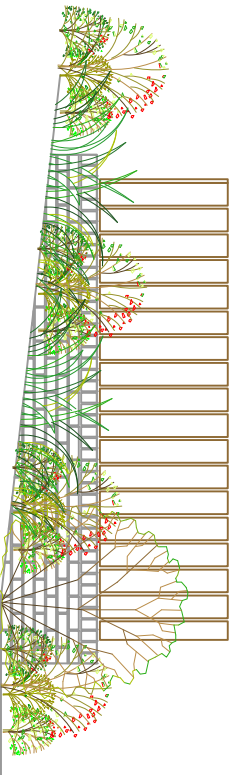
End Elevation




Front Elevation



End elevation



Communal bin enclosures to be formed on existing grassed areas in locations set out on location drawing MG1.  
Enclosure to be formed with brick upstand walls approx 600mm high to match existing bricks of the flats.  
Timber or recycled plastic fencing (www.floris.co.uk, or similar) above to 1.5M overall height.  
Base to be precast concrete paving slabs to match existing.  
Access footpath to be 2m in width in matching surface material.  
Shrub planting to the perimeter in low maintenance plants as advised by landscape designer to extend 1M in border around all sides.  
Each location to contain 3no. 1100L communal skip bins on wheels.

 <b>Your Homes Newcastle</b> YHN House, Benton Park Road Newcastle upon Tyne, NE7 7LX Tel: 0191 2788600 <a href="http://www.yhn.org.uk">www.yhn.org.uk</a>	
Project <b>Manor Grove Wheelie Bin Enclosures</b>	
Drawing Title <b>Proposed Bin Stores</b>	
Drawn <b>PN</b>	
Date <b>November 2016</b>	
Scales: <b>1:50 A3</b>	
Job Number: <b>0</b>	
Drawing Number <b>MG2</b>	Revision <b>0</b>