

- LEGEND**
- ESCAPE DISTANCES
  - FIRE RATED 30mins
  - FIRE RATED 60mins
  - FD30S DOOR
  - FD30 DOOR
  - FIRE DOOR SIGNAGE: "FIRE DOOR KEEP SHUT"
  - FIRE DOOR SIGNAGE: "FIRE DOOR KEEP LOCKED"
  - FIRE DOOR SIGNAGE: "FIRE EXIT KEEP CLEAR"
  - ESCAPE SIGNAGE: WALL MOUNTED DIRECTIONAL FIRE SIGNAGE (NOTED DOUBLE SIDED - D.S. - WHERE REQUIRED) TO COMPLY WITH LATEST LEGISLATION INCLUDING BS 5499, HEALTH & SAFETY SIGNS AND SIGNALS REGS 1996
  - CO2 TYPE EXTINGUISHER
  - POWDER TYPE EXTINGUISHER
  - F CLASS TYPE EXTINGUISHER
  - WATER TYPE EXTINGUISHER
  - FIRE BLANKET
  - FIRE ALARM BREAK GLASS UNIT
  - SMOKE DETECTOR
  - SMOKE DETECTOR SOUNDER BEACON
  - HEAT DETECTOR SOUNDER BEACON
  - FIRE ALARM BEACON
  - FIRE ALARM EXTERNAL SOUNDER BEACON
  - FIRE ALARM PANEL
  - FIRE ALARM INTERFACE
  - DISABLED REFUGE INTERCOM

**NOTES:**

CLIENT TO APPOINT AN APPROPRIATE QUALIFIED PROFESSIONAL TO CARRY OUT FIRE RISK ASSESSMENT AND TO IDENTIFY FIRE EXTINGUISHER LOCATIONS.

FIRE AND SMOKE ALARM LOCATIONS AND FIRE SIGNAGE LAYOUT TO BE CONFIRMED BY M&E SPECIALIST.

FIRE EXTINGUISHER LOCATIONS FOLLOWING GUIDANCE OF BS 5306 PART 8 AND BASED UPON RECOMMENDATIONS PROVIDED BY FIRE ENGINEER.

MAIN BUILDING FIRE AND MOE STRATEGY TO REMAIN UNALTERED.

FIRE RESISTANCE:

PIPES OR DUCTWORK PASSING THROUGH FIRE RATED WALLING TO BE FITTED WITH FIRE DAMPERS AS REQUIRED.

FIRE SIGNAGE:

CONTRACTOR TO ENSURE THAT ALL ESCAPE ROUTES, CALL POINTS AND FIRE FIGHTING POINTS ARE IDENTIFIED ON A PLAN PRIOR TO FIXING ALL SIGNAGE FOR AGREEMENT WITH BUILDING CONTROL.

DOORWAYS AND CORRIDORS:

FD30(S) DOORS TO BE COMPLETE WITH SMOKE SEALS, INTUMESCENT STRIPS AND SELF-CLOSING DEVICES. ANY GLAZED PANELS IN FIRE DOORS TO BE CERTIFIED AS PART OF THE DOOR SET.

FIRE ALARM SYSTEM:

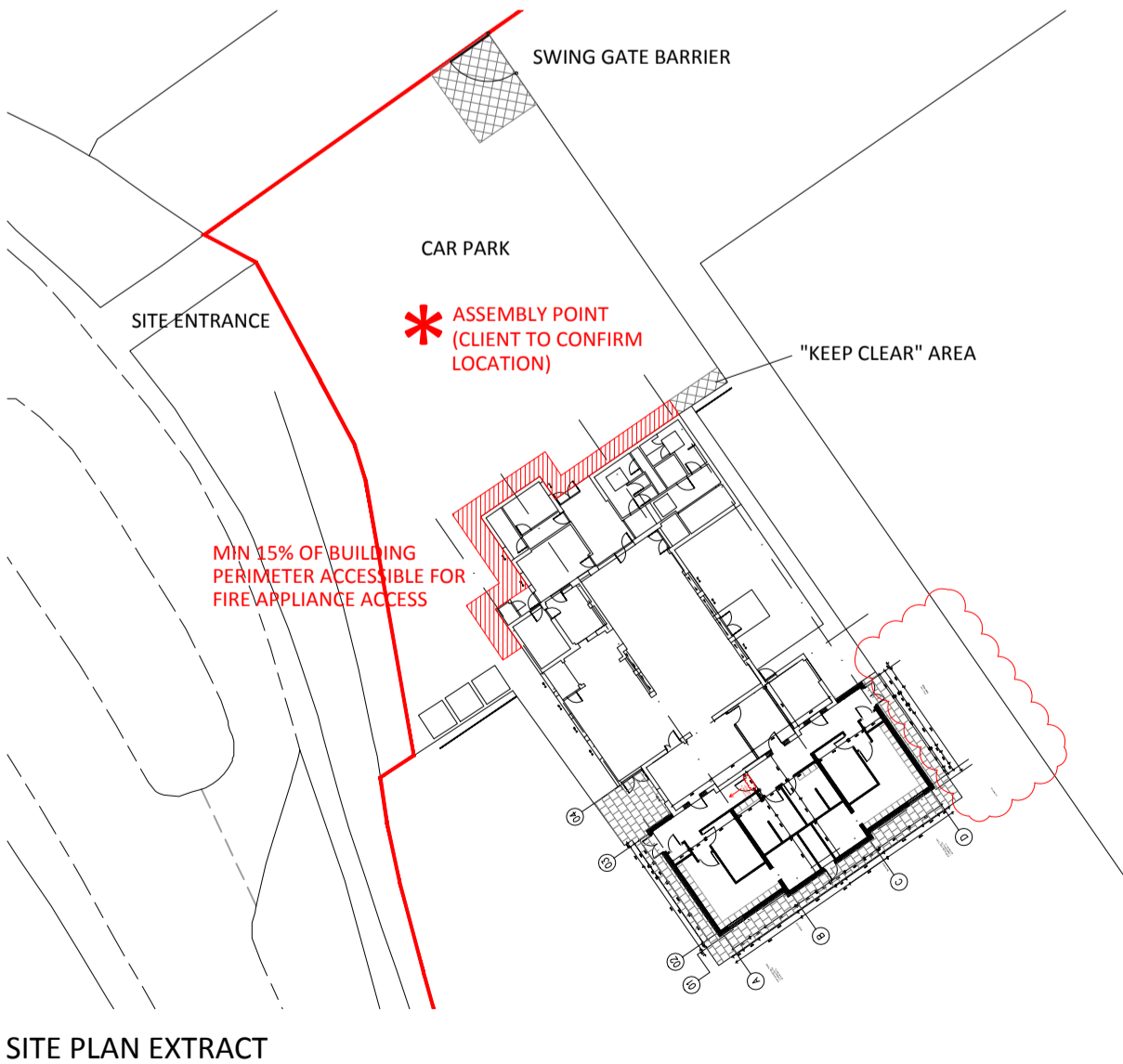
ALL SYSTEMS THAT REQUIRE POWER SHOULD HAVE A STANDBY POWER SUPPLY SUCH AS A BATTERY (EITHER RECHARGEABLE OR NON-RECHARGEABLE) OR CAPACITOR.

SMOKE ALARMS FIXED TO CEILINGS SHOULD BE LOCATED MINIMUM 300mm FROM ANY WALL OR ELECTRICAL FITTING. INCLUDE EMERGENCY LIGHTING IN ALL CIRCULATION AREAS.

FIRE ALARM SUB-CONTRACTOR TO PROVIDE DRAWINGS FOR BUILDING CONTROL APPROVAL.

OTHER NOTES:

PURPOSE GROUP OF BUILDING IS ASSEMBLY & RECREATION (APPENDIX, TABLE D1 OF APPROVED DOCUMENT B). THE FIRE ESCAPE STRATEGY HAS BEEN DESIGNED IN ACCORDANCE WITH PART B NON-DWELLING BUILDING REGULATIONS.



**NOTES**

This drawing to be read in accordance with the specification/Bills of Quantities and related drawings.

No Dimensions to be scaled from this drawing. All stated dimensions to be verified on site and the Architect notified of any discrepancies.

Scale bar 100mm at 1:1

MOE STRATEGY IS BASED UPON REQUIREMENTS OF APPROVED DOCUMENT B - FIRE SAFETY - THE BUILDING REGULATIONS 2010.			
OCCUPANT CAPACITY FOR FOOTBALL CHANGING ROOM EXTENSION			
PURPOSE GROUP: ASSEMBLY & RECREATION - APPENDIX D, TABLE D1			
SPACE FACTORS BASED ON APPENDIX C: TABLE C1			
TYPE OF ACCOMMODATION (GROUND FLOOR)	AREA m <sup>2</sup>	FLOOR SPACE FACTOR m <sup>2</sup> /PERSON	OCCUPANCY
TEAM CHANGING ROOM 01	20.1 m <sup>2</sup>	*	20
ACCESSIBLE CHANGING ROOM	13.1 m <sup>2</sup>	**	1
OFFICIALS CHANGING ROOM	10.7 m <sup>2</sup>	**	3
TEAM CHANGING ROOM 02	20.1 m <sup>2</sup>	*	20
PLAYERS BAR	12.5 m <sup>2</sup>	***	15
BAR	14 m <sup>2</sup>	****	3
KITCHENETTE	12.1 m <sup>2</sup>	****	3
<b>BUILDING TOTAL OCCUPANCY</b>			<b>65</b>

- \* TEAM CHANGING ROOM OCCUPANCY TO BE UP TO 20 PERSONS FOLLOWING EMPLOYER'S REQUIREMENTS TO ALIGN THE SCHEME WITH STEP 7 OF THE NATIONAL GROUND GRADING (ACCESSED APRIL 2019).
- \*\* OFFICIALS CHANGING ROOM OCCUPANCY TO ACCOMMODATE UP TO 4 OFFICIALS. THIS NUMBER IS AN EMPLOYER'S REQUIREMENT BASED ON THE CURRENT LEVEL OF COMPETITION NATIONAL LEAGUE STEP 7.
- \*\*\* LIKELY FIGURE TO FACILITATE SUPPORTING STAFF & SPECTATORS.
- \*\*\*\* BAR AND KITCHENETTE TO BE OPERATED BY MEMBERS OF STAFF. OCCUPANCY FOLLOWING EMPLOYER'S REQUIREMENTS.

TRAVEL DISTANCES - TABLE 2, PURPOSE GROUP 5C (RELATES TO EXTENSION)		
MAX SINGLE DIRECTION	18m	
MAX IN MORE THAN ONE DIRECTION	45m	
MOE FIRE EXIT CLEAR WIDTHS - TABLE 4		
FIRE EXIT	EFFECTIVE CLEAR OPENING	EXIT CAPACITY
MOE 1	1397mm	279 PEOPLE
MOE 2	1397mm	279 PEOPLE
TOTAL EXIT CAPACITY MINUS LARGEST EXIT (SHOWN IN RED)		279 PEOPLE
ACTUAL BUILDING OCCUPANCY		65

NOTE: EXISTING EXTERNAL DOOR OFF KITCHENETTE TO BECOME MOE 3 WITH EFFECTIVE CLEAR OPENING OF 840mm TO ALLOW FOR 60 PEOPLE

ROOFLIGHTS - TABLE 11 DIAGRAM 27		
ROOFLIGHT MAXIMUM AREA PER 5m x 5m GROUP	5m <sup>2</sup>	
LOCATION	ROOM AREA	ROOFLIGHT AREA
TEAM CHANGING ROOM	20.1m <sup>2</sup>	2.16m <sup>2</sup>
CORRIDOR 01	15.7m <sup>2</sup>	1.08m <sup>2</sup>
CORRIDOR 02	21.2m <sup>2</sup>	1.08m <sup>2</sup>

FIRE APPLIANCE STRATEGY - TABLE 19	
TOTAL BUILDING GIA	480m <sup>2</sup>
BUILDING AREA CATEGORY	Up to 2000m <sup>2</sup>
BUILDING HEIGHT CATEGORY	Up to 11m
PERIMETER MINIMUM ACCESS REQUIREMENTS	15%
BUILDING PERIMETER	125.47m
PERIMETER ACCESSIBLE BY FIRE TENDER	35.23m (28%)

A	17.05.19	MINOR AMENDMENT TO LAYOUT (OFFICIALS CHANGING WALL LINED THROUGH) & ANNOTATION & LOFT HATCH MOVED TO EXTERNAL STORE	JDP
FOR TENDER			
REV	DATE	NOTE	BY

Project

**LEMSFORD VILLAGE HALL**  
**BROCKET ROAD**  
**WELWYN GARDEN CITY**  
**HERTFORDSHIRE**

Title

**PROPOSED EXTENSION & ALTERATION WORKS**  
**PROPOSED FIRE AND MOE STRATEGY**

Scale	Date
1:50 @ A1	MAY 19
Drawn	Checked
RG	AG
Drawing Number	Revision
<b>8067_115</b>	<b>A</b>

**Saunders**  
Architecture + Urban Design