

DRYSEAL SPECIFICATION

Preparation
The roof decking is to be of sound condition. Surface to be dry, free from debris, oil, grease and chemical contaminants.

- 1. Substrate
- 2. Ashphalt
- 3. Prepared surface

4. Insulation
Supply and fix rigid insulation board of a thickness to achieve the required 'U' value as specified; loose laid over vapour control layer with staggered joints.

The DRYSEAL system is compatible with any recognised roof grade rigid insulation board having sufficient compressive strength to resist indentation when fixed.

5. Dryseal membrane and trims:
Supply and mechanically fix pre-cured DRYSEAL membrane and trims all with 50mm side and end laps using approved anti-corrosive fixings and stress plates to achieve sufficient wind uplift resistance and at centres not exceeding 350mm.

Note: all membrane flat sheet is to be laid with the high adhesive (matt finish surface) up.

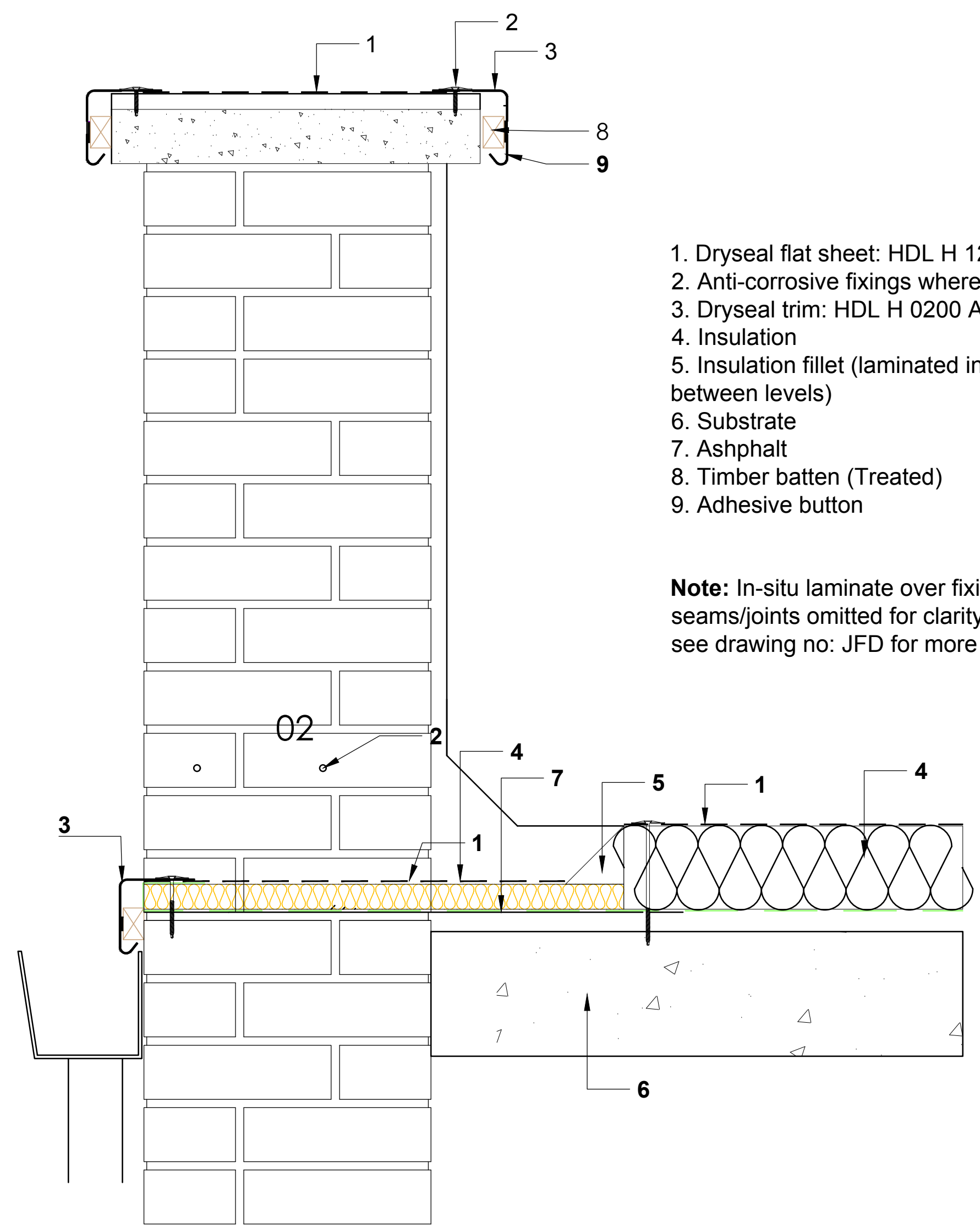
6. Dryseal top coat:
Apply Dryseal top coat system at a rate of 1 litre per 2m² maximum to all pre-cured and insitu GRP following thorough cleaning.#

Seams and laps
Supply and fix wet laminate to all seams/laps and exposed fixings. #

Note: # Refer to technical manual installation section

In-situ laminate over fixings and seams / joints omitted for clarity. Please see drawing no: JFD for more detail.

ation



- 1. Dryseal flat sheet: HDL H 1250F
- 2. Anti-corrosive fixings where required
- 3. Dryseal trim: HDL H 0200 A
- 4. Insulation
- 5. Insulation fillet (laminated in-situ between levels)
- 6. Substrate
- 7. Ashphalt
- 8. Timber batten (Treated)
- 9. Adhesive button

Note: In-situ laminate over fixings and seams/joints omitted for clarity. Please see drawing no: JFD for more detail.

REVISIONS

LETTER	REVISION	DATE	BY
--------	----------	------	----

BOWER EDLESTON
ARCHITECTS

SWEETBRIAR HALL, NANTWICH, CHESHIRE CW5 5RW
TELEPHONE: 01270 624129 FACSIMILE: 01270 627684
E M A I L : A D M I N @ B O W E R - E D L E S T O N . C O M
W E B S I T E : W W W . B O W E R - E D L E S T O N . C O M

PROJECT
NANTWICH CIVIC HALL ROOF REPAIR

TITLE
ROOF SECTIONS
SHEET 2 OF 2

SCALE	1:5@A1	DRAWN BY	CAT
DATE	JULY 2021	STAGE	
DRG.No	7119 04	REVISION	