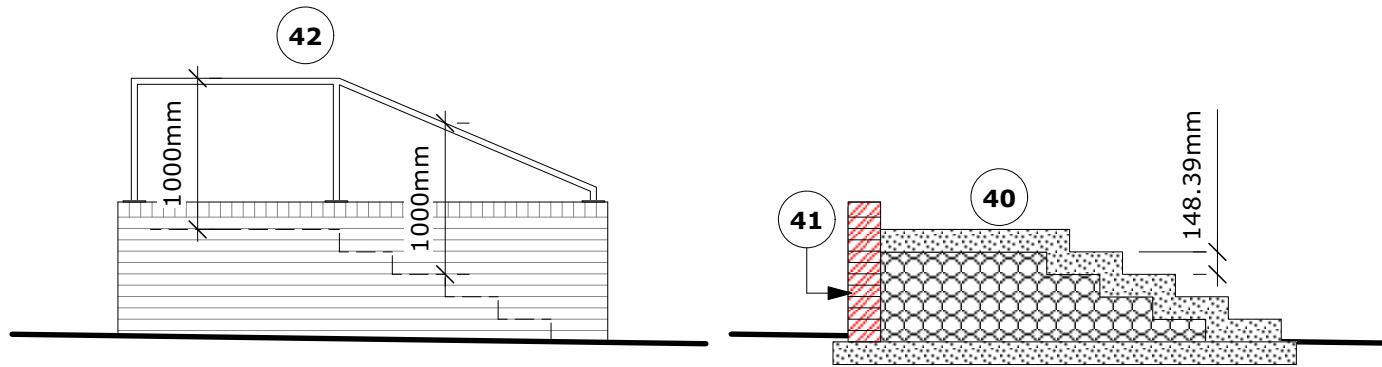
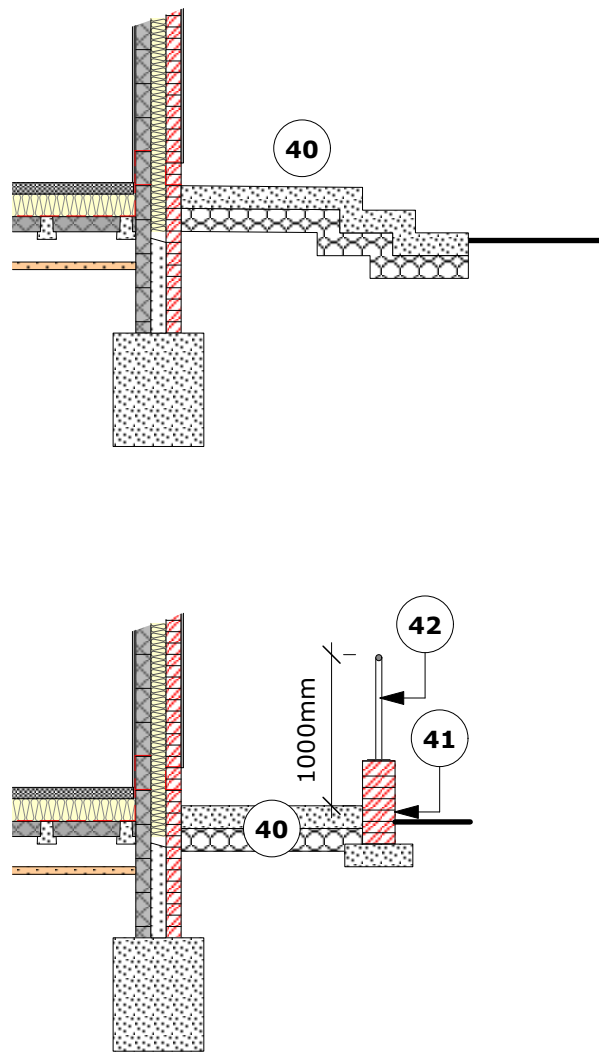
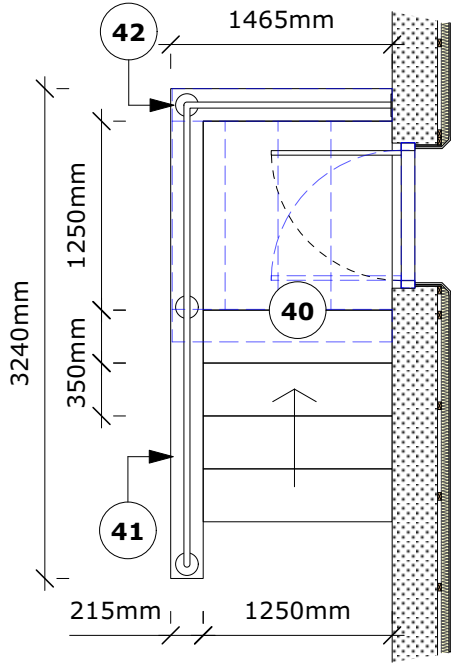


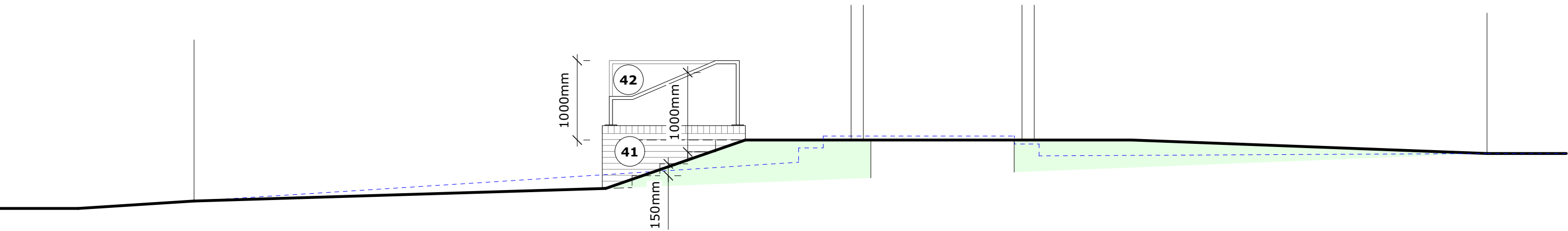
REAR AREA



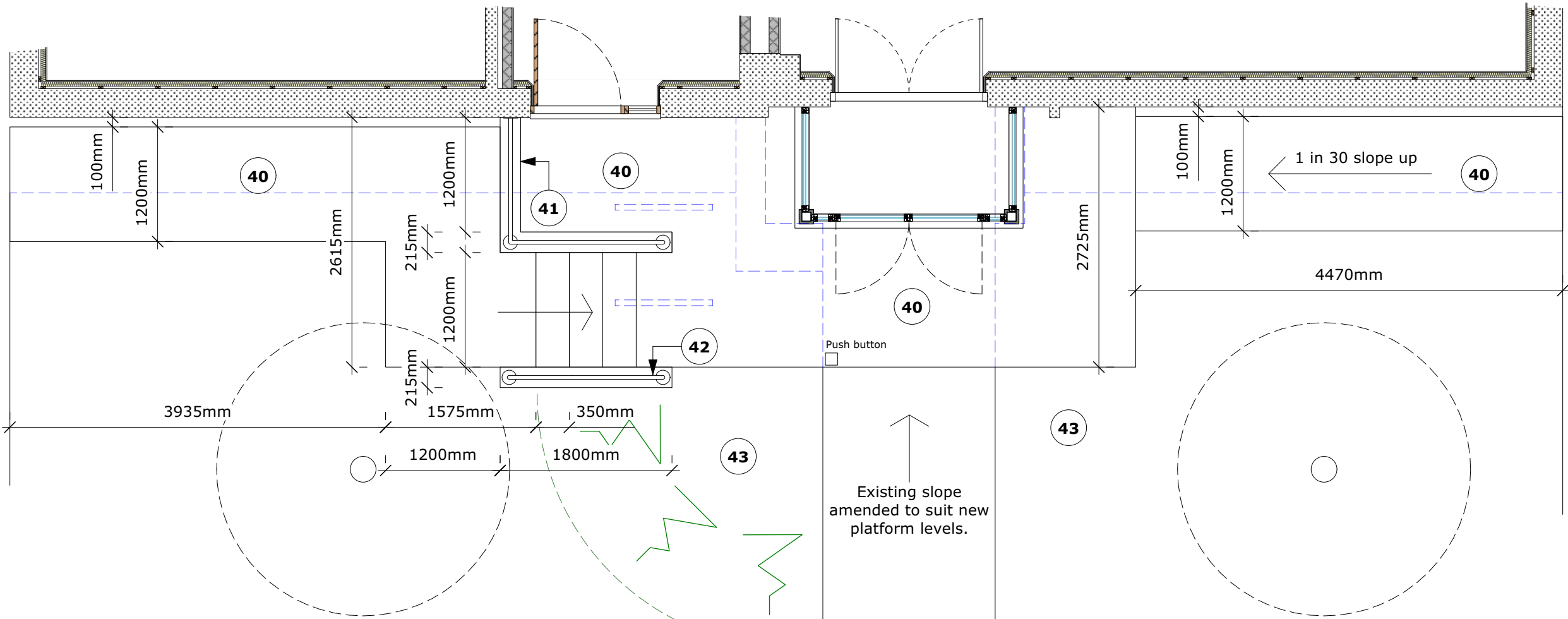
SIDE STEPS



- 40 Paths, steps and ramps comprise 150mm concrete reinforced with one layer of mesh on min. 150mm hardcore base.
- 41 215mm brickwalls with brick on edge coping set on 450x150mm deep concrete strip foundation.
- 42 40mm diam powder coated metal handrails with 150mm diam base plates fixed down to brickwall.
- 43 Existing ground levels to be adapted locally to suit the new paving arrangement.

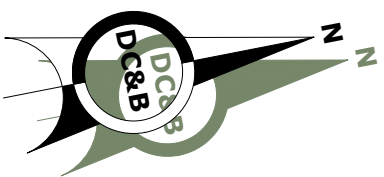


FRONT AREA



- GENERAL NOTES**
- Dimensions are in millimetres (unless stated otherwise) and are to block or stud faces.
 - Drawings are not to be scaled, use figured dimensions only.
 - Notify the Architect of any discrepancies within the drawing and contact for clarification before proceeding.
 - All proprietary items to be fitted strictly in accordance with manufacturers instructions.
 - All works to be carried out in accordance with latest related British Standards and relevant codes of practice.

Rev	Date	Revision Description
Project Title		
WIVENHOE TOWN COUNCIL OFFICE REMODEL & EXTENSION		Scale 1 : 50 @ A2
Project Ref.		3550
Drawing Title		TI-40
Date Drawn		JULY 2022
Drawn By		IJ
Checked By		



DUNCAN CLARK & BECKETT LTD

12A William's Walk, Colchester, Essex, CO1 1TS

T: 01206 578732

E: mail@dcbaarchitects.co.uk

W: www.dcbarchitects.co.uk

RIBA

CIAT

TENDER ISSUE

COPYRIGHT: This drawing and any design hereon is the copyright of Duncan Clark & Beckett Ltd and may not be reproduced without their written consent.