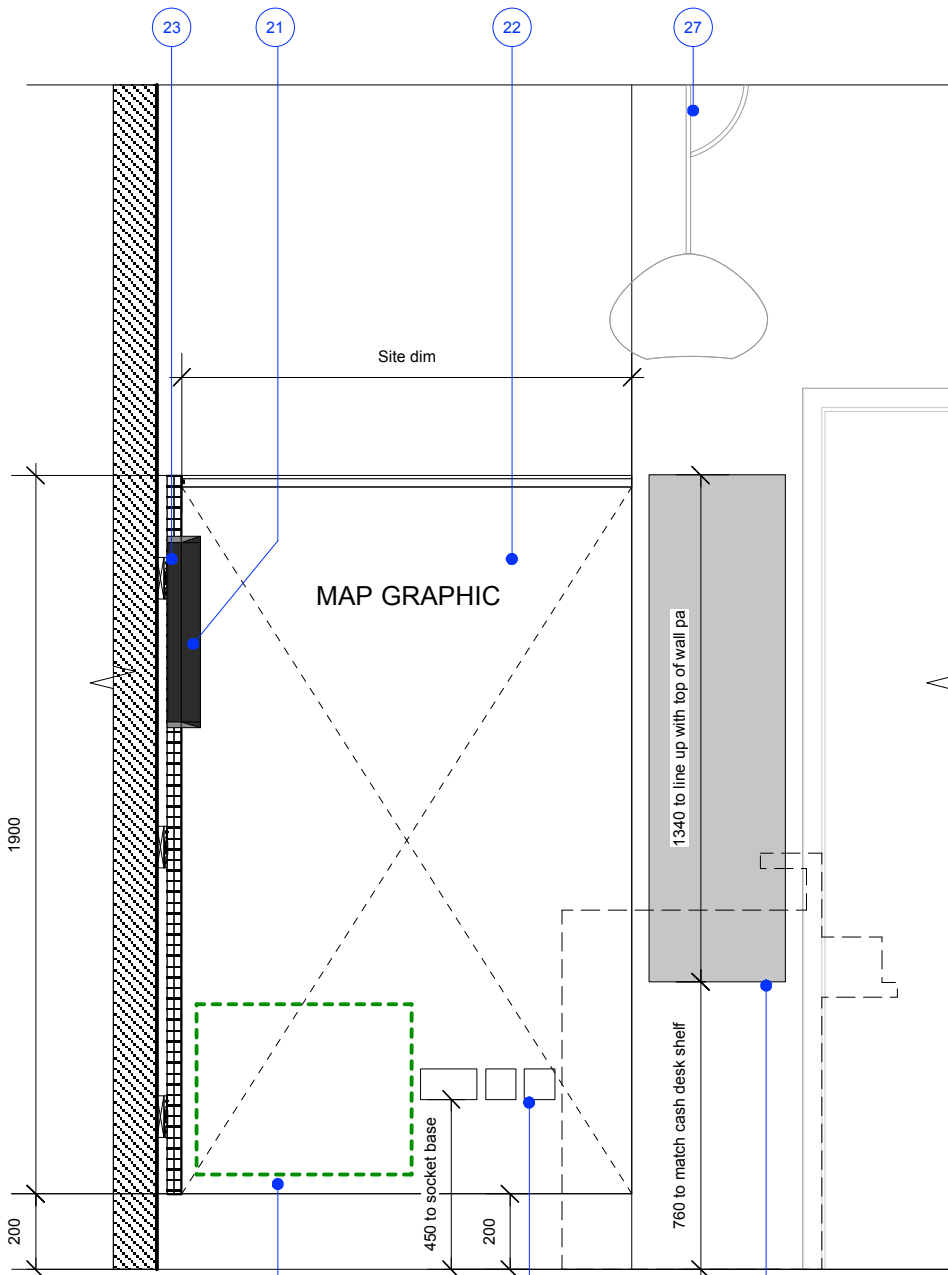


Back wall
Scale 1:20



Map wall
Scale 1:20

NOTES continued:

11/ Shown dotted, IWM free issue till equipment. IWM to provide list of equipment. Contractor to install and allow for adequate cable management to each item.

Hole under screen formed in top of unit to allow sockets and cables access to power source in cash desk. Cables to be neatly routed. Edges of hole to be sanded.

12/ Inset till drawer. Till drawer free issue provided by IWM. Contractor to provide recess to fit. Client supply till drawer to fit snugly into bespoke recess. Contractor to obtain equipment list from IWM and ensure power and data is accommodated.

13/ Matt finish black laminate to skirting, to match existing skirting. Contractor to specify.

14/ Upstand finished in laminate with solid oak frame. Ref: Abet Laminati Print S802 (871) SE1 Colorpact. Laminate to be fixed according to manufacturers instructions. <http://www.abetuk.com>

15/ Top of unit with solid oak frame and laminate finish inset flush with oak frame. Ref: Abet Laminati Print S806 (478) SE1 Colorpact. Laminate to be fixed according to manufacturers instructions. <http://www.abetuk.com>

16/ Indicative only of metal cable tray under unit with sockets and cables shown. Cable access shown. Contractor to advise on cabling and provide neat accessible cableruns throughout unit to all equipment.

17/ Shelf with 40mm solid oak frame and 15mm mdf with oak veneer surface, all inset flush with oak frame.

18/ Drawer comprised of 18mm ply front with sanded edges and oak veneer to face. Internally, unfinished mdf with matt lacquer to all faces. Drawer to be complete with good quality side mounted drawer runners with soft close action.

19/ Panel to be recessed into 40mm solid oak and securely adhered.

20/ Finger pull hole 20mm diameter with sanded edges.

21/ LCD screen fixed directly to peg board wall. Contractor to liaise with client on screen spec and detail, and to allow for power and stable wall mounted fixing. Position to be agreed on site with client.

22/ Map graphic treatment to panel wall panel by others. For panel wall detail, refer to construction detail in 273/201.0 and for fixing details to existing structure refer to 273/203.0 Fixing detail- method statement. Contractor to detail and cost.

23/ Pegboard wall panelling behind cash desk. Use setting out as shown, refer to 273/219.0.0 for detail and installation notes. For fixing details to existing structure refer to 273/203.0 Fixing detail- method statement. Contractor to detail and cost.

24/ Radiator position shown indicatively on wall. Fixed to wall panel. Contractor to allow for power and suitable fixings, and to establish radiator spec suitable for heating room 68. To ensure minimal visibility from shop floor. See 273/003.0 small power and flooring for radiator performance spec.

25/ Height of power, data and telephone points shown indicatively. Contractor to allow for these, and liaise with client for final positions.

26/ Display box fixed to front shelf. Dimensions as shown. Constructed in 15mm MDF with laminate. Laminate Ref: Abet Laminati Print (444) SE1 Colours. Laminate to be fixed according to manufacturers instructions. Contractor to ensure laminate joins concealed by solid oak edging. <http://www.abetuk.com>

27/ Feature pendant lights. See 273/004.0 RCP and lighting for spec and position

28/ Pull out tissue wrap shelf, slider underneath. Suggested supplier Hafele. Finger groove detail to top of sliding shelf. Contractor to specify slider detail and specification, subject to approval. www.hafele.co.uk

29/ Magnetic panel fixed to wall. Constructed in ply with magnetic laminate wrap. Contractor to advise.

NOTES:

GENERAL NOTES:

Refer to GAs for positions

Refer to 273/302.0 and 273/302.1

Listed Building. Great care must be taken while checking existing fixing points and establishing new ones. Refer to 273/001.0 Demolitions and existing for instructions on strip-out and 273/203.0 Fixing details - method statement for fixing detail options into existing structure. Area to be surveyed and all dimensions checked prior to manufacture. Locations to be checked for strength and stability prior to manufacture.

Ensure all power requirement and equipment is understood. CWM can provide an equipment list and this must be checked against the details provided to ensure it all fits/works.

Power routes are indicative here and to be developed by the contractor. Ensure ease of use for the client.

Power and data points are shown on the small power layouts. The contractor is to extend these as necessary and required.

Panic alarms are housed within the cash desks as indicated on the small power drawings. Final position for panic buttons to be established with designer and client. All cabling to be neatly concealed.

Where oak is noted, clear matt lacquer so as to be as natural in appearance as possible. Suggested ref: Envirograf natural lacquer class 0. Contractor to provide samples of all finishes stated for approval prior to manufacture.

Contractor to ensure strength and stability of units. Internal SW supports subject to contractor's details.

MDF generally shown as 18 or 15mm and 6-10mm where required. Contractor to confirm all thicknesses on setting out drawings.

1/ Indicates existing structure

2/ 40 x 40mm solid oak strut with clear matt lacquer. All oak struts to be jointe e.g. mortise and tenon to be agreed with the contractor.

3/ Side panel to unit with both faces laminated in solid core laminate Ref: Abet Laminati Print S802 (871) SE1 Colorpact. Laminate to be fixed according to manufacturers instructions. <http://www.abetuk.com>
Note if inside face is not visible a less expensive laminate may be used to balance, but use a similar colour way.

4/ Cupboard doors to be 18mm ply with oak veneer to both faces. Exposed ply edges to be sanded. Doors fitted with 1x pair good quality stainless steel cabinet hinges to each leaf. Contractor to advise

5/ Internal shelf on adjustable strip by Peerless. Shelf with laminate finish to 18mm ply and ply edges exposed and sanded. Ref: Abet Laminati Print S802 (871) SE1 Colorpact. Laminate to be fixed according to manufacturers instructions. <http://www.abetuk.com>

6/ Fixed shelf. Shelf 18mm ply with sanded edges and laminat to top and bottom faces. All finished in laminate Ref: Abet Laminati Print S802 (871) SE1 Colorpact. Laminate to be fixed according to manufacturers instructions. <http://www.abetuk.com>

7/ Cap in work top to cover power cable hole, allowing access for cables. Refer to details.

8/ Lift out panels for access to power sockets in base of unit. Allow for adequate cable access to unit and all equipment. Final size of lift out panels to be established. Panels in finish to match interior of unit.

9/ Peg board with laminate surface finish. Contractor to advise on peg board and peg board shop fitting euro hooks. This to be discussed with designer and IWM. Ref: Abet Laminati Print S802 (871) SE1 Colorpact. Laminate to be fixed according to manufacturers instructions. <http://www.abetuk.com> Void behind peg board sufficient for euro hooks to hook in with ease.

10/ Indicative of LED lighting strip. All cabling to be neatly concealed and power to be supplied via voids within cash desk unit. LED strip to be specified. Contractor may suggest for approval. Switching to be local to desk area.

DRINKALL DEAN

Ground Floor 32 St Oswalds Place London SE11 5JE
PHONE: +44 (0) 207 735 2731
info@drinkalldean.co.uk www.drinkalldean.co.uk

<p>GENERAL NOTES:</p> <p>DO NOT SCALE FROM THIS DRAWING. REFER TO WRITTEN DIMENSIONS ONLY. ALL DIMENSIONS AND LEVELS TO BE CHECKED ON SITE BY THE CONTRACTOR PRIOR TO COMMENCEMENT OF WORKS. ANY DISCREPANCIES TO BE REPORTED TO THE DESIGNER IMMEDIATELY AND PRIOR TO COMMENCEMENT OF WORKS.</p> <p>ALL DRAWINGS TO BE READ IN CONJUNCTION WITH WRITTEN SPECIFICATIONS / ASSOCIATED DOCUMENTATION SUPPLIED BY THE DESIGNER.</p> <p>ALL DRAWINGS TO BE READ IN CONJUNCTION WITH CONSULTANTS' DOCUMENTATION AND DRAWINGS. ANY DISCREPANCIES BETWEEN CONSULTANTS' DRAWINGS TO BE REPORTED TO THE DESIGNER PRIOR TO COMMENCEMENT OF WORKS.</p> <p>THIS DRAWING SHOWS THE DESIGN INTENT ONLY. THE CONTRACTOR SHALL ADVISE ON ALL DETAILS AND ENSURE STRENGTH AND STABILITY IN ALL CONSTRUCTION.</p>	<p>THE CONTRACTOR TO PROVIDE SETTING OUT AND ROD DRAWINGS FOR APPROVAL PRIOR TO CONSTRUCTION.</p> <p>ALL SERVICES TO COMPLY WITH LOCAL AUTHORITY, BUILDING CONTROL AND ENVIRONMENTAL HEALTH REQUIREMENTS AND TO SERVICES ENGINEERS' DETAILS.</p> <p>ALL STRUCTURE TO LOCAL AUTHORITY AND BUILDING CONTROL REQUIREMENTS AND TO STRUCTURAL ENGINEERS' DETAILS AND CALCULATIONS.</p> <p>DO NOT SCALE THIS DRAWING. CHECK ALL DIMENSIONS ON SITE.</p> <p>THE CONTRACTOR SHALL COMPLY WITH:</p> <p>CDM REGULATIONS 2007</p>	<p>FIRE PRECAUTIONS:</p> <p>CODE OF PRACTICE FOR THE PREVENTION OF FIRES ON CONSTRUCTION SITES AND BUILDINGS UNDERGOING REFURBISHMENT</p> <p>ALL CONSTRUCTION AND MATERIALS TO CONFORM TO CURRENT BUILDING AND FIRE REGULATIONS.</p> <p>SITE WASTE MANAGEMENT:</p> <p>THE CONTRACTOR SHALL MANAGE ALL WASTE MATERIALS AND RE-USE / RECYCLE AS MUCH AS POSSIBLE TO MINIMISE WASTE.</p>	<p>RISK ASSESSMENT:</p> <p>THE CONTRACTOR MUST ENSURE THAT THE SITE IS A HAZARD FREE ENVIRONMENT AT ALL TIMES.</p> <p>STANDARD SAFETY CLOTHING AND EQUIPMENT MUST BE WORN AT ALL TIMES.</p> <p>THE CONTRACTOR MUST EMPHASISE POTENTIAL SITE RISKS AND HAZARD TO ALL OPERATIVES ESPECIALLY DURING DEMOLITIONS AND STRUCTURAL WORKS.</p> <p>IF IN DOUBT - ASK THE DESIGNER</p>	<p>DRAWING STATUS: FOR TENDER</p>	CLIENT: CHURCHILL WAR ROOMS	DRAWING TITLE: Room 68 Cash Desk - 3
				REVISIONS: --	PROJECT: CWR Shop	SCALE: As shown PAPER SIZE: A3
					PROJECT ADDRESS: King Charles Street London SW1A 2AQ	DRAWN BY: KA DATE: Sept 2015
						PROJECT NUMBER: 273 DRAWING NUMBER: 273/302.2 REVISION: -