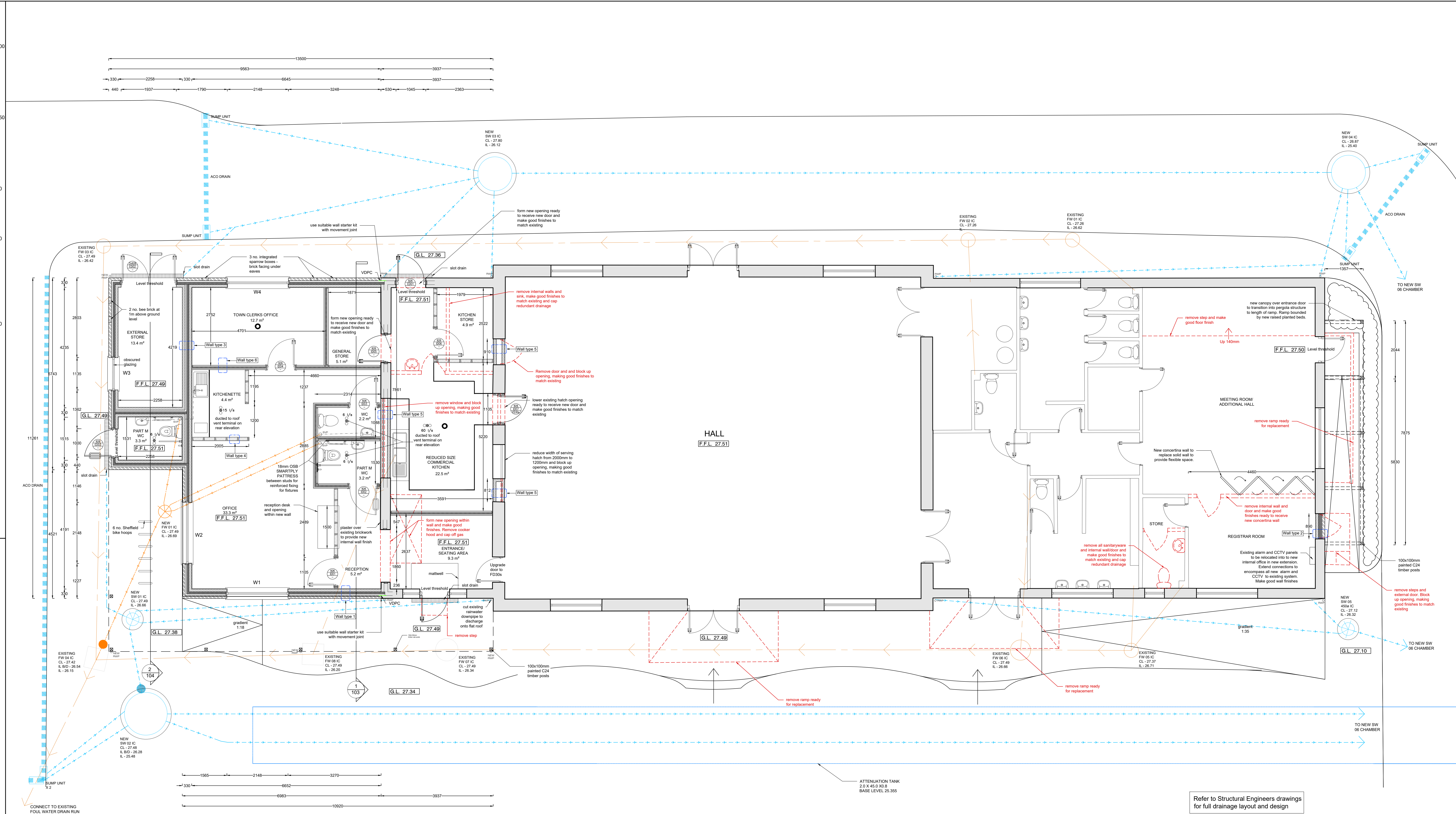
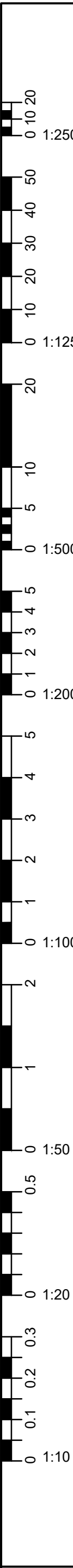


REPRODUCING THESE DRAWINGS BY PRINTING OR COPYING MAY LEAD TO ERRORS. PLEASE REFER TO SCALE BAR DO NOT SCALE OFF THESE DRAWINGS FOR CONSTRUCTION PURPOSES. IF ANY DISCREPANCIES ARE FOUND, PLEASE CONTACT WESTERN DESIGN ARCHITECTS IMMEDIATELY.



DESIGNERS RISK ASSESSMENT - HEALTH AND SAFETY THE CONSTRUCTION (DESIGN AND MANAGEMENT) REGULATIONS 2015

A design and risk assessment Drawing CD001 should form part of our drawing package. If you have not received this from us by post, email or by collection please contact us for a copy before moving forward with the project.



Detailed Ground Floor Plan 1:50@A0

EXTERNAL WALLS

- Wall type 1 (New extension - WEST)
 - 100mm fair faced brickwork external leaf to match existing
 - 130mm cavity with Bonns Kingspan Kooltherm 108 (PIR) insulation
 - 100mm medium dense blockwork inner leaf
 - 12.5mm plasterboard on dabs with skim finish

INTERNAL WALLS

- Wall type 2 (Refurb - EAST)
 - 100mm fair faced brickwork external leaf to match existing
 - 120mm cavity with Bonns Kingspan Kooltherm 108 insulation (Polypropylene fleece (grey facing) to face outward)
 - 100mm medium dense blockwork inner leaf
 - 12.5mm plasterboard on dabs with skim finish
- Wall type 3 (Internal structure)
 - 100mm medium dense fair faced blockwork leaf - Paint grade (external store side)
 - 30mm cavity with Bonns Kingspan Kooltherm 108 (PIR) insulation
 - 100mm medium dense blockwork inner leaf
 - 12.5mm plasterboard on dabs with skim finish
- Wall type 4 (Internal abut)
 - 12.5mm plasterboard with skim finish
 - 100mm studwork with 100mm Rockwool Soundblock between studs
 - 12.5mm plasterboard with skim finish
- Wall type 5 (Internal party)
 - 12.5mm plasterboard with skim finish
 - 100mm medium dense blockwork leaf
 - Clear cavity (varies)
 - 100mm medium dense blockwork leaf
 - 12.5mm plasterboard with skim finish
- Wall type 6 (Acoustic partition)
 - 12.5mm plasterboard & skim finish
 - 20mm CELLCTA HCVPT28 composite acoustic wallboard
 - 20mm metal resilient bar fixed to timber stud wall at 500mm (max) horizontal centres
 - 15mm CELESTIA FIBREX Micro15 non-lich sound absorbing quilt filled in void between resilient bars
 - 20mm acoustic mineral insulation filled between studs - 60kg/m3 (Rockwool RW2 or similar)
 - 60 x 20mm CLS studwork at 600mm (max) centres
 - 12.5mm plasterboard & skim finish

new wall between entrance and commercial kitchen to use FineLine plasterboard

Refer to Structural Engineers drawings for full drainage layout and design

REV	REVISION DETAILS	BY	CHKD	DATE



Western Design Architects 12 The Granary, Hinton Business Park, Tarnet Hinton, Dorset, DT11 8LP T: 01208 800075 E: info@westerndesign.co.uk

CLIENT: Chickereil Town Council

PROJECT: Willowbed Hall, Chickereil

DRAWING TITLE: Detailed Ground Floor Plan

DRAWN BY: RS	DESIGNED BY: MW	DATE: 28.04.2025
--------------	-----------------	------------------

SCALE: 1:50@A0	DWG NO: 2425561
----------------	-----------------

101 BUILDING REGULATIONS THIS DRAWING IS COPYRIGHT © Western Design Ltd 2025