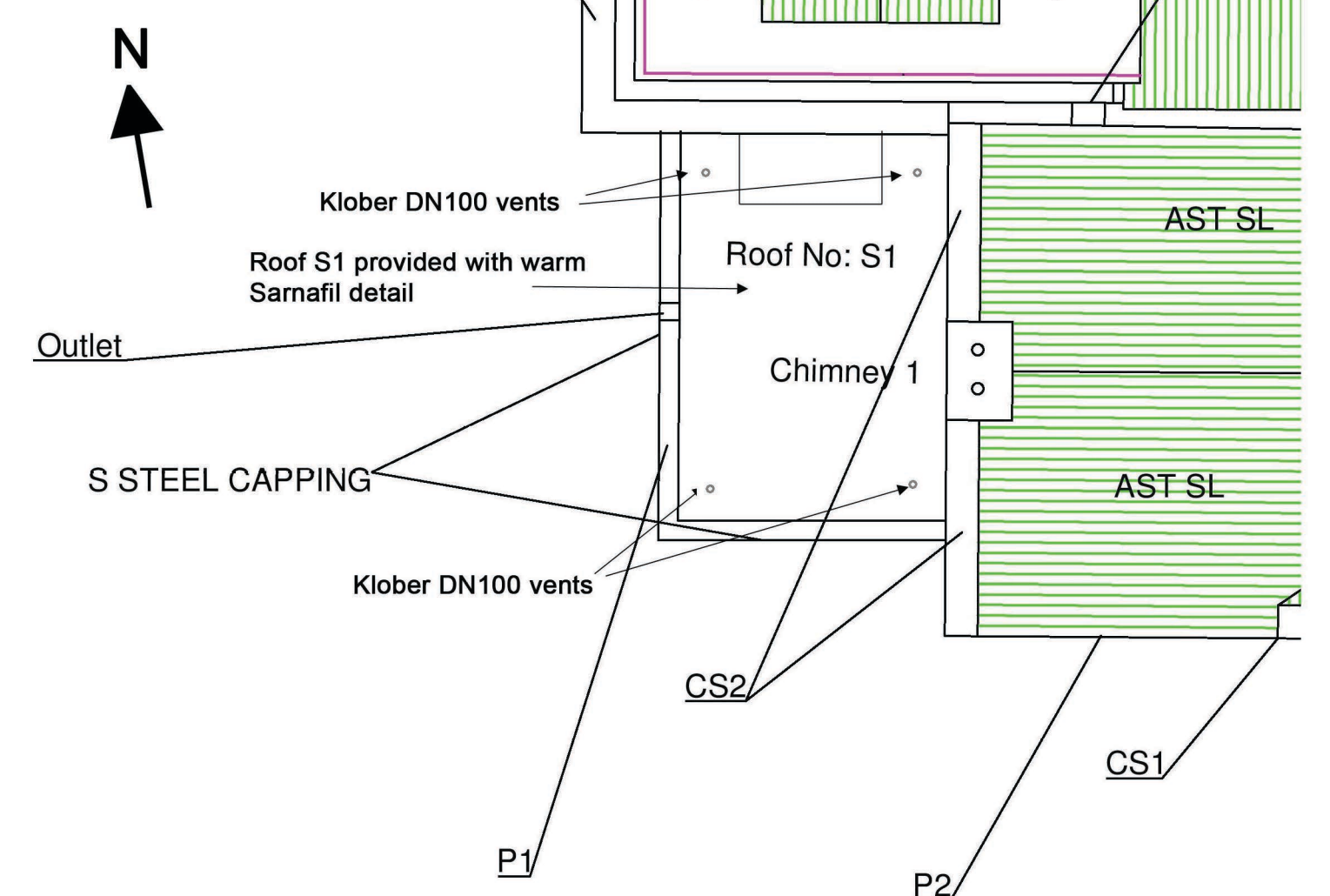
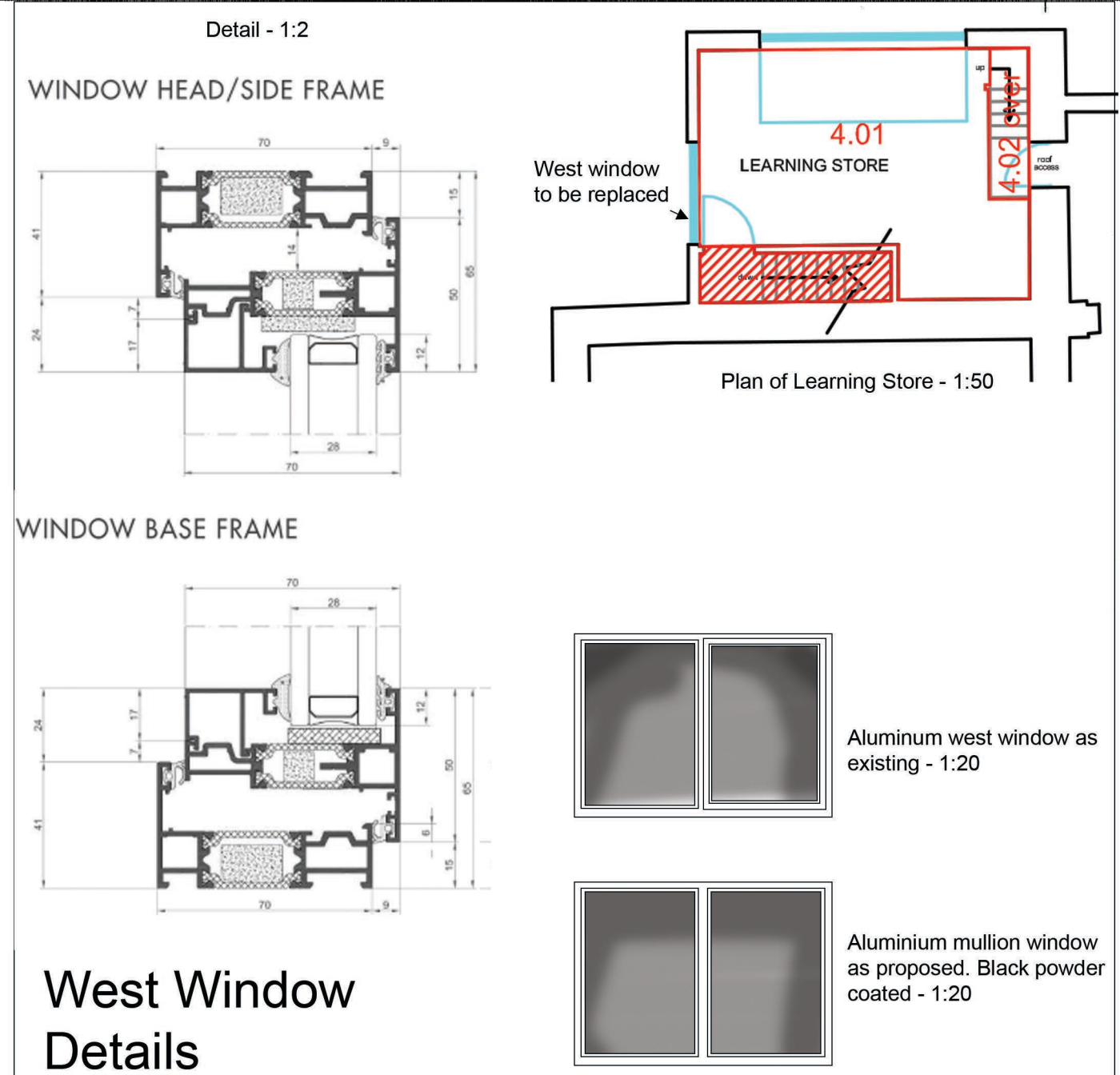


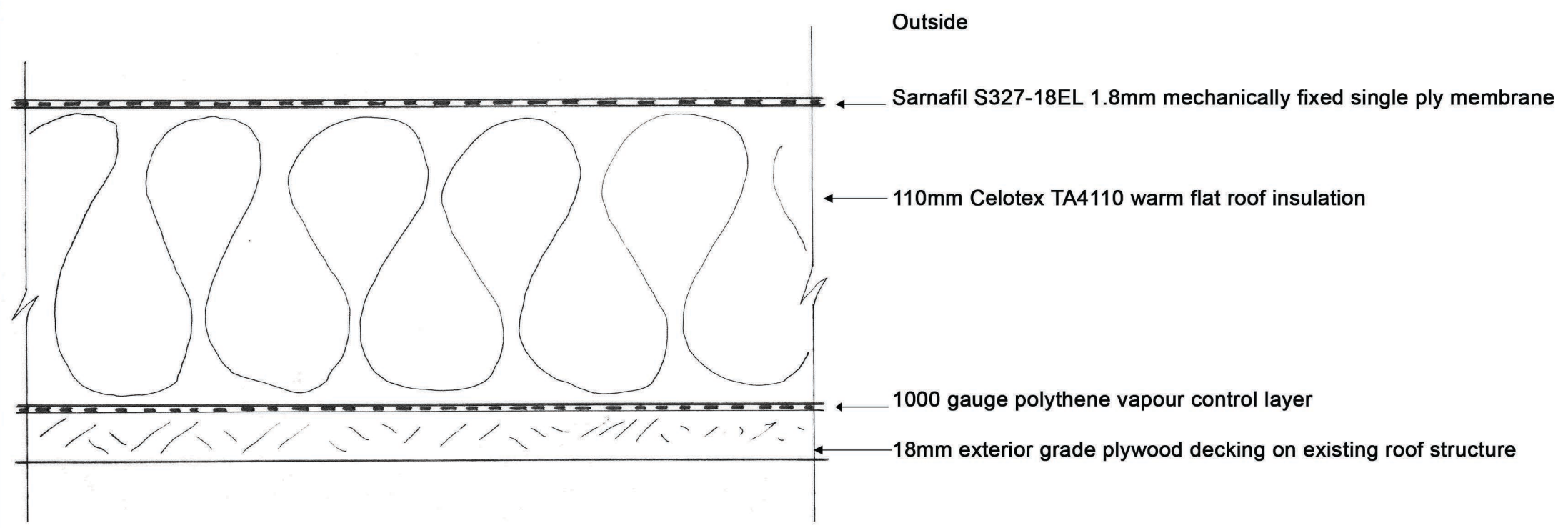
Contractors must check all dimensions on site.
Only figured dimensions are to be worked from.
Discrepancies are to be reported immediately.



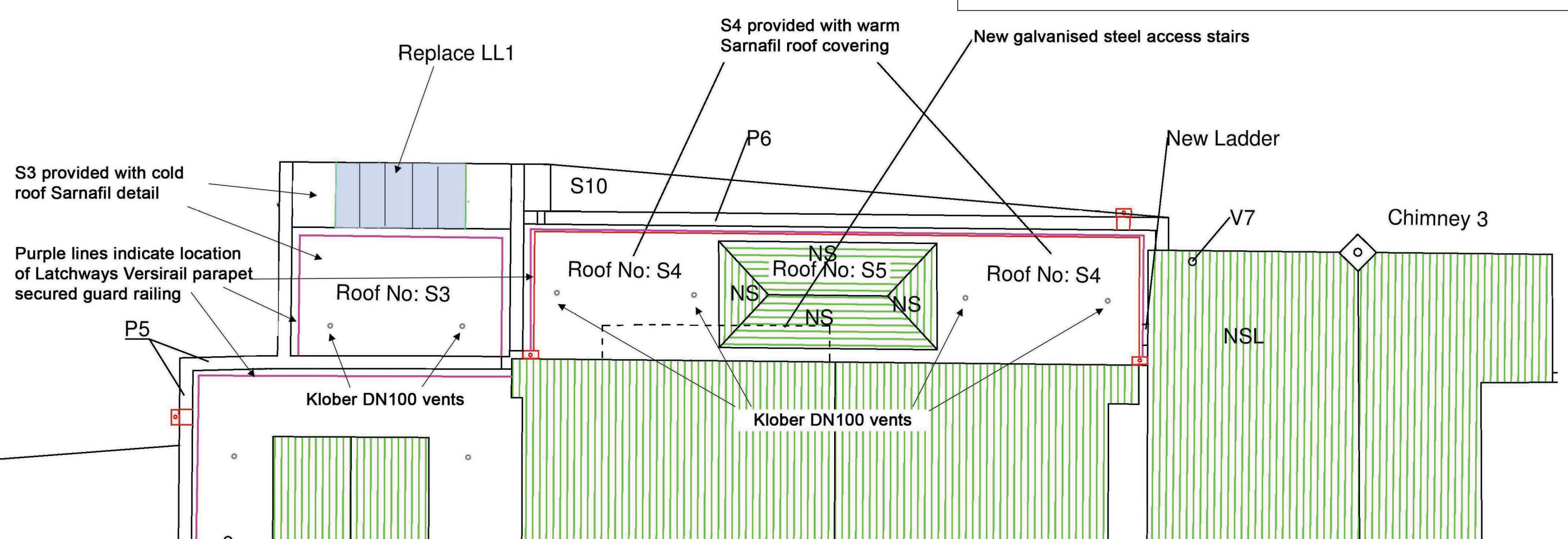
Partial Roof Plan Showing Flat Roof S1 @ 1:100



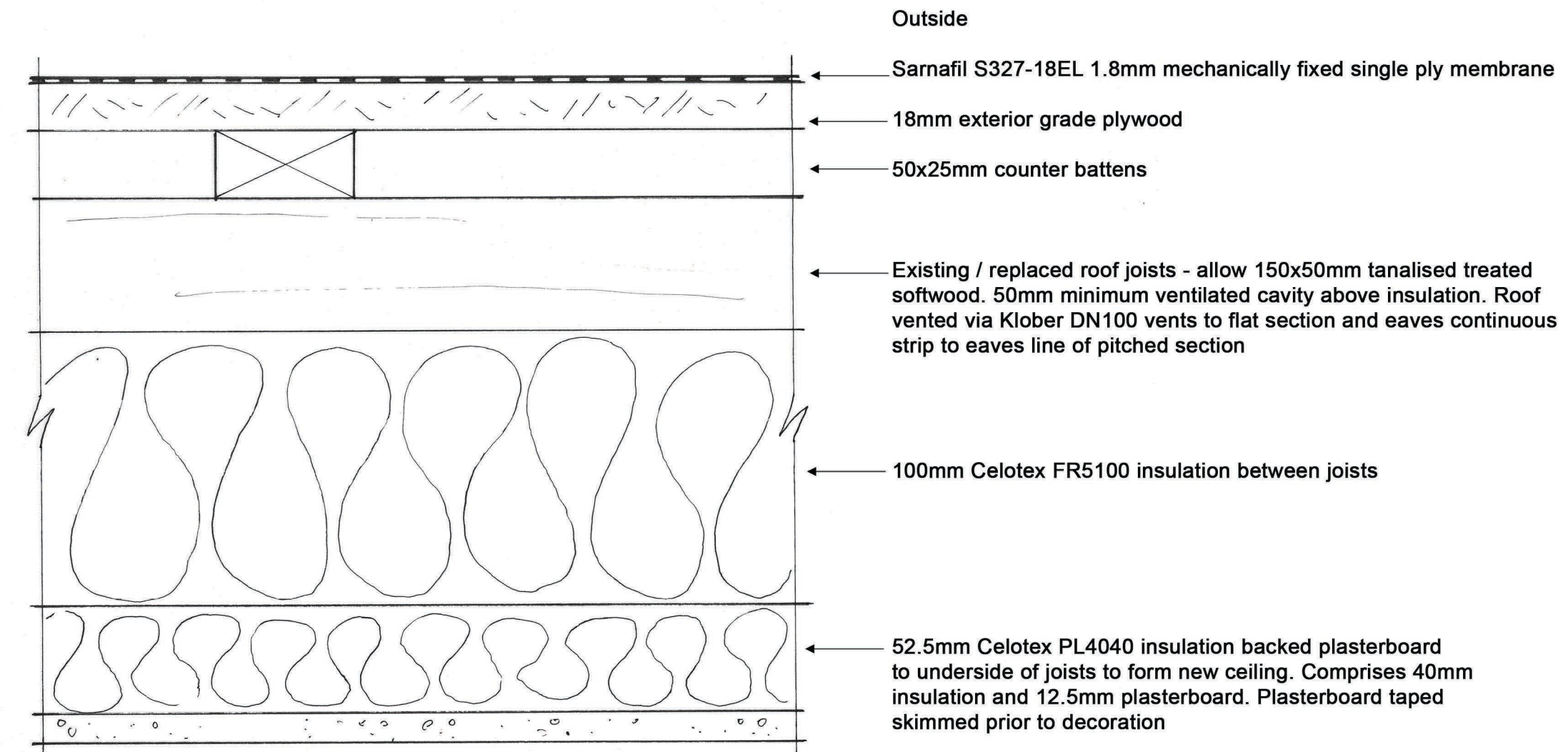
West Window Details



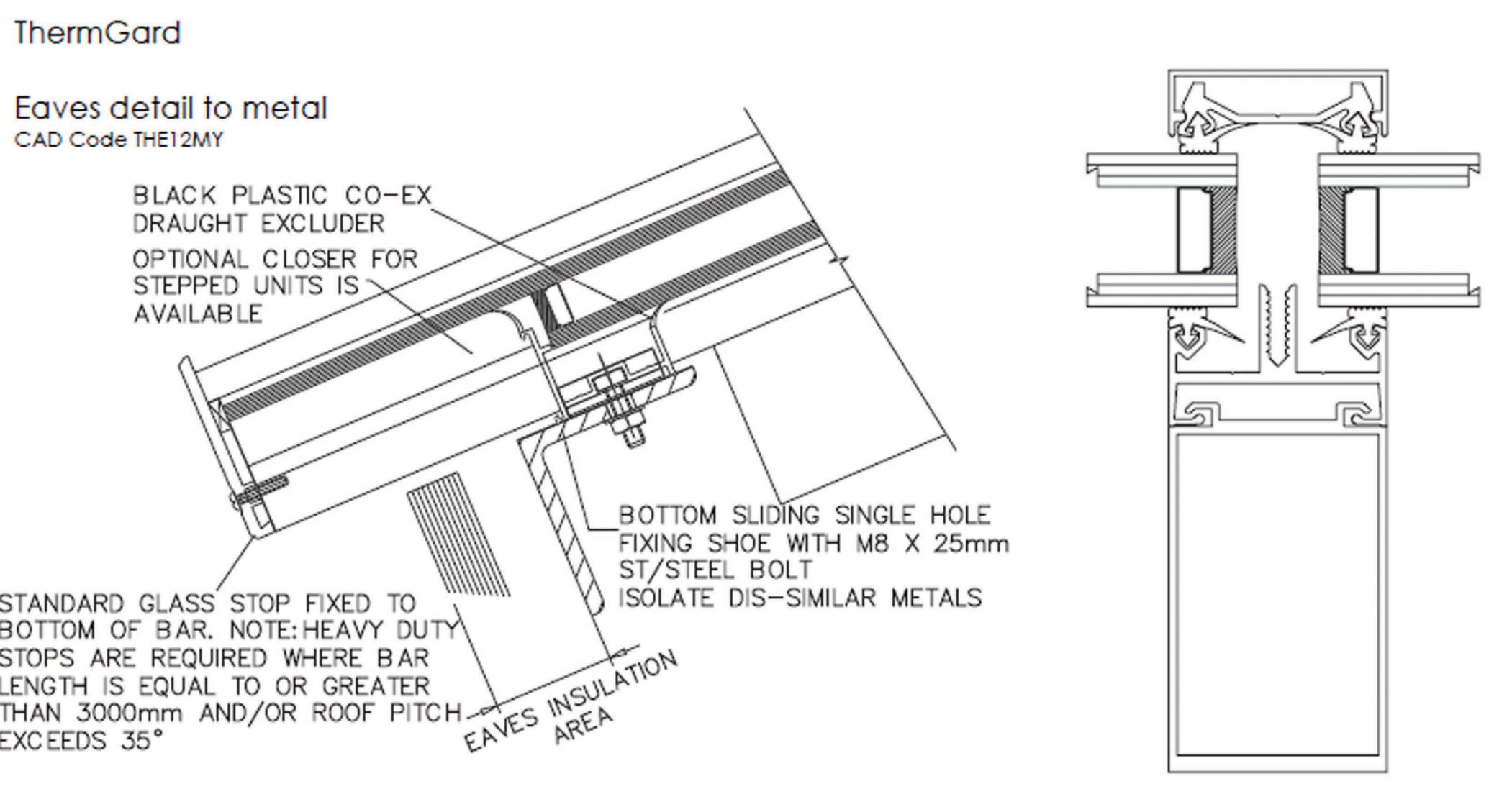
Sarnafil Warm Roof Detail - Applies to S1, S2, S4 and S7 @ 1:2



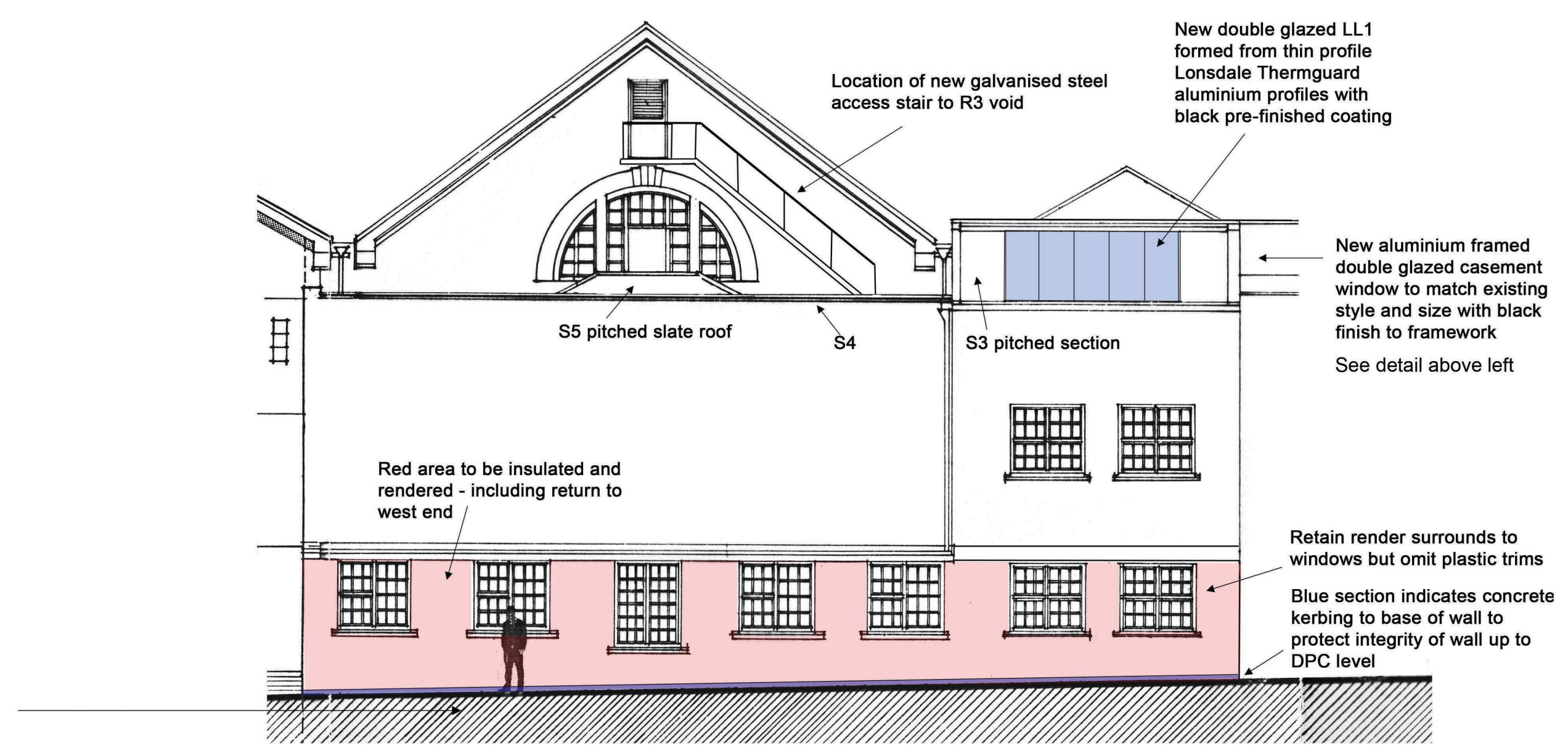
Partial Roof Plan Showing Roofs S3, S4 and S5 @ 1:100



Sarnafil Cold Roof Detail - Applies to S3 on Pitch and Flat @ 1:2



ThermGard Details for LL1 Window @ 1:1



Partial Northern Elevation of Museum Focusing on Western End @ 1:100

Date	Revision
B 21/10/21	LL1 window detail added
B 01/10/21	2021 detail
A 29/01/14	Window, kerbing and stair alts

SCOTT & CO

Chartered Surveyors and Historic Building Consultants,
3, Lemon Villas,
Truro,
Cornwall,
TR1 2NX.
Tel: 01872 263939
Fax: 01872 262299

Client
The Royal Institution of Cornwall

Project
The Royal Cornwall Museum

Drawing Title
Partial North Elevation
Partial Plans Showing S1, S3, S4 and S5
Sarnafil Warm / Cold Roof Details

Scale
1:100 and 1:2

Drg. No.
S: 714-23C

File No.
7377

Designed by
CGH

Drawn by
CGH

Date
17/12/13

© This drawing is the Copyright of Scott & Company.