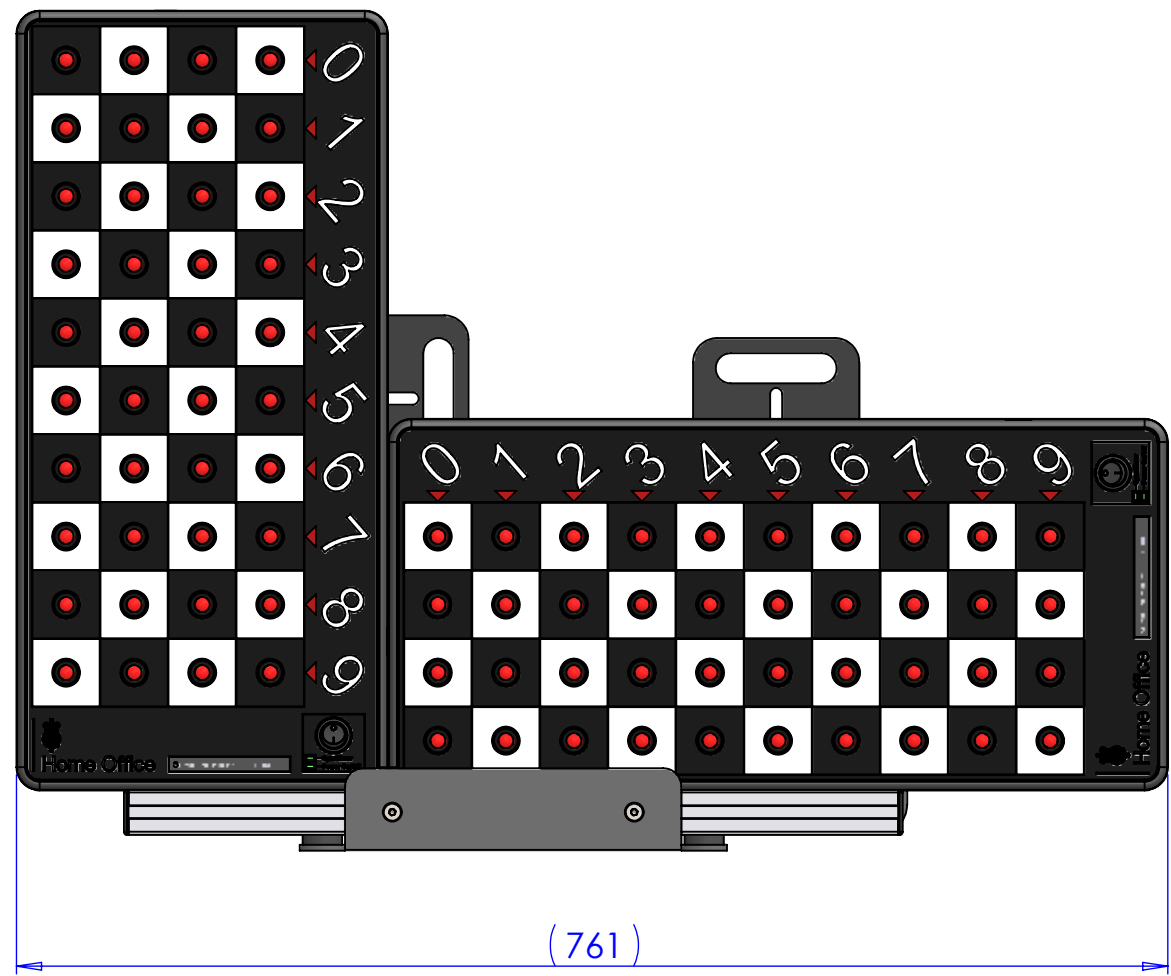
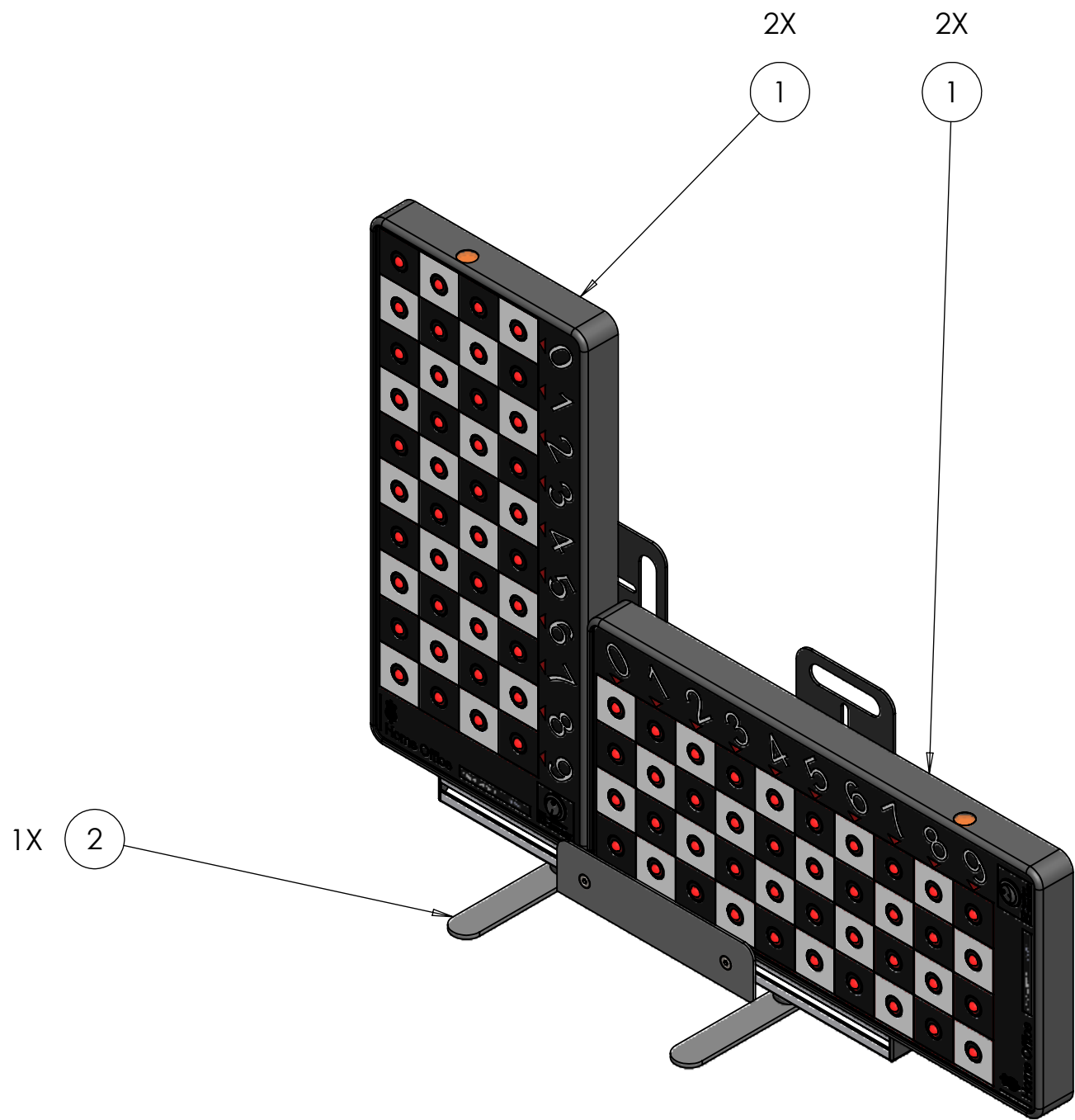
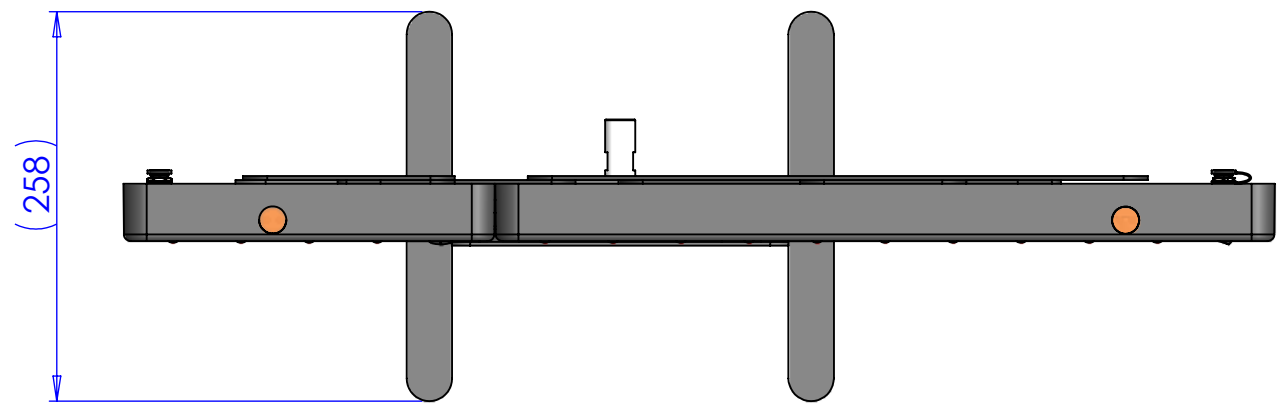
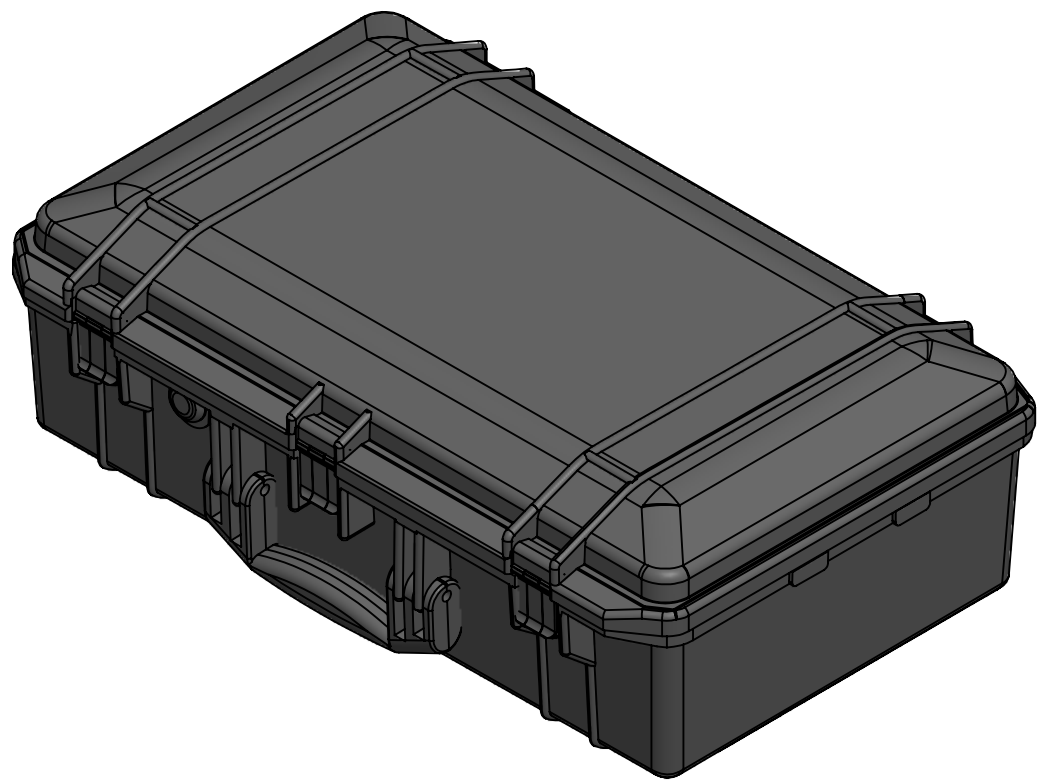


ITEM NO.	PART NUMBER	DESCRIPTION	QTY.	MANUF.	MANUF. REF
1	M100970	FIT UNIT ASSEMBLY	2		
2	M100972	FIT STAND ASSEMBLY	1		
3	M101039	BATTERY CHARGER ASSEMBLY	1		
4	M101046	TOP LAYER INSERT ASSEMBLY	1		
5	M101056	FIT USER MANUAL	1		
6	M101079	FOAM INSERT BASE LAYER	1		
7	M101081	FOAM INSERT LID	1		
8	M101082	MIDDLE LAYER INSERT ASSEMBLY	1		
9	B100354	POWER CORD UK PLUG TO C7	1	RS PRO	0452669
10	B100360	PELI CASE 1555 ASSEMBLY	1	PELI	1555

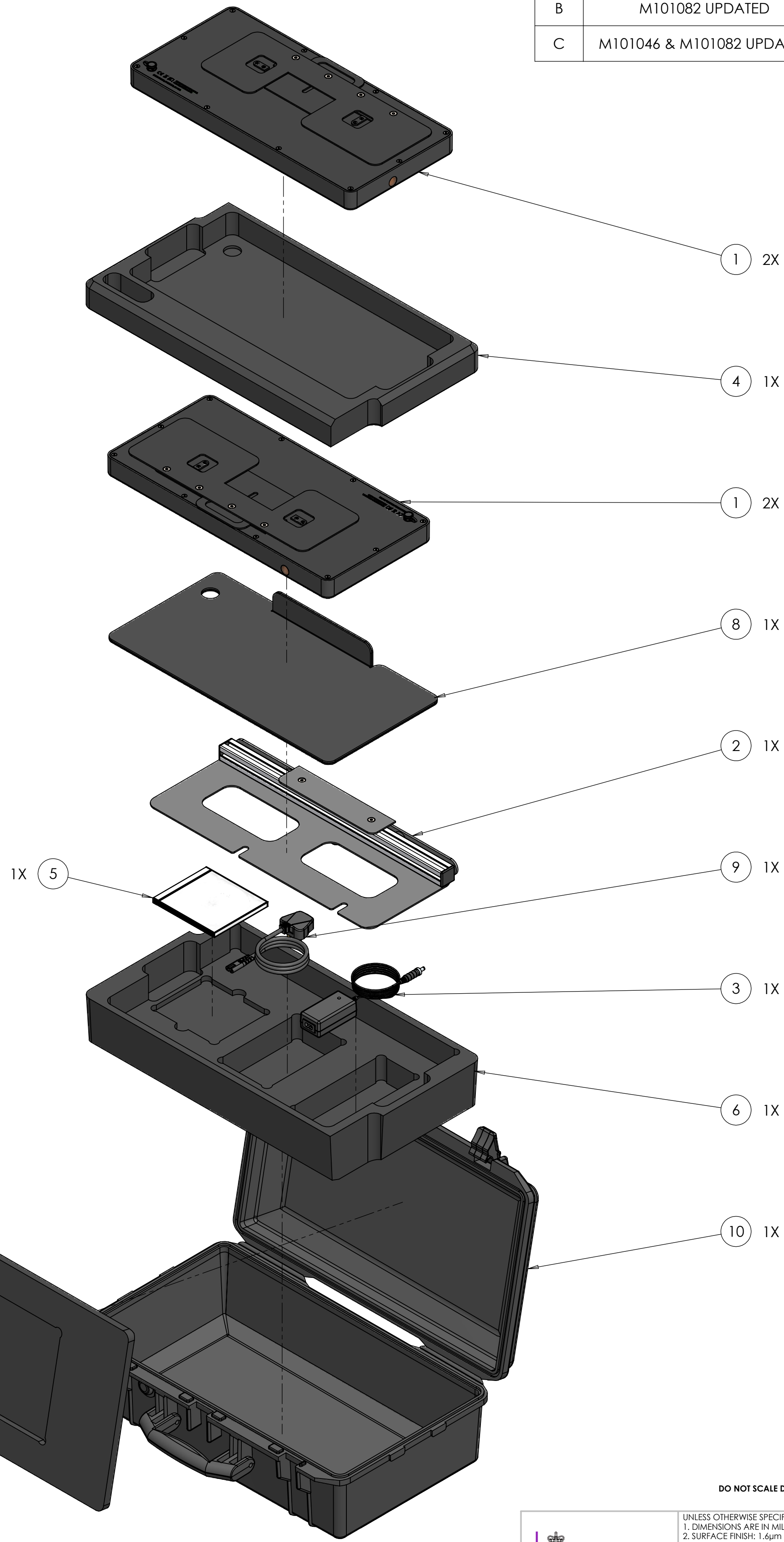
REV.	DESCRIPTION	DATE	STATUS	APPROVED
A	NEW ISSUE	03/10/2016	ISSUED	ML
B	M101082 UPDATED	17/10/2016	ISSUED	ML
C	M101046 & M101082 UPDATED	31/10/2016	ISSUED	ML



DEPLOYED SET-UP



PACKED/TRAVEL SET-UP



PACKED/TRAVEL SET-UP - EXPLODED VIEW

NOTES:
ITEM NO. 6 (M101079) & 7 (M101081) TO BE ADHESIVELY BONDED INTO ITEM ITEM NO. 10 (B100360) USING RS PRO SPRAY ADHESIVE (RS PART NUMBER: 388-8601)

Centre for Applied Science and Technology

Woodcock Hill
Savidge
St Albans
AL4 9HQ

Tel: 01727-816377
Email: cas@cas.gov.uk

UNLESS OTHERWISE SPECIFIED:
1. DIMENSIONS ARE IN MILLIMETRES
2. SURFACE FINISH: 1.6µm
3. GENERAL TOLERANCES: ±0.10
4. HOLES: ±0.10
5. ANGLES: ±0.25°
6. DE-BURR ALL HOLES & SHARP EDGES

NAME	DATE
DRAWN	MS 19/08/2016
MODELLED	MS 19/08/2016
CHECKED	RB 30/08/2016

PROJECT NAME: FIT
PROJECT CODE: 71
ASSEMBLY CODE: 194013

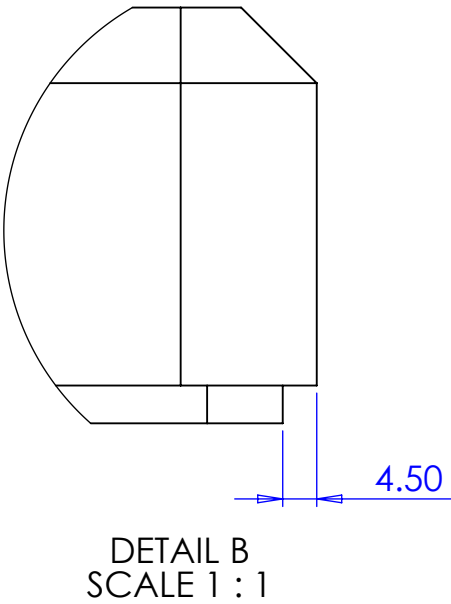
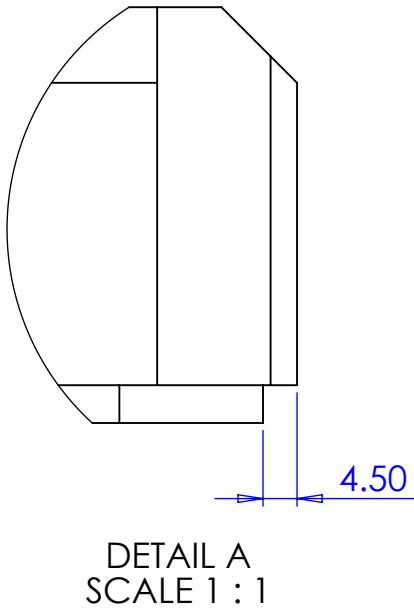
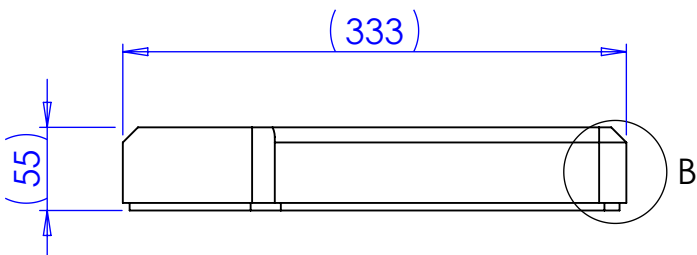
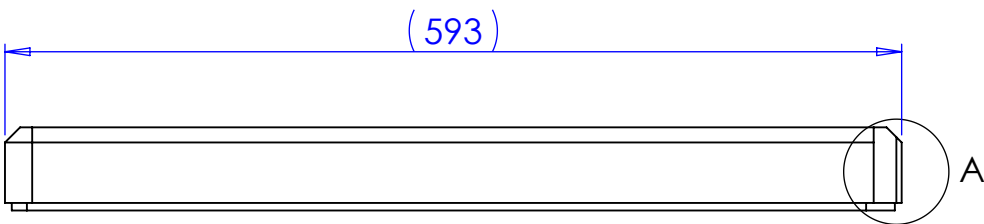
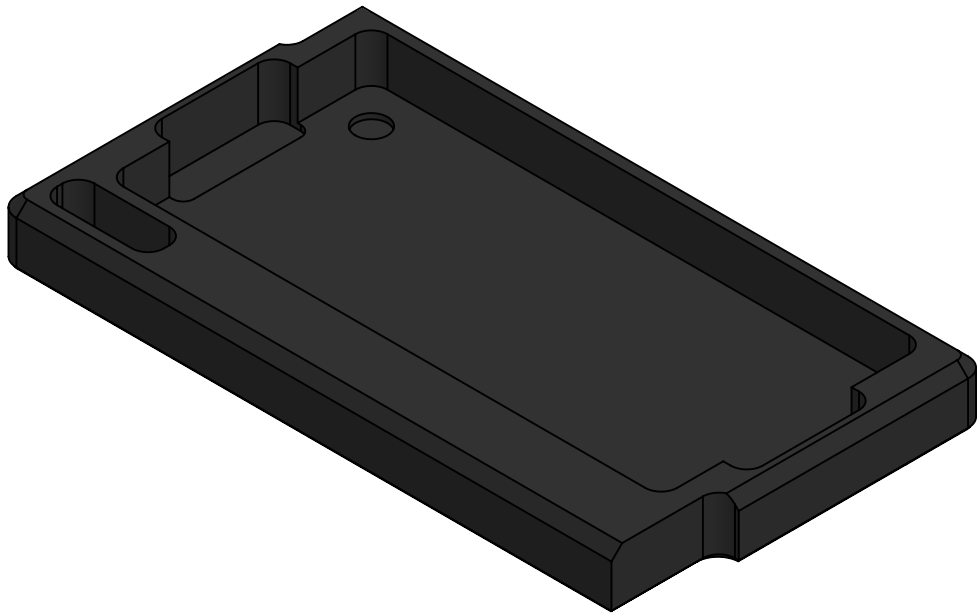
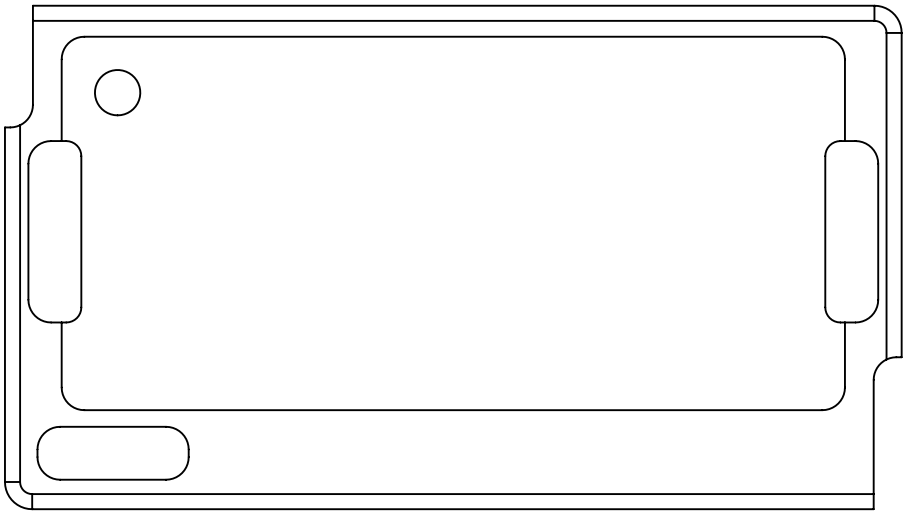
MATERIAL: SEE BOM
FINISH: NATURAL
SECURITY: OFFICIAL
WEIGHT: 17067.02 g
VOLUME: mm³

TITLE: FIT GENERAL ASSEMBLY
DWG NO: M101040
JOB NUMBER: D13/16

USED ON: TOP
STEP FILE NAME: STEP-M101040-C
SIL FILE NAME: STL-M101040-C
DXF FILE NAME: DXF-M101040-C
SHEET 1 OF 1
A1

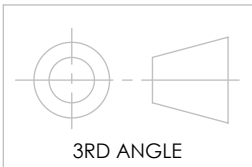
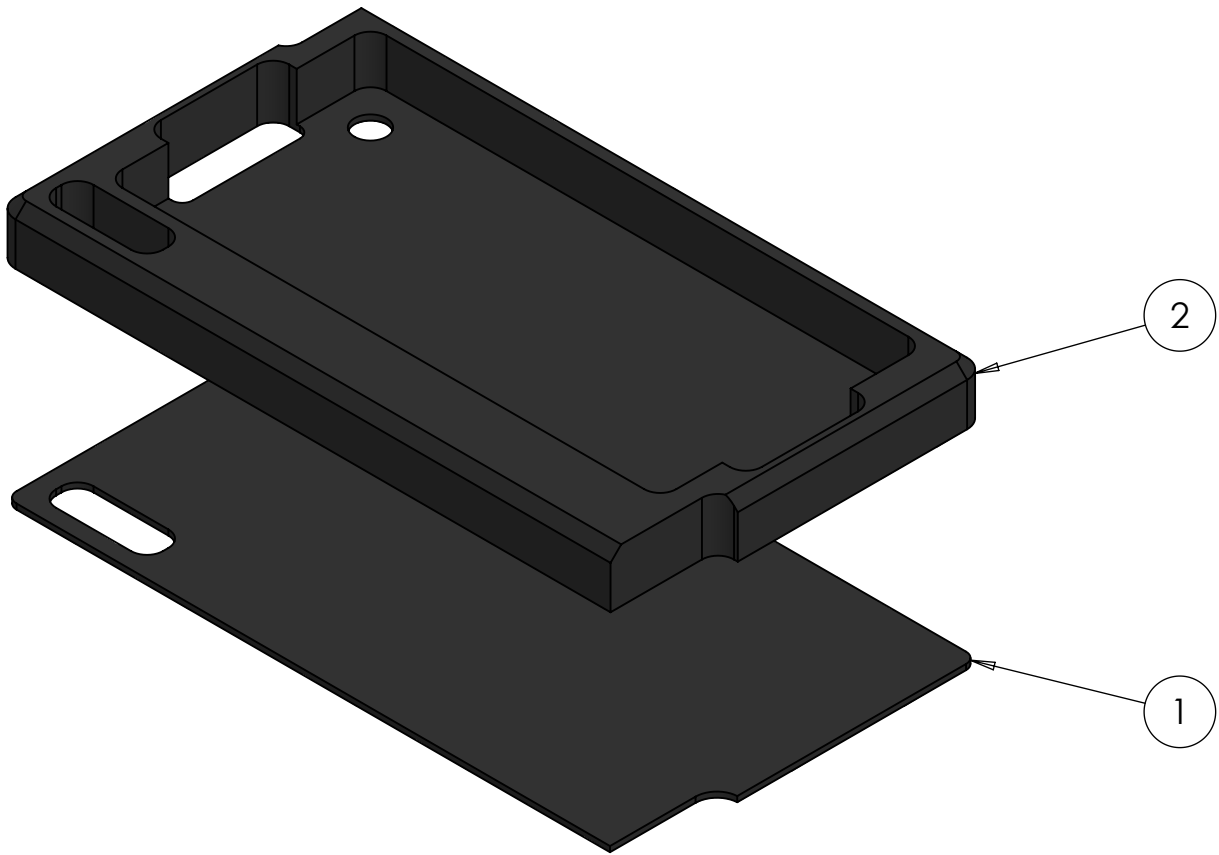
DO NOT SCALE DRAWING - DRAWN ON SOLIDWORKS
IF IN DOUBT ASK

ITEM NO.	PART NUMBER	DESCRIPTION	QTY.
1	M101047	PLASTIC INSERT TOP LAYER	1
2	M101080	FOAM INSERT TOP LAYER	1




NOTE:
PARTS TO BE ADHESIVELY BONDED TOGETHER USING RS PRO SPRAY ADHESIVE (388-8601) OR SIMILAR

REV.	DESCRIPTION	DATE	STATUS	APPROVED
A	NEW ISSUE	04/10/2016	ISSUED	ML
B	M101047 & M101080 UPDATED	03/11/2016	ISSUED	ML



DO NOT SCALE DRAWING - DRAWN ON SOLIDWORKS
IF IN DOUBT ASK



Home Office

Centre for Applied Science
and Technology

UNLESS OTHERWISE SPECIFIED:
1. DIMENSIONS ARE IN MILLIMETRES
2. SURFACE FINISH: 1.6µm
3. GENERAL TOLERANCES: ±0.10
4. HOLES: ±0.10
5. ANGLES: ±0.25°
6. DE-BURR ALL HOLES & SHARP EDGES

	NAME	DATE
DRAWN	MS	01/11/2016
MODELLED	MS	01/11/2016
CHECKED	RB	03/11/2016

PROJECT NAME : FIT
PROJECT CODE : 71
ADELPHI CODE : 9564013

MATERIAL:
SEE BOM

SECURITY:
OFFICIAL

FINISH:
NATURAL

WEIGHT: 1164.97 g
VOLUME: mm³

TITLE:
TOP LAYER INSERT ASSEMBLY

DWG NO: M101046

JOB NUMBER : D13/16

USED ON: M101040

STEP FILE NAME : STEP-M101046-B

FILENAME: M101046

STL FILE NAME : STL-M101046-B

SCALE:1:5

DXF FILE NAME : DXF-M101046-B

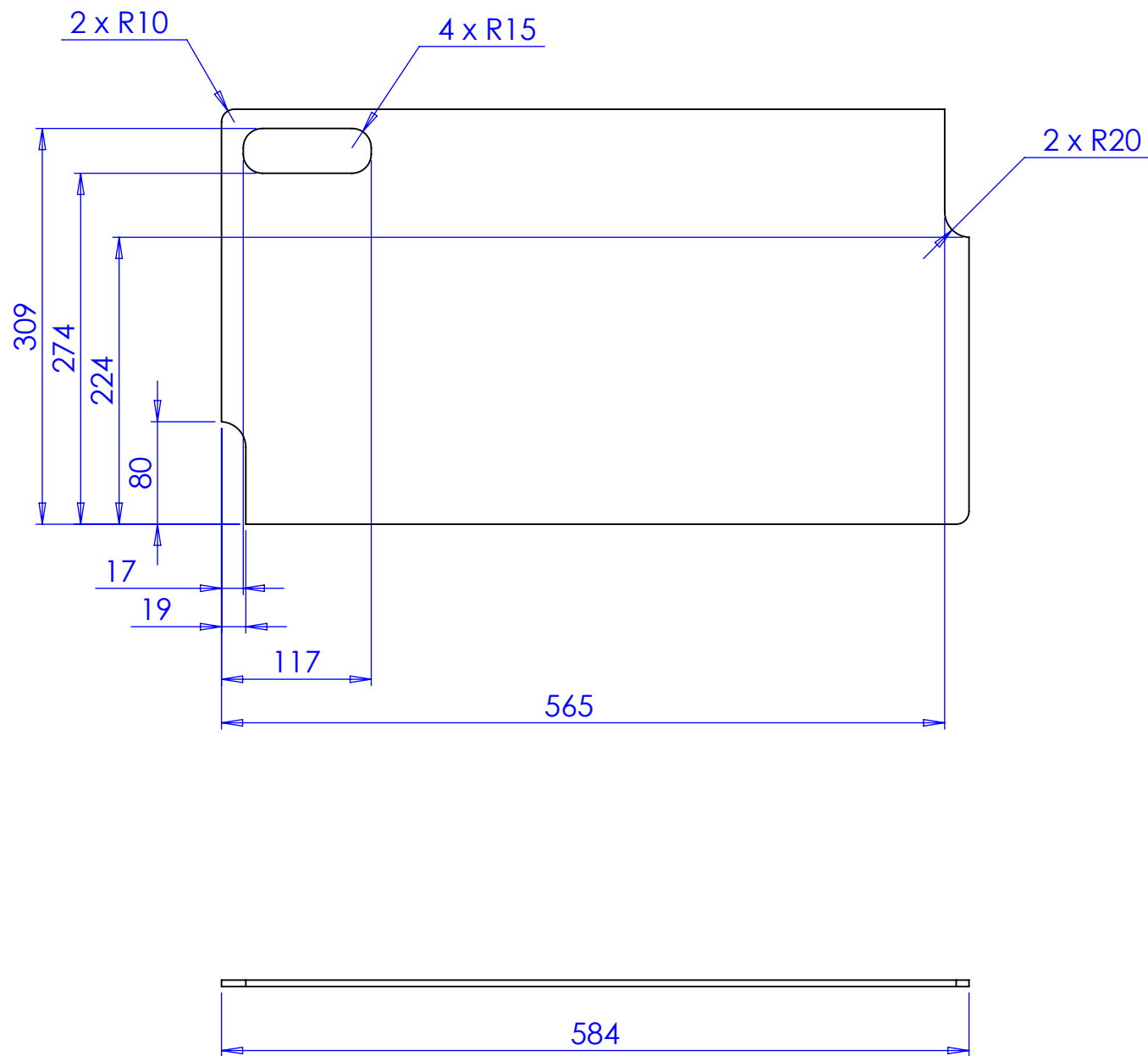
SHEET 1 OF 1

A2

Woodcock Hill
Sandridge
St Albans
AL4 9HQ

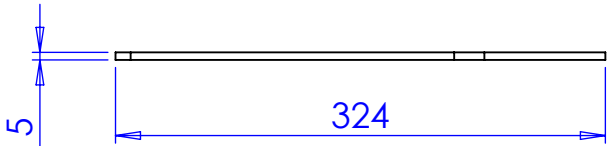
Tel: 01727-816377
Email: castcad@homeoffice.gsi.gov.uk

HOME OFFICE CENTRE FOR APPLIED SCIENCE AND TECHNOLOGY (HOME OFFICE CAST) ©2016. THIS DOCUMENT CONTAINS COMMERCIAL SENSITIVE INFORMATION. ITS CONTENTS ARE THE PROPERTY OF HOME OFFICE CAST. IT MAY NOT BE USED, COPIED OR DISCLOSED WITHOUT THE PRIOR AUTHORIZATION OF HOME OFFICE CAST. PRINTED COPIES MUST BE KEPT SECURE AND NOT READ IN AN INSECURE ENVIRONMENT. THIS DOCUMENT IS RETURNABLE ON DEMAND.

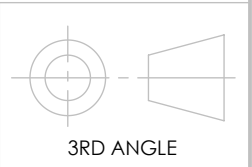



NOTES:
DXF, STL AND/OR STEP FILES AVAILABLE ON REQUEST

REV.	DESCRIPTION	DATE	STATUS	APPROVED
A	NEW ISSUE	04/10/2016	ISSUED	ML
B	OUTSIDE DIMENSIONS ALTERED	03/11/2016	ISSUED	ML



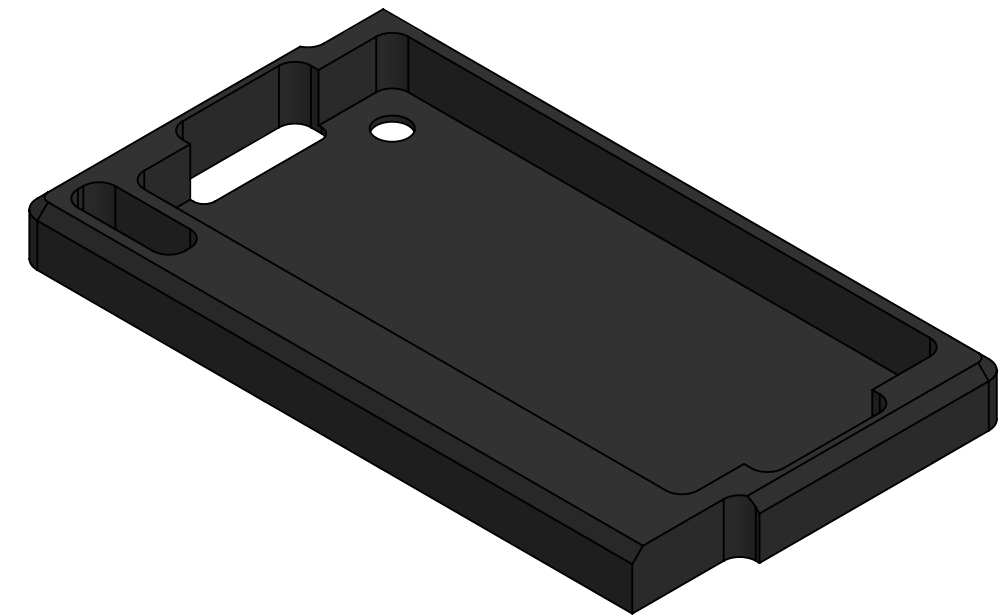
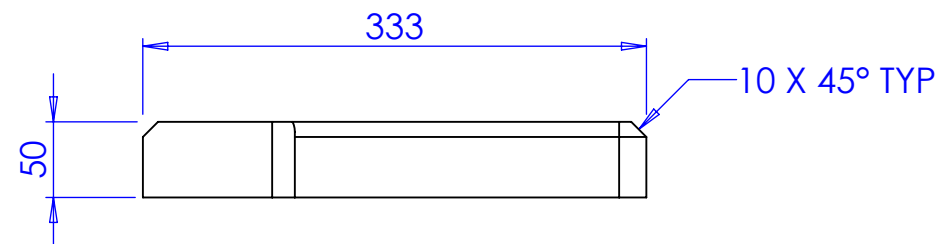
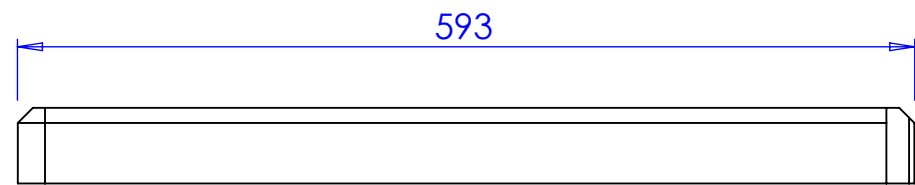
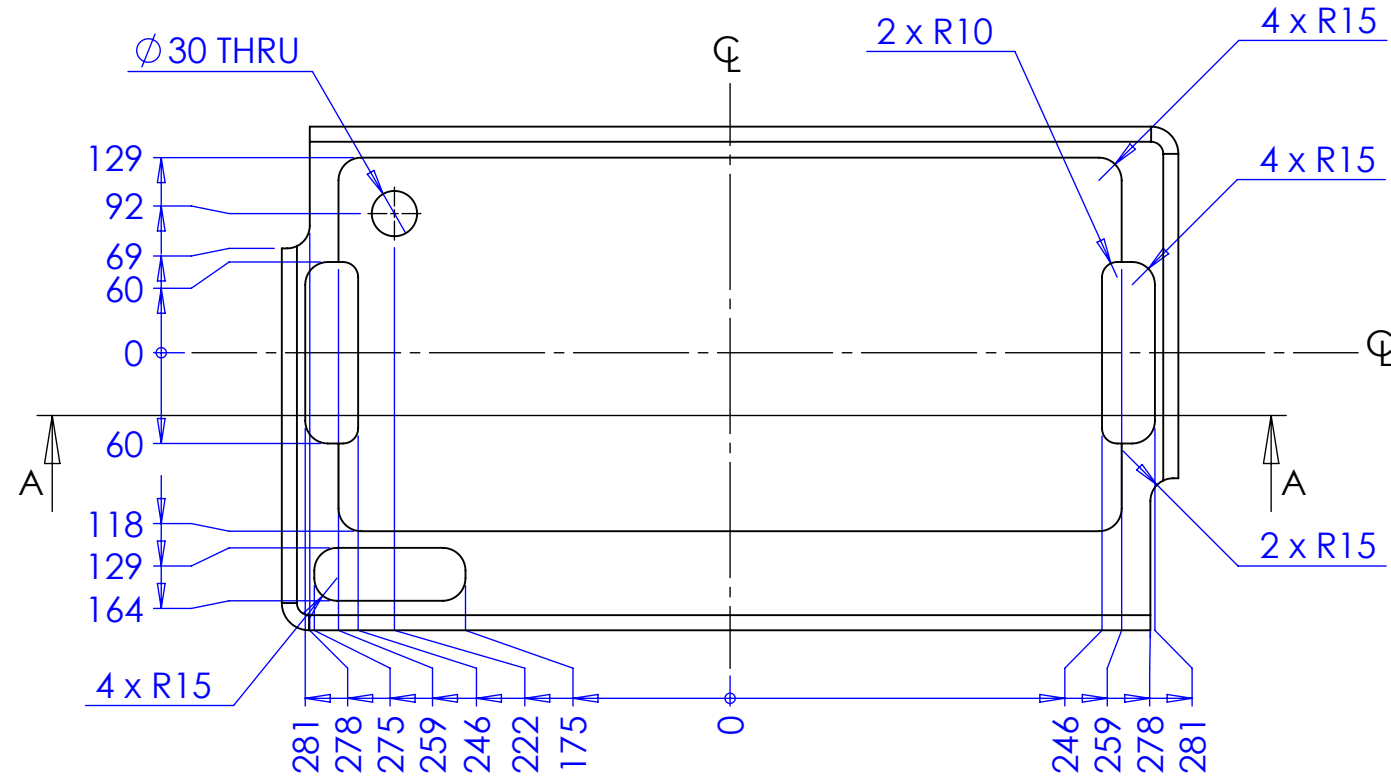
DO NOT SCALE DRAWING - DRAWN ON SOLIDWORKS
IF IN DOUBT ASK



<div></div> <div>Home Office</div> <div>Centre for Applied Science and Technology</div>	UNLESS OTHERWISE SPECIFIED: 1. DIMENSIONS ARE IN MILLIMETRES 2. SURFACE FINISH: 1.6µm 3. GENERAL TOLERANCES: ±0.10 4. HOLES: ±0.10 5. ANGLES: ±0.25° 6: DE-BURR ALL HOLES &SHARP EDGES		MATERIAL: POLYPROPYLENE (BLACK)	FINISH: NATURAL
			SECURITY: OFFICIAL	WEIGHT: 851.91 g
			VOLUME: 913084.68 mm³	
			TITLE: PLASTIC INSERT TOP LAYER	
<div>Woodcock Hill Sandridge St Albans AL4 9HQ</div> <div>Tel: 01727-816377 Email: castcad@homeoffice.gsi.gov.uk</div>		PROJECT NAME :	FIT	
		PROJECT CODE :	71	
		ADELPHI CODE :	9564013	
HOME OFFICE CENTRE FOR APPLIED SCIENCE AND TECHNOLOGY (HOME OFFICE CAST) ©2016. THIS DOCUMENT CONTAINS COMMERCIALLY SENSITIVE INFORMATION. ITS CONTENTS ARE THE PROPERTY OF HOME OFFICE CAST. IT MAY NOT BE USED, COPIED OR DISCLOSED WITH OUT THE PRIOR AUTHORISATION OF HOME OFFICE CAST. PRINTED COPIES MUST BE KEPT SECURE AND NOT READ IN AN UNSECURE ENVIRONMENT. THIS DOCUMENT IS RETURNABLE ON DEMAND.				



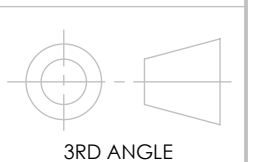
SECTION A-A




REV.	DESCRIPTION	DATE	STATUS	APPROVED
A	NEW ISSUE	13/10/2016	ISSUED	ML
B	UPDATED OUTSIDE EDGES, NARROWED HAND HOLES, 30MM THRU HOLE & 10X45 CHAMFER ADDED	03/11/2016	ISSUED	ML

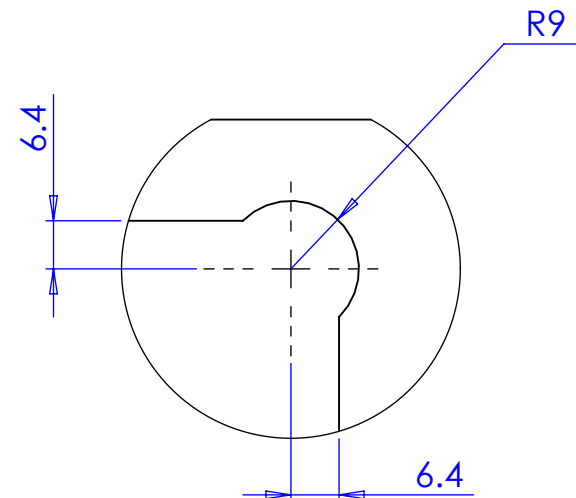
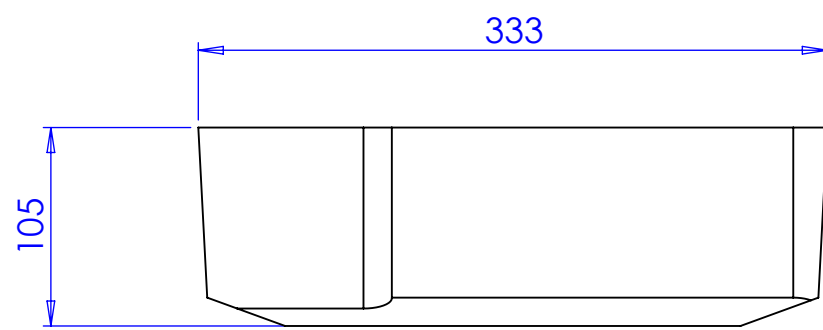
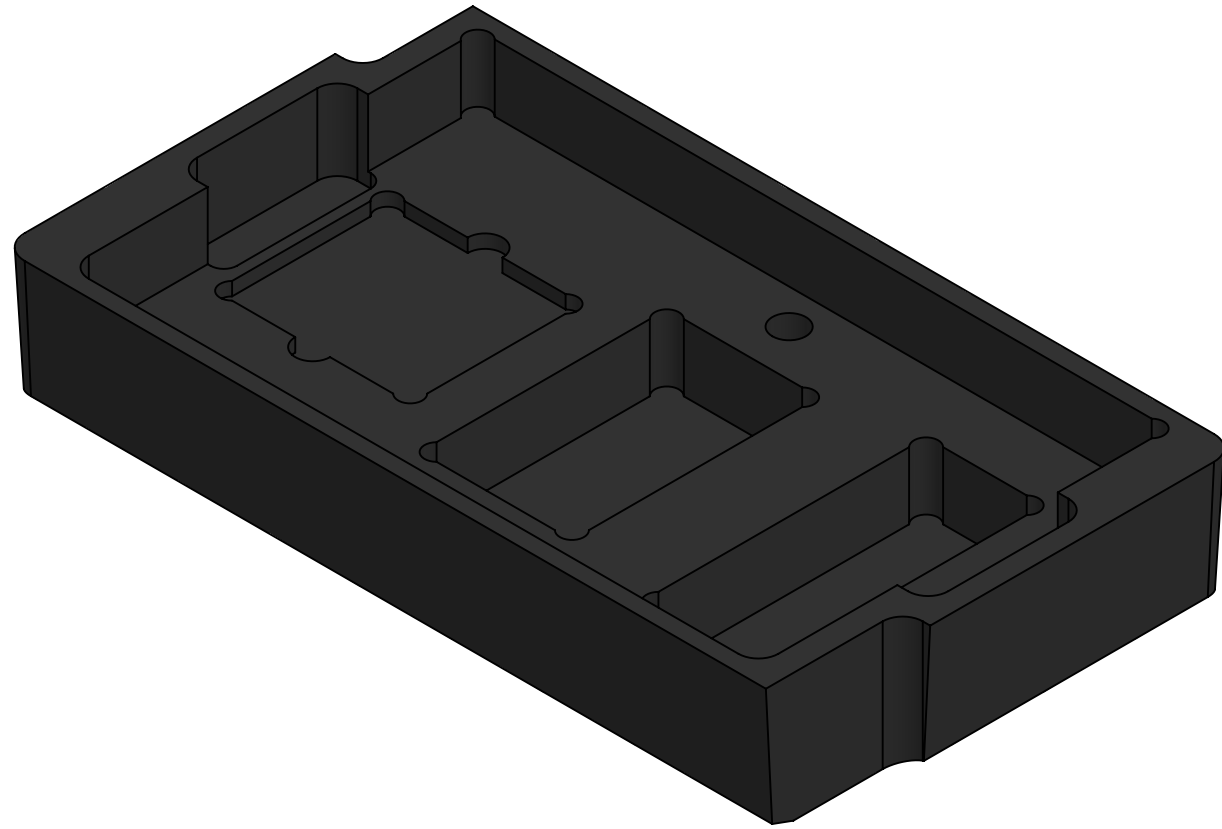
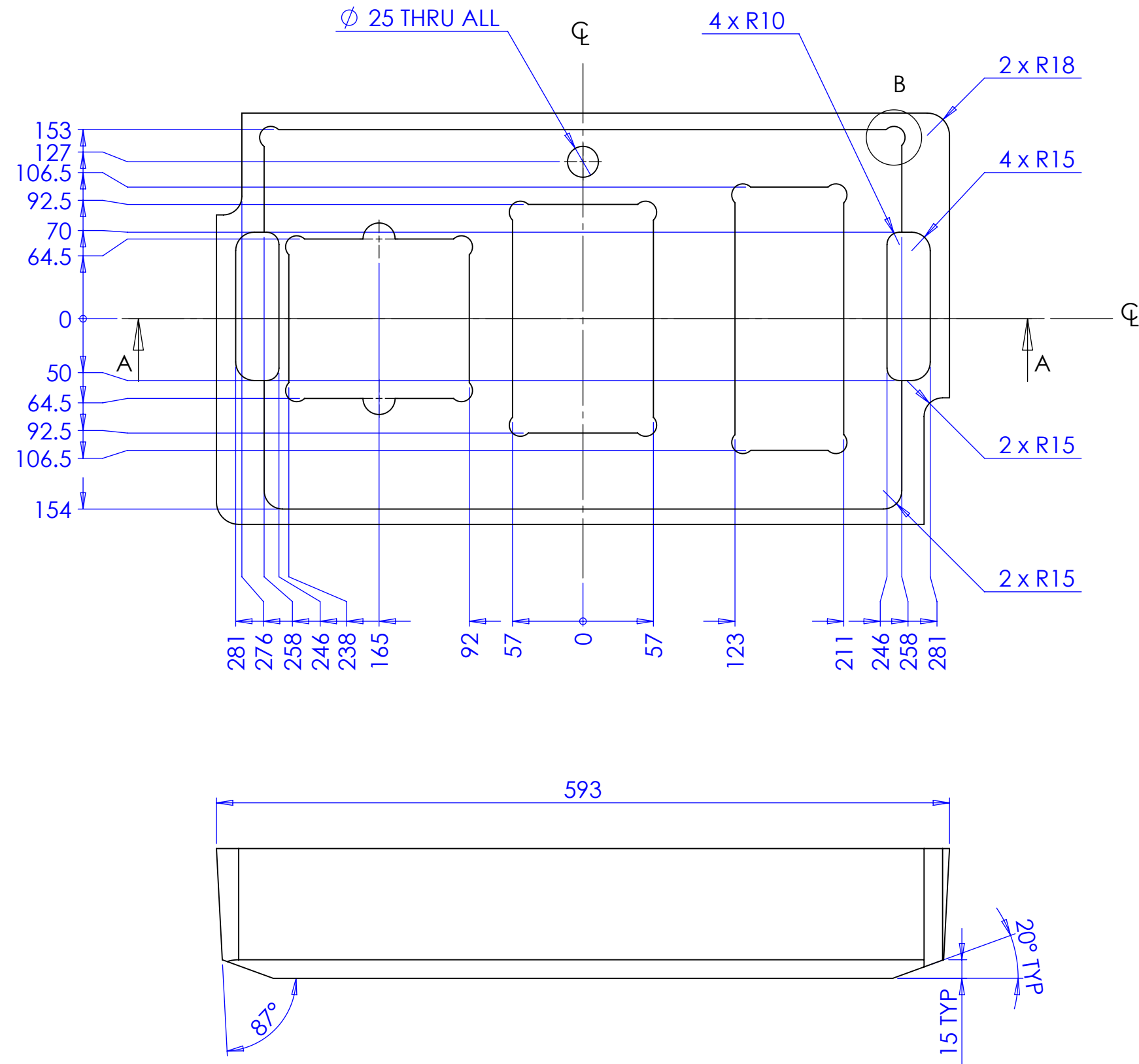
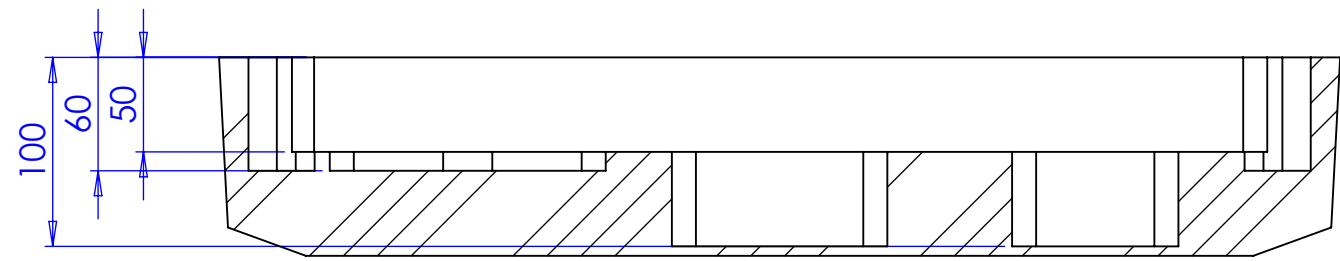
NOTES:
STEP OR IGES FILES AVAILABLE ON REQUEST

DO NOT SCALE DRAWING - DRAWN ON SOLIDWORKS
IF IN DOUBT ASK



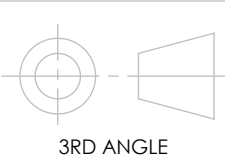
<div></div> <div>Home Office</div> <div>Centre for Applied Science and Technology</div>	UNLESS OTHERWISE SPECIFIED: 1. DIMENSIONS ARE IN MILLIMETRES 2. GENERAL TOLERANCES: ±2 3. HOLES: ±2 4. ANGLES: ±3°			MATERIAL: Polyethylene Foam 45 kg/m3 Closed Cell	FINISH: NATURAL
				SECURITY: OFFICIAL	WEIGHT: 313.05761 g
					VOLUME: 6956835.75416 mm³
				TITLE: FOAM INSERT TOP LAYER	
				DWG NO: M101080	JOB NUMBER : D13/16
Woodcock Hill Sandridge St Albans AL4 9HQ	Tel: 01727-816377 Email: castcad@homeoffice.gsi.gov.uk	PROJECT NAME : FIT PROJECT CODE : 71 ADELPHI CODE : 9564013	USED ON: M101040	STEP FILE NAME : STL FILE NAME : DXF FILE NAME :	STEP-M101080-B STL-M101080-B DXF-M101080-B
			FILENAME: M101080	SCALE: 1:5	SHEET 1 OF 1 A3
HOME OFFICE CENTRE FOR APPLIED SCIENCE AND TECHNOLOGY (HOME OFFICE CAST) ©2016. THIS DOCUMENT CONTAINS COMMERCIAL SENSITIVE INFORMATION, ITS CONTENTS ARE THE PROPERTY OF HOME OFFICE CAST. IT MAY NOT BE USED, COPIED OR DISCLOSED WITH OUT THE PRIOR AUTHORISATION OF HOME OFFICE CAST. PRINTED COPIES MUST BE KEPT SECURE AND NOT READ IN AN UNSECURE ENVIRONMENT. THIS DOCUMENT IS RETURNABLE ON DEMAND.					


REV.	DESCRIPTION	DATE	STATUS	APPROVED
A	NEW ISSUE	13/10/2016	ISSUED	ML
B	OUSIDE DRAFT ADDED, CORNER RELIEFS ADDED & EXTENAL HAND HOLES NARROWED	03/11/2016	ISSUED	ML



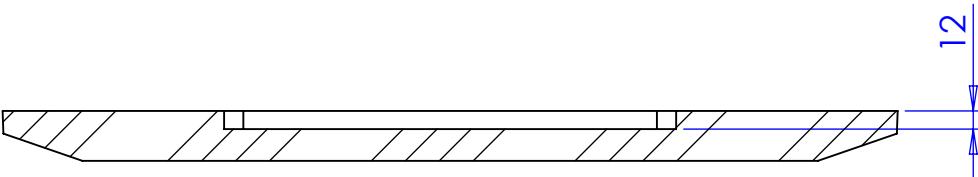
NOTES:
STEP OR IGES FILES AVAILABLE ON REQUEST

DO NOT SCALE DRAWING - DRAWN ON SOLIDWORKS
IF IN DOUBT ASK

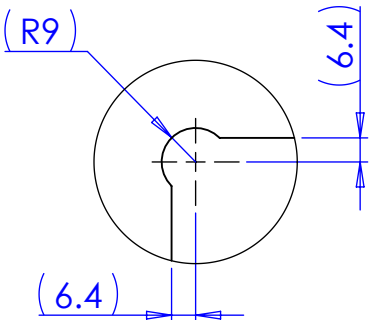
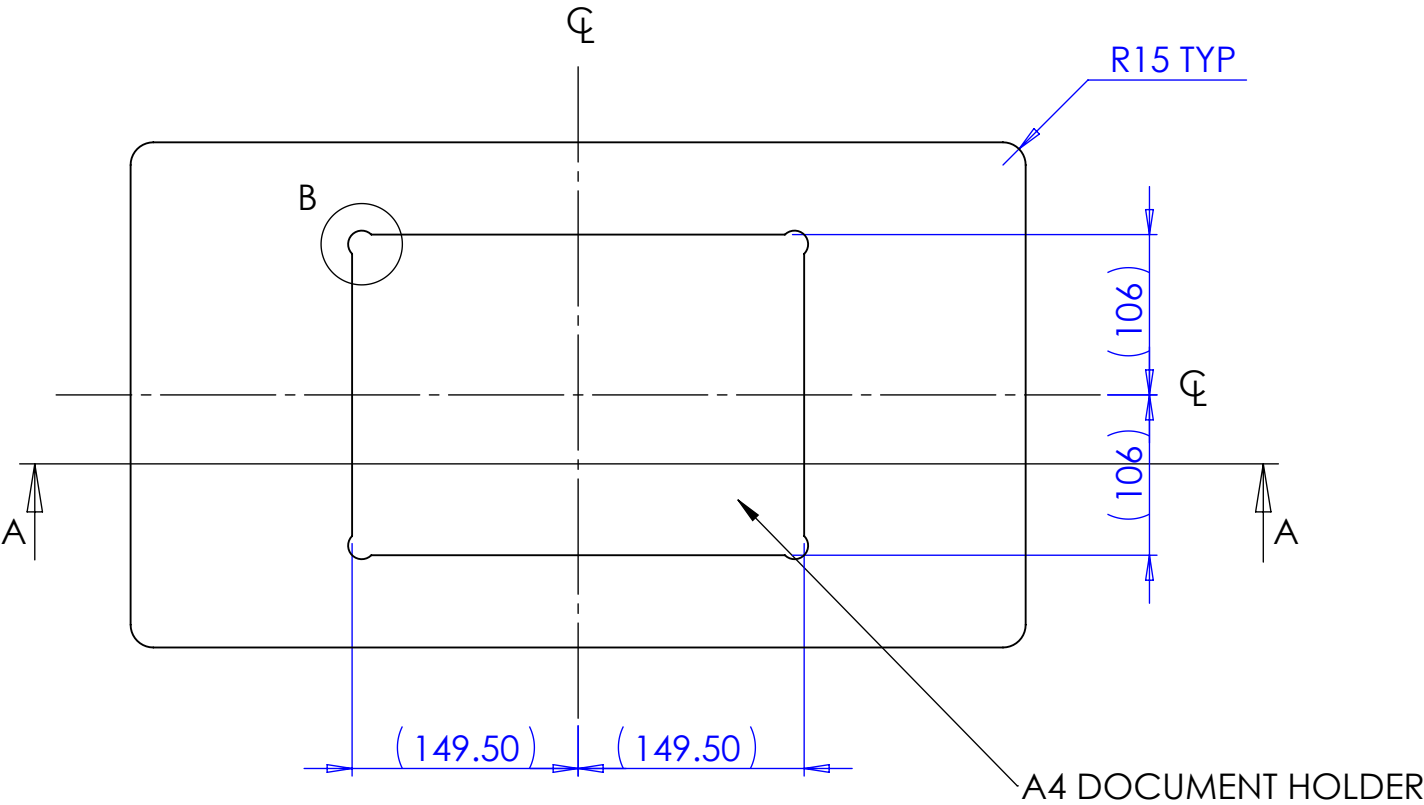
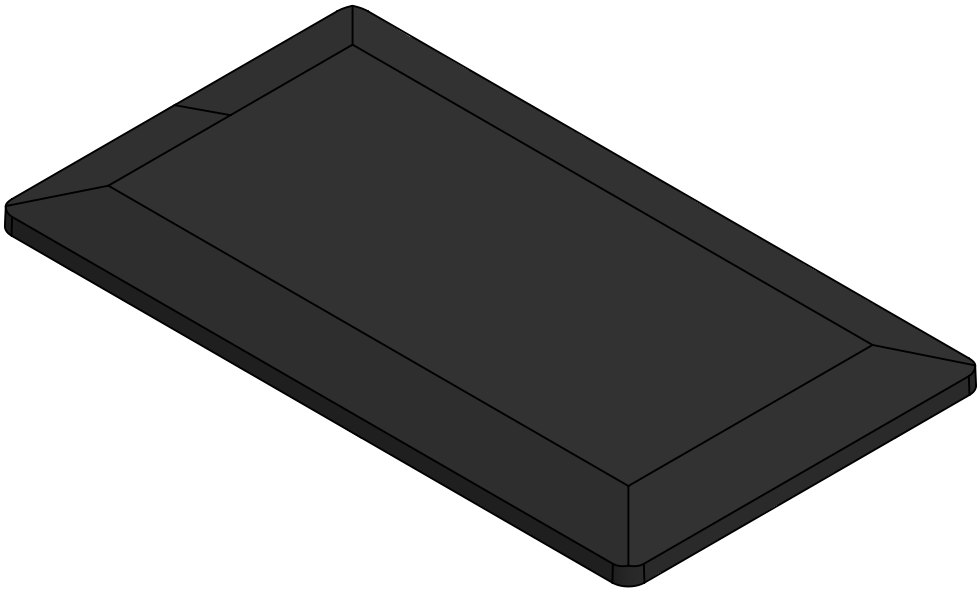
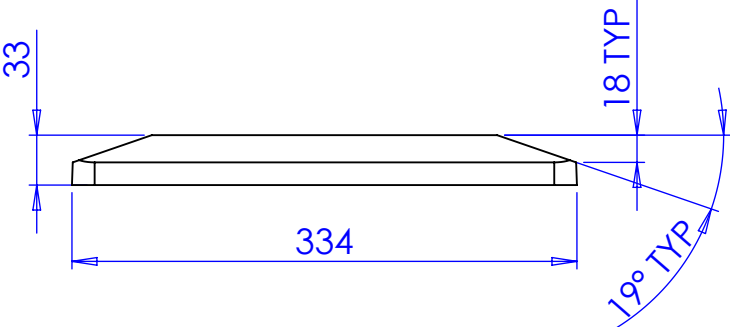
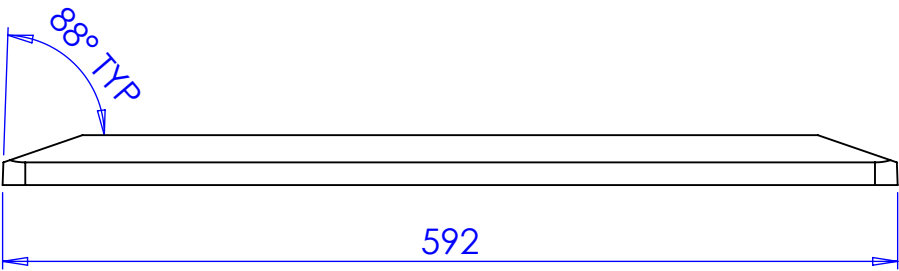


<div></div> <div>Home Office</div> <div>Centre for Applied Science and Technology</div> <div><div>Woodcock Hill Sandridge St Albans AL4 9HQ</div><div>Tel: 01727-816377 Email: castcad@homeoffice.gsi.gov.uk</div></div>	UNLESS OTHERWISE SPECIFIED:		MATERIAL: Polyethylene Foam 45 kg/m3 Closed Cell		FINISH: NATURAL		
	1. DIMENSIONS ARE IN MILLIMETRES		WEIGHT: 812.42639 g				
	2. GENERAL TOLERANCES: ±2						
	3. HOLES: ±2						
	4. ANGLES: ±3°		VOLUME: 18053919.81922 mm				
		NAME		DATE		TITLE: FOAM INSERT BASE LAYER	
DRAWN		MS		31/10/2016		DWG NO: M101079	
MODELLED		MS		31/10/2016			
CHECKED		RB		03/11/2016			
		PROJECT NAME :		FIT		JOB NUMBER : D13/16	
		PROJECT CODE :		71			
		ADELPHI CODE :		9564013			
HOME OFFICE CENTRE FOR APPLIED SCIENCE AND TECHNOLOGY (HOME OFFICE CAST) ©2016. THIS DOCUMENT CONTAINS COMMERCIAL SENSITIVE INFORMATION, ITS CONTENTS ARE THE PROPERTY OF HOME OFFICE CAST. IT MAY NOT BE USED, COPIED OR DISCLOSED WITHOUT THE PRIOR AUTHORITY OF HOME OFFICE CAST. PRINTED COPIES MUST BE KEPT SECURE AND NOT READ IN AN INSECURE ENVIRONMENT. THIS DOCUMENT IS RETURNABLE ON DEMAND.							
				FILENAME: M101079		STEP FILE NAME : STEP-M101079-B	
				SCALE:1:4		STL FILE NAME : STL-M101079-B	
				SHEET 1 OF 1		DXF FILE NAME : DXF-M101079-B	
						A2	

REV.	DESCRIPTION	DATE	STATUS	APPROVED
A	NEW ISSUE	13/10/2016	ISSUED	ML
B	OUSIDE EDGES RESHAPED, OVERALL THICKNESS REDUCED BY 2MM & DOCUMENT HOLDER ADDED	03/11/2016	ISSUED	ML

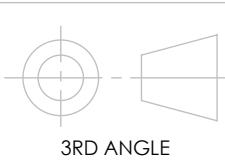


SECTION A-A




DETAIL B
SCALE 1 : 2
4 POSN

DO NOT SCALE DRAWING - DRAWN ON SOLIDWORKS
IF IN DOUBT ASK

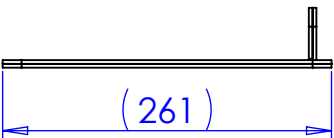
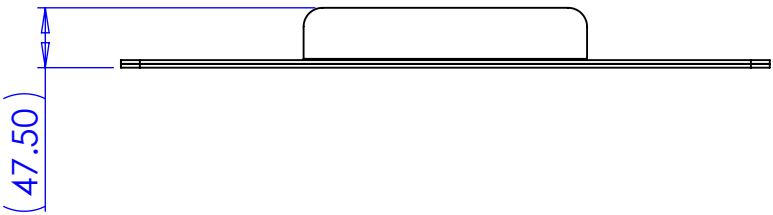
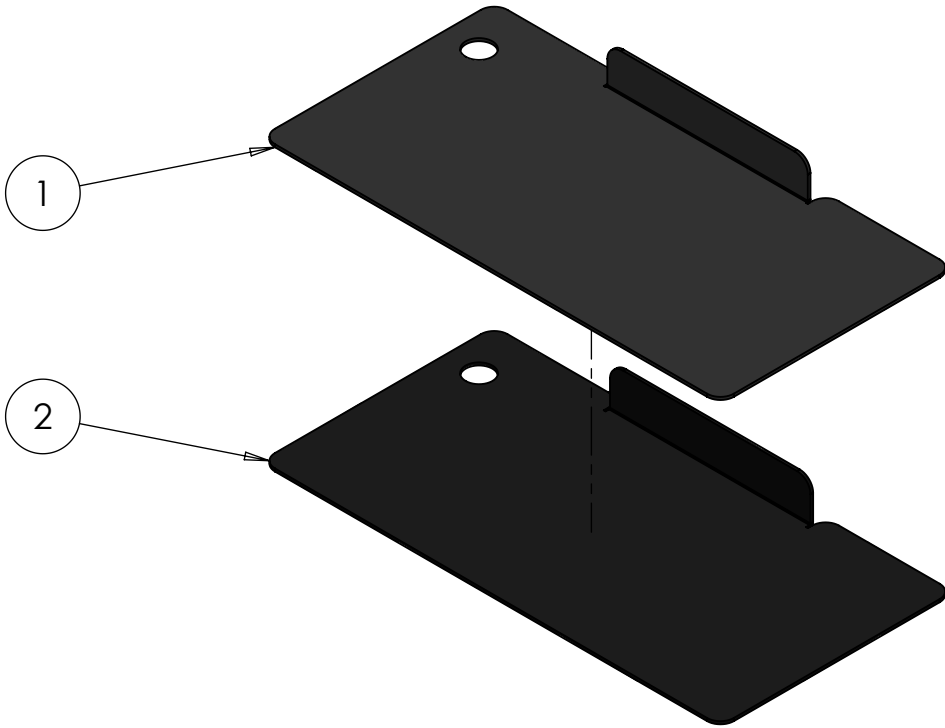
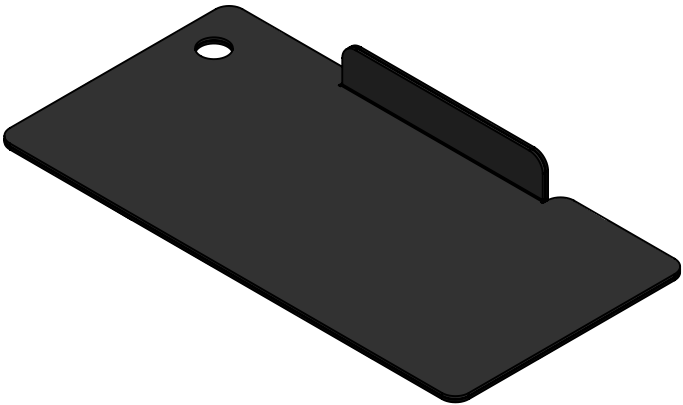
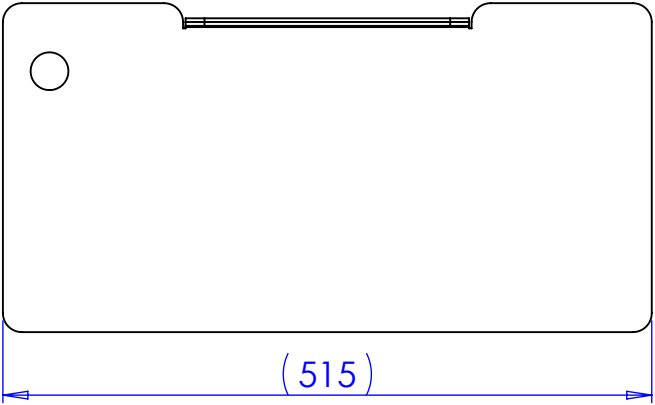


- NOTES:
- STEP OR IGES FILE AVAILABLE ON REQUEST
 - DOCUMENT HOLDER TO BE INCLUDED IN POSITION SHOWN; DESIGN TO BE SPECIFIED BY SUPPLIER. TO FIT A4 DOCUMENT, DEPTH 12MM

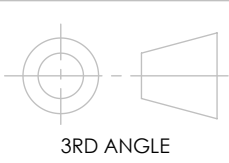
<div></div> <div>Home Office</div> <div>Centre for Applied Science and Technology</div>	UNLESS OTHERWISE SPECIFIED: 1. DIMENSIONS ARE IN MILLIMETRES 2. SURFACE FINISH: 1.6µm 3. GENERAL TOLERANCES: ±0.10 4. HOLES: ±0.10 5. ANGLES: ±0.25° 6: DE-BURR ALL HOLES &SHARP EDGES		MATERIAL: Polyethylene Foam 45 kg/m3 Closed Cell		FINISH: NATURAL				
			SECURITY: OFFICIAL		WEIGHT: 477.96153 g				
					VOLUME: 10621367.30606 mm				
			TITLE: FOAM INSERT LID						
<div>Woodcock Hill Sandridge St Albans AL4 9HQ</div> <div>Tel: 01727-816377 Email: castcad@homeoffice.gsi.gov.uk</div>			NAME	DATE	DWG NO: M101081		JOB NUMBER : D13/16		
		DRAWN	MS	01/11/2016					
		MODELLED	MS	01/11/2016					
		CHECKED	RB	03/11/2016					
		PROJECT NAME :		FIT					
		PROJECT CODE :		71					
		ADELPHI CODE :		9564013					
HOME OFFICE CENTRE FOR APPLIED SCIENCE AND TECHNOLOGY (HOME OFFICE CAST) ©2016. THIS DOCUMENT CONTAINS COMMERCIALLY SENSITIVE INFORMATION. ITS CONTENTS ARE THE PROPERTY OF HOME OFFICE CAST. IT MAY NOT BE USED, COPIED OR DISCLOSED WITH OUT THE PRIOR AUTHORISATION OF HOME OFFICE CAST. PRINTED COPIES MUST BE KEPT SECURE AND NOT READ IN AN UNSECURE ENVIRONMENT. THIS DOCUMENT IS RETURNABLE ON DEMAND.									
				USED ON: M101040		STEP FILE NAME :		STEP-M101081-B	
				FILENAME: M101081		STL FILE NAME :		STL-M101081-B	
						DXF FILE NAME :		DXF-M101081-B	
				SCALE:1:5		SHEET 1 OF 1		A3	

ITEM NO.	PART NUMBER	DESCRIPTION	QTY.
1	M101083	MIDDLE LAYER FOAM	1
2	M101084	MIDDLE LAYER PLASTIC	1


REV.	DESCRIPTION	DATE	STATUS	APPROVED
A	NEW ISSUE	30/10/2016	ISSUED	ML

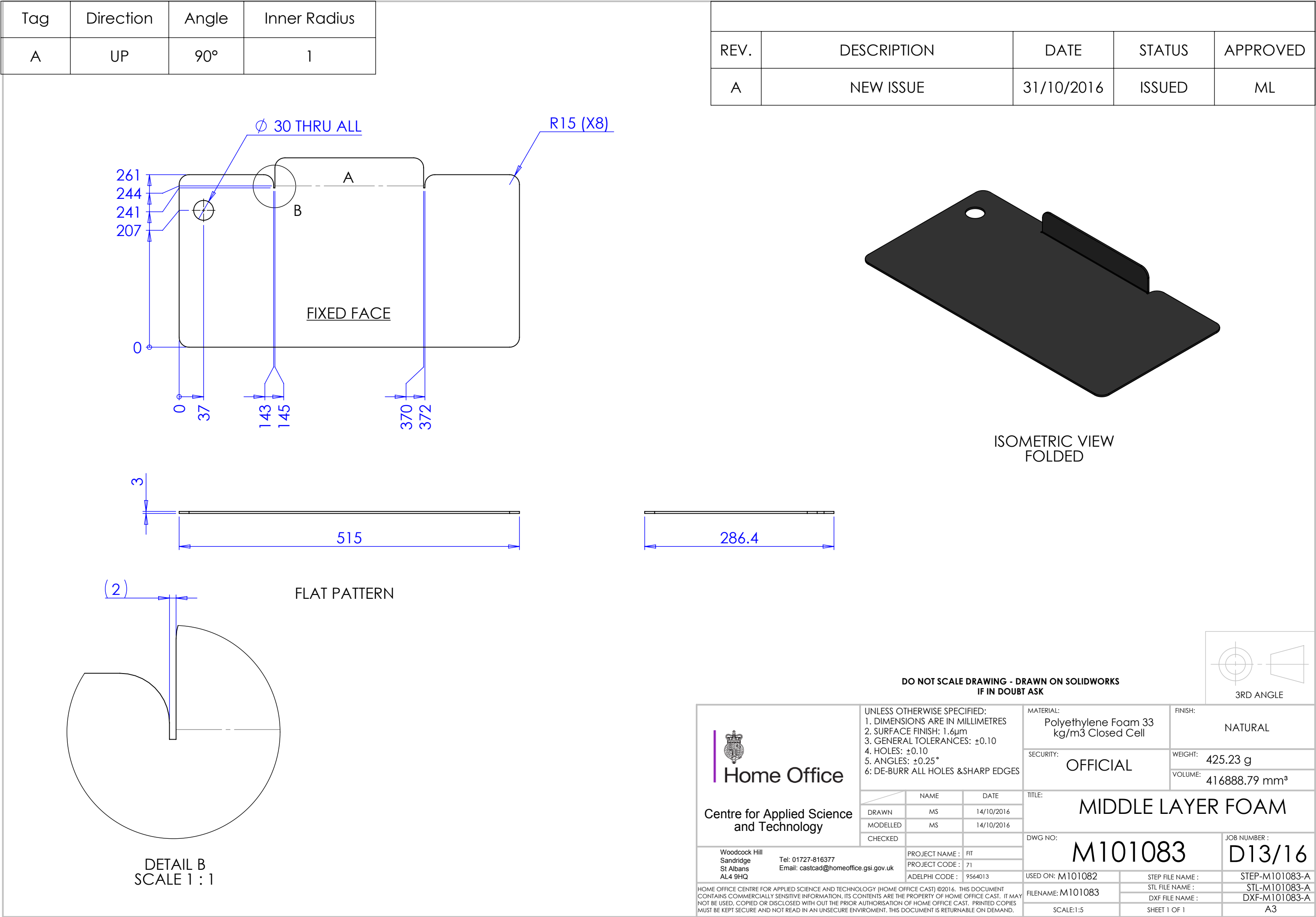


DO NOT SCALE DRAWING - DRAWN ON SOLIDWORKS
IF IN DOUBT ASK



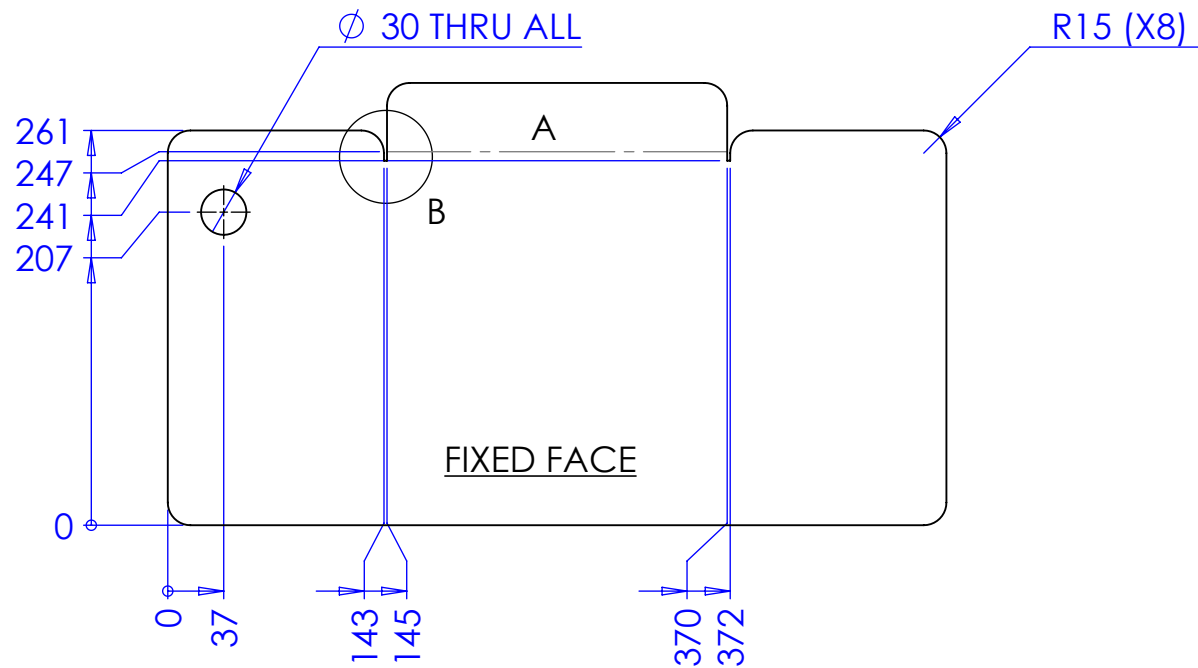
NOTES:
ITEM NO. 1 (M101083) & 2 (M101084) TO BE ADHESIVELY BONDED
TOGETHER USING RS PRO SPRAY ADHESIVE (RS PART NUMBER: 388-8601)

 Home Office Centre for Applied Science and Technology	UNLESS OTHERWISE SPECIFIED: 1. DIMENSIONS ARE IN MILLIMETRES 2. SURFACE FINISH: 1.6µm 3. GENERAL TOLERANCES: ±0.10 4. HOLES: ±0.10 5. ANGLES: ±0.25° 6: DE-BURR ALL HOLES & SHARP EDGES		MATERIAL: SEE BOM	FINISH: NATURAL
			SECURITY: OFFICIAL	WEIGHT: 817.96 g
			VOLUME: mm³	
			TITLE: MIDDLE LAYER INSERT ASSEMBLY	
		DWG NO: M101082	JOB NUMBER : D13/16	
		USED ON: M101040	STEP FILE NAME : STEP-M101082-A	
		FILENAME: M101082	STL FILE NAME : STL-M101082-A	
		SCALE: 1:6	SHEET 1 OF 1	A3

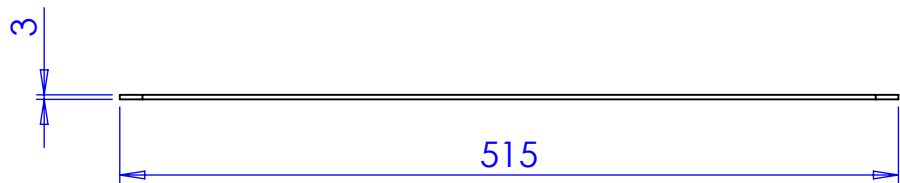


Tag	Direction	Angle	Inner Radius
A	UP	90°	1

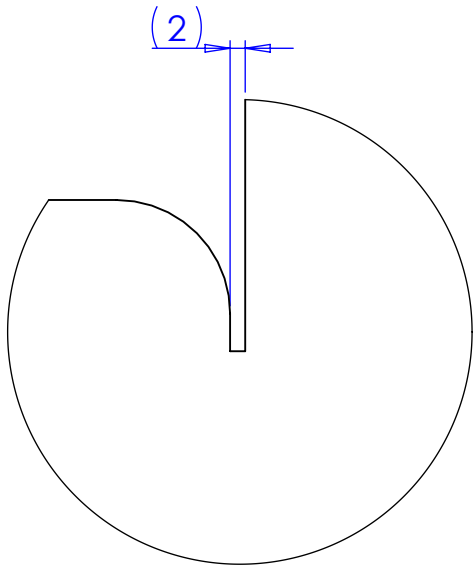
REV.	DESCRIPTION	DATE	STATUS	APPROVED
A	NEW ISSUE	30/10/2016	ISSUED	ML



ISOMETRIC VIEW
FOLDED

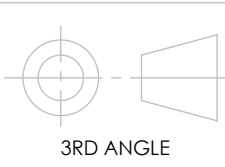



FLAT PATTERN



DETAIL B
SCALE 1 : 1

DO NOT SCALE DRAWING - DRAWN ON SOLIDWORKS
IF IN DOUBT ASK



<div></div> <div>Home Office</div> <div>Centre for Applied Science and Technology</div> <div><div><div>Woodcock Hill Sandridge St Albans AL4 9HQ</div><div>Tel: 01727-816377 Email: castcad@homeoffice.gsi.gov.uk</div></div><div><div>PROJECT NAME : PROJECT CODE : ADELPHI CODE :</div><div>FIT 71 9564013</div></div></div>	UNLESS OTHERWISE SPECIFIED: 1. DIMENSIONS ARE IN MILLIMETRES 2. SURFACE FINISH: 1.6µm 3. GENERAL TOLERANCES: ±0.10 4. HOLES: ±0.10 5. ANGLES: ±0.25° 6: DE-BURR ALL HOLES &SHARP EDGES		MATERIAL: POLYPROPYLENE		FINISH: NATURAL		
			SECURITY: OFFICIAL		WEIGHT: 392.74 g		
					VOLUME: 420938.79 mm³		
			TITLE: MIDDLE LAYER PLASTIC				
		DRAWN MS 14/10/2016		DWG NO: M101084		JOB NUMBER : D13/16	
		MODELLED MS 14/10/2016		USED ON: M101082		STEP FILE NAME : STEP-M101084-A	
		CHECKED SG 21/10/2016		FILENAME: M101084		STL FILE NAME : STL-M101084-A	
				SCALE:1:5		DXF FILE NAME : DXF-M101084-A	
				SHEET 1 OF 1		A3	
HOME OFFICE CENTRE FOR APPLIED SCIENCE AND TECHNOLOGY (HOME OFFICE CAST) ©2016. THIS DOCUMENT CONTAINS COMMERCIAL SENSITIVE INFORMATION, ITS CONTENTS ARE THE PROPERTY OF HOME OFFICE CAST. IT MAY NOT BE USED, COPIED OR DISCLOSED WITH OUT THE PRIOR AUTHORISATION OF HOME OFFICE CAST. PRINTED COPIES MUST BE KEPT SECURE AND NOT READ IN AN UNSECURE ENVIRONMENT. THIS DOCUMENT IS RETURNABLE ON DEMAND.							