

QS-5D

Outline Approval in Principle (AIP) for: the Eastern Cut Retaining Structures

7. Your outline approval in principle for the eastern cut retaining structures shall:

- 7.1. be provided using Appendix A (Model form of Approval in Principle for the design of bridges and other highway structures where UK National Standards (Eurocodes) are used) of CG 300 (Technical approval of highway structures), inclusive of all sections;
- 7.2. include a CDM designer's risk register for the eastern cut retaining structures, which describes for each significant feature, element, process or works activity:
 - 7.2.1 the constraint and the identified hazard;
 - 7.2.2 the designer's intervention to reduce or eliminate the hazard;
 - 7.2.3 any significant residual hazard that remains following the designer intervention;
 - 7.2.4 the proposed information to be provided to allow the hazard to be managed on site or in the future.

8. You may include the CDM designer's risk register and the Technical Approval Schedule as appendices to the outline approval in principle.



Project Details

Name of Project

A303 Amesbury to Berwick Down (Stonehenge)

Name of Bridge or Structure

Eastern Cut Retaining Structures

Structure Reference Number

TBA.

Summary

This Outline AIP covers the Eastern Cut Retaining Structures, formed using soil nails with reinforced sprayed concrete facing covering the nail heads and cast in situ reinforced concrete outer facing with a finish to suit design vision and noise reduction requirements. The cut slope shall comprise an initial 2.5m deep unreinforced 1:2 (V:H) soil slope within the superficial deposits, then a soil nailed retained cut at an angle of 10:1 (V:H) through the chalk bedrock.

This document records the agreed basis and outline criteria to be carried forwards for the detailed design of a highway structure in accordance with Highways England's Technical Approval (TA) procedures as outlined in CG 300. These procedures are required to give increased assurance for the required execution of highway structures.

Expected construction dates of scheme from 2023 to 2028.

1. HIGHWAY DETAILS

1.1 Type of highway

A two-lane carriageway will be provided for each direction of travel.

1.2 Permitted traffic speed¹

The route through the retained cut will be restricted to 70mph (110km/h).

1.3 Existing restrictions²

The retaining structure is to be constructed within the limits of deviation set by the Development Consent Order.

2. SITE DETAILS

2.1 Obstacles crossed

The proposed eastern cut retaining structures are over fields, but adjacent to the current A303 and within a World Heritage Site, therefore requiring a DCO in place and mitigations in accordance with Detailed Archaeological Mitigation Strategy (DAMS).



3. PROPOSED STRUCTURE

3.1 Description of structure and design working life³

The Eastern cut retaining structures will extend for a distance of approximately 300m on either side of the carriageway, from Chainage 10425 to Chainage 10700. The total height difference between ground level and road will vary between approximately 11.5m at the tunnel portal and zero at the end of the cutting. These distance includes the soil nail wall and the grass slope above. The soil nail structure will comprise a reinforced sprayed concrete facing covering the nail heads and a cast in situ reinforced concrete outer wall with a finish to suit design vision and noise reduction requirements. The cut slope will comprise an average 2.5m deep unreinforced 1:2 (V:H) soil slope through the superficial deposits, then the 10:1 (V:H) soil nailed retained cut through the chalk bedrock.

As the structure sits above the construction case water level and the permanent case worst water level (future level +20% climate change allowance) it is not proposed to provide a structural base slab to the cut.

A small cantilever will be provided at the top of the soil nail wall to provide a mounting point for the pedestrian railing, the pedestrian walkway will run along the top of the wall. At the location of the lay-by the cantilever will extend out to cover the hard standing area at the back of the layby. At this location the cantilever will consist of reinforced concrete and be structurally connected to the facing in situ concrete wall and down to a foundation detail.

The eastern cut retaining structures will be designed for a design working life of 120 years in accordance with Table NA.2.1 of British National Annex to BS EN 1990:2002.

3.2 Structural type

Reinforced shotcrete faced structure supported by soil nails. The sprayed concrete facing will be reinforced with steel mesh reinforcement and will be faced with a cast in situ reinforced concrete facing with a finish to suit design vision and noise reduction requirements.

3.3 Foundation type

N/A

3.4 Span arrangements

The maximum height of the soil nail structure will be approximately 6.5m from road level to underside of the cantilever, the thickest part of the cantilever will be approximately 440mm. The remaining distance from top of cantilever to the required ground level will be made up of grass slope, this will vary with existing ground level and the decreasing height of the soil nail wall. The proposed soil nail layout is 1.2m centre to centre (c/c) horizontal and vertical spacing. The soil nails would be arranged in an offset grid layout.

The cantilever will extend approximately 270mm out from the top of the soil nail wall in the typical case, this being the extent of the railing detail. The cut has been sized such it will not intrude into the vehicle envelope provided above the verge. In the location of the lay-by the cantilever will extend out 2m from the top of the soil nail wall, it will cover the hardstanding area only and not intrude into vehicle envelope or the verge.



3.5 Articulation arrangements

The proposed sprayed concrete facing will be designed to span between the soil nails and cantilever vertically and horizontally at the extents of the facing. Expansion joints between facing panels will be in the form of compressible material inserted between the panels.

3.6 Classes and levels⁴

A) Consequence class

CC3 in accordance with Table B1, BS EN 1990:2002 + A1:2005 and CD 350, Table 7.2.

B) Reliability class

RC3 in accordance with Clause B3.2, BS EN 1990:2002 + A1:2005 and CD 350, Table 7.2.

C) Inspection level

IL3 in accordance with Table B5, BS EN 1990:2002 + A1:2005 and CD 350, Table 7.2.

3.7 Road restraint systems requirements

The lower 1.5m of wall will comprise a smooth faced reinforced concrete VRS.

3.8 Proposals for water management.

The maximum anticipated groundwater level in this location, (using 20% allowance for Climate Change) is 73.1m, which is substantially below the level of the structures, so water management is primarily concerned with highway drainage and managing run off water.

An infiltration system positioned beneath the central reserve will be used to drain the carriageway in catchment 11. Water will fall to the drains at the road edge, down carrier drains and into a geo-cellular infiltration tank located under the central reserve. An overflow at the end of the retained cut will connect the tank to the main Highway drainage system outside of the eastern tunnel approaches.

Use of online attenuation systems such as oversized pipes along the carriageway including flow controls to maximize its capacity. Remotely operated pollution shut of valves in the tank will be provided.

Wastewater from the welfare facilities in the TSB will discharge to a septic tank located within the TSB basement, which can be tankered away periodically. In line with CD352, the tank will contain ventilation and fire detection/suppression. Level monitoring will be remote, via the TCMS.

The drainage system behind the soil nailed wall will collect any rainwater/infiltration and channel it down to the infiltration system described above.

3.9 Proposed arrangements for future maintenance and inspection

A) Traffic management

It is expected that in order to safely carry out inspection and certain specified maintenance activities access to the retained cut will be via the carriageway during carriageway closures.

The tunnel systems will allow the closure of only a single bore for these inspections, giving the option that when a tunnel bore is closed the other tunnel bore will be capable of operating under contraflow.



B) Arrangements for future maintenance and inspection of structure. Access arrangements to structure.

Very little maintenance of the structure itself is anticipated and risk-based strategy will be implemented regarding inspections. Maintenance activities may include:

- Carriageway re-surfacing
- Routine inspection of the retaining walls and slope
- Routine wash-down of the walls
- Routine inspection and maintenance of the drainage systems
- Routine inspection and maintenance of Parapets

Visual inspections may be carried out from a distance (i.e., from the opposite slope behind the pedestrian barrier) to minimise the requirements for road closures. Detailed inspections will require closer access for the inspectors and so lane/carriageway closures will be necessary.

Use of remote working will be maximized where possible and monitoring periods are to be agreed with Highways England in line with the requirements and intervals of Volume 2, Part 4 of the ITPD. A maintenance hard standing has been provided outside the TSB with steel VRS protection.

3.10 Environment and sustainability

Utilizing the efficient engineering solution of soil nail walls with sprayed concrete facing, as opposed to mass concrete retaining wall, reduces material and energy usage and subsequent CO₂ emissions, which benefits the environment. This methodology also eliminates the requirement for piling rigs to be visible on the horizon from the World Heritage Site.

3.11 Durability - materials and finishes⁵

The durability of materials utilized will be such that the design life of 120 years is met, with a concrete specification in accordance with BS8500-1:2015.

The soil nail tendons will be galvanized high yield steel self-drilling hollow bars with spacers, as necessary, to maintain the bar central in the drilled hole. They will comply with the requirements of BS 8006-2 and will be tested in accordance with BS 8006-2, ISO 22477-5 & BS EN1997-1. The grout will have a minimum strength of 40N/mm², will comply with EN 197-1 type CEM I, EN 447:2007 and EN 446:2007 and will be tested in accordance with EN 445:2007. A 2mm corrosion allowance on the galvanised soil nails has been allowed for at this stage.

The in situ and pre-cast concrete elements shall be grade C32/40 minimum and will have an unformed face. The sprayed concrete facing will be reinforced with mesh, with a minimum concrete cover of 55mm.

Reinforcement shall be High Yield Grade B500B or B500C 'Ribbed' bars conforming to BS 4449:2005+A2:2009 and BS EN 10080:2005 with a characteristic yield strength $f_y = 500\text{MPa}$

The final finish to all in situ concrete pours will be determined during detailed design to suit the agreed design vision and noise reduction requirements. The lower 1.5m of the road facing walls will serve as the Vehicle Restraint System (VRS) so will be smooth finished in warm natural colours.



Above that the palette will remain similar but the finish will be a rough 'natural' textured finish to reflect the design vision, the rougher finish will incorporate the acoustic/noise reduction features. Finally, the cantilevers and canopies have been classified as 'edge details' by the design vision team and so will have a smooth concrete finish, in the same palette of warm natural tones as the other retaining wall structures.

Buried concrete elements, other than piles, in permanent contact with the soil shall be painted with two coats of cut back bitumen or equivalent.

3.12 Risks and hazards considered for design, execution, maintenance and demolition. Consultation with and/or agreement from Overseeing Organisation⁶

Early identification of risks in accordance with CDM regulations are referred to in **Appendix D**.

3.13 Estimated cost of proposed structure together with other structural forms considered (including where appropriate proprietary manufactured structure), and the reasons for their rejection (including comparative whole life costs with dates of estimates)

Provided in Financial Submission.

3.14 Proposed arrangements for construction

A) Construction of structure

The structures will be constructed using the bottom-up method, to reach the invert level as soon as practicable allowing a faster construction programme

The initial excavation and works will be as follows:

- Temporary fencing installation, constructing access to work site and site preparation.
- Execution of permanent crest drain (if required) as per drainage design.
- Excavation of initial cut (2 m depth). Transportation of the excavated material to a stockpile area.
- Excavation and soil nail installation. Proposed cycle; Excavate 1.5m, drill the nail hole, install and grout the nail.
- Stabilize the 1:1 temporary slopes with geotextile blankets and Maccaferri mesh or a nominal thickness of sprayed concrete reinforced with mesh.
- Shotcrete installation. Proposed cycle; placing of bearing plate, washer and hex nut installation, placing of mesh reinforcement, placing of formers for drain holes and finally spraying of shotcrete to required thickness.
- Repeat the two cycles above to reach the final invert excavation level.

The retaining structures will be constructed to the following stages:

- Initial excavation works as described above.
- Execution of the in situ facing wall, incorporating the final finish and VRS detail at base. At the location of the lay-by where a longer cantilever is provided a base slab detail will be executed in in situ concrete and structurally connected to the facing wall.
- Execution of in situ cantilever and walkway detail.
- Backfilling and slope construction.
- Construction finishes (e.g., cattle fence, landscaping, handrail etc).



B) Traffic management

It is anticipated that traffic management will not be required as the eastern cut retaining structures do not interact with the existing A303. However, this is to be confirmed by the contractor.

C) Service diversions

No existing services in place.

D) Interface with existing structures

The existing A303 is within relatively close proximity to the proposed eastern portal structures. Predictions of the expected and worst case movements that the A303 could experience due to the works will be produced before the start of construction.

It is proposed to monitor the A303 using a series of automated total stations, all linked to the site control room to allow real time monitoring and alerts. RAG (Red-Amber-Green) trigger levels would be agreed with Highways England and the asset owner, along with associated actions that the construction works would implement. In addition, the movements would be reviewed at regular shift/daily meetings and compared against predictions for that phase to identify trends and, if necessary, pre-emptively implement mitigations before trigger levels are reached.

4. DESIGN CRITERIA

4.1 Actions

A) Permanent actions

Permanent actions will be applied in accordance with BS EN 1991-1-1 including the National Annex. The ground adjacent to the retained cut will be a 1:2 slope as per HE requirements, so a lower surcharge of 5kN/m² has been applied to the retained cut structures only.

Assumed characteristic densities:

Reinforced concrete:	25kN/m ³
Highway surfacing:	24kN/m ³
Soil density:	20kN/m ³
Groundwater:	Groundwater level for detailed design will be the extreme event level + 20% allowance for climate change. This is below the formation level of the proposed structures.
Soil nail Loads:	Soil nails shall be designed as a passive system with a nominal load of around 20kN applied following installation.

B) Snow, wind and thermal actions

Wind and snow loads are not significant for the design of the structure. Thermal actions on the exposed face of the retaining structure will be considered in detailed design.

C) Actions relating to normal traffic under AW regulations and C&U regulations⁷

None expected on any element of the retaining wall.

D) Actions relating to General Order traffic under STGO regulations⁸

None expected on any element of the retaining wall.

E) Footway or footbridge variable actions

Not applicable. This is considered to be covered by the loading identified above.



F) Actions relating to Special Order traffic, provision for exceptional abnormal indivisible; loads including location of vehicle track on deck cross-section^{9,10}

The structure will not be designed for Special Order Traffic i.e., abnormal indivisible loads.

G) Accidental actions

Actions during construction will be considered in accordance with BS EN 1991-1-6:2005 and its UK National Annex. Vehicle impact loads on walls will be applied in accordance with BS EN 1991-1-7 including the National Annex and PD6688-2:2011, where applicable.

Actions due to explosion are not considered, this will be reviewed as part of the threat and vulnerability assessment to be undertaken during detailed design.

H) Actions during construction

Changing loads on the embedded retaining walls due to the excavation and construction sequence will be assessed in accordance with BS EN 1997-1. Specific loading, e.g., due to any heavy lifting/craneage required, will be assessed on an individual basis.

I) Any special action not covered above¹¹

Not applicable

4.2 Heavy or high load route requirements and arrangements being made to preserve the route, including any provision for future heavier loads or future widening

The road is not on a Highways England advisory heavy or high load route. No provision has been made for any future tunnel designation as an advisory heavy or high load route. No provision has been made for future widening due to the nature of the Development Consent Order.

4.3 Proposed minimum headroom to be provided

New construction headroom in accordance with Table 4-1 of CD127 will be provided in the verge beneath the cantilever slab.

4.4 Authorities consulted and any special conditions required

The Stakeholder Design Consultation Group (SDGC) comprises of representation from English Heritage Trust, Historic England, The National Trust and Wiltshire Council. This group, and the organizations stakeholders represented by the group, will be consulted throughout the detailed design process.

The Tunnel Design Safety Coordination Group (TDSCG) will also be consulted during design as requirements from that group may impact the required space outside the portal for mustering, access, etc.

4.5 Standards and documents listed in the technical approval schedule (TAS)

The proposed Technical Approval Schedule is included in **Appendix A**.

4.6 Proposed departures from standards listed in 4.5

None.



4.7 Proposed departures from standards concerning methods for dealing with aspects not covered by standards listed in 4.5

None.

4.8 Proposed safety critical fixings

None.

5. STRUCTURAL ANALYSIS

5.1 Methods of analysis proposed for superstructure, substructure and foundations¹²

Soil nails will be designed in accordance with BS 8006-2 and soil parameters will be factored in accordance with BS EN 1997-1.

Analysis for the concrete facing will be carried out by manual calculations in accordance with BS EN 1992-1-1:2004 +A1:2004, BS EN 1997-1:2004 + A1:2013, and BS EN 1990:2002 + A1:2005. and the associated national annexes.

5.2 Description and diagram of idealised structure to be used for analysis

The soil nail retaining structure has been analysed using SLOPE-W ver 10.2.1.19666, a proprietary slope analysis programme developed by GeoSlope international Ltd. The figure below shows the idealised structure analysis diagram.

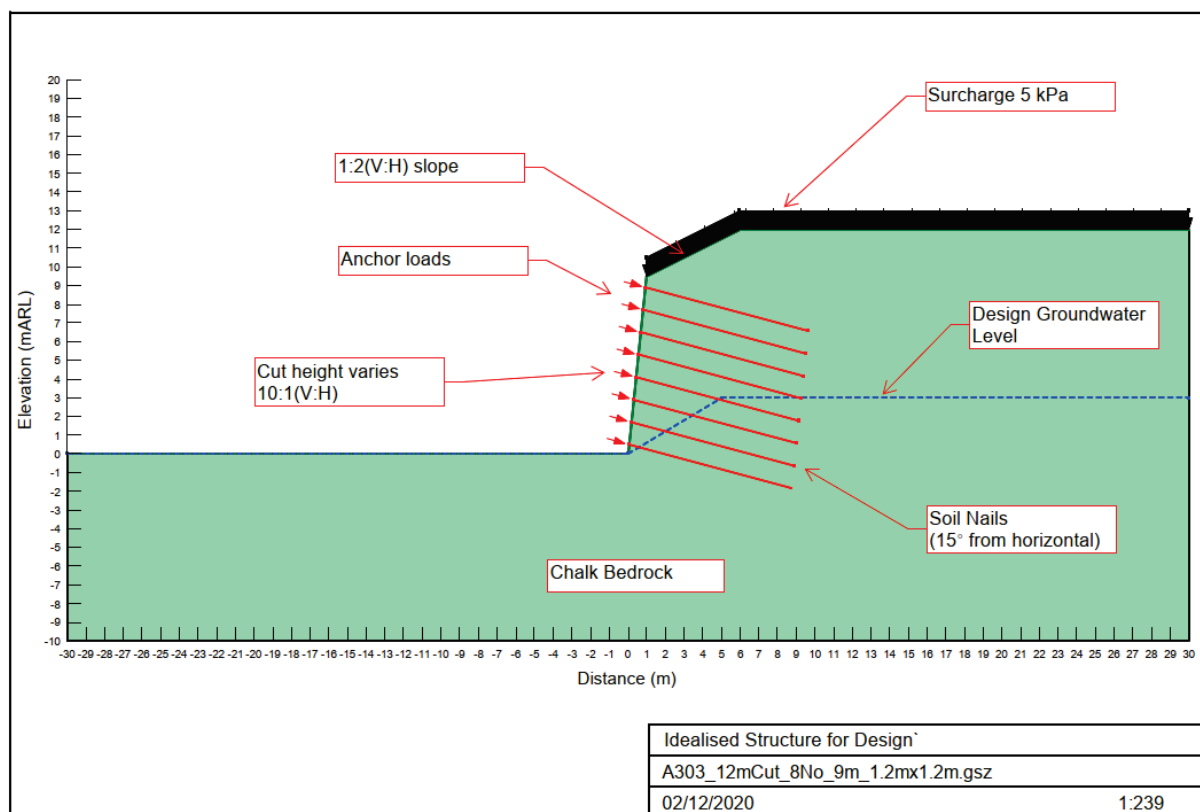


Figure 5-2-1: Idealised Model

For the retaining wall section design the structure was analysed in SAP 2000 Version 21 with the idealised structures as shown below. It was assumed there is no structural connection



between the in situ concrete wall and the soil nail wall. As the soil nail wall is not a water retaining structure a hydrostatic load was applied to the in situ concrete wall, for sensitivity the model was ran with maximum and no water loading to determine the worst case.

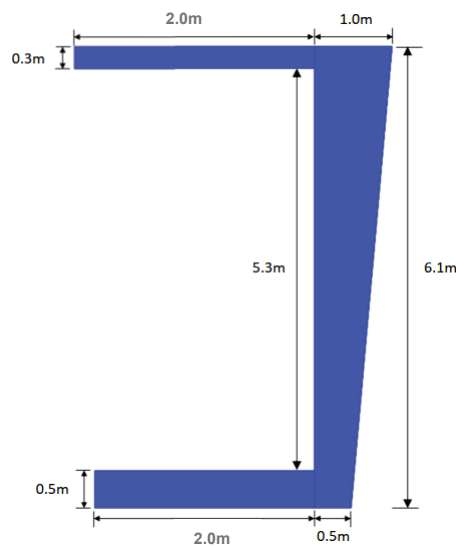


Figure 5-3-2: Retaining Wall Idealised Structure for SAP model

5.3 Assumptions intended for calculation of structural element stiffness

Concrete section properties will be based on the gross, uncracked concrete cross-section.

The stiffness of soil nails will be based on the gross cross section properties making allowance for predicted losses due to corrosion at the end of the structure's working life.

5.4 Proposed range of soil parameters to be used in the design of earth retaining elements

Refer to **Appendix B** for preliminary soil design parameters.

6. GEOTECHNICAL CONDITIONS

6.1 Acceptance of recommendations of the ground investigation report (reference/dates) to be used in the design and reasons for any proposed changes

Relevant information from the above reports and drawings were used to determine a preliminary design ground model and soil parameters for design. Assessed preliminary design ground model and soil parameters are included in **Appendix B**.

6.2 Summary of design for highway structure in the ground investigation report

Refer to **Appendix B** for preliminary soil design parameters.

6.3 Differential settlement to be allowed for in the design of the structure

At the transition between the cut and cover tunnel and the approach structure there will be a change in foundation type as the concrete base slab stops and conventional highway pavement construction begins.



At this location the highway foundation design will have to be carefully considered to minimise the potential for differential settlement due to consolidation of the highway foundation. As long as the foundations are designed and constructed to minimise this the risk of differential settlement is assessed as being low, as both sections will be founded on competent chalk.

For design purposes a maximum allowable differential settlement of 12mm will be assumed, this is based on limiting the angular distortion along a 12m concrete wall panel to 1/1000, to avoid cracking or visual damage. Other limits (such as between adjacent panels of the walls) are anticipated to be tighter, so this will be the maximum value and local structures may have more onerous limits as determined during detailed design.

6.4 If the ground investigation report is not yet available, state when the results are expected and list the sources of information used to justify the preliminary choice of foundations¹³

N/A

7. CHECK

7.1 Proposed category and design supervision level

The soil nail design will be Category 3 and Design Supervision Level 2 following the project detail design award. Prior to this, internal checking and reviewing procedures will be adhered to.

7.2 If category 3, name of proposed independent checker

To be appointed following the project detail design award.

7.3 Erection proposals or temporary works for which types S and P proposals will be required, listing structural parts of the permanent structure affected with reasons

Not Applicable.

8. DRAWINGS AND DOCUMENTS

8.1 List of drawings (including numbers) and documents accompanying the submission¹⁴

Table 8- 1: List of Drawings

No.	Title
HE551506-BGR-STU-SWSREP0Z-DR-S-0001	LONG SECTION ALONG THE EASTBOUND CARRIAGEWAY FACING NORTH
HE551506-BGR-STU-SWSREP0Z-DR-S-0002	LONG SECTION ALONG THE WESTBOUND CARRIAGEWAY FACING NORTH
HE551506-BGR-STU-SWSREP0Z-DR-S-0003	EASTERN TUNNEL APPROACH SHEET 1 OF 4
HE551506-BGR-STU-SWSREP0Z-DR-S-0004	EASTERN TUNNEL APPROACH SHEET 2 OF 4
HE551506-BGR-STU-SWSREP0Z-DR-S-0005	EASTERN TUNNEL APPROACH SHEET 3 OF 4
HE551506-BGR-STU-SWSREP0Z-DR-S-0006	EASTERN TUNNEL APPROACH SHEET 4 OF 4

9. THE ABOVE IS SUBMITTED FOR ACCEPTANCE

We confirm that details of the temporary works design will be/have been¹⁵ passed to the permanent works designer for review.¹⁶



Signed _____
Name _____ Design Team Leader
Engineering Qualifications _____¹⁷
Name of Organisation _____
Date _____

Signed _____
Name _____ Check Team Leader
Engineering Qualifications _____¹⁷
Name of Organisation _____
Date _____

10. THE ABOVE IS REJECTED/AGREED¹⁵ SUBJECT TO THE AMENDMENTS AND CONDITIONS SHOWN BELOW¹⁸

Signed _____
Name _____
Position held _____
Engineering Qualifications _____¹⁷
TAA _____
Date _____

Notes

¹ For a bridge, give over and/or under.

² Include weight, height, width and any environmental restrictions at or adjacent to the bridge.

³ The design working life of the structure, including temporary structure, and replaceable structural parts should be given. They should be expressed as a number of years rather than a range of years. A design working life should be based on the DMRB if stated. Otherwise it may be based on the guidance given in the Overseeing Organisation's current requirements for the use of Eurocodes for the design of highway structures.

⁴ State the classes and levels for the whole structure, as well as those for the individual structural elements if higher or lower. See the Overseeing Organisation's current requirements for the use of Eurocodes for the design of highway structures.

⁵ For concrete structures, give applicable exposure classes for particular structural elements. For all material strengths given, list the relevant codes/standards.

⁶ Designers should confirm that they have reviewed the risks and hazards identified in the AIP and are satisfied. Also see clause 2.27.

⁷ e.g., Load Models 1 and 2, BS EN 1991-2 [Ref 4.N]

⁸ e.g., SV model vehicle in Load Model 3, BS EN 1991-2 [Ref 4.N]

⁹ e.g., SOV model vehicle in Load Model 3, BS EN 1991-2 [Ref 4.N] and /or individual vehicle which includes the following information as applicable:

▮ gross weight of the vehicle in tonnes and vehicle type and number;

▮ axle load and spacing (longitudinally and transversely);

▮ air cushion in tonnes over area applied (in metres, longitudinally and transversely);

▮ single or twin tyres and wheel contact areas.

¹⁰ If in doubt, the heavy or high load route requirements should be confirmed by the relevant administration e.g., Abnormal Indivisible Load team in Highways England. ¹¹ e.g., seismic action, atmospheric icing, floating debris etc.



¹² List the main structural elements for superstructure, substructure and foundation. If the designs of the superstructure, substructure and/or foundation are carried out by different teams, refer to clause 2.84.

¹³ When the ground investigation report becomes available, an addendum to the AIP, covering section 6, is to be submitted to the TAA. The addendum is to have its own sections 8, 9 and 10 to provide a list of drawings, documents and signatures.

¹⁴ Include, without limitation:

- technical approval schedule (TAS);
- general arrangement drawing;
- relevant extracts from the ground investigation report;
- departures;
- relevant correspondence and documents from consultations.

¹⁵ Delete as appropriate.

¹⁶ This statement is applicable to temporary works design AIP only.

¹⁷ CEng MICE, CEng MStructE or equivalent.

¹⁸ AIP is valid for three years after the date of agreement by the TAA. If the construction has not yet commenced within this period, the AIP is to be re-submitted to the TAA for review.



Appendix A – Technical Appraisal Schedule (TAS)

Eurocodes and associated UK National Annexes			
Eurocode part	Title	Amendment / Corrigenda	Notes
Eurocode 0	Basis of structural design		
BS EN 1990:2002 +A1:2005	Eurocode 0: Basis of structural design	+A1:2005 Incorporating corrigenda December 2008 and April 2010	See CD 350 section 7 for additional guidance.
NA to BS EN 1990:2002 + A1:2005	UK National Annex to Eurocode 0 Basis of structural design	National Amendment No.1	See CD 350 section 7 for additional guidance.
Eurocode 1	Actions on structures		
BS EN 1991-1-1:2002	Eurocode 1: Actions on structures. General Actions. Densities, self-weight, imposed load for buildings	Corrigenda December 2004 and March 2009	
NA to BS EN 1991-1- 1:2002	UK National Annex to Eurocode 1: Actions on structures. General Actions. Densities, self-weight, imposed load for buildings	Corrigenda July 2019	
BS EN 1991-1-3:2003 +A1:2015	Eurocode 1: Actions on structures. General Actions. Snow loads	+A1:2015 Incorporating corrigenda December 2004 and March 2009	
NA + A2:18 to BS EN 1991-1-3:2003+A1:2015	UK National Annex to Eurocode 1: Actions on structures. General Actions. Snow loads	+A2:2018 Incorporating corrigenda June 2007, December 2015 and October 2018	
BS EN 1991-1-4:2005 +A1:2010	Eurocode 1: Actions on structures. General Actions. Wind actions	+A1:2010 Corrigenda July 2009 and January 2010	
NA to BS EN 1991-1- 4:2005 + A1:2010	UK National Annex to Eurocode 1: Actions on structures. General Actions. Wind actions	National Amendment No.1	
BS EN 1991-1-5:2003	Eurocode 1: Actions on structures. General Actions. Thermal actions	Corrigenda December 2004 and March 2009	
NA to BS EN 1991-1- 5:2003	UK National Annex to Eurocode 1: Actions on structures. General Actions. Thermal actions	-	



Eurocodes and associated UK National Annexes			
Eurocode part	Title	Amendment / Corrigenda	Notes
BS EN 1991-1-6:2005	Eurocode 1: Actions on structures. General Actions. Actions during execution	Corrigenda July 2008, November 2012 and February 2013	
NA to BS EN 1991-1-6:2005	UK National Annex to Eurocode 1: Actions on structures. General Actions. Actions during execution	-	
BS EN 1991-1-7:2006 +A1:2014	Eurocode 1: Actions on structures. General Actions. Accidental actions	+A1: 2014 Corrigendum February 2010	
NA+A1 to BS EN 1991-1-7:2006+A1:2014	UK National Annex to Eurocode 1: Actions on structures. Part 1-7 : Accidental actions	+A1:2014 Incorporating corrigenda August 2014 and November 2015	See CD 350 for additional guidance.
BS EN 1991-2:2003	Eurocode 1: Actions on structures. Traffic loads on bridges	Corrigenda December 2004 and February 2010	See CD 350 section 7 for additional guidance.
NA +A1:2020 to BS EN 1991-2:2003	UK National Annex to Eurocode 1: Actions on structures. Traffic loads on bridges	Corrigendum No.1 Amendment June 2020	See CD 350 section 7 for additional guidance.
Eurocode 2		Design of concrete structures	
BS EN 1992-1-1:2004 + A1:2014	Eurocode 2: Design of concrete structures– Part 1-1: General rules and rules for buildings	Incorporating corrigendum January 2008, November 2010 and January 2014	
NA + A2:2014 to BS EN 1992-1-1:2004 + A1:2014	UK National Annex to Eurocode 2: Design of concrete structures – Part 1-1: General rules and rules for buildings		
BS EN 1992-2:2005	Eurocode 2: Design of concrete structures – Part 2: Concrete bridges – Design and detailing rules	Corrigendum July 2008	
NA to BS EN 1992-2:2005	UK National Annex to Eurocode 2: Design of concrete structure – Part 2: Concrete bridges – Design and detailing rules	-	
BS EN 1992-3:2006	Eurocode 2: Design of concrete structures – Part 3: Liquid retaining and containment structures	-	
NA to BS EN 1992-3:2006	UK National Annex to Eurocode 2: Design of concrete structures – Part 3: Liquid retaining and containment structures	-	



Eurocodes and associated UK National Annexes			
Eurocode part	Title	Amendment / Corrigenda	Notes
BS EN 1992-4:2018	Eurocode 2: Design of concrete structures — Part 4: Design of fastenings for use in concrete		
NA to BS EN 1992-4:2018	UK National Annex to Eurocode 2: Design of concrete structures — Part 4: Design of fastenings for use in concrete		
Eurocode 3	Design of steel structures		
BS EN 1993-1-1:2005 + A1:2014	Eurocode 3: Design of steel structures — Part 1-1 General rules and rules for buildings	Corrigenda February 2006 and April 2009	
NA + A1:2014 to BS EN 1993-1-1:2005 + A1:2014	UK National Annex to Eurocode 3: Design of steel structures — Part 1-1 General rules and rules for buildings	-	
BS EN 1993-1-3:2006	Eurocode 3: Design of steel structures — Part 1-3 General rules — Supplementary rules for cold-formed members and sheeting	Corrigendum November 2009	
NA to BS EN 1993-1-3:2006	UK National Annex to Eurocode 3: Design of steel structures — Part 1-3 Supplementary rules for cold-formed members and sheeting	-	
BS EN 1993-1-4:2006 + A1:2015	Eurocode 3: Design of steel structures — Part 1-4 General rules — Supplementary rules for stainless steels	+ A1:2015 Amendment No. 1	
NA+A1:15 to BS EN 1993-1-4:2006+A1:2015	UK National Annex to Eurocode 3: Design of steel structures — Part 1-4 Supplementary rules for stainless steels	+ A1:2015 Amendment No. 1	
BS EN 1993-1-5:2006+A2:2019	Eurocode 3: Design of steel structures — Part 1-5 Plated structural elements	Corrigendum April 2009, +A1:2017 Amendment No. 2, +A2:2019	
NA+A1:2016 to BS EN 1993-1-5:2006	UK National Annex to Eurocode 3: Design of steel structures — Part 1-5 Plated structural elements	+ A1:2016 Amendment No. 1	
BS EN 1993-1-6:2007+ A1:2017	Eurocode 3: Design of steel structures — Part 1-6 Strength and stability of shell structures	+ A1:2017 Amendment No. 1	
BS EN 1993-1-7:2007	Eurocode 3: Design of steel structures — Part 1-7 Plated structures subject to out of plane loading	Corrigendum April 2009	



Eurocodes and associated UK National Annexes			
Eurocode part	Title	Amendment / Corrigenda	Notes
BS EN 1993-1-8:2005	Eurocode 3: Design of steel structures — Part 1-8 Design of joints	Corrigenda December 2005, September 2006, July 2009 and August 2010	
NA to BS EN 1993-1-8:2005	UK National Annex to Eurocode 3: Design of steel structures — Part 1-8 Design of joints	-	
BS EN 1993-1-9:2005	Eurocode 3: Design of steel structures — Part 1-9 Fatigue	Corrigenda December 2005, September 2006 and April 2009	
NA to BS EN 1993-1-9:2005	UK National Annex to Eurocode 3: Design of steel structures — Part 1-9 Fatigue	-	
BS EN 1993-1-10:2005	Eurocode 3: Design of steel structures — Part 1-10 Material toughness and through-thickness properties	Corrigenda December 2005, September 2006 and March 2009	
NA to BS EN 1993-1-10:2005	UK National Annex to Eurocode 3: Design of steel structures — Part 1-10 Material toughness and through thickness properties	-	
BS EN 1993-1-11:2006	Eurocode 3: Design of steel structures — Part 1-11 Design of structures with tension components	Corrigendum April 2009	
NA to BS EN 1993-1-11:2006	UK National Annex to Eurocode 3: Design of steel structures — Part 1-11 Design of structures with tension components	-	
BS EN 1993-1-12:2007	Eurocode 3: Design of steel structures — Part 1-12 Additional rules for the extension of EN 1993 up to steel grades S 700	Corrigendum April 2009	
NA to BS EN 1993-1-12:2007	UK National Annex to Eurocode 3: Design of steel structures — Part 1-12 Additional rules for the extension of EN 1993 up to steel grades S 700	-	
BS EN 1993-2:2006	Eurocode 3: Design of steel structures — Part 2 Steel bridges	Corrigendum July 2009	
NA + A1:2012 to BS EN 1993-2:2006	UK National Annex to Eurocode 3: Design of steel structures — Part 2 Steel bridges	+ A1:2012	
BS EN 1993-5:2007	Eurocode 3: Design of steel structures — Part 5 Piling	Corrigendum May 2009	



Eurocodes and associated UK National Annexes			
Eurocode part	Title	Amendment / Corrigenda	Notes
NA + A1:2012 to BS EN 1993-5:2007	UK National Annex to Eurocode 3: Design of steel structures – Part 5 Piling	+ A1:2012	
Eurocode 4	Design of composite steel and concrete structures		
BS EN 1994-1-1:2004	Eurocode 4: Design of composite steel and concrete structures – Part 1-1 General rules and rules for buildings	Corrigendum April 2009	
NA to BS EN 1994-1-1:2004	UK National Annex to Eurocode 4: Design of composite steel and concrete structures – Part 1-1 General rules and rules for buildings	-	
BS EN 1994-2:2005	Eurocode 4: Design of composite steel and concrete structures – Part 2 General rules and rules for bridges	Corrigendum July 2008	
NA to BS EN 1994-2:2005	UK National Annex to Eurocode 4: Design of composite steel and concrete structures – Part 2 General rules and rules for bridges	-	
Eurocode 5	Design of timber structures		
BS EN 1995-1-1:2004 + A2:2014	Eurocode 5: Design of timber structures – Part 1-1 General – common rules and rules for buildings	+ A2:2014 Incorporating corrigendum June 2006	
NA to BS EN 1995-1-1:2004 + A2:2014	UK National Annex to Eurocode 5: Design of timber structures – Part 1-1 General – common rules and rules for buildings	+ A2:2014	
BS EN 1995-2:2004	Eurocode 5: Design of timber structures – Part 2 Bridges	-	
NA to BS EN 1995-2:2004	UK National Annex to Eurocode 5: Design of timber structures – Part 2 Bridges	-	
Eurocode 6	Design of masonry structures		
BS EN 1996-1-1:2005+A1:2012	Eurocode 6: Design of masonry structures – Part 1-1 General rules for reinforced and unreinforced masonry structures	+A1:2012 Corrigenda February 2006 and July 2009	
NA to BS EN 1996-1-1:2005+A1:2012	UK National Annex to Eurocode 6: Design of masonry structures – Part 1-1 General rules for reinforced and unreinforced masonry structures	+A1:2012	



Eurocodes and associated UK National Annexes			
Eurocode part	Title	Amendment / Corrigenda	Notes
BS EN 1996-2:2006	Eurocode 6: Design of masonry structures — Part 2 Design considerations, selection of materials and execution of masonry	Corrigendum September 2009	
NA to BS EN 1996-2:2006	UK National Annex to Eurocode 6: Design of masonry structures — Part 2 Design considerations, selection of materials and execution of masonry	Corrigendum No.1	
BS EN 1996-3:2006	Eurocode 6: Design of masonry structures — Part 3 Simplified calculation methods for unreinforced masonry structures	Corrigendum October 2009	
NA +A1:2014 to BS EN 1996-3:2006	UK National Annex to Eurocode 6: Design of masonry structures — Part 3 Simplified calculation methods for unreinforced masonry structures	+A1:2014	
Eurocode 7	Geotechnical design		
BS EN 1997-1:2004+A1:2013	Eurocode 7: Geotechnical design – Part 1 General rules	+A1:2013 Corrigendum February 2009	
NA+A1:2014 to BS EN 1997-1:2004+A1:2013	UK National Annex to Eurocode 7: Geotechnical design – Part 1 General rules	+A1:2013 Incorporating Corrigendum No.1	
BS EN 1997-2:2007	Eurocode 7: Geotechnical design – Part 2 Ground investigation and testing	Corrigendum June 2010	
NA to BS EN 1997-2:2007	UK National Annex to Eurocode 7: Geotechnical design – Part 2 Ground investigation and testing	-	
Eurocode 8	Design of structures for earthquake resistance		
BS EN 1998-1:2004 + A1:2013	Eurocode 8: Design of structures for earthquake resistance — Part 1 General rules, seismic actions and rules for buildings	Corrigendum June 2009, January 2011 and March 2013	
NA to BS EN 1998-1:2004	UK National Annex to Eurocode 8: Design of structures for earthquake resistance — Part 1 General rules, seismic actions and rules for buildings	-	
BS EN 1998-2:2005+A2:2011	Eurocode 8: Design of structures for earthquake resistance — Part 2 Bridges	Corrigenda February 2010 and February 2012	



Eurocodes and associated UK National Annexes			
Eurocode part	Title	Amendment / Corrigenda	Notes
NA to BS EN 1998-2:2005	UK National Annex to Eurocode 8: Design of structures for earthquake resistance — Part 2 Bridges	-	
BS EN 1998-5:2004	Eurocode 8: Design of structures for earthquake resistance — Part 5 Foundations, retaining structures and geotechnical aspects	-	
NA to BS EN 1998-5:2004	UK National Annex to Eurocode 8: Design of structures for earthquake resistance — Part 5 Foundations, retaining structures and geotechnical aspects	-	
Eurocode 9	Design of aluminium structures		
BS EN 1999-1-1:2007 + A2:2013	Eurocode 9: Design of aluminium structures — Part 1-1 General structural rules	+ A2:2013 Incorporating corrigendum March 2014	
NA to BS EN 1999-1-1:2007 + A1:2009	UK National Annex to Eurocode 9: Design of aluminium structures — Part 1-1 General structural rules	National Amendment No.1 Corrigendum No.1	
BS EN 1999-1-3:2007 + A1:2011	Eurocode 9: Design of aluminium structures — Part 1-3 Structures susceptible to fatigue	+ A1:2011	
NA to BS EN 1999-1-3:2007 + A1:2011	UK National Annex to Eurocode 9: Design of aluminium structures — Part 1-3 Structures susceptible to fatigue	+ A1:2011	
BS EN 1999-1-4:2007 + A1:2011	Eurocode 9: Design of aluminium structures — Part 1-4 Cold formed structural sheeting	+ A1:2011 Corrigendum November 2009	
NA to BS EN 1999-1-4:2007	UK National Annex to Eurocode 9: Design of aluminium structures — Part 1-4 Cold formed structural sheeting	-	
Bsi Published Documents			
<i>For guidance only unless clauses are otherwise specified in CD 350 Appendix A.</i>			
Published Document reference	Title	Notes	



Eurocodes and associated UK National Annexes			
Eurocode part	Title	Amendment / Corrigenda	Notes
PD 6687-1:2020	Background paper to the UK National Annexes to BS EN 1992-1 and BS EN 1992-3	Supersedes PD 6687-1:2010 See CD 350 clauses 3.6, 4.1, 4.2 and Appendix A for additional guidance. Clause 3.6 in CD 350 refers to clause 2.5 in PD 6687-1, this is now clause 4.5 in PD 6687-1 Clause 4.2 in CD 350 refers to clause 2.22 in PD 6687-1, this is now clause 4.21.4 in PD 6687-1	
PD 6687-2:2008	Recommendations for the design of structures to BS EN 1992-2:2005	See CD 350 clauses 4.1, 4.2 and Appendix A for additional guidance.	
PD 6688-1-1:2011	Recommendations for the design of structures to BS EN 1991-1-1	See CD 350 Appendix A for additional guidance.	
PD 6688-1-4:2015	Background paper to the UK National Annex to BS EN 1991-1-4	See CD 350 Appendix A for additional guidance.	
PD 6688-1-7:2009 + A1:2014	Recommendations for the design of structures to BS EN 1991-1-7	See CD350 clause 3.7 and Appendix B for additional guidance.	
PD 6688-2:2011	Recommendations for the design of structures to BS EN 1991-2	See CD 350 Appendix A for additional guidance.	
PD 6694-1:2011 + A1:2020	Recommendations for the design of structures subject to traffic loading to BS EN 1997-1	See CD 350 Appendix A for additional guidance. Amended 27 May 2020 (Temporarily withdrawn due to technical errors)	
PD 6695-1-9:2008	Recommendations for the design of structures to BS EN 1993-1-9	See CD 350 Appendix A for additional guidance.	
PD 6695-1-10:2009	Recommendations for the design of structures to BS EN 1993-1-10	See CD 350 Appendix A for additional guidance.	
PD 6695-2:2008 + A1:2012 Incorporating Corrigendum No.1	Recommendation for the design of bridges to BS EN 1993	See CD 350 Appendix A for additional guidance.	
PD 6696-2:2007 + A1:2012	Background paper to BS EN 1994-2 and the UK National Annex to BS EN 1994-2	See CD 350 Appendix A for additional guidance.	
PD 6698:2009	Recommendations for the design of structures for earthquake resistance to BS EN 1998	See CD 350 section 7 for additional guidance.	
PD 6702-1:2009+A1:2019	Structural use of aluminium. Recommendations for the design of aluminium structures to BS EN 1999	Amended 31 May 2019	
PD 6703:2009	Structural bearings — Guidance on the use of structural bearings		



Eurocodes and associated UK National Annexes			
Eurocode part	Title	Amendment / Corrigenda	Notes
PD 6705-2:2020	Structural use of steel and aluminium. Execution of steel bridges conforming to BS EN 1090-2. Guide	Replaces PD 6705-2:2010 + A1:2013	
PD 6705-3:2009	Recommendations on the execution of aluminium structures to BS EN 1090-3		

Execution Standards referenced in British Standards or Eurocodes		
Execution Standard reference	Title	Notes
BS EN 1090-1:2009+A1:2011	Execution of steel structures and aluminium structures – Part 1: Requirements for conformity assessment of structural components	
BS EN 1090-2:2018	Execution of steel structures and aluminium structures. Technical requirements for the execution of steel structures	Supersedes BS EN 1090-2:2008+A1:2011
BS EN 1090-3:2019	Execution of steel structures and aluminium structures – Part 3: Technical requirements for aluminium structures	Supersedes BS EN 1090-3:2008
BS EN 13670:2009 Incorporating corrigenda October 2015 and November 2015	Execution of concrete structures	

Product Standards referenced in British Standards or Eurocodes		
Product Standard reference	Title	Notes
BS EN 206:2013+A1:2016	Concrete – Specification, performance, production and conformity	+A1:2016
BS EN 1317-1:2010	Road Restraint Systems – Part 1 – Terminology and general criteria for test methods	
BS EN 1317-2:2010	Road Restraint Systems – Part 2 – Performance classes, impact test acceptance criteria and test methods for safety barriers.	



Product Standards referenced in British Standards or Eurocodes		
Product Standard reference	Title	Notes
BS EN 1317-3:2010	Road Restraint Systems – Part 3 – Performance classes, impact test acceptance criteria and test methods for crash cushions.	
DD ENV 1317-4:2002	Road Restraint Systems – Part 4 – Performance classes, impact test acceptance criteria and test methods for terminals and transitions of safety barriers.	<i>Draft BS EN 1317-4 for public comment published in June 2012</i>
BS EN 1317-5:2007+A2:2012	Road Restraint Systems – Part 5 - Product requirements and evaluation of conformity for vehicle restraint systems	Incorporating corrigendum August 2012 <i>Draft prEN 1317-5 for public comment published in December 2013</i>
PD CEN/TR 16949:2016	Road Restraint System – Pedestrian restraint system – Pedestrian parapets	<i>Bsi Published Document / CEN Technical Report published in July 2016</i> <i>(This document should not be used. The requirements of BS 7818:1995 apply.)</i>
Draft prEN 1317-7	Road restraint systems – Part 7: Performance classes, impact test acceptance criteria and test methods for terminals of safety barriers	<i>Draft prEN 1317-7 for public comment published in June 2012</i> <i>(This document should not be used. All terminals should continue to be in accordance with ENV1317-4.)</i>
PD CEN/TS 17342:2019	Road restraint systems – Motorcycle road restraint systems which reduce the impact severity of motorcyclist collisions with safety barriers	<i>Replaces PD CEN/TS 1317-8:2012</i> <i>(This document should not be used.)</i>
PD CEN/TR 17081:2018	Design of fastenings for use in concrete – Plastic design of fastenings with headed and post-installed fasteners	
BS EN 1337-1:2000	Structural bearings – Part 1: General Design Rules	
BS EN 1337-2:2004	Structural bearings – Part 2: Sliding elements	
BS EN 1337-3:2005	Structural bearings – Part 3: Elastomeric bearings	
BS EN 1337-4:2004	Structural bearings – Part 4: Roller bearings	Corrigendum No.1 March 2007



Product Standards referenced in British Standards or Eurocodes		
Product Standard reference	Title	Notes
BS EN 1337-5:2005	Structural bearings — Part 5: Pot bearings	
BS EN 1337-6:2004	Structural bearings — Part 6: Rocker bearings	
BS EN 1337-7:2004	Structural bearings — Part 7: Spherical and cylindrical PTFE bearings	
BS EN 1337-8:2007	Structural bearings — Part 8: Guide bearings and restraint bearings	
BS EN 1337-9:1998	Structural bearings — Part 9: Protection	
BS EN 1337-10:2003	Structural bearings — Part 10: Inspection and maintenance	Corrigendum No.1 November 2003
BS EN 1337-11:1998	Structural bearings — Part 11: Transport, Storage and Installation.	
BS EN 10025-1:2004	Hot rolled products of structural steels Part 1: General technical delivery conditions.	
BS EN 10025-2:2019	Hot rolled products of structural steels Part 2: Technical delivery conditions for non-alloy structural steels.	Supersedes BS EN 10025-1:2004
BS EN 10025-3:2019	Hot rolled products of structural steels Part 3: Technical delivery conditions for normalized/normalized rolled weldable fine grain structural steels.	Supersedes BS EN 10025-3:2004
BS EN 10025-4:2019	Hot rolled products of structural steels Part 4: Technical delivery conditions for thermomechanical rolled weldable fine grain structural steels.	Supersedes BS EN 10025-4:2004
BS EN 10025-5:2019	Hot rolled products of structural steels — Part 5: Technical delivery conditions for structural steels with improved atmospheric corrosion resistance	Supersedes BS EN 10025-5:2004



Product Standards referenced in British Standards or Eurocodes		
Product Standard reference	Title	Notes
BS EN 10025-6:2019	Hot rolled products of structural steels — Part 6: Technical delivery conditions for flat products of high yield strength structural steels in the quenched and tempered condition.	Supersedes BS EN 10025-6:2004+A1:2009
BS EN 10080:2005	Steel for the reinforcement of concrete – Weldable reinforcing steel - General	
BS EN 10210-1:2006	Hot finished structural hollow sections of non-alloy and fine grain steels — Part 1: Technical delivery conditions	
BS EN 10210-2:2019	Hot finished structural hollow sections — Part 2: Tolerances, dimensions and sectional properties	Supersedes BS EN 10210-2:2006
BS EN 10248-1:1996	Hot rolled sheet piling of non alloy steels. Technical delivery conditions	
BS EN 10248-2:1996	Hot rolled sheet piling of non alloy steels. Tolerances on shape and dimensions	
BS EN 12063:1999	Execution of special geotechnical work. Sheet pile walls.	
BS EN 14388:2005	Road traffic noise reducing devices	There is a 2015 version, however the 2015 version is not harmonised.
BS EN 15050:2007 + A1:2012	Precast concrete products – Bridge elements	See CD 350 clause 3.8.1 for additional guidance.

British Standards		
British Standard reference	Title	Notes
BS 4449:2005+A3:2016	Steel for the reinforcement of concrete	No longer covers plain round bar. (See BS4482 up to 12mm dia, see BS EN 10025-1 for larger sizes and dowels. See BS EN 13877-3 for dowel bars in concrete pavements.)
BS 5896:2012	Specification for high tensile steel wire and strand for the prestressing of concrete	



British Standards		
BS 7818:1995	Specification for pedestrian restraint systems in metal	Incorporating Corrigendum No.1 May 2004 and Corrigendum No.2 September 2006 Currently the requirements of BS 7818:1995 are to be used instead of PD CEN/TR 16949:2016
BS 8002:2015	Code of practice for earth retaining structures	
BS 8004:2015 +A1 2020	Code of practice for foundations	Amendment +A1:2020
BS 8006-1:2010+A1:2016	Code of practice for strengthened/reinforced soils and other fills	
BS 8006-2:2011+A1:2017	Code of practice for strengthened/reinforced soils. Soil nail design	
BS 8500-1:2015+A2:2019	Concrete – Complementary British Standard to BS EN 206: Method of specifying and guidance for the specifier.	Incorporating Corrigendum No.1 and Corrigendum No.2 June 2020 Amendment +A2:2019
BS 8500-2:2015+A2:2019	Concrete – Complementary British Standard to BS EN 206 : Specification for constituent materials and concrete.	Amendment +A2:2019
BS 8666:2005	Scheduling, dimensioning, bending and cutting of steel reinforcement for concrete	Incorporating Amendment No.1

The Manual Contract Document for Highway Works (MCHW)		
MCHW reference	Title	Notes
MCHW Volume 1: March 2020	Specification for Highway Works	<i>Specification compliant with the execution standards must be used. A Departure is necessary for the parts where a compliant revision has not been published. Amendments March 2020</i>
MCHW Volume 2: March 2020	Notes for guidance on the Specification for Highway Works	<i>Notes for guidance compliant with the execution standards must be used. A Departure is necessary for the parts where</i>



		<i>a compliant revision has not been published. Amendments March 2020</i>
MCHW Volume 3: February 2017	Highway Construction Details	

The Design Manual for Roads and Bridges (DMRB)		
DMRB reference	Title	Notes
GG 101 Revision 0	Introduction to the Design Manual for Roads and Bridges	Replaces GD 01/16
GG 102 Revision 0	Quality Management Systems for Highway Design	Replaces GD 02/16
GG 103 Revision 0	Introduction and general requirements for sustainable development and design	
GG 104 Revision 0	Requirements for Safety Risk Assessment	Replaces GD04/12 and IAN 191/16
GG 184	Specification for the use of Computer Aided Design	Replaces IAN 184/16
CG 300 Revision 0	Technical approval of highway structures	Supersedes BD 2/12
CG 302 Revision 0	As-built, operational and maintenance records for highway structures	Supersedes BD 62/07
CG 303 Revision 0	Quality assurance scheme for paints and similar protective coatings	Supersedes BD 35/14
CG 305 Revision 0	Identification marking of highway structures	Supersedes BD 45/93
CG 501 Revision 2	Design of highway drainage systems	Supersedes HD 33/16, TA 80/99
CD 127 Revision 1	Cross-sections and headrooms	Replaces TD 27/05 and TD 70/08
CD 350 Revision 0	The design of highway structures	Supersedes BD 100/16, BA 57/01, BD 57/01 and IAN 124/11
CD 351 Revision 0	The design and appearance of highway structures	Supersedes BA 41/98
CD 352 Revision 0	Design of road tunnels	Supersedes BD 78/99
CD 353 Revision 0	Design criteria for footbridges	Supersedes BD 29/17
CD 354 Revision 1	Design of minor structures	Supersedes BD 94/17
CD 355 Revision 0	Application of whole-life costs for design and maintenance of highway structures	Replaces BD 36/92 and BA 28/92
CD 356 Revision 1	Design of highway structures for hydraulic action	Supersedes BA 59/94



The Design Manual for Roads and Bridges (DMRB)		
DMRB reference	Title	Notes
CD 357 Revision 1	Bridge expansion joints	Replaces BD 33/94, BA 26/94, IAN 168/12 and IAN 169/12
CD 358 Revision 1	Waterproofing and surfacing of concrete bridge decks	Replaces BD 47/99, BA 47/99 and IAN 96/07
CD 359 Revision 0	Design requirements for permanent soffit formwork	Supersedes BA 36/90 and IAN 131/11
CD 361 Revision 0	Weathering steel for highway structures	Supersedes BD 7/01
CD 362 Revision 1	Enclosure of bridges	Replaces BD 67/96 and BA 67/96
CD 363 Revision 0	Design rules for aerodynamic effects on bridges	Replaces BD 49/01
CD 364 Revision 0	Formation of continuity joints in bridge decks	Replaces BA 82/00
CD 365 Revision 1	Portal and cantilever signs/signals gantries	Replaces BD 51/14, IAN 193/16, BE 7/04
CD 366 Revision 0	Design criteria for collision protection beams	Replaces BD 65/14
CD 368 Revision 0	Design of fibre reinforced polymer bridges and highway structures	Replaces BD 90/05
CD 369 Revision 0	Surface protection for concrete highway structures	Replaces BA 85/04
CD 372 Revision 0	Design of post-installed anchors and reinforcing bar connections in concrete	Supersedes IAN 104/15
CD 373 Revision 0	Impregnation of reinforced and prestressed concrete highway structures using hydrophobic pore-lining impregnants	Supersedes BD 43/03
CD 374 Revision 0	The use of recycled aggregates in structural concrete	Supersedes BA 92/07
CD 375 Revision 1	Design of corrugated steel buried structures	Supersedes BD 12/01
CD 377 Revision 2	Requirements for road restraint systems	Supersedes TD 19/06
CD 622 Revision 1	Managing geotechnical risk	Replaces HD 22/08, BD 10/97 and HA 120/08
CS 461 Revision 0	Assessment and upgrading of in-service parapets	Supersedes BA 37/92 and IAN 97/07
GD 304 Revision 2	Designing health and safety into maintenance	Replaces IAN 69/15
LA 104 Revision 1	Environmental assessment and monitoring	Supersedes HA 205/08, HD 48/08, IAN 125/15, and IAN 133/10
LA 106 Revision 1	Cultural heritage assessment	Supersedes HA 208/07, HA 60/92, HA 75/01



The Design Manual for Roads and Bridges (DMRB)		
DMRB reference	Title	Notes
LA 110 Revision 0	Material assets and waste	Supersedes IAN 153/11
LA 113 Revision 1	Road drainage and the water environment	Supersedes HD 45/09
LD 119 Revision 0	Roadside environmental mitigation and enhancement	Formerly LA 119, which superseded HA 65/94 and HA 66/95
Interim Advice Notes		
IAN reference	Title	Notes
IAN 105/08	Implementation of construction (design and management) 2007 and the withdrawal of SD 10 and SD 11	

Miscellaneous		
Standard reference	Title	Notes
CIRIA C543	Bridge Detailing Guide	
CIRIA C574	Engineering in chalk	
CIRIA C766	Control of cracking caused by restrained deformation in concrete	Supersedes C660
CIRIA C686	Safe Access for Maintenance and Repair	
CIRIA C760	Guidance on embedded retaining wall design	



Appendix B – Geotechnical Design Report Summary

GEOTECHNICAL ASSESSMENT SHEET																		
Project: A303 Amesbury to Berwick Down		Rev: 2	Calc No: GAS/001/R0															
Structure Name: Soil Nail Cuttings (East and West Approaches and Portals)			Date: February 2021															
Prepared: DW	Checked: AD	Reviewed: AD	Job No: B2390300															
Exploratory Holes: Western Approach Ch. 6600 to 7200 16174-SSTP49, 16174-SSTP50, 16174-SSTP51, 21762-STP134 Western Portal Ch. 7200 to 7400 16174-SSTP52, 16174-DTP14, 16174-DTP15 Eastern Portal Ch. 10400 to 10500 R507A, 16174-DTP34, 16174-R24 Eastern Approach Ch. 10500 to 10700 16174-STP55, 16174-STP56		References: i. Jacobs UK Ltd. (2020) A303 Amesbury to Berwick Down – Exploratory Hole Location Plan and Geological Long Section, Drawing No. HE551506-BGR-GEN-SWMLM00Z-DR-GE-0008 ii. A303 Tender – Tunnel Ground Model Technical Note iii. Mott MacDonald (2001) Site Interpretative Investigation Report: Phase I Main Ground Investigation, Report No. 57334/UWG/REP/STONEHENGE/INTPII/B/October 2001 iv. Mott MacDonald (2002) Site Interpretative Investigation Report: Phase II Main Ground Investigation, Report No. 57334/UWG/REP/STONEHENGE/INTPII/B/April 2002 v. Balfour Beatty-Costain JV and Halcrow-Gifford JV (2006) A303 Stonehenge Improvement Preliminary Geotechnical Report, Report No. P1A-GEO-GEN-R002C. vi. Arup Atkins JV (2016) A303 Amesbury to Berwick Down, Preliminary Sources Study Report, Report No. HE551506-AA-HGT-SWI-RP-CX-000004. vii. Highways England (2018) A303 Amesbury to Berwick Down 6.3 Environmental Statement Appendices: Appendix 10.1 Preliminary Ground Investigation Report, Report No. TR010025-000426-6-3. viii. A303 Stonehenge – Phase 6 and 7 Ground Investigation – Final Factual Report on Ground Investigation (2019). ix. Ground Investigation Phase 7A (i) Report (2019). x. CIRIA (2002) Engineering in Chalk. CIRIA: London.																
<p><u>Proposed Structure:</u></p> <p>The current proposal is to construct permanent soil nails, along the western and eastern approaches and portals to the new bored tunnel on the A303, to stabilise the slope faces. The slope faces will be inclined at 10:1 (V:H) (approx. 84°) and the soil nails will consist of 32mm diameter galvanized high yield steel self drilling hollow bars, grouted into 100mm diameter holes, inclined at 15° from the horizontal. Although the nails are galvanised, an additional 2mm corrosion allowance over the design life of the structure has been included giving a diameter of 28mm. This will be reviewed during the next phase of the design. The length of the soil nails will vary based on the slope height. In addition, there is an average 2.5m high, 1:2 (V:H) back slope that is present above the soil nailed face.</p> <p><u>Existing Ground Level:</u></p> <p>The existing ground levels were obtained from topography and relevant boreholes approximately located along the proposed carriageway. The proposed carriageway level and existing ground level is as follows:</p> <table border="1" style="width: 100%; border-collapse: collapse; margin-top: 10px;"> <thead> <tr> <th style="width: 33%;">Section</th> <th style="width: 33%;">Existing Ground Level</th> <th style="width: 33%;">Proposed Carriageway Level</th> </tr> </thead> <tbody> <tr> <td>Western Approach</td> <td>~101mAOD to 98mAOD</td> <td>~90mAOD to 87mAOD</td> </tr> <tr> <td>Western Portal</td> <td>~98mAOD to 102mAOD</td> <td>~87mAOD to 85mAOD</td> </tr> <tr> <td>Eastern Portal</td> <td>~ 94mAOD to 90mAOD</td> <td>~78mAOD to 79mAOD</td> </tr> <tr> <td>Eastern Approach</td> <td>~ 90mAOD to 85mAOD</td> <td>~79mAOD to 83mAOD</td> </tr> </tbody> </table> <p style="margin-top: 20px;"><u>Ground Conditions and Models</u></p> <p>Western Approach</p> <p>Estimated from exploratory holes: 16174-SSTP49, 16174-SSTP50, 16174-SSTP51 and 21762-STP134 which are all offset from the proposed carriageway.</p>				Section	Existing Ground Level	Proposed Carriageway Level	Western Approach	~101mAOD to 98mAOD	~90mAOD to 87mAOD	Western Portal	~98mAOD to 102mAOD	~87mAOD to 85mAOD	Eastern Portal	~ 94mAOD to 90mAOD	~78mAOD to 79mAOD	Eastern Approach	~ 90mAOD to 85mAOD	~79mAOD to 83mAOD
Section	Existing Ground Level	Proposed Carriageway Level																
Western Approach	~101mAOD to 98mAOD	~90mAOD to 87mAOD																
Western Portal	~98mAOD to 102mAOD	~87mAOD to 85mAOD																
Eastern Portal	~ 94mAOD to 90mAOD	~78mAOD to 79mAOD																
Eastern Approach	~ 90mAOD to 85mAOD	~79mAOD to 83mAOD																

GEOTECHNICAL ASSESSMENT SHEET

Project: A303 Amesbury to Berwick Down	Rev: 2	Calc No: GAS/001/R0
Structure Name: Soil Nail Cuttings (East and West Approaches and Portals)		Date: February 2021
Prepared: DW	Checked: AD	Reviewed: AD
Job No: B2390300		

Table 1: Stratigraphy for Western Approach

Stratum	Elevation to top of stratum (mAOD)	Depth to top of stratum (mBGL)	Thickness (m)	Description
Structureless Chalk (Dc)	95.8	0.0	1.5	Granular chalk soil
Structureless Chalk (Dm)	94.3	1.5	>1.1 ¹	Cohesive chalk soil
Weathered Chalk	95.5 to 96.2	0.0 ²	0.4 to 0.7	Chalk rock/soil
Structured Chalk	95.1 to 97.3	0.0 ² to 0.7	>1.2 to >1.6	Chalk rock

Notes

¹The exploratory holes noted for the Western Approach were relatively shallow and in some cases the Chalk Rock was not encountered.

²Where the borehole is off-centre from the proposed carriageway, the ground level along the alignment is much lower than the borehole elevation and so the stratum appears to be at "Ground Level".

Western Portal

Estimated from exploratory holes: 16174-SSTP52, 16174-DTP14 and 16174-DTP15 which are all offset from the proposed carriageway.

Table 2: Stratigraphy for Western Portal

Stratum	Elevation to top of stratum (mAOD)	Depth to top of stratum (mBGL)	Thickness (m)	Description
Topsoil	97.2 to 100.2	0.1 to 0.9 ¹	0.2	Topsoil
Structureless Chalk (Dc)	95.5 to 100.0	0.0 to 1.1	0.8 to 1.4	Granular chalk soil
Weathered Chalk	94.7 to 99.2	0.8 to 3.2	0.5 to >1.9	Chalk rock/soil
Structured Chalk	94.1 to 98.7 ²	1.4 to 1.6	1.5 ³ to >3.2	Chalk rock

Notes

¹The geological cross section indicates that some of the borehole elevations were below the ground level and this is due to the offset of these holes from the proposed alignment.

²DTP15 indicates a layer of Competent Chalk between Weathered Chalk

GEOTECHNICAL ASSESSMENT SHEET

Project: A303 Amesbury to Berwick Down		Rev: 2	Calc No: GAS/001/R0
Structure Name: Soil Nail Cuttings (East and West Approaches and Portals)			Date: February 2021
Prepared: DW	Checked: AD	Reviewed: AD	Job No: B2390300

Eastern Portal

Estimated from exploratory holes: R507A, 16174-DTP34 and 16174-R24 which are all offset from the proposed carriageway.

Table 3: Stratigraphy for Eastern Portal

Stratum	Elevation to top of stratum (mAOD)	Depth to top of stratum (mBGL)	Thickness (m)	Description
Weathered Chalk	90.0	0.0	19.6	Chalk rock/soil
Structured Chalk	70.4 to 94.2	0.0 ¹ to 19.6	>0.7 to >15.0	Chalk rock

Notes

¹Where the borehole is off-centre from the proposed carriageway, the ground level along the alignment is much lower than the borehole elevation and so the stratum appears to be at "Ground Level".

Eastern Approach

Estimated from exploratory holes: 16174-STP55 and 16174-STP56 which are all offset from the proposed carriageway.

Table 4: Stratigraphy for Eastern Approach

Stratum	Elevation to top of stratum (mAOD)	Depth to top of stratum (mBGL)	Thickness (m)	Description
Topsoil	82.2	0.5 ¹	0.2	Topsoil
Structureless Chalk (Dc)	80.8	1.9	0.3	Granular chalk soil
Weathered Chalk	80.5	2.2	0.7	Chalk rock/soil
Structured Chalk	79.8 to 86.8	0.0 ² to 2.9	>1.0	Chalk rock

Notes

¹The geological cross section indicates that some of the borehole elevations were below the ground level and this is due to the offset of these holes from the proposed alignment.

²Where the borehole is off-centre from the proposed carriageway, the ground level along the alignment is much lower than the borehole elevation and so the stratum appears to be at "Ground Level".

GEOTECHNICAL ASSESSMENT SHEET

Project: A303 Amesbury to Berwick Down		Rev: 2	Calc No: GAS/001/R0
Structure Name: Soil Nail Cuttings (East and West Approaches and Portals)			Date: February 2021
Prepared: DW	Checked: AD	Reviewed: AD	Job No: B2390300

Groundwater

Groundwater monitoring in the vicinity of the scheme indicates general seasonal variations of between 8m and 10m beneath the dry valleys and around 15m below interfluvial areas (valleys between watercourses).

An assessment was undertaken to identify the groundwater levels from Drought Low levels to Extreme High levels. The Extreme High levels are indicated in the Geological cross section as being beneath the base excavation of the approaches and portals. For the purpose of this assessment, an additional 40% has been added to account for climate change. The groundwater level increased to a maximum of 3.0m above road level.

During the design life of the structure, the groundwater will be allowed to drain through the shotcrete facing to sit between the tanked wall and the shotcrete face of the soil nailed slope. In this instance, the groundwater pressure will be balanced behind the front and the back of the soil nail facing. For the purpose of the soil nail stability assessment, the groundwater level was drawn down from 3.0m above road level down to road level. This approach is conservative as there will be a higher pressure behind the wall than in reality.

Summary of Soil Parameters

Mott MacDonald undertook an interpretation of design parameters for Chalk within their Ground Investigations in 2001. These are given in Table 5.

Table 5: Derived properties for Chalk (Mott MacDonald, 2001)

Stratum	Unit weight of soil, γ (kN/m ³)	Drained cohesion, c' (kPa)	Effective angle of friction, ϕ' (°)	Unconfined Compressive Strength, UCS (MPa)
Cut-and-cover Tunnels				
Chalk	Not given	Not given	35.0	Not given
Bored Tunnels				
Grade IV (Poor Quality)	Not given	0.0	35.0	2.0
Grade III (Reasonable Quality)	Not given	N/A	N/A	2.0
Grade II (Reasonable Quality)	Not given	N/A	N/A	2.0

Further interpretation of parameters was undertaken by Jacobs as part of the Tunnel Ground Model Technical Note. The interpretation takes into consideration ground investigations up to 2018, which include the Balfour Beatty-JV/Halcrow-Gifford JV report (2006), Atkins Arup JV report (2016) and Highways England report (2018), as referenced at the start of this sheet. These parameters are summarised in Table 6.

GEOTECHNICAL ASSESSMENT SHEET

Project: A303 Amesbury to Berwick Down		Rev: 2	Calc No: GAS/001/R0
Structure Name: Soil Nail Cuttings (East and West Approaches and Portals)			Date: February 2021
Prepared: DW	Checked: AD	Reviewed: AD	Job No: B2390300

Table 6: Derived properties for Chalk (Jacobs, 2020)

Stratum	Unit weight of soil, γ (kN/m ³)	Drained cohesion, c' (kPa)	Effective angle of friction, ϕ' (°)
Structureless Chalk (Dm)	19.0 to 21.0	Not given	Not given
Structureless Chalk (Dc)	19.0 to 21.0	Not given	28.6 to 34.8
Structured Chalk	16.0 to 23.0	Not given	38.7 to 42.8

Additional ground investigations, Phase 6, 7 and 7A, were undertaken in 2019 and their associated factual reports, referenced at the start of the sheet, were completed the same year. However, the Ground Investigation Report, discussing the results of the 2019 ground investigation, is yet to be completed. This report will be used for the next stage of the design process.

Ground Model Adopted for Design of Soil Nails

Based on the above ground models, the slope stability assessment was undertaken based on a worst-case full depth of Weathered Chalk material, based on exploratory hole R507A. The Chalk properties given by Mott MacDonald and Jacobs were not extensive. Moderately conservative parameters, in Table 7, were determined by guidance within CIRIA C574 and engineering knowledge based on previous projects undertaken in Chalk. These chosen parameters were then checked against the properties derived in Table 5 and Table 6.

Additionally, a separate slope stability assessment was undertaken for the 2.5m high, 1:2 (V:H) back slope. It was assumed that the full depth of this slope was made up of cohesive Structureless Chalk (Dm).

Table 7: Chalk properties used in slope stability assessments

Stratum	Unit weight of soil, γ (kN/m ³)	Drained cohesion, c' (kPa)	Effective angle of friction, ϕ' (°)
Structureless Chalk (Dm)	20.0	1.0	30.0
Weathered Chalk	20.0	2.0	34.0

Surcharge

A nominal permanent surcharge of 5kPa was applied to the slopes of the retained cut and up to 2.0m from the crest of the slope to account for any pedestrian and light maintenance plant loading. Beyond 2.0m from the crest of the slope, a permanent surcharge of 20kPa was applied, based on the scope provided for the project.

The cut and cover tunnel will be designed to take a 20kPa surcharge across its full extent, including the soil nail walls, in the permanent case (i.e. after the backfill has been placed over the roof slab).

Soil Nail Considerations

The cutting depths of the approaches and portals range from 4.0m to 16.0m. The large variation in range gives rise to the use of several different lengths of soil nail, as well as number of rows, that provide adequate bond resistance to prevent instability of the slopes. The proposed arrangement is given in Table 8.

GEOTECHNICAL ASSESSMENT SHEET

Project: A303 Amesbury to Berwick Down

Rev: 2

Calc No: GAS/001/R0

Structure Name: Soil Nail Cuttings (East and West Approaches and Portals)

Date: February 2021

Prepared: DW

Checked: AD

Reviewed: AD

Job No: B2390300

Table 8: Proposed arrangement of soil nail cutting faces

Total Cutting Height (m)	Facing Height (m)	Number of nails rows	Nail length (m)	Spacing	
				Vertical	Horizontal
16.5	14.0	12	10.0	1.0	1.2
15.5	13.0	11	9.0	1.2 (0.7 Top)	1.2
14.5	12.0	10	9.0	1.2	1.2
13.5	11.0	9	9.0	1.2	1.2
12.5	10.0	8	9.0	1.2	1.2
11.5	9.0	7	8.0	1.2	1.2
10.5	8.0	7	8.0	1.2 (0.7 Top)	1.2
9.5	7.0	6	8.0	1.2	1.2
8.5	6.0	5	7.0	1.2	1.2
7.5	5.0	4	7.0	1.2	1.2
6.5	4.0	3	7.0	1.2	1.2
5.5	3.0	3	6.0	1.2	1.2
4.5	2.0	2	6.0	1.2 (0.7 Top)	1.2

Some of the cutting heights require smaller vertical spacing than 1.2m in the top nail in order to maintain adequate stability in the top of the soil nail face.

The soil nails will be constructed in a diamond formation.

Facing Considerations

It is proposed that the soil nails will be faced with a rigid facing comprised of shotcrete with a reinforced steel mesh.

Construction Issues

An archaeological area that is adjacent to the cutting and runs parallel to the top of the back slope along the approaches and portals, must be avoided when installing the soil nails. There is a minimum required clearance of 4.0m from the top of the back slope cutting to the soil nail.

GEOTECHNICAL ASSESSMENT SHEET			
Project: A303 Amesbury to Berwick Down		Rev: 2	Calc No: GAS/001/R0
Structure Name: Soil Nail Cuttings (East and West Approaches and Portals)			Date: February 2021
Prepared: DW	Checked: AD	Reviewed: AD	Job No: B2390300

Conclusions and Recommendations

- Soil nail lengths vary from 6.0m to 10.0m depending on the cutting depth;
- The number of rows of soil nails varies from 2 to 12 depending on the cutting depth;
- The soil nails will be constructed in a diamond formation;
- An archaeological area, that begins from the top of the back slope cutting, must be avoided when installing the nails. A minimum of 4.0m clearance from the top of the back slope cutting to the soil nail is required; and
- The assessment assumes Weathered Chalk as the full cutting depth, however, it is recommended, at detailed design, to refine the ground model for each relevant chainage and also to review the parameters used for the Chalk. A refinement of the ground model and parameters may allow a reduction in soil nail lengths.



Appendix C – Relaxation and Departure from Standard Submission Form

No departures are anticipated for the eastern cut retaining structural design at this stage.



Appendix D – CDM Designer's Risk Register

Potential hazards and risk have been identified at this early stage and risks will continue to be considered as the design develops. A detailed risk register will be developed during detailed design.

DESIGN HAZARD ELIMINATION AND REDUCTION REGISTER									
--	--	--	--	--	--	--	--	--	--



Project Name	Design Stage	Engineering Discipline	Structure	Date	Document Reference
A303 Amesbury to Berwick Down (Stonehenge)	Tender Design	Geotechnics	Eastern and Western Portals and Retained Cuts	25 November 2020	Quality Submission

Ref.	Phase C/M/D	Activity	Potential Hazards	Risk	Person(s) Affect	L	S	R	Design Measures to Eliminate Hazards	Design Measures to Reduce Risk	Residual risk information to be provided going forward	L	S	R	Included on Drawing/Document No.'s - References
1.0	C	Excavation / Site Preparation	Unidentified/uncharted live services	Injury to site personnel. Damage to existing infrastructure. Damage to plant and equipment. Changes to design	Site personnel	4	4	16	Site Investigation and PAS128 compatible survey Desk Study	Services should be located and manged as far as possible during the pre-construction phase, and Information identified on combined service drawings. Where possible, service diversions or de-energisation should be designed for.	Contractor to undertake appropriate surveys prior to excavation	2	4	8	
2.0	C	Excavation / Site Preparation	Unforeseen Ground conditions	Founding stratum failure or deformation in excess of structure serviceability limits resulting in structure/ infrastructure damage. Disruption to construction owing to unforeseen ground conditions, incorrect stratigraphy and ground parameters	Site personnel	3	4	12	Site Investigation Desk Study	The ground conditions across the site should be established in the detailed design stage. All Factual data should be made available to Contractor.	Follow advice of designers, any ground improvement required to be undertaken by Contractor	2	4	8	
3.0	C	Excavation / Site Preparation	Unexploded ordnance	Injury to site personnel. Damage to plant and equipment. Damage to adjacent properties.	Site personnel	2	4	8	Site Investigation Desk Study	Preparation of Method Statements for the works	Tool Box talks to highlight low risk and actions	1	4	4	
4.0	C	Construction of Cut and Cover and Retained Cut	In-situ construction works	Injury to workforce	Site personal	4	4	16	Design to allow the offsite manufacture where possible to ensure controlled conditions.	Identification and Communication of design advice such as guidance on the equipment to be used	Competent contractor to be used and detailed construction risk assessment to be completed upon reward of detailed design	3	4	12	
5.0	C	Construction of Cut and Cover and Retained Cut	High level in areas of work. Working at height – there will be a need for works to be carried out at high level.	Falls from height, injury and death.	Site personnel	3	5	15	Design to allow the offsite manufacture of as many elements as possible for lifting using machinery. This would eliminate as far as reasonable possible the need for onsite working at height. Insutu works required to ensure water proofing requirements. Precast will be investigates for detailed design.	Identification and Communication of design advice such as guidance on the equipment to be used, leading edge protection, guidance on harnessing operatives if necessary and PPE to be used	Contractor to follow design advice and follow appropriate working at height procedures.	2	5	10	
6.0	C	Construction of Cut and Cover and Retained Cut	Crane movement and Lifting of materials	Dropping of heavy items, material during construction resulting in injury and death, and damage to materials and tunnel.	Site personnel	3	5	15	The use of mechanical hoists to be designed where possible to reduce lifting	Identification and Communication of design advice including the correct procedure for lifting materials and the use of crash/protection decks	Contractor to follow design advice and follow appropriate lifting procedures. Protection/Crash decks to be designed	2	5	10	
7.0	C	Construction of Cut and Cover and Retained Cut	Open Excavations	Collapse of excavations causing injury and death, and damage to plant	Site personnel	3	4	12	Temporary works to be designed (with shoring as necessary) to prevent collapse of any excavations	Appropriate exclusion zones and design measures to be put in place to mitigate the damage and injury caused by potential collapse of excavations. Methods statements to be prepared for works	Contractor to follow design advice and follow appropriate procedures	1	4	4	
8.0	C & M	Construction of Cut and Cover and Retained Cut	Portential for confined space working	Injury to workforce	Site personal	3	4	12	Design in order to prevent confined space through access and ventilation etc.	N/A	Contractor to follow design advice and build to design	1	1	1	
9.0	C	Construction of Cut and Cover and Retained Cut	Excessive uplift ressure on base slab	Excessive deflection of slab, injury to personnel	Site personnel	4	4	16	Design out heave pressure, for instance, through the use of drainage to ensure even uplift pressure	Design slab and piles to resist maximum uplift pressure	Contractor to follow design advice and build to design	1	4	4	
10.0	C	Construction of Cut and Cover and Retained Cut	Excessive loading on walls from retained side due to over excavation prior to the highways construction	Excessive deflection on walls, injury to workforce	Site personnel	4	4	16	N/A	Design of props in the temporary case in order to prevent the deflection of the retaining wall	Contractor to follow design advice and build to design	2	4	8	
11.0	C	Construction of Cut and Cover and Retained Cut	Ground water higher than predicted in site investigation	Excessive uplift forces on the base slab causing damage to the base slab and injury to personnel	Site personnel and public	4	4	16	Further site investigation to establish maximum ground water level	Design for conservative values of uplift forces	Contractor to follow design advice and build to design	2	4	8	
12.0	C	Construction of Cut and Cover and Retained Cut	Interface with operational highways during the construction of highways infrastructure	Accidents involving site personnel and members of the public causing injury and potential death, damage to vehicles and plant	Site personnel and public	4	4	16	Design with consideration of nearby existing A303 to avoid site boundary interface. Where ointerface occurs lane closures as necessary.	Design for traffic management during the detailed design process.	Contractor to follow design advice and follow appropriate procedures and avoid site boundary interface with nexisting A303.	2	4	8	
13.0	C	Construction of Cut and Cover and Retained Cut	Impacts of Depressurization/Dewatering	Excessive settlement and structural damage caused to surrounding infrastructure, compromising stability	Public and site personnel	4	4	16	Further Site Investigation and Desk Study to fully understand local conditions when designing	Ensuring that suitable cut off is designed for	Contractor to follow design advice and build to design. Contractor to also carry out surveys on site before building to confirm geological conditions	3	4	12	
14.0	C	Excavation / Site Preparation	Contaminated Ground/groundwater, including unknown contamination (unlikely due to nature of site)	Risk to human health, controlled water receptors, buried service and structures	Site personnel and users	2	3	6	Site Investigation Desk Study	Report to be made available to Contractor.	Isolation of areas known to be contamination (if any). Excavation and removal of zone for off site disposal to a licenced landfill facility under appropriate Risk Assessments and Method Statements. Tool box talks to raise awareness of risks and actions in the event of encountering contamination. Protection of groundwater monitoring installations	1	3	3	
15.0	C & M	Operation of Highways	Terrorist attack	Injury to public	Public	2	4	8	N/A	Security management and security features of building to be designed at detailed design stage, specialist advise to be sought at design stage	Contractor to follow design advice and build to design	1	4	4	
16.0	M	Repair and maintenance of operational highway, street furniture and landscaping	Difficulty in conducting repairs over operational highway	Vehicular accidents during maintenance causing injury and death	Public and site personnel	3	4	12	Design should be robust to ensure functionality of operational highway and design out maintenacne requirement s where possible. Maintenance regime to be designed to reduce disruption and enable remote moltoing. Footpath and tunnel services building incorporated into design.	Safety features (such as walkways) to be designed at detailed design stage. Maintenance regime to be determined at detailed design stage	Residual risk information to be included in O&M manuals and the Health and Safety File. Closing the operational highway mitigates the risk of injury caused	1	4	4	
17.0	D	Use of highways by heavy vehicles	Overloading of highways base slab	Loading of road base slab exceeding the highways loading designed for, causing excessive deflection and damage to the roads, and injury to public	Public	3	4	12	Specifying restrictions on highways loading to prevent the use of the road by vehicles which are heavier than anticipated	Slab to be designed for loading from heavy vehicles according to highways standards and maximum loading to be made clear for the appropriate signage	Residual risk information to be included in O&M manuals and the Health and Safety File, signage to be put up on the highway to restrict vehicles heavier than anticipated	2	4	8	
18.0	D	Decomissioning of structure	Demolitionmay result in confined space, falling material	Injury to workforce	Site personnel	4	4	16	Intended decomissioning of tunnel to be by backfilling site, not demolition.	N/A	Proposed decomissioning to be included in O&M manuals and Health and Safety File.	1	4	4	
								0						0	

Phase	
C	Construction
M	Maintain/Clean
D	Demolish/Adapt

Hierarchy of Mitigation
1. Eliminate hazard - design out
2. Reduce risk at source - amend design
3. Provide risk information - add to design

Prepared by:	Team Badger							Date:	10 February 2021
Reviewed by:	Team Badger Internal							Date:	
Approved by:	Team Badger Internal							Date:	