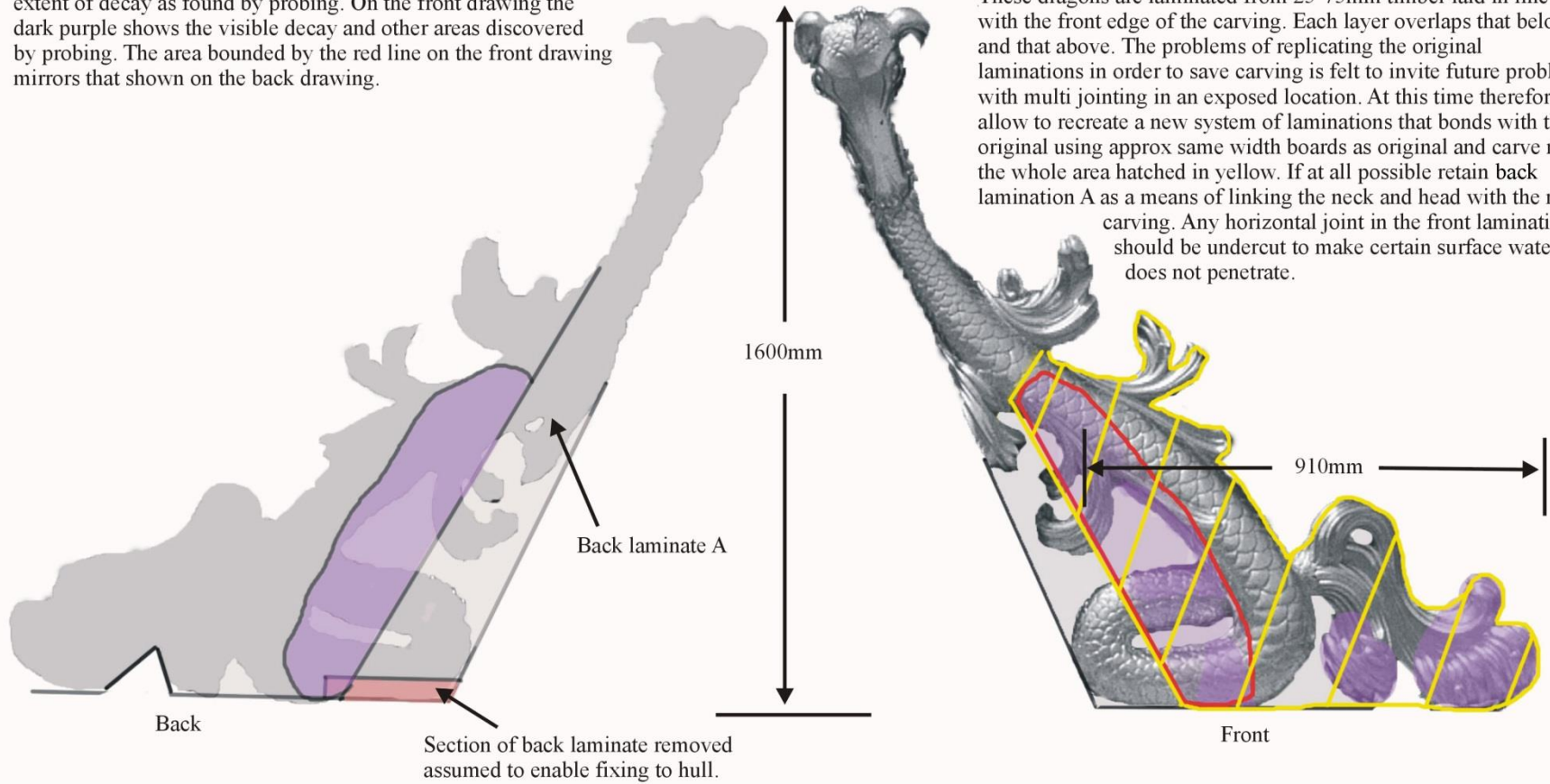


# Repairs 1

The pale purple on the back elevation indicates the apparent extent of decay as found by probing. On the front drawing the dark purple shows the visible decay and other areas discovered by probing. The area bounded by the red line on the front drawing mirrors that shown on the back drawing.



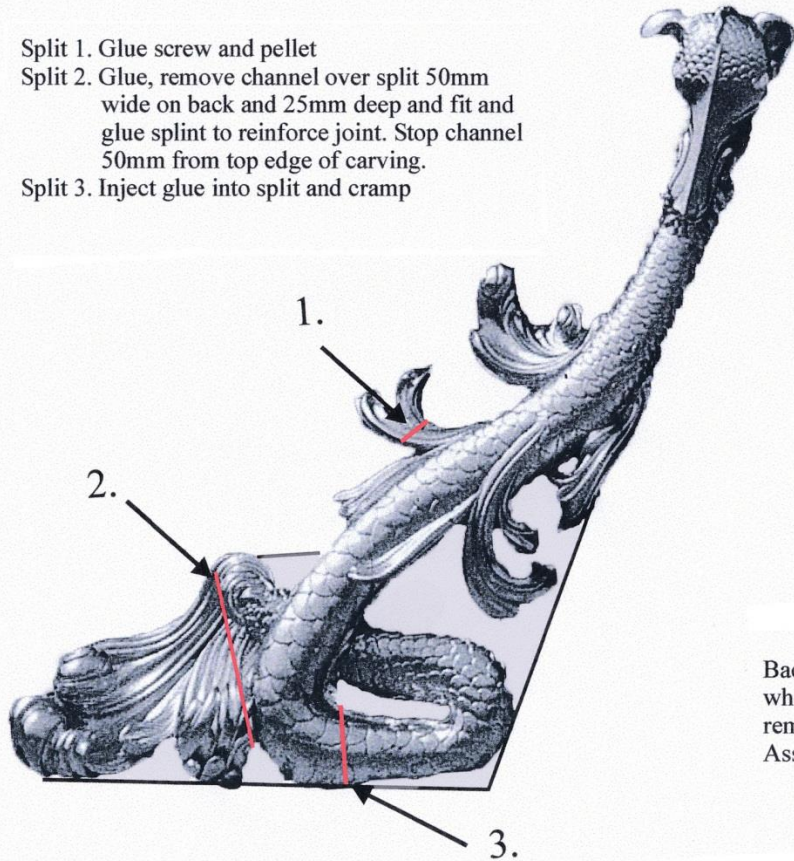
## Treatment

These dragons are laminated from 25-75mm timber laid in line with the front edge of the carving. Each layer overlaps that below and that above. The problems of replicating the original laminations in order to save carving is felt to invite future problems with multi jointing in an exposed location. At this time therefore, allow to recreate a new system of laminations that bonds with the original using approx same width boards as original and carve new the whole area hatched in yellow. If at all possible retain back lamination A as a means of linking the neck and head with the new carving. Any horizontal joint in the front lamination should be undercut to make certain surface water does not penetrate.

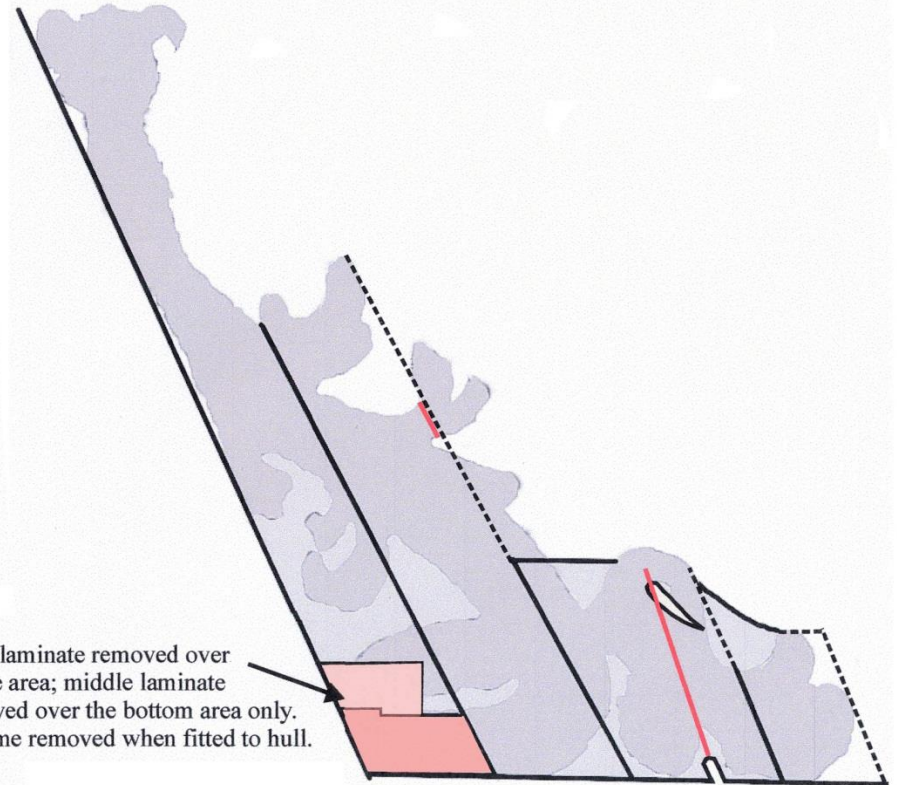
The starboard sea dragon.

## Repairs 2

- Split 1. Glue screw and pellet
- Split 2. Glue, remove channel over split 50mm wide on back and 25mm deep and fit and glue splint to reinforce joint. Stop channel 50mm from top edge of carving.
- Split 3. Inject glue into split and cramp



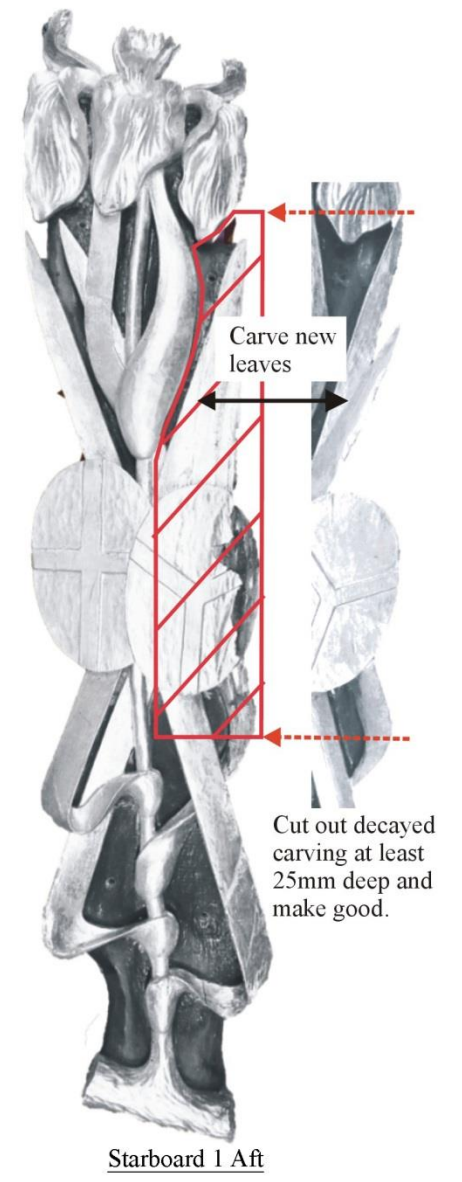
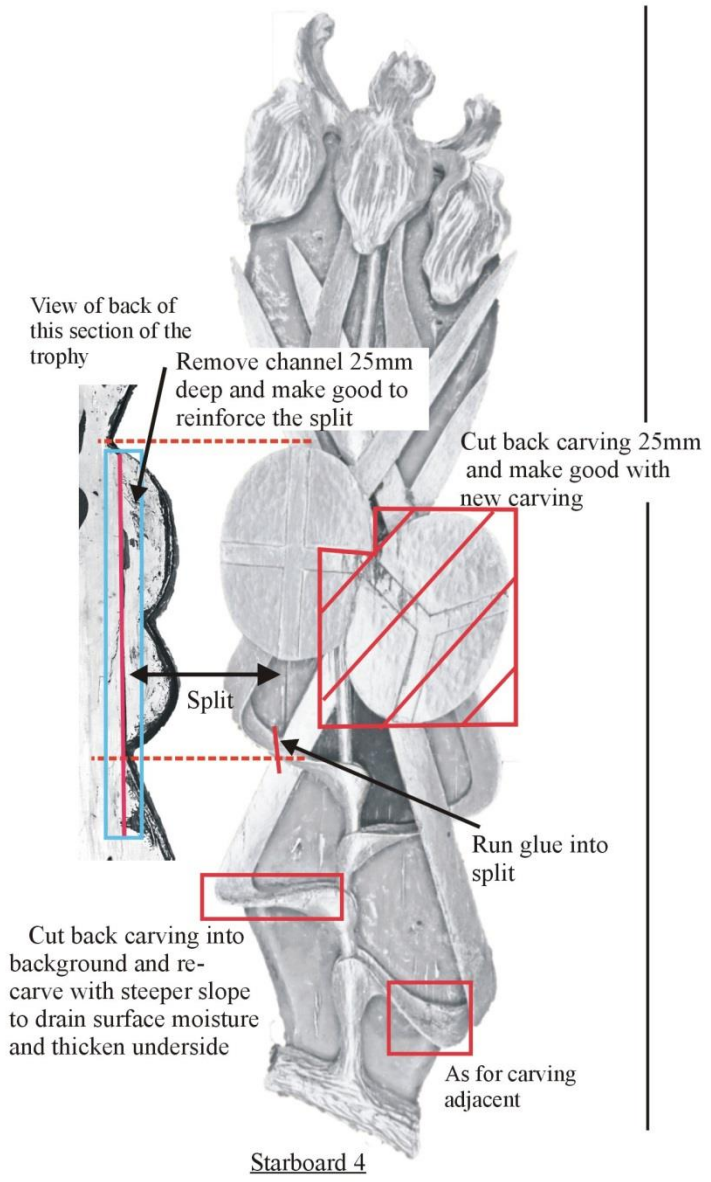
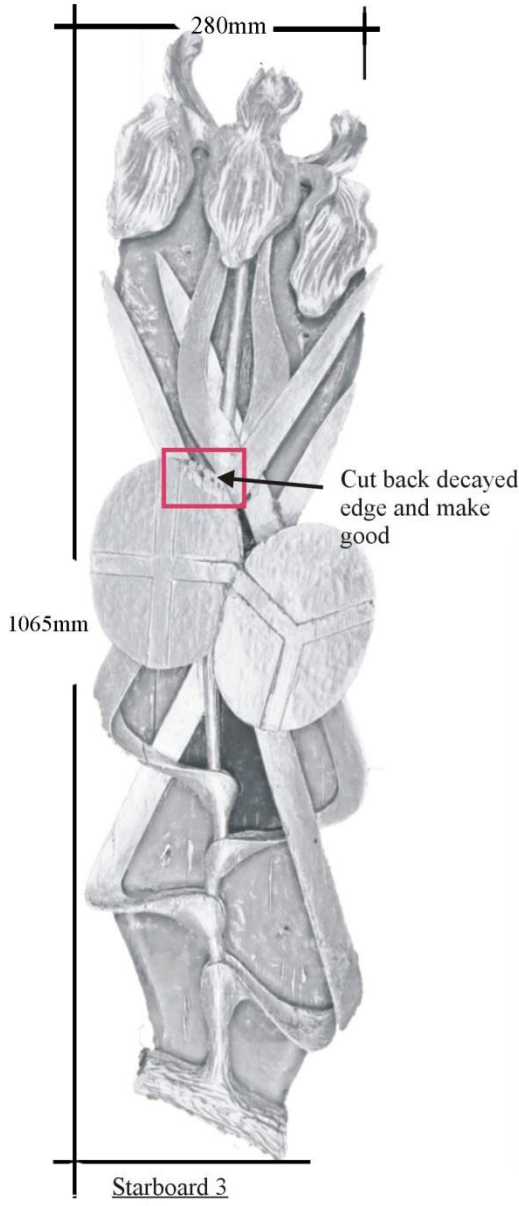
Back laminate removed over whole area; middle laminate removed over the bottom area only. Assume removed when fitted to hull.



Port sea dragon, showing approximate layout of back layer of laminates. The light grey shows where the back layer of laminates is continuous.



# Repairs 3



# Repairs 4



Split in carving, reglue

Port 4



Split in carving, reglue

Port 1 Aft