



## General Visual Investigation Report

### WaveHub / Seatricty Moorings KML-10-

STRICTLY COMMERCIAL IN CONFIDENCE

Client: WaveHub				
Title: Seatricty device mooring General Visual Investigation Report				
Project Number: WaveHub			Document No: KML-WaveHub-GVIR	
Prepared By: SH			Checked By:	
Approved By: SH			Date of Issue: 06/10/20	
00	06/10/20	Issued to client	SH	SH
REV	DATE	ISSUE DESCRIPTION	BY	APP'D

## **CONTENTS**

- 1) INTRODUCTION**
- 2) GVI FINDINGS**
- 3) VIDEO FOOTAGE**

## **1. INTRODUCTION / WORKSCOPE**

KML were requested to perform a visual inspection of the five mooring clumps remaining from the previously deployed Seatricity wave energy device at the WaveHub site off St Ives as per document Seatricity Decommissioning Programme V4.0 DSS 150120

KML's vessel Severn Sea attended WaveHub site on 17<sup>th</sup> September 2020 and deployed her on board ROV (Cougar XT) to perform a visual survey of the mooring blocks at the advised as laid positions, per page 11 of the Seatricity Decommissioning Programme. Blueview sonar mounted on the ROV was used to assist navigation and survey, and USBL to track the ROV. Further details of survey setup and calibration can be provided on request.

Video footage of the survey was recorded, and relevant stills also taken for this report.

In addition to visual survey, positions were plotted of the mooring clumps relative to advised as laid and recorded at time of survey.

Metoccean conditions during the RIV dives were – Wind: E- ENE, Force 4-5, Wave: Height 0.8-1.1m, Visibility: Good, Pressure: 1024>1023 Bar.

## 2. GVI FINDINGS

Moorings clump positions were recorded as below. Note that basis the as laid co-ordinates provided and those below, the centre clump appears to off centre compared to the as-laid positions.

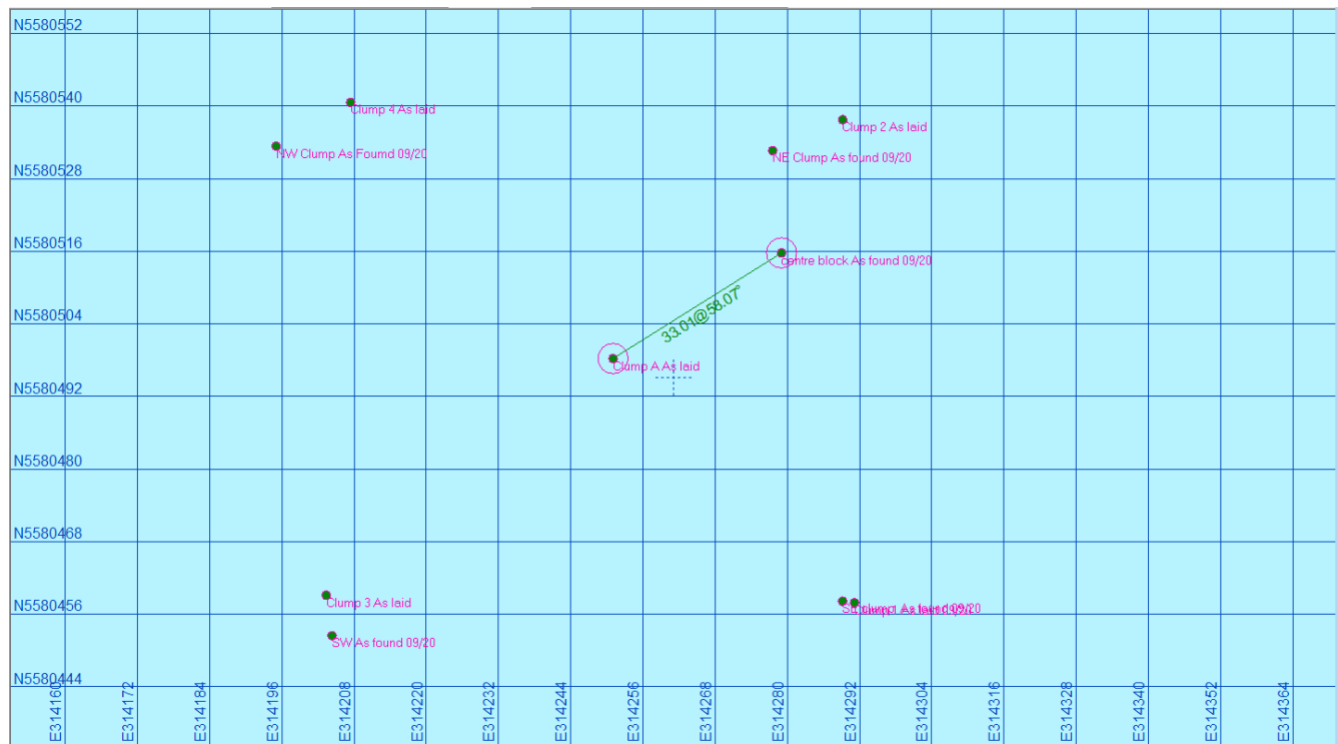
Centre clump- 050°20.8439N 005°36.6279W

SE Clump- 050°20.8131N 005°36.6176W

NE Clump- 050°20.8530N 005°36.6296W

SW Clump- 050°20.8084N 005°36.6889W

NW Clump- 050°20.8518N 005°36.6992W



(i) Mooring clump as laid and plotted positions 17.09.20

Expected marine growth was found on all mooring clumps. No significant fouling by external items (e.g. fishing gear) observed. Some dyneema (NW clump) and pellet buoys (NE clump) and various lengths of chain from previous mooring/deployment operations sighted on and beside the clumps.

Particular attention was paid to top of clump weights and the lifting attachments etc. Pictures of those as follows:

**Centre Clump**



(ii) Centre clump mooring connection

**SE Clump**



(iii) SE mooring clump top connection. Some dyneema remaining.



**SW Clump**



(iv) SW mooring clump top conenction



(v) SW mooring clump top connection opposite angle



**NE Clump**



(vi) NE clump top connection



(vii) NE mooring clump top connection opposite angle





(viii) Pellet buoys entangled in NE clump

NW Clump



(ix) NW mooring clump top connection





(x) NW mooring clump opposite angle



(xi) NW mooring clump - dyneema bundle alongside

**Video Footage**

A SharePoint file has been created, and shared by separate email, where video footage files can be found, along with a copy of this document. Link here: [https://keyvormorliftltd-my.sharepoint.com/:f:/g/personal/bobbie\\_stone\\_keyvormorlift\\_co\\_uk/EIJ0LR4a87FLhTA83lhDL8cB3UaUtrSFs4hMrMtl7H\\_-2w?e=5%3aAYCH2J&at=9](https://keyvormorliftltd-my.sharepoint.com/:f:/g/personal/bobbie_stone_keyvormorlift_co_uk/EIJ0LR4a87FLhTA83lhDL8cB3UaUtrSFs4hMrMtl7H_-2w?e=5%3aAYCH2J&at=9)

Additionally, a hard copy of the video will be forwarded to WaveHub.