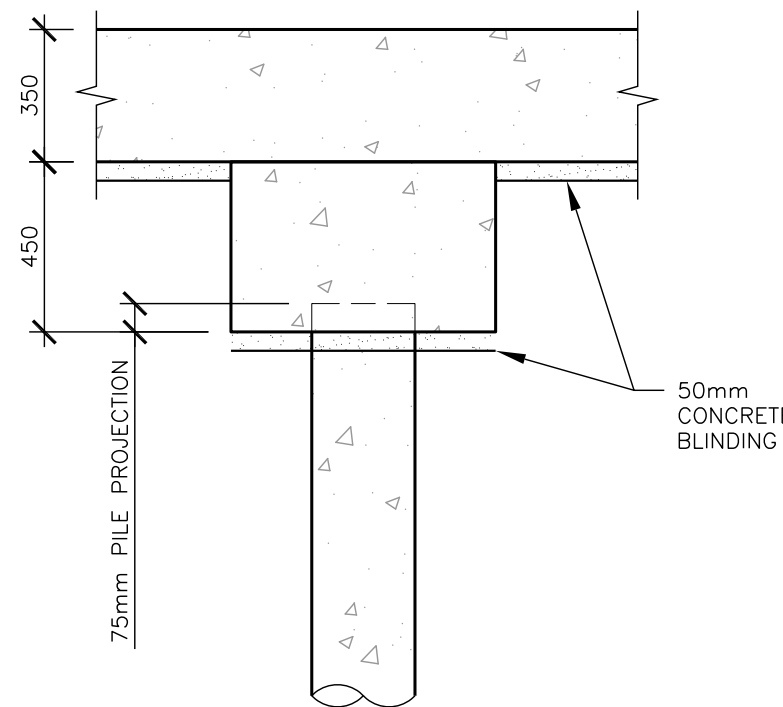
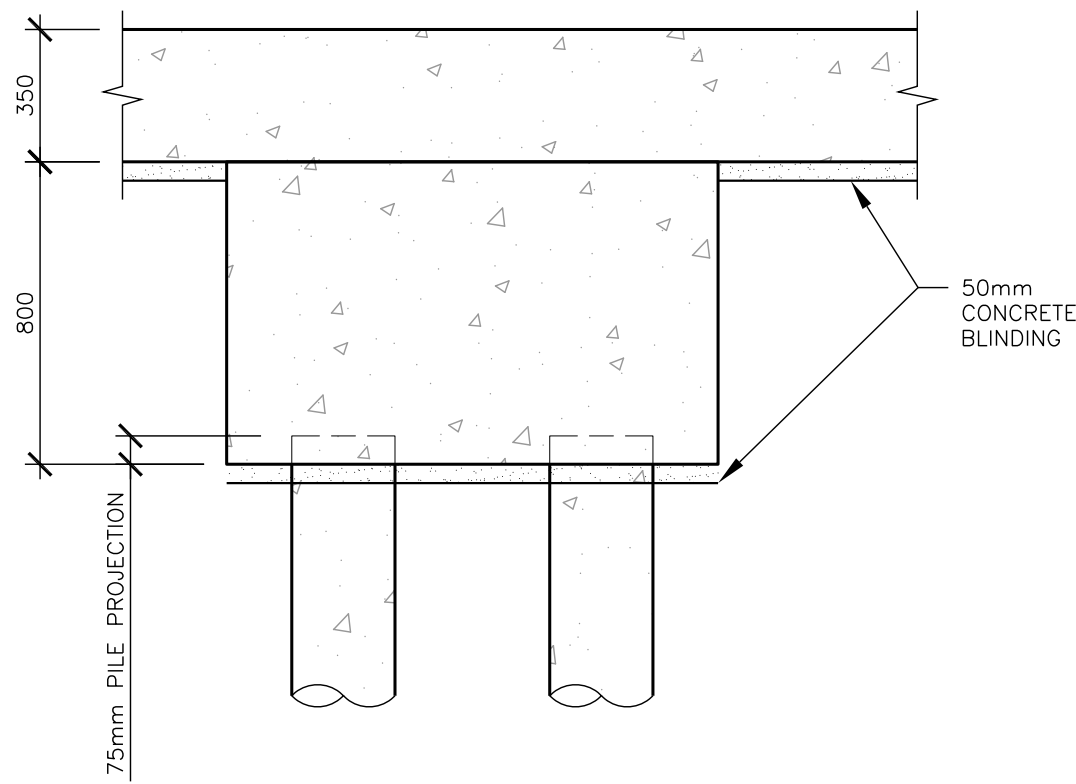
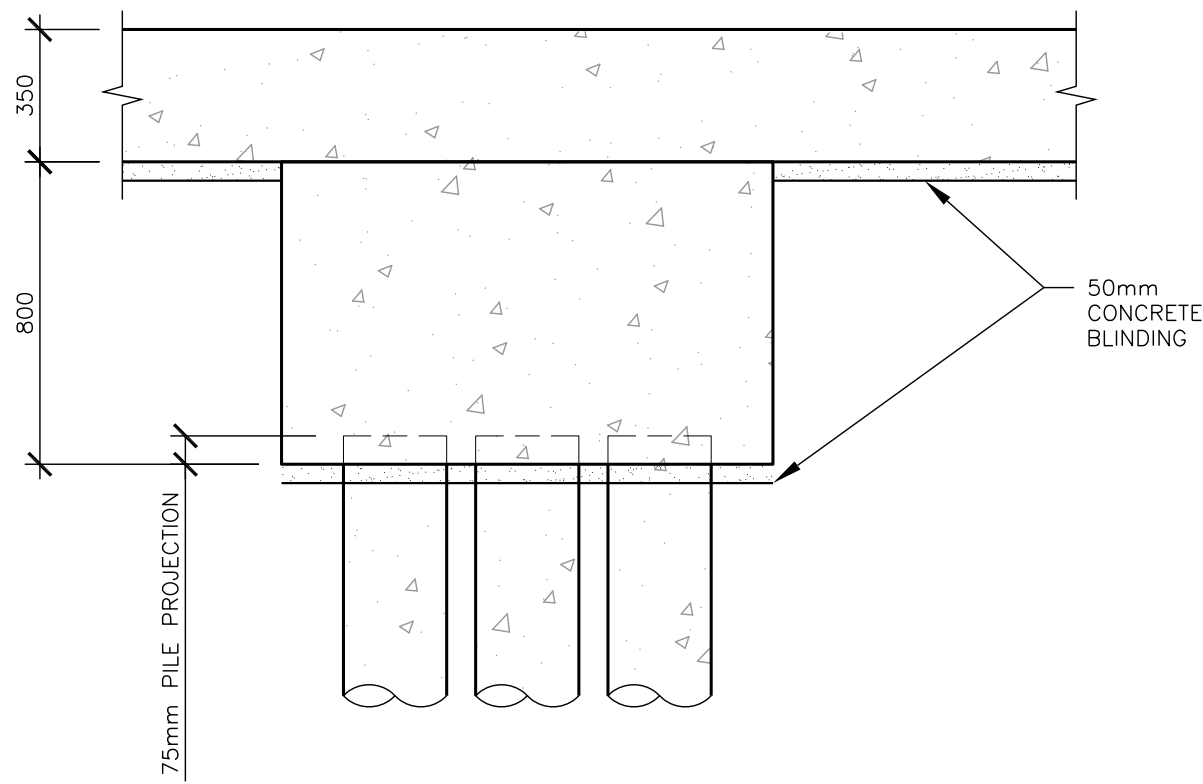


OPTION TO RAISE TOP OF PILE CAP TO MATCH TOP OF SLAB TO MINIMISE DEPTH OF EXCAVATION. FINAL ARRANGEMENT TBC BY CONTRACTOR TO SUIT SEQUENCING OF WORKS.

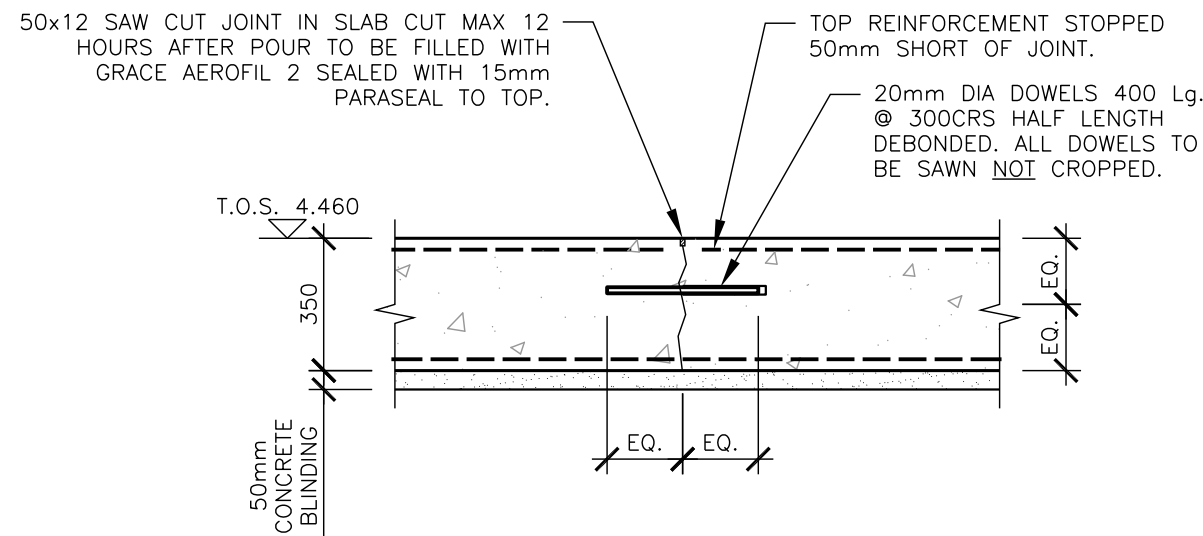
SEE MBA REINF'T DRG No. 24060-52 & BAR BENDING SCHEDULES.



TYPICAL TRIPLE PILECAP
SCALE 1:20

TYPICAL DOUBLE PILECAP
SCALE 1:20

TYPICAL SINGLE PILECAP
SCALE 1:20



CONTRACTION JOINT DETAIL
SCALE 1:20

TENDER



NOTES

- THIS DRAWING IS NOT TO BE USED FOR CONSTRUCTION UNLESS MARKED ABOVE "FOR CONSTRUCTION"
- THE COPYRIGHT ON THIS DRAWING IS RETAINED BY MICHAEL BEARDSALL ASSOCIATES LTD
- THIS DRAWING IS TO BE READ IN CONJUNCTION WITH ALL RELEVANT ARCHITECTS AND ENGINEERS DRAWINGS AND SPECIFICATIONS
- THE CONTRACTOR IS RESPONSIBLE FOR ALL DIMENSIONS AND THE CORRECT SETTING OUT ON SITE. ONLY FIGURED DIMENSIONS ARE TO BE USED
DO NOT SCALE : IF IN DOUBT ASK
- ALL MATERIALS AND WORKMANSHIP TO COMPLY WITH THE CURRENT BRITISH STANDARDS AND CODES OF PRACTICE

SAFETY, HEALTH AND ENVIRONMENTAL INFORMATION

IN ADDITION TO THE HAZARDS/RISKS NORMALLY ASSOCIATED WITH THE TYPES OF WORK DETAILED ON THIS DRAWING, PLEASE NOTE THE FOLLOWING REGARDING SIGNIFICANT RISKS CONSIDERED UNUSUAL, LIKELY TO BE DIFFICULT TO MANAGE OR NOT LIKELY TO BE OBVIOUS TO A COMPETENT CONTRACTOR OR OTHER DESIGNERS.

- TEMPORARY STABILITY TO STEEL FRAMING DURING CONSTRUCTION.
- WORKING IN PROXIMITY TO WATER AND HEIGHT.

IT IS ASSUMED THAT ALL WORKS WILL BE CARRIED OUT BY A COMPETENT CONTRACTOR WORKING, WHERE APPROPRIATE, TO AN APPROVED METHOD STATEMENT.



C	14:10:24	REINFORCEMENT DRG REF. ADDED	RBP	GM
B	27:09:24	TENDER ISSUE	RBP	GM
A	23:09:24	ISSUED FOR PRICING	RBP	GM
	DATE	REVISION SUMMARY	BY	CHK

JOB TITLE:
**PROPOSED ALTERATIONS AT
PENZANCE DRY DOCK
WHARF ROAD, PENZANCE,
CORNWALL, TR18 4BW**

CLIENT:
**DRYDOCK
PENZANCE CORNWALL**

DETAIL:
**WORKSHOP SUBSTRUCTURE
DETAILS SHEET 1 OF 1**

DRN. BY: **R.PAINE**
DATE: **SEPT '24** SCALE: **1:20 @ A1**

JOB NO:	DRAWING No:	REV:
24060	36	C

MBA
CONSULTING

Boscawen House • Chapel Hill • Truro • Cornwall
TR1 3BN
Tel. 01872 260962 Fax. 01872 260963