

NOTES

- Do not scale from this drawing.
- All dimensions are in millimetres unless otherwise stated.
- Dimensions are taken from record drawings and have not been confirmed on site by measurement
- Carriageway resurfacing works confined to the Cable Stay Bridge.
- Traffic Management works extends beyond the boundary of the Bridge.
- This drawing is to be read in conjunction with drawings in the:- SBIM-POW-TO824 Series.
- Each repair patch (A,B,C) shall adopt only one single repair material option (either Appendix 17/1 concrete or Appendix 5700 concrete repair material). Similarly, any additional repairs identified shall be treated in their entirety with just one of those options.

KEY:

MP 197/9 B

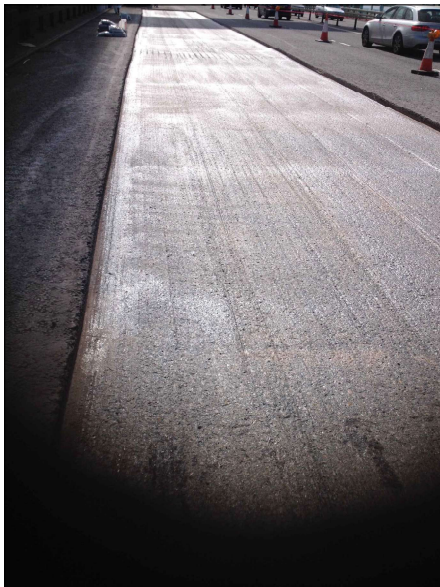
Marker Posts

RESIDUAL DESIGN HAZARDS

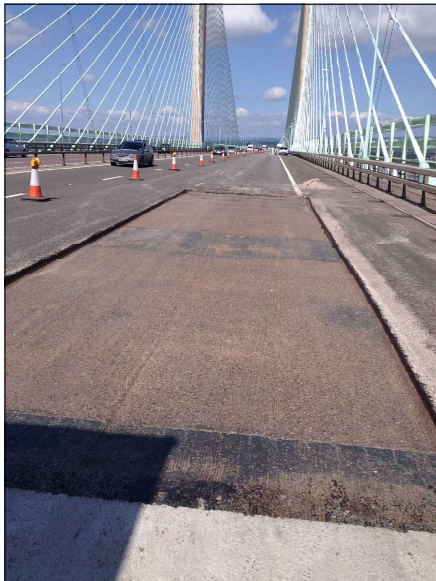
(The following information has been collected from Preconstruction Information and the Amey CDM Hazard Management Process).
Residual Design Hazards:
HS-01 - Striking existing utilities
HS-02 - Temporary instability of bridge as a result of concrete removal
HS-03 - Risk of Injury from protruding reinforcement
HS-04 - RA1 Procedure limitations
HS-05 - Reduction in deck thickness due to hydro demolition
HS-06 - Depth of deck when breaking out concrete
HS-07 - Trafficking of the deck following treatment



Patch C



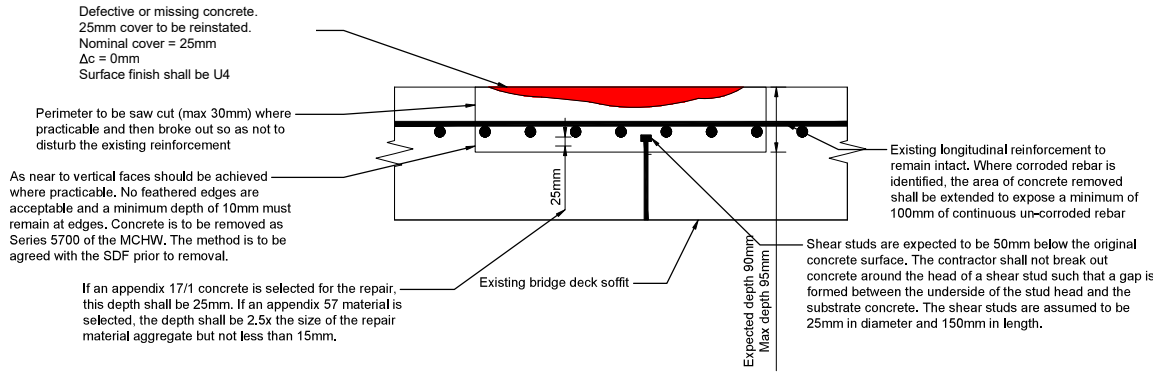
Patch A



Patch B

Concrete Patch Repair Details

NOT TO SCALE

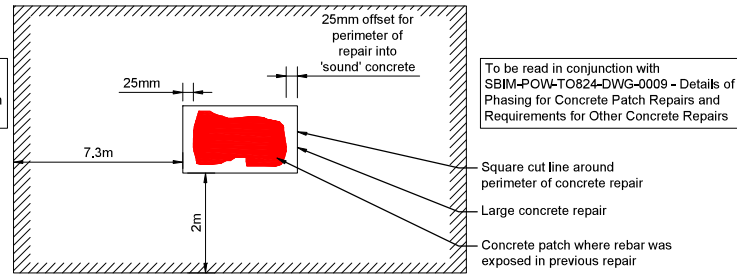


TYPICAL LARGE CONCRETE REPAIR DETAIL ON TOP OF DECK

NOT TO SCALE

Where a deep concrete repair is undertaken no additional concrete repair shall be undertaken within 7.3m longitudinally and 2m transversely from the edge of the repair until it has reached the minimum required strength. See typical plan view of large concrete repair detail.

Where a large (deep) concrete repair is being carried out, if any corroded rebar is identified, the area of concrete removed shall be extended to expose a length or rebar adequate to meet the lap requirements in Appendix 1700 or 5700 as appropriate.



TYPICAL PLAN VIEW OF LARGE CONCRETE REPAIR DETAIL

NOT TO SCALE

P01	For Tender	AD	TB	LG	12.04.24
Rev	Revision details	Drwn	Chkd	Appd	Date
Designed:	Amey				Date: 12.04.2024
Drawn:	Alex Davey				Date: 12.04.2024
Checked:	Tom Bolton				Date: 12.04.2024
Approved:	Laurence Green				Date: 12.04.2024

Copyright in this design © Amey

Amey

www.amey.co.uk



Project Name
M4 Prince of Wales Bridge
Resurfacing Strategy

Drawing Title
Details of Suspected Damaged and
Cover Compromised Deck Concrete

Original Drawing Size : A1	Scale : NTS
Dimensions : -	

Drawing Status For Tender	Suitability S2
------------------------------	-------------------

Drawing No SBIM-POW-TO824-DWG-0008	Rev P01
---------------------------------------	------------