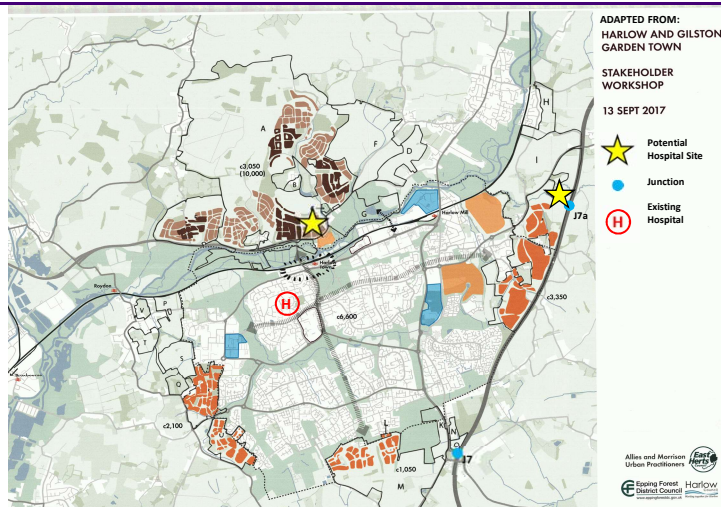


Harlow & Gilston Workshop Update

Spatial Vision and Design Charter Principles:

- Placemaking and Homes;
- Landscape and Green Infrastructure;
- Sustainable Transport Health and Well-being;
- Economy and Regeneration.



Transport Considerations & Survey Requirements

- Planning & Transport considerations for Hospital development are closely linked
- Need to assess broad transport impacts as part of site selection exercise
- ECC's initial draft transport brief included broad assumptions on Hospital components & activity rates
- A more robust approach requires key baseline information to be established for transport modelling
- Recommend further consideration of Hospital & Well-being Campus components is undertaken
- Recommend appointment of Transport consultant to undertake Transport Assessment in liaison with authorities & input to accessibility considerations
- Recommend essential travel & activity surveys are undertaken (staff, visitors & patients) to establish baseline position

