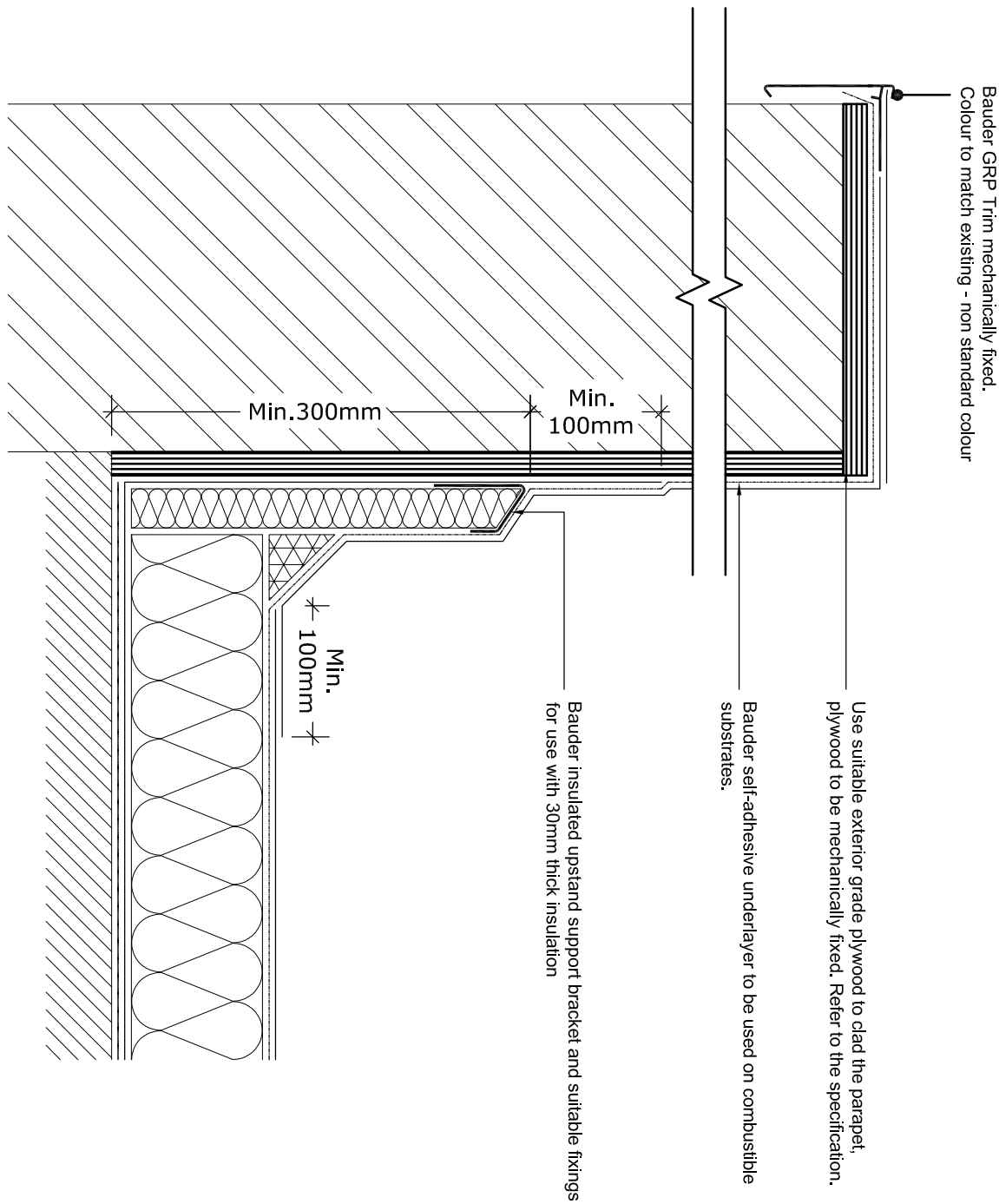


1 PROPOSED UPSTAND DETAIL WHERE NEW ROOF ABUTS BRICKWORK WALL
SCALE 1:5 @ A1



2 PROPOSED INSULATED UPSTAND DETAIL - PLY CLAD - GRP TRIM
SCALE 1:5 @ A1

T2 14.11.23 SD Pre-Tender Issue
Rev. Date Drawn Description

DEVONSHIRE
ARCHITECTS
Donkey Court, Pilgrim Centre, Brickhill Drive, Bedford, MK41 7PZ
da@devonshirearchitects.co.uk
T: 01234 247697

Project:

SHUTTLEWORTH CAMPUS
SALIX PROJECT

Drawing:

RES1 ACCOMMODATION
ROOF DETAILS 2

Stage:

TENDER

Scale:

Drawn:

1:50@A1

SD

Project:

REV:

2211-DA-DET-DR-A-411_T2

COPYRIGHT IN THIS DRAWING IS VESTED IN DEVONSHIRE ARCHITECTS LIMITED AND MUST NOT BE REPRODUCED WITHOUT PRIOR APPROVAL OF DEVONSHIRE ARCHITECTS
DO NOT SCALE FROM THIS DRAWING - SIZING FOR PLANNING PURPOSES IS ALLOWED
ALL LEVELS MUST BE CHECKED ON SITE
ALL SETTINGS MUST BE CHECKED ON SITE
THIS DRAWING MUST NOT BE USED FOR CONSTRUCTION UNLESS ISSUED FOR CONSTRUCTION
IF THERE IS ANY DOUBT ENQUIRE WITH THE AUTHOR