



The Safe Place To Train

Maj Al Welch

SO2 OME Overseas and Training
Region

The Safe System of Training

- Safe Place
- Safe Person
- Safe Practice
- Safe Equipment
- Any one part of the Person, Practice and Equipment could affect the Safe Place
- Therefore, we (DIO or Industry Partner staff) will continue to observe and, if necessary, stop unsafe activities on the Training Estate



Safe Place



A Safe Place is one in which the controls necessary to enable authorised training to be conducted safely, have been identified by a site-specific risk assessment and directed through appropriate orders (eg Range Orders)

Safe Practice



Safe Equipment



Safe Person



Safe Place

- Provide a space
- Limit its use
- Control the space
- Monitor the space
- Preventative maintenance



Safe Place – Provide a Space

- In order for weapons and ammunition to be employed in a safe space we need to create a boundary that has limits and controllable borders
- This space has to be large enough to allow the Weapon Danger Area to be overlaid and contained at various angles in order to maximise the use of the space allocated
- We then mark our space as dangerous by signage, gates, fences and observation. All Health & Safety regulations are conformed to in the maintenance of the space



Safe Place – Limit its Use

- The primary hazard from within the safe place is the ammunition launched by weapons
- There is not enough space in any of our training areas to fire what we want, where we want, therefore limitations of which weapons and ammunition we can use within the space, are imposed
- Some spaces are larger than others, therefore the larger spaces can cater for the larger Weapon Danger Area



Safe Place – Control the Space

- To minimise risk during full use of the space, we have to make maximum use of the space we control by directing where and what direction the training takes place
- There can be a common impact area allowing multiple users to be employed within the space using their own allocated area



Safe Place – Monitor the Space

- Where possible, we ensure that the user is applying the Safe System in Training (SST)
- Where possible, we observe training on the ground (live and dry)
- Where possible, maintain observation of the boundary
- **And the Industry Partner supports DIO in this control of the Safe Place**



Preventative Maintenance – IP Responsibility

Safe Range

- Designed Properly
- **Built to that design**
- **Maintained correctly**
- **Used correctly**

Assurance

Daily inspection of range facilities by the Training Area Operative (**Industry Partner**)

Assignment Instructions

- Detail how IP personnel undertake their tasks
- Instructions agreed by TSO on behalf of commander
- Provides assurance that IP are fulfilling the responsibilities of the contract



Safe Place – IP Responsibility

The Provision and Management of ranges, training areas and training facilities to the end user, pre, during and post training;

- Establish a Safe Place Immediately prior to training activity
- Support end user in the maintenance of Safe Place from defined locations
- Takeback ranges, training areas and training facilities from end user





UK Training Estate Delivery –
Service Manager

Col Phil Cook
Deputy Head UK Training

UK Training – Key Facts

The UK Training Estate is divided into 6 areas

- all different in geographic size, assets, usage and staff
- all have different pressures and constraints

Key aims of the contract across all 6 areas are:

- Deliver the Customers' Command Infrastructure Delivery Plan (CIDP)
- Deliver a Safe, Secure, Compliant place to train
- Deliver a Common 'User Experience' across the Training Estate
 - Training Facilities
 - Accommodation
 - Catering
- Be responsive to Customer needs



Hard FM

- All Training Estate built facilities:
 - 8,923 level 2 assets
 - training assets, accommodation, classrooms, offices, stores, pump rooms, fences, tenanted estate, etc
 - Require inspections, reactive maintenance and pre-planned maintenance
 - To ensure the estate is at a compliant standard



Soft FM

- Accommodation – hotel service for 22,000 bed spaces
 - Catering – not Pay as You Dine
 - Portable sanitation and green latrines
 - Stores and Employer equipment
 - Mechanical Transport Fuelling Installation (MTFI) Service and administration
 - Waste collection, sorting and recycling
 - Dog kennel service
 - Tenanted Estate Management (rents)
 - Caretaker services (Adventure Training huts)



Rural Estate

- Maintenance of the Rural Estate
 - 1% UK

- Deliver Integrated Rural Management Plans
- Maintenance of landways and public access routes incl snow & ice clearance and remediation of military training damage
- Maintenance of sea and river flood defences
- Forestry Management
- Clearance of Fly Tipped Waste
- Support to emergency services to manage wildfire risks
- Maintenance of reservoirs, bridges
- Maintenance of fences
- Vegetation management
- Conservation
- Management of monuments



Training Service

- Provision and operation of Ranges, Training Areas & Training Facilities
 - Range safety radar and surveillance equipment
 - Land based Range communications
 - Provision/manufacture, installation and operation of Targets and Targetry
 - Clearance and disposal of Military Debris and litter
 - Range area clearance and control of access and incursions incl livestock (incl provn of horse riders)
 - Handover/take back of training facilities
 - Air Weapons Ranges incl comms, bomb scoring, support to Air Traffic Control and Targetry control
 - Wyke Regis Bridging Camp
 - Spadeadam - bespoke complex equipment for surface to air simulation, overseas deployment of radar operators
 - Range de-leading
 - Issue of ammunition and Range Head Store management
 - Safety boats and ferry services



Supporting Decision Making

Provide functional support to deliver:

- robust, accurate data
- management information
- financial and planning processes.

These will include:

- Asset Management
- Facility Condition Monitoring
- Life Cycle Replacement Planning
- Provision of Estate Management Plans
- Provision of Usage and Cost data



The Operations Room

- Staffed 24/7 to give situational awareness of activity across UK Trg
- Provide assistance and support to users in the event of an incident
- Focal point for notification of duty officers and information cascade
- Sign in and Sign out of ranges and training areas in accordance with Standing Orders
- Maintain the incident database/log



Collaborative Approach

The relationship between Employer and Industry Partner will be wholly collaborative. In contract management terms this will mean:

- Joint location of staff down both organisational chains wherever practicable
- Joint Assurance activity
- Joint Processes
- Joint Communication
- Trust & Co-operation
- Joint Relationship Management Processes

TRUST is both essential and key



Estate Management of the Rural Estate

Mr Jonathan Gasson
Principal Estate Surveyor

Land Use and Type

- 157,000 Ha across the UK – predominantly open countryside consisting of:
- Mountain and Moorland
- Extensive Downland and Heathland
- Intensively Farmed Grassland and Arable Land
- Coast and Margins
- Commercial Conifers
- Broadleaf Woodland
- Ancient Semi-Natural Woodland



Land Legal Status

- Freehold 157,000Ha
- Leasehold land , training and access rights 34,000Ha
- Licensed land for short term use and Training on Private Land (TOPL) 100,000Ha



Tenanted Estate Objectives

- Primary Estate Objective:
 - Military Training
- Secondary Estate Objectives:
 - Income Generation (Properties let on the open market)
 - Good Estate & Conservation Management in partnership with tenants, statutory bodies and non statutory bodies
- Public Access



Letting Types

- Lettings on the estate **154,541 Ha**
- Annual income in the region of **£6.3**
- From 1,318 Agreements
- Including ~1,750 Level Assets
- Farm Business Tenancies
- Agricultural Holding Acts Tenancies
- Commercial tenancies
- Assured Shorthold Tenancies
- Licensed grazing agreements



Tenant Estate Summary

Letting Type	Number of Agreements
Agricultural	263
Grazing Licences	297
Land	72
Residential	73
Grant of rights	152
Commercial	25
Buildings	44
Tele-communication Masts	14
Wayleaves	176
Allotments	36
Fishing	22
Shooting	25
Sporting	18
Garden	27
Sub Stations	4
MISC	70

Scope of Professional Work Required

- Provide an Estate Terrier Record of Current Agreements
- Rent Collection and Rent Reviews
- Lettings Lease Renewals
- Lettings Lease Breaks & Lease Expires
- Covenant Management including an annual inspection against tenants and landlords liabilities
- Management of 3rd Party Casual Use Licenses
- Hirings Rent Payments & Rent Review Alerts
- Alerts on 3rd Party Planning Applications that could affect the use of the MOD Estate



Further Professional Advice

- Estate Rationalization Opportunities
- Disposals & Acquisitions
- Surveying & Legal Services
- Land Ownership Records & Advice



Estate Environment

Mr Richard Brooks
Principal – Environmental Support and
Compliance
Technical Service

What makes the MOD estate special?

- The estate missed out on the main thrust of agricultural intensification with large tracts remaining uncultivated for many hundreds of years. In addition, delivering the extensive land management requirements of military training, provides an estate rich in historic features and wildlife without comparison in the UK.
- Key Facts:
 - This complex estate supports: 157,000 hectares of rural estate; 6% of UK's SSSIs; 86 x listed buildings; 700 x scheduled monuments
 - JSP 850 sets out MODs environmental obligations, and JSP 362 is the Defence Lands Handbook
 - MOD is the largest developer of UK and European designated habitats and balances this with a duty to maintain and enhance our estate
 - MOD is a Competent Authority across our designated habitats



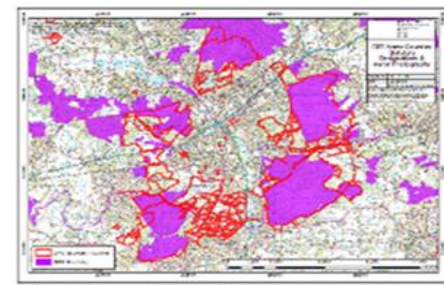
What does the contractor deliver for MOD - Natural Environment

The Contractor delivers:

- ☐ Co-ordinates the revision of Integrated Rural Management Plans which forms the basis of most stewardship requirements

Manage the wider habitats and designated landscapes through tasks such as:

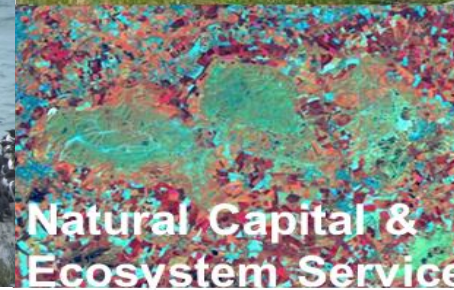
- ☐ Scrub Clearance
- ☐ Habitat Enhancement
- ☐ Protected Species protection and monitoring
- ☐ Water quality and habitat improvement



Protected Species



Wider Biodiversity



Natural Capital & Ecosystem Service



What does the contractor deliver for MOD – Forestry

Forest and Woodland cover is a vital military training requirement, and holds significant nature conservation and landscape importance. With the increase in pests and diseases, forest and tree management comes with great responsibility for risk to life.

Plans: Forest Management Plans; Site Tree Management Plans

Contractor Delivers: Amenity and silvicultural forest management procedures:

- ☐ Planting (silvicultural plantations, woodlands, hedgerows, parkland and amenity specimen trees) weeding, protecting (tubes/fencing);
- ☐ Thinning, brashing up, pruning, pollarding;
- ☐ Felling, marketing;
- ☐ Arboricultural / Health and Safety Risk Assessments (forests, woodlands, access routes, car parks, camps and road side trees).



What does the contractor deliver for MOD-Historic and Cultural Environment

The training estate supports scheduled monuments and listed buildings. In addition the estate supports a vast wealth of significant historic features that have either not yet been fully identified or are significant but not scheduled.

The contractor typically delivers:

- ☐ Maintenance of listed elements of buildings such as pointing brickwork, mending roofs, replacing wooden structural elements;
- ☐ Maintenance of monuments such as hand cutting scrub and rabbit/badger net protection of burial mounds;
- ☐ Erecting and maintaining white topped posts / palisading to protect sensitive archaeology;
- ☐ Support archaeological excavation work;



**Over 2,500 Archaeological Sites
Over 360 Scheduled Monuments**



**Significant Archaeological
Landscapes in NW Europe**



What the Contractor Does for MOD - Access

- MOD has a presumption in favour of public access, and in order to deliver this, paths, car parks, signs and control measures are provided and maintained.
- MOD uses Byelaws to manage public access across our ranges and training areas, in addition to devolved legislation.

The contractor delivers:

- Monitoring safe place and reporting access patterns and incursions
- Risk assesses footpath condition and safety
- Maintains signs, paths and foot path furniture such as foot bridges, styles, and gates.
- Manage other public access and recreational pressures



SANCTUARY MAGAZINE

The MODs Sustainability, Stewardship and Conservation Magazine

<https://www.gov.uk/government/publications/sanctuary>

