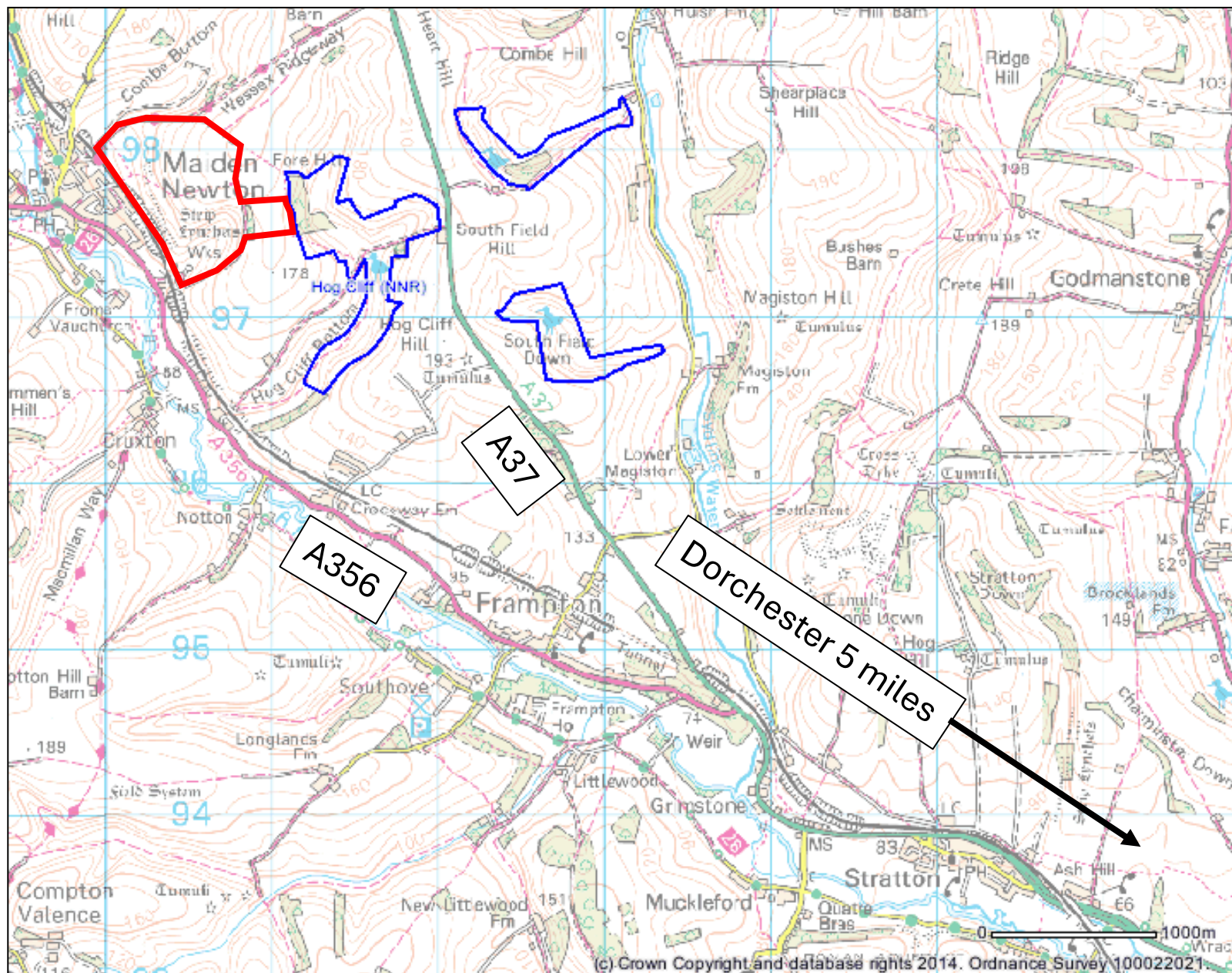


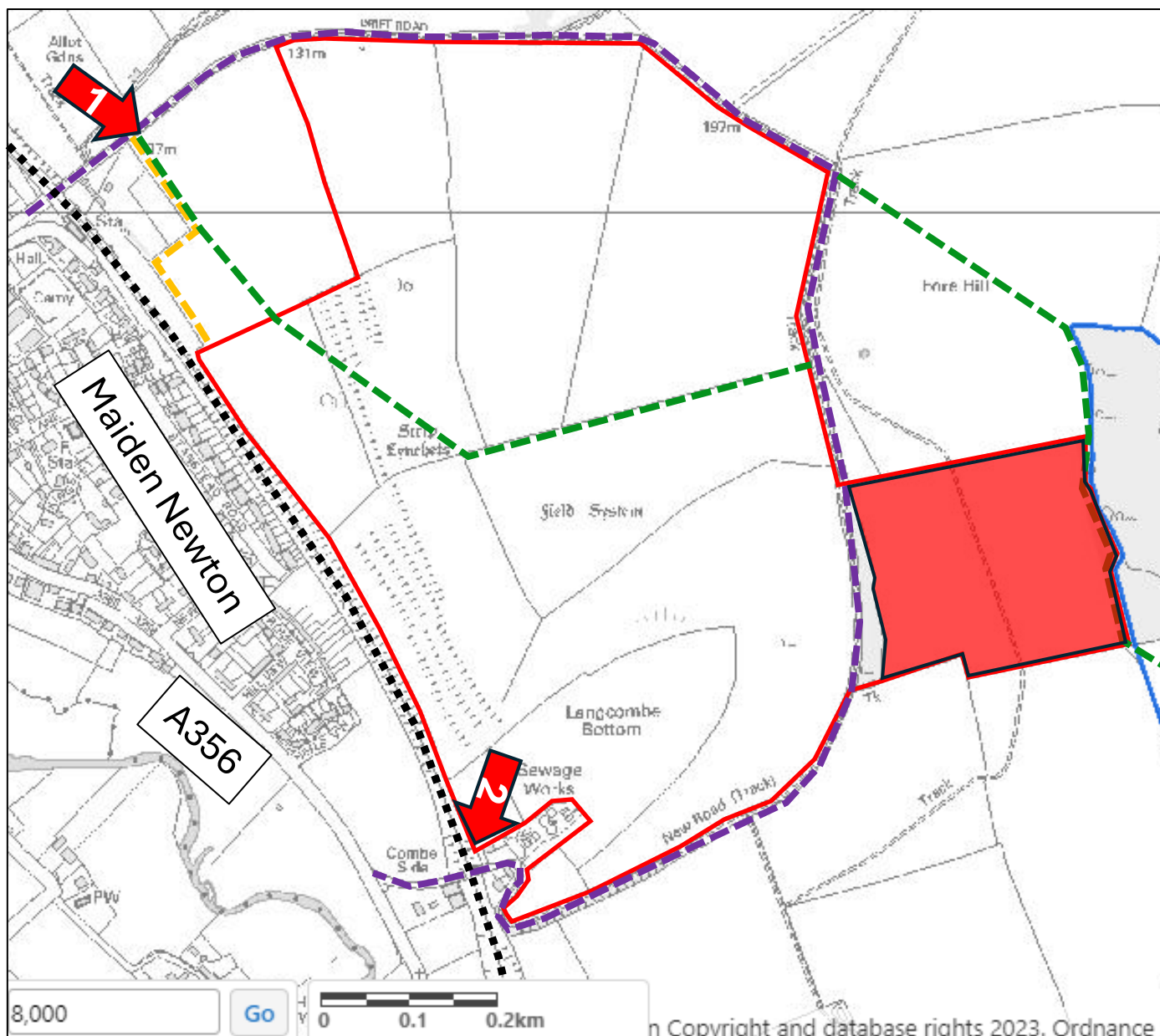
# Hog Cliff NNR Glebe Farm deer fencing – location of works



— Glebe Farm (location of works)

— Hog Cliff NNR

# Hog Cliff NNR Glebe Farm deer fencing, Parson's Close – access to worksite



## Allotment access

(height restricted no tractor)



What3Words  
firmer.receive.listen

## Sewage works access



What3Words  
squirts.reflect.goodbyes



Glebe Farm, Hog Cliff NNR



Parsons Close field  
(worksite). Centre of field  
What3Words:  
seagulls.hindering.armful



Footpath



Bridleway



NE right of  
access



Trainline



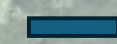
# Parsons Close Deer Fencing

Deer height fencing

Deer height kissing gate



Deer height field gate

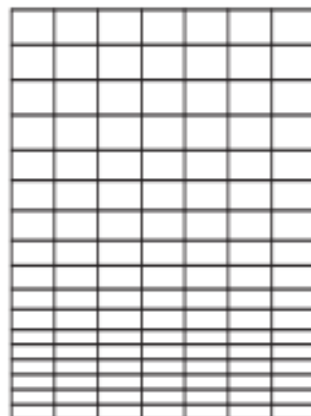


## Specification

- General Deer Fencing Specification in line with Forestry Commission guidance found at:  
*<https://cdn.forestresearch.gov.uk/2006/03/fctg002.pdf>*
- Parsons Close fence to exclude Sika, Fallow, Roe and Muntjac.
- Fence height – 1800mm
- Maximum mesh size – 80mm x 80mm up to 1500mm of fence height
- Intermediate Stakes – chestnut, 2.6m x 8-10cm
- Strainers/turning posts – chestnut, 3m x 15-18cm
- Maximum stake spacing – 5 metres
- Tensioned top and bottom support wires to prevent mesh from sagging.
- Gate hanging and slamming posts chestnut square or round, minimum dimensions: 3m x 18cm. Not to be used as strainers.
- 2 x Field Gates must exclude all deer species above and be constructed from treated softwood timber. Height 1800mm and be minimum 3660mm wide. Can be single gate or pair, but pair must be secured in the centre (e.g. by drop bolts). Must be able to be secured with padlock.
- 4 x Pedestrian gates must be self-closing, with a lockable latch and open within kissing gate enclosure. Constructed from treated softwood timber, 1800mm high and minimum 900mm wide.
- Some light scrub removal and/or topping will be required along fence line (to be confirmed with NE staff after contract awarded).

Deer size	Large		Medium	Small
Species	Red and Sika	Fallow	Roe	Muntjac
Minimum fence height (m)	1.8		1.5	1.5
Maximum mesh size (mm)	200 x 300	200 x 220	200 x 150	75 x 75

Single width netting deer fences



Netting code/type

17/190/30 13/190/30	13/190/22 15/150/15	13/190/15 15/150/15	LHT 23/167/8 LHT 26/195/8 13/190/22 plus overlay of 1.8 m x 75 mm hexagonal wire mesh netting. 65 mm <sup>2</sup> mesh HT (heavy) plastic netting.
	13/190/15 15/150/15		
17/190/15			
		LHT 23/167/8 LHT 26/195/8 65 mm <sup>2</sup> mesh HT (heavy) plastic. 13/190/22 plus overlay of 40 mm <sup>2</sup> mesh HT (light) plastic netting or 50–75 mm mesh hexagonal wire netting.	
26/195/8, 17/190/15 plus overlay of 65 mm <sup>2</sup> HT (heavy) plastic netting.			





