
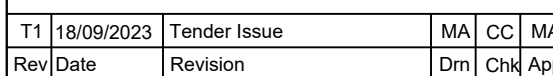


Scale Bar: 1:100

A horizontal scale bar with markings at 0, 1, 2, 3, 4, 5, and 6. The bar is divided into segments by vertical tick marks. The segments between 0 and 1, 1 and 2, 2 and 3, 3 and 4, 4 and 5, and 5 and 6 are of equal length. The segment between 0 and 1 is further divided into four smaller, equal segments by three additional tick marks.

- A. THIS DRAWING IS NOT TO BE SCALED FROM.
- B. ALL DIMENSIONS SHOWN ARE IN MILLIMETERS UNLESS OTHERWISE STATED.
- C. THIS DRAWING SHALL BE READ IN CONJUNCTION WITH THE PROJECT MECHANICAL PLANT SCHEDULES.
- D. THIS DRAWING MUST BE READ IN CONJUNCTION WITH ALL CONSULTANTS, SUB-CONSULTANTS AND ARCHITECTS PROJECT DRAWINGS.

- ### LIGHTING
- 1 way light switch
  - 2 way light switch
  - Intermediate light switch
  - No of gangs
  - Dimmer switch
  - PIR PIR for extract fan - Volt free contacts



Tel: 07464 605683 email: [info@kernowservicesdesign.co.uk](mailto:info@kernowservicesdesign.co.uk)  
website: [www.kernowservicesdesign.co.uk](http://www.kernowservicesdesign.co.uk)

Client: **Royal Cornwall Museum**

Project Name: ROYAL CORNWALL MUSEUM  
TRURO  
CORNWALL

Drawing Title:

FIRST FLOOR LEVEL 3 (PART)  
LIGHTING AND EMERGENCY LIGHTING LAYOUT

Scale at A1: 1:50

Status: **Tender Issue**

Drawing No:	Revision:
1107-KSD-DR-E10-007	T1