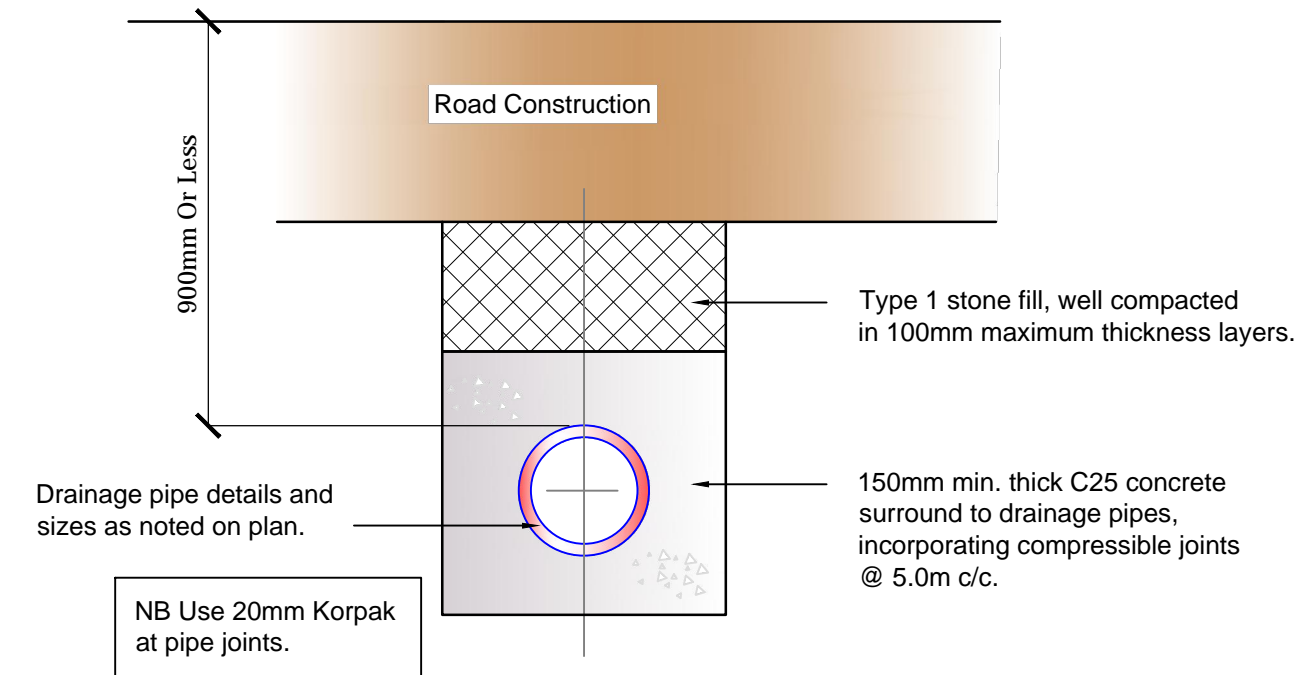
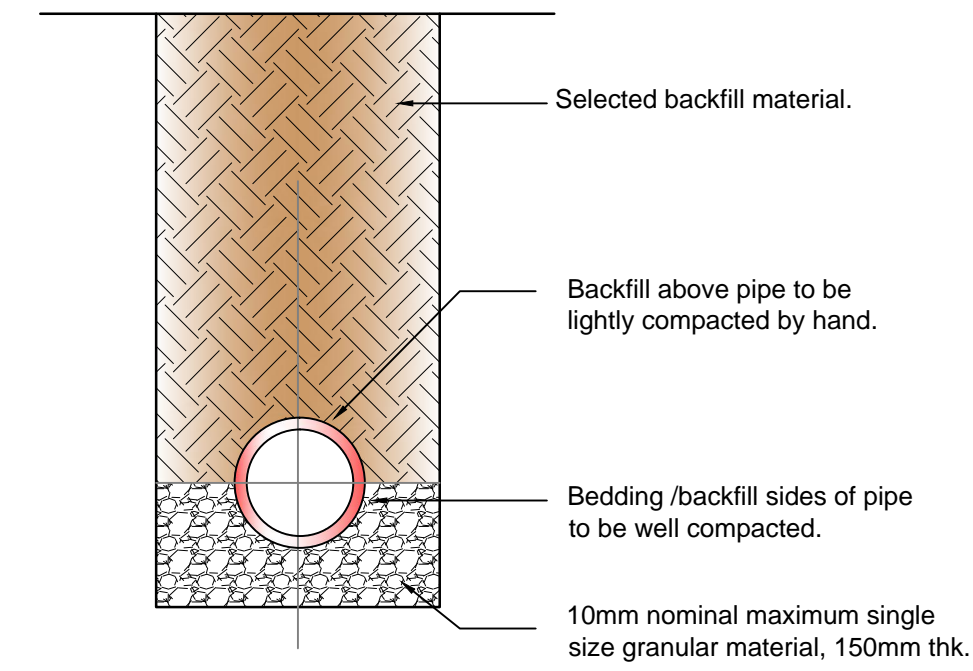


Bedding Details To Pipes Scale 1 : 20
More Than 900mm Below Finished Level



Bedding Details To Pipes Scale 1 : 20
Less Than 900mm Below Finished Level



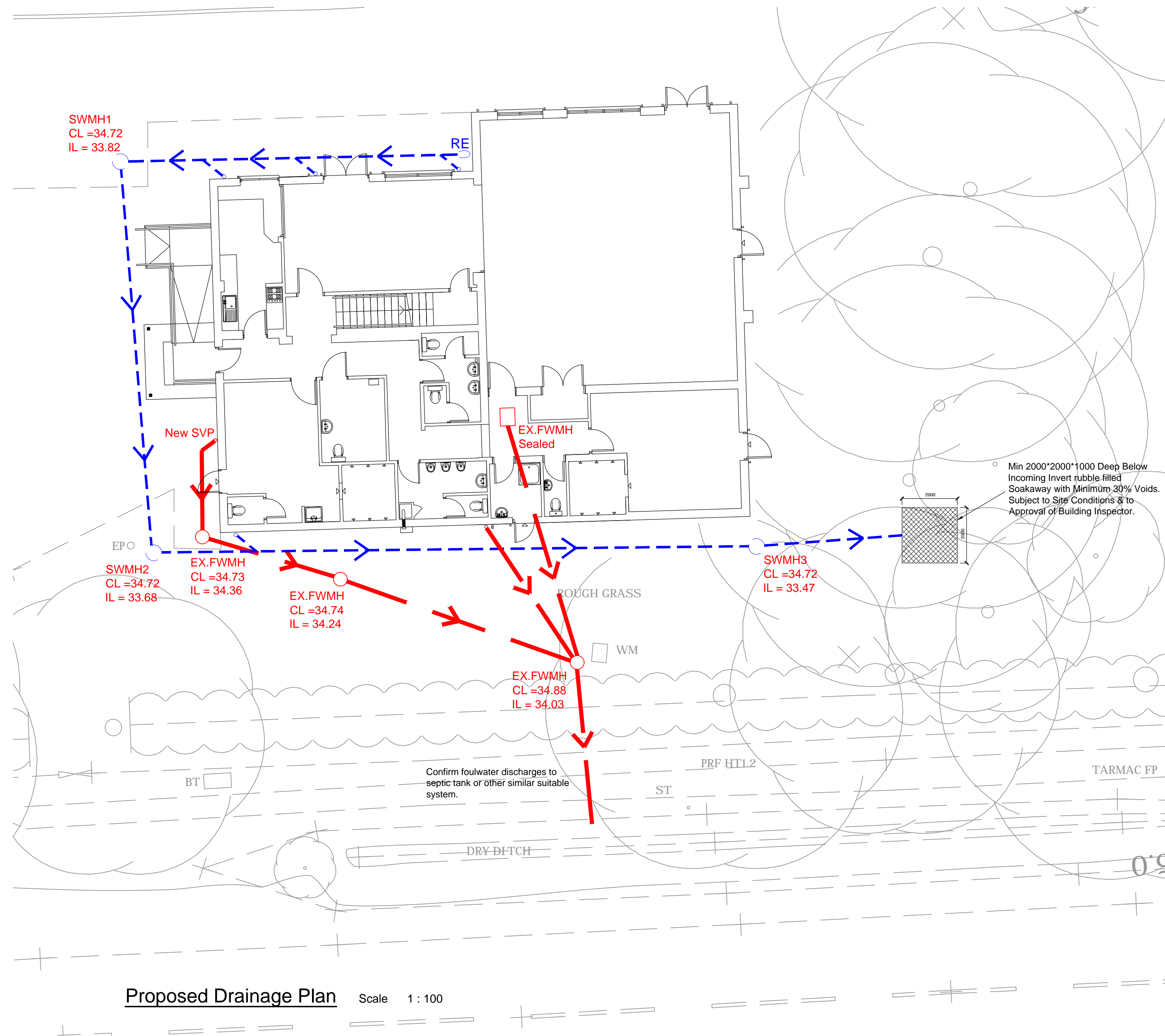
Bedding Details To Pipes Scale 1 : 20
In Grassed / None Traffic Areas

Notes

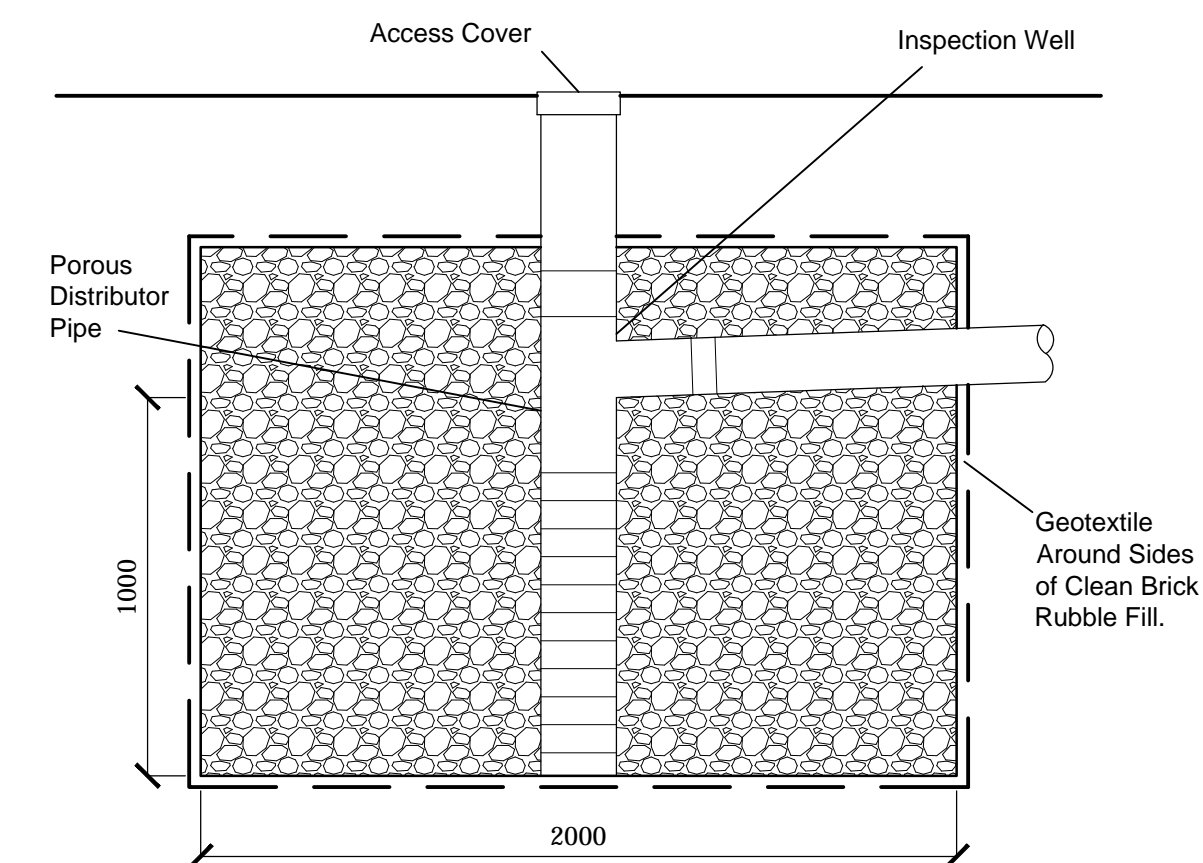
- 1) DO NOT SCALE, IF IN DOUBT ASK.
- 2) TO BE READ IN CONJUNCTION WITH THE ARCHITECTS DRAWINGS
- 3) SOAKAWAYS TO BE MIN 5M AWAY FROM ANY BUILDINGS.

— Proposed New Stormwater Drainage.
 — Existing Foulwater Drainage

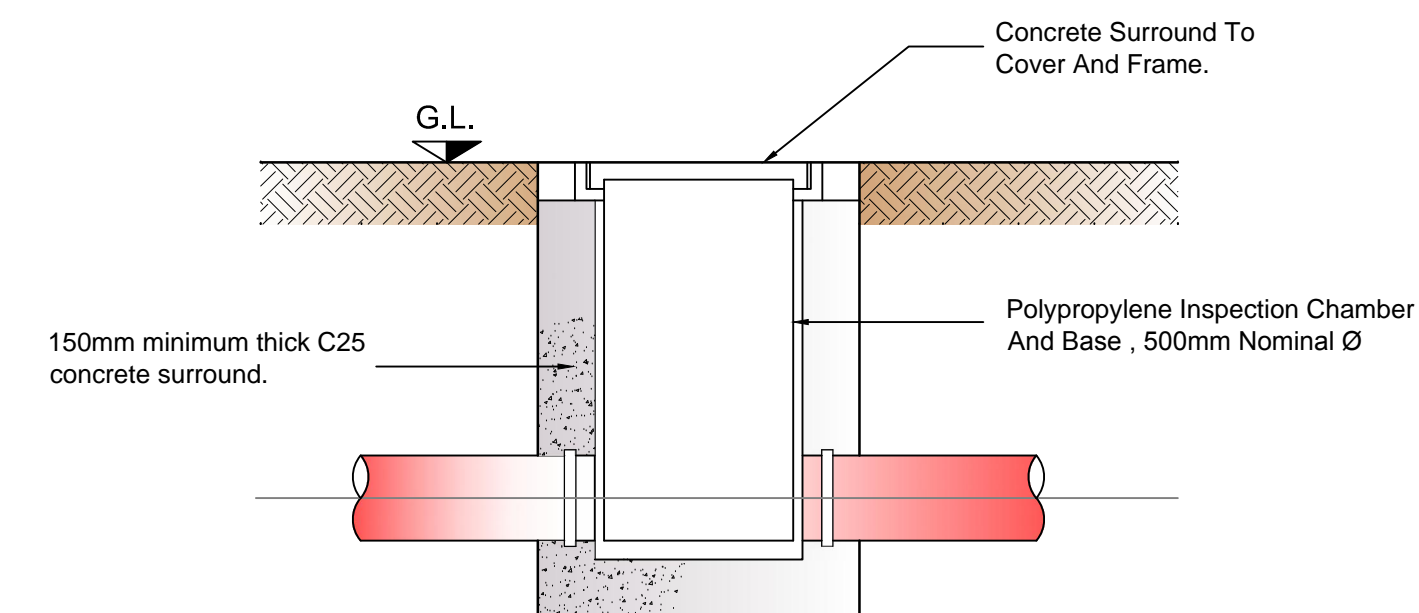
ALL PIPES TO BE 100MM Ø PIPE @ MIN 1:80 FALL UNLESS NOTED OTHERWISE.



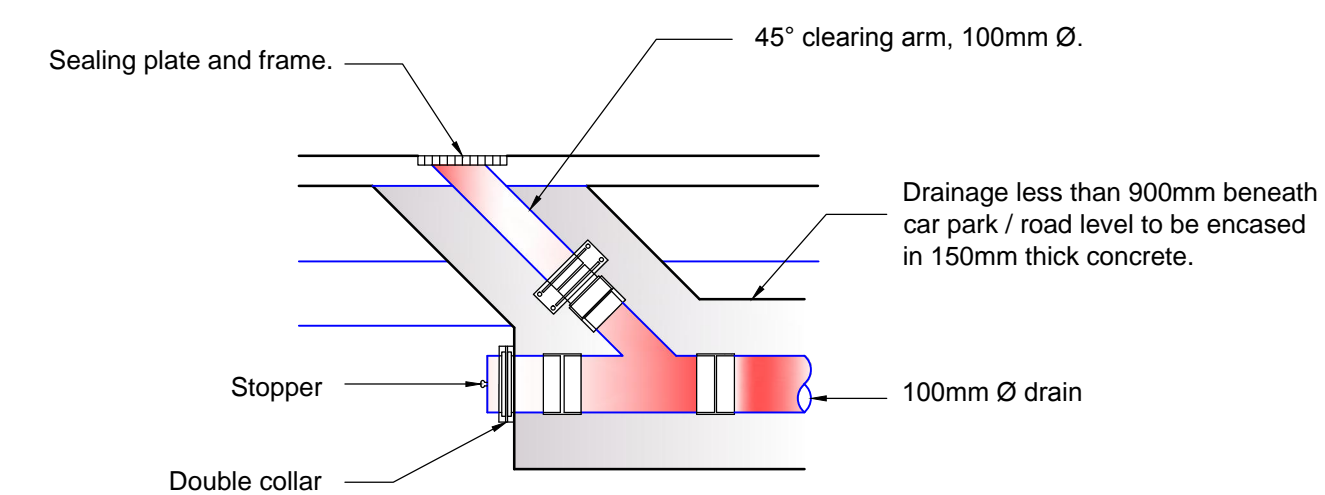
Proposed Drainage Plan Scale 1 : 100



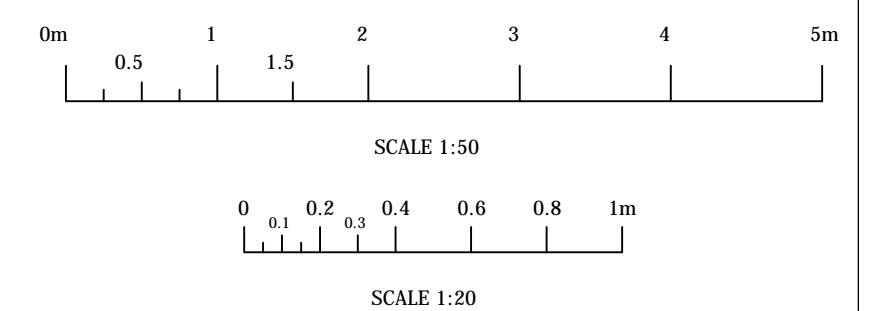
Section Through Soakaway Scale 1 : 20

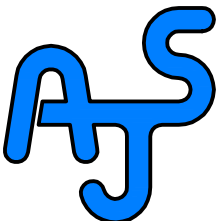


Polypropylene Inspection Chamber Scale 1 : 20



Rodding Eye Detail Scale 1 : 20



| Rev. | Revision Description | Drm | | Date |
|---|----------------------|-----------------------|--|------------|
| <div><p>A.J.S. Structural Design</p><p>62 Carter Street Uttoxeter Staffs. ST14 8EU</p><p>Tel: 01889 568056 Fax: 01889 568005</p></div> | | | | |
| Project: Aston-on-Trent Pavilion Aston-on-Trent Derbyshire | | | | |
| Title: Proposed Drainage Plan | | | | |
| Drawn by: BD | | Date: May 2016 | | Index No.: |
| Scales: As Shown Paper Size A1 | | | | |
| Drawing No: A2680 - 100 | | | | Revision |