

Calthorpe Park Play Area

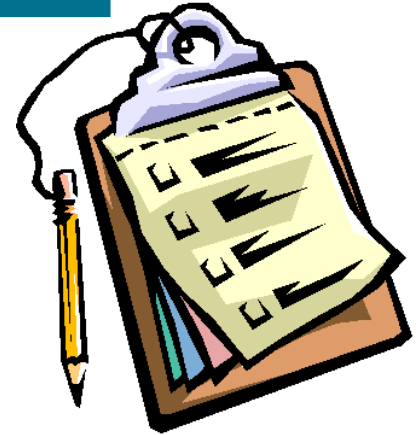
Open Day for Bidders

Monday 25th November 2019

11am Start



WELCOME



- Welcome to Bidders @ the Harlington
- Presentation at the Harlington
- The Project team
- Overview of Fleet
- Visions and Aim
- FTC approach to a new play area
- Green Spaces / Other play areas
- Calthorpe Park
 - Works to include
 - The Area
 - Football Pitches
 - Drainage
- Procurement process
- Evaluation model
- Questions
- Tour of the Park - Optional

The Project Team



Councillor Bob Schofield
Chairman to the Council

Katherine Booker
Procurement Officer



Councillor Paul Einchcomb
Chairman of the RLA Committee



Janet Stanton
Town Clerk



Ben Crane
Facilities & Open Spaces Manager



Wendy Allen
Office Manager

Overview of Fleet

- Fleet – 37 miles SW of London - Population 27000
- Voted best place to live by Halifax for 5 years (2011-2015)
- Town Council formed in 2010; 18 councillors
- Responsible for 5 parks, 1 cemetery, amenity land, tennis courts
- Also responsible for
 - The Harlington – a multipurpose arts/entertainment and community centre.
 - Ancells Farm Community Centre

Vision and Aims

Vision

The Council's vision is to provide high quality services while providing best value for the taxpayer and improve our environment.

Aims

- To provide green spaces within the town for the benefit of the community, visitors and wildlife.
- To deliver quality services that provide value for money
- To provide an environment where residents, children and visitors are pleased to live and work
- To promote healthy living
- A town residents are proud to call home!



Fleet Town Council's Approach to Play Ground Installation

- Exciting and unique
- Provide a wide range of play experiences
- A safe space for children of all ages and abilities to play
- Accessible to both disabled and non-disabled children
- Meet community needs
- Allow children of different ages and abilities to play together
- Build in opportunities to experience risk and challenge
- Allow for change and evolution
- A good & clever use of space
- Promote & Protect Wildlife
- Provide Disabled Access
- To blend in with the vista of the area
- Services performed in accordance with all legislative requirements
- Each park within Fleet to have its own unique character & wow factor

Green Spaces & Other FTC Play Areas



Calthorpe Park



Basingbourne Park



The Views



Ancells Farm



Edenbrook



Oakley Park

Calthorpe Park

The Works will include:

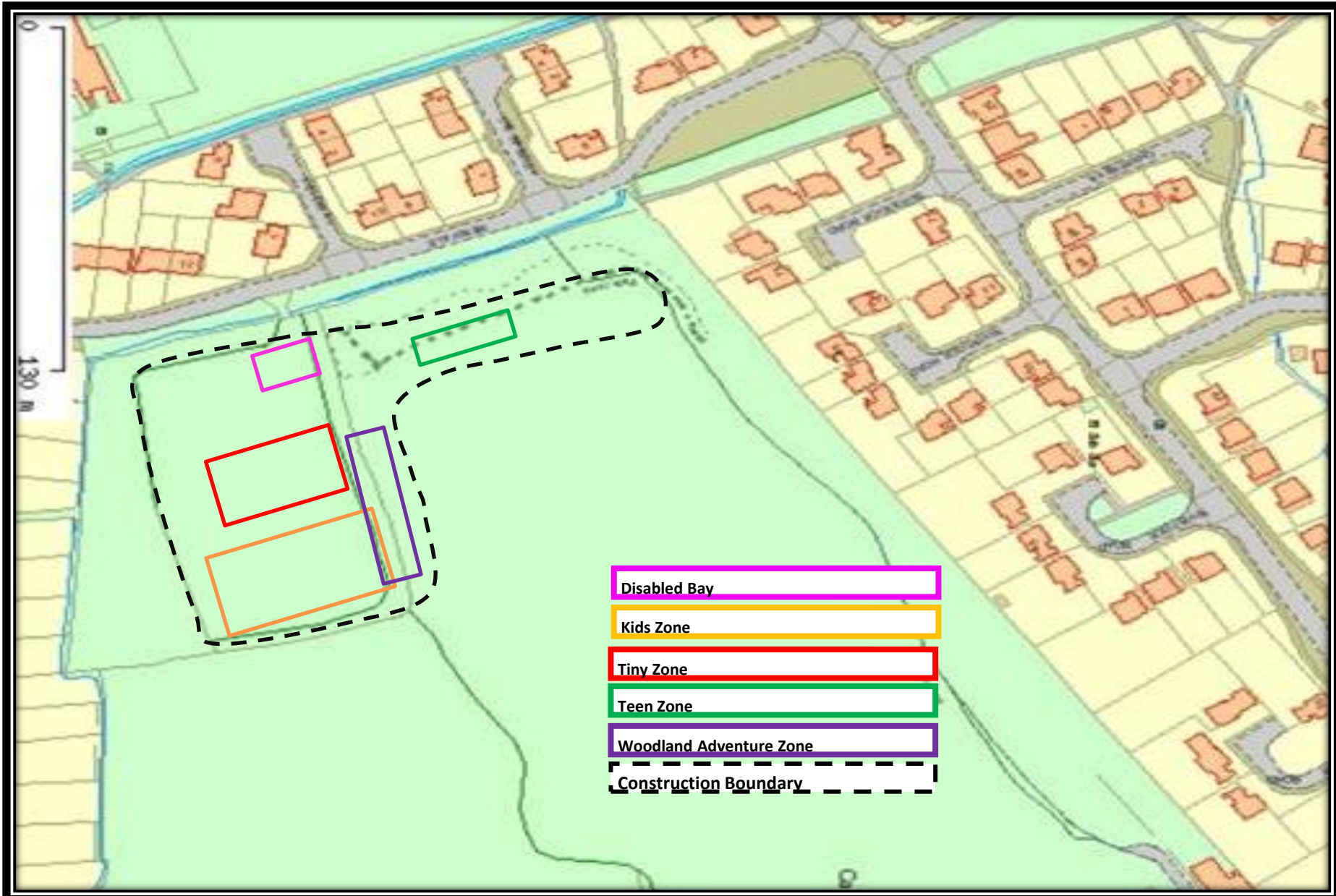
- The design, installation and layout of play areas according to the design brief
- Details of the proposed safety surfacing.
- Supply of appropriate drawings to show proposed layouts including the incorporation of all equipment and site furniture.
- Design and layout of Footpaths.
- Details of hard and soft landscaping works including a disabled vehicle parking area as indicated in the design (Drawing 3).
- A priced schedule of work covering the design, supply and installation of all play equipment, furniture, safety surfaces and associated ground and landscaping works.
- Design of links between areas / play zones.

Calthorpe Park

The Survey

- Engaged with 3 local Schools –
 - Calthorpe Park School
 - All Saints Junior School
 - Tavistock Infants
- Engaged with the local youth group – Fleet Phoenix
- Hand delivered surveys to all houses surrounding the park
- We put the survey online
- The survey requested the age of the respondent of the casting views
- The survey asked what equipment they would like to see in each zone
- The survey asked respondents what their highest priorities should be

Calthorpe Park-The Area (indicative)



Calthorpe Park

The Area

- Lower Field



Calthorpe Park

The Area

- Woodland Area – Old ditch fully covered



Calthorpe Park

The Area

- Upper Field
- In the 1960's, Calthorpe Park was being used as a land fill rubbish site. This site was capped and covered with clay and top soil. Since then the ground has settled, causing the surface to be undulating in some areas.



Calthorpe Park

The Area - Football

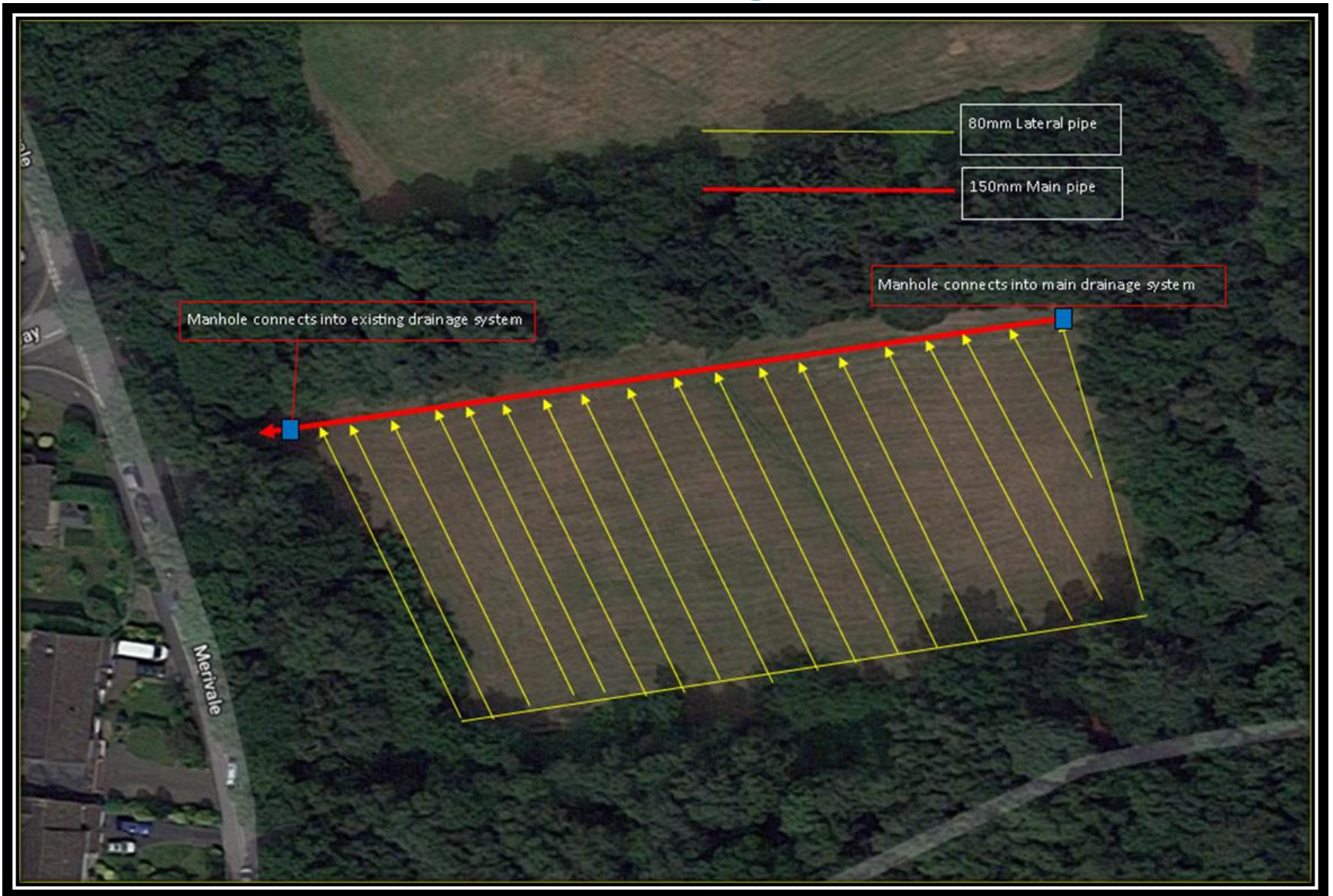


Drainage

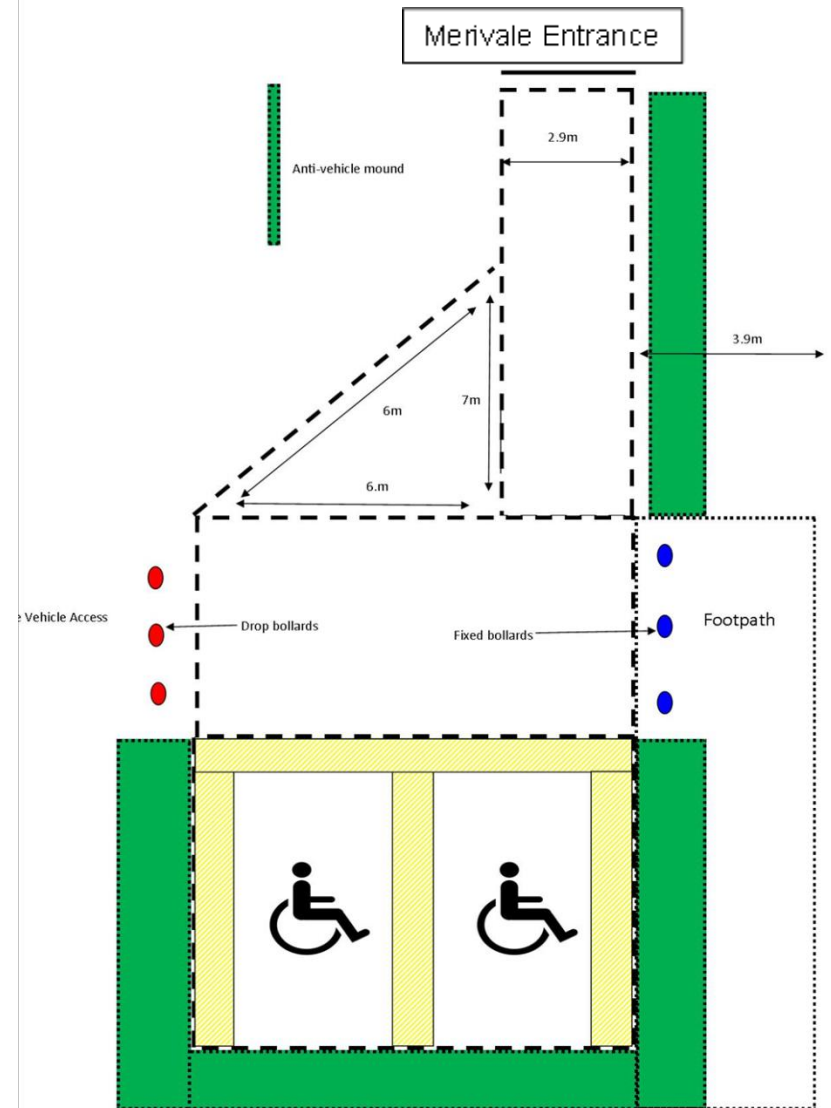
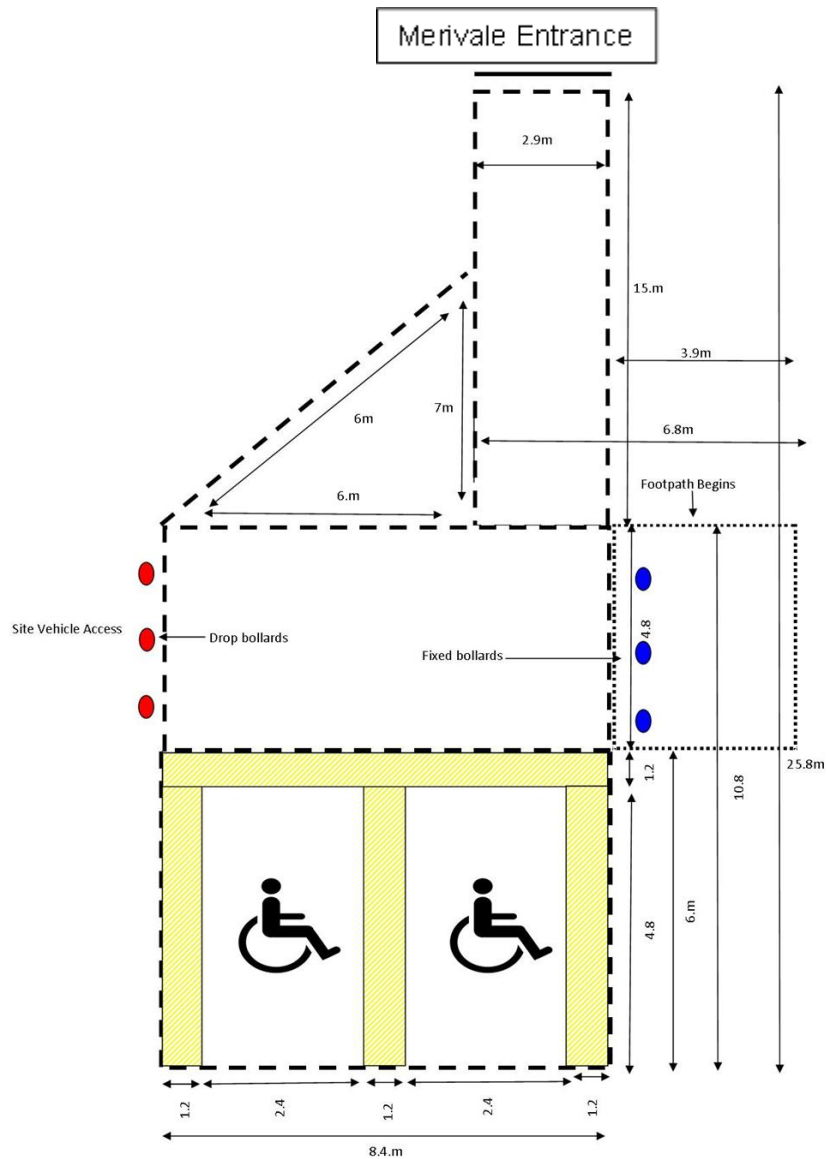


- The lower field area of the park (south west corner of the site immediately adjacent to Merivale has recently had a full land drainage system designed and installed to reduce the risk of surface water flooding. The main collector drain runs along the northern boundary of the field and laterals run in a NW-SE direction at 5m intervals.
- The drainage ditch running along the northern boundary of the lower field has been in filled incorporating a perforated drainage pipe and permeable surround.
- It is a crucial part of the tender that any surface water issues are addressed.

Drainage



Disabled Parking



The Procurement Process

- Contract is being procured under the PCR 2015
- Open tender
- Procurement Portal- all documentation, questions and answers, submissions on here
- Evaluation will take place the middle of January 2020
(Price is kept separate to the method statement responses)
- Intend to award Feb 2020
- Contract to start Early Feb 2020
- Points awarded for faster completion

The Procurement Process

Make sure you have:

- Read all documentation
(including the terms and conditions)
- Visited the site
- Asked any questions by **20th Dec 2019**
- Responded to all the questions in the tender
- Completed the form of tender
- Returned your submission on time (6 hard copies and electronically)

Evaluation model

- Contract will be awarded to the tender considered the most advantageous to the residents of Fleet
- Design – 30%
- Subjective – 35%
- Technical – 15%
- Corporate – 15%
- Price – 5%
- Use - “ We will” / “We Shall”
- Following quality and financial evaluation, scores will be combined to provide a ranked list
- No post tender negotiation after price submitted

Evaluation model

Design -	30%	
Appeal of Design		10%
Adherence to Design Brief		10%
Paths & Accessibility		10%
Subjective-	35%	
Range of Equipment		10%
Key Feature Pieces		10%
Accessible / Disabled Play		5%
Adult Seating / Social Area		5%
Ancillary Items, e.g. Bins, Benches, Fencing		5%
Technical-	15%	
Ground Contours / Use of Spoils		5%
Orientation / Positioning / Use of Space		5%
Maintenance / Availability of Spares		5%
Corporate-	15%	
Method Statements		5%
Timescale / Project Plan		5%
Experience		5%
Price -	5%	

Questions



- We are happy to accept questions now
- Any questions after today should be entered onto Contract Finder / OJEU
- Last date for questions is midday **20th Dec 2019**

Thank you

**Please ensure you have left your
contact details before you leave**