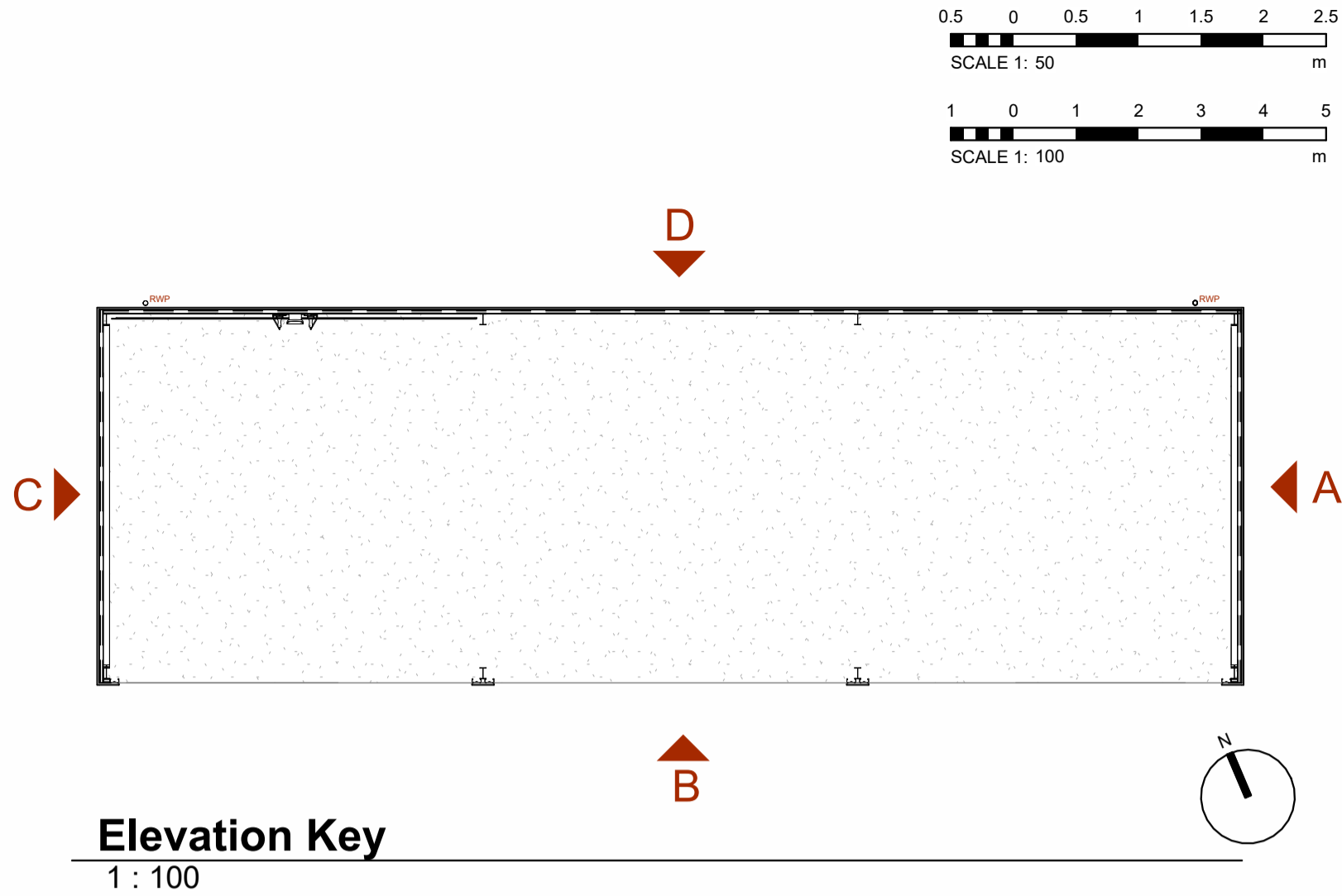
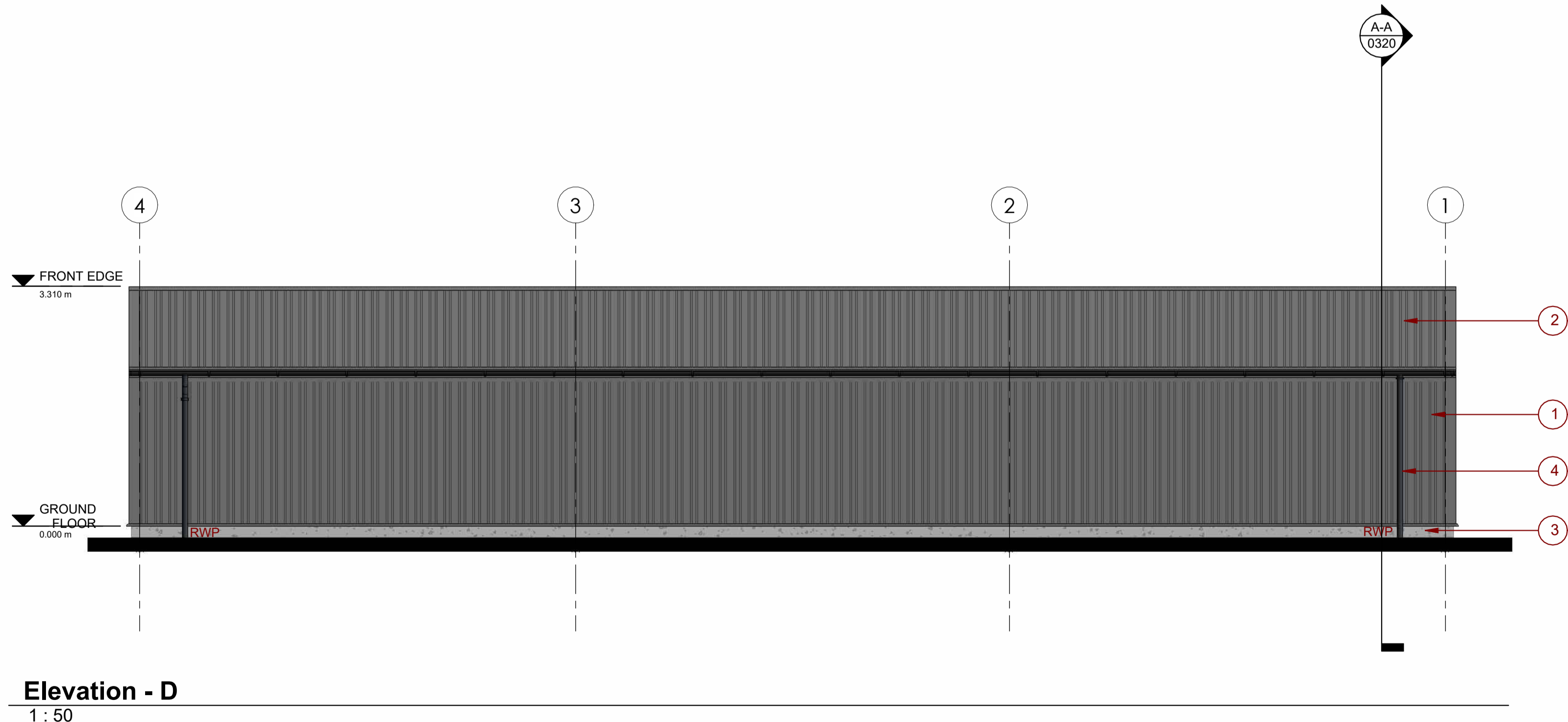
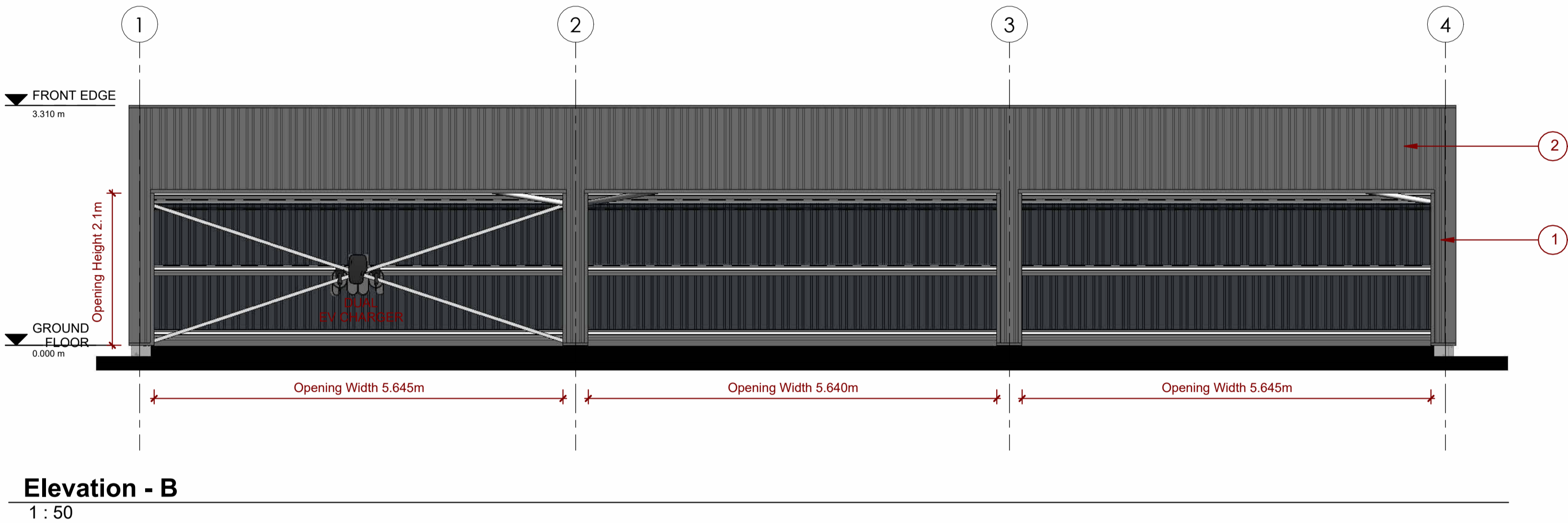
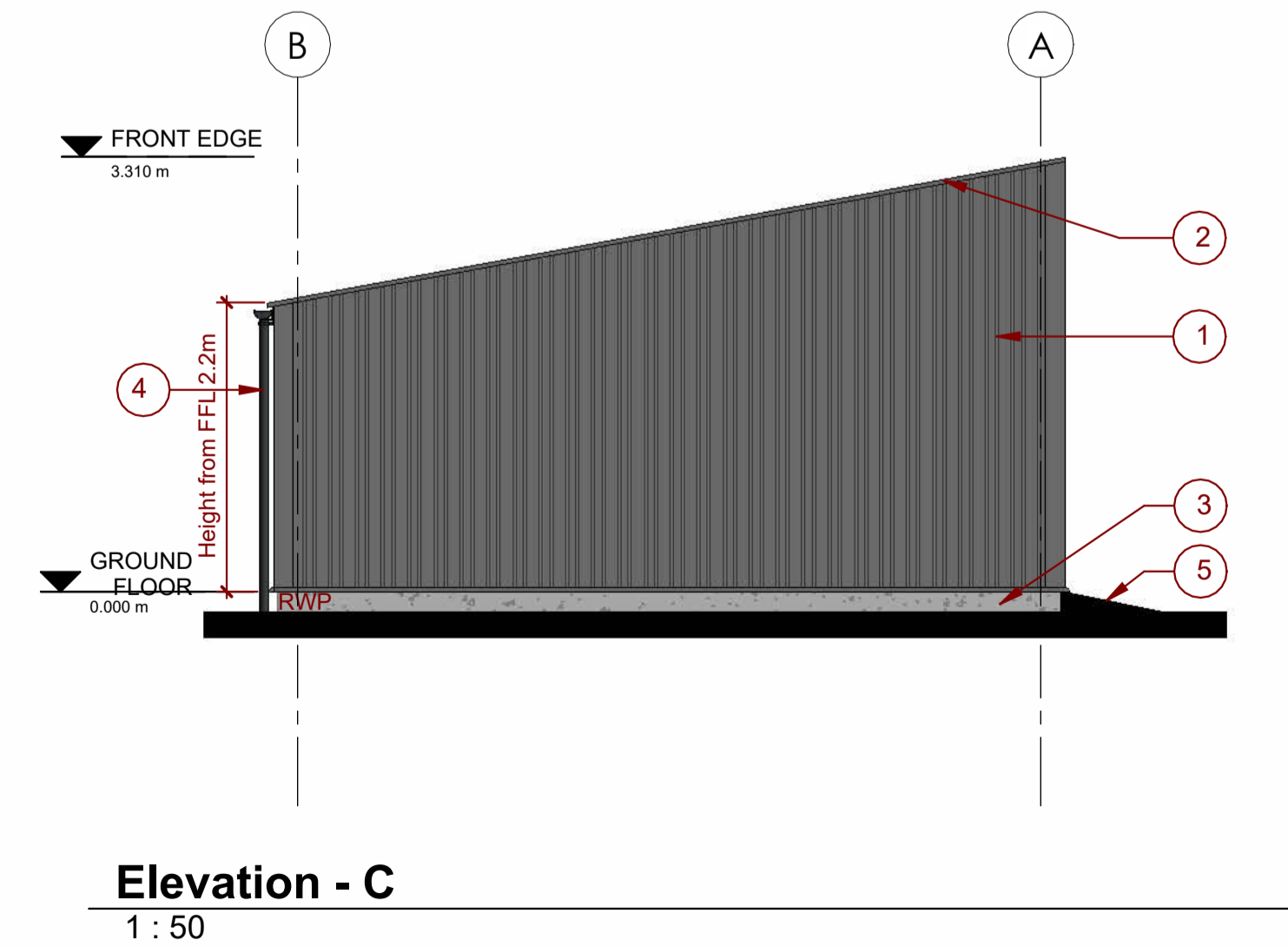
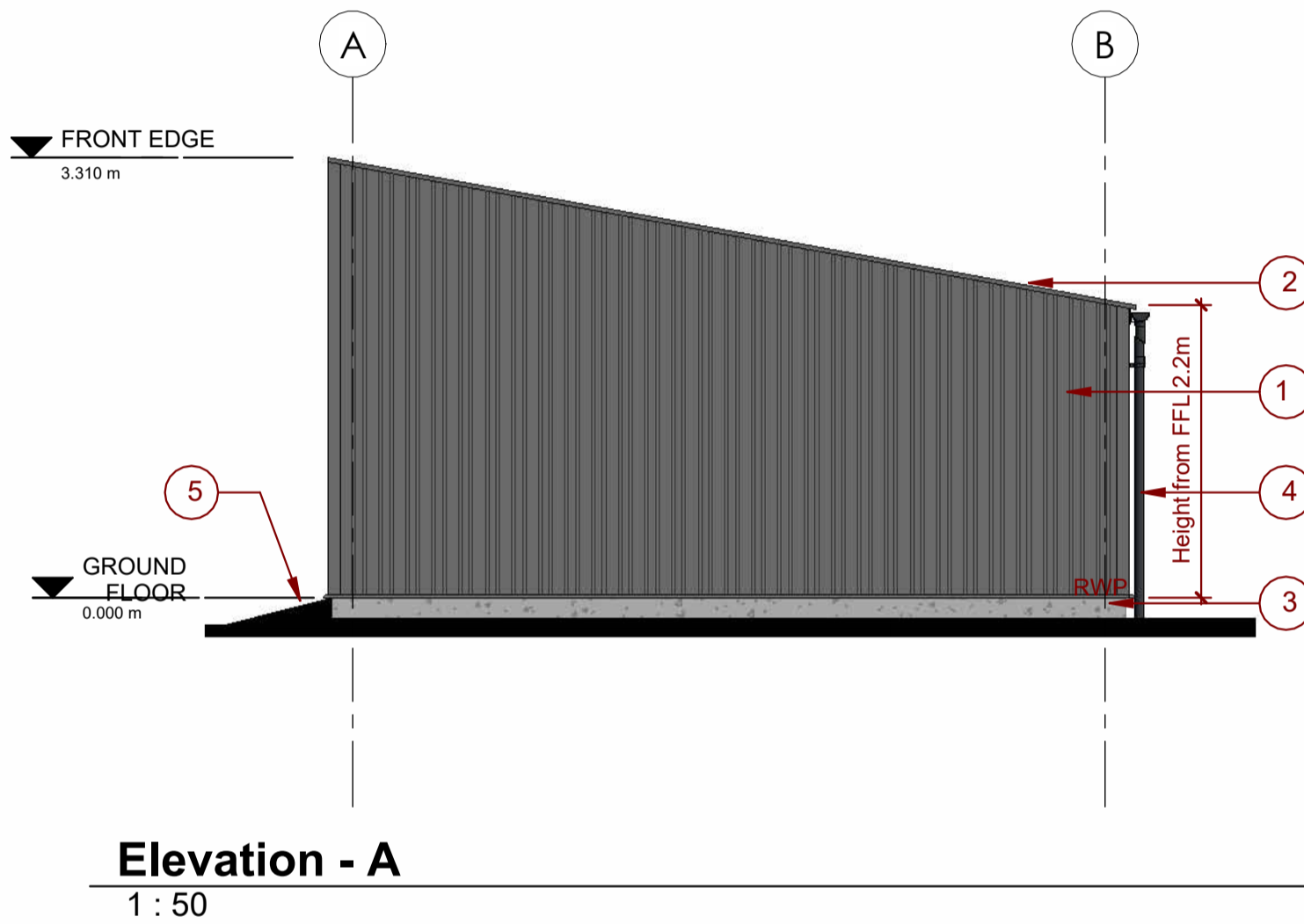


- 1 32mm profile height Cladco, or similar approved, 32/1000 trapezoidal single skin 0.7mm vertical cladding sheets.
External facing material: PVC Plastisol coating, colour tbc.
External profile: 32 mm high trapezoidal profile.
One fix construction to cladding rail system. Lightweight cladding rails to SE specification
Guidance for specification option:
System depth: 32mm profile height.
System weight: 6.9 kg/m²Approx.
- 2 32mm profile height Cladco, or similar approved, 32/1000 trapezoidal single skin 0.7mm roofing sheets.
External facing material: PVC Plastisol coating, colour tbc.
External profile: 32 mm high trapezoidal profile.
One fix construction to cladding rail system
Guidance for specification option:
System depth: 32mm profile height.
System weight: 6.9 kg/m²Approx.
- 3 Slab to Car Port:
Concrete ground bearing slab, to SE Details
1200 gauge DPM on sand blined. Min. 150mm thick compacted clean crushed imported Type1 subbase. Refer to SE drawings for details.
- 4 Guttercrest, or similar approved, 130mm Aluminium half round guttering with 75mm round downpipes. Polyester powder coated finish, Satin finish, colour TBC.
- 5 Concrete ramped access in Car port. Brushed surface finish. Aco F900 Heavy duty channel drain across each vehicle access threshold.



DISCLAIMER NOTES:

DO NOT SCALE THIS DOCUMENT - USE FIGURED DIMENSIONS ONLY

ALL DIMENSIONS MUST BE CHECKED ON SITE PRIOR TO COMMENCEMENT OF ANY RELATED WORKS.

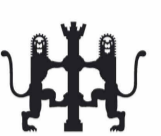
THIS DOCUMENT IS COPYRIGHT OF THE ORIGINATOR, IT MUST NOT BE ALTERED, REPRODUCED OR DISTRIBUTED WITHOUT PRIOR CONSENT.

THIS DOCUMENT MUST BE READ IN CONJUNCTION WITH ALL SUPPORTING DOCUMENTS PRODUCED BY THE ORIGINATOR AND OTHER PROJECT DISCIPLINES.

OS MAPPING OBTAINED FROM PROMAP LICENCE No. 100022432
REPRODUCED BY BERRYS UNDER OS LICENCE No. 100003668

THIS MODEL IS SUPPLIED FOR INFORMATION AND COORDINATION PURPOSES ONLY, AND CANNOT BE RELIED UPON FOR ACCURATE CONSTRUCTION, SPECIFICATION, OR COMMERCIAL INFORMATION - THIS SHOULD BE OBTAINED FROM THE SUPPORTING PROJECT DOCUMENTATION

NORTH POINT:

RIBA 
Chartered Practice

ORIGINATING OFFICE

BERRYS
42 HEADLANDS
KETTERING
NORHAMPTONSHIRE
NN15 7HR
01536 412464

www.berrys.uk.com

REV	DESCRIPTION	BY	CHKD	DATE
BERRYS				
STATUS: TENDER				
CLIENT: WITNEY TOWN COUNCIL				
PROJECT: WEST WITNEY SPORTS GROUND - NEW DEPOT				
TITLE: CAR PORT PROPOSED ELEVATIONS				
SCALE @ A1: As indicated	MODELLED BY: TH	CHECKED BY: DH	DATE: 02/06/25	
DRAWING No:				
PROJECT: KA53125	ORG: BRY	LEVEL: XX	TYPE: EL	DIS: A
NUMBER: 0220				REV: