

Legend:

- LV —

LV CABLE BASKET RUN ABOVE CV
- DT —

DATA CABLE BASKET RUN ABOVE CV
- △

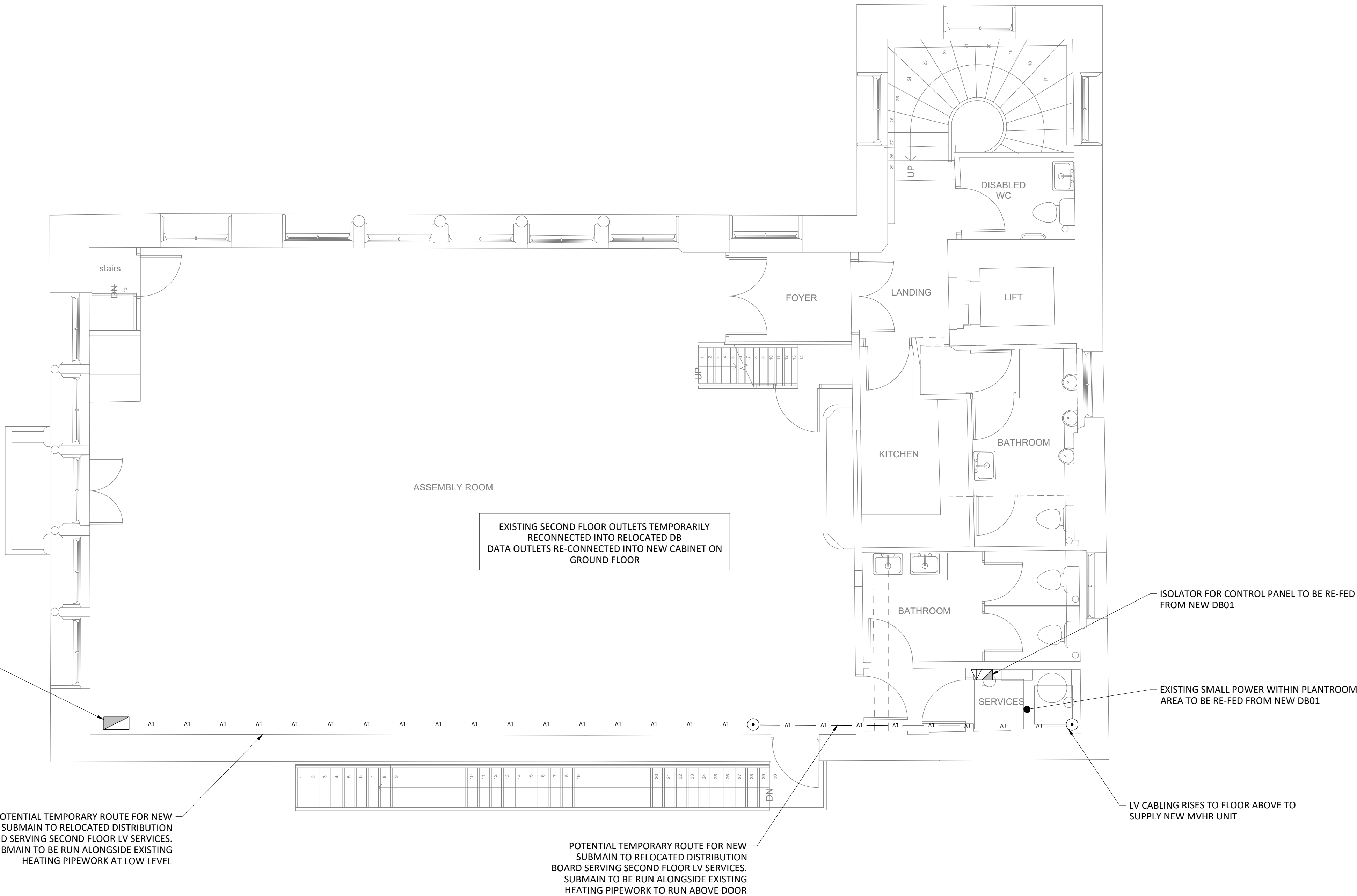
SINGLE DATA OUTLET (SDO)
- ▨

DISTRIBUTION BOARD
- ⏏

THREE PHASE ISOLATOR

Notes:

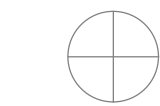
1. THIS DRAWING SHALL BE READ IN CONJUNCTION WITH ALL OTHER DRAWINGS, SPECIFICATIONS, SCHEDULES AND BUILDING MODELS INCLUDING SCHEMATICS. THE CONTRACTOR SHALL REFER TO THE ARCHITECTS DRAWINGS FOR SETTING OUT DETAILS/DIMENSIONS.
2. THE ELECTRICAL SERVICES INSTALLATIONS ARE DESIGNED TO COMPLY FULLY WITH THE BUILDING REGULATIONS STANDARDS, AND ARE DESIGNED IN ACCORDANCE WITH THE RECOMMENDATIONS OF THE CIBSE GUIDES, AS ISSUED BY THE CHARTERED INSTITUTION OF BUILDING SERVICES ENGINEERS.
3. REFER TO THE ARCHITECTS DRAWINGS FOR DETAILS OF ALL BUILDING FIRE COMPARTMENTATION BARRIERS. ANY SERVICES PENETRATING THE FIRE COMPARTMENT SHALL BE FIRE SEALED USING THE APPROVED PENETRATION DETAIL.
4. ALL PENETRATIONS THROUGH FIRE WALLS SHALL BE FIRE STOPPED TO MAINTAIN THE FIRE INTEGRITY OF THE FIRE WALL. ALL SLAB PENETRATIONS TO HAVE FIRE STOPPING TO MAINTAIN THE INTEGRITY OF THE FIRE RATED SLAB. THE CONTRACTOR SHALL MAKE GOOD ALL PENETRATIONS TO THE APPROVAL OF BUILDING CONTROL.
5. THIS DRAWING SHALL NOT BE USED FOR INSTALLATION. THE ELECTRICAL SERVICES CONTRACTOR SHALL BE RESPONSIBLE FOR PRODUCTION OF COORDINATED INSTALLATION DRAWINGS CHECKED WITH ACTUAL SITE DIMENSIONS.
6. ALL DIMENSIONS WHERE INDICATED ARE IN MILLIMETRES UNLESS STATED OTHERWISE. ALL DIMENSIONS SHALL BE CHECKED ON SITE PRIOR TO COMMENCEMENT OF ANY WORKS.
7. ALL CABLES TO BE WITHIN VOIDS UNLESS OTHERWISE STATED.



POTENTIAL NEW LOCATION OF RELOCATED FF DISTRIBUTION BOARD IN ORDER TO MINIMISE WORKS REQUIRED TO EXISTING CABLING. ELECTRICIAN TO CONFIRM WHETHER EXISTING CABLING ON SF CAN BE PULLED BACK TO THIS LOCATION. NEW SUPPLY TAKEN OFF PANELBOARD (PB01) ON GROUND FLOOR

POTENTIAL TEMPORARY ROUTE FOR NEW SUBMAIN TO RELOCATED DISTRIBUTION BOARD SERVING SECOND FLOOR LV SERVICES. SUBMAIN TO BE RUN ALONGSIDE EXISTING HEATING PIPEWORK AT LOW LEVEL

POTENTIAL TEMPORARY ROUTE FOR NEW SUBMAIN TO RELOCATED DISTRIBUTION BOARD SERVING SECOND FLOOR LV SERVICES. SUBMAIN TO BE RUN ALONGSIDE EXISTING HEATING PIPEWORK TO RUN ABOVE DOOR



SAFETY, HEALTH & ENVIRONMENTAL INFORMATION
FOR DETAILS OF SITE-WIDE AND GENERAL RISKS, TO BE READ IN CONJUNCTION WITH THESE NOTES, SEE THE CONTRACT DOCUMENTS AND, WHERE WORKS ARE NOTIFIABLE, THE PRE-CONSTRUCTION INFORMATION
IN ADDITION TO THE RISKS NORMALLY ASSOCIATED WITH THE TYPES OF WORK DETAILED ON THIS DRAWING, NOTE THE FOLLOWING RISKS AND INFORMATION:
CONSTRUCTION: C1.Asbestos - Refer to DHRA for details C2.Electrocution from working on live services - Refer to DHRA for details C3.Working at height to install services - Refer to DHRA for details
DISMANTLING/DEMOLITION (FUTURE): D1. D2. D3.
IT IS ASSUMED THAT ALL WORKS WILL BE CARRIED OUT BY A COMPETENT CONTRACTOR WORKING, WHERE APPROPRIATE, TO AN APPROVED METHOD STATEMENT

THIS DRAWING IS NOT TO BE USED FOR CONSTRUCTION. INSTALLATION DRAWINGS SHOULD BE PRODUCED BY THE CONTRACTOR AND AGREED WITH THE CLIENT TEAM PRIOR TO ANY INSTALLATION WORK

Rev	Date	By	Chk	Aprvd	Description
-----	------	----	-----	-------	-------------

PROJECT
Midsomer Norton Town Hall

CLIENT

Bath & North East
Somerset Council



www.methodllp.com Bristol Tel: 0117 203 5160

DRAWING TITLE
Small Power & Data Services
Second Floor

STATUS
S2 - FOR TENDER

DATE	SCALE	DRWN BY	CHK BY	APVD BY
21.10.21	1:50 - A1	ARG	DMS	DMS
DRAWING NUMBER	REVISION No.			
1716PMN-MET-P1-02-DR-E-6203	S2 - T01			

Scaling Note: Do NOT scale from this drawing.