

“A new space for the community, for Nature Recovery, for People, and for Health and Wellbeing”

Park Gerry Revitalisation Masterplan

The Park Gerry Revitalisation project aims to improve this local green space and community asset, making it a central point for Nature REcovery within the town, and making nature more accessible to everyone, encouraging outdoor activity for health and wellbeing.

The local park’s open green space will be preserved, and we’ll also add improved sports, and community facilities to promote social, health, and well-being benefits. It also aims to improve the connection of this space to others within the area, improving the visibility of the park through way-finding within the surrounding urban environment,



AERIAL PHOTO OF THE EXISTING SITE.



“A new space for the community, for Nature Recovery, for People, and for Health and Wellbeing”

Park Gerry Revitalisation Masterplan

Dynamic Community Recreation Areas

The northern fields in Park Gerry will host sport-focused areas, conveniently accessible from the northeast car park and the east cycle/pedestrian link. This approach ensures the southern fields remain dedicated to quieter activities.

Newly constructed facilities include a wheeled sports facility with a spectator section, a multi-use games area, and outdoor gym and social spaces.

The football pavilion will provide access to changing and food preparation facilities housed in the new community hub building.

- 1 Skatepark
- 2 Mixed Use Games Area
- 3 Community hub building
- 4 Football pitch (full size)
- 5 Sensory gardens / gateway
- 6 Gym equipment
- 11 Main car park
- 12 Overflow car park



Accessible pathways connect these spaces, offering various seating options, some with overhead shelters, promoting social interaction for all. An eastern entrance features a sensory garden celebrating the town’s culture and heritage, acting as a welcoming gateway to the park.



The park’s open, wooded edge ambiance is preserved around the sports areas, featuring open green spaces and augmented tree planting throughout.

A newly established perimeter path connects different areas within the park, providing seating for spectators. Additionally, bike stands are strategically placed to encourage visitors who are connected to the park through new cycle path links.

“A new space for the community, for Nature Recovery, for People, and for Health and Wellbeing”

Park Gerry Revitalisation Masterplan

Natural Habitat and Wildlife Areas

The southern field in Park Gerry is designed with nature and wildlife in mind, and for quieter, tranquil activities, with enhanced planting areas for habitats and biodiversity.

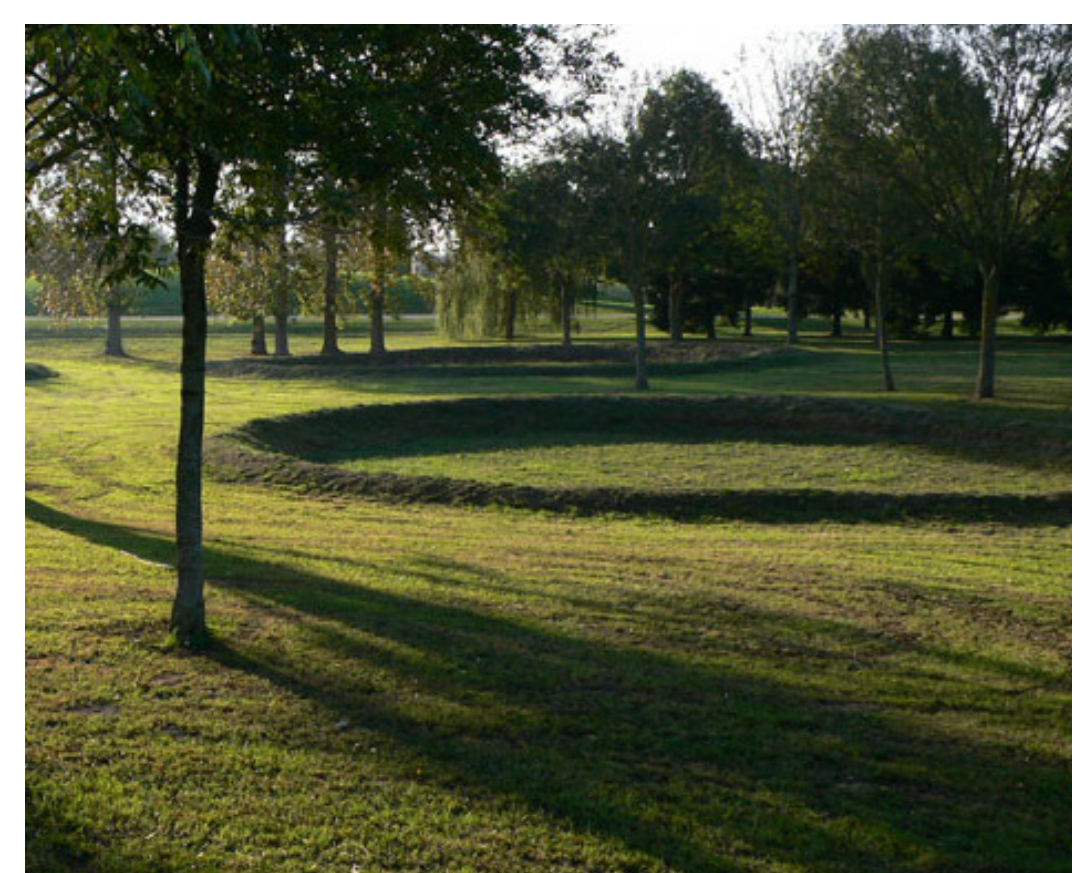
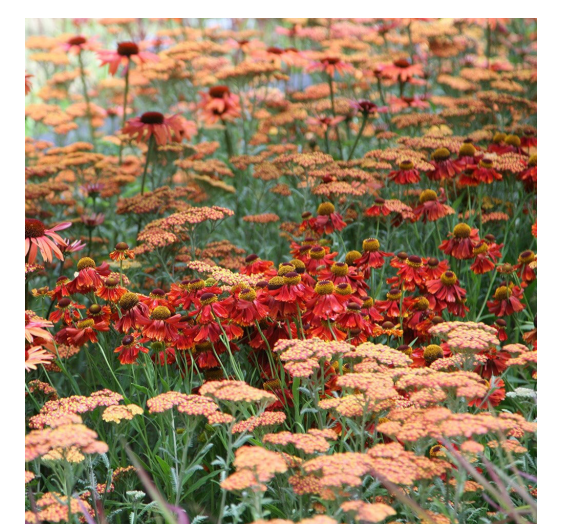
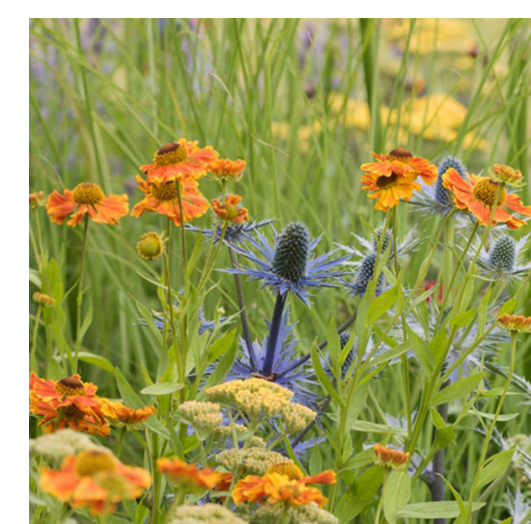
Additional tree planting offers screening, enriching the landscape without enclosing it. Cultural interpretation is provided through sculptures made from natural woodland materials.

Natural play structures, benches, and picnic areas are strategically placed along the accessible perimeter path, weaving through wild flower patches to attract pollinators and wildlife, creating an inclusive, beautiful space for nature and for people.

- 7 Wildflower ‘round’
- 8 Picnic areas along path in patches of wildflower meadow
- 9 Natural play equipment set in patches of wildflower meadow
- 10 Nature path running perimeter of field



A new perimeter path links the meadow space to the rest of the park.



Open meadows with wildflower patches create a biodiverse environment for exploration, play, rest, socializing, and reconnecting with nature.

A wildflower ‘round’ offers a space for performances or informal gatherings.

“A new space for the community, for Nature Recovery, for People, and for Health and Wellbeing”

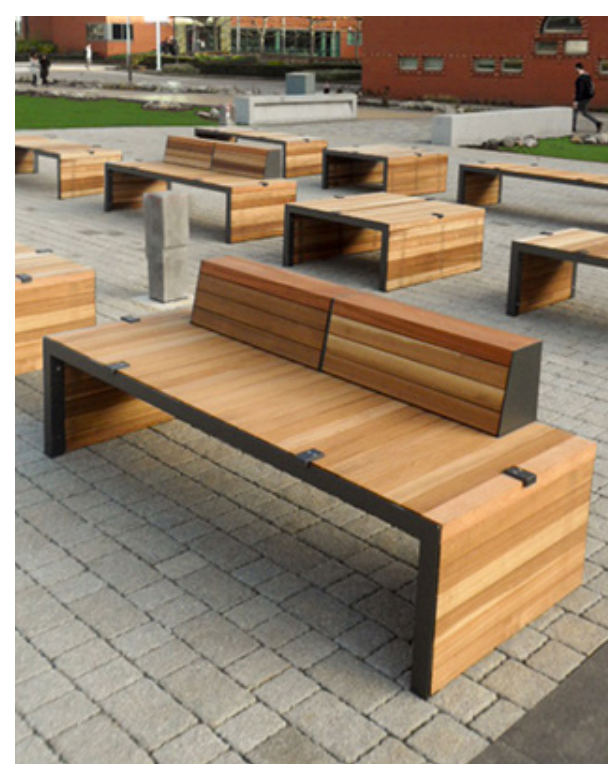
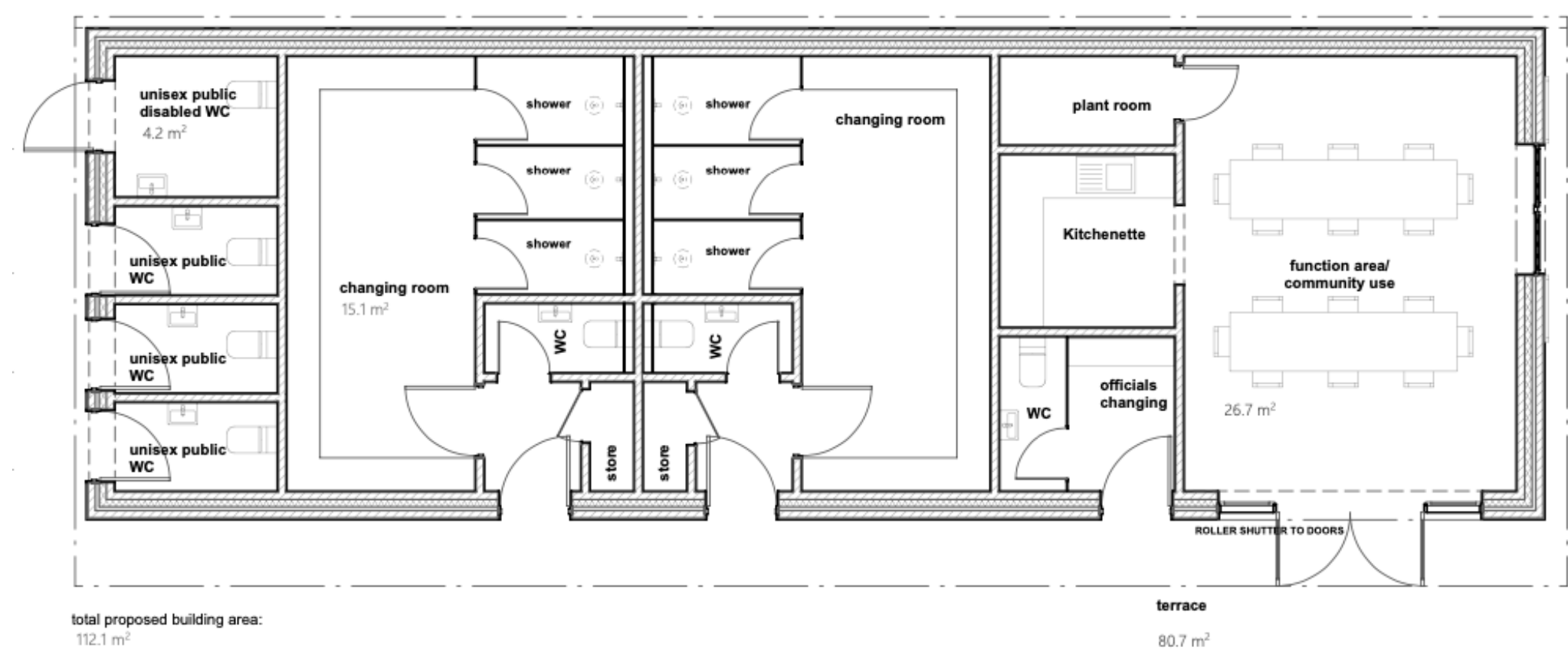
Park Gerry Revitalisation Masterplan

Community Hub Building

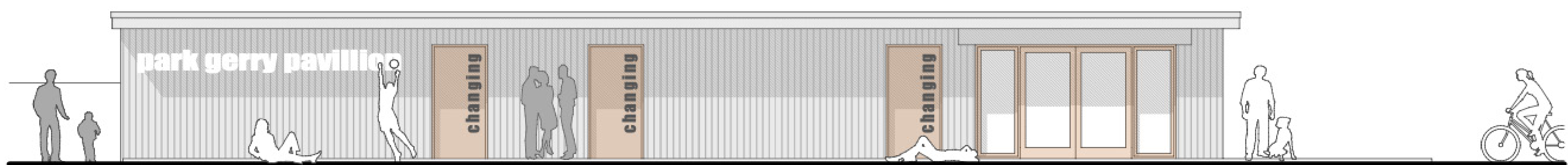
The Pavilion Community Hub will be a versatile space available for community and sports groups for events. Designed to meet the needs of the local community and attract visitors from afar, the proposals allow for future expansion with additional floor plans.

The hub will include both indoor and outdoor seating, storage facilities for movable furniture, a kitchen for food and drink preparation, and changing facilities with showers for football matches. Fully accessible public conveniences are situated here, accessible even when the main community hub is closed.

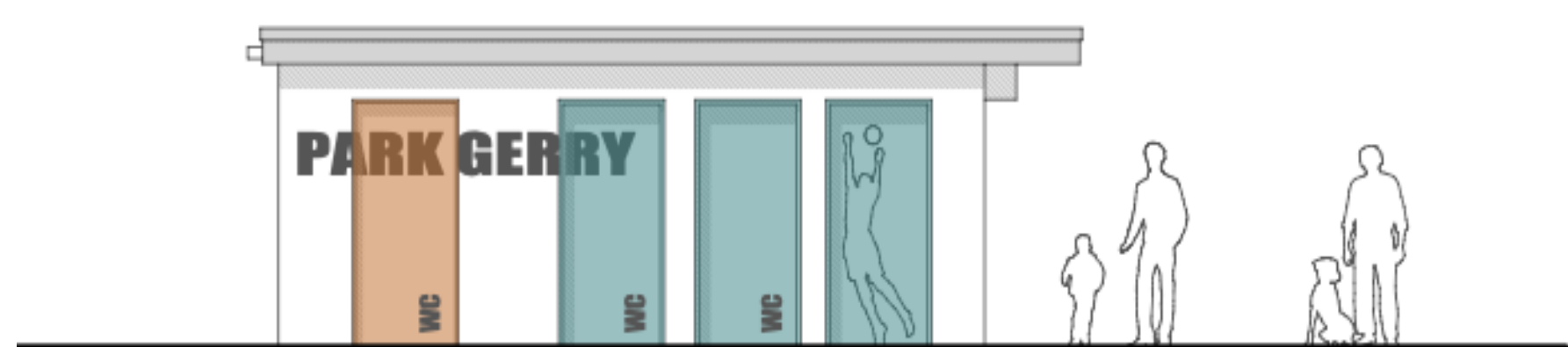
Overlooking the football pitch, is grassed amphitheatre-style terraced spectator seating.



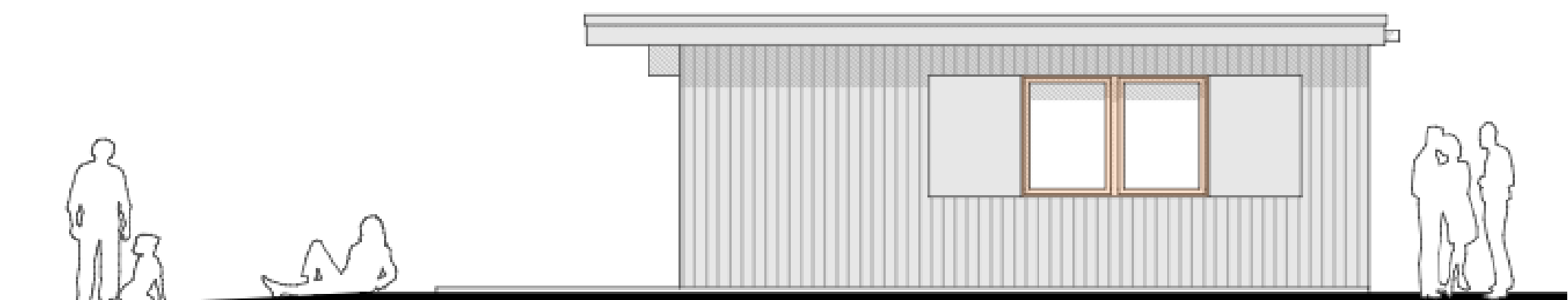
The building to be clad in corrugated steel, reflecting the industrial mining heritage, with vibrant splashes of color for a contemporary, energizing, yet earthy feel that complements the parkland setting.



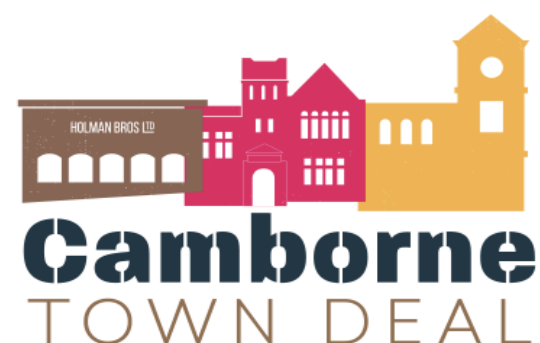
South elevation



East elevation



West elevation



MEI LOCI

“A new space for the community, for Nature Recovery, for People, and for Health and Wellbeing”

Park Gerry Revitalisation Masterplan

Skate Park

Canvas Spaces, a company specialising in consulting, design, and construction, particularly focused on concrete skateparks and related spaces, is currently in the process of designing and developing the skate park. It is being developed with skateability for all ages in mind!

The park’s design aims for a discreet presence by incorporating a low-profile layout, complemented by mounding and planting to the east. This strategic placement serves to minimize both visual and noise disturbances within the park.

The Skate park elements will be broken up and softened with areas of planting and trees, and furniture, to create a welcoming and inclusive space.



An aerial view of the Skate park, set within the parkland setting.

