

REINFORCED CONCRETE RETAINING WALL

RW-01=

USE: AS DETAILED IN RETAINING WALL DETAILS

MUST BE TAKEN DOWN IN MASS CONCRETE TO A DEPTH, WHICH HAS SUITABLE LOAD-BEARING CAPACITY IN GROUND BEARING TAKEN AS 200kN/m² (MUST BE AGREED BY LOCAL AUTHORITY BUILDING INSPECTOR ON SITE PRIOR TO POURING), WHERE PRELIMINARY PASSES THROUGH, FOUNDATIONS TO BE STEPPED 300mm SHOOT OF PIPE EACH SIDE AND PRECAST CONCRETE LINELITS FORMED TO SUPPORT MANHOLE OVER, WHERE FOUNDATIONS STEP STEP HEIGHT NOT GREATER THAN THE THICKNESS OF THE FOUNDATION AND OVER LAPPED BY TWICE THE HEIGHT OF THE STEP OR 300mm WHATEVER IS GREATER.

MASS CONCRETE

UNLESS OTHERWISE STATED

DESIGNATE MIX

END3

82

DESIGNED MIX

ALL CONCRETE TO BE GRADE	= C28/35N/mm ²
NOMINAL MAXIMUM SIZE OF AGGREGATE	= 20mm
MINIMUM CEMENT CONTENT	= 380 kg/m ³
SLOPP	= S3
MAXIMUM FREE WATER/CEMENT RATIO	= 0.40
CHARLIERE CEMENT CLASS	= N/A
ALLOWABLE CEMENT COMBINATIONS	= CEM I, SPEC. IIA, IIB-S, IIB-V, IIB-B, IIB, IIB-BS, IIB-VB-S, IIB-VB-V, (CEN-1)

NOTE: RATE OF SAMPLING FOR COMPRESSIVE STRENGTH TESTS SHALL BE LESS THAN ONE PER DAY OF CURE FOR EACH DAY OF CURE. RATE OF SAMPLING FOR COMPRESSIVE STRENGTH TESTS SHALL BE LESS THAN ONE PER DAY OF CURE FOR EACH DAY OF CURE.

GRAVEL MIXED CONCRETE.

MUST BE USED FOR ALL REINFORCED CONCRETE AND MUST BE OBTAINED FROM A PLANT WHICH HOLDS A CURRENT CERTIFICATE OF ACCREDITATION UNDER THE QUALITY SCHEME FOR READY MIXED CONCRETE. EACH MIX MUST BE OBTAINED FROM THE SAME BATCH AND THE SAME PLANT. ALL DELIVERIES MUST BE IDENTIFIED BY ADDRESS (IF DELIVERED) TO SITE BEFORE ANY CONCRETE IS DELIVERED. RETAIN ALL DELIVERY NOTES FOR INSPECTION.

STEEL REINFORCEMENT.

UNLESS OTHERWISE STATED:

BAR/MESH LAP LENGTHS TO BE MINIMUM

10mm BAR = 400mm LAP
12mm BAR = 480mm LAP
16mm BAR = 650mm LAP
20mm BAR = 820mm LAP
25mm BAR = 1000mm LAP

50 MINIMUM COVERS TO ALL STEEL REINFORCEMENT (USE HIGH CHAIRS OR SHIMLAPS)

ALL REINFORCEMENT TO BE $f_y = 500N/mm^2$

ALL REINFORCEMENT TO BE WIRE TIED USING 12mm STAINLESS WIRE

WASDREX

UNLESS OTHERWISE STATED:

ALL MORTAR BELOW PIPE TO BE 1:3 / 4:3 (CEMENT: SAND).

ALL MORTAR ABOVE PIPE TO BE 1:1:6 (CEMENT: LIME: SAND).

ALL EXTERIOR WALLS BELOW PIPE TO BE CONSTRUCTED FROM 7.5N/mm² MORTAR.

JOINTS TO BE INSTALLED AT 6000 CENTRES.

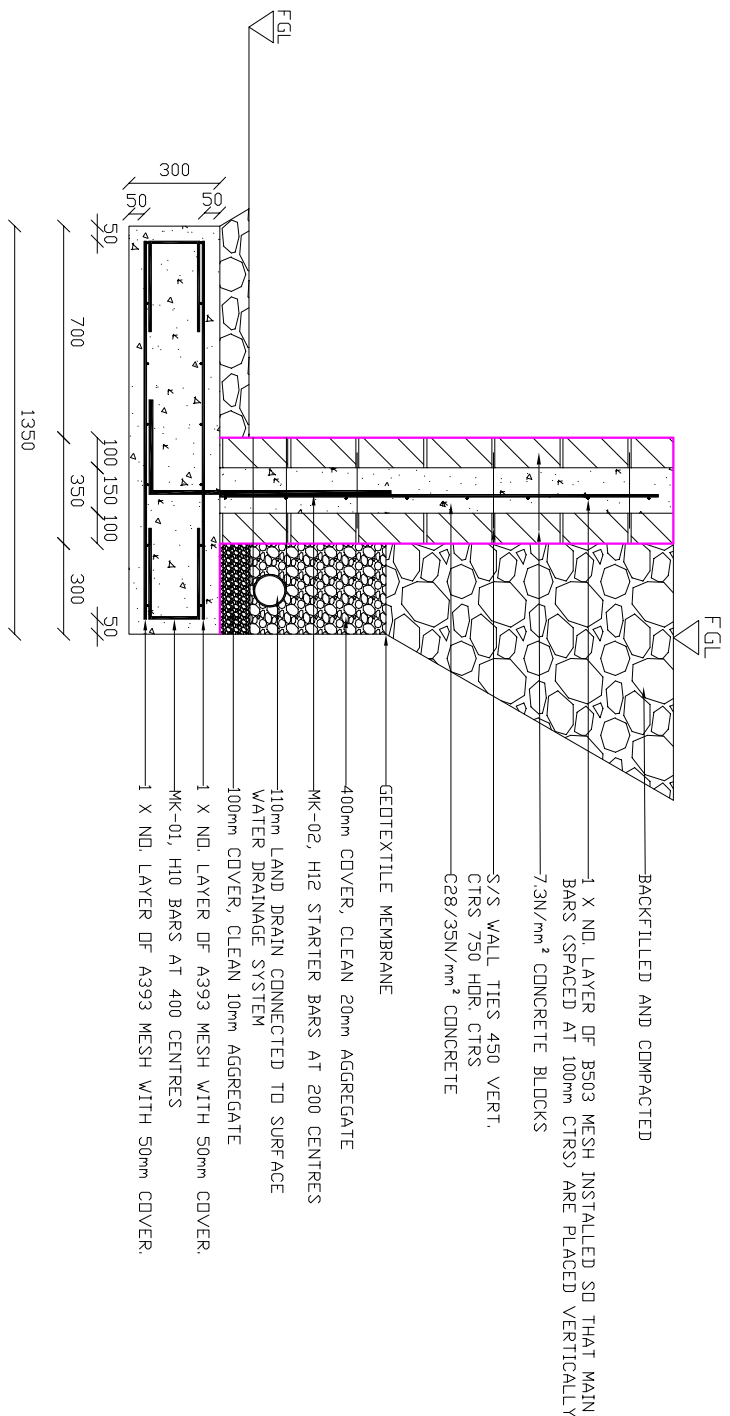
MAISONRY

UNLESS OTHERWISE STATED

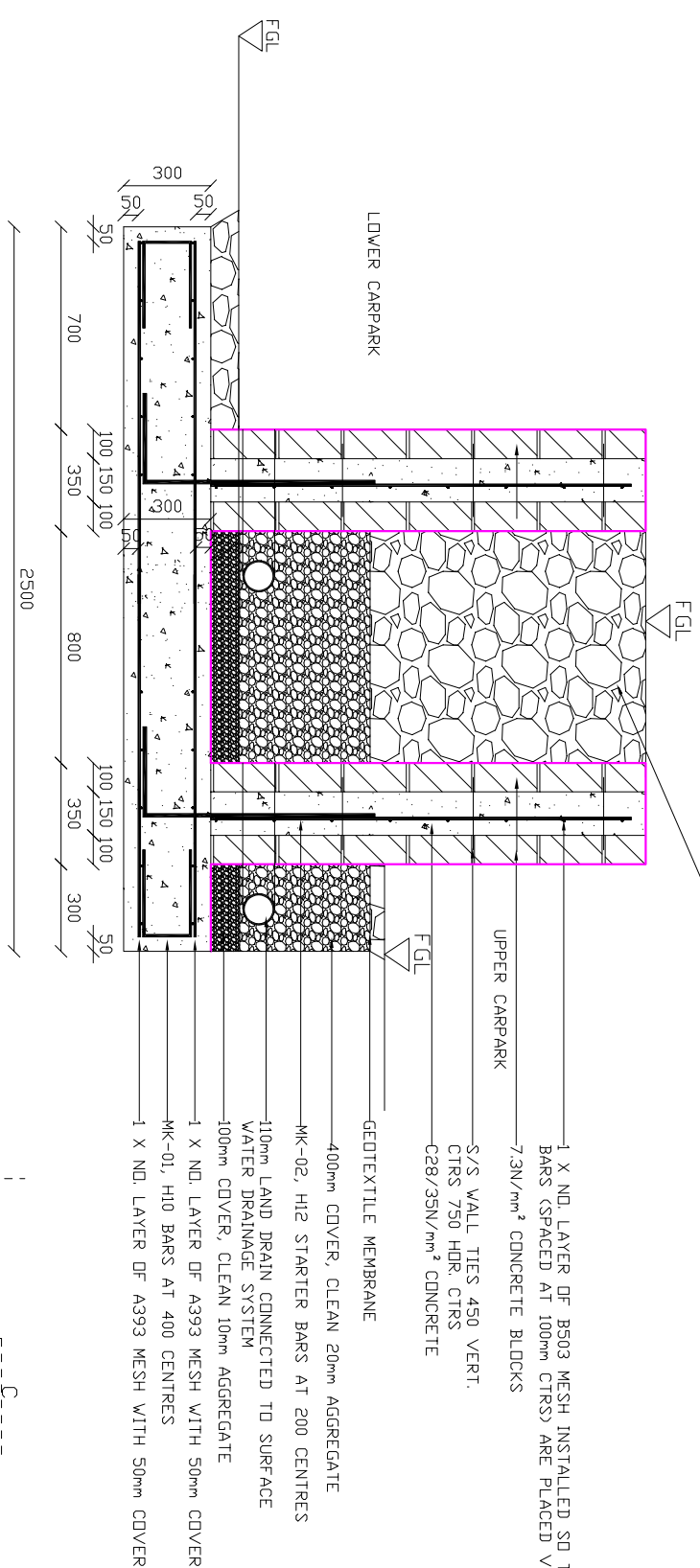
ALL MORTAR BELOW TO BE 1:3 / 4:3 (CEMENT:SAND)

ALL MURKIN ABOVE DPC TO BE 1:1.5 (CEMENT:CLIME:SAND).

MOVEMENT JOINTS TO BE INSTALLED AT 6000 CENTRES

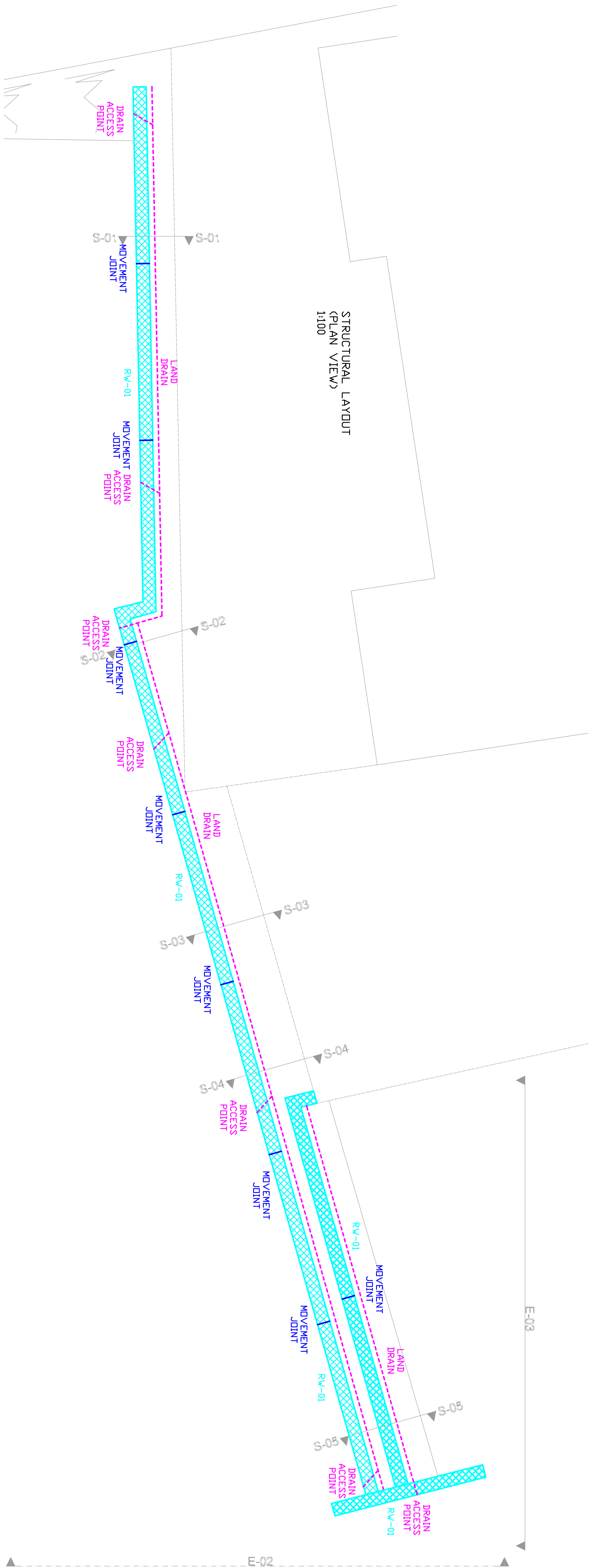


TYPICAL SECTION THROUGH RETAINING WALL-RW-0

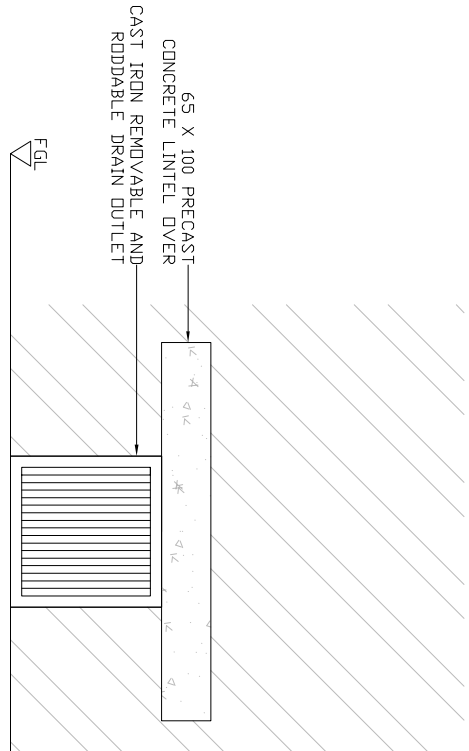
[illegible]

TYPICAL SECTION THROUGH RETAINING WALL AND PLANTER-RV-01

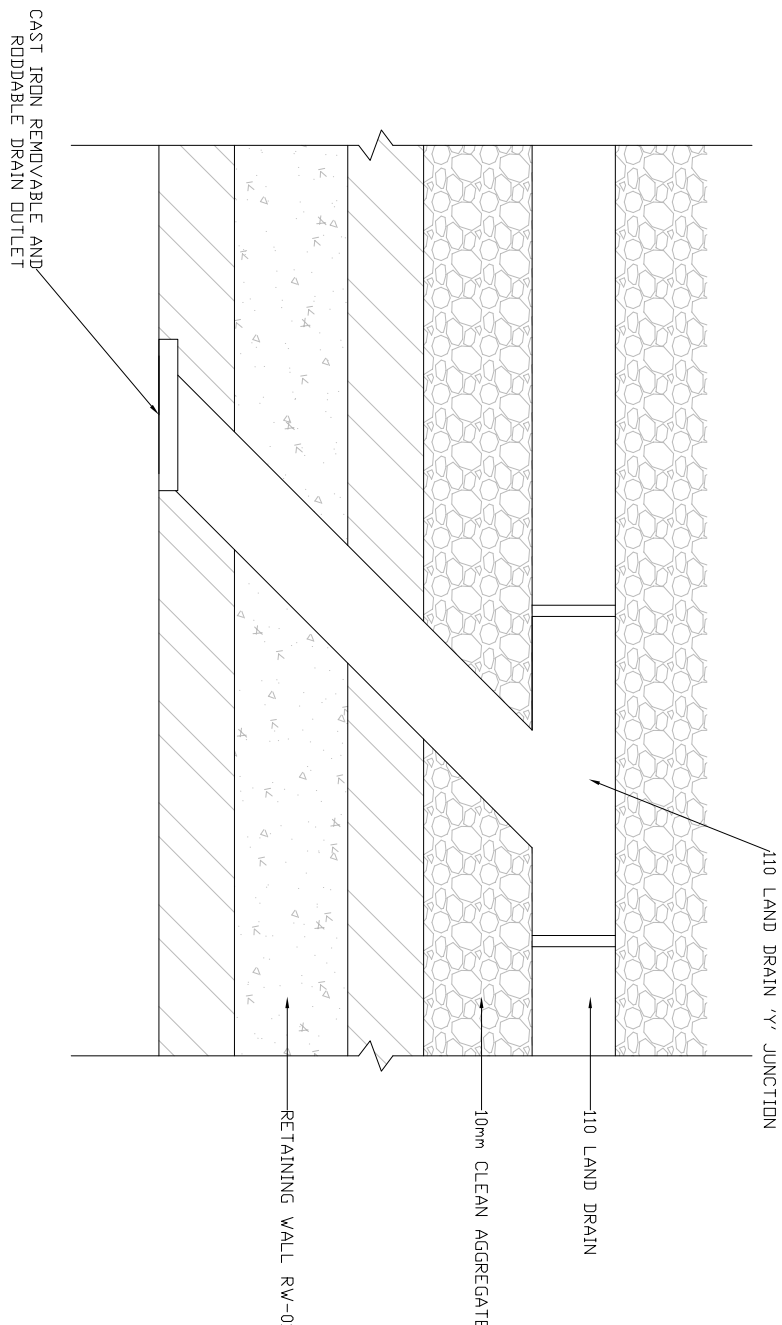
<p> N.B. TO BE USED FOR BENCHMARKING UP TO 100mm PERFORMING ADVISORY SERVICES TO ARCHITECTS DETAILS PERFORMING ADVISORY DETAILS AT 600mm PERFORMING ADVISORY DETAILS AT 1200mm PERFORMING ADVISORY DETAILS AT 2400mm PERFORMING ADVISORY DETAILS AT 4800mm PERFORMING ADVISORY DETAILS AT 9600mm PERFORMING ADVISORY DETAILS AT 19200mm PERFORMING ADVISORY DETAILS AT 38400mm PERFORMING ADVISORY DETAILS AT 76800mm PERFORMING ADVISORY DETAILS AT 153600mm PERFORMING ADVISORY DETAILS AT 307200mm PERFORMING ADVISORY DETAILS AT 614400mm PERFORMING ADVISORY DETAILS AT 1228800mm PERFORMING ADVISORY DETAILS AT 2457600mm PERFORMING ADVISORY DETAILS AT 4915200mm PERFORMING ADVISORY DETAILS AT 9830400mm PERFORMING ADVISORY DETAILS AT 19660800mm PERFORMING ADVISORY DETAILS AT 39321600mm PERFORMING ADVISORY DETAILS AT 78643200mm PERFORMING ADVISORY DETAILS AT 157286400mm PERFORMING ADVISORY DETAILS AT 314572800mm PERFORMING ADVISORY DETAILS AT 629145600mm PERFORMING ADVISORY DETAILS AT 1258291200mm PERFORMING ADVISORY DETAILS AT 2516582400mm PERFORMING ADVISORY DETAILS AT 5033164800mm PERFORMING ADVISORY DETAILS AT 10066329600mm PERFORMING ADVISORY DETAILS AT 20132659200mm PERFORMING ADVISORY DETAILS AT 40265318400mm PERFORMING ADVISORY DETAILS AT 80530636800mm PERFORMING ADVISORY DETAILS AT 161061273600mm PERFORMING ADVISORY DETAILS AT 322122547200mm PERFORMING ADVISORY DETAILS AT 644245094400mm PERFORMING ADVISORY DETAILS AT 1288490188800mm PERFORMING ADVISORY DETAILS AT 2576980377600mm PERFORMING ADVISORY DETAILS AT 5153960755200mm PERFORMING ADVISORY DETAILS AT 10307921510400mm PERFORMING ADVISORY DETAILS AT 20615843020800mm PERFORMING ADVISORY DETAILS AT 41231686041600mm PERFORMING ADVISORY DETAILS AT 82463372083200mm PERFORMING ADVISORY DETAILS AT 164926744166400mm PERFORMING ADVISORY DETAILS AT 329853488332800mm PERFORMING ADVISORY DETAILS AT 659706976665600mm PERFORMING ADVISORY DETAILS AT 1319413953331200mm PERFORMING ADVISORY DETAILS AT 2638827906662400mm PERFORMING ADVISORY DETAILS AT 5277655813324800mm PERFORMING ADVISORY DETAILS AT 10555311626649600mm PERFORMING ADVISORY DETAILS AT 21110623253299200mm PERFORMING ADVISORY DETAILS AT 42221246506598400mm PERFORMING ADVISORY DETAILS AT 84442493013196800mm PERFORMING ADVISORY DETAILS AT 168884986026393600mm PERFORMING ADVISORY DETAILS AT 337769972052787200mm PERFORMING ADVISORY DETAILS AT 675539944105574400mm PERFORMING ADVISORY DETAILS AT 1351079888211148800mm PERFORMING ADVISORY DETAILS AT 2702159776422297600mm PERFORMING ADVISORY DETAILS AT 5404319552844595200mm PERFORMING ADVISORY DETAILS AT 10808639105689190400mm PERFORMING ADVISORY DETAILS AT 21617278211378380800mm PERFORMING ADVISORY DETAILS AT 43234556422756761600mm PERFORMING ADVISORY DETAILS AT 86469112845513523200mm PERFORMING ADVISORY DETAILS AT 172938225691027046400mm PERFORMING ADVISORY DETAILS AT 345876451382054092800mm PERFORMING ADVISORY DETAILS AT 691752902764108185600mm PERFORMING ADVISORY DETAILS AT 1383505805528216371200mm PERFORMING ADVISORY DETAILS AT 2767011611056432742400mm PERFORMING ADVISORY DETAILS AT 5534023222112865484800mm PERFORMING ADVISORY DETAILS AT 11068046444225730969600mm PERFORMING ADVISORY DETAILS AT 22136092888451461939200mm PERFORMING ADVISORY DETAILS AT 44272185776902923878400mm PERFORMING ADVISORY DETAILS AT 88544371553805847756800mm PERFORMING ADVISORY DETAILS AT 177088743107611695513600mm PERFORMING ADVISORY DETAILS AT 354177486215223391027200mm PERFORMING ADVISORY DETAILS AT 708354972430446782054400mm PERFORMING ADVISORY DETAILS AT 1416709944860893564108800mm PERFORMING ADVISORY DETAILS AT 2833419889721787128217600mm PERFORMING ADVISORY DETAILS AT 5666839779443574256435200mm PERFORMING ADVISORY DETAILS AT 11333679558887148512870400mm PERFORMING ADVISORY DETAILS AT 22667359117774297025740800mm PERFORMING ADVISORY DETAILS AT 45334718235548594051481600mm PERFORMING ADVISORY DETAILS AT 90669436471097188102963200mm PERFORMING ADVISORY DETAILS AT 181338872942194376205926400mm PERFORMING ADVISORY DETAILS AT 362677745884388752411852800mm PERFORMING ADVISORY DETAILS AT 725355491768777504823705600mm PERFORMING ADVISORY DETAILS AT 1450710983537555009647411200mm PERFORMING ADVISORY DETAILS AT 2901421967075110019294822400mm PERFORMING ADVISORY DETAILS AT 5802843934150220038589644800mm PERFORMING ADVISORY DETAILS AT 11605687868300440077179289600mm PERFORMING ADVISORY DETAILS AT 23211375736600880154358579200mm PERFORMING ADVISORY DETAILS AT 46422751473201760308717158400mm PERFORMING ADVISORY DETAILS AT 92845502946403520617434316800mm PERFORMING ADVISORY DETAILS AT 185691005892807041234868633600mm PERFORMING ADVISORY DETAILS AT 371382011785614082469737267200mm PERFORMING ADVISORY DETAILS AT 742764023571228164939474534400mm PERFORMING ADVISORY DETAILS AT 1485528047142456329878949068800mm PERFORMING ADVISORY DETAILS AT 2971056094284912659757898137600mm PERFORMING ADVISORY DETAILS AT 5942112188569825319515796275200mm PERFORMING ADVISORY DETAILS AT 11884224377139650639031592550400mm PERFORMING ADVISORY DETAILS AT 23768448754279301278063185100800mm PERFORMING ADVISORY DETAILS AT 47536897508558602556126370201600mm PERFORMING ADVISORY DETAILS AT 95073795017117205112252740403200mm PERFORMING ADVISORY DETAILS AT 190147590034234410224505480806400mm PERFORMING ADVISORY DETAILS AT 380295180068468820449010961612800mm PERFORMING ADVISORY DETAILS AT 760590360136937640898021923225600mm PERFORMING ADVISORY DETAILS AT 1521180720273875281796043846451200mm PERFORMING ADVISORY DETAILS AT 3042361440547750563592087692902400mm PERFORMING ADVISORY DETAILS AT 6084722881095501127184175385804800mm PERFORMING ADVISORY DETAILS AT 12169445762191002254368350771609600mm PERFORMING ADVISORY DETAILS AT 24338891524382004508736701543219200mm PERFORMING ADVISORY DETAILS AT 48677783048764009017473403086438400mm PERFORMING ADVISORY DETAILS AT 97355566097528018034946806172876800mm PERFORMING ADVISORY DETAILS AT 194711132195056036069893612345753600mm PERFORMING ADVISORY DETAILS AT 389422264390112072139787224691507200mm PERFORMING ADVISORY DETAILS AT 778844528780224144279574449383014400mm PERFORMING ADVISORY DETAILS AT 1557689057560448288559148898766028800mm PERFORMING ADVISORY DETAILS AT 3115378115120896577118297797532057600mm PERFORMING ADVISORY DETAILS AT 6230756230241793154236595595064115200mm PERFORMING ADVISORY DETAILS AT 12461512460483586308473191190128230400mm PERFORMING ADVISORY DETAILS AT 24923024920967172616946382380256460800mm PERFORMING ADVISORY DETAILS AT 498460498419343452338</p>
--



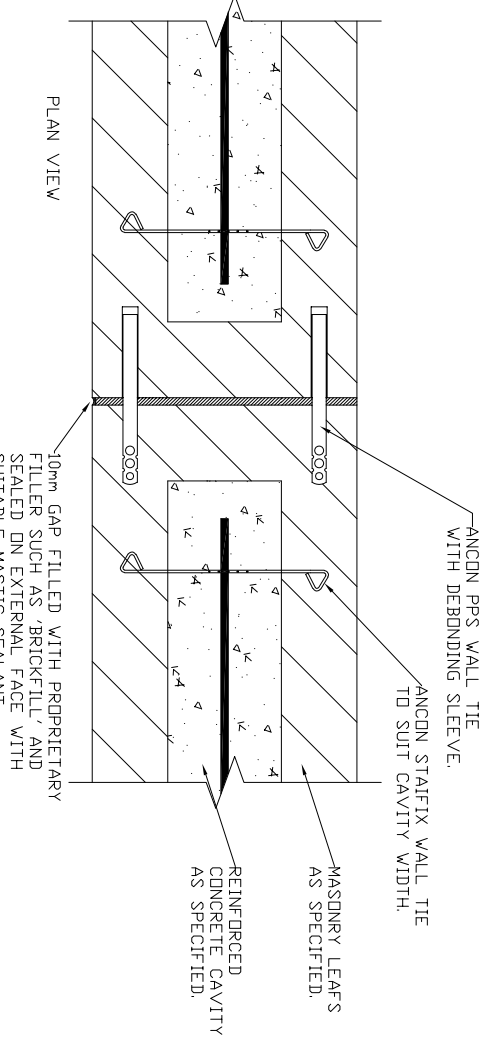
STRUCTURAL LAYOUT
(PLAN VIEW)
1:100



ELEVATION ON DRAIN OUTLET
SCALE: N/A



PLAN VIEW ON DRAIN OUTLET
SCALE: N/A



TYPICAL MOVEMENT JOINT
 SCALE: N/A
 NB. ALL PRODUCTS TO BE INSTALLED STRICTLY IN
 ACCORDANCE WITH MANUFACTURERS INSTRUCTIONS.

[illegible]

JSDesign Ltd	
This drawing is © JSD Design limited	
Head Office	
JSD Design Limited,	
58 Crown Road,	
Widewater Industrial Estate,	
Carmarthen,	
SA31 3SG	
Tel: (+44) 1292 216234	
Fax: (+44) 1292 216235	
Email: jsdesign@jsdesign.com	
Website: www.jsdesign.com	
Producing: Brian Watt at Watfalls Corpuk, Releasing: Watfalls Paperwork:	
Title	
Structural Layout & Details	
PROJECT NO.	
GAT	
DRAWING NO.	
SR	
SHEET NO.	
JK	
DATE	
10/01/2022	
REV	
B	