

4 Design Strategy

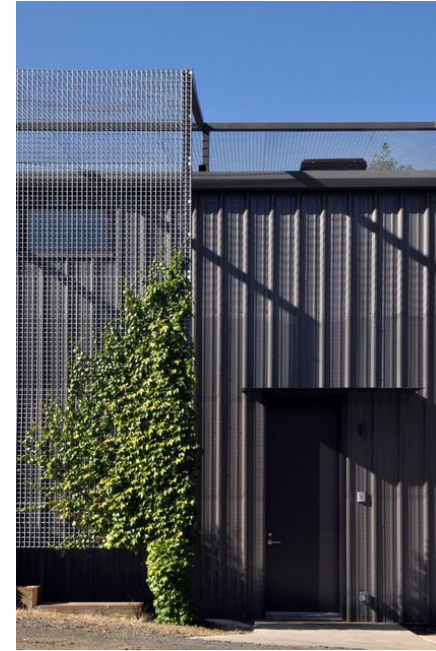
4.5 External Appearance

4.5.1 Contextual Response - First Thoughts



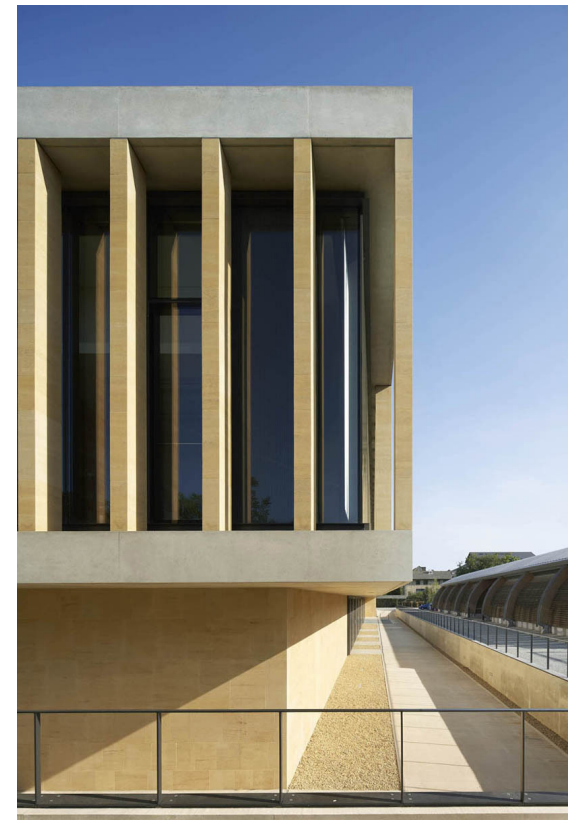
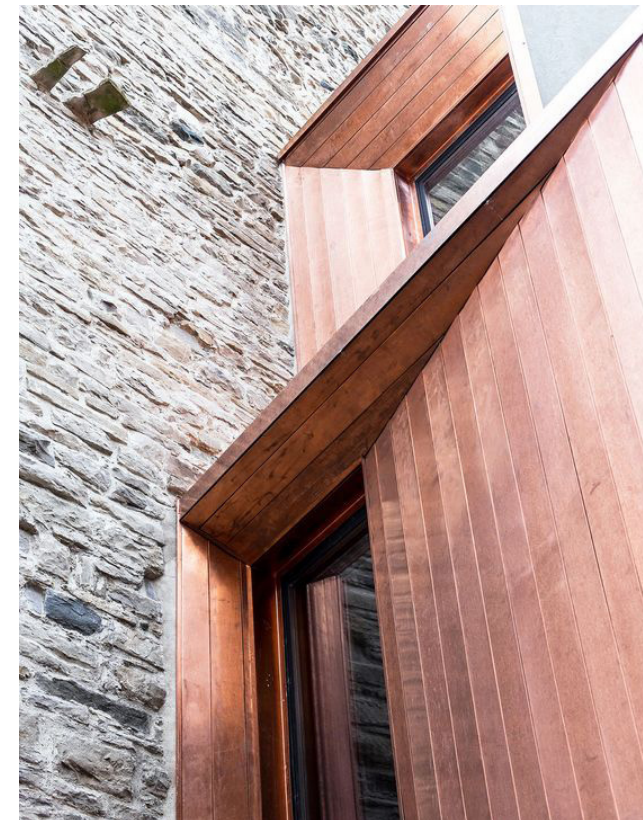
Brick/ Stone & Copper:

The use of London red brick across the Victorian Hospital buildings with stone reveals and quoins creates defined openings, edges and ornament. Feature arches and the use of symmetry create focal points for entrances. The copper clock tower is a key feature of the campus.



Grids:

Many of the buildings across the campus have a strong linear facade. Link bridges serve to further exaggerate the horizontal relationship between buildings.



These precedents are for illustrative purposes to capture the project aspirations for materiality and form and are subject to evaluation for affordability by the project team.

4 Design Strategy

4.6 Design Sketches

4.6.1 Atrium



Sketch impression of the atrium with an active stair and atrium entrance space below



Sketch impression of how the linear atrium creates an active space through the height of the building