

# Initial Landscape Proposals

Gateway focal spaces at key entrances into site with seating, interpretive artwork within surfacing (based on the sites history as Holmans Works) and gateway features spanning path

potential for future interpretive artwork within roundabout (based on the sites history as Holmans Works) - outside project scope

Avenue planting along Kerrier Way using large canopy trees. Consideration given to pollution absorbent qualities in species selection (as well as suitability for street tree planting/ habitat value/ etc.)

Western greenspace divided into series of informal terraces (stepping down with topography of site), with seating edge walls used where terraces step down

Sensory planting along top of seating edge retaining walls (at a height where they can be easily touched/ smelt/ experienced/ etc.)

Seating plinth benches (e.g. Demetra by Escofet or similar) - with benches interspersed with (matching) planters (sensory planting). Mix of to bench sizes (to provide a versatile and social area) with armrests and backs included on some (DDA compliant)

Central seating area/ focal space - could be surfaced with granite paving (matching surfacing treatment on adjacent pavements)

Reinforced grass layby for catering vehicles - access to be controlled by folding or removable bollards

3nr robust picnic benches (e.g. Tramet bench by Escofet or similar)

Slatted structure to provide dappled shade with plinth seating underneath (potential to grow climbing plants over structure)

Low growing amenity planting used to provide boundary treatment/ enclosure for both sections of greenspace - with mix of small shrubs/ perennials and grasses that grow to a max height of approx 1.2m (to allow visibility in and out of greenspace). Consideration to be given to pollution absorbent properties in species selection (as well as amenity and habitat value, etc.)

Additional path introduced to accommodate north/ south desire line (and encourage more footfall through the site)

Curved seating plinth benches used as entrance features - potential to include bespoke artwork or signage (with potential for community engagement and/ or interpretation of local history/ culture)

Fruit tree planting within sheltered SW facing corner using traditional Cornish varieties

Interactive artwork/ play features based on the history of Holmans Brothers, potentially to include "automata" sculpture based on the machinery and equipment produced onsite (these would be bespoke commissions, ideally delivered through local artists/ craftspeople)

Wildflower meadow bordering informal amphitheater space for provide amenity and habitat value - could include a mix of natives and wildlife friendly non natives

Informal grassed amphitheater/ focal space, with terraced lawns cut into existing slope and grassed banks between levels (providing informal play value). Main path to be routed through area to provide access as well as natural surveillance

Edible scrub planting used to screen back fences as well as for amenity/ habitat value. Planting mix made up of cultivated varies of native shrubs (e.g. cobnut, kea plum, current, etc.)

Fruit tree planting within sheltered SW facing corner using traditional Cornish varieties

Reinforced grass parking bay for maintenance vehicles - access to be controlled by folding or removable bollards

Low retaining walls where path cuts through grass terraces (to allow gentle gradient along path)

Smaller seating/ focal area sharing similar layout/ design style as seating area in western greenspace

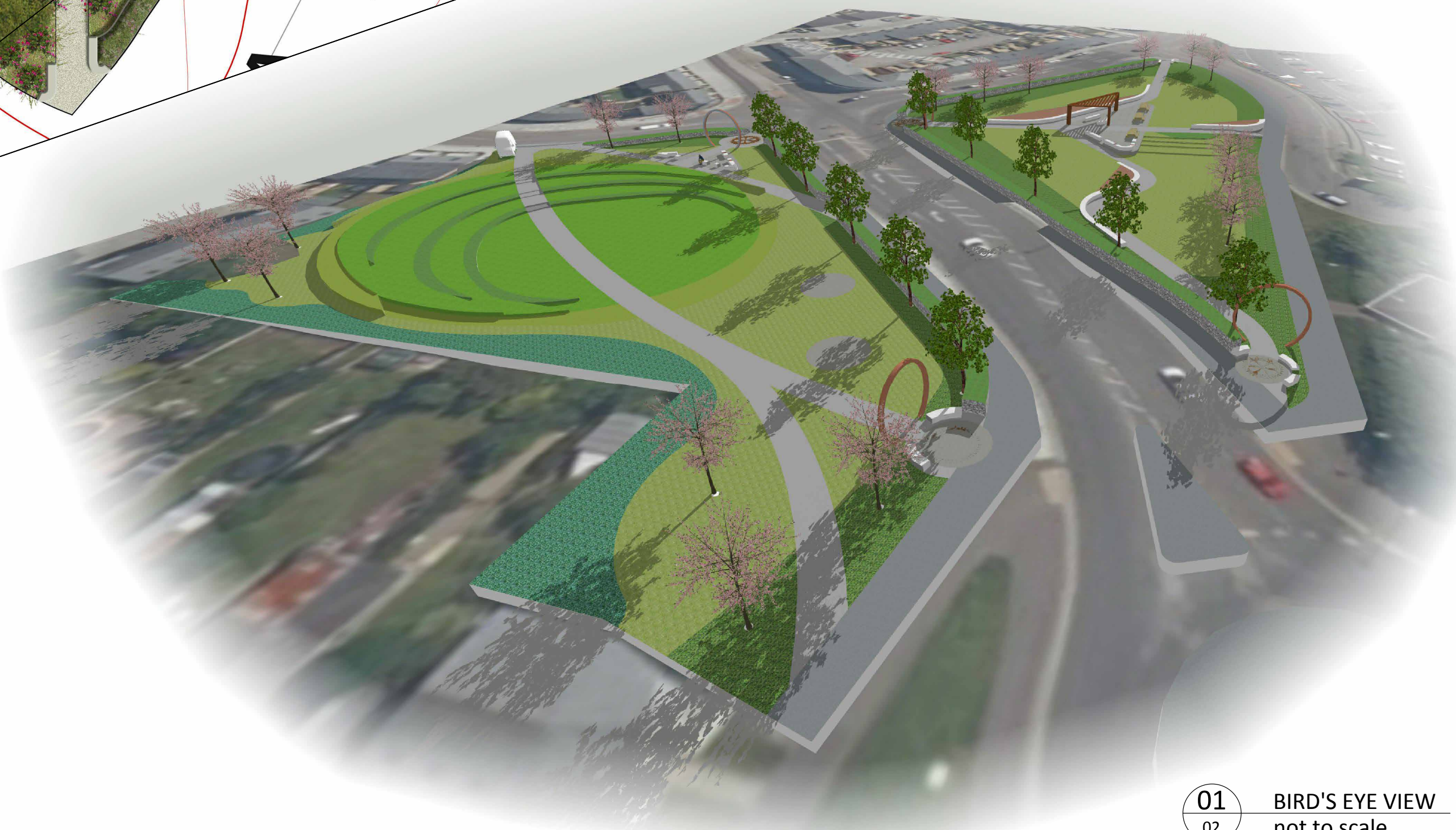
Existing pedestrian crossings - to be coordinated with entranceways into greenspaces

Small to medium size tree species used along Perry Road and within internal areas of greenspace

Low Cornish hedge providing habitat value and enclosure from busier roads - wildflower topped to retain views into and out of the greenspaces

Key:	
	existing contours @ 0.5m
	feature paving (e.g. granite or similar)
	surfaced path (e.g. resin bonded or similar)
	interpretive artwork within surfacing
	plinth seating / seating wall
	picnic table
	grassed area
	reinforced grass (suitable for parking or play surface)
	wildflower meadow
	low growing amenity planting
	sensory planting
	edible scrub planting
	low Cornish hedge (wildflower topped)
	smaller species tree planting
	larger species tree planting
	fruit tree planting

01 PRELIMINARY SITE ARRANGEMENT  
Scale 1: 250



01 BIRD'S EYE VIEW  
02 not to scale



View of Western Greenspace



View along Kerrier Way





# Kerrier Way - Planting

## Avenue Street Tree Planting



Along **Kerrier Way**, to the centre of the site, an avenue of **large street trees** will frame the park. Trees will be selected for their **pollution absorbent** qualities and will provide both **shade** in the summer and **colour** in the autumn.

Along **Perry Road**, **smaller trees** will be selected, but with the ability to also provide **shade** for pedestrians, plus year round interest.



*Prunus avium 'Plena'*  
Double gean



*Platanus x hispanica*  
London Plane Tree

## Sensory Planting



Areas of **sensory planting** are proposed through the site, **along the pathways** in the western greenspace. Planting will be placed along the top of the retaining walls traversing the slope of the site and seating will be integrated into these to allow visitors to interact with the plants.

The planting mix would consist of **mostly perennials and grasses**, chosen for their sensory qualities, with some **small shrubs** for year round structure.

This style of planting has **strong sensory qualities** providing additional interest in terms of touch, smell and sound, as well as movement and seasonal change.



*Lavandula angustifolia*  
English Lavender



*Stipa tenuissima*  
Mexican feather grass



*Stachys byzantina*  
Lambs ears

## Pollution Absorbing Planting and Cornish Hedgerows



To the **margins** of both sides of the site, **low level shrubs, perennials and grasses** will be chosen to enclose the spaces, provide **increased habitat** for wildlife and be **densely planted** to absorb pollution.

Consideration will be given to species selection for their **pollution absorbent** qualities, such as the hairy leaved *Cotoneaster franchetii*, ridge leaved *Viburnum tinus* and waxy leaved *Ilex aquifolium*, all of which have been proven to have the optimum qualities to **trap pollutants**, thus ensuring **cleaner air for visitors**.

**Wildflower topped Cornish hedges** are proposed to provide **enclosure** from the busier roads as well as habitat value. These would be low enough to retain views into and out of the greenspaces



Low turf topped Cornish hedge



*Cotoneaster franchetii*  
Franchet's cotoneaster



*Viburnum tinus*  
Laurustinus



*Ilex aquifolium*  
Common holly

## Orchard Planting and Edibles



Within the eastern greenspace, an area for **fruit tree** planting will be created. Species section will focus on **traditional Cornish varieties**, such as 'Cornish Mother' apples and Kea plums.

**Wildflower meadow** will sit adjacent to the orchard to provide food for **pollinators** and support to the orchard ecosystem and along the boundary, **edible hedging plants**, such as brambles and cob nuts will provide wildlife habitats and encourage visitors to value the food nature has to provide.



*Malus domestica 'Cornish Mother'*  
Cornish Mother Apple



*Prunus sylvestris 'Kea'*  
Kea Plum



*Rubus fruticosus*  
Bramble



# Kerrier Way - Features and Facilities

## Landscape Furniture and Amenities



Curved concrete benches to form the entrance of the site



Integrated planters and benches

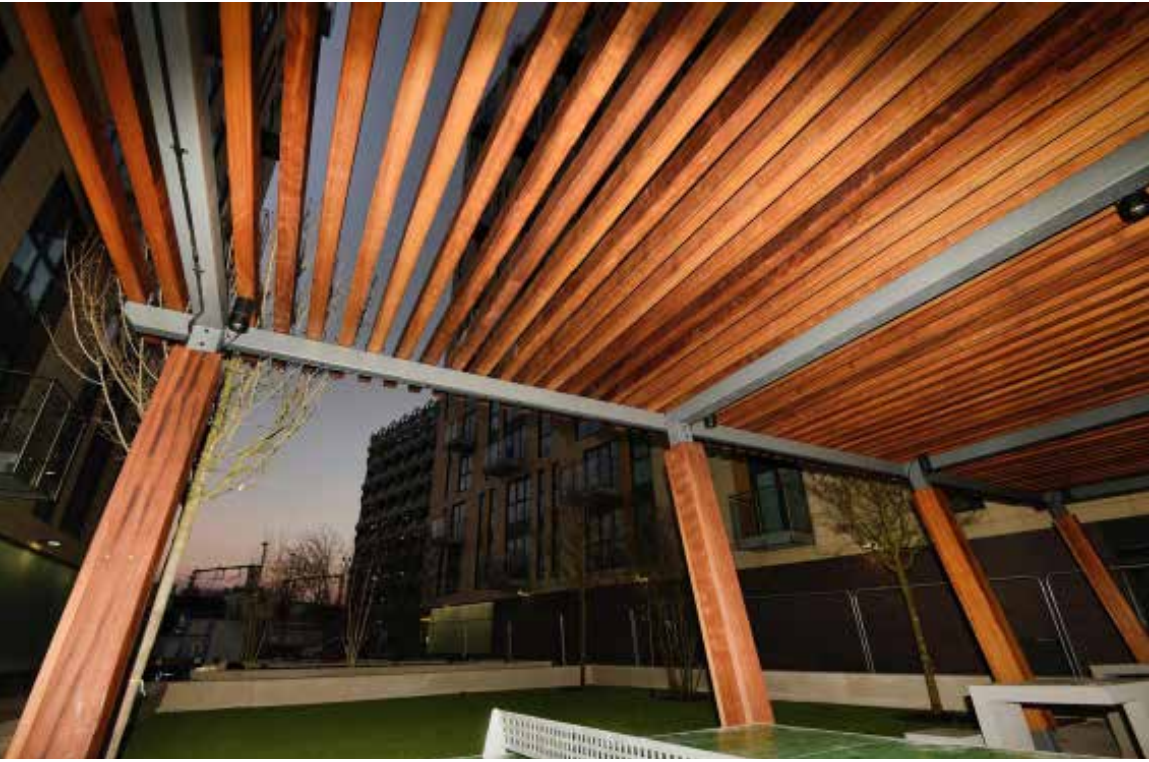


Benches integrated into the topography of the site



Sturdy picnic benches allow for social gathering

## Central Social Areas



In the western greenspace, a dedicated **social area** will be created to provide a **focal point** to the space.

Surfaced in **granite** with a mixture of **benches** to provide comfort and **accessibility** for all, the space will also be partially covered by a **wooden slatted canopy** to provide dappled shade and the potential for climbing plants.

This space will be echoed in the eastern greenspace on a smaller scale.

## Informal Amphitheater Space



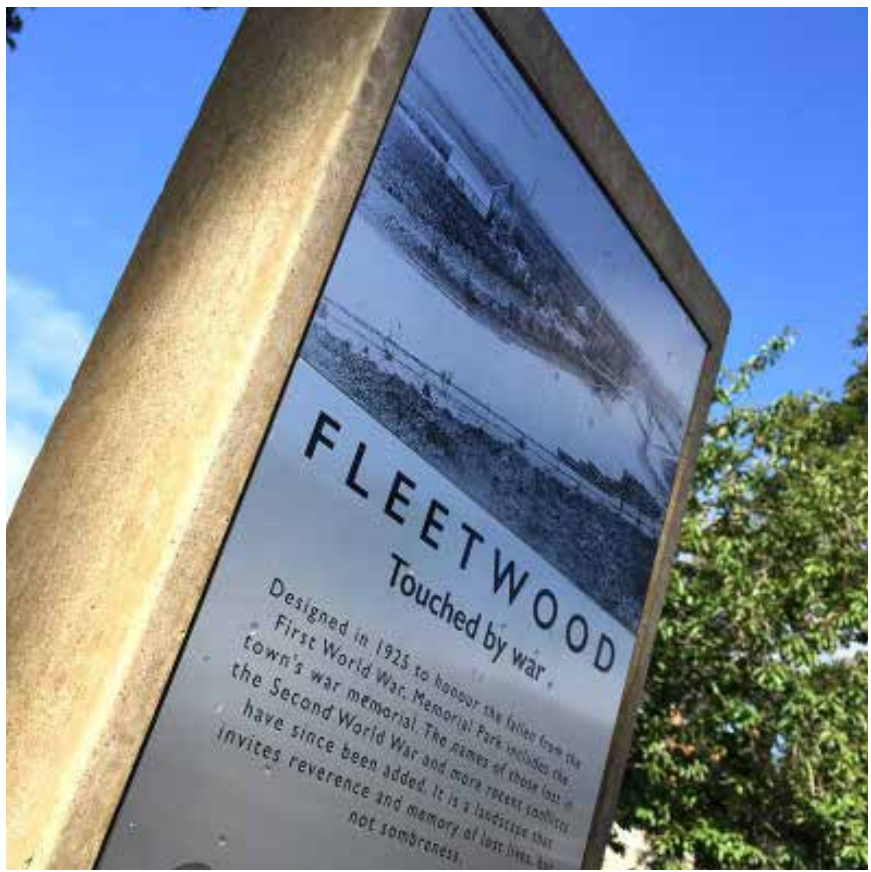
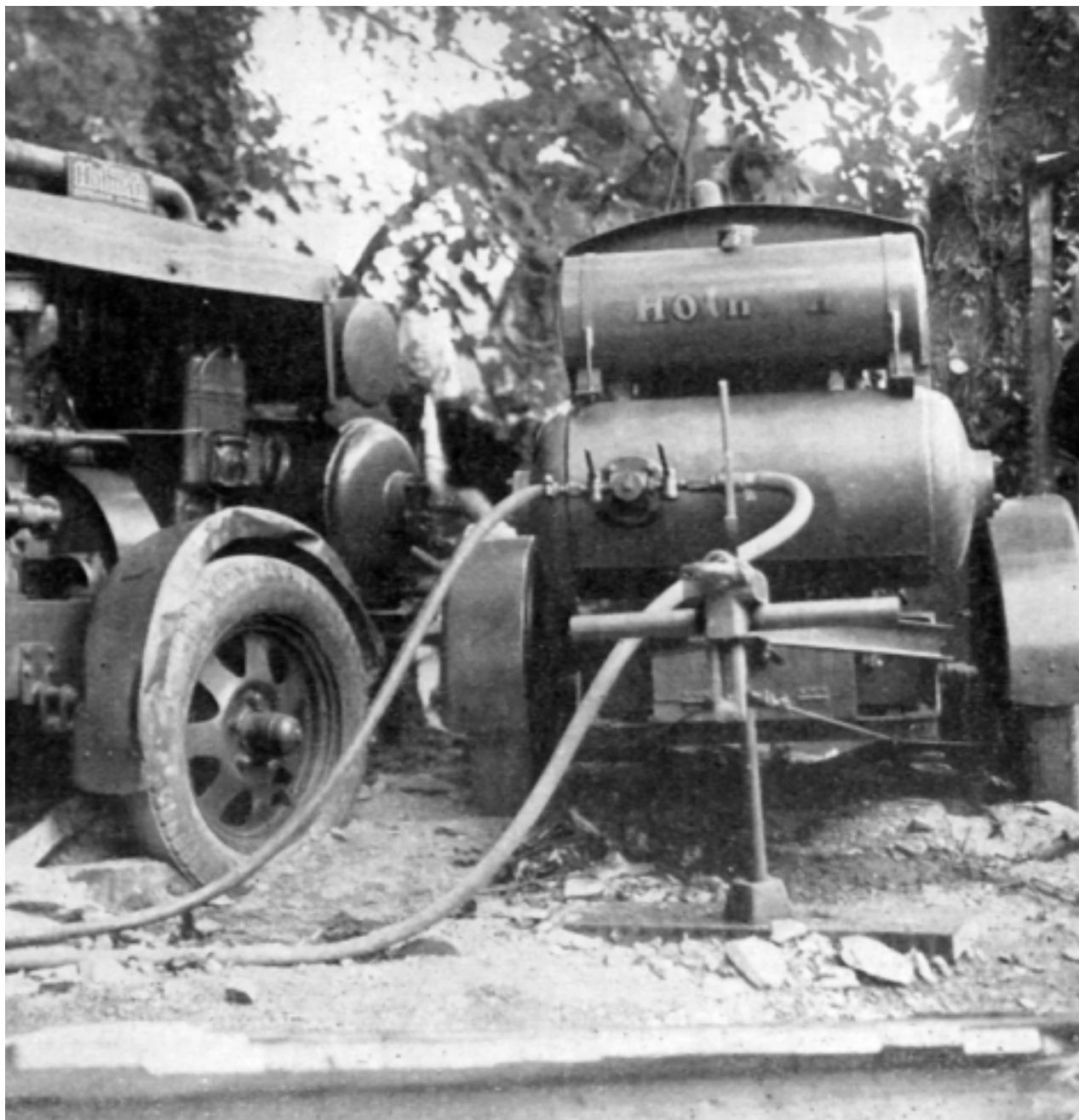
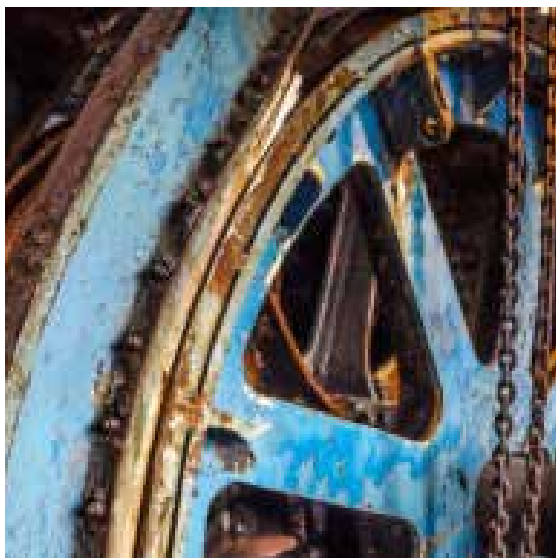
A low informal grassed **amphitheatre** will sit into the existing slope of the eastern greenspace with **terraced lawns** for recreation and socialising. The space will provide opportunity for gatherings, play or relaxation.



# Kerrier Way - Artwork, Interpretation and Play

## History of the Site and Interpretation

As the area is situated on the former **Holman factory site**, commemorating its industrial heritage is important. Through **signage and interpretation boards**, the strong links to the **mining history** of the town and the significant role played by Holmans in **developing machinery** for mining not just in Cornwall, but across the world, such as the Compressed Air Rock Drill, will be celebrated. There may be **opportunities for re-use of engineering artifacts** (produced at the Holmans Works) within the site features and artwork.



Interpretation boards will celebrate the history of the site

## Artwork

Artworks commissioned for this site will have the potential to **engage visitors** and celebrate the heritage of the area through **mechanical and moving elements** and **industrial materials**, such as corten steel.



Engaging automata to reflect the **industrial heritage** could be commissioned from **local artists**



Artworks **embedded into pathways** or used to form **gateway features** at entrances to reflect the history of the area



Industrial inspired sculptures can be **focal points** and provide play interest



Movable **metal sculptures** which respond to the environment



Laser cut **corten steel** panels can be used as fencing or inset into concrete

## Play

Although the site is not a dedicated play space, there is still the opportunity for **free play** and space to allow children to let of steam among the **grassy mounds** of the amphitheatre, among the **sensory planting** or testing their **balance** along the concrete benches. The **interpretive artwork features** would also be designed with play value in mind.

