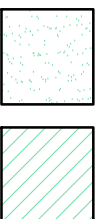


© D3-ASSOCIATES  
 THIS DRAWING IS THE SUBJECT OF COPYRIGHT WHICH VESTS IN D3-ASSOCIATES. IT IS AN INFRINGEMENT OF COPYRIGHT TO REPRODUCE THIS DRAWING, BY WHATEVER MEANS, INCLUDING ELECTRONIC, WITHOUT THE EXPRESS WRITTEN CONSENT OF D3-ASSOCIATES WHICH RESERVES ALL ITS RIGHTS.

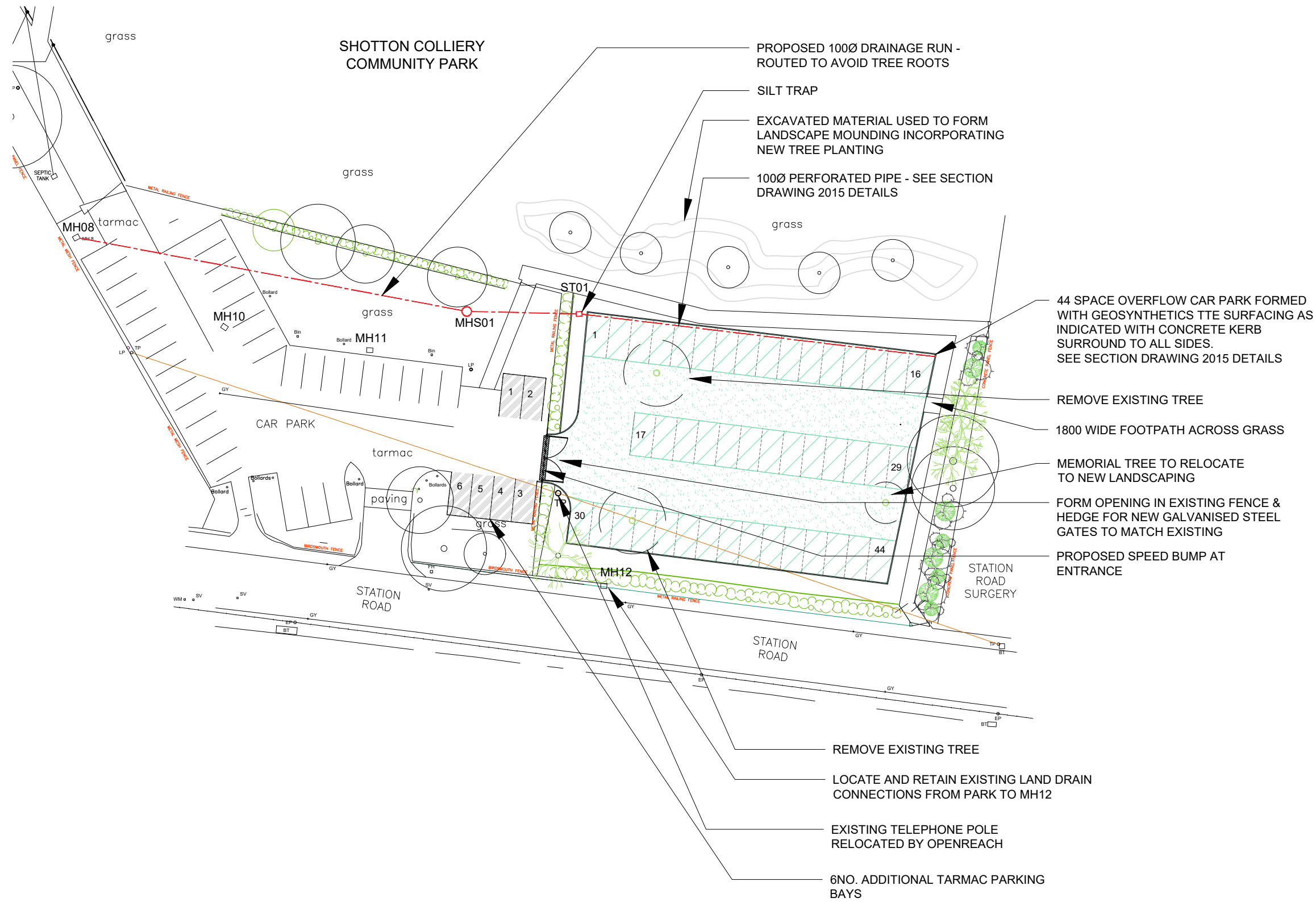
D3-ASSOCIATES ASSERTS ITS RIGHTS TO BE IDENTIFIED AS THE AUTHOR OF THIS DESIGN. ALL DRAWINGS, IMAGES AND MODELS ARE SUBJECT TO THE COPYRIGHT, DESIGNS & PATENTS ACT 1988.

- DRAWING NOT TO BE SCALED
- REPORT ERRORS & OMISSIONS TO D3-ASSOCIATES
- CHECK ALL DIMENSIONS ON SITE
- TO BE READ IN CONJUNCTION WITH HEALTH AND SAFETY PLAN AND ALL RELEVANT RISK ASSESSMENTS



GEOSYNTHETICS TTE GRAVEL SURFACE TO BAY ACCESS

GEOSYNTHETICS TTE GRASS SURFACE TO PARKING BAYS



44 SPACE OVERFLOW CAR PARK FORMED WITH GEOSYNTHETICS TTE SURFACING AS INDICATED WITH CONCRETE KERB SURROUND TO ALL SIDES. SEE SECTION DRAWING 2015 DETAILS

REMOVE EXISTING TREE

1800 WIDE FOOTPATH ACROSS GRASS

MEMORIAL TREE TO RELOCATE TO NEW LANDSCAPING

FORM OPENING IN EXISTING FENCE & HEDGE FOR NEW GALVANISED STEEL GATES TO MATCH EXISTING

PROPOSED SPEED BUMP AT ENTRANCE

STATION ROAD SURGERY

REMOVE EXISTING TREE

LOCATE AND RETAIN EXISTING LAND DRAIN CONNECTIONS FROM PARK TO MH12

EXISTING TELEPHONE POLE RELOCATED BY OPENREACH

6NO. ADDITIONAL TARMAC PARKING BAYS

Rev	Description	Iss	Chkd	Date
P06	REVISED TENDER ISSUE	SB	ST	27/10/2023
P05	Telegraph pole relocated - parking updated to suit	SB	ST	26/10/2023
P04	Car parking realigned to retain telegraph pole	JA	MD	10/10/2023

Purpose of issue

**TENDER**

Project Information

**SHOTTON OVERFLOW CAR PARK**

Drawing Information

**PROPOSED SITE OVERFLOW CARPARK**

Drawing No.

**1873-SHO-D3A-00-00-DR-A-2014**

Project No.	Drawn	Scale @ A3	Status	Revision
1873	JA	1 : 500	D2	P06



info@d3-associates.co.uk  
 www.d3-associates.co.uk