

SPECIFICATION FOR IMPROVEMENTS TO PAVING IN FRONT OF THE LEICHLINGEN PAVILION, MILL MEADOWS, MEADOW ROAD, HENLEY-ON-THAMES, RG9 1BE

You are invited to quote for improvement works to the paved area in front of the Leichlingen Pavilion at Mill Meadows and the ramp for the disabled, shown on the attached map and photos. The area is approximately 540m² (shown by the hatched area in map 1) and is made of different surfaces including grasscrete, grassed area, paving slabs and block paving (illustrated in images 4 -7).

The work will consist of:

1. Removing the existing various surfaces adjacent to the Pavilion as shown on map 1.
2. Preparing the groundwork, ensuring adequate drainage/permeability, and supplying and installing new block paving.
3. Block paving in different neutral shades to delineate the pedestrian and vehicle access shown in image 2 – parking area outlined in blue in image 3. Please detail intended materials.
4. Improving the existing slab steps and risers as shown in image 8.

The specification is as follows:

1. Proposed Paving in front of the Leichlingen Pavilion

- Take up the existing surfacing (slabs, grasscrete etc.) including the surfacing on the ramp (approximately 280 sqm) and dispose of off site
- Remove grassed area by hedge
- Excavate base by a further 150mm under the slabs and dispose of off site
- Supply and lay a geotextile membrane to the base of the dig ensuring adequate drainage is installed to allow run off and prevent pooling of water (please detail)
- Supply, lay, level and compact Type 1 stone 150mm thick
- Supply and concrete in edging bricks
- Supply and install Tegula paving (similar to the example shown in image 9)
- Supply and install column protector for lamp post shown in images 6 and 7

2. Existing Block Paved Area that leads to the car park

- Take up the existing area of sunken block paving and supply and install Tegula paving (approximately 6m x 2m) ensuring adequate drainage is installed to allow run off and prevent pooling of water (please detail)
- Supply and install a line of ACO slotted channel drain with 'Heal Guard' covers, across the front of the block pavers
- Pipe the ACO drain to the existing surface water gully/manhole

3. Existing Slab Steps

- Pressure wash the existing steps
- Replace the upright supporting bricks under the slabs as required (approximately 30) to match the existing
- Repaint the white line at the front edge of the step

4. Timing of the Work

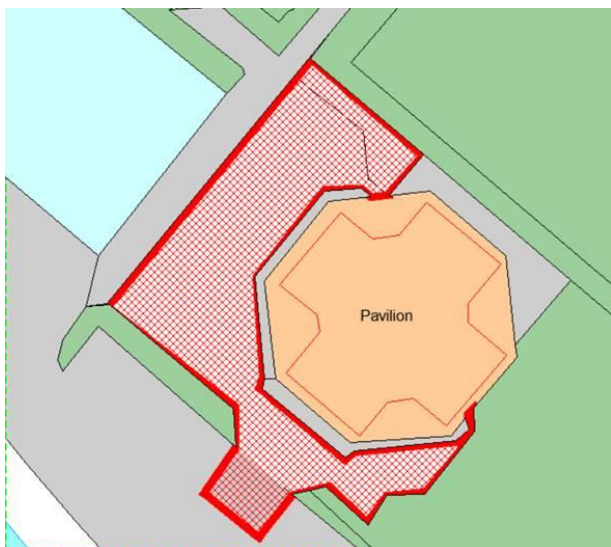
- It is likely the work will be timed to coincide with the Bowls Club close season between October and March.

Closing Dates for Quotes: Monday 17 August 2020

For further information please email:-

Karl Bishop, Parks Manager on k.bishop@henleytowncouncil.gov.uk or

Becky Walker, Estates Manager on b.walker@henleytowncouncil.gov.uk



Map 1 (approx. measurements)



Image 1



Image 2 (approx. measurements)

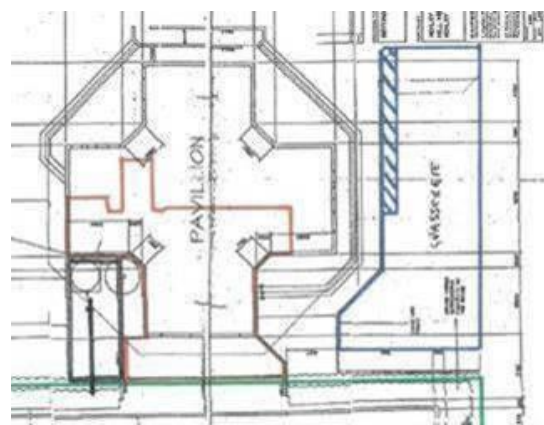


Image 3



Image 4



Image 5



Image 6



Image 7



Image 8



Image 9