

Architects

**Landolt  
+ Brown**

Landolt & Brown  
501 Cocoa Studios  
The Biscuit Factory  
Drummond Road  
London SE16 4DG

+44 (0)207 357 9547  
www.landoltandbrown.com

P0	12.06.23	Issue for tender	MA	AB	AB
Rev	Date	Reason For Issue	Dr	Chk	App

Project

**Horniman Museum - The CUE**

Title

**Existing location plan**

Project Number

**687**

Date

**05/06/23**

Checked By

**AB**

Revision

**P0**

Scale @ ISO A3

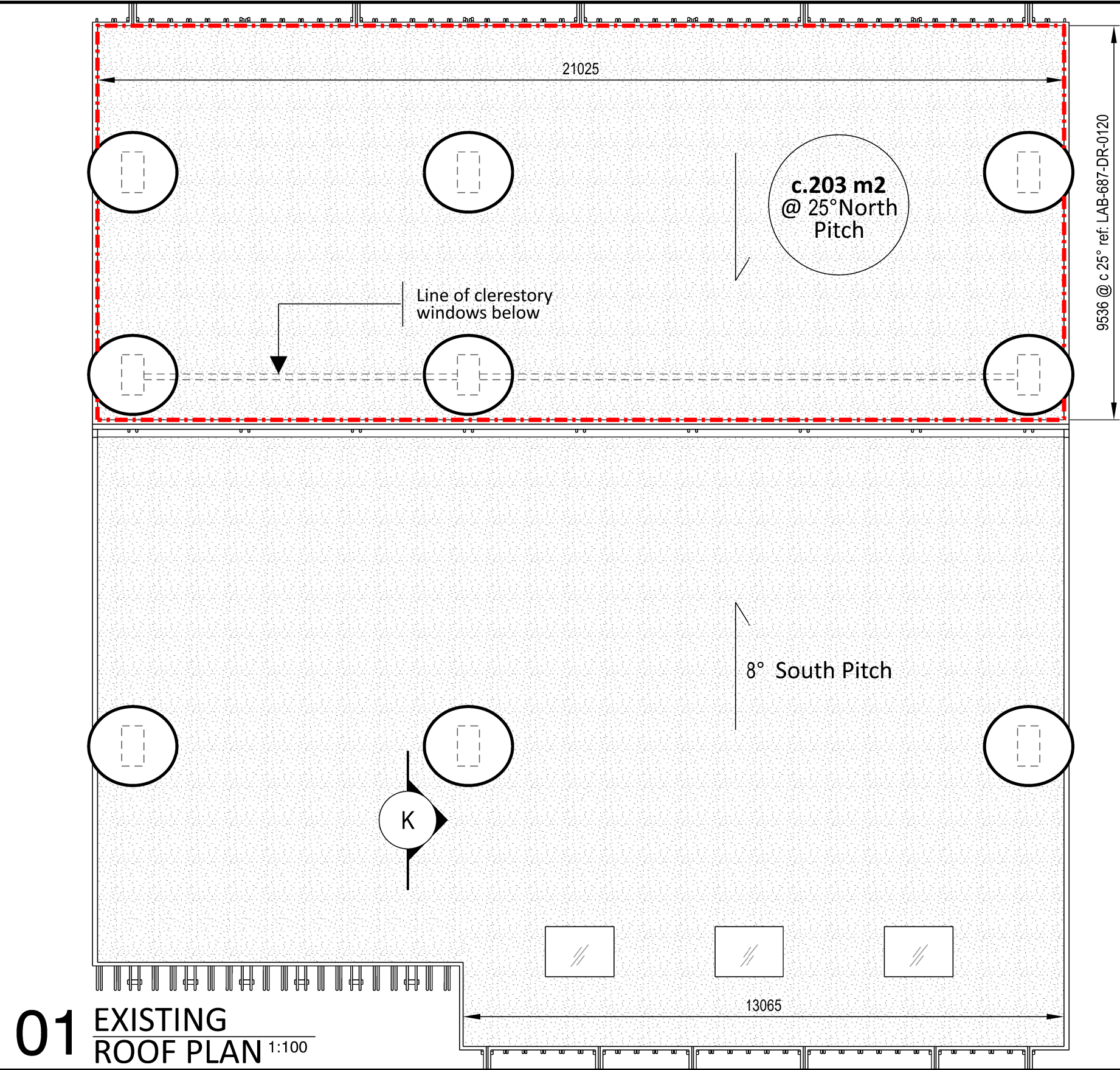
**1:3000**

Approved By

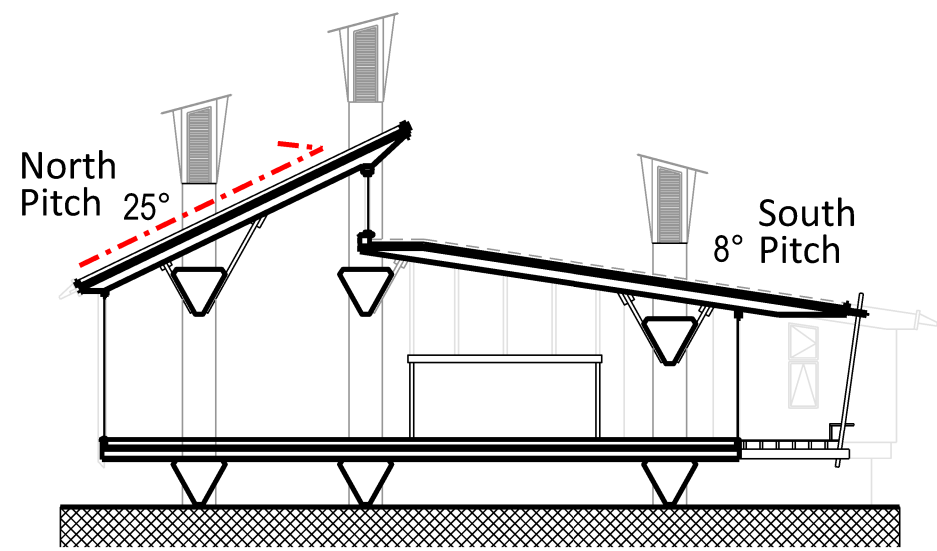
**AB**

Drawing Number

**LAB-687-DR-0101**

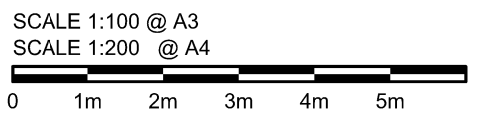
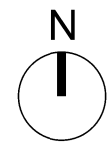


**01** EXISTING ROOF PLAN 1:100



**02** EXISTING SECTION K 1:200

- General Notes
- All dimensions are to be re-measured on site
  - All dimensions are shown in millimetres unless otherwise noted
  - Do not scale



Architects

**Landolt + Brown**

Landolt & Brown  
501 Cocoa Studios  
The Biscuit Factory  
Drummond Road  
London SE16 4DG  
+44 (0)207 357 9547  
www.landoltandbrown.com

P1	25.04.23	Issue for tender	MA	AB	AB
P0	18.04.23	Issue for coordination	MA	AB	AB
Rev	Date	Reason For Issue	Dr	Chk	App

Project

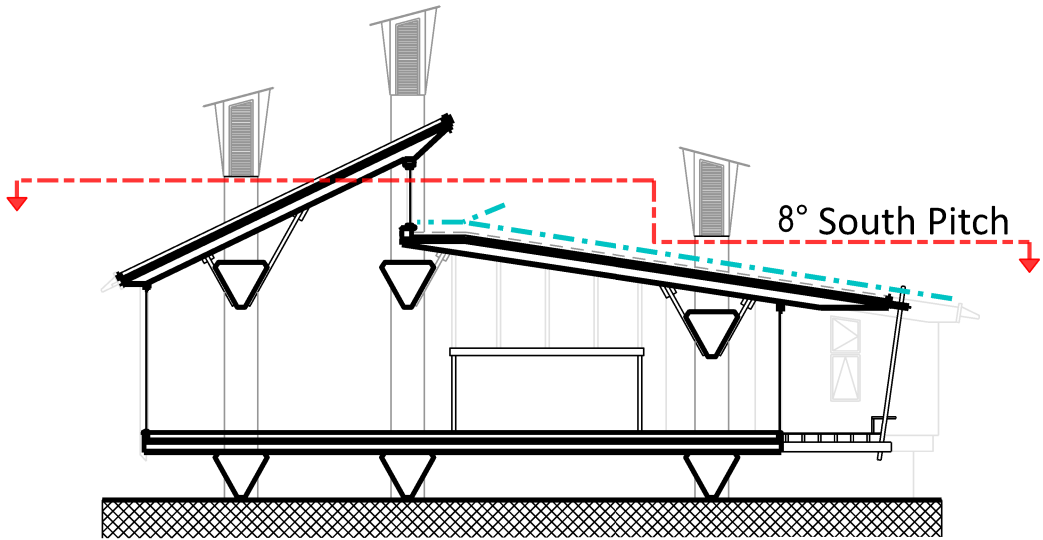
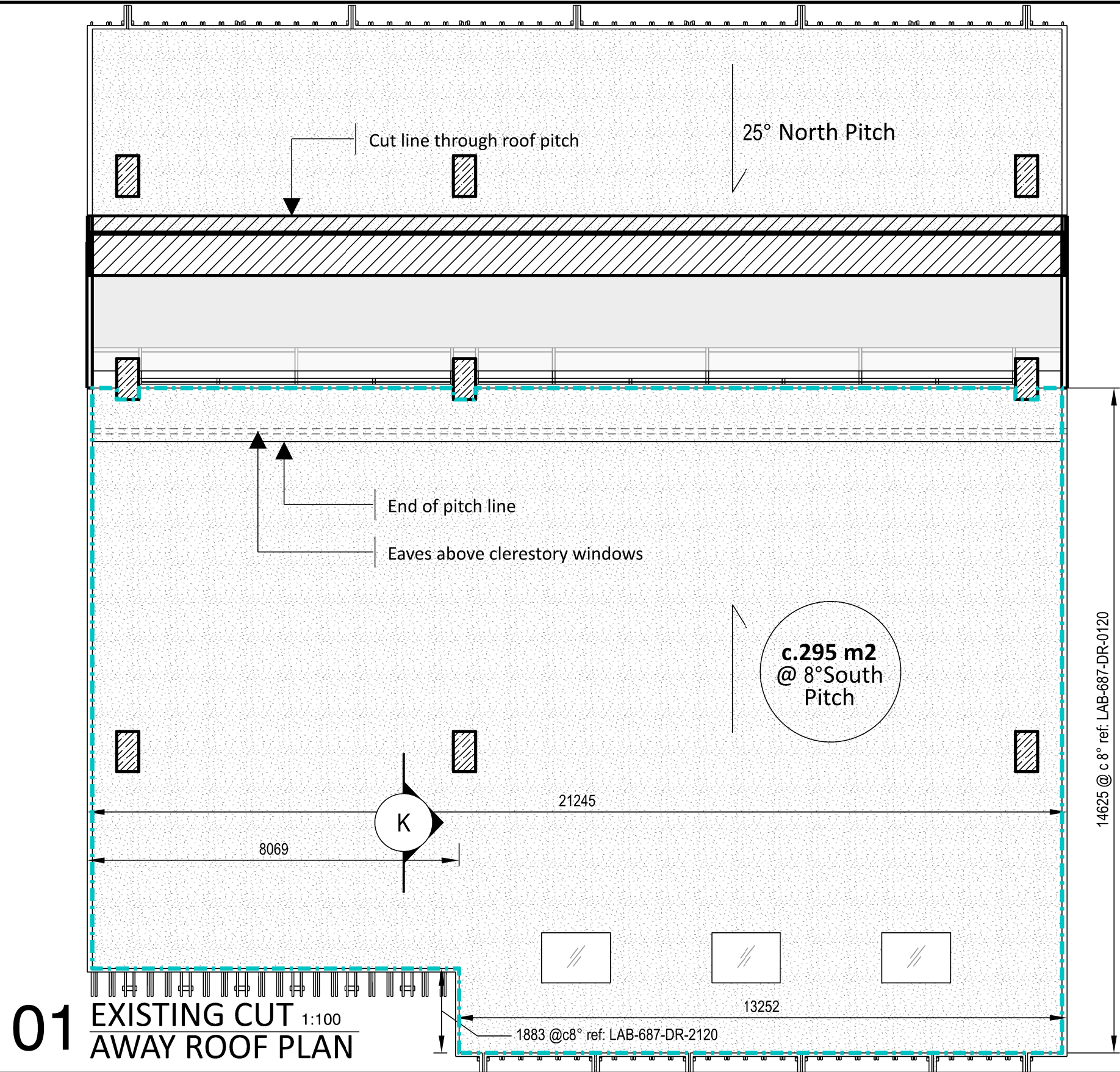
**Horniman Museum - The CUE**

Title

**Existing roof plan**

Project Number	687	Date	08/04/23	Checked By	AB
Revision	P1	Scale @ ISO A3	1:100	Approved By	AB
Drawing Number	LAB-687-DR-0111				

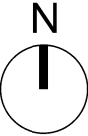




02 EXISTING SECTION K  
1:200

Full extent of southern roof

- General Notes
- All dimensions are to be re-measured on site
  - All dimensions are shown in millimetres unless otherwise noted
  - Do not scale



SCALE 1:100 @ A3  
SCALE 1:200 @ A4

01 EXISTING CUT AWAY ROOF PLAN  
1:100

Architects

Landolt  
+ Brown

Landolt & Brown  
501 Cocoa Studios  
The Biscuit Factory  
Drummond Road  
London SE16 4DG  
+44 (0)207 357 9547  
www.landoltandbrown.com

Rev	Date	Reason For Issue	Dr	Chk	App
P1	25.04.23	Issue for tender	MA	AB	AB
P0	18.04.23	Issue for coordination	MA	AB	AB

Project

Horniman Museum - The CUE

Title

Existing southern roof plan

Project Number

687

Date

14/04/23

Checked By

AB

Revision

P1

Scale @ ISO A3

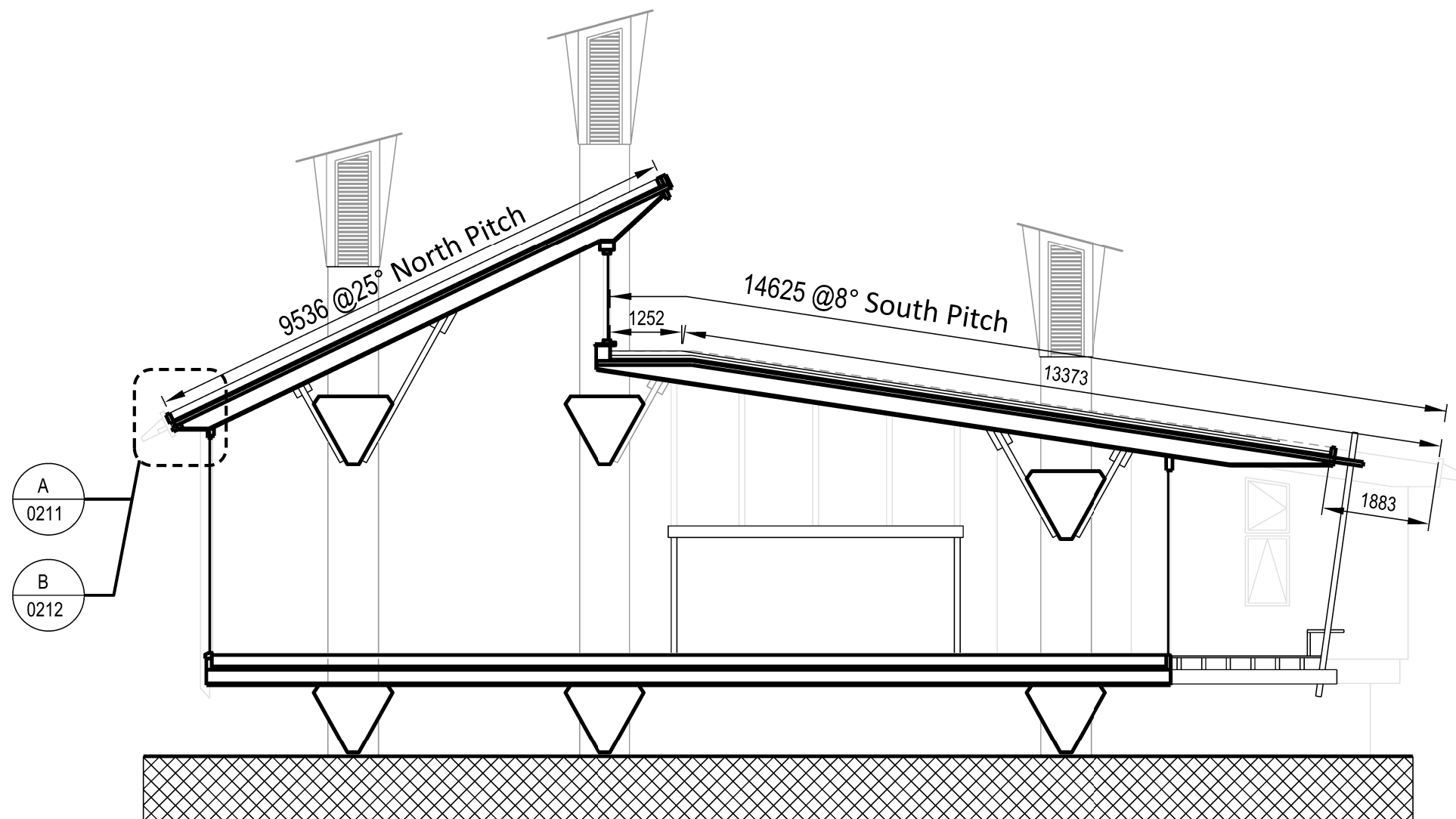
1:100

Approved By

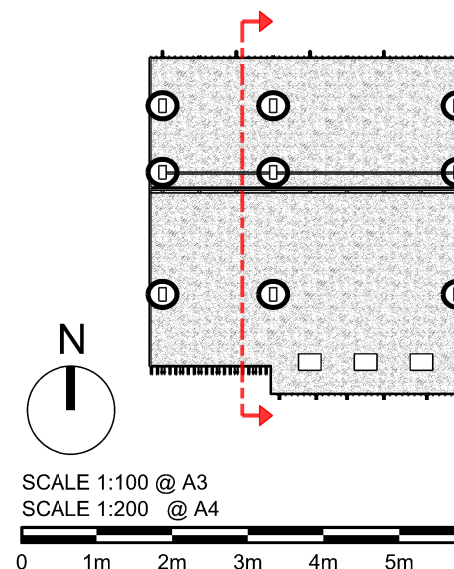
AB

Drawing Number

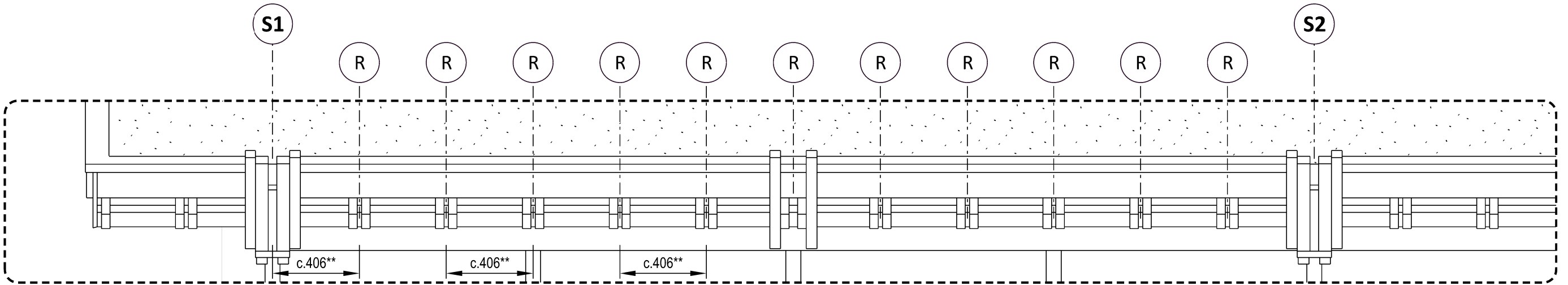
LAB-687-DR-0112



- General Notes
- All dimensions are to be re-measured on site
  - All dimensions are shown in millimetres unless otherwise noted
  - Do not scale



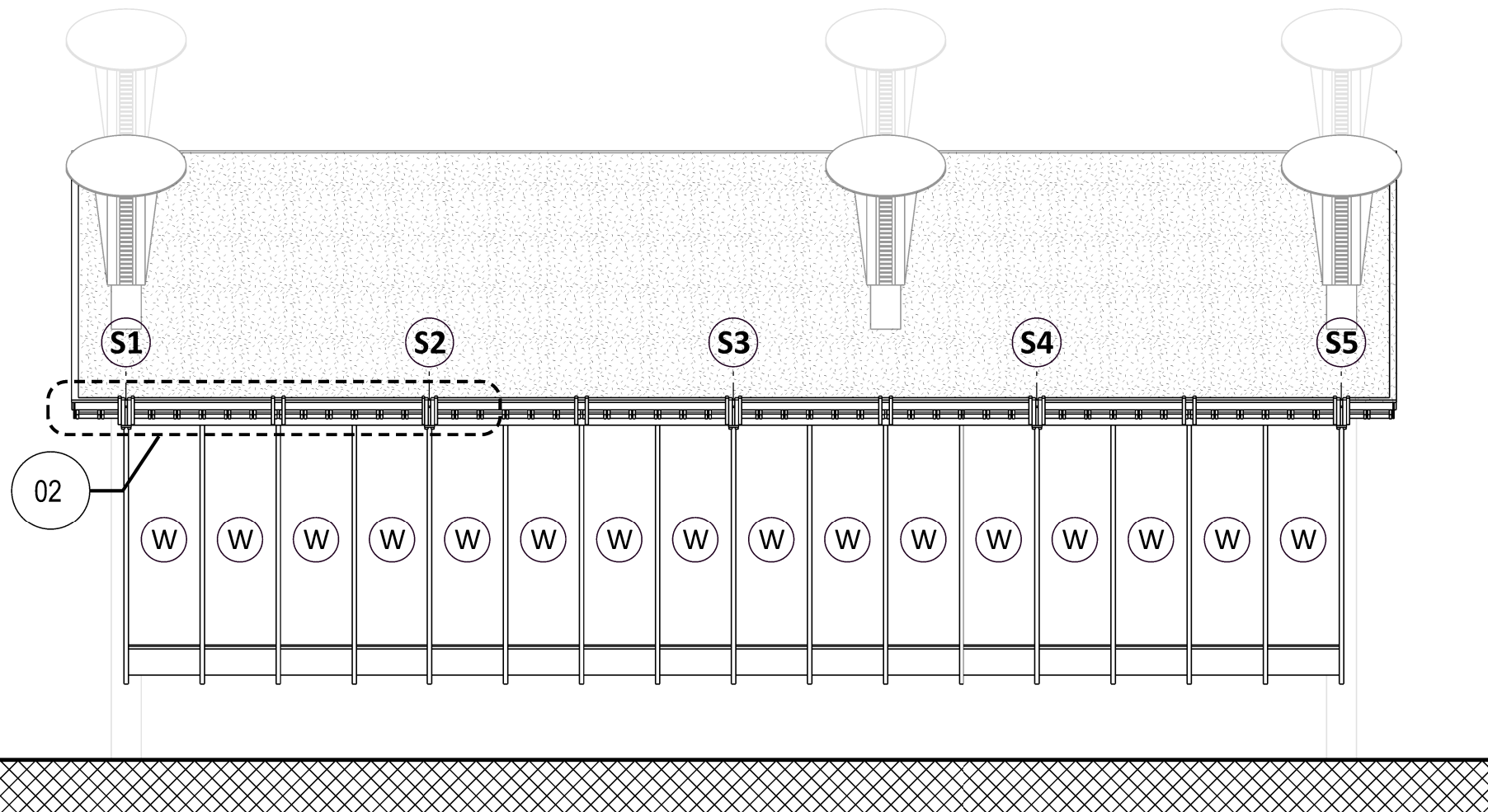
<div>Architects</div> <div><div>Landolt + Brown</div><div>Landolt &amp; Brown 501 Cocoa Studios The Biscuit Factory Drummond Road London SE16 4DG  +44 (0)207 357 9547 www.landoltandbrown.com</div></div>							Project	Horniman Museum - The CUE			Project Number	687	Date	19/04/23	Checked By	AB	
								Title Existing section K			Revision	P0	Scale @ ISO A3	1:100	Approved By	AB	
	P0	25.04.23	Issue for coordination			MA	AB	AB									
	Rev	Date	Reason For Issue			Dr	Chk	App									
											Drawing Number			LAB-687-DR-0120			



## 02 EXISTING NORTH PITCH EAVES ELEVATION 1:20

General Notes

- \*\* Dimensions are dependant on existing rafter centers; to be measured on site.
- All dimensions are to be re-measured on site
- All dimensions are shown in millimetres unless otherwise noted
- Do not scale



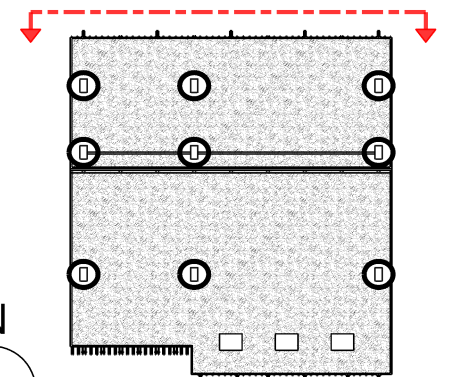
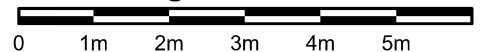
## 01 EXISTING NORTH ELEVATION 1:100

### KEY

- S: Projecting rain water spout
- R: Projecting rafter
- W: Window



SCALE 1:100 @ A3  
SCALE 1:200 @ A4



Architects

Landolt  
+ Brown

Landolt & Brown  
501 Cocoa Studios  
The Biscuit Factory  
Drummond Road  
London SE16 4DG

+44 (0)207 357 9547  
www.landoltandbrown.com

Rev	Date	Reason For Issue	Dr	Chk	App
P1	25.04.23	Issue for tender	MA	AB	AB
P0	18.04.23	Issue for coordination	MA	AB	AB

Project

Horniman Museum - The CUE

Title

Existing north elevation

Project Number

687

Date

11/04/23

Checked By

AB

Revision

P1

Scale @ ISO A3

1:100

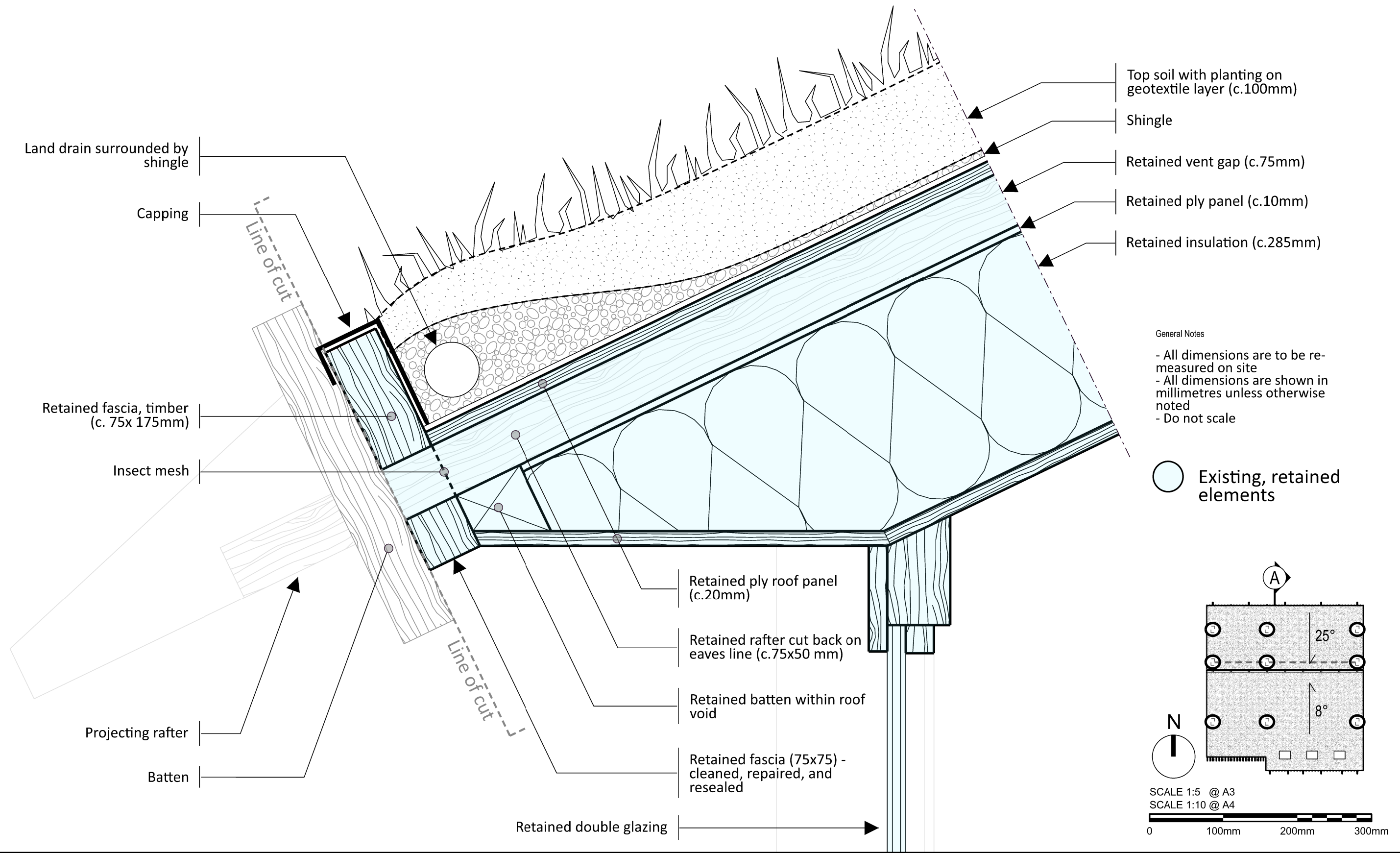
Approved By

AB

Drawing Number

LAB-687-DR-0130

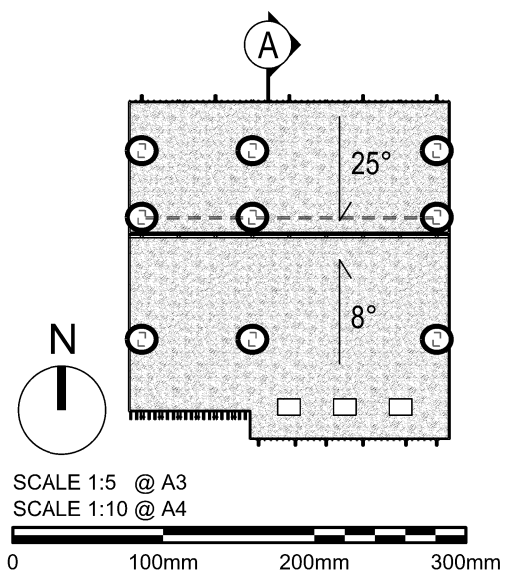




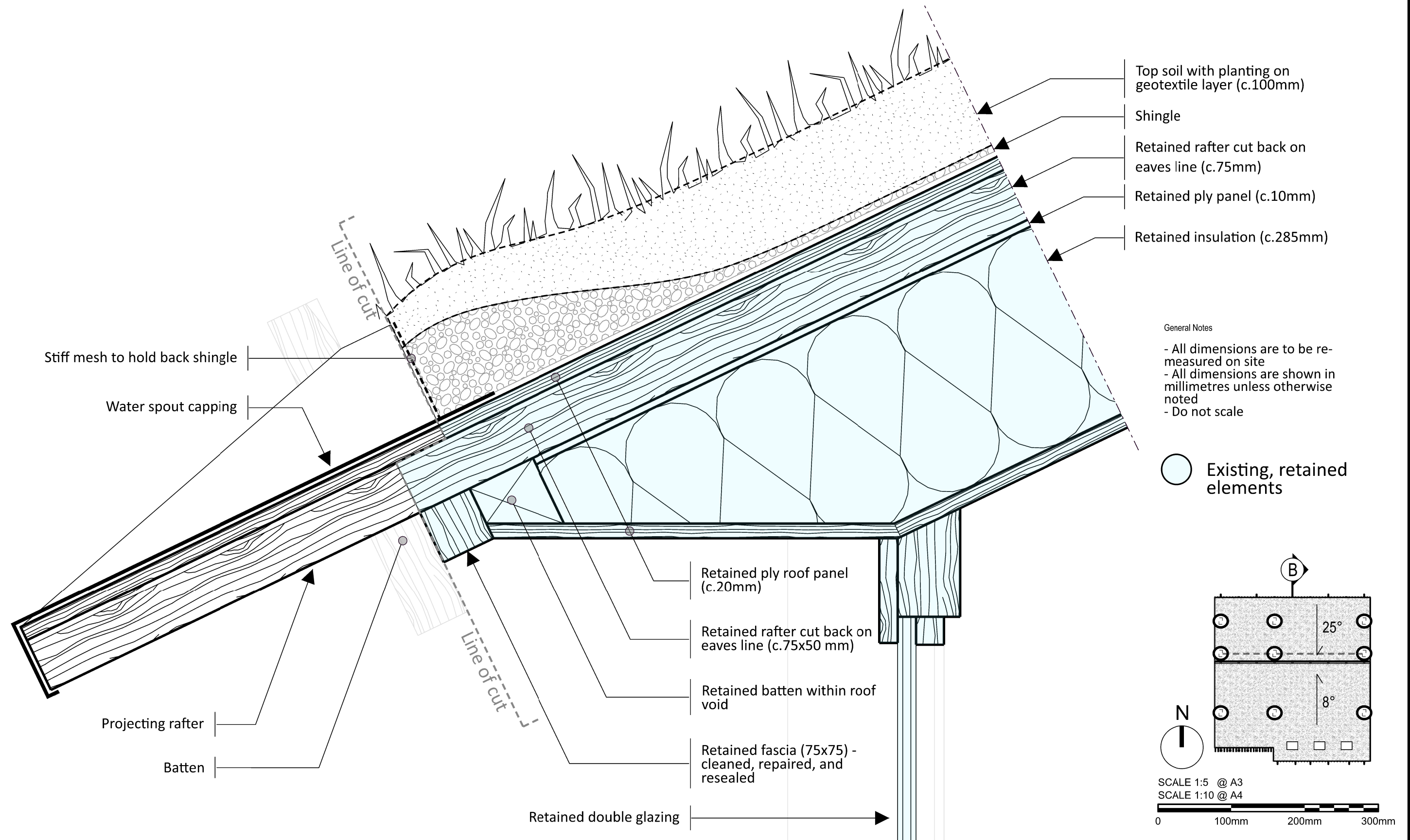
General Notes

- All dimensions are to be re-measured on site
- All dimensions are shown in millimetres unless otherwise noted
- Do not scale

Existing, retained elements



Architects		<div>Landolt + Brown</div> <div>Landolt &amp; Brown 501 Cocoa Studios The Biscuit Factory Drummond Road London SE16 4DG +44 (0)207 357 9547 www.landoltandbrown.com</div>					Project			Project Number		Date		Checked By	
							Horniman Museum - The CUE			687		17/04/23		AB	
										Revision		Scale @ ISO A3		Approved By	
										P1		1:5		AB	
										Title		Existing roof detail section A Eaves -North pitch 25°			
P1		25.04.23		Issue for tender		MA	AB	AB							
P0		18.04.23		Issue for coordination		MA	AB	AB							
Rev		Date		Reason For Issue		Dr	Chk	App							



<div>Architects</div> <div><div>Landolt + Brown</div><div>Landolt &amp; Brown 501 Cocoa Studios The Biscuit Factory Drummond Road London SE16 4DG  +44 (0)207 357 9547 www.landoltandbrown.com</div></div>							Project	Horniman Museum - The CUE			Project Number	687	Date	08/04/23	Checked By	AB
											Revision	P1	Scale @ ISO A3	1:5	Approved By	AB
							Title	Existing roof detail section B - Spout -North pitch 25°			Drawing Number LAB-687-DR-0212					
	P1	25.04.23	Issue for tender			MA	AB	AB								
	P0	18.04.23	Issue for coordination			MA	AB	AB								
	Rev	Date	Reason For Issue			Dr	Chk	App								

- All dimensions are to be re-measured on site
- All dimensions are shown in millimetres unless otherwise noted
- Do not scale

- Top soil with planting on geotextile layer (c.100mm)
- Shingle
- Retained ply panel (c.20mm)
- Retained vent gap (c.75mm)
- Retained ply panel (c.10mm)
- Retained insulation (c.285mm)
- Retained ply panel (c.20mm)

Lightning tape -  
not in place

Capping - not in place  
and torn

Timber block - 75x175mm

Timber edge board -  
c. 30mm thick

— Insect mesh

- Projecting batten

Retained fascia -  
cleaned and repaired  
(c.150x75mm)

Technical drawing of a building facade. The drawing shows a vertical wall with a sloped roofline. A circular feature, labeled 'E', is positioned on the right side of the wall. A dashed line indicates a section cut through the wall and roof. Below the roofline, a trapezoidal shape is shown, likely representing a foundation or a base. The drawing is a line drawing with no shading.

Ref: LAB 687 DR 0120

Existing, retained elements

SCALE 1:5 @ A3  
SCALE 1:10 @ A4



Landolt  
+Brown

+44 (0)207 357 9547  
www.landoltandbrown.com

P0	12.06.23	Issue for tender	MA	AB	AB
Rev	Date	Reason For Issue	Dr	Chk	App

# Horniman Museum - The CUE

687

12/06/23

AB

Existing roof detail section E  
North pitch 25° - Top edge

— P0

1:5

AB

LAB-687-DR-0215