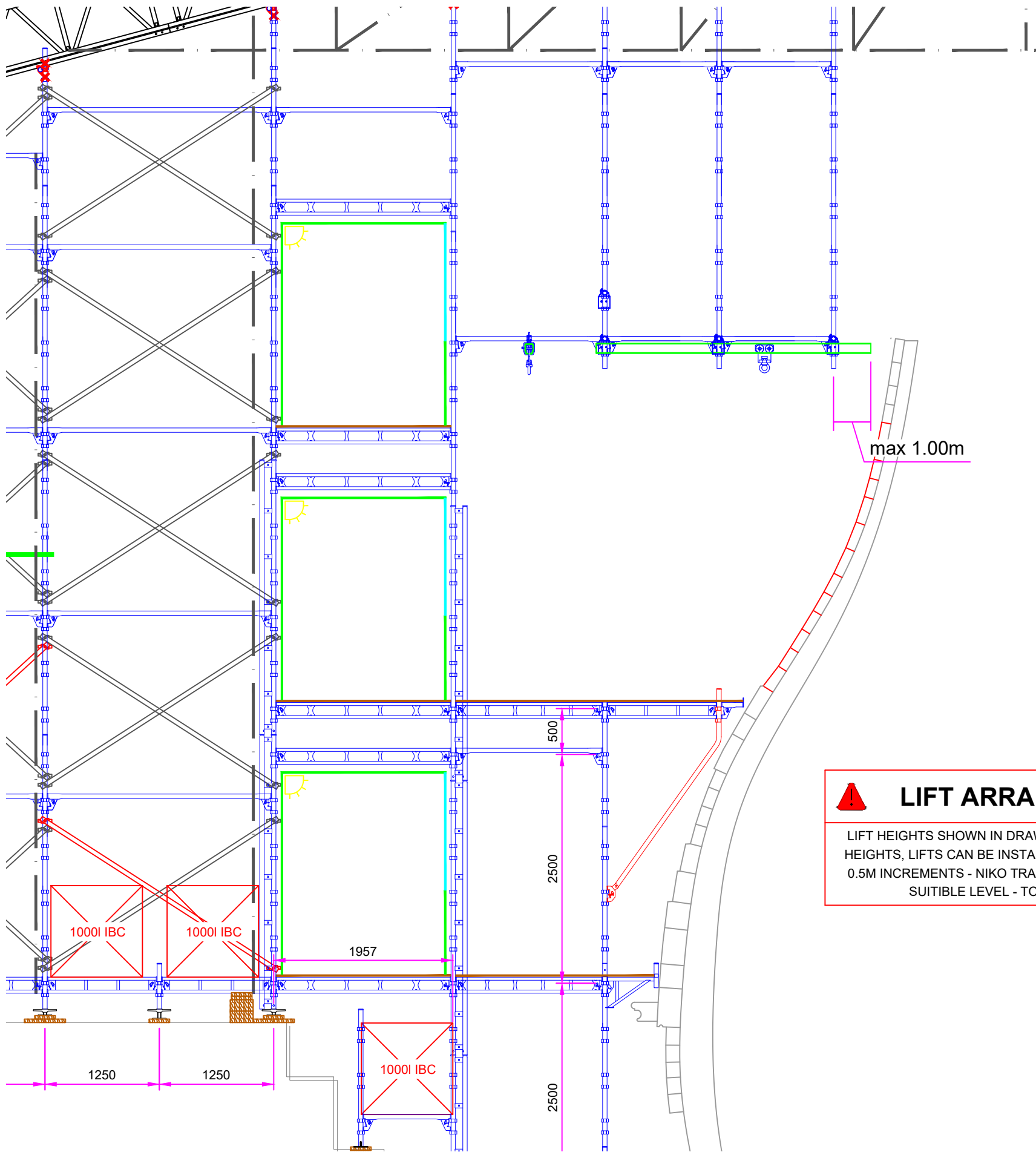
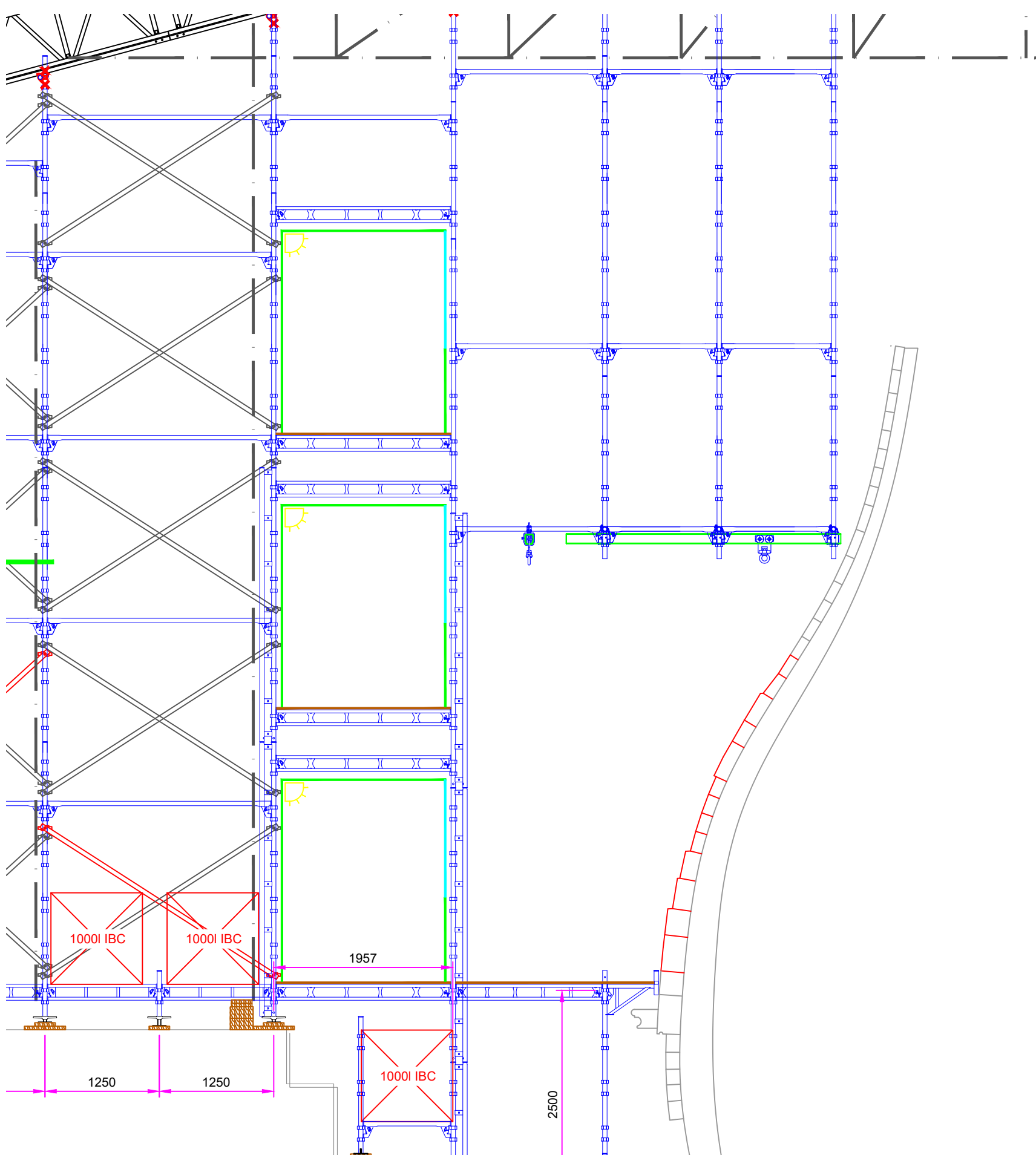


LEVEL 1 - STARTING WORKZONE



AMENDMENT 1 - LEVEL 2 WORKZONE



AMENDMENT 2 - LEVEL 2 WORKZONE

HAKI COMPONENTS

SCAFFOLD HAS BEEN DESIGNED AND CALCULATED FOR THE USE OF HAKI COMPONENTS, ONLY GENUINE HAKI COMPONENTS ARE TO BE USED IN THE ERECTION OF THIS SCAFFOLD

SG4:15

THE SCAFFOLDERS WILL ERECT THE SCAFFOLDING IN ACCORDANCE WITH THE REQUIREMENTS OF THE GUIDANCE NOTES SG4:15

SHEETING

SCAFFOLD IF DESIGNED TO BE FULLY SHEETED IN MONARFLEX

TUBING

ALL STEEL SCAFFOLD TUBES USED ARE TO BE 'GALVANISED' COMPLYING WITH TABLE 5.10 OF NASC TG20:13

NODE POINT NOTE

ALL BRACES SHOULD BE FIXED WITHIN 300mm CENTRES OF THE INTERSECTION OF FIXED TUBES (NODE)

MAXIMUM SWL

THE WORKING PLATFORMS HAVE BEEN DESIGNED FOR A MAXIMUM SAFE WORKING LOAD OF:

- 3.0 kN/m² (300 kg/m²) ON ONE WORKING PLATFORM,
- 1.5 kN/m² (150 kg/m²) ON A SECOND WORKING PLATFORM, & 1.50 kN/m² (150 kg/m²) ON THE INSIDE BOARDS.

ALL LOADING ZONES HAVE BEEN DESIGNED FOR A MAXIMUM SAFE WORKING LOAD OF:

- 5.0 kN/m² (500 kg/m²) ON ONE WORKING PLATFORM

ALL PUBLIC ACCESS ZONES HAVE BEEN DESIGNED FOR A MAXIMUM SAFE WORKING LOAD OF:

- 5.0 kN/m² (500 kg/m²) ON ONE WORKING PLATFORM

THESE LOADS MUST NOT BE EXCEEDED

All loads are unfactored

LOAD BEARING FITTINGS

- ALL STRUCTURAL SECURING AND CHECK FITTINGS SHOWN ARE TO BE A MINIMUM OF 'CLASS B' FITTINGS.

DESIGN NOTES

- LOAD BEARING COUPLERS MUST BE USED ON ALL TIE RELATED COMPONENTS UNLESS OTHERWISE SHOWN / STATED
- ALL TIE FORCES AND LOCATION CALCULATED IN ACCORDANCE WITH BS EN 1991-1-4:2005
- ALL ERECTION DETAILS & PRACTICES OF:
 - TG20:13 - OPERATIONAL GUIDE - A COMPREHENSIVE GUIDE TO GOOD PRACTICE FOR TUBE AND FITTING SCAFFOLDING
 - TG4:19 - ANCHORAGE SYSTEMS FOR SCAFFOLDING
 - SG4:15 - PREVENTING FALLS IN SCAFFOLDING AND FALSEWORK ARE TO BE CARRIED OUT AT ALL TIMES. PLEASE NOTE THE GUIDANCE NOTES SHOWN ARE NOT EXHAUSTIVE

EDGE PROTECTION

LOADINGS ONTO THE TEMPORARY EDGE PROTECTION HAVE BEEN TAKEN IN ACCORDANCE WITH BS EN 13374:2004

FOUNDATIONS

THE CLIENT / PRINCIPAL CONTRACTOR IS RESPONSIBLE TO ENSURE THAT THE PROPOSED GROUND BEARING IS SUITABLE TO SUSTAIN ANY IMPOSED LOADING FROM THE TEMPORARY STRUCTURE.

DEBRIS

PLATFORMS ARE TO BE REGULARLY CLEANED AND CLEARED OF DEBRIS

CDM REGULATIONS 2015

THE CONSTRUCTION (DESIGN AND MANAGEMENT) REGULATIONS 2015, REGULATION 11 REQUIRES THAT WE MAKE CUSTOMERS AWARE OF THEIR DUTIES IMPOSED BY THE REGULATIONS. GUIDANCE ON YOUR DUTIES ARE PUBLISHED BY THE HSE IN THE FORM OF AN APPROVED CODE OF PRACTICE

BEAM BRACING

ALL 450mm HAKI BEAMS ARE TO BE BRACED / RESTRAINED IN ACCORDANCE WITH THE FOLLOWING RECOMMENDATIONS:

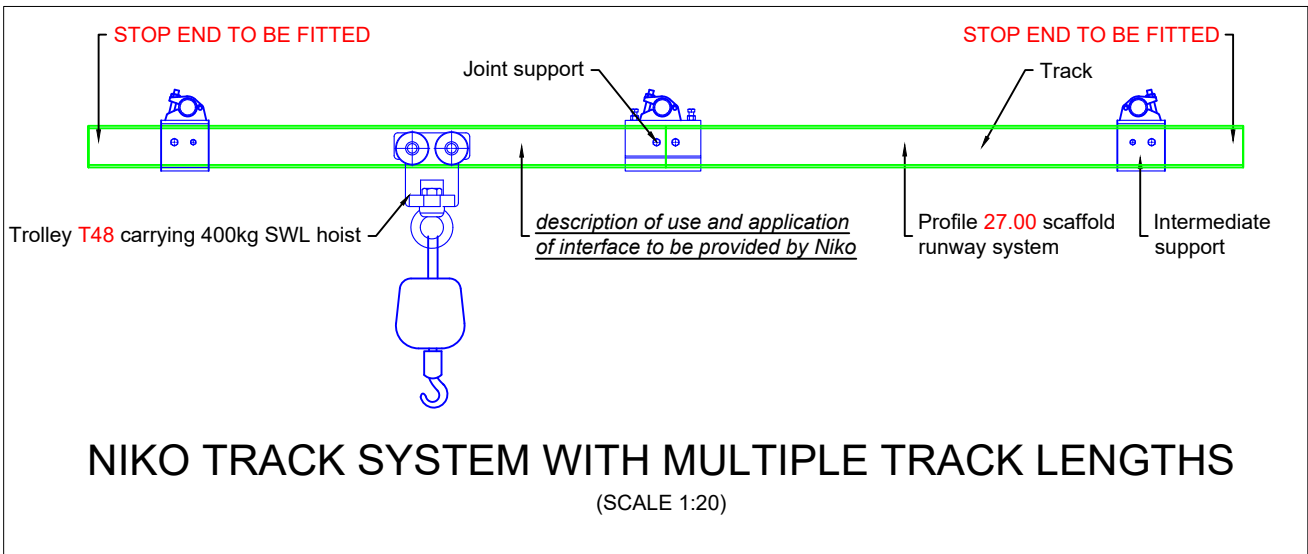
- TOP CHORD RESTRAINT / LACE TUBES 1000mm MAX CENTRES.
- BOTTOM CHORD RESTRAINT / LACE TUBES 2000mm MAX CENTRES.
- PLAN BRACING ON / ADJACENT TOP CHORD (COMPRESSION CHORD) MAXIMUM OF 1000mm NODE CENTRES
- KNEE BRACING AT NODES AT 2000mm CENTRES MAX.

BEAM BRACING

ALL 750mm HAKI BEAMS ARE TO BE BRACED / RESTRAINED IN ACCORDANCE WITH THE MANUFACTURERS GUIDELINES AND INSTALLATION PROCEDURES



NIKO TRACK SCAFFOLD RUNWAY SYSTEM



NIKO TRACK SYSTEM WITH MULTIPLE TRACK LENGTHS (SCALE 1:20)

NOTES:
This drawing is confidential and is the exclusive property of RDG Engineering (TW) Ltd. No unauthorised use, copy or disclosure is to be made and is to be returned upon request.

The customer should check that we have correctly interpreted his / her requirements and that all loadings, dimensions, details, erection and striking sequences, etc, are correct and practicable.

The customer is to ensure that the ground, structure and / or base provided for our scaffold is adequate to support the loads applied without settlement, including the provision for any necessary spreaders.

Drawing Notes:
READ ALL NOTES ON DRAWING.

ALL bracing / restraints are to be installed as per drawing.

All design and erection of scaffolds are to conform with the following British Standards and Codes Of Practices where applicable:

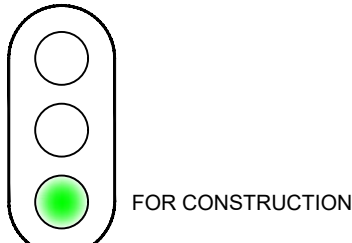
- BS EN 39:2001 Loose steel tubes for tube and coupler scaffolds - Technical delivery conditions
- BS 1139-1-2:1990 Metal Scaffolding - Part 1: Tubes - Section 1.2 Specification for aluminium tube
- BS 1139-2-2:2009 Metal Scaffolding - Part 2: Couplers - Section 2.2: Aluminium couplers and special couplers in steel - Requirements and test methods
- BS 2482:2009 Specification for timber scaffold boards
- BS 5975:2019 Code of practice for temporary works procedures and the permissible stress design of falsework
- BS EN 12811-1:2003 Temporary works equipment - Part 1: Scaffolds - Performance requirements and general design
- BS EN 12812:2008 Falsework - Performance Requirements and General Design
- BS EN 1991-1-1:2002 Eurocode 1: Actions on Structure - Part 1-1: General Actions - Densities, Self-weight, Imposed Loads for Buildings
- BS EN 1991-1-3:2003 Eurocode 1: Actions on Structure - Part 1-3: General Actions - Snow Actions
- BS EN 1991-1-4:2005 Eurocode 1: Actions on Structure - Part 1-4: General Actions - Wind Actions
- BS EN 1993-1-1:2005 Eurocode 3: Design of steel structures - Part 1-1: General rules and rules for buildings
- TG20:13 Design Guide - Technical Guidance on the use of BS EN 12811-1
- TG04:19 Anchorage Systems
- SG04:15 Preventing Falls in Scaffolding
- SG25:14 Access and Egress from Scaffolds
- CG08:09 Scaffold Design

LOAD BEARING COUPLERS MUST BE USED ON ALL TIE RELATED COMPONENTS UNLESS OTHERWISE SHOWN / STATED

Unless stated otherwise genuine products / components are to be used to ensure that structural performance can be guaranteed.

No alteration in or which may affect the loading is to be made without reference to RDG Engineering Design Office.

Dimensions:
All dimensions are in mm and centre to centre unless otherwise stated. Written dimensions will take precedence over scaled dimensions.



00	25/08/2020	Issued For Construction	JB	--	--	--
P2	21/08/2020	Issued For Approval	JB	--	--	--
P1	03/08/2020	Issued For Approval	JB	JB	CDE	RDG
ISSUE	DATE	DESCRIPTION OF ISSUE	DRN	ENG	CHECKED	APPROVED

CLIENT

The National Museum of the Royal Navy

RDG
ENGINEERING (TW) LTD
1st Floor, Derbyshire House, St Chad's Street, London.
WC1H 8AG. tel: 020 7036 1650
e-mail: design@rdgengineering.co.uk

PROJECT

HMS Victory Portsmouth

DRAWING TITLE

Amendments to Working Zones

CLIENT'S DRAWING REFERENCE		
SCALE	RDG ENGINEERING DRG No.	ISSUE
@ A1	5606-01-02-109	00
THIS DRAWING AND THE INFORMATION CONTAINED IS CONFIDENTIAL AND IS THE PROPERTY OF RDG ENGINEERING (TW) LTD. IT IS ISSUED ON THE CONDITION THAT IT SHALL NOT BE REPRODUCED COPIED OR PASSED TO THIRD PARTIES WITHOUT THE WRITTEN APPROVAL OF RDG ENGINEERING (TW) LTD.		