

# MILKOM PARK 2022

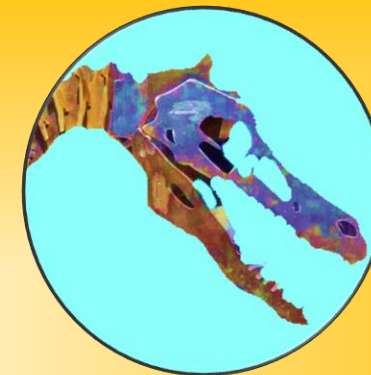
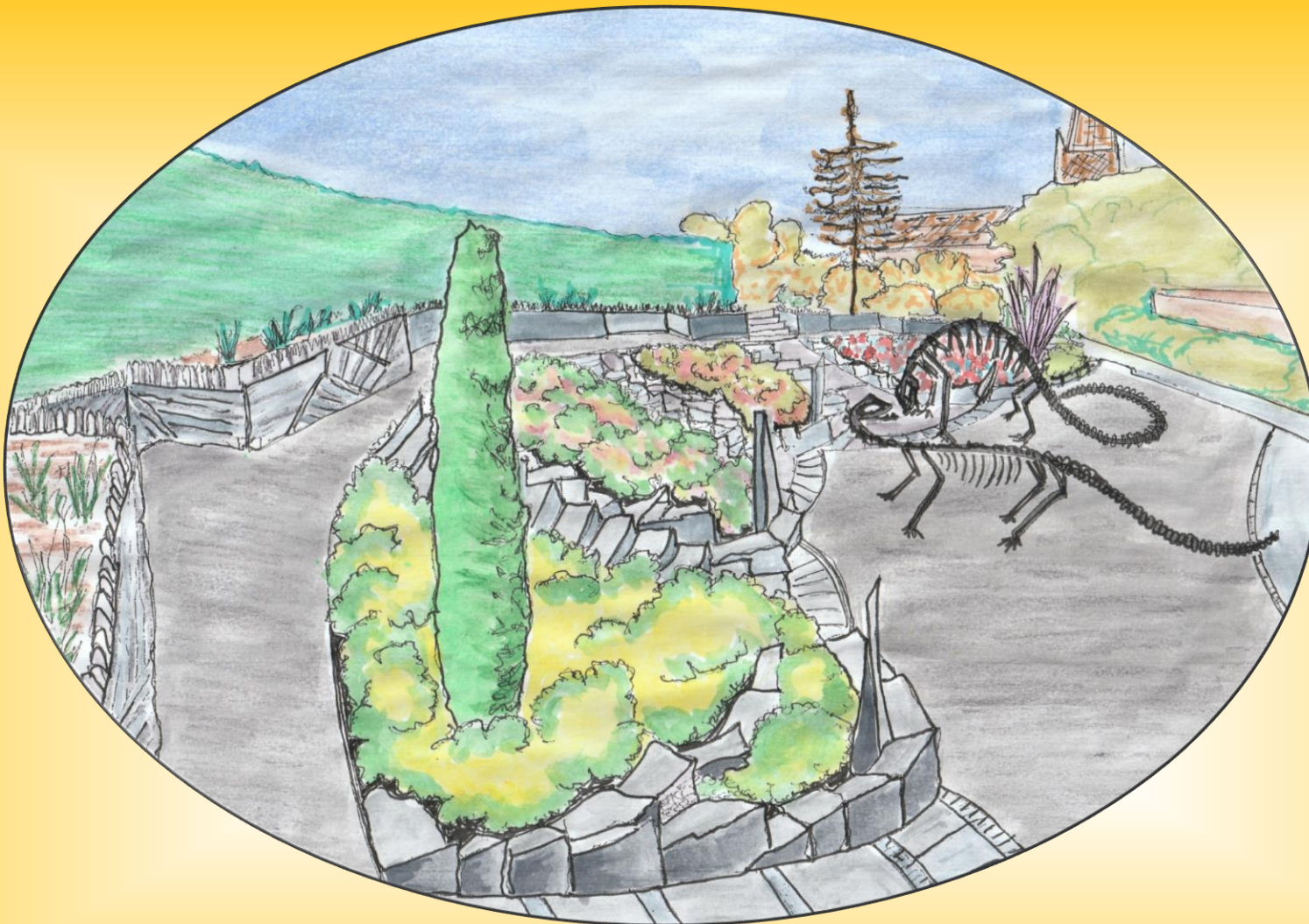


Parks, green space, and trails enable and encourage people to exercise. Exposure to nature improves psychological and social health. Play is critical for child development. Parks help build healthy, stable communities.



The top part of Millom Park is now looking extremely tired and neglected! Indeed the 23 tractor tyres look out of place.





It is hoped that the new makeover will appeal to a variety of users. Specific attention will be focussed on using locally sourced materials such as slate and the use of iron.

**Large Velociraptor anatomically correct dinosaur sculpture - Made from 10mm structural steel plate 14 feet long**



Lakeland Steel fabricated this dinosaur. They are a locally based company in Devonshire Road.





The existing tyres will need to be disposed of before work can begin! Where possible existing shrubs will be pruned and left in situ.



The new design is aimed at inclusiveness! From wheelchair users to more able bodied people. Through solar panels it is hoped that structures will be lit up at night.





The area for re-design is at the highest point of the Park. It has an amazing view over the estuary and it is hoped through trimming the hedge back, benches can be placed at certain vantage points for everyone to appreciate the panorama.





Views from the Park!





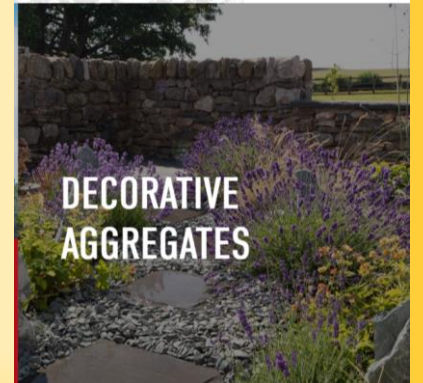
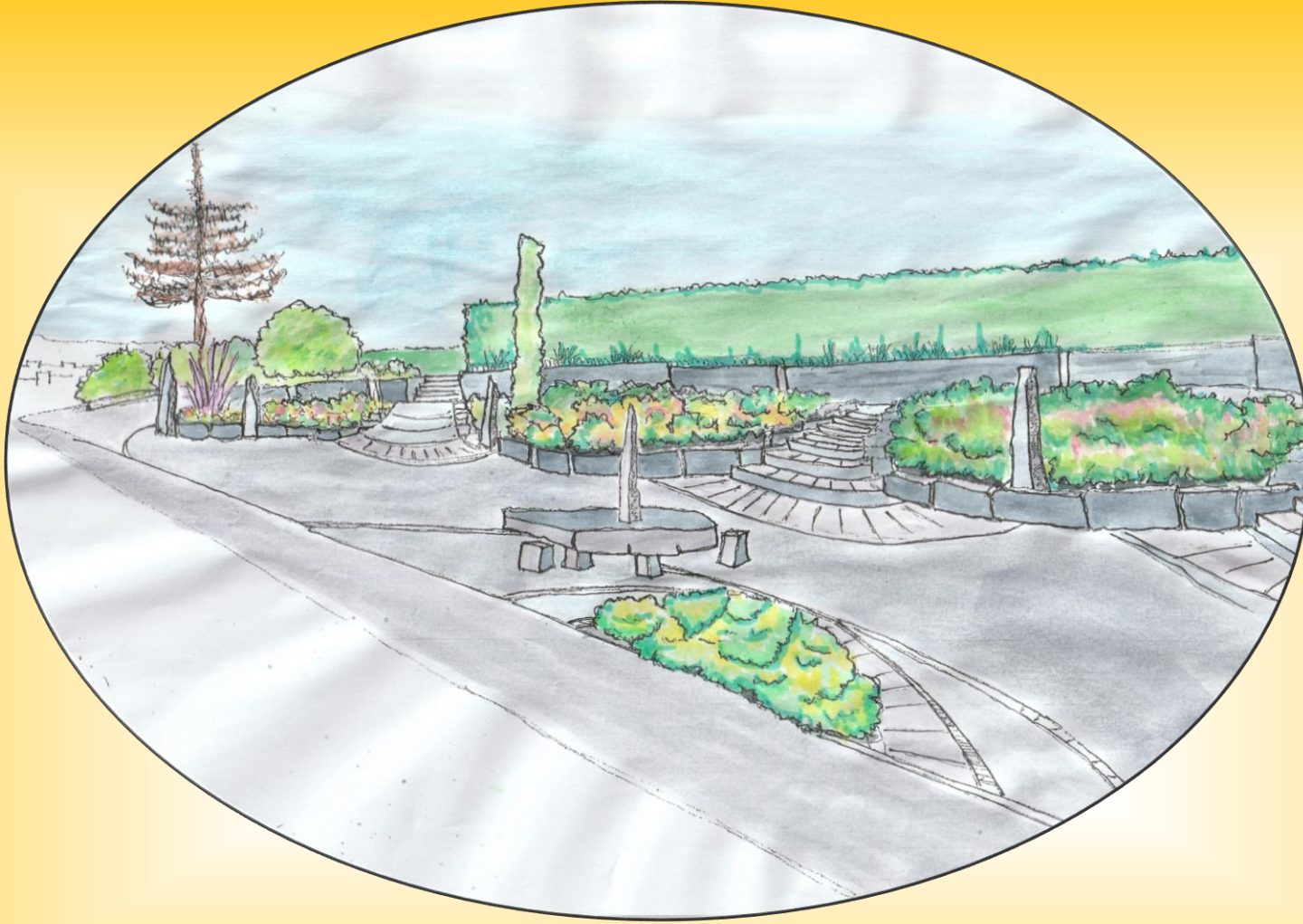
Views from the Park! We want everyone  
to enjoy this wondrous landscape.







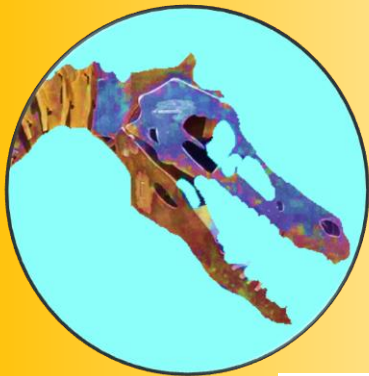
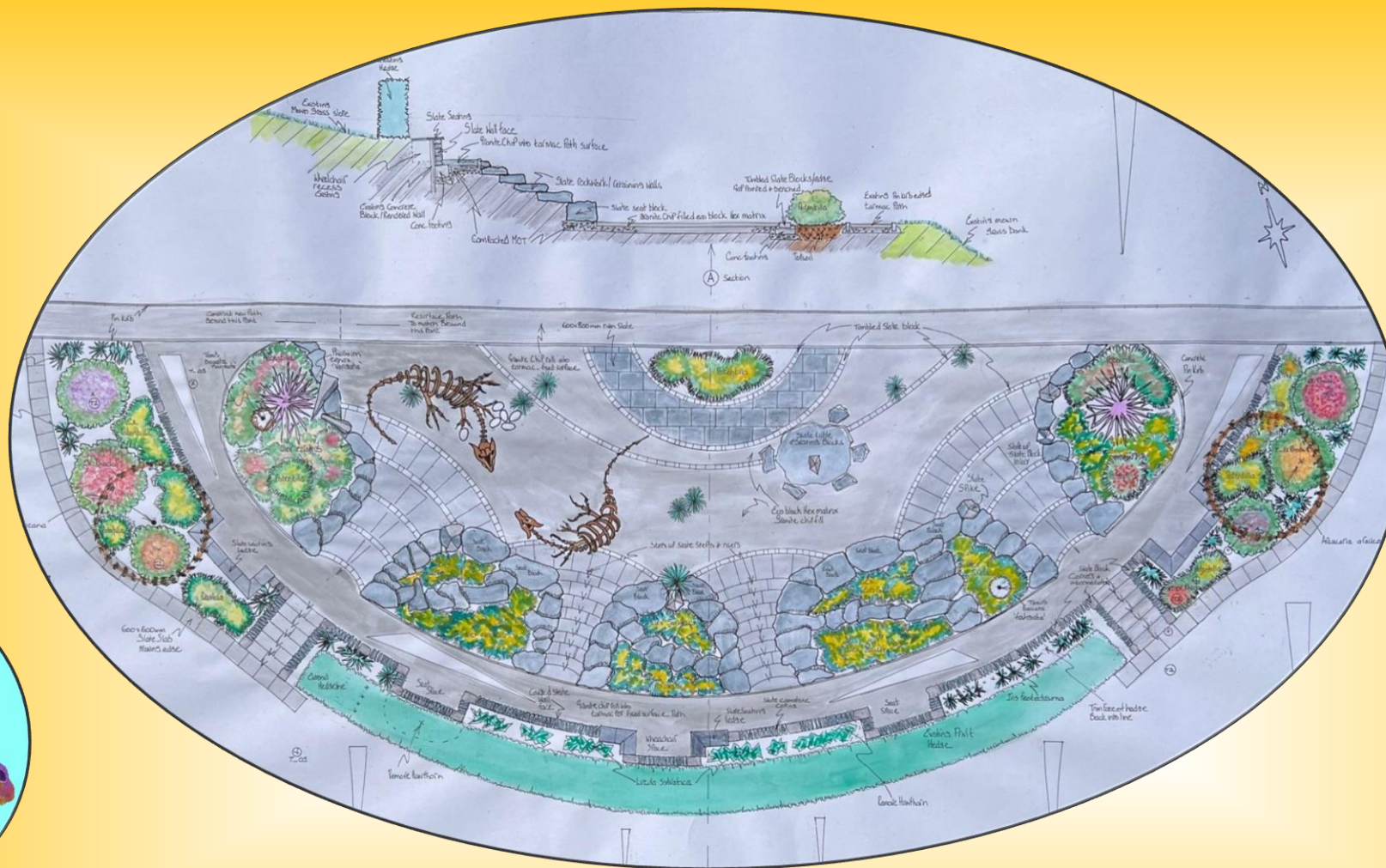
Ghyll Scaur



Burlington Slate

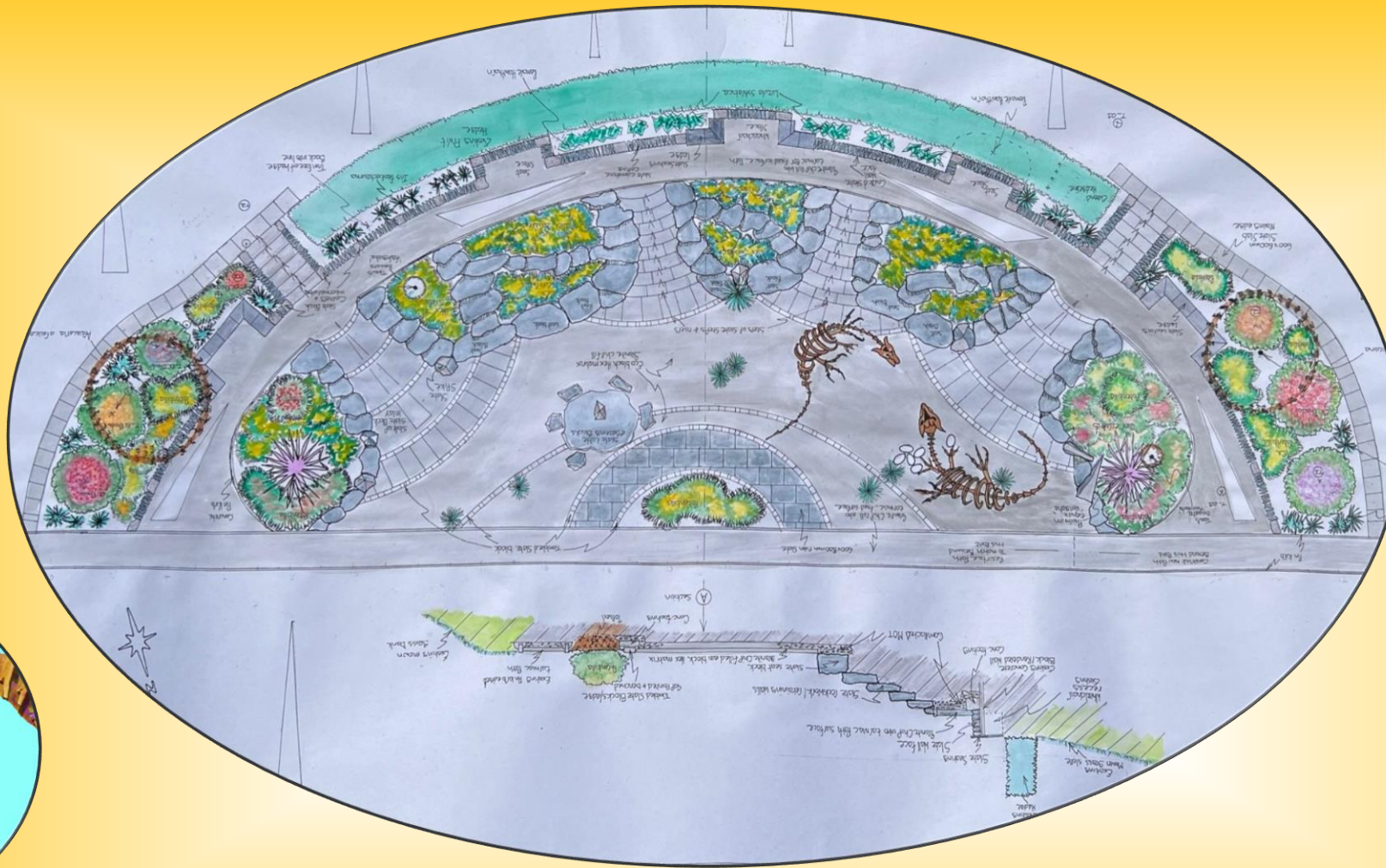
It is hoped that by using locally sourced materials partnerships can be forged with local contractors to make this design a reality!





The new design makes full use of existing shrubs as well as maximising the space to it's full potential.





The new design re-defines the seating area around the hedge allowing wheelchair access. As a result the whole Park will have to undergo a revamp of all footpaths in and around the Park.

## Possible Local Participation

We are going to need help from the community to provide ideas for the hard structure around this area. Possible activity trail with 2D insets around the small walls of dinosaur footprints for example that will lead onto worksheets? Audio recordings (bird songs, poems written and read by local school children, water.....)

Primary Schools

Secondary School

Haverigg Enterprise

Ghyll Scaur

Burlington

Lakeland Steel

Norman Nicholson Society

St George's Care Home

Lapstone Care Home

Local businesses

## Vision/Objectives

- To provide a park that demonstrates inclusiveness for all.
- To provide a quiet sensory garden which will stimulate the basic senses!
- Increase facility usage of all ages!
- Improve community health, wellbeing and security.
- a diversity of recreational uses and options for the community.
- A place where the community feels secure.
- A place of pride for the past, present and the future.