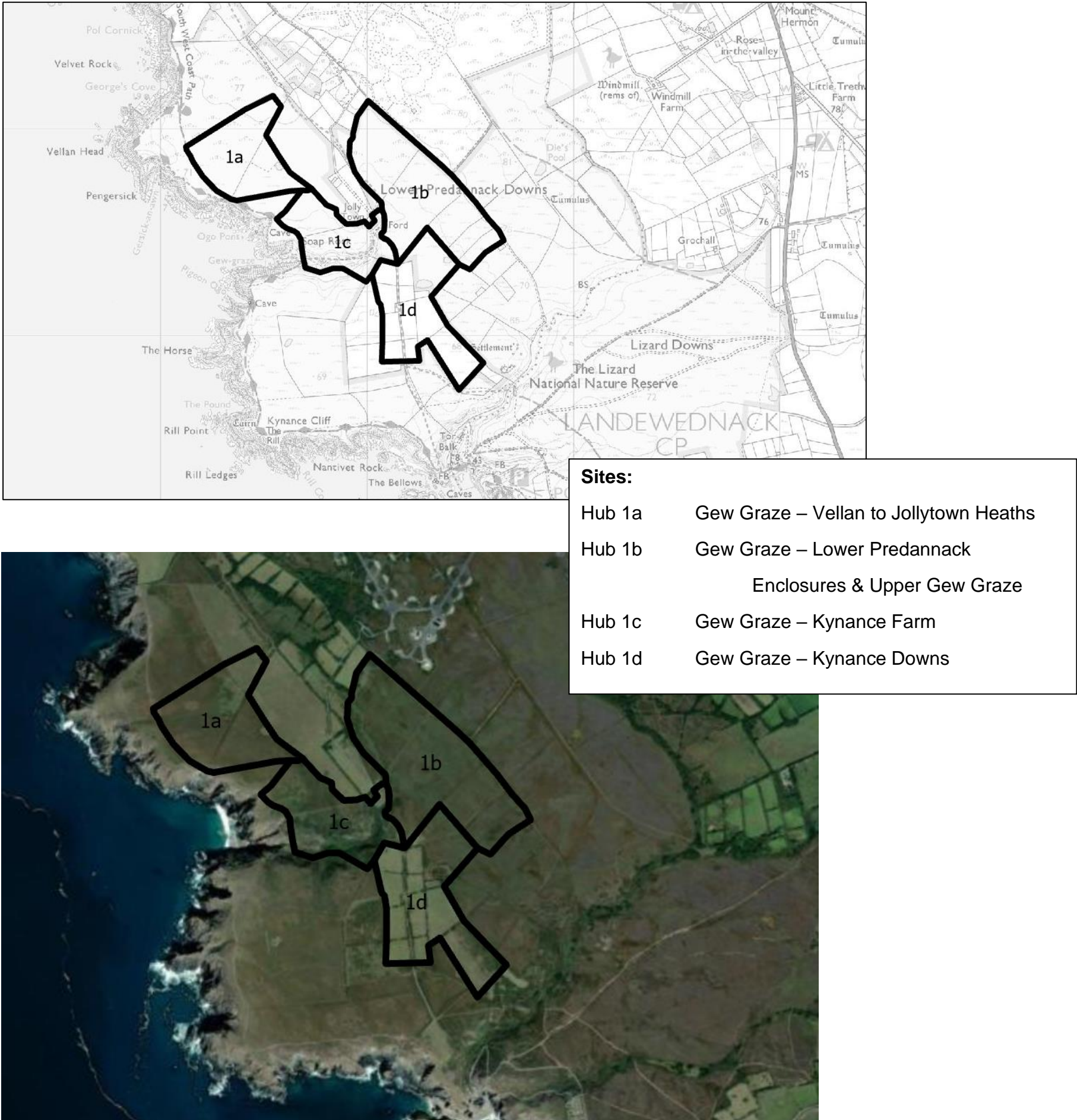


PLANNED LAND MANAGEMENT WORKS FOR 2023/2024
THE LIZARD NNR SPECIES RECOVERY PROGRAMME PROJECT
HUB 1 GEW GRAZE



Key to Hub Management Plans

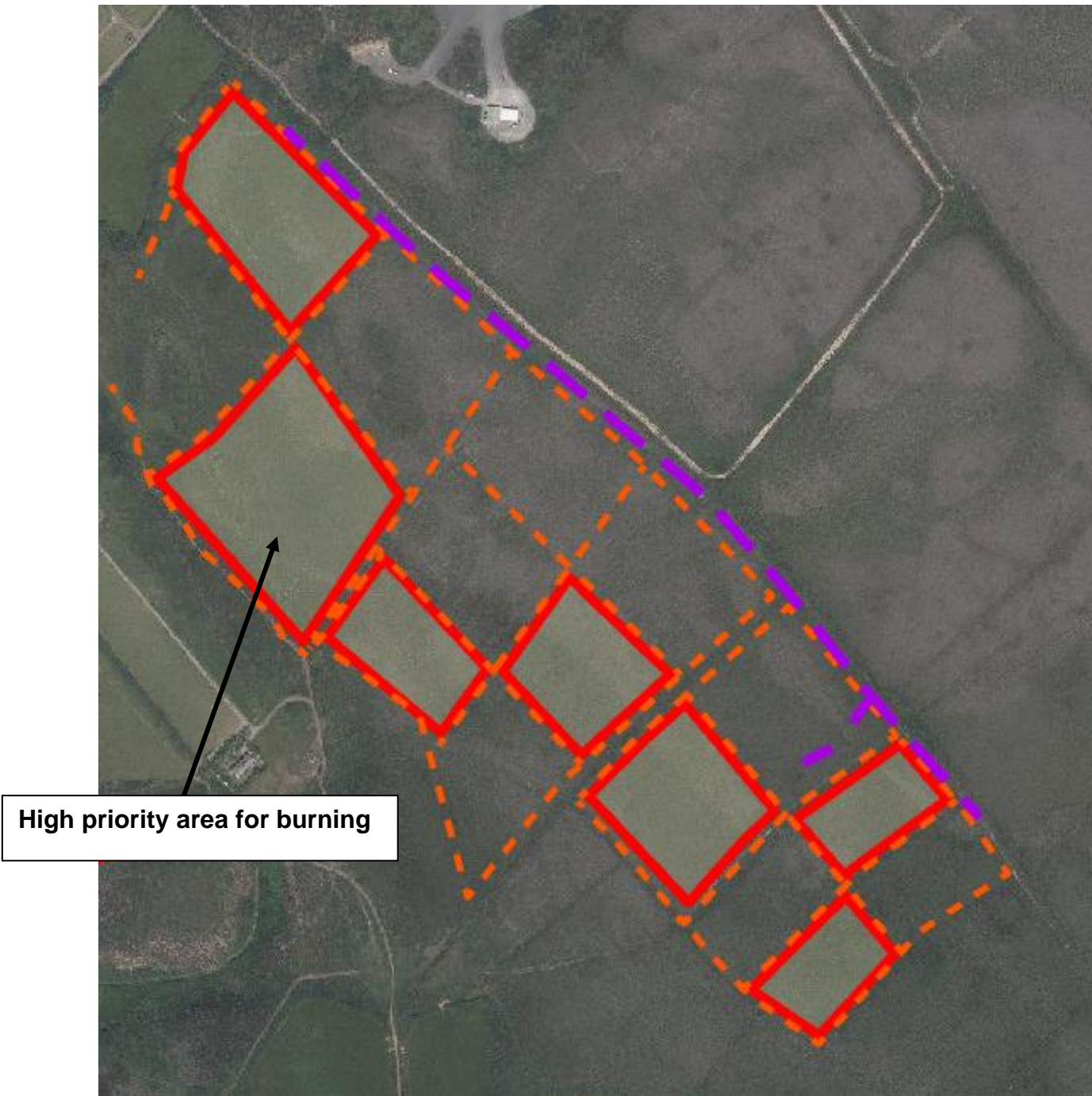
Purple dashed lines	Mediterranean Temporary Pond pathways/scrapes to restore/create
Orange dashed lines	Firebreaks
Red outlined area	Burn areas
Green outlined area	Scrub clearance
Deep blue area	New pool/mere
Light blue area	Restoration/excavation of existing pool/mere
Purple triangle	Pinch point creation

HUB 1a: GEW GRAZE – VELLAN TO JOLLYTOWN HEATHS



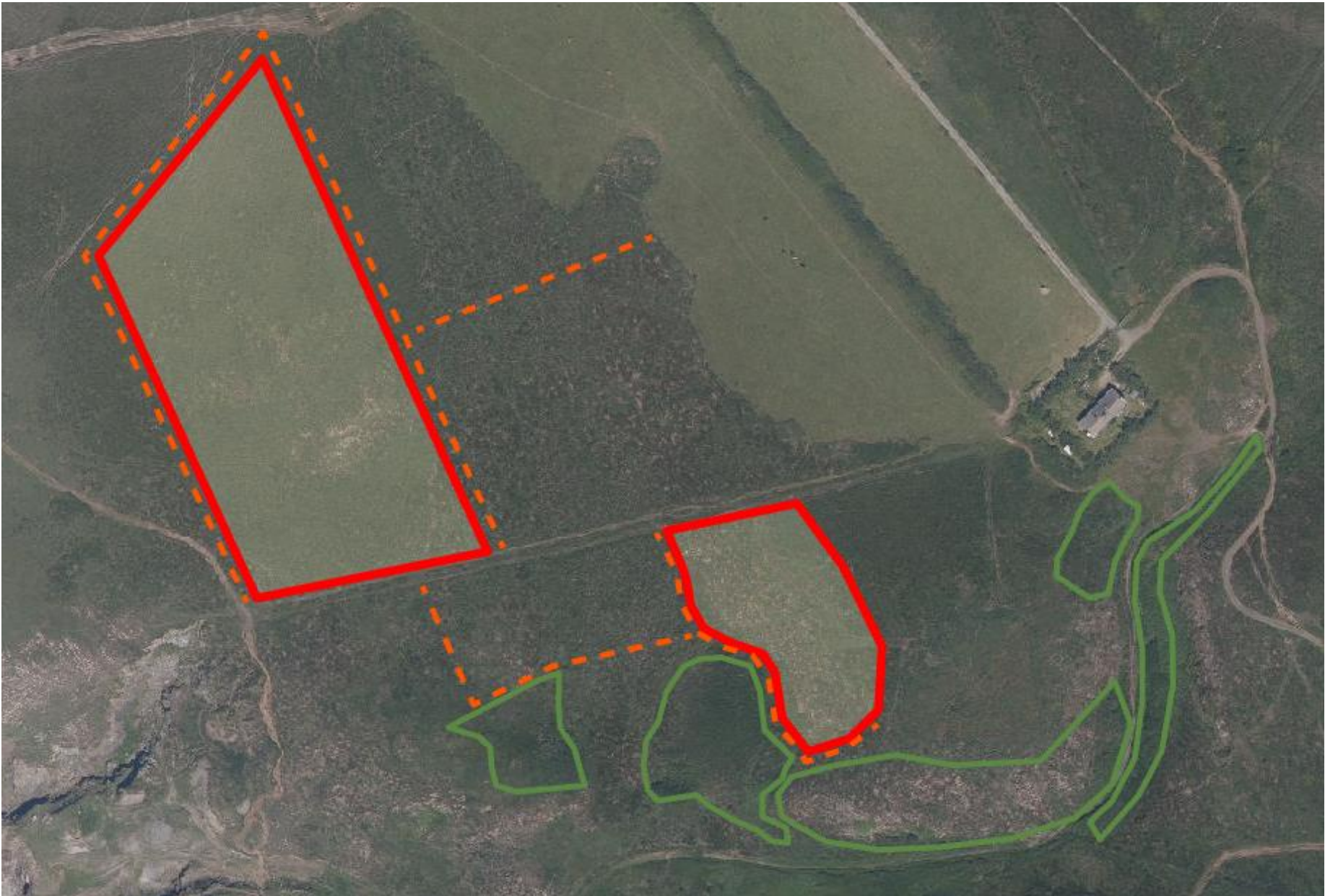
Task	Quantity	Notes
1. Creation of new meres	1x 30m x 25m (750sqm) in heath 1x 32m x 32m in field	Heath = SW67421500. Field = exact position to be determined. Remove surface vegetation and excavate down to 700mm. Lose arisings/spoil in field boundaries.
2. Excavation of extant meres	2x 60% pool extent excavated	Remove surface vegetation and excavate down to 700mm. Lose arisings/spoil in field boundaries.
3. Heath burn: cut firebreaks	c. 2200m	
4. Heath burn	c. 2.5ha	Three areas to be burnt – all high priority. Burn between meres to encourage movement of stock.
5. Creation of pinch points	5	Widen small gaps to approximately 2.5m-3m wide and 500mm deep. Lose arisings/spoil in field boundaries.

HUB 1b: GEW GRAZE – LOWER PREDANNACKS ENCLOSURES & UPPER GEW GRAZE



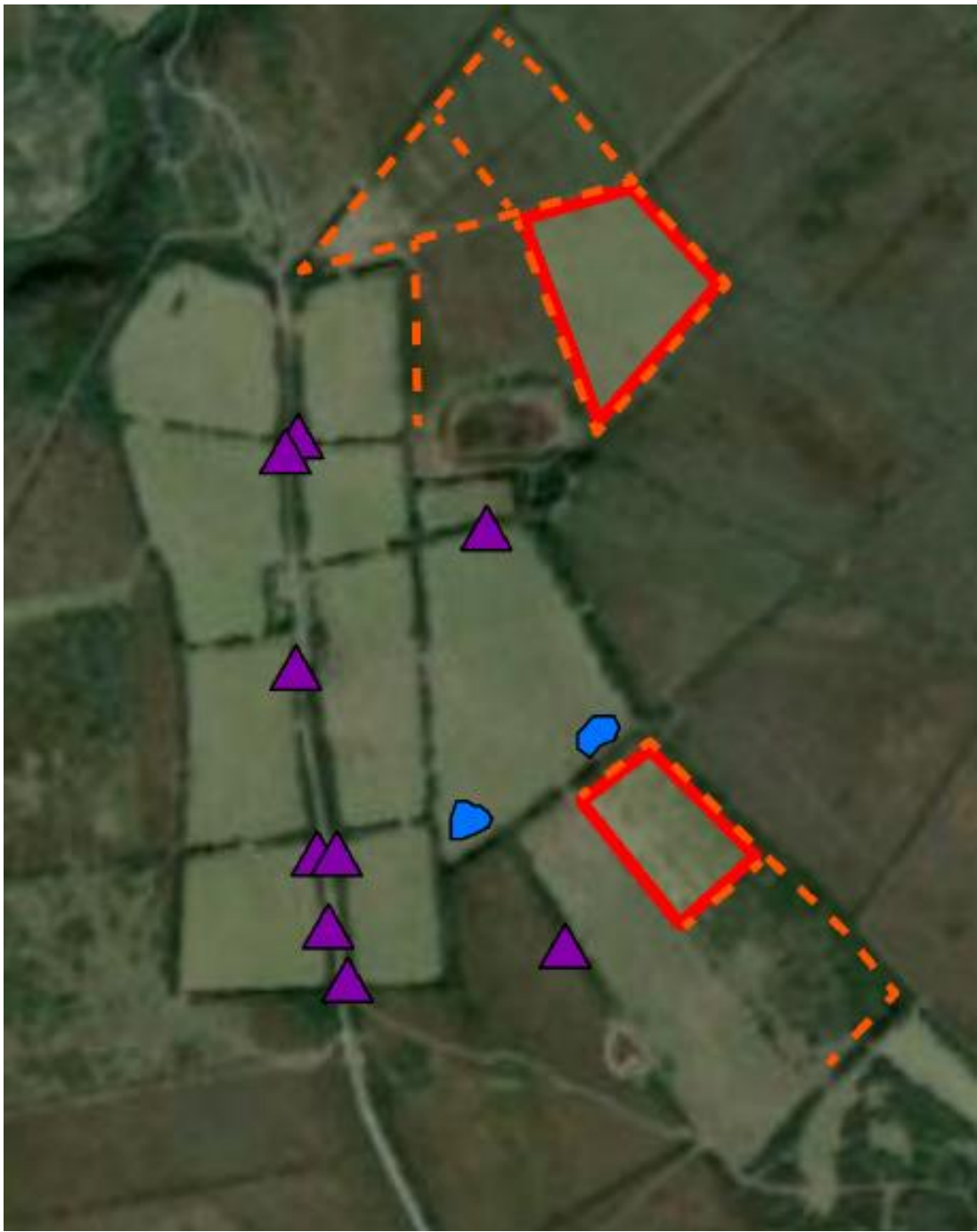
Task	Quantity	Notes
1. Heath burn: cut firebreaks	c. 5300m	
2. Heath burn	c. 8.5ha	One high priority area to burn.
3. Restoration of Mediterranean Temporary Pond habitat	c. 900m	Create undulating base to trackway to ensure water stands within low-lying stretches (up to 200mm deep in lowest stretches) every 20m or so. Lose vegetation/spoil in adjacent field boundary.

HUB 1c: GEW GRAZE – KYNANCE FARM



Task	Quantity	Notes
1. Scrub clearance	c. 1.1ha	<p>0.15ha (1500sqm) in valley bottom (easternmost area of scrub) likely to require use of a tractor with forestry attachment.</p> <p>Remaining 0.93ha (9300sqm) likely to require manual clearance (especially on rock outcrops) and stump treatment with brash removed/burnt. Include firebreak cut between two adjacent scrub areas.</p>
2. Heath burn: cut firebreaks	c. 890m	Possible additional firebreaks around rock outcrops required to protect lichens and bryophytes (awaiting survey information).
3. Heath burn	c. 2.2ha	Both areas of high priority to burn.

HUB 1d: GEW GRAZE – KYNANCE DOWNS



Task	Quantity	Notes
1. Heath burn: cut firebreaks	c. 1600m	
2. Heath burn	c. 1.7ha	Both areas of high priority to burn.
3. Creation of new meres	2x 500sqm (approximately)	Remove surface vegetation and excavate down to 700mm. Lose arisings/spoil in field boundaries.
4. Creation of new pinch points	9	Widen small gaps to approximately 2.5m-3m wide and 500mm deep. Lose arisings/spoil in field boundaries.