

- Legend:**
- none rated Partition
 - Class A Partition
 - Class B Partition
 - Class C Partition
 - Class D Partition
 - Class E Partition
 - Ceiling mounted smoke detector
 - Ceiling mounted heat detector
 - Carbon Monoxide Detector
 - Proposed steel beams to be detailed and specified by the structural engineer. Including padstones. Blockwork specification locally to be confirmed by the structural engineer.
 - Wall mounted extract fan
 - Ceiling mounted extract fan
 - Ridge vent
 - Fonterra 374 rectangular air brick with cavity sleeve and internal metal grille. 10,250mm² EA. Colour Red.
 - Primary means of escape
 - Secondary means of escape
 - Loft hatch
 - Span of Rafter / Ceiling Joists
 - Span of solid floor joists
 - Span of engineered floor joists
 - Span of Beam & Block floor
 - Fire stopping
 - Soil vent pipe
 - Sealed outlet
 - Drainage duct
 - Foul drainage
 - Storm drainage
 - Rain water pipes
 - In-coming services

Classification of Linings	
Small rooms of maximum internal floor area of 4m ²	D-s3-d2
Garages (as part of a dwellinghouse) of maximum floor area of 40m ²	C-s3-d2
Other rooms (including garages)	C-s3-d2
Other Circulation Spaces within a dwelling	C-s3-d2
Other circulation spaces (including common areas of blocks of flats)	B-s3-d2

T1 230315 SG issued for review and comment

Revision Notes:
Drawing Status:

TENDER

hssp
architects

Pera Business Park, Nottingham Road
Milton Mowbray, LE13 0PB

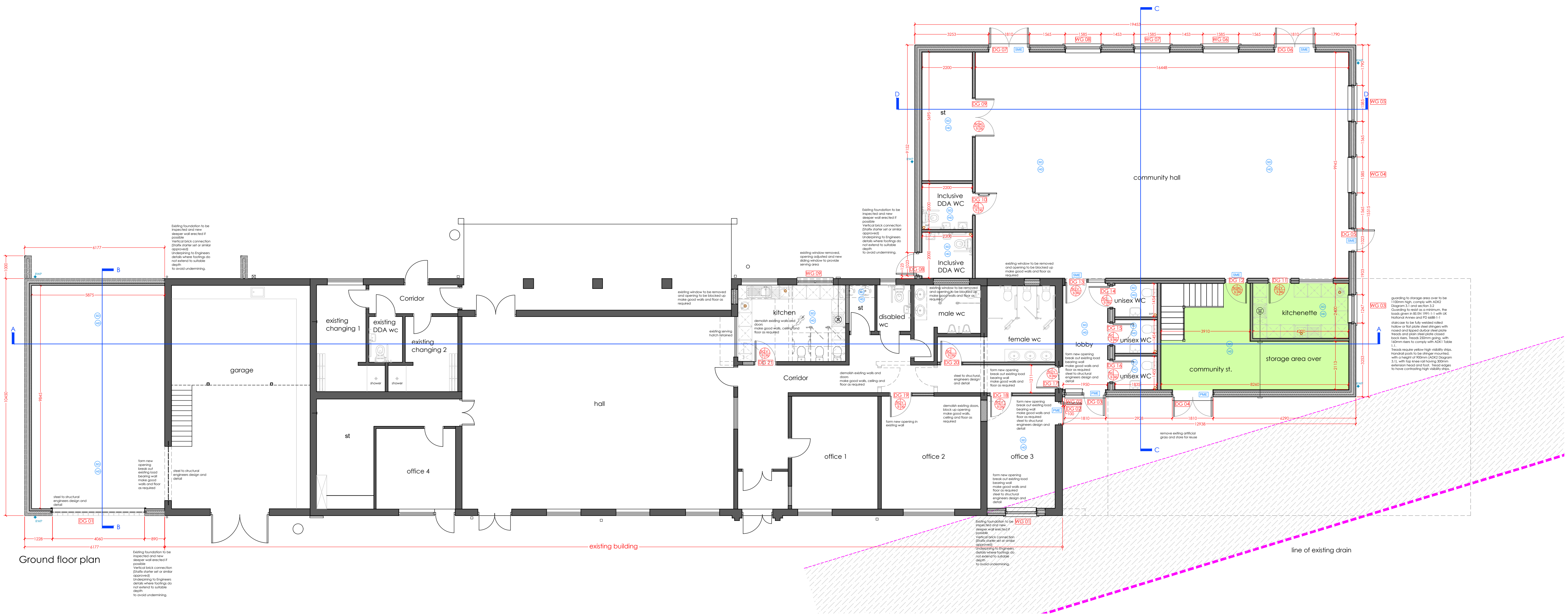
Telephone: 01664 563 288 Fax: 01664 563 360
E-Mail: info@hssparchitects.co.uk Web: www.hssparchitects.co.uk

Project:
Proposed Extensions and Alterations to
Jubilee Hall
Stadon Road, Anstey
For Anstey Parish Council

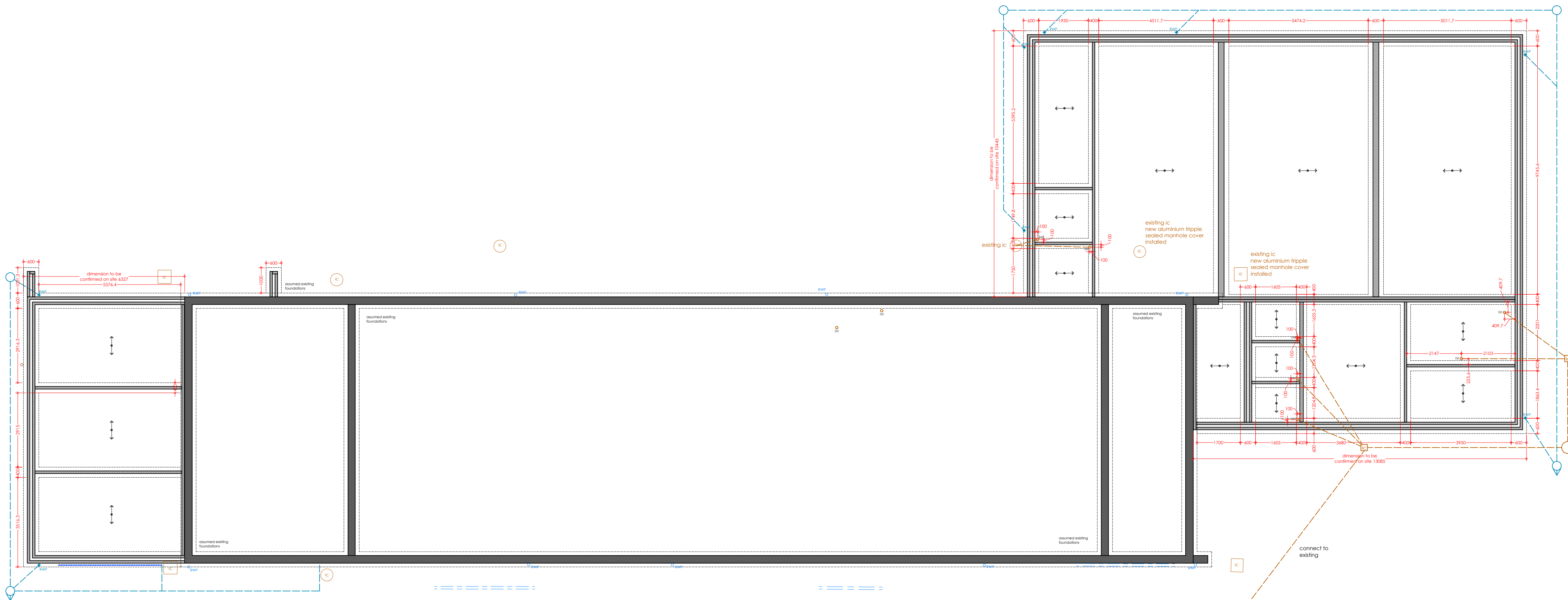
Title:
Proposed Plans

Scale:	Drawn:	Checked:	Date:
1:100	SG	HC	March '23
Drawing No:	7728-04-005	Revision:	T1

HSSP A1



Ground floor plan



Foundation plan

