

NOTES

1. THIS DRAWING SHALL BE READ IN CONJUNCTION WITH THE SPECIFICATION, ARCHITECTURAL, STRUCTURAL AND ALL OTHER RELEVANT TENDER DRAWINGS.
2. LOCATIONS OF ALL THE ACCESSORIES INCLUDING LIGHT FITTINGS, SWITCHES, SOCKETS ETC. SHALL BE MARKED OUT ON SITE BY THE CONTRACTOR FOR THE CLIENT DESIGN TEAM TO REVIEW AND APPROVE PRIOR TO FIRST FIX WORKS COMMENCING.
3. THE ELECTRICAL SERVICES INSTALLATIONS UNDERTAKEN BY THE CONTRACTOR SHALL BE IN STRICT ACCORDANCE WITH BS-7671:2018 (MOST RECENT VERSION).
4. THE CONTRACTOR SHALL BE RESPONSIBLE FOR THE FULL COORDINATION OF THE SERVICES WITH ALL OTHER TRADES AND THE STRUCTURE.
5. THE EMERGENCY LIGHTING INSTALLATIONS SHALL MEET THE REQUIREMENTS OF BS-5266.

THIS IS A DEVELOPED DESIGN DRAWING FOR A DESIGN AND BUILD PROJECT TO RIBA DESIGN STAGE 3. IT ILLUSTRATES THE DESIGN PHILOSOPHY AND SHOWS THE EXTENT OF THE SERVICES INSTALLATIONS. THE LOCATIONS OF HORIZONTAL AND VERTICAL RUNS ARE APPROXIMATE. THE CONTRACTOR SHALL MAKE ALLOWANCE TO COMPLETE THE TECHNICAL DESIGN AND FINALISE ANY CO-ORDINATION BETWEEN BUILDING SERVICES, STRUCTURE AND ARCHITECTURE IN THE PREPARATION OF THE TECHNICAL DESIGN DRAWINGS. THE CONTRACTOR SHALL MAKE ALLOWANCE TO SUPPLY, INSTALL, TEST AND COMMISSION FULLY OPERATIONAL SYSTEMS IN ORDER TO ACHIEVE THE EMPLOYERS REQUIREMENTS AND REQUIREMENTS DETAILED WITHIN THE PERFORMANCE SPECIFICATION.

ISSUED FOR TENDER

SMALL POWER LEGEND	
	DISTRIBUTION BOARD
LIGHTING LEGEND	
	LED RECESSED MODULAR 600x600 LUMINAIRE - 39.9W DEXTRA - MODRU L68
	SELF CONTAINED LED 3 HR EMERGENCY LUMINAIRE C/W DIRECTIONAL LENS UP PANEL DEXTRA - EXI LED M3 LE3 + EXI UL ISO7010
	LED RECESSED EMERGENCY LIGHT - 2.0W - IP20 RATED C/W 3HR EMERGENCY BATTERY BACK UP DEXTRA - LED4R NM3 LE3 + OPEN AREA LENS
	1 WAY RETRACTABLE LIGHTING SWITCH (No. OF GANGS AS DETAILED)
	PIR DETECTOR FLUSH MOUNTED IN CEILING FOR LIGHTING CONTROL LCM CONTROL
	LIGHTING CONTROL MODULE
	DENOTES EXISTING DEVICE/ACCESSORY

Rev.	Description	By	Date

Client

Project  
**Tech Skills Refresh**

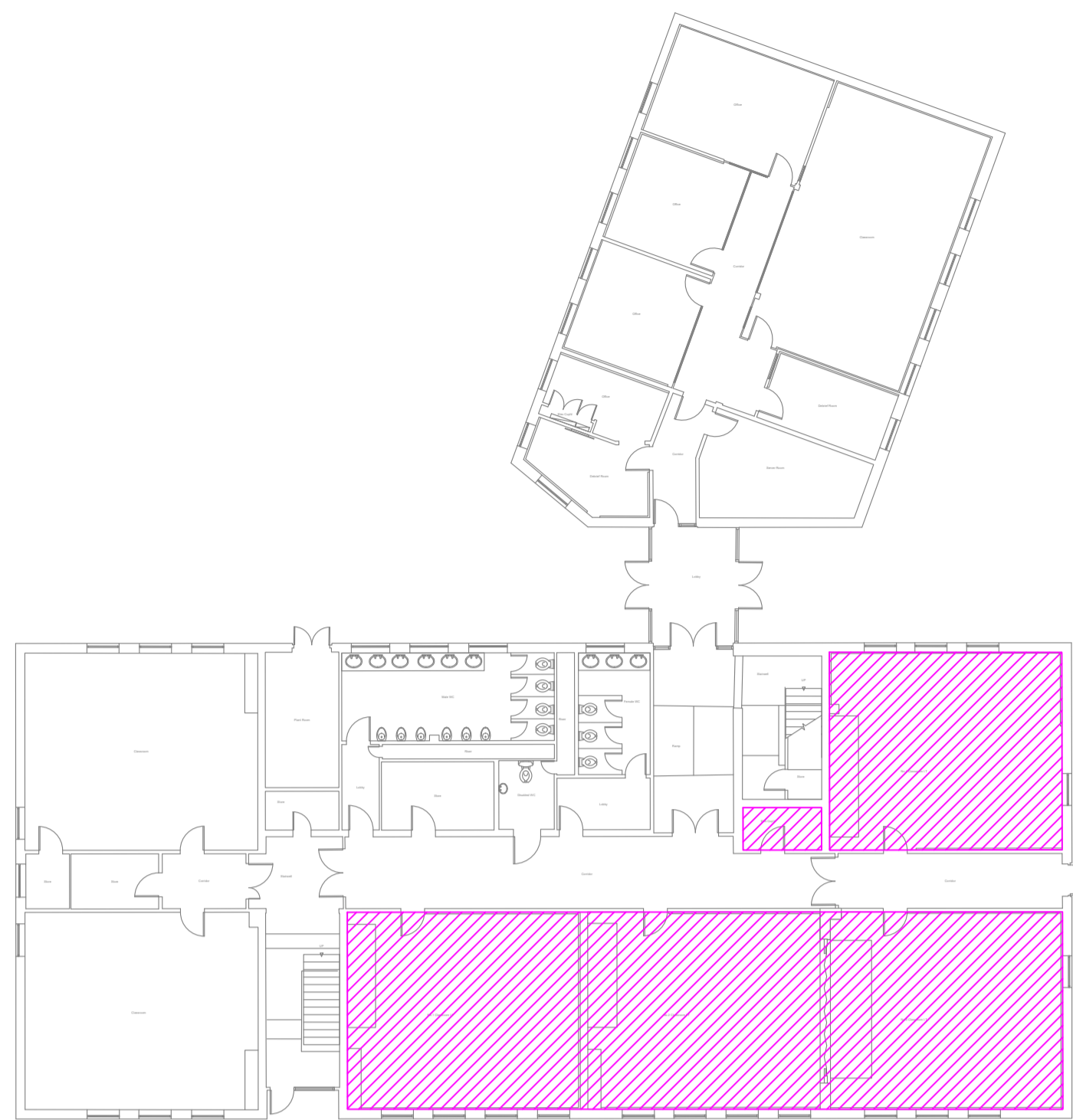
Drawing Title  
**Tamworth Ground Floor Lighting & Emergency Lighting Layout**

Drawing No. **NTBS4279-GLE-TA-GF-DR-E-3000**

Scale **1:50** Original Sheet Size **A1**

Drawing Status	
Tender	
Drawn DRR	Checked AN
Date Oct 2024	Rev. T01

**Gleeds Building Surveying**  
T: +44 (0)115 977 8000  
gleeds.com



GROUND FLOOR - HATCHING DENOTES AREA OF WORKS  
SCALE: 1-200 @ A1

LIGHTING SCHEDULE		
CIRCUIT NO.	DESCRIPTION	WAY REF
C1	NO 1 CLASSROOM - IT - ROW NO.1	TBC BY CONTRACTOR
C2	NO 1 CLASSROOM - IT - ROW NO.2	TBC BY CONTRACTOR
C3	NO 1 CLASSROOM - IT - ROW NO.3	TBC BY CONTRACTOR
C4	NO 2 CLASSROOM - IT - ROW NO.1	TBC BY CONTRACTOR
C5	NO 2 CLASSROOM - IT - ROW NO.2	TBC BY CONTRACTOR
C6	NO 2 CLASSROOM - IT - ROW NO.3	TBC BY CONTRACTOR
C7	NO 3 CLASSROOM - IT - ROW NO.1	TBC BY CONTRACTOR
C8	NO 3 CLASSROOM - IT - ROW NO.2	TBC BY CONTRACTOR
C9	NO 3 CLASSROOM - IT - ROW NO.3	TBC BY CONTRACTOR
C10	NO 4 CLASSROOM - IT - ROW NO.1	TBC BY CONTRACTOR
C11	NO 4 CLASSROOM - IT - ROW NO.2	TBC BY CONTRACTOR
C12	NO 4 CLASSROOM - IT - ROW NO.3	TBC BY CONTRACTOR

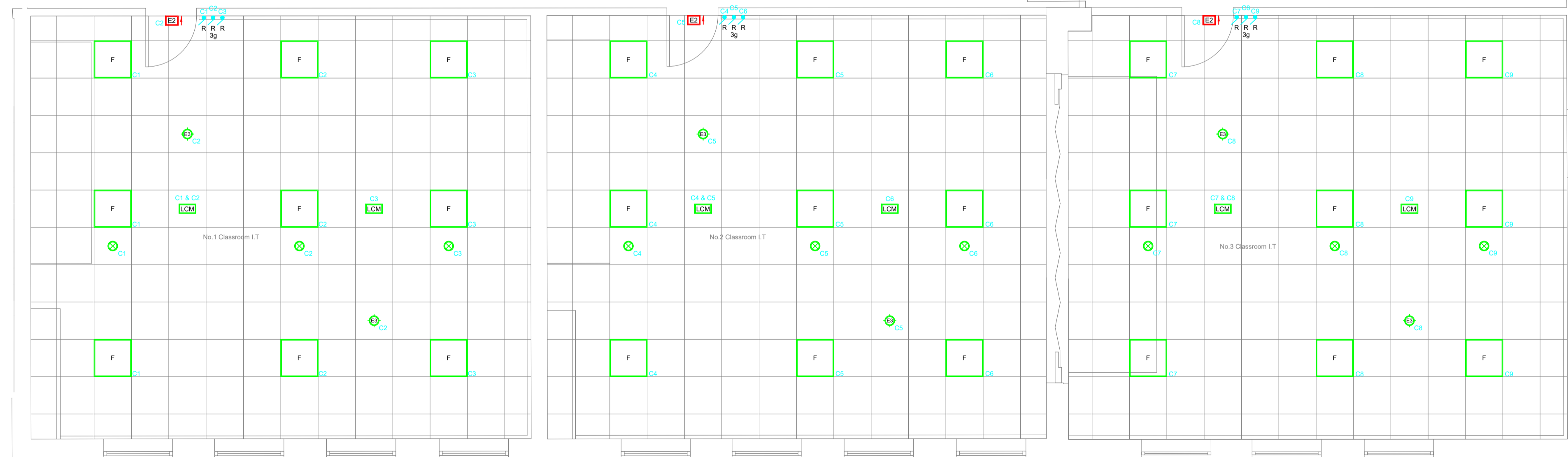
NOTE: THE DRAWINGS AND LOCATIONS OF THE LIGHTING, EMERGENCY LIGHTING AND LIGHTING CONTROLS ARE INDICATIVE. IT REMAINS THE ELECTRICAL CONTRACTORS RESPONSIBILITY TO ENSURE THE LIGHTING DESIGN MEETS THE MINIMAL REQUIREMENTS OF THE SOCIETY OF LIGHT AND LIGHTING (SLL) AND CIBSE GUIDES IN PARTICULAR LG7 LIGHTING GUIDE FOR OFFICES

LIGHTING CONTROL MODULE "LCM" SHALL BE SELECTED AND SIZED SUITABLY TO ENERGISE ALL THE LUMINAIRE/CONTROLS AS IDENTIFIED/REQUIRED

ANY EXISTING FINAL CIRCUITS BEING RETAINED, SUCH AS THE EXTERNAL LIGHTING, SHALL BE LEFT IN SITU. THE ELECTRICAL CONTRACTOR SHALL ALLOW TO VERIFY, TEST AND UPDATE THE ELECTRICAL NIC/EIC CERTIFICATE AND DB SCHEDULE

THE ELECTRICAL CONTRACTOR SHALL DERIVE ALL THE FINAL LIGHTING CIRCUITS FROM THE EXISTING DISTRIBUTION BOARDS DB/B & DB/C LOCATED WITHIN THE PLANT ROOM

THE ELECTRICAL CONTRACTOR SHALL ASSESS, INSPECT AND TEST THE EXISTING DISTRIBUTION BOARD AND INFRASTRUCTURE AS TO ITS SUITABILITY TO BE RETAINED AND RE-USED. SHOULD THE EXISTING DISTRIBUTION BOARD AND INFRASTRUCTURE BE DEEMED UNSUITABLE, A PROVISIONAL SUM OF £5,000.00 HAS BEEN ALLOWED FOR WITHIN THE TENDER SUMMARY TO REPLACE



GROUND FLOOR  
SCALE: 1-50 @ A1

