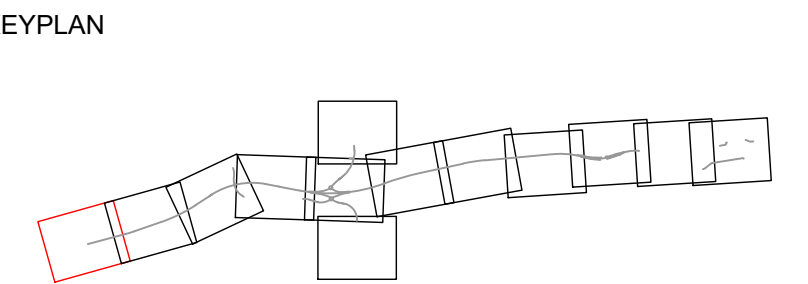


- NOTES:
1. DENOTES MAGNETOMETER MIDAS DETECTOR.
  2. ELECTRICAL INTERFACES (EI) LOCATIONS ARE BASED ON THE PCF PRODUCT "APPLICATION FOR ROADSIDE ELECTRICITY CONNECTIONS (EXIT POINTS)". THESE LOCATIONS ARE SUBJECT TO WAYLEAVE AND DNO CAPACITY CONSTRAINTS AND MAY BE SUBJECT TO CHANGE.
  3. NRTS COMMUNICATIONS TRANSMISSION DESIGN TO BE CONDUCTED BY NRTS Co. THE POSITION AND CONFIGURATION OF THE TRANSMISSION CABINETS AT THE SCHEME EXTENTS ARE INDICATIVE.
  4. ERT WIRING TO BE INSTALLED BY NRTS Co.
  5. FTMS SITES ON APPROACH ROADS TO BE CONNECTED USING NRTS Co. 4G WIRELESS SERVICES.
  6. THE DUCT ROUTES SHOWN SHALL BE PROVIDED FOR THE INSTALLATION OF NRTS Co. LONGITUDINAL AND LOCAL FIBRE OPTIC CABLES TO ENABLE THE NRTS Co. ACCESS SWITCHES IN THE 600C CABINETS. WITH THE EXCEPTION OF ERT CIRCUITS, ALL LOCAL CABLES FROM THE NRTS NODES TO THE END DEVICES SHALL BE PROVIDED BY THE CONTRACTOR. AS THE SERVICE DELIVERY POINT FOR ERTS IS WITHIN THE TELEPHONE HOUSING, THESE DEVICES SHALL BE CONNECTED DIRECTLY BY NRTS Co.
  7. ITPD 1.2.2:

LOCATIONS	PROVISION FOR EA	MAINTENANCE HARDSTANDING
CH 1300 (EB & WB)	WIDENED VERGES	ADJACENT HARDSTANDING FOR ITS SITE
CH 2600 (EB & WB)	LAYBYS INCLUDES AS PART OF THE DESIGN	NO
CH 3600 (EB & WB)	WIDENED VERGES EAST OF B3083 UB	ADJACENT HARDSTANDING FOR ITS SITE
CH 4300/4400 (EB & WB)	WIDENED VERGES EAST OF RIVER TILL VIADUCT	ADJACENT HARDSTANDING FOR ITS SITE
CH 5750 (EB & WB)	WIDENED VERGES EAST OF GB3	ADJACENT HARDSTANDING FOR ITS SITE
CH 7100 (EB & WB)	RETAINED CUT WEST OF TUNNEL	PLACES OF RELATIVE SAFETY
CH 10500 (EB & WB)	RETAINED CUT EAST OF TUNNEL	PLACES OF RELATIVE SAFETY
CH 11000/10950 (EB & WB)	WIDENED VERGES WEST OF COUNTRESS SLIPS	NO



P01	18/12/20	FOR QUALITY SUBMISSION	SB	RC	RC	DS
P02	24/03/21	DESIGN FOR PRICING	SB	RC	MC	MC
P03	08/04/21	FOR QUALITY SUBMISSION	SY	RC	DS	DS
P04	17/05/21	FOR QUALITY SUBMISSION	SB	RC	DS	DS
P05	10/06/21	FOR QUALITY SUBMISSION	SB	RC	DS	DS
Rev	Rev. Date	Purpose of revision	Drawn	Checked	Rev'd	Appr'd



Client

**highways**  
england

Project

A303  
Amesbury to Berwick Down

Drawing title

**MOTORWAY COMMUNICATIONS  
GEOGRAPHIC LAYOUTS**

SHEET 1 OF 13

Drawing status

S4 - Suitable for Stage Approval

State Code	Preliminary	DO NOT SCALE
Project Stage	PCF Stage 5	
Scale	1:2500	Rev
Jacobs No.	HE551506	P05
Client no.	HE551506	

Drawing number

HE551506 - BGR - HOS-  
SWGN000Z

Originator

PIN

Volume

-DR-TE-0001

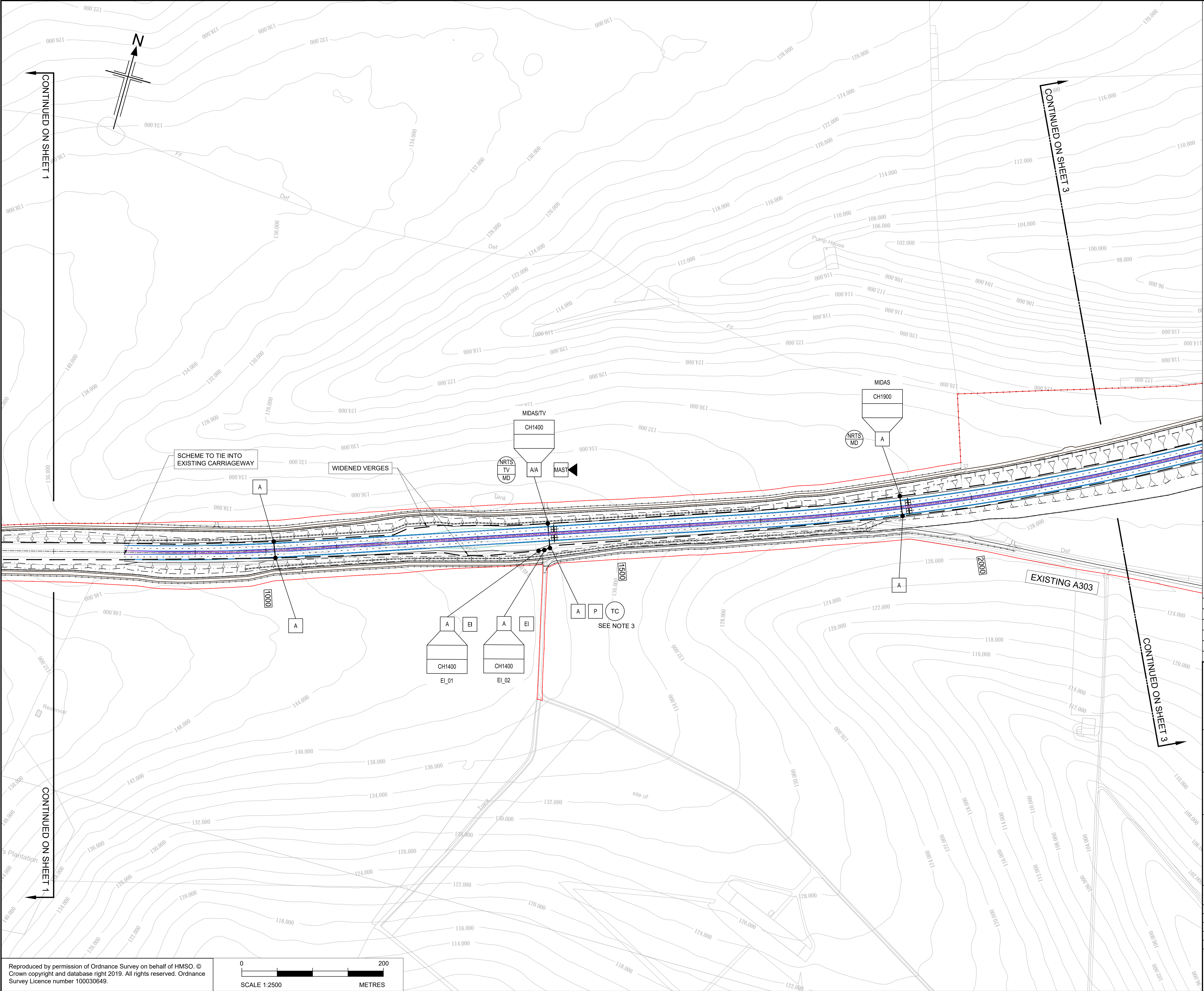
Location

Type | Role | Number

Reproduced by permission of Ordnance Survey on behalf of HMSO. © Crown copyright and database right 2019. All rights reserved. Ordnance Survey Licence number 100030649.

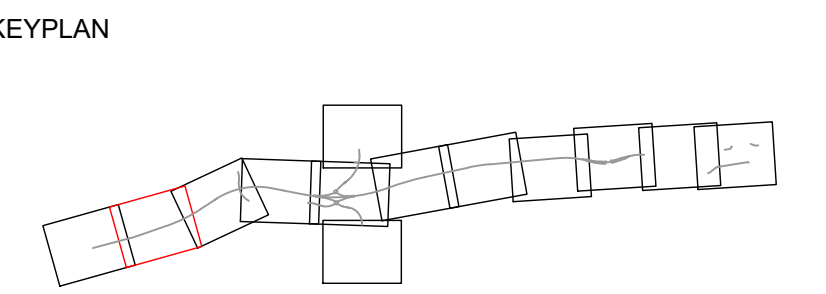
0 200  
SCALE 1:2500 METRES





- NOTES:
1. DENOTES MAGNETOMETER MIDAS DETECTOR.
  2. ELECTRICAL INTERFACES (EI) LOCATIONS ARE BASED ON THE PCF PRODUCT "APPLICATION FOR ROADSIDE ELECTRICITY CONNECTIONS (EXIT POINTS)". THESE LOCATIONS ARE SUBJECT TO WAYLEAVE AND DNO CAPACITY CONSTRAINTS AND MAY BE SUBJECT TO CHANGE.
  3. NRTS COMMUNICATIONS TRANSMISSION DESIGN TO BE CONDUCTED BY NRTS Co. THE POSITION AND CONFIGURATION OF THE TRANSMISSION CABINETS AT THE SCHEME EXTENTS ARE INDICATIVE.
  4. ERT WIRING TO BE INSTALLED BY NRTS Co.
  5. FTMS SITES ON APPROACH ROADS TO BE CONNECTED USING NRTS Co. 4G WIRELESS SERVICES.
  6. THE DUCT ROUTES SHOWN SHALL BE PROVIDED FOR THE INSTALLATION OF NRTS Co. LONGITUDINAL AND LOCAL FIBRE OPTIC CABLES TO ENABLE THE NRTS Co. ACCESS SWITCHES IN THE 600C CABINETS. WITH THE EXCEPTION OF ERT CIRCUITS, ALL LOCAL CABLES FROM THE NRTS NODES TO THE END DEVICES SHALL BE PROVIDED BY THE CONTRACTOR. AS THE SERVICE DELIVERY POINT FOR ERTS IS WITHIN THE TELEPHONE HOUSING, THESE DEVICES SHALL BE CONNECTED DIRECTLY BY NRTS Co.
  7. ITPD 1.2.2:

LOCATIONS	PROVISION FOR EA	MAINTENANCE HARDSTANDING
CH 1900 (EB & WB)	WIDENED VERGES	ADJACENT HARDSTANDING FOR ITS SITE
CH 2600 (EB & WB)	LAYBYS INCLUDES AS PART OF THE DESIGN	NO
CH 3600 (EB & WB)	WIDENED VERGES EAST OF B3083 UB	ADJACENT HARDSTANDING FOR ITS SITE
CH 4300/4400 (EB & WB)	WIDENED VERGES EAST OF RIVER TILL VIADUCT	ADJACENT HARDSTANDING FOR ITS SITE
CH 5750 (EB & WB)	WIDENED VERGES EAST OF GB3	ADJACENT HARDSTANDING FOR ITS SITE
CH 7100 (EB & WB)	RETAINED CUT WEST OF TUNNEL	PLACES OF RELATIVE SAFETY
CH 10500 (EB & WB)	RETAINED CUT EAST OF TUNNEL	PLACES OF RELATIVE SAFETY
CH 11000/10950 (EB & WB)	WIDENED VERGES WEST OF COUNTRESS SLIPS	NO



P02	15/02/21	FOR QUALITY SUBMISSION	SB	RC	MC	MC
P03	24/03/21	DESIGN FOR PRICING	SB	RC	MC	MC
P04	08/04/21	FOR QUALITY SUBMISSION	SY	RC	DS	DS
P05	17/05/21	FOR QUALITY SUBMISSION	SB	RC	DS	DS
P06	10/06/21	FOR QUALITY SUBMISSION	SB	RC	DS	DS
Rev	Rev. Date	Purpose of revision	Drawn	Checked	Rev'd	Appr'd

Client

Project

A303  
Amesbury to Berwick Down

Drawing title

MOTORWAY COMMUNICATIONS  
GEOGRAPHIC LAYOUTS

SHEET 2 OF 13

Drawing status

S4 - Suitable for Stage Approval

State Code

Preliminary

Project Stage

PCF Stage 5

Scale

1:2500

Jacobs No.

HE551506

Client no.

HE551506

Drawing number

PN

Originator

BGR

Volume

HOS-

Location

SWGN000Z

Type

DR-TE

Role

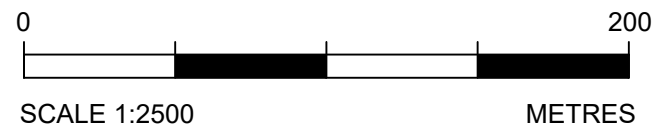
Number

0002

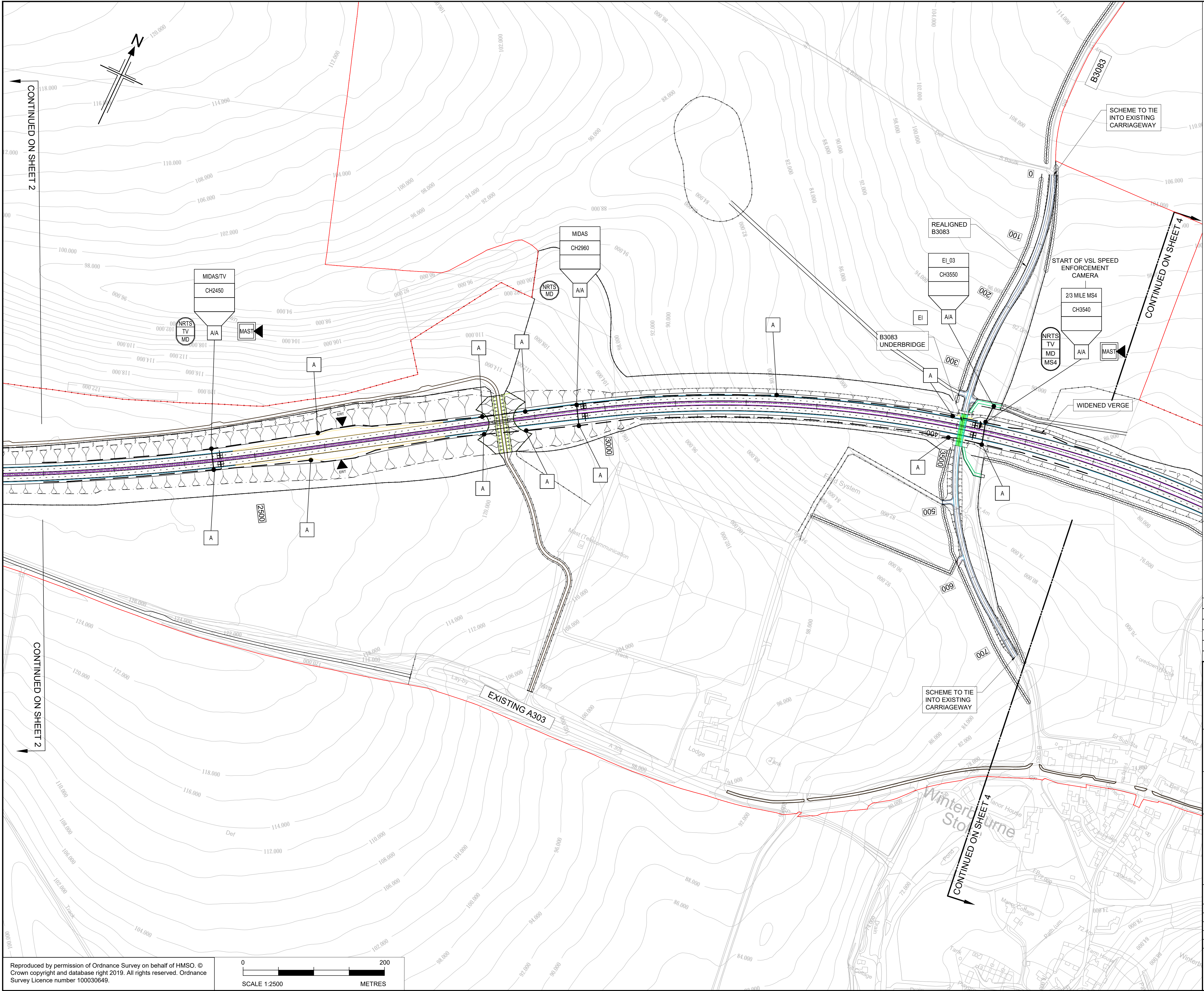
DO NOT SCALE

Rev

P06

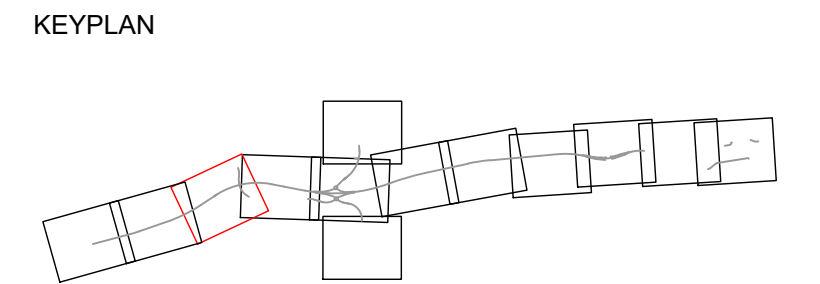






- NOTES:
1. DENOTES MAGNETOMETER MIDAS DETECTOR.
  2. ELECTRICAL INTERFACES (EI) LOCATIONS ARE BASED ON THE PCF PRODUCT "APPLICATION FOR ROADSIDE ELECTRICITY CONNECTIONS (EXIT POINTS)". THESE LOCATIONS ARE SUBJECT TO WAYLEAVE AND DNO CAPACITY CONSTRAINTS AND MAY BE SUBJECT TO CHANGE.
  3. NRTS COMMUNICATIONS TRANSMISSION DESIGN TO BE CONDUCTED BY NRTS Co. THE POSITION AND CONFIGURATION OF THE TRANSMISSION CABINETS AT THE SCHEME EXTENTS ARE INDICATIVE.
  4. ERT WIRING TO BE INSTALLED BY NRTS Co.
  5. FTMS SITES ON APPROACH ROADS TO BE CONNECTED USING NRTS Co. 4G WIRELESS SERVICES.
  6. YELLOW / ORANGE HIGHLIGHT INDICATES EMERGENCY REFUGE AREAS.
  7. MS4's WILL ALSO BE USED TO SUPPORT TRAFFIC MANAGEMENT OPERATIONS.
  8. THE DUCT ROUTES SHOWN SHALL BE PROVIDED FOR THE INSTALLATION OF NRTS Co. LONGITUDINAL AND LOCAL FIBRE OPTIC CABLES TO ENABLE THE NRTS Co. ACCESS SWITCHES IN THE 600C CABINETS. WITH THE EXCEPTION OF ERT CIRCUITS, ALL LOCAL CABLES FROM THE NRTS NODES TO THE END DEVICES SHALL BE PROVIDED BY THE CONTRACTOR. AS THE SERVICE DELIVERY POINT FOR ERTS IS WITHIN THE TELEPHONE HOUSING, THESE DEVICES SHALL BE CONNECTED DIRECTLY BY NRTS Co.
  9. ITPD 1.2.2:

LOCATIONS	PROVISION FOR EA	MAINTENANCE HARDSTANDING
CH 1300 (EB & WB)	WIDENED VERGES	ADJACENT HARDSTANDING FOR ITS SITE
CH 2600 (EB & WB)	LAYBYS INCLUDES AS PART OF THE DESIGN	NO
CH 3600 (EB & WB)	WIDENED VERGES EAST OF B3083 UB	ADJACENT HARDSTANDING FOR ITS SITE
CH 4300/4400 (EB & WB)	WIDENED VERGES EAST OF RIVER TILL VIADUCT	ADJACENT HARDSTANDING FOR ITS SITE
CH 5750 (EB & WB)	WIDENED VERGES EAST OF GB3	ADJACENT HARDSTANDING FOR ITS SITE
CH 7100 (EB & WB)	RETAINED CUT WEST OF TUNNEL	PLACES OF RELATIVE SAFETY
CH 10500 (EB & WB)	RETAINED CUT EAST OF TUNNEL	PLACES OF RELATIVE SAFETY
CH 11000/10950 (EB & WB)	WIDENED VERGES WEST OF COUNTLESS SLIPS	NO



P03	24/03/21	DESIGN FOR PRICING	SB	RC	MC	MC
P04	08/04/21	FOR QUALITY SUBMISSION	SY	RC	DS	DS
P05	16/04/21	FOR QUALITY SUBMISSION	SB	RC	DS	DS
P06	17/05/21	FOR QUALITY SUBMISSION	SB	RC	DS	DS
P07	10/06/21	FOR QUALITY SUBMISSION	SB	RC	DS	DS
Rev	Rev. Date	Purpose of revision	Drawn	Checked	Rev'd	Appr'd



Client  
**highways england**

Project  
A303  
Amesbury to Berwick Down

Drawing title  
**MOTORWAY COMMUNICATIONS GEOGRAPHIC LAYOUTS**

**SHEET 3 OF 13**

Drawing status  
S4 - Suitable for Stage Approval

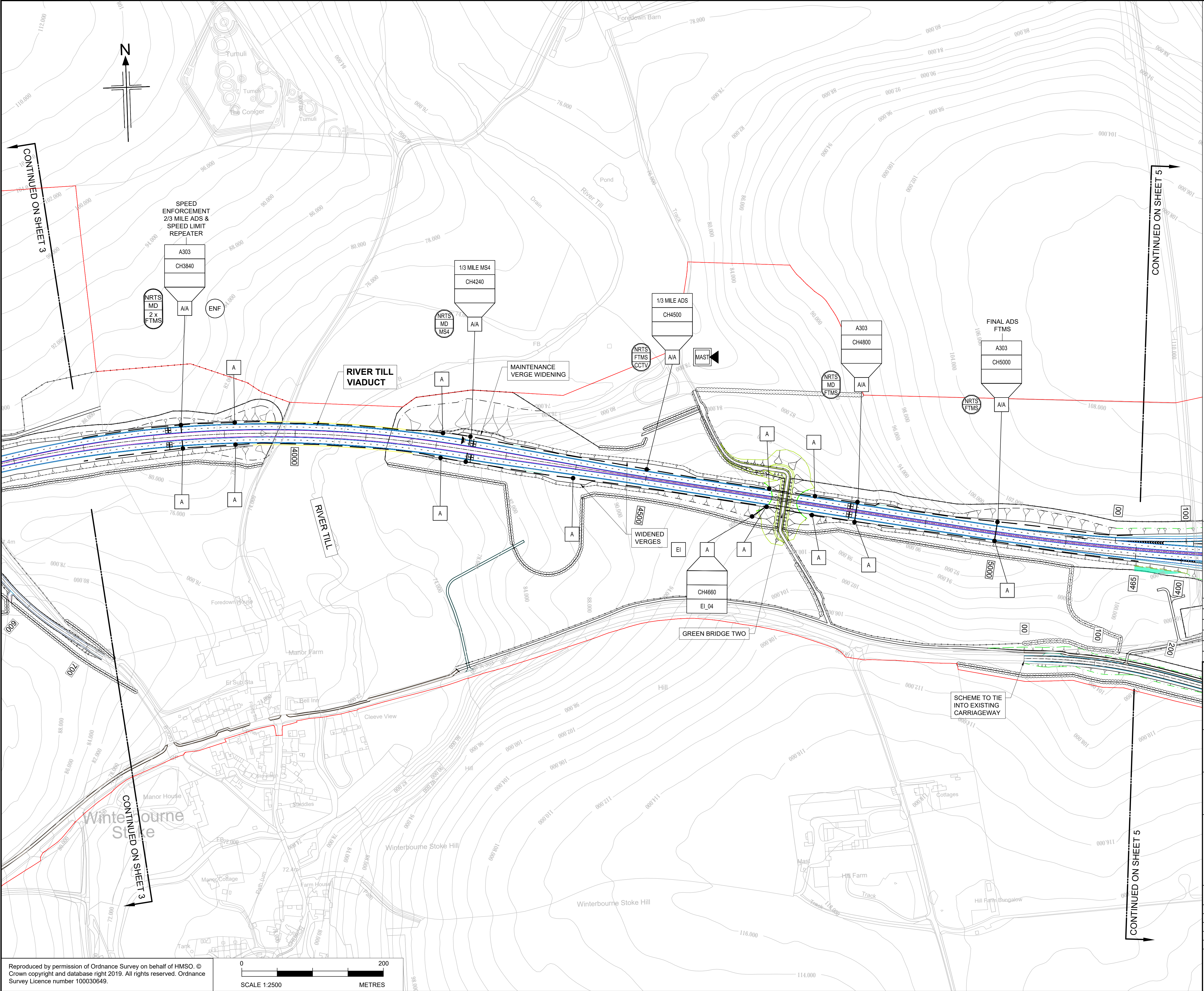
State Code	Preliminary	DO NOT SCALE
Project Stage	PCF Stage 5	
Scale	1:2500	
Jacobs No.	HE551506	Rev P07
Client no.	HE551506	

Drawing number  
**HE551506 - BGR - HOS-**

Location  
**SWGN000Z**

Volume  
**-DR-TE-0003**

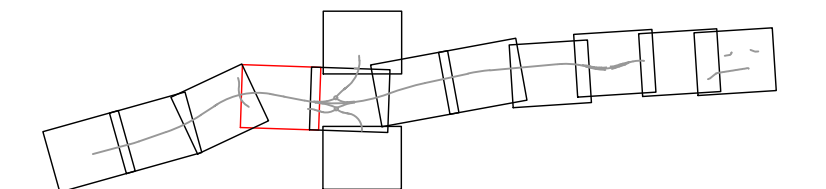




- NOTES:
1. DENOTES MAGNETOMETER MIDAS DETECTOR.
  2. ELECTRICAL INTERFACES (EI) LOCATIONS ARE BASED ON THE PCF PRODUCT 'APPLICATION FOR ROADSIDE ELECTRICITY CONNECTIONS (EXIT POINTS)'. THESE LOCATIONS ARE SUBJECT TO WAYLEAVE AND DNO CAPACITY CONSTRAINTS AND MAY BE SUBJECT TO CHANGE.
  3. NRTS COMMUNICATIONS TRANSMISSION DESIGN TO BE CONDUCTED BY NRTS Co. THE POSITION AND CONFIGURATION OF THE TRANSMISSION CABINETS AT THE SCHEME EXTENTS ARE INDICATIVE.
  4. ERT WIRING TO BE INSTALLED BY NRTS Co.
  5. FTMS SITES ON APPROACH ROADS TO BE CONNECTED USING NRTS Co. 4G WIRELESS SERVICES.
  6. THE DUCT ROUTES SHOWN SHALL BE PROVIDED FOR THE INSTALLATION OF NRTS Co. LONGITUDINAL AND LOCAL FIBRE OPTIC CABLES TO ENABLE THE NRTS Co. ACCESS SWITCHES IN THE 600C CABINETS. WITH THE EXCEPTION OF ERT CIRCUITS, ALL LOCAL CABLES FROM THE NRTS NODES TO THE END DEVICES SHALL BE PROVIDED BY THE CONTRACTOR. AS THE SERVICE DELIVERY POINT FOR ERTS IS WITHIN THE TELEPHONE HOUSING, THESE DEVICES SHALL BE CONNECTED DIRECTLY BY NRTS Co.
  7. ITPD 1.2.2:

LOCATIONS	PROVISION FOR EA	MAINTENANCE HARDSTANDING
CH 1300 (EB & WB)	WIDENED VERGES	ADJACENT HARDSTANDING FOR ITS SITE
CH 2600 (EB & WB)	LAYBYS INCLUDES AS PART OF THE DESIGN	NO
CH 3600 (EB & WB)	WIDENED VERGES EAST OF B3083 UB	ADJACENT HARDSTANDING FOR ITS SITE
CH 4300/4400 (EB & WB)	WIDENED VERGES EAST OF RIVER TILL VIADUCT	ADJACENT HARDSTANDING FOR ITS SITE
CH 5750 (EB & WB)	WIDENED VERGES EAST OF GB3	ADJACENT HARDSTANDING FOR ITS SITE
CH 7100 (EB & WB)	RETAINED CUT WEST OF TUNNEL	PLACES OF RELATIVE SAFETY
CH 10500 (EB & WB)	RETAINED CUT EAST OF TUNNEL	PLACES OF RELATIVE SAFETY
CH 11000/10950 (EB & WB)	WIDENED VERGES WEST OF COUNTLESS SLIPS	NO

KEYPLAN



P02	15/02/21	FOR QUALITY SUBMISSION	SB	RC	MC	MC
P03	24/03/21	DESIGN FOR PRICING	SB	RC	MC	MC
P04	08/04/21	FOR QUALITY SUBMISSION	SY	RC	DS	DS
P05	17/05/21	FOR QUALITY SUBMISSION	SB	RC	DS	DS
P06	10/06/21	FOR QUALITY SUBMISSION	SB	RC	DS	DS
Rev	Rev. Date	Purpose of revision	Drawn	Checked	Rev'd	Appr'd



Client  
**highways  
england**

Project  
A303  
Amesbury to Berwick Down

Drawing title  
**MOTORWAY COMMUNICATIONS  
GEOGRAPHIC LAYOUTS**

SHEET 4 OF 13

Drawing status  
S4 - Suitable for Stage Approval

State Code	Preliminary	DO NOT SCALE
Project Stage	PCF Stage 5	
Scale	1:2500	Rev
Jacobs No.	HE551506	P06
Client no.	HE551506	

Drawing number  
HE551506 - BGR - HOS-  
SWGN000Z

Originator  
-DR-TE-0004

Volume  
Type | Role | Number

