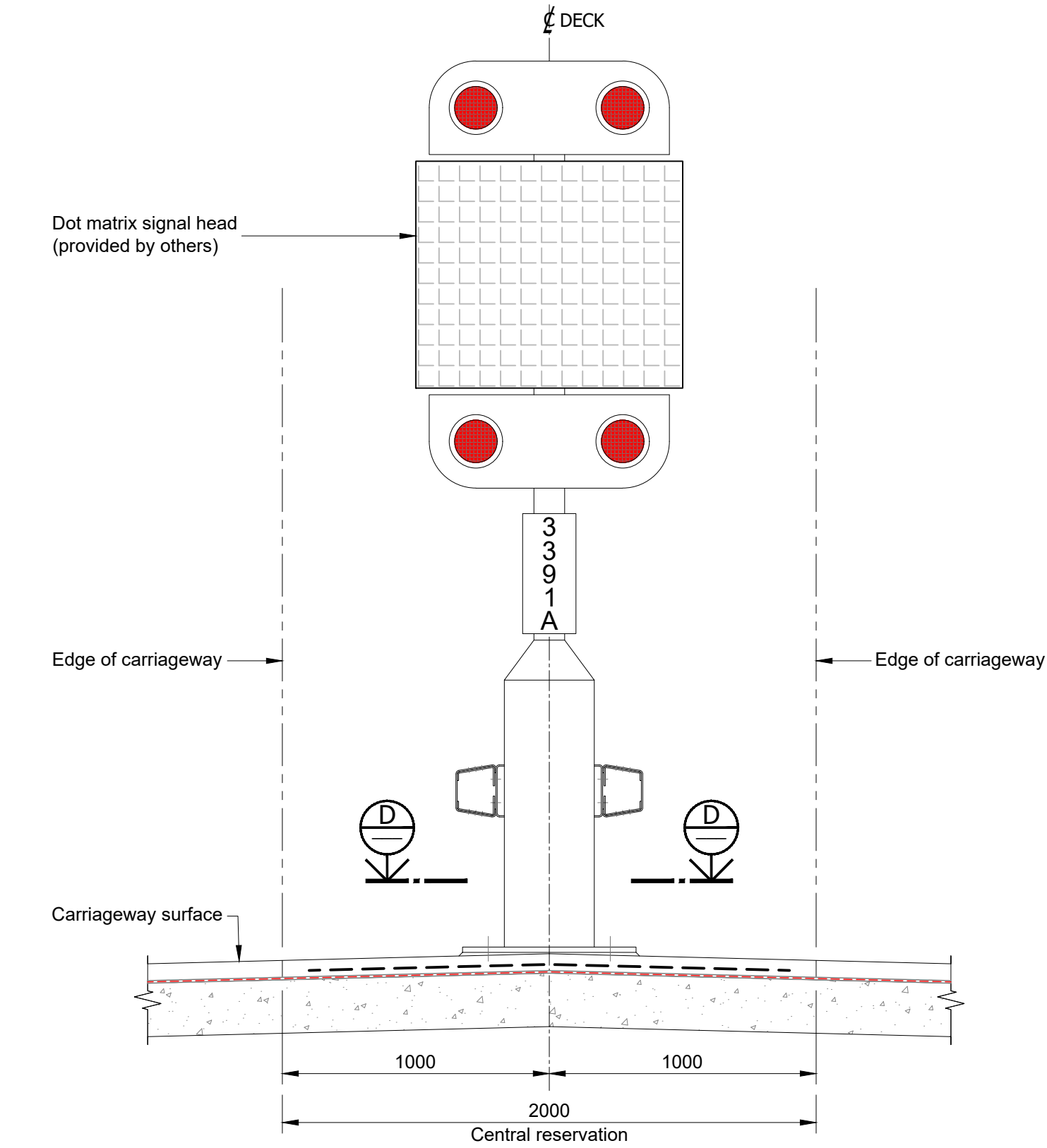
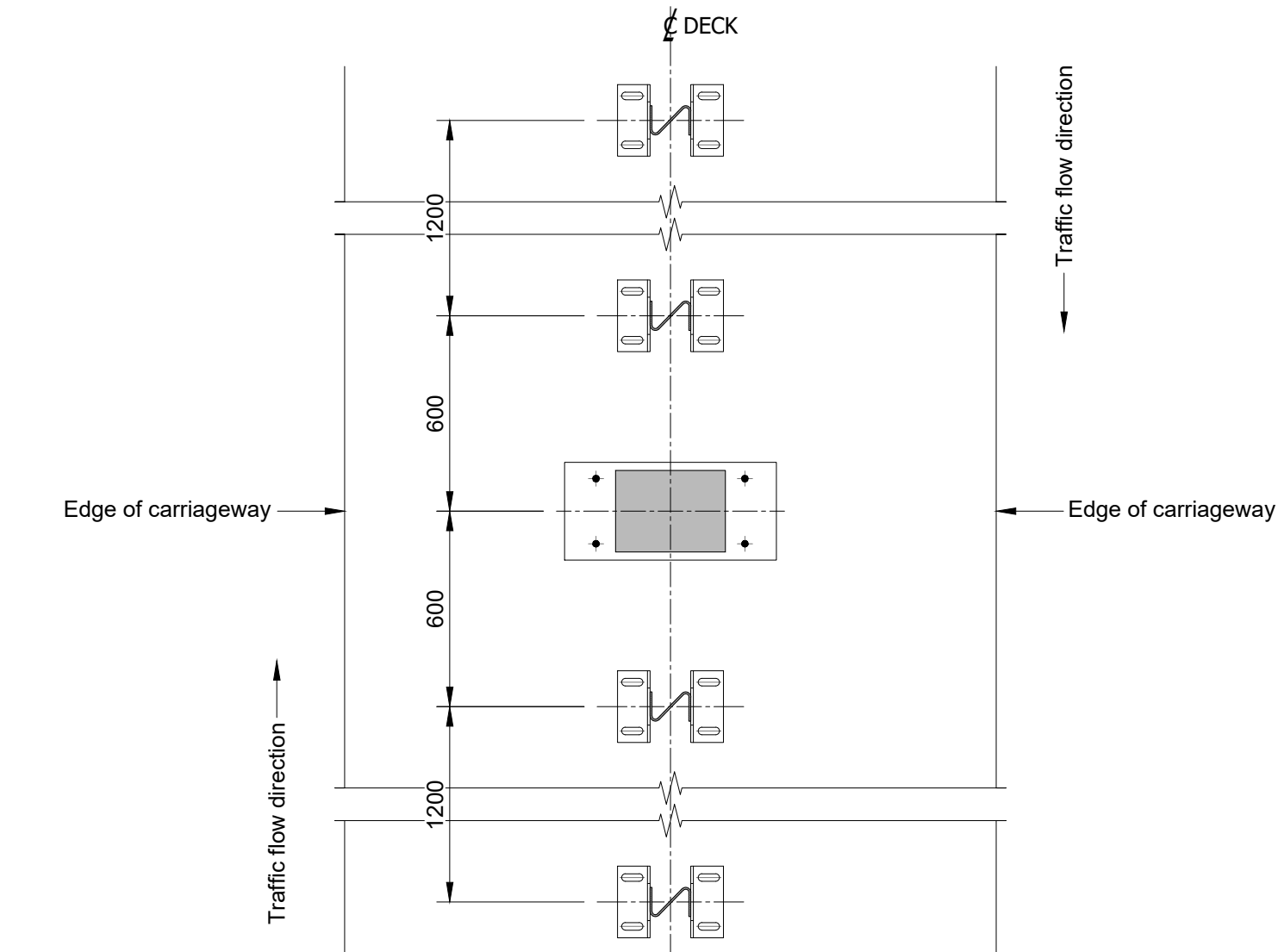
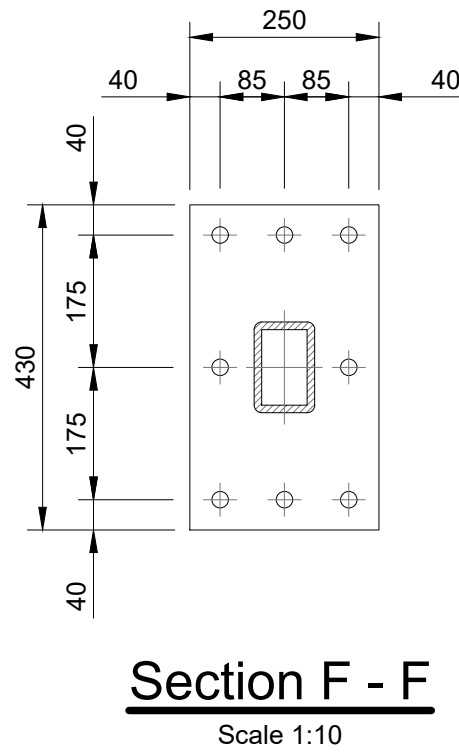
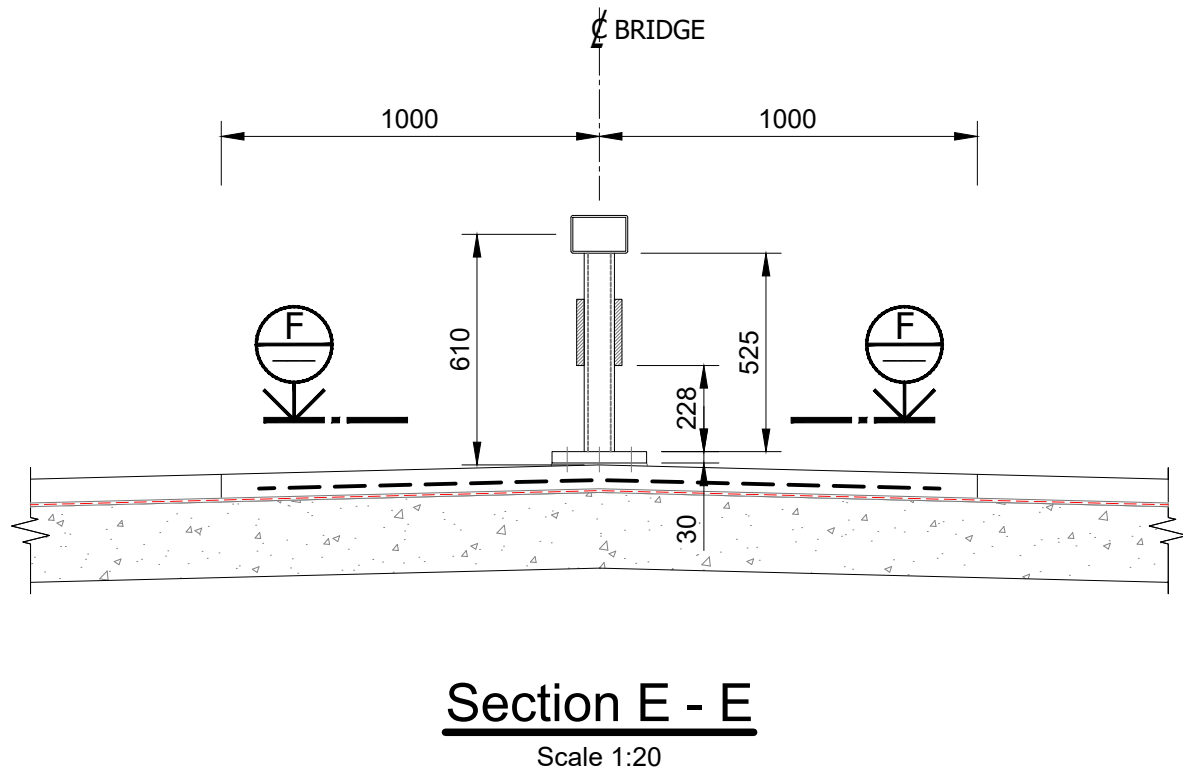
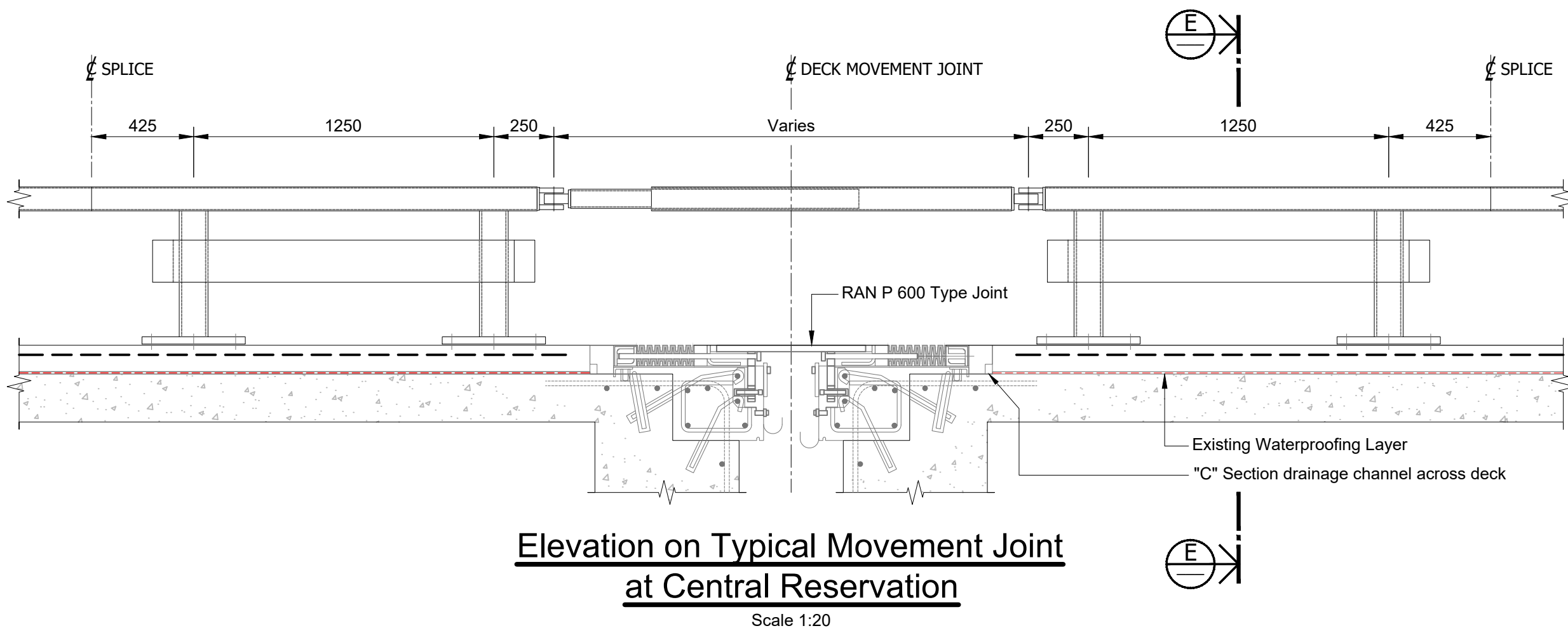


Shoots Bridge Central Reserve Typical Detail



Elevation on Dot Matrix Signal Post



Section D - D
(Showing OBB fence 'Z' post positions)

NOTES

1. Do not scale from this drawing.
2. All dimensions are in millimeters unless otherwise stated.
3. This drawing is to be read in conjunction with the all drawings in the SBIM-POW-TO824 Series
4. Dimensions are taken from record drawings and have not been confirmed by measurement.

KEY:

RESIDUAL DESIGN HAZARDS

(The following information has been collected from Preconstruction Information and the Amey CDM Hazard Management Process).
Residual Design Hazards:
HS-01 - Striking existing utilities
HS-02 - Temporary instability of bridge as a result of concrete removal
HS-03 - Risk of Injury from protruding reinforcement
HS-04 - RA1 Procedure limitations
HS-05 - Reduction in deck thickness due to hydro demolition
HS-06 - Depth of deck when breaking out concrete
HS-07 - Trafficking of the deck following treatment

| | | | | | |
|-----------|------------------|-------|------------|------|----------|
| P01 | For Tender | AD | TB | LG | 12.04.24 |
| Rev | Revision details | Drwn | Chkd | Appd | Date |
| Designed: | Amey | Date: | 12.04.2024 | | |
| Drawn: | Alex Davey | Date: | 12.04.2024 | | |
| Checked: | Tom Bolton | Date: | 12.04.2024 | | |
| Approved: | Laurence Green | Date: | 12.04.2024 | | |

Copyright in this design © Amey

Amey

www.amey.co.uk

Client
national highways

Project Name
M4 Prince of Wales Bridge
Resurfacing Strategy

Drawing Title
Prince of Wales Bridge
Miscellaneous Details - Sheet 2 of 2

| | |
|----------------------------|------------------|
| Original Drawing Size : A1 | Scale : As Shown |
| Dimensions : Millimetres | |

| | |
|------------------------------|-------------------|
| Drawing Status For Tender | Suitability S2 |
|------------------------------|-------------------|

| | |
|---------------------------------------|------------|
| Drawing No SBIM-POW-TO824-DWG-0004 | Rev P01 |
|---------------------------------------|------------|