



the **play inspection** company

Annual Inspection

Houghton Regis Town Council

Tithe Farm Recreation Ground

Tithe Farm Road, Houghton Regis, Dunstable, LU5 5JD



API Associate

Unit 5, Glenmore Business Park, Blackhill Road, Poole, Dorset, BH16 6NL
t- 01202 590675 e- info@playinspections.co.uk

[www. playinspections .co.uk](http://www.playinspections.co.uk)



Inspection Scope for RPII Inspection Methodology

This document outlines the RPII scope for inspections undertaken by the Inspectors listed as Annual Inspectors on the RPII Register of Inspectors when undertaking Indoor Annual, Outdoor Annual, Outdoor Operational and Outdoor Routine inspections.

Inspections are undertaken with reference to the standards listed in this preamble only; where no date for the standard is given it will be the standard that is current at the time of inspection except where overlap periods are granted by the standards committee when standards are updated. The information contained in reports is provided to assist the owner/operator in fulfilling their responsibilities as detailed in the relevant standard. Other standards referenced within the listed standards do not form part of the inspection, unless they are also explicitly listed here.

The following standards are relevant to all installations of equipment that are publicly accessible to users; this includes public parks, pay and play parks, schools, nurseries, public houses, holiday parks, indoor play centres, farm parks etc. All equipment used or employed in publicly accessible areas should meet with the requirements of the relevant standards (listed below):

BS EN 1176 Parts 1, 2, 3, 4, 5, 6, 10 & 11 Playground equipment intended for permanent installation outdoors & indoors.

BS EN 1176 Part 7 - 'Guidance on Installation, Inspection, Maintenance and Operation' (this document gives guidance to the owners/operators of the facility on the installation, inspection, maintenance and operation of playground equipment, excluding ancillary items).

In the United Kingdom the National Foreword forms an important part to the understanding and implementation of the recommendations set out in this document. It clarifies the application of the document within the UK as best practice guidance, as the document has been used since its initial publication. Therefore, in the UK this standard (BS EN 1176 – Part 7) contains no requirements and needs to be read and implemented as guidance, with the use of the term 'shall' therefore becoming a recommendation, as in the term 'should'.

Domestic play equipment falls outside of the scope of BS EN 1176 and has its own standards (BS EN 71 series – Safety of Toys). Where domestic equipment can be identified this will be acknowledged in the report but any comments concerning compliance will follow the requirements and recommendations of BS EN 1176.

When water play items, including spray parks, are inspected any comments concerning compliance within the inspection will refer to BS EN 1176. We have not assessed these against the requirements of BS EN 17232 (Water play equipment and features).

Other equipment that is not clearly identified as unsupervised or domestic (natural play, self-build equipment etc.) will be assessed for compliance with the relevant standard listed below:

BS EN 15312 Free access multi-sports equipment
BS EN 14974 Skateparks
BS EN 16630 Permanently installed outdoor fitness equipment
BS EN 16899 Parkour equipment (plus RPII/API guidance notes)

Annual and Post Installation inspections will take into consideration compliance with these current standards, and defects related to wear and vandalism. Items not listed in the report have not been included in the inspection. The inspection will cover the playground equipment and the active area (that area which is obviously part of the playground), nominally up to three metres around, the fence line if closer, or other areas as agreed.

Operational inspections only take into consideration defects related to cleanliness, equipment ground clearances, ground surface finishes, exposed foundations, sharp edges, missing parts, excessive wear (of moving parts) structural integrity, wear and vandalism.

Routine visual inspections relate only to the most obvious defects such as broken or missing parts, litter, vandalism and issues created by severe weather conditions (the intention is to identify hazards created by storm damage).

All inspections are non-dismantling, non-destructive and do not include any structural, toxicology or impact assessments defined in the standard; however, the inspector will undertake a manual test for stability and if equipment fails under manual load, or any other hazard is identified as an unacceptable risk, the owner/operator will be notified as soon as practicably possible.

The inspector will access all reasonably accessible equipment and will assess all reasonably accessible parts above the standing surface. Where it is not possible to access parts of the equipment without employing an alternative means of access the report will record the action required by the owner/operator to ensure the continued safe use of the equipment.

Ancillary equipment will be assessed using the inspector's knowledge and experience of the standards named in this document. (Note: Ancillary items are not included in the specific equipment-type parts of the EN 1176 series; hence they are not assessed for compliance with EN 1176 series and are subject to a general safety assessment).

The owner/operator is responsible for the overall safety of the equipment and area.

The inspector will not undertake any of the following works unless specifically agreed in writing at the time of order:

Checking the depth and underlying structural integrity of any surface areas and/or carrying out any testing of the impact attenuating properties of any surfaces; the identification of any corrosion, rot or other deterioration in any apparatus or equipment other than by an external inspection; the inspection of any equipment (or part thereof) that is beneath the playing surface (loose-fill materials may be moved to expose foundations); tightening any bolts, hinges or other fixing devices on any apparatus or equipment; assessing or inspecting any electrical installations contained on any site and/or apparatus and/or equipment; assessing or inspecting any water supplies and/or water features and/or any associated computerised systems (including carrying out any programming); where planting or trees are mentioned in the report no assessments of toxicity, suitability or condition are undertaken – the owner/operator should have suitable inspections provided by a competent person.

The owner/operator should have a 'design risk assessment' provided by the manufacturer/designer of the area for the equipment and location in which the facility is installed.

The operator is responsible for managing risks of their provision and is required by law to carry out a 'suitable and sufficient assessment' of the risks associated with a site or activity. This inspection shall be considered as contributing to the operator's discharge of this responsibility.

The details contained within the report are a snapshot of the condition at the time of inspection only and subsequent events may affect the condition of the facility. Suggested remedial actions are based on the knowledge and experience of the inspector and/or that of the inspection company. The owner/operator should always seek the advice of the manufacturer or a competent person when undertaking repairs and/or modifications to equipment.

A full copy of the Play Inspection Company Ltd. Terms & Conditions is available on our website (www.playinspections.co.uk)

The operator is responsible for following the guidance of the relevant standards. The standards give guidance on the installation, inspection, maintenance and operation of the various types of facilities. The inspection guidance is listed in Table 1, with an indication of which parts will be included in an RPII Annual or Post-Installation Inspection. The relevant standards also contain additional parts which the operator should follow.

Inspection recommendations of relevant standards Refer to relevant standards for full text	Annual Main	RPII Annual/ Post Installation Inspection
6.1 d) Overall levels of safety of equipment (see note 1)	✓	✓ [1]
6.1 d) Overall levels of safety of foundations (see note 1)	✓	✓ [1]
6.1 d) Overall levels of safety of playing surfaces (see note 2)	✓	✓ [2]
6.1 d) Compliance with the relevant parts of the standard and or risk assessment (see note 3)	✓	✓ [3]
6.1 d) Effects of weather	✓	✓
6.1 d) Presence of rot, decay or corrosion (see note 1)	✓	✓ [1]
6.1 d) Assessment of repairs made or added or replaced components (see note 4)	✓	✓ [4]
6.1 d) Excavation or dismantling/additional measures	✓	✗
6.2.1 Assessment of glass reinforced plastics (see note 5)	✓	✓ [5]
6.2.1 Inspection of one post equipment (see note 1)	✓	✓ [1]
6.2.4 Undertaking the Operators inspection protocol	✓	✗

NB: The clause numbers in table 1 are taken from BS EN 1176 - Part 7:2020. The content is equally applicable to all other relevant standards listed herein. Playgrounds contain a range of equipment from different manufacturers and installed over a number of years; operators should implement any guidance provided by the manufacturer. Item specific detail is not readily available to RPII Playground Inspectors, whose report contributes to the operator's overall Annual Main Inspection as detailed in the relevant standards.

[1] A manual test only is undertaken for stability. Wear and instability are only detectable where readily apparent without dismantling or destruction and without the use of tools, excavation or specialist equipment. Rot and corrosion are tested or with a hammer and/or steel rod. Decay in timber may exist which can only be found with specialist equipment.


[2] Only the visible condition and dimensional compliance of surface extent is considered. Neither testing of impact attenuating properties nor measurement of the thickness of bound surfaces are undertaken on RPII annual inspections.

[3] The inspection assesses compliance where this can be tested on site using manual methods without dismantling, destruction and without the use of tools or specialist equipment.

[4] The operator should use manufacturer's recommended parts, or equivalent. We are unable to verify if such parts have been used, and any subsequent change in quality or performance.

[5] Visible glass fibres will be noted in reports. The operator is responsible for repairs or replacement.

Risk Assessment Matrix

			Scores in the report are multiplication factors of Likelihood x Severity					
			Severity>>					
Likelihood	Very High probability, if the situation is not addressed an accident is almost certain.	5	Very High	VL (5)	L (10)	M (15)	H (20)	VH (25)
	High probability an accident is probable without any added factor.	4	High	VL (4)	L (8)	M (12)	H (16)	H (20)
	Moderate probability an incident is foreseeable.	3	Moderate	VL (3)	L (6)	L (9)	M (12)	M (15)
	Some probability, requires a combination of factors to take place.	2	Low	VL (2)	VL (4)	L (6)	L (8)	L (10)
	No significant probability; lightning strike, freak accident.	1	Very Low	VL (1)	VL (2)	VL (3)	VL (4)	VL (5)
				Very Low	Low	Moderate	High	Very High
				1	2	3	4	5
				No injury likely e.g. damaged or soiled clothing, minor bruising, grazes	Minor injury, laceration or bruising requiring first aid only	Injury requiring medical intervention e.g. cuts requiring stitches	Serious injury including concussions or fracture of long bones	Severe injury involving a potential life changing injury or fatality
				Severity>>				
<p>Note 1: The total risk scores included within our reports are a multiplication factor of the calculated Likelihood and Severity of each finding. Both Likelihood and Severity are given a number between 1 - 5 as shown on the matrix above and these two numbers are then multiplied together to give the total risk score that is shown against defects on the report. Total risk scores can be divided in both directions, i.e. a total risk score of 12 could be a Likelihood (3) x Severity (4) or Likelihood (4) x Severity (3).</p> <p>Note 2: When we inspect we only see a snapshot of the current condition of the equipment. It is the operators responsibility to ensure that there is a continuing level of maintenance to keep the equipment in good working order and the site fit for use.</p>								

Equipment has been assessed to the following standards where relevant:

BS EN 1176 Parts 1-11 (Playground equipment and surfacing)
 BS EN 14974 (Facilities for users of roller sports equipment)
 BS EN 15312 (Free access multi-sports equipment)
 BS EN 16899 (Parkour Equipment)
 BS EN 16630 (Outdoor Fitness Equipment).



The Play Inspection Company Ltd
Unit 5 Glenmore Business Park
Blackhill Road
Poole
Dorset
BH16 6NL
01202 590675

Tithe Farm Recreation Ground

Inspection Ref: 2376658

Site Ref: 72258

Inspected: 23-May-2024 - 08:52 by Tristian Morrison (RPII Annual Inspector)

Risk Assessment: 12 Moderate Risk

**Location:**

The site is located in an area of public open space and is not directly overlooked by any properties in the local community.

Disabled Access:

Generally accessible; an area accessible to most.

9 - Low Risk

Item: Site General
Manufacturer: Owner/Operator
Surface Type: N/A
Item Quantity: 1
Equipment Compliance: N/A
Surface Area Compliance: N/A

Total Findings: 6



Finding 1

There is algae, silt or moss growth on the surface resulting in slippery conditions - Clean and treat appropriately

Finding 2

There is weed / vegetation growth on, between, or around the edges of the surfacing - Remove weed / vegetation growth

Finding 3

The surface is lifting at the edges and creating trip points - Repair perimeter of surfacing to remove trip points

Finding 4

There are significant gaps (over 30mm) between the surface and the edging or between the joints in the surface; these are large enough for a small foot to enter - Repair surfacing

Finding 5

The bitumen surface is worn or damaged - Repair the bitumen to provide a uniform surface

Finding 6

There is some evidence of fire damage to the surfacing - Monitor for any further deterioration and repair as required

6 - Low Risk

Item: Cycle Rack
Manufacturer: Not Identified
Surface Type: Grass
Item Quantity: 1
Equipment Compliance: N/A
Surface Area Compliance: N/A

Total Findings: 1



Finding 1

The item has been damaged - Monitor for any further deterioration and replace as required



i 6 - Low Risk

Item: Gate - Self Closing
Manufacturer: Easy Gate Ltd
Surface Type: Bitmac
Item Quantity: 1
Equipment Compliance: N/A
Surface Area Compliance: N/A

Total Findings: 2



Finding 1

The surface has eroded in some areas and may be slippery in wet conditions - Reinstate the surface

Finding 2

The paint is flaking off the metalwork - Rub down and re-paint

i 6 - Low Risk

Item: Fence
Manufacturer: Jacksons Fencing
Surface Type: N/A
Item Quantity: 1
Equipment Compliance: N/A
Surface Area Compliance: N/A

Total Findings: 1



Finding 1

There is some damage to the fence sections - Monitor for any further deterioration and repair as required

i 10 - Low Risk

Item: Roundabout
Manufacturer: Proludic
Surface Type: Wet Pour
Item Quantity: 1
Equipment Compliance: No
Surface Area Compliance: Yes

Total Findings: 6



Finding 1

The plywood has delaminated in some places - Remove all rough or splintered edges.

Finding 3

The item fails to meet the requirements of BS EN 1176 Part 1 4.2.7.2 for head and neck entrapment in the handgrip - Monitor - No remedial work recommended

Finding 5

The bearing on the unit is dry - Service and lubricate the bearing(s)

Finding 2

Parts of the timber are rough or splintered - Remove all rough or sharp edges

Finding 4

There is/are finger entrapment/s in the underside of the platform and the item fails to meet the requirements of BS EN 1176 Part 1 4.2.7.6 Entrapment of fingers - Replace underside timber platform

Finding 6

There is/are bolt cap covers missing or damaged on the item - Replace missing or damaged bolt cap covers

8 - Low Risk

Item: 1 Bay 2 Seat (Cradle)
Manufacturer: A.S & A Leisure Ltd
Surface Type: Wet Pour
Item Quantity: 1
Equipment Compliance: No
Surface Area Compliance: Yes

Total Findings: 7



Finding 1

The paintwork on this item has been damaged or worn exposing the metal underneath which is rusting / corroding - Treat affected areas and repaint

Finding 2

The safety surface around the area is beginning to wear - Monitor for any further deterioration and repair as required

Finding 3

BS EN 1176 Part 2: Annex A makes a recommendation that fences or enclosures should be upto 1.50m from the edges of the swing seat to the sides, and subject to risk assessment, from the edge of the impact area. This is however, a low risk finding and no remedial action is recommended. - Monitor - No remedial work recommended

Finding 4

The bushes are showing signs of wear - Monitor for any further deterioration and replace as required

Finding 5

There is some wear to the shackles. - Monitor for any further deterioration and replace when 40% worn

Finding 6

The chain links are worn excessively and require renewing - Replace worn chains

Finding 7

The chain openings are in excess of the 8.6mm as recommended by BS EN 1176 - Monitor - No remedial work recommended

i 6 - Low Risk

Item: Spring Bird
Manufacturer: Fahr Industries
Surface Type: Wet Pour
Item Quantity: 1
Equipment Compliance: Yes
Surface Area Compliance: Yes

Total Findings: 4



Finding 1

The surface has subsided in some areas - Monitor for any further deterioration and repair as required

Finding 3

There is/are bolt cap covers missing or damaged on the item - Replace missing or damaged bolt cap covers

Finding 2

There is some minor damage to the surface - Monitor for any further deterioration and repair as required

Finding 4

There is some graffiti present - Remove the graffiti

i 6 - Low Risk

Item: Swing Barrier
Manufacturer: Not Identified
Surface Type: Wet Pour
Item Quantity: 1
Equipment Compliance: N/A
Surface Area Compliance: N/A

Total Findings: 1



Finding 1

There is some evidence of fire damage to the item - Monitor for any further deterioration and repair as required

6 - Low Risk

Item: Spring Butterfly
Manufacturer: Fahr Industries
Surface Type: Wet Pour
Item Quantity: 1
Equipment Compliance: Yes
Surface Area Compliance: Yes

Total Findings: 2



Finding 1

The surface has subsided in some areas - Monitor for any further deterioration and repair as required

Finding 2

The Handgrips/Footrests rotate and may cause an unexpected movement for the user - Secure Handgrips/Footrests to prevent rotation.

8 - Low Risk

Item: Multi Play (Toddler)
Manufacturer: A.S & A Leisure Ltd
Surface Type: Wet Pour
Item Quantity: 1
Equipment Compliance: No
Surface Area Compliance: Yes

Total Findings: 6



Finding 1

There are a number of dents in the slide surface - Monitor for any further deterioration and repair as required

Finding 2

There is some graffiti present - Remove the graffiti

Finding 3

There is some evidence of fire damage to the item - Monitor for any further deterioration and repair as required

Finding 4

There is/are bolt cap covers missing or damaged on the item - Replace missing or damaged bolt cap covers

Finding 5

There is a missing fixing creating a finger entrapment in the slide entry and the item fails to meet the requirements of BS EN 1176 Part 1 4.2.7.6 Entrapment of fingers - Replace the fixing to remove finger entrapment

Finding 6

The paintwork on this item has been damaged or worn exposing the metal underneath which is rusting / corroding - Treat affected areas and repaint

i 10 - Low Risk

Item: Boulders
Manufacturer: Natural Feature
Surface Type: Tarmac
Item Quantity: 1
Equipment Compliance: N/A
Surface Area Compliance: N/A

Total Findings: 2



Finding 1

The rocks and/or boulders have moss/algae growth apparent - Clean and maintain

Finding 2

There is some graffiti present - Remove the graffiti

i 6 - Low Risk

Item: Litter Bin
Manufacturer: Not Identified
Surface Type: Tarmac
Item Quantity: 1
Equipment Compliance: N/A
Surface Area Compliance: N/A

Total Findings: 2



Finding 1

There is some evidence of fire damage to the item - Monitor for any further deterioration and repair as required

Finding 2

The paintwork on this item has been damaged or worn exposing the metal underneath which is rusting / corroding - Treat affected areas and repaint

4 - Very Low Risk

Item: Sign
Manufacturer: Owner/Operator
Surface Type: N/A
Item Quantity: 1
Equipment Compliance: N/A
Surface Area Compliance: N/A

Total Findings: 1



Finding 1

The item has been damaged - Monitor for any further deterioration and replace as required

6 - Low Risk

Item: Overhead Rotator
Manufacturer: Proludic
Surface Type: Wet Pour
Item Quantity: 1
Equipment Compliance: No
Surface Area Compliance: Yes

Total Findings: 3



Finding 1

There is some minor damage to the surface - Monitor for any further deterioration and repair as required

Finding 3

There is/are finger entrapment/s in the handgrip and the item fails to meet the requirements of BS EN 1176 Part 1 4.2.7.6 Entrapment of fingers - Monitor - No remedial work recommended

Finding 2

The bearing is showing signs of wear - Monitor for any further deterioration and replace as required

i 10 - Low Risk

Item: Multi Use Games Area (MUGA)
Manufacturer: Proludic
Surface Type: Bitmac
Item Quantity: 1
Equipment Compliance: Yes
Surface Area Compliance: N/A

Total Findings: 8



Finding 1

The weld(s) on this item have failed leaving sharp edges - Repair item

Finding 3

The paint is flaking off the metalwork - Rub down and re-paint

Finding 5

There is/are bolt cap covers missing or damaged on the item - Replace missing or damaged bolt cap covers

Finding 7

The backboard is damaged - Monitor for any further deterioration and repair as required

Finding 2

There are post / end caps missing from the item - Replace missing post caps

Finding 4

There is some graffiti present - Remove the graffiti

Finding 6

The item has been damaged - Monitor for any further deterioration and replace as required

Finding 8

A clearly visible facility sign should be provided in a prominent position with the wording as detailed BS EN 15312 - the equipment is not intended for children less than 3 years old - the warning - Do not climb on the framework or nets - the warning - Do not hang on the ring (if provided) - the warning - Do not wear rings or other jewellery - name and telephone number of the administrator - number to call in case of accident - Provide signage to BS EN 15312

6 - Low Risk

Item: Contact Swing - Type 4
Manufacturer: Proludic
Surface Type: Wet Pour
Item Quantity: 1
Equipment Compliance: Yes
Surface Area Compliance: Yes

Total Findings: 6



Finding 1

The seat has minor damage or wear - Monitor for any further deterioration and replace as required

Finding 3

The item has been damaged - Replace handgrip

Finding 5

The bushes are showing signs of wear - Monitor for any further deterioration and replace as required

Finding 2

The item has missing component(s) handgrip cover - Replace missing components

Finding 4

There is/are bolt cap covers missing or damaged on the item - Replace missing or damaged bolt cap covers

Finding 6

There is some notable evidence of chain wear - Monitor for any further deterioration and replace when 40% worn

10 - Low Risk

Item: Rotating Spring Board
Manufacturer: Proludic
Surface Type: Wet Pour
Item Quantity: 1
Equipment Compliance: Yes
Surface Area Compliance: Yes

Total Findings: 3



Finding 1

The bearing is worn / damaged and the item is not operating correctly - Repair / replace

Finding 3

Signage is missing - Replace sign

Finding 2

The item has missing component(s) handgrip - Consider replacing missing components

8 - Low Risk

Item: Concrete Skate Park
Manufacturer: Not Identified
Surface Type: Concrete
Item Quantity: 1
Equipment Compliance: Yes
Surface Area Compliance: No

Total Findings: 6



Finding 1

The surface has eroded in some areas and may be slippery in wet conditions - Reinstate the surface

Finding 3

The item has insufficient safety zone allowed as required by BS EN 14974 – 6.4. This should equal at least 2.0 metres on this item - Monitor - no reasonably practicable action given the risk assessment

Finding 5

Joints between the riding / rolling surfaces shall not be greater than 5mm in contravention of the requirements of BS EN 14974 – 6.2.4 - Take corrective action to ensure that the gaps between the joints do not exceed 5mm

Finding 2

There is offensive graffiti present - Remove as soon as practicable

Finding 4

There is some evidence of fire damage to the surfacing - Monitor for any further deterioration and repair as required

Finding 6

The riding surface has minor damage apparent - Monitor for any further deterioration and repair as required

! 12 - Moderate Risk

Item: Multi Play (Senior)
Manufacturer: Proludic
Surface Type: Wet Pour
Item Quantity: 1
Equipment Compliance: No
Surface Area Compliance: No

Total Findings: 13



Finding 1

The surfacing dimensions are short and do not meet with the requirements of the current applicable standard - Monitor - no remedial action recommended

Finding 3

There is or are fixings missing on the item - Replace all missing fixings

Finding 5

There is/are finger entrapment/s in the platform and the item fails to meet the requirements of BS EN 1176 Part 1 4.2.7.6
Entrapment of fingers - Replace the platform

Finding 7

There is/are bolt cap covers missing or damaged on the item - Replace missing or damaged bolt cap covers

Finding 9

The item has missing component(s) - Consider replacing missing components

Finding 11

There is some minor damage to the surface - Monitor for any further deterioration and repair as required

Finding 13

The item has been damaged - Monitor for any further deterioration and replace as required

Finding 2

There is/are bolt cap covers missing or damaged on the item - Replace missing or damaged bolt cap covers

Finding 4

The platform has been damaged - Replace the platform

Finding 6

There is/are inserts missing - Replace missing inserts

Finding 8

The ropes/nets are worn/damaged in places - Monitor for any further deterioration and repair or replace as required

Finding 10

The paintwork on this item has been damaged or worn exposing the metal underneath which is rusting / corroding - Treat affected areas and repaint

Finding 12

There is moderate damage to the surface - Repair the damaged areas of surfacing

6 - Low Risk

Item: Litter Bin
Manufacturer: Not Identified
Surface Type: Grass
Item Quantity: 1
Equipment Compliance: N/A
Surface Area Compliance: N/A

Total Findings: 2



Finding 1

There is some graffiti present - Remove the graffiti

Finding 2

The paint is flaking off the metalwork - Rub down and re-paint

4 - Very Low Risk

Item: Bench
Manufacturer: Not Identified
Surface Type: Bitmac
Item Quantity: 1
Equipment Compliance: N/A
Surface Area Compliance: N/A

Total Findings: 1



Finding 1

This item is satisfactory - no work required -

Findings information

6 - Low Risk (Finding 1)

Item: Ancillary Items - Site General
Manufacturer: Owner/Operator

Risk Level: L - Low Risk
Surface: N/A



Finding: There is algae, silt or moss growth on the surface resulting in slippery conditions

Action: Clean and treat appropriately

i 6 - Low Risk (Finding 2)

Item: Ancillary Items - Site General
Manufacturer: Owner/Operator

Risk Level: L - Low Risk
Surface: N/A



Finding: There is weed / vegetation growth on, between, or around the edges of the surfacing
Action: Remove weed / vegetation growth

i 8 - Low Risk (Finding 3)

Item: Ancillary Items - Site General
Manufacturer: Owner/Operator

Risk Level: L - Low Risk
Surface: N/A



Finding: The surface is lifting at the edges and creating trip points
Action: Repair perimeter of surfacing to remove trip points

i 9 - Low Risk (Finding 4)

Item: Ancillary Items - Site General
Manufacturer: Owner/Operator

Risk Level: L - Low Risk
Surface: N/A



Finding: There are significant gaps (over 30mm) between the surface and the edging or between the joints in the surface; these are large enough for a small foot to enter

Action: Repair surfacing

i 6 - Low Risk (Finding 5)

Item: Ancillary Items - Site General
Manufacturer: Owner/Operator

Risk Level: L - Low Risk
Surface: N/A



Finding: The bitumen surface is worn or damaged

Action: Repair the bitumen to provide a uniform surface

i 8 - Low Risk (Finding 6)

Item: Ancillary Items - Site General
Manufacturer: Owner/Operator

Risk Level: L - Low Risk
Surface: N/A



Finding: There is some evidence of fire damage to the surfacing

Action: Monitor for any further deterioration and repair as required

i 6 - Low Risk (Finding 1)

Item: Ancillary Items - Cycle Rack
Manufacturer: Not Identified

Risk Level: L - Low Risk
Surface: Grass



Finding: The item has been damaged

Action: Monitor for any further deterioration and replace as required

i 6 - Low Risk (Finding 1)

Item: Gates - Gate - Self Closing
Manufacturer: Easy Gate Ltd

Risk Level: L - Low Risk
Surface: Bitmac



Finding: The surface has eroded in some areas and may be slippery in wet conditions

Action: Reinstate the surface

i 6 - Low Risk (Finding 2)

Item: Gates - Gate - Self Closing
Manufacturer: Easy Gate Ltd

Risk Level: L - Low Risk
Surface: Bitmac



Finding: The paint is flaking off the metalwork

Action: Rub down and re-paint

i 6 - Low Risk (Finding 1)

Item: Fences - Fence
Manufacturer: Jacksons Fencing

Risk Level: L - Low Risk
Surface: N/A



Finding: There is some damage to the fence sections

Action: Monitor for any further deterioration and repair as required

i 6 - Low Risk (Finding 1)

Item: Rotor Play - Roundabout
Manufacturer: Proludic

Risk Level: L - Low Risk
Surface: Wet Pour



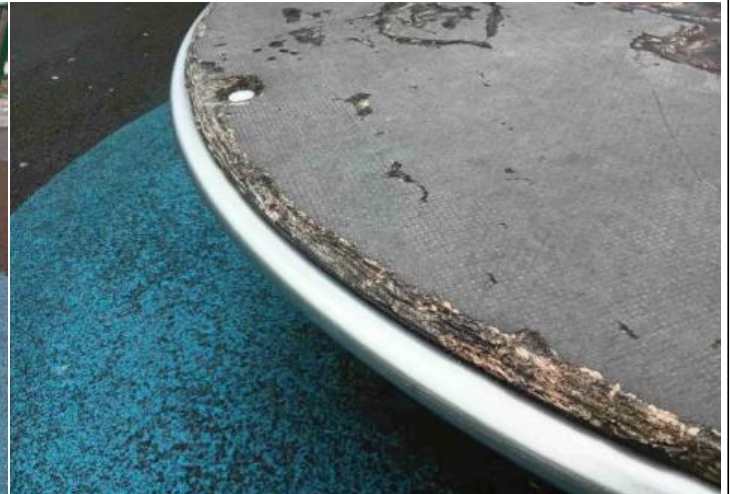
Finding: The plywood has delaminated in some places

Action: Remove all rough or splintered edges.

i 6 - Low Risk (Finding 2)

Item: Rotor Play - Roundabout
Manufacturer: Proludic

Risk Level: L - Low Risk
Surface: Wet Pour



Finding: Parts of the timber are rough or splintered

Action: Remove all rough or sharp edges

i 5 - Very Low Risk (Finding 3)

Item: Rotor Play - Roundabout
Manufacturer: Proludic

Risk Level: V - Very Low Risk
Surface: Wet Pour



Finding: The item fails to meet the requirements of BS EN 1176 Part 1 4.2.7.2 for head and neck entrapment in the handgrip

Action: Monitor - No remedial work recommended

i 10 - Low Risk (Finding 4)

Item: Rotor Play - Roundabout
Manufacturer: Proludic

Risk Level: L - Low Risk
Surface: Wet Pour



Finding: There is/are finger entrapment/s in the underside of the platform and the item fails to meet the requirements of BS EN 1176 Part 1 4.2.7.6 Entrapment of fingers

Action: Replace underside timber platform

i 6 - Low Risk (Finding 5)

Item: Rotor Play - Roundabout
Manufacturer: Proludic

Risk Level: L - Low Risk
Surface: Wet Pour



Finding: The bearing on the unit is dry

Action: Service and lubricate the bearing(s)

i 4 - Very Low Risk (Finding 6)

Item: Rotor Play - Roundabout
Manufacturer: Proludic

Risk Level: V - Very Low Risk
Surface: Wet Pour



Finding: There is/are bolt cap covers missing or damaged on the item

Action: Replace missing or damaged bolt cap covers

i 6 - Low Risk (Finding 1)

Item: Swings - 1 Bay 2 Seat (Cradle)
Manufacturer: A.S & A Leisure Ltd

Risk Level: L - Low Risk
Surface: Wet Pour



Finding: The paintwork on this item has been damaged or worn exposing the metal underneath which is rusting / corroding

Action: Treat affected areas and repaint

i 6 - Low Risk (Finding 2)

Item: Swings - 1 Bay 2 Seat (Cradle)
Manufacturer: A.S & A Leisure Ltd

Risk Level: L - Low Risk
Surface: Wet Pour



Finding: The safety surface around the area is beginning to wear

Action: Monitor for any further deterioration and repair as required

i 6 - Low Risk (Finding 3)

Item: Swings - 1 Bay 2 Seat (Cradle)
Manufacturer: A.S & A Leisure Ltd

Risk Level: L - Low Risk
Surface: Wet Pour



Finding: BS EN 1176 Part 2: Annex A makes a recommendation that fences or enclosures should be upto 1.50m from the edges of the swing seat to the sides, and subject to risk assessment, from the edge of the impact area. This is however, a low risk finding and no remedial action is recommended.

Action: Monitor - No remedial work recommended

i 4 - Very Low Risk (Finding 4)

Item: Swings - 1 Bay 2 Seat (Cradle)
Manufacturer: A.S & A Leisure Ltd

Risk Level: V - Very Low Risk
Surface: Wet Pour



Finding: The bushes are showing signs of wear

Action: Monitor for any further deterioration and replace as required

i 6 - Low Risk (Finding 5)

Item: Swings - 1 Bay 2 Seat (Cradle)
Manufacturer: A.S & A Leisure Ltd

Risk Level: L - Low Risk
Surface: Wet Pour



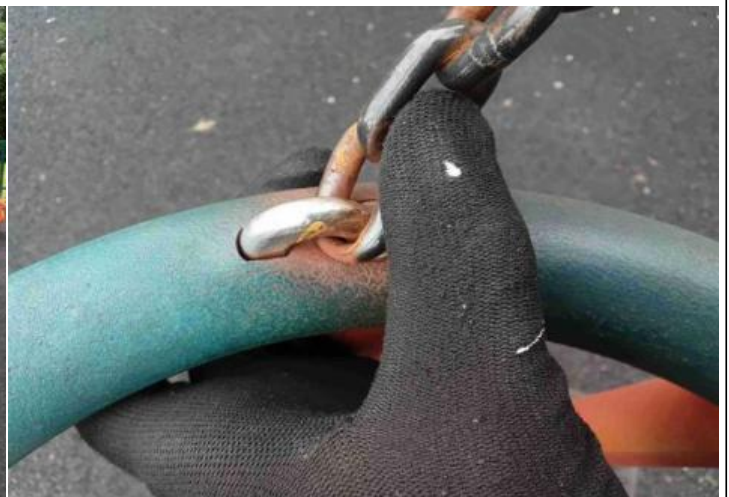
Finding: There is some wear to the shackles.

Action: Monitor for any further deterioration and replace when 40% worn

i 8 - Low Risk (Finding 6)

Item: Swings - 1 Bay 2 Seat (Cradle)
Manufacturer: A.S & A Leisure Ltd

Risk Level: L - Low Risk
Surface: Wet Pour



Finding: The chain links are worn excessively and require renewing

Action: Replace worn chains

i 5 - Very Low Risk (Finding 7)

Item: Swings - 1 Bay 2 Seat (Cradle)
Manufacturer: A.S & A Leisure Ltd

Risk Level: V - Very Low Risk
Surface: Wet Pour



Finding: The chain openings are in excess of the 8.6mm as recommended by BS EN 1176 **Action:** Monitor - No remedial work recommended

i 6 - Low Risk (Finding 1)

Item: Rocking Equipment - Spring Bird
Manufacturer: Fahr Industries

Risk Level: L - Low Risk
Surface: Wet Pour



Finding: The surface has subsided in some areas **Action:** Monitor for any further deterioration and repair as required

i 4 - Very Low Risk (Finding 2)

Item: Rocking Equipment - Spring Bird
Manufacturer: Fahr Industries

Risk Level: V - Very Low Risk
Surface: Wet Pour



Finding: There is some minor damage to the surface

Action: Monitor for any further deterioration and repair as required

i 4 - Very Low Risk (Finding 3)

Item: Rocking Equipment - Spring Bird
Manufacturer: Fahr Industries

Risk Level: V - Very Low Risk
Surface: Wet Pour



Finding: There is/are bolt cap covers missing or damaged on the item

Action: Replace missing or damaged bolt cap covers

i 0 - Risk Assessment not Undertaken (Finding 4)

Item: Rocking Equipment - Spring Bird
Manufacturer: Fahr Industries

Risk Level: N - Risk Assessment not Undertaken
Surface: Wet Pour



Finding: There is some graffiti present

Action: Remove the graffiti

i 6 - Low Risk (Finding 1)

Item: Swings - Swing Barrier
Manufacturer: Not Identified

Risk Level: L - Low Risk
Surface: Wet Pour



Finding: There is some evidence of fire damage to the item

Action: Monitor for any further deterioration and repair as required

i 6 - Low Risk (Finding 1)

Item: Rocking Equipment - Spring Butterfly
Manufacturer: Fahr Industries

Risk Level: L - Low Risk
Surface: Wet Pour



Finding: The surface has subsided in some areas

Action: Monitor for any further deterioration and repair as required

i 6 - Low Risk (Finding 2)

Item: Rocking Equipment - Spring Butterfly
Manufacturer: Fahr Industries

Risk Level: L - Low Risk
Surface: Wet Pour



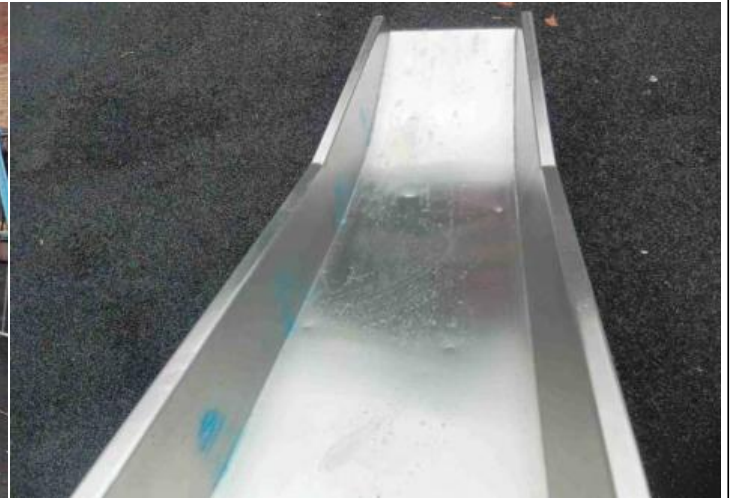
Finding: The Handgrips/Footrests rotate and may cause an unexpected movement for the user

Action: Secure Handgrips/Footrests to prevent rotation.

i 4 - Very Low Risk (Finding 1)

Item: Activity Equipment - Multi Play (Toddler)
Manufacturer: A.S & A Leisure Ltd

Risk Level: V - Very Low Risk
Surface: Wet Pour



Finding: There are a number of dents in the slide surface

Action: Monitor for any further deterioration and repair as required

i 0 - Risk Assessment not Undertaken (Finding 2)

Item: Activity Equipment - Multi Play (Toddler)
Manufacturer: A.S & A Leisure Ltd

Risk Level: N - Risk Assessment not Undertaken
Surface: Wet Pour



Finding: There is some graffiti present

Action: Remove the graffiti

i 6 - Low Risk (Finding 3)

Item: Activity Equipment - Multi Play (Toddler)
Manufacturer: A.S & A Leisure Ltd

Risk Level: L - Low Risk
Surface: Wet Pour



Finding: There is some evidence of fire damage to the item **Action:** Monitor for any further deterioration and repair as required

i 4 - Very Low Risk (Finding 4)

Item: Activity Equipment - Multi Play (Toddler)
Manufacturer: A.S & A Leisure Ltd

Risk Level: V - Very Low Risk
Surface: Wet Pour



Finding: There is/are bolt cap covers missing or damaged on the item **Action:** Replace missing or damaged bolt cap covers

i 8 - Low Risk (Finding 5)

Item: Activity Equipment - Multi Play (Toddler)
Manufacturer: A.S & A Leisure Ltd

Risk Level: L - Low Risk
Surface: Wet Pour



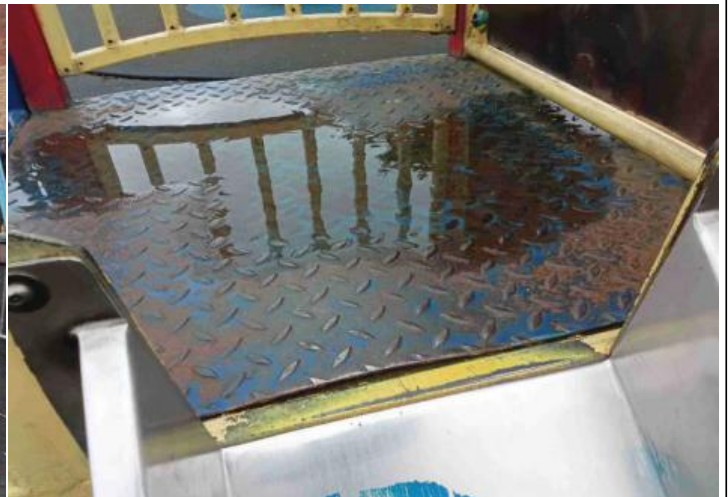
Finding: There is a missing fixing creating a finger entrapment in the slide entry and the item fails to meet the requirements of BS EN 1176 Part 1 4.2.7.6 Entrapment of fingers

Action: Replace the fixing to remove finger entrapment

i 6 - Low Risk (Finding 6)

Item: Activity Equipment - Multi Play (Toddler)
Manufacturer: A.S & A Leisure Ltd

Risk Level: L - Low Risk
Surface: Wet Pour



Finding: The paintwork on this item has been damaged or worn exposing the metal underneath which is rusting / corroding

Action: Treat affected areas and repaint

i 10 - Low Risk (Finding 1)

Item: Ancillary Items - Boulders
Manufacturer: Natural Feature

Risk Level: L - Low Risk
Surface: Tarmac



Finding: The rocks and/or boulders have moss/algae growth apparent

Action: Clean and maintain

i 0 - Risk Assessment not Undertaken (Finding 2)

Item: Ancillary Items - Boulders
Manufacturer: Natural Feature

Risk Level: N - Risk Assessment not Undertaken
Surface: Tarmac



Finding: There is some graffiti present

Action: Remove the graffiti

i 6 - Low Risk (Finding 1)

Item: Ancillary Items - Litter Bin
Manufacturer: Not Identified

Risk Level: L - Low Risk
Surface: Tarmac



Finding: There is some evidence of fire damage to the item
Action: Monitor for any further deterioration and repair as required

i 6 - Low Risk (Finding 2)

Item: Ancillary Items - Litter Bin
Manufacturer: Not Identified

Risk Level: L - Low Risk
Surface: Tarmac



Finding: The paintwork on this item has been damaged or worn exposing the metal underneath which is rusting / corroding
Action: Treat affected areas and repaint

i 4 - Very Low Risk (Finding 1)

Item: Ancillary Items - Sign
Manufacturer: Owner/Operator

Risk Level: V - Very Low Risk
Surface: N/A



Finding: The item has been damaged

Action: Monitor for any further deterioration and replace as required

i 4 - Very Low Risk (Finding 1)

Item: Rotor Play - Overhead Rotator
Manufacturer: Proludic

Risk Level: V - Very Low Risk
Surface: Wet Pour



Finding: There is some minor damage to the surface

Action: Monitor for any further deterioration and repair as required

i 6 - Low Risk (Finding 2)

Item: Rotor Play - Overhead Rotator
Manufacturer: Proludic

Risk Level: L - Low Risk
Surface: Wet Pour



Finding: The bearing is showing signs of wear

Action: Monitor for any further deterioration and replace as required

i 5 - Very Low Risk (Finding 3)

Item: Rotor Play - Overhead Rotator
Manufacturer: Proludic

Risk Level: V - Very Low Risk
Surface: Wet Pour



Finding: There is/are finger entrapment/s in the handgrip and the item fails to meet the requirements of BS EN 1176 Part 1 4.2.7.6 Entrapment of fingers

Action: Monitor - No remedial work recommended

i 10 - Low Risk (Finding 1)

Item: Multi Use Games Area - Multi Use Games Area (MUGA)
Manufacturer: Proludic

Risk Level: L - Low Risk
Surface: Bitmac



Finding: The weld(s) on this item have failed leaving sharp edges **Action:** Repair item

i 6 - Low Risk (Finding 2)

Item: Multi Use Games Area - Multi Use Games Area (MUGA)
Manufacturer: Proludic

Risk Level: L - Low Risk
Surface: Bitmac



Finding: There are post / end caps missing from the item

Action: Replace missing post caps

i 6 - Low Risk (Finding 3)

Item: Multi Use Games Area - Multi Use Games Area (MUGA)
Manufacturer: Proludic

Risk Level: L - Low Risk
Surface: Bitmac



Finding: The paint is flaking off the metalwork

Action: Rub down and re-paint

i 0 - Risk Assessment not Undertaken (Finding 4)

Item: Multi Use Games Area - Multi Use Games Area (MUGA)
Manufacturer: Proludic

Risk Level: N - Risk Assessment not Undertaken
Surface: Bitmac



Finding: There is some graffiti present

Action: Remove the graffiti

i 4 - Very Low Risk (Finding 5)

Item: Multi Use Games Area - Multi Use Games Area (MUGA)
Manufacturer: Proludic

Risk Level: V - Very Low Risk
Surface: Bitmac



Finding: There is/are bolt cap covers missing or damaged on the item

Action: Replace missing or damaged bolt cap covers

i 6 - Low Risk (Finding 6)

Item: Multi Use Games Area - Multi Use Games Area (MUGA)
Manufacturer: Proludic

Risk Level: L - Low Risk
Surface: Bitmac



Finding: The item has been damaged

Action: Monitor for any further deterioration and replace as required

i 6 - Low Risk (Finding 7)

Item: Multi Use Games Area - Multi Use Games Area (MUGA)
Manufacturer: Proludic

Risk Level: L - Low Risk

Surface: Bitmac



Finding: The backboard is damaged

Action: Monitor for any further deterioration and repair as required

i 5 - Very Low Risk (Finding 8)

Item: Multi Use Games Area - Multi Use Games Area (MUGA)
Manufacturer: Proludic

Risk Level: V - Very Low Risk
Surface: Bitmac



Finding: A clearly visible facility sign should be provided in a prominent position with the wording as detailed BS EN 15312 - the equipment is not intended for children less than 3 years old - the warning - Do not climb on the framework or nets - the warning - Do not hang on the ring (if provided) - the warning - Do not wear rings or other jewellery - name and telephone number of the administrator - number to call in case of accident

Action: Provide signage to BS EN 15312

i 6 - Low Risk (Finding 1)

Item: Swings - Contact Swing - Type 4
Manufacturer: Proludic

Risk Level: L - Low Risk
Surface: Wet Pour



Finding: The seat has minor damage or wear

Action: Monitor for any further deterioration and replace as required

i 6 - Low Risk (Finding 2)

Item: Swings - Contact Swing - Type 4
Manufacturer: Proludic

Risk Level: L - Low Risk
Surface: Wet Pour



Finding: The item has missing component(s) handgrip cover

Action: Replace missing components

i 6 - Low Risk (Finding 3)

Item: Swings - Contact Swing - Type 4
Manufacturer: Proludic

Risk Level: L - Low Risk
Surface: Wet Pour



Finding: The item has been damaged

Action: Replace handgrip

i 4 - Very Low Risk (Finding 4)

Item: Swings - Contact Swing - Type 4
Manufacturer: Proludic

Risk Level: V - Very Low Risk
Surface: Wet Pour



Finding: There is/are bolt cap covers missing or damaged on the item

Action: Replace missing or damaged bolt cap covers

i 4 - Very Low Risk (Finding 5)

Item: Swings - Contact Swing - Type 4
Manufacturer: Proludic

Risk Level: V - Very Low Risk
Surface: Wet Pour



Finding: The bushes are showing signs of wear

Action: Monitor for any further deterioration and replace as required

i 6 - Low Risk (Finding 6)

Item: Swings - Contact Swing - Type 4
Manufacturer: Proludic

Risk Level: L - Low Risk
Surface: Wet Pour



Finding: There is some notable evidence of chain wear

Action: Monitor for any further deterioration and replace when 40% worn

i 8 - Low Risk (Finding 1)

Item: Rocking Equipment - Rotating Spring Board
Manufacturer: Proludic

Risk Level: L - Low Risk
Surface: Wet Pour



Finding: The bearing is worn / damaged and the item is not operating correctly
Action: Repair / replace

i 10 - Low Risk (Finding 2)

Item: Rocking Equipment - Rotating Spring Board
Manufacturer: Proludic

Risk Level: L - Low Risk
Surface: Wet Pour



Finding: The item has missing component(s) handgrip
Action: Consider replacing missing components

i 4 - Very Low Risk (Finding 3)

Item: Rocking Equipment - Rotating Spring Board
Manufacturer: Proludic

Risk Level: V - Very Low Risk
Surface: Wet Pour



Finding: Signage is missing

Action: Replace sign

i 6 - Low Risk (Finding 1)

Item: Wheeled Sports - Concrete Skate Park
Manufacturer: Not Identified

Risk Level: L - Low Risk
Surface: Concrete



Finding: The surface has eroded in some areas and may be slippery in wet conditions

Action: Reinstate the surface

i 0 - Risk Assessment not Undertaken (Finding 2)

Item: Wheeled Sports - Concrete Skate Park
Manufacturer: Not Identified

Risk Level: N - Risk Assessment not Undertaken
Surface: Concrete



Finding: There is offensive graffiti present

Action: Remove as soon as practicable

i 6 - Low Risk (Finding 3)

Item: Wheeled Sports - Concrete Skate Park
Manufacturer: Not Identified

Risk Level: L - Low Risk
Surface: Concrete



Finding: The item has insufficient safety zone allowed as required by BS EN 14974 – 6.4. This should equal at least 2.0 metres on this item

Action: Monitor - no reasonably practicable action given the risk assessment

i 8 - Low Risk (Finding 4)

Item: Wheeled Sports - Concrete Skate Park
Manufacturer: Not Identified

Risk Level: L - Low Risk
Surface: Concrete



Finding: There is some evidence of fire damage to the surfacing

Action: Monitor for any further deterioration and repair as required

i 5 - Very Low Risk (Finding 5)

Item: Wheeled Sports - Concrete Skate Park
Manufacturer: Not Identified

Risk Level: V - Very Low Risk
Surface: Concrete



Finding: Joints between the riding / rolling surfaces shall not be greater than 5mm in contravention of the requirements of BS EN 14974 – 6.2.4
Action: Take corrective action to ensure that the gaps between the joints do not exceed 5mm

i 6 - Low Risk (Finding 6)

Item: Wheeled Sports - Concrete Skate Park
Manufacturer: Not Identified

Risk Level: L - Low Risk
Surface: Concrete



Finding: The riding surface has minor damage apparent

Action: Monitor for any further deterioration and repair as required

i 5 - Very Low Risk (Finding 1)

Item: Activity Equipment - Multi Play (Senior)
Manufacturer: Proludic

Risk Level: V - Very Low Risk
Surface: Wet Pour



Finding: The surfacing dimensions are short and do not meet with the requirements of the current applicable standard

Action: Monitor - no remedial action recommended

i 4 - Very Low Risk (Finding 2)

Item: Activity Equipment - Multi Play (Senior)
Manufacturer: Proludic

Risk Level: V - Very Low Risk
Surface: Wet Pour



Finding: There is/are bolt cap covers missing or damaged on the item

Action: Replace missing or damaged bolt cap covers

i 8 - Low Risk (Finding 3)

Item: Activity Equipment - Multi Play (Senior)
Manufacturer: Proludic

Risk Level: L - Low Risk
Surface: Wet Pour



Finding: There is or are fixings missing on the item

Action: Replace all missing fixings

! 12 - Moderate Risk (Finding 4)

Item: Activity Equipment - Multi Play (Senior)
Manufacturer: Proludic

Risk Level: M - Moderate Risk
Surface: Wet Pour



Finding: The platform has been damaged

Action: Replace the platform

i 5 - Very Low Risk (Finding 5)

Item: Activity Equipment - Multi Play (Senior)
Manufacturer: Proludic

Risk Level: V - Very Low Risk
Surface: Wet Pour



Finding: There is/are finger entrapment/s in the platform and the item fails to meet the requirements of BS EN 1176 Part 1 4.2.7.6 Entrapment of fingers

Action: Replace the platform

i 4 - Very Low Risk (Finding 6)

Item: Activity Equipment - Multi Play (Senior)
Manufacturer: Proludic

Risk Level: V - Very Low Risk
Surface: Wet Pour



Finding: There is/are inserts missing

Action: Replace missing inserts

i 4 - Very Low Risk (Finding 7)

Item: Activity Equipment - Multi Play (Senior)
Manufacturer: Proludic

Risk Level: V - Very Low Risk
Surface: Wet Pour



Finding: There is/are bolt cap covers missing or damaged on the item

Action: Replace missing or damaged bolt cap covers

i 6 - Low Risk (Finding 8)

Item: Activity Equipment - Multi Play (Senior)
Manufacturer: Proludic

Risk Level: L - Low Risk
Surface: Wet Pour



Finding: The ropes/nets are worn/damaged in places

Action: Monitor for any further deterioration and repair or replace as required

i 6 - Low Risk (Finding 9)

Item: Activity Equipment - Multi Play (Senior)
Manufacturer: Proludic

Risk Level: L - Low Risk
Surface: Wet Pour



Finding: The item has missing component(s)

Action: Consider replacing missing components

i 6 - Low Risk (Finding 10)

Item: Activity Equipment - Multi Play (Senior)
Manufacturer: Proludic

Risk Level: L - Low Risk
Surface: Wet Pour



Finding: The paintwork on this item has been damaged or worn exposing the metal underneath which is rusting / corroding

Action: Treat affected areas and repaint

i 4 - Very Low Risk (Finding 11)

Item: Activity Equipment - Multi Play (Senior)
Manufacturer: Proludic

Risk Level: V - Very Low Risk
Surface: Wet Pour



Finding: There is some minor damage to the surface

Action: Monitor for any further deterioration and repair as required

i 8 - Low Risk (Finding 12)

Item: Activity Equipment - Multi Play (Senior)
Manufacturer: Proludic

Risk Level: L - Low Risk
Surface: Wet Pour



Finding: There is moderate damage to the surface

Action: Repair the damaged areas of surfacing

i 6 - Low Risk (Finding 13)

Item: Activity Equipment - Multi Play (Senior)
Manufacturer: Proludic

Risk Level: L - Low Risk
Surface: Wet Pour



Finding: The item has been damaged

Action: Monitor for any further deterioration and replace as required

i 0 - Risk Assessment not Undertaken (Finding 1)

Item: Ancillary Items - Litter Bin
Manufacturer: Not Identified

Risk Level: N - Risk Assessment not Undertaken
Surface: Grass



Finding: There is some graffiti present

Action: Remove the graffiti

i 6 - Low Risk (Finding 2)

Item: Ancillary Items - Litter Bin
Manufacturer: Not Identified

Risk Level: L - Low Risk
Surface: Grass



Finding: The paint is flaking off the metalwork

Action: Rub down and re-paint