

6

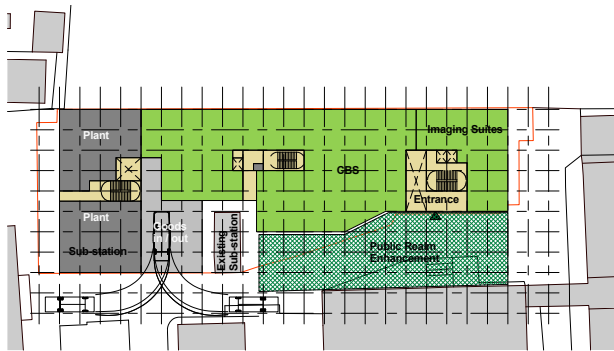
Appendix

6.2

Proposal Options 1 and 2 Drawings

6.2.2

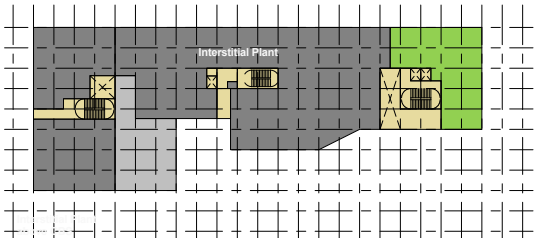
Option 2



1

Level 0 - Option #02

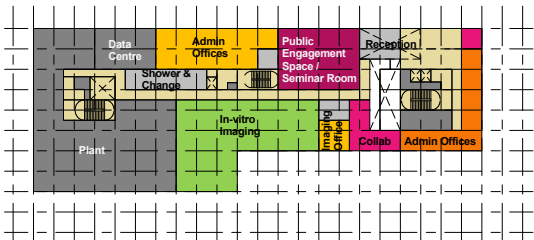
1 : 500



2

Level 0 Int - Option #02

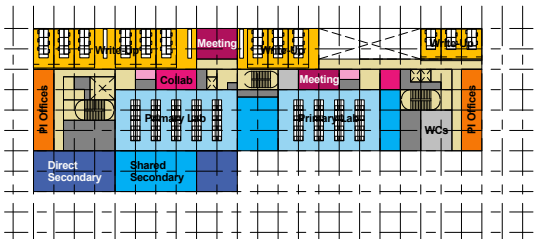
1 : 500



3

Level 1 - Option #02

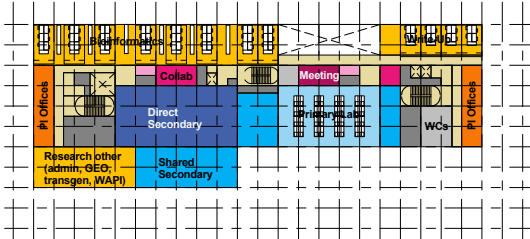
1 : 500



4

Level 2 - Option #02

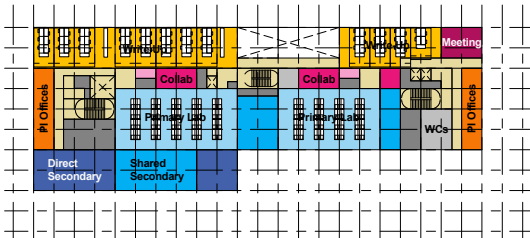
1 : 500



5

Level 3 - Option #02

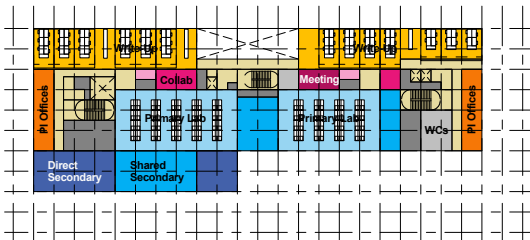
1 : 500



6

Level 4 - Option #02

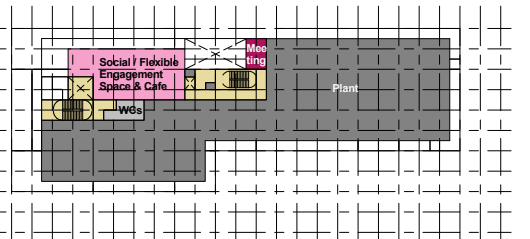
1 : 500



7

Level 5 - Option #02

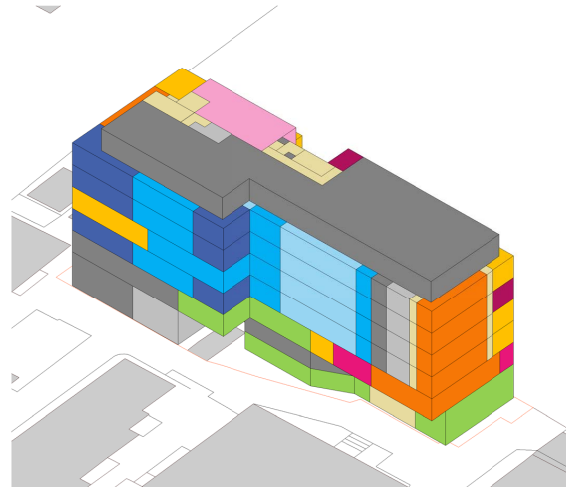
1 : 500



8

Level 6 - Option #02

1 : 500



9

3D Axonometric - Option #02

Space Type Schedule Totals - Option #02			
Type	Area	Target Areas	Area Difference
Admin Cellular Office	87 m²	80 m²	7 m²
Admin Shared Office	120 m²	113 m²	7 m²
Balance	437 m²	477 m²	-40 m²
Circulation	1656 m²	1561 m²	95 m²
Collaboration Space	207 m²	120 m²	87 m²
Direct Secondary Laboratories	588 m²	538 m²	50 m²
Meeting Space	278 m²	243 m²	30 m²
PI Cellular Office	348 m²	300 m²	48 m²
Plant	2102 m²	2191 m²	-89 m²
Primary Laboratories	1241 m²	1170 m²	71 m²
Researcher Shared Office	1427 m²	1342 m²	85 m²
Shared Secondary Laboratories	731 m²	655 m²	76 m²
Social Space	184 m²	123 m²	61 m²
Specialist / In-Vitro	256 m²	250 m²	6 m²
Specialist / Other	839 m²	1090 m²	-251 m²
Specialist Shared Office	25 m²	21 m²	4 m²
	10525 m²		

Typical Per Floor Occupancy Schedule	
No. of PIs	6/7
No. of RSRs	54/63
Bioinformatics PIs	4
No. of RSRs	36

Copyright Hawkins\Brown Architects  
No implied licence exists. This drawing should not be used to calculate areas for the purposes of valuation. Do not scale this drawing. All dimensions to be checked on the site by the contractor and such dimensions to be their responsibility. All work must comply with relevant British Standards and Building Regulations requirements. Drawing errors and omissions to be reported to the architect. To be read in conjunction with Architect's specification and other consultant information.

Rev	Description	Date
-----	-------------	------

Please Note:  
The areas shown here are indicative net internal areas only and are liable to change. Engineering (i.e. internal walls, external walls, secondary risers & secondary circulation) are not included within any of the areas shown and will be developed over the RIBA Stage 2 design.

159 St John Street  
London EC1V 4QJ  
mail@hawkinsbrown.com  
hawkinsbrown.com

Hawkins\Brown

Project  
London Institute of Medical  
London Institute of Medical  
Sciences

Drawing  
Floor Plans Options Matrix -  
Stage 01 Option #02

Scale @ A1  
1 : 500  
Date  
28/09/17

Drawn By  
JK  
Checked By  
BP

Job Number  
17034  
Status  
Purpose of Issue

Drawing No.  
SK\_007  
Rev

