

MASONRY NOTES

UNLESS NOTED OTHERWISE ALL MORTAR BELOW DPC TO BE 1:1/4:3 (M12)(CEMENT:LIME:SAND), ALL MORTAR ABOVE DPC TO BE 1:1:6 (M4) (CEMENT:LIME:SAND)

UNLESS NOTED OTHERWISE BLOCKWORK TO BE 7N DENSE CONCRETE, LAID STRETCHER BOND.

Do not scale from drawing. Use Written dimensions only. This drawing is the copyright of JHA Consulting and must not be reproduced without permission

GENERAL NOTES

THIS DRAWING IS TO BE READ IN CONJUNCTION WITH ALL OTHER DRAWINGS AND DOCUMENTS APPLICABLE TO THE PROJECT.

WORK TO FIGURED DIMENSIONS ONLY. DO NOT SCALE.

THE CONTRACTOR MUST CHECK ALL DIMENSIONS AND LEVELS ON SITE BEFORE PROCEEDING. REFER ANY DISCREPANCY TO JHA CONSULTING BEFORE PROCEEDING.

REFER TO ARCHITECTS DRAWINGS FOR SETTING OUT DIMENSIONS.

ALL TEMPORARY WORKS ARE THE RESPONSIBILITY OF THE CONTRACTOR.

CONCRETE NOTES-UNLESS NOTED OTHERWISE:

ALL REINFORCED CONCRETE TO BE GRADE C32/40 (BS8500)

MIN. CEMENT CONTENT = 380kg/m³
CONSISTENCE S2 = 70mm
MAX FREE WATER/CEMENT RATIO = 0.40

ALL MASS CONCRETE TO BE GRADE RC25 OR C20/25 (BS8500)

MAX. AGGREGATE SIZE = 20mm
MIN. CEMENT CONTENT = 300kg/m³
CONSISTENCE S3 = 130
MAX FREE WATER/CEMENT RATIO = 0.55

ALL REINFORCEMENT PREFIXED 'R' TO BE MILD STEEL (PLAIN BAR) IN COMPLIANCE WITH BS8666 WITH A SPECIFIED CHARACTERISTIC STRENGTH OF 250N/mm²

ALL REINFORCEMENT PREFIXED 'H' TO BE HIGH YIELD STEEL (DEFORMED BAR) IN COMPLIANCE WITH BS8666 WITH A SPECIFIED CHARACTERISTIC STRENGTH OF 500N/mm²

ALL WELDED MESH REINFORCEMENT TO BE IN COMPLIANCE WITH BS8666 WITH A SPECIFIED CHARACTERISTIC STRENGTH OF 485N/mm²

UNLESS NOTED OTHERWISE THE COVER TO ALL REINFORCEMENT IS TO BE :-

TOP COVER = 50mm
BOTTOM COVER = 50mm
END COVER = 50mm

FOR FOUNDATIONS:
WHERE FORMATION ON BLINDING: COVER = 50mm
WHERE FORMATION ON SOIL: COVER = 75mm

PILING

THE SPECIALISTS DESIGN TO BE FULLY APPROVED BY JHA CONSULTING PRIOR TO INSTALLATION.

Rev.	Date	Description	By
------	------	-------------	----

Status	PRELIMINARY
--------	-------------

Based on architectural drawing number(s)

Client	PORTREATH PARISH COUNCIL
--------	--------------------------

JHA CONSULTING

MOUNT AGAR
OLD CARNON HILL
CARNON DOWNS
TRURO
CORNWALL TR3 6LE

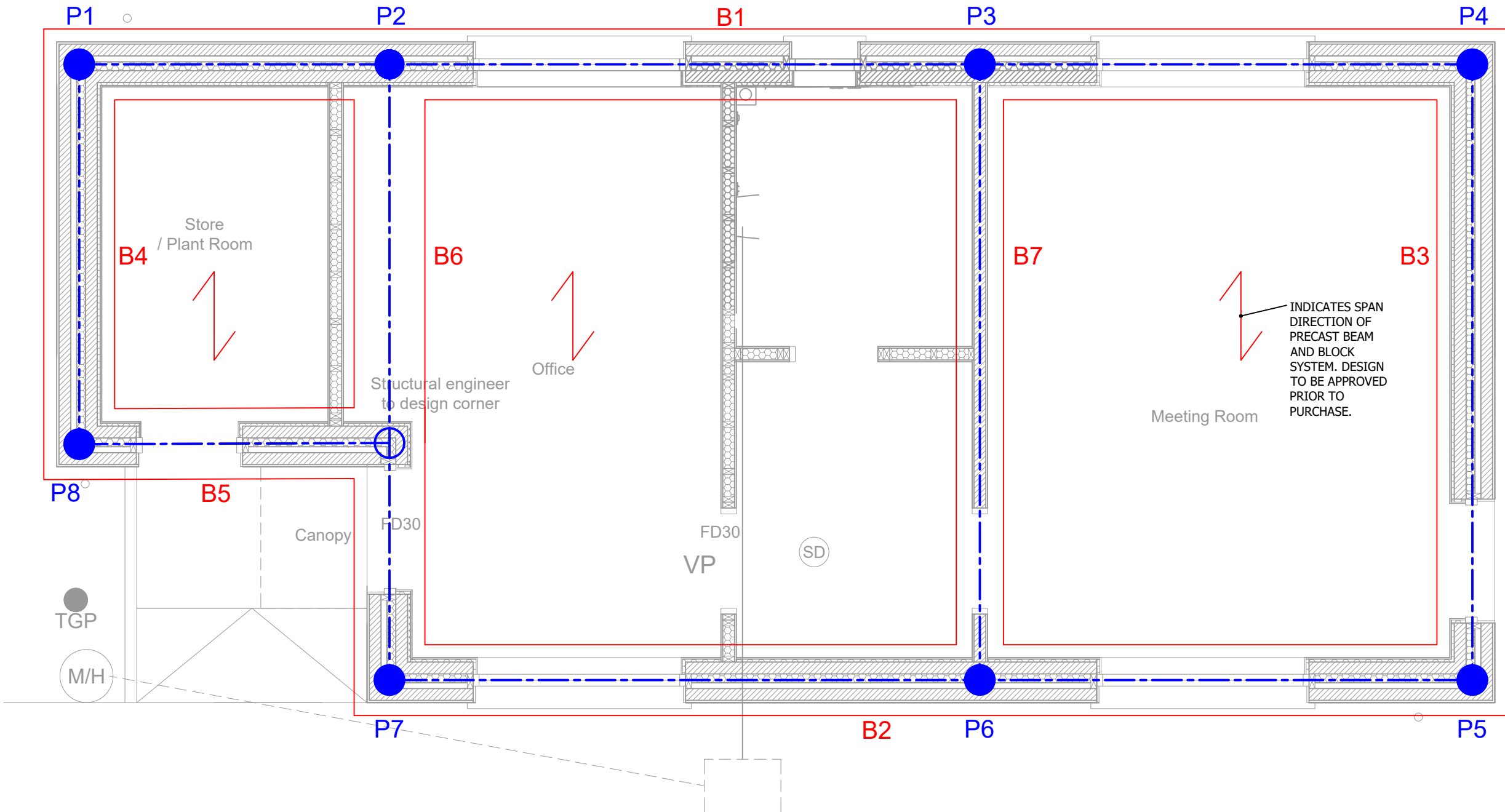
TEL: 07531 612332
EMAIL: john@jhaconsulting.co.uk

Project Title	OFFICE/ MEETING FORMER PUBLIC TOILETS THE SEAFRONT PORTREATH.
---------------	--

Drawing Title	PILING & GROUND BEAM LAYOUT
---------------	--------------------------------

Date JUL - 2023	Scale NTS	Engineer JH
Job No. 2031	Drawn	Checked JH

Drawing Number 2031-01	Rev.
---------------------------	------



PILE & GROUND BEAMS

NOTE: ALL BEAMS AND PILES CENTRED ON WALLS
BEAMS 600 WIDE X 400 DP EXCEPT B7 400 SQ

PILE REF	PILE TYPE	CUT OFF LEVEL	REQUIRED WORKING LOAD (KN)
P1	SUPPLIER DESIGN	?	100
P2	SUPPLIER DESIGN	?	275
P3	SUPPLIER DESIGN	?	300
P4	SUPPLIER DESIGN	?	175
P5	SUPPLIER DESIGN	?	175
P6	SUPPLIER DESIGN	?	325
P7	SUPPLIER DESIGN	?	200
P8	SUPPLIER DESIGN	?	100