

6

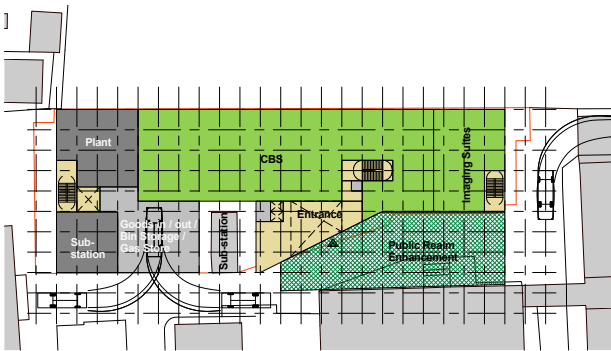
Appendix

6.2

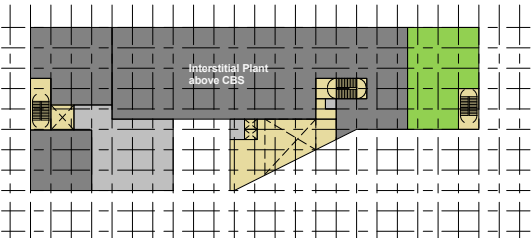
Proposal Options 1 and 2 Drawings

6.2.1

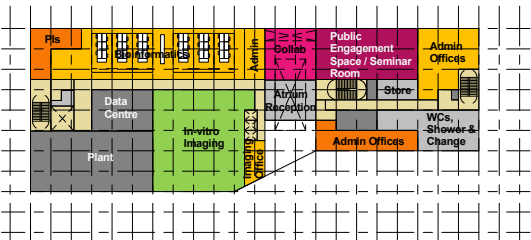
Option 1



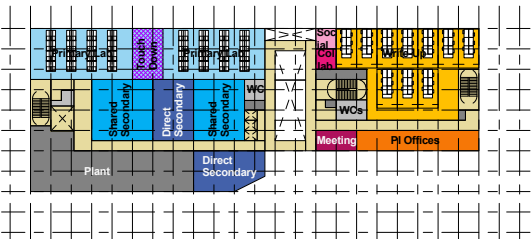
1 Level 0 - Option #01B
1 : 500



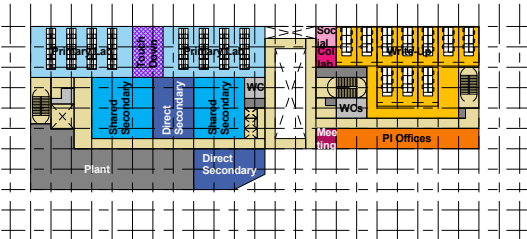
2 Level 0 Int - Option #01B
1 : 500



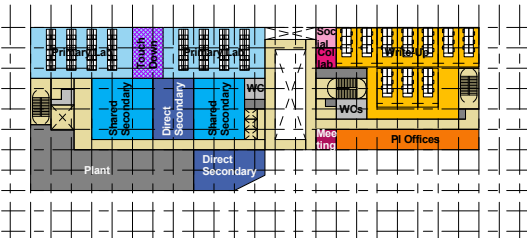
3 Level 1 - Option #01B
1 : 500



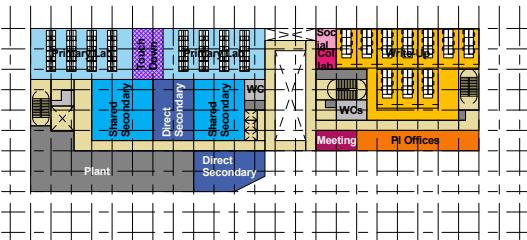
4 Level 2 - Option #01B
1 : 500



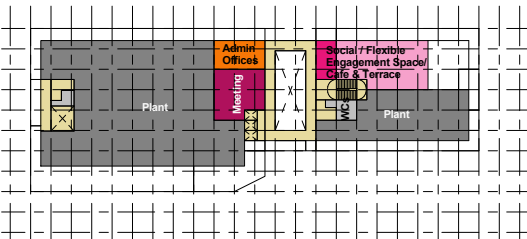
5 Level 3 - Option #01B
1 : 500



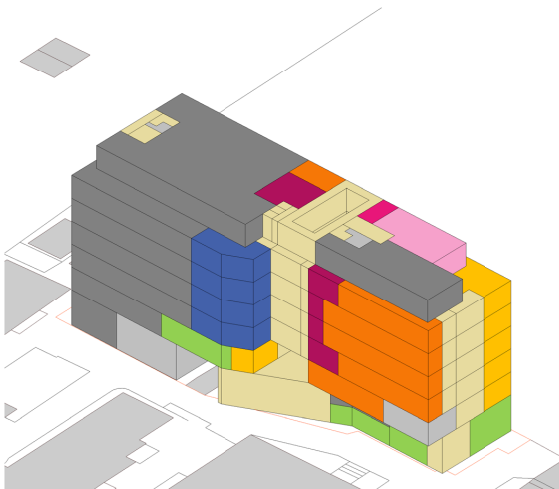
6 Level 4 - Option #01B
1 : 500



7 Level 6 - Option #01B
1 : 500



8 Level 7 - Option #01B
1 : 500



9 3D Axonometric - Option #01B

Space Type Schedule Totals - Option #01B			
Type	Area	Target Areas	Area Difference
Admin Cellular Office	98 m²	80 m²	18 m²
Admin Shared Office	120 m²	113 m²	7 m²
Balance	509 m²	477 m²	32 m²
Circulation	1926 m²	1561 m²	365 m²
Collaboration Space	133 m²	120 m²	13 m²
Direct Secondary Laboratories	542 m²	538 m²	4 m²
Meeting Space	264 m²	248 m²	16 m²
PI Cellular Office	327 m²	300 m²	27 m²
Plant	2158 m²	2191 m²	-33 m²
Primary Laboratories	1252 m²	1170 m²	82 m²
Researcher Shared Office	1342 m²	1342 m²	0 m²
Shared Secondary Laboratories	719 m²	655 m²	64 m²
Social Space	153 m²	123 m²	30 m²
Specialist / In-Vitro	250 m²	250 m²	0 m²
Specialist / Other	863 m²	1090 m²	-227 m²
Specialist Shared Office	22 m²	21 m²	1 m²
	10678 m²		

Typical Per Floor Occupancy Schedule	
No. of PIs	6/7
No. of RSRs	54/63
Bioinformatics PIs	4
No. of RSRs	36

Copyright Hawkins\Brown Architects
No implied licence exists. This drawing should not be used to calculate areas for the purposes of valuation. Do not scale this drawing. All dimensions to be checked on the site by the contractor and such dimensions to be their responsibility. All work must comply with relevant British Standards and Building Regulations requirements. Drawing errors and omissions to be reported to the architect. To be read in conjunction with Architect's specification and other consultant information.

Rev	Description	Date
-----	-------------	------

Please Note:
The areas shown here are indicative net internal areas only and are liable to change. Engineering (i.e internal walls, external walls, secondary risers & secondary circulation) are not included within any of the areas shown and will be developed over the RIBA Stage 2 design.

159 St John Street
London EC1V 4QJ
mail@hawkinsbrown.com
hawkinsbrown.com

Hawkins\Brown

Project
London Institute of Medical
London Institute of Medical
Sciences

Drawing
Floor Plans Options Matrix -
Stage 01 Option #01

Scale @ A1
1 : 500
Date
28/09/17

Drawn By
JK
Checked By
BP

Job Number
17034
Status
Purpose of Issue

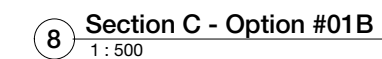
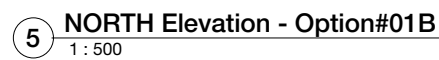
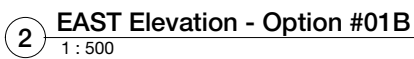
Drawing No.
SK_006
Rev

6

Appendix

6.2 Proposal Options 1 and 2 Drawings

6.2.1 Option 1



Rev	Description	Date
-----	-------------	------

Hawkins\Brown

Drawing
Elevation and Section Study 01 -
Stage 01 Option #01

Drawn By JK	Checked By BP
----------------	------------------

Drawing No.	Rev
SK_021	