

INVITATION TO TENDER (OPEN PROCEDURE)

FOR

Fleet Air Arm Museum (Environmental sustainability and environmental resilience of Cobham Hall) - Design & Build.

Annex I – Cobham Location Plan – Showing Footprint, current Services and Traffic Management.

The National Museum of the Royal Navy
HMS Naval Base (PP66)
Portsmouth
PO1 3NH
ISSUE: 001

Table of Contents

Annex I **1**

1.1 Cobham Location Summary. 3

1.2 Cobham Location Plan..... 3

1.3 Cobham Services and Utilities 4

1.4 Cobham Traffic Management..... 4

1.1 - Cobham Location Summary

Cobham Hall is visually anonymous – quite deliberately. Externally it looks like a large green aircraft hangar. There is no signage on the building or on the gates. The main Fleet Air Arm Museum is sited on the south side of the B3151 which goes through the Royal Naval air base. Cobham Hall is north of this road. If you are approaching from the A303, the Museum is signposted at the eastern end of the B3151. As you approach the naval base before you reach the main Museum site, there is a small crossroads, where a minor road crosses the B3151. Turn right at this crossroads, signposted SOMERTON. The lane is Stockwitch Lane, and there is a farm on the corner, Stockwitch Farm. Less than quarter of a mile up the lane, on your left you will see a large green aircraft hangar – Cobham Hall. The entrance gates are beyond the building. **(see 1.2 – Cobham Location Plan).**

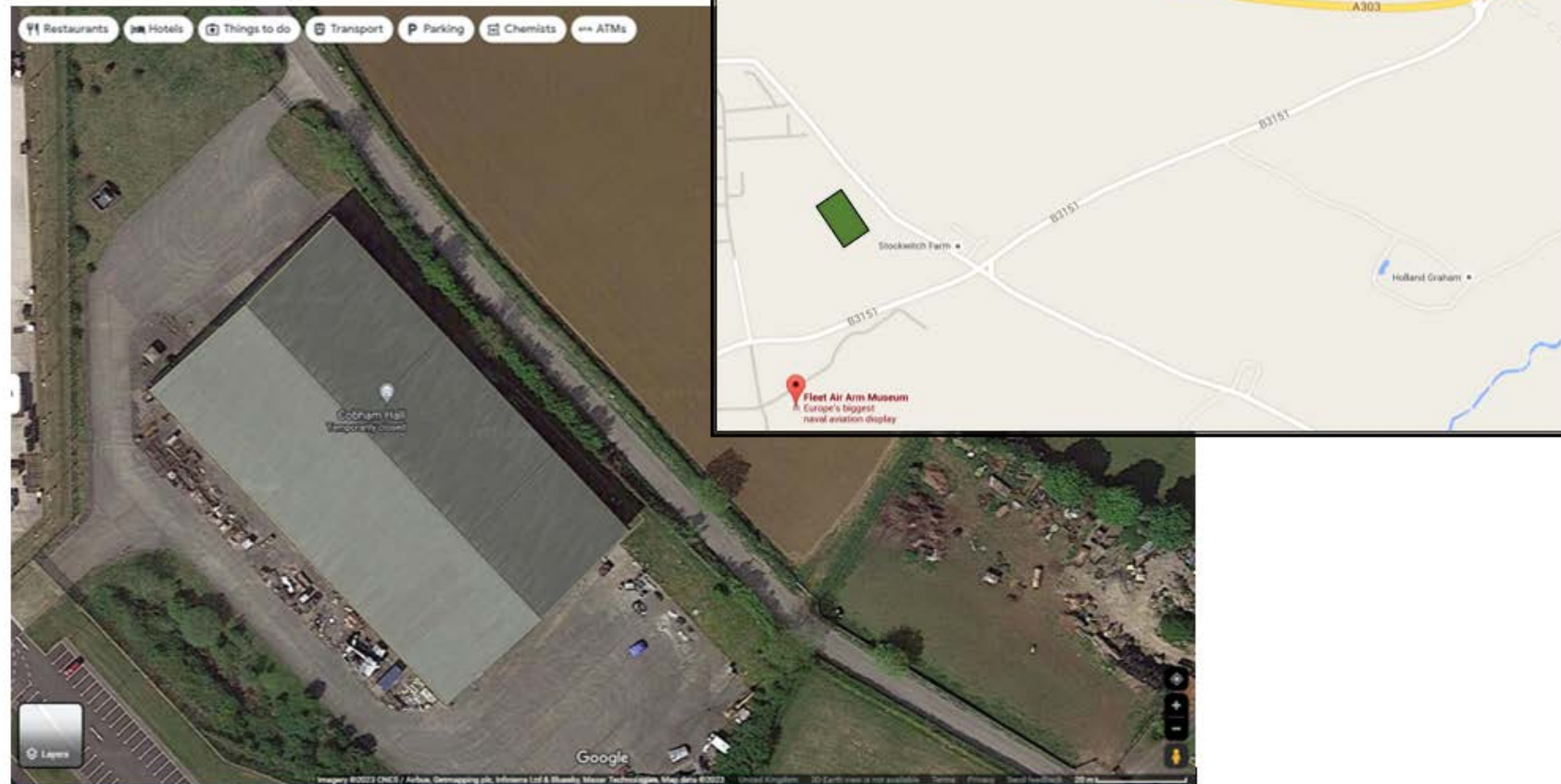
Cobham Hall is owned and outright by the National Museum of the Royal Navy, with land registered to the Museum and separate to RNAS Yeovilton. No access to the air-station is necessary as part of this project.

Cobham Hall is an impressive museum storage facility designed to hold airframes and the full range of two and three dimensional objects within the FAAM's collection, including extensive archive material. It is open to the public by special access tours only, which are held throughout the year. Access is usually limited to a handful of staff working within the building each day, who access the building from an entrance along the north east side.

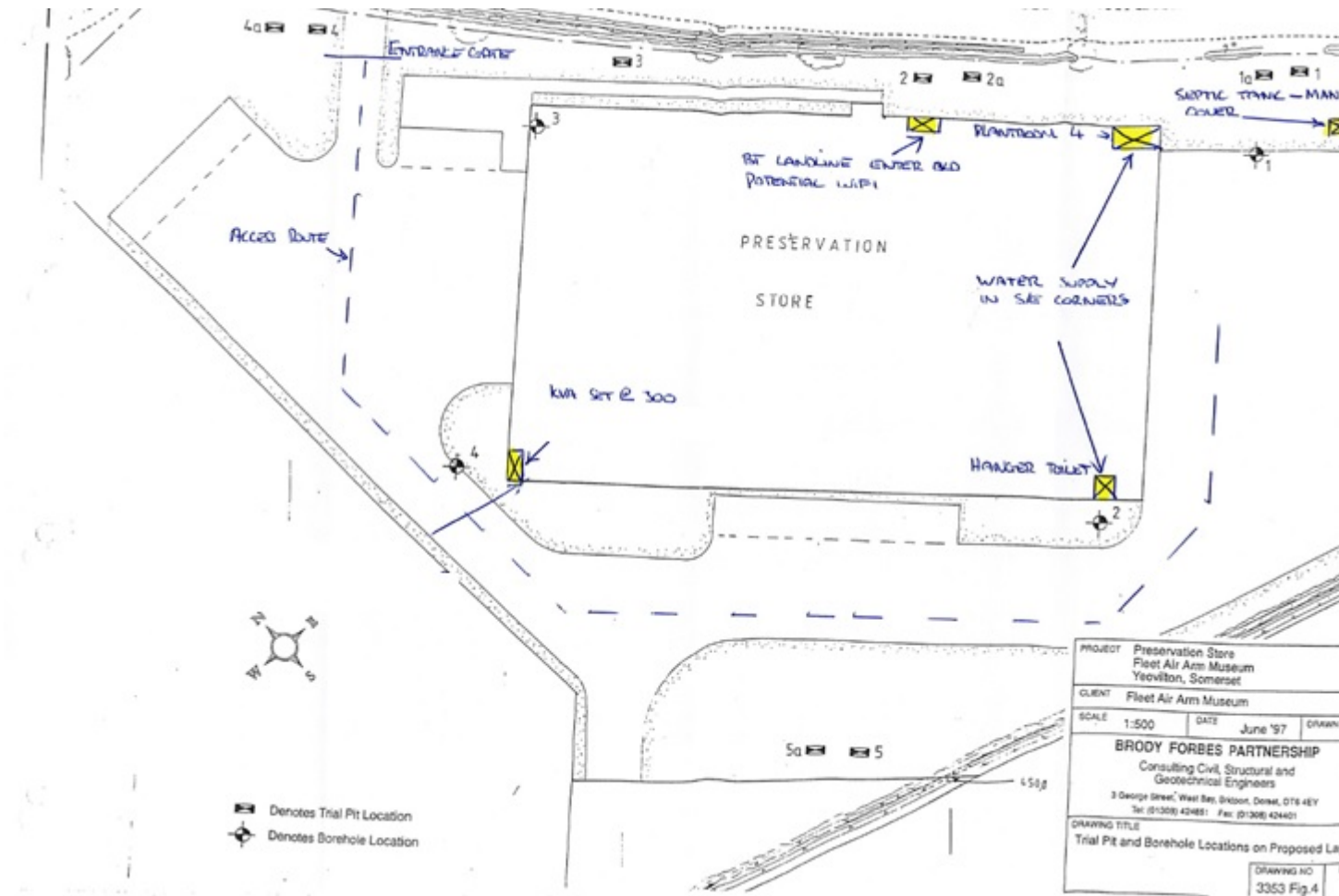
It is important to note that the wider site is a shared working area, with the Museum working in partnership with tenants. Out tenants occupy the southern section of the compound, with regular traffic movements through the wider site throughout the day for upto 40 vehicles. An indication of traffic management and overall orientation can be seen in section - **1.4 Cobham Traffic Management**. Galliford Try will continue their tenancy throughout the works period and it is important to acknowledge this in any proposal and related risk and safety management.

The site is typically opened and accessible throughout the day, Monday to Friday between 8am and 6pm. Additional access can be facilitated outside of these hours as part of an approved project plan.

1.2 - Cobham Location Plan



1.3 - Cobham Services and Utilities



1.4 - Cobham Traffic Management

