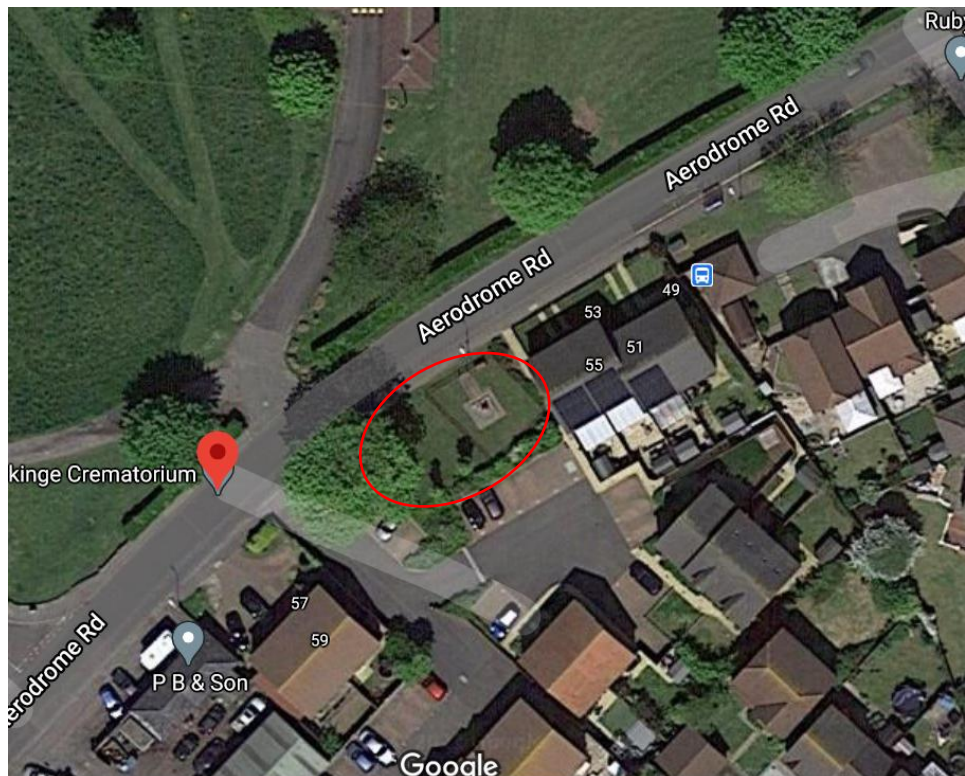


1. Canterbury Road Grass Verges



2. Memorial Garden at Aerodrome Road



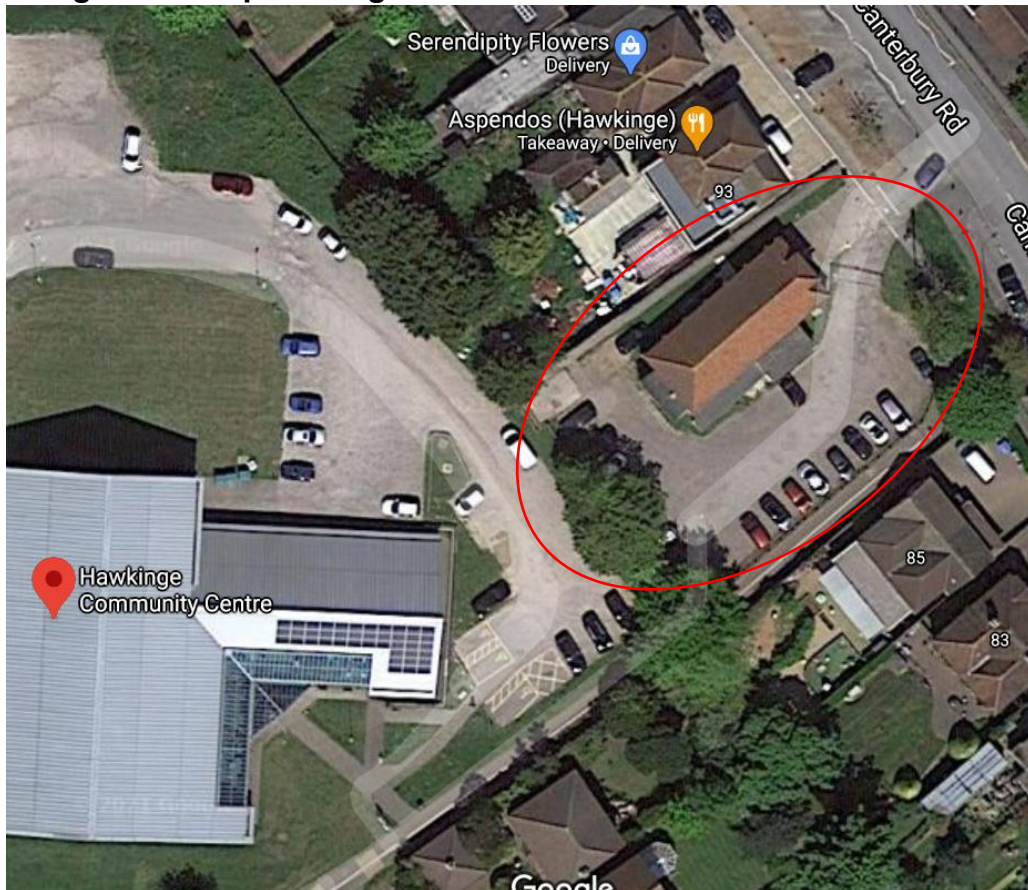
3. Aerodrome Road/Haven Drive junction grass verges including air raid shelter



4. Megone Close shrubs



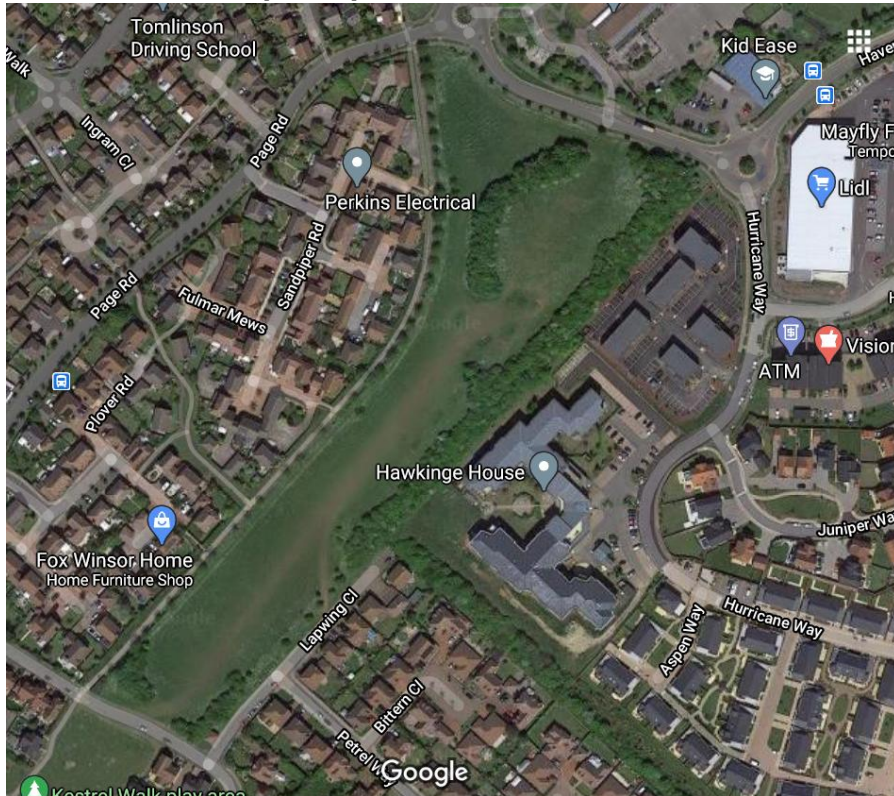
5. Village Hall car park verges



6. Frank & Betties Field



7. Churchill Field Open Space



8. The Village Green, Hawkinge Community Centre car park & outdoor gym

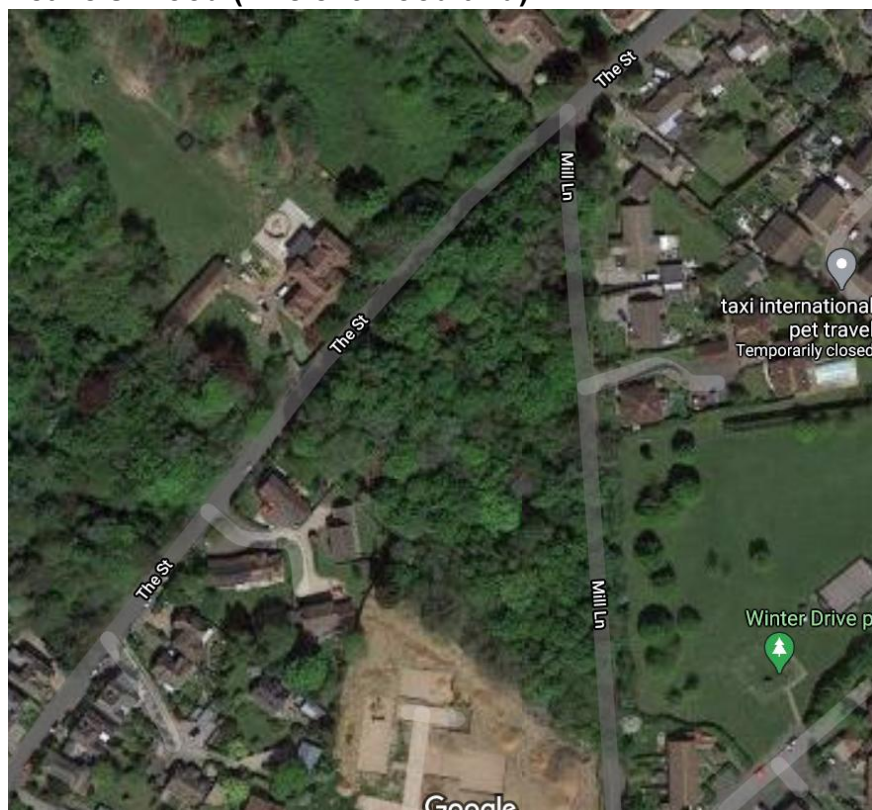


△ This area is now a car park, not shown on google map

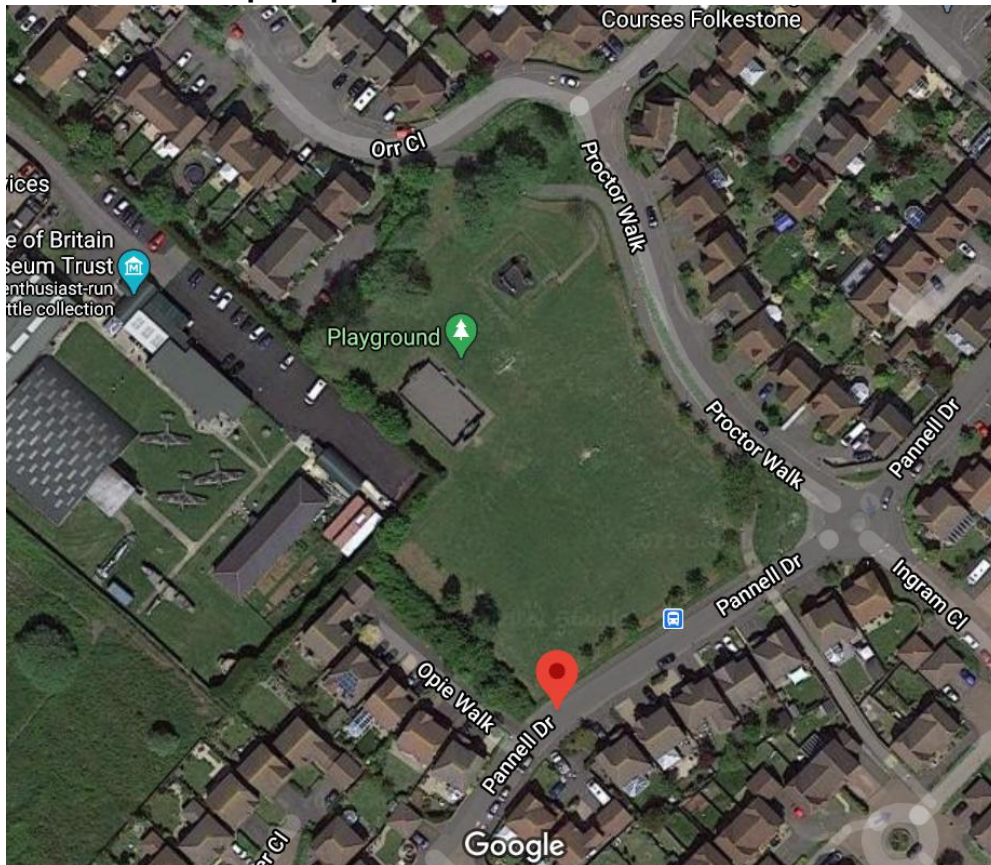
9. Kettle Drive open space



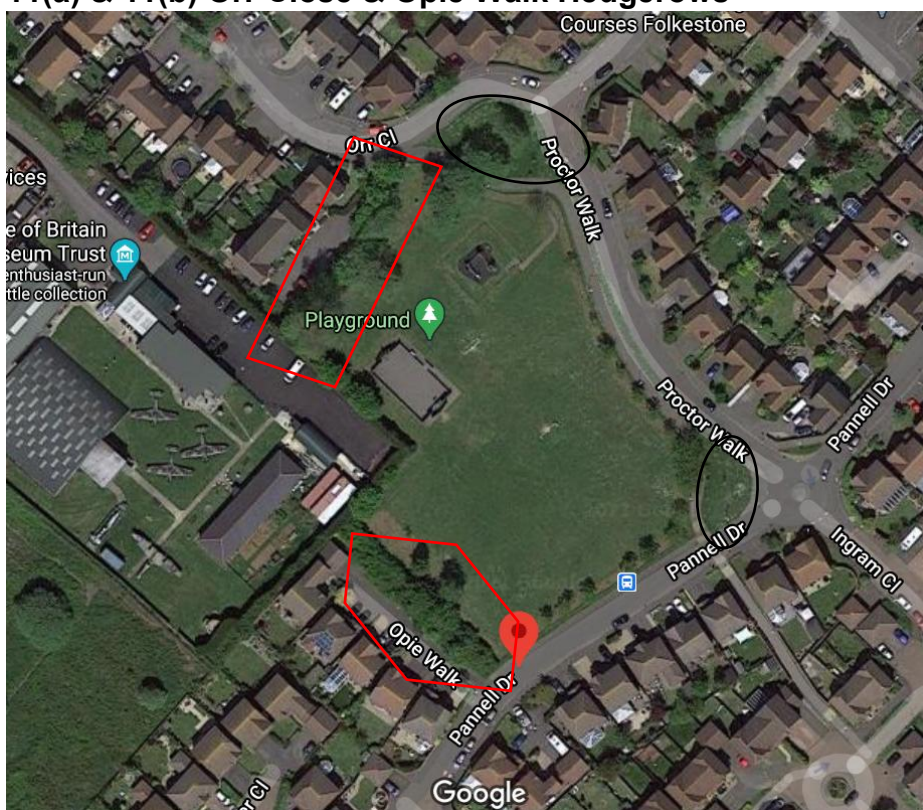
10. Leake's Wood (Ancient woodland)



11. Pannell Drive open space



11(a) & 11(b) Orr Close & Opie Walk Hedgerows



○ These areas are Highways and not maintained by Hawkinge TC

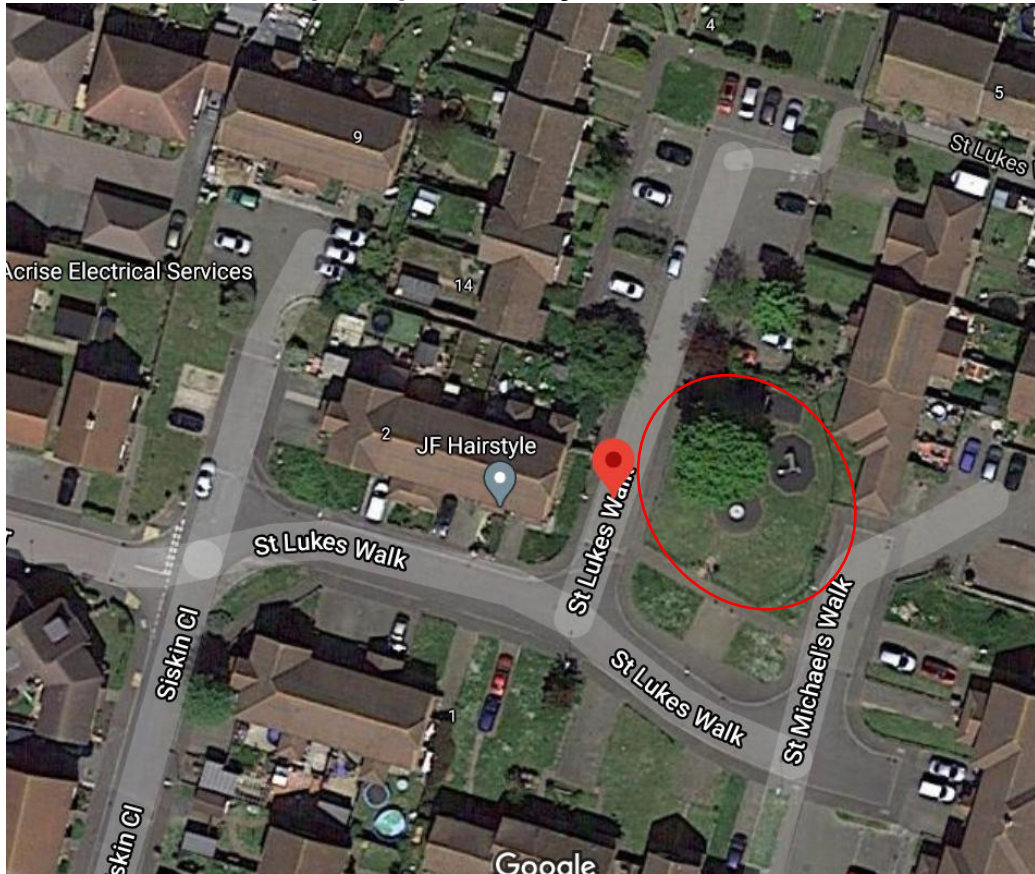
12. Gibson Close open space



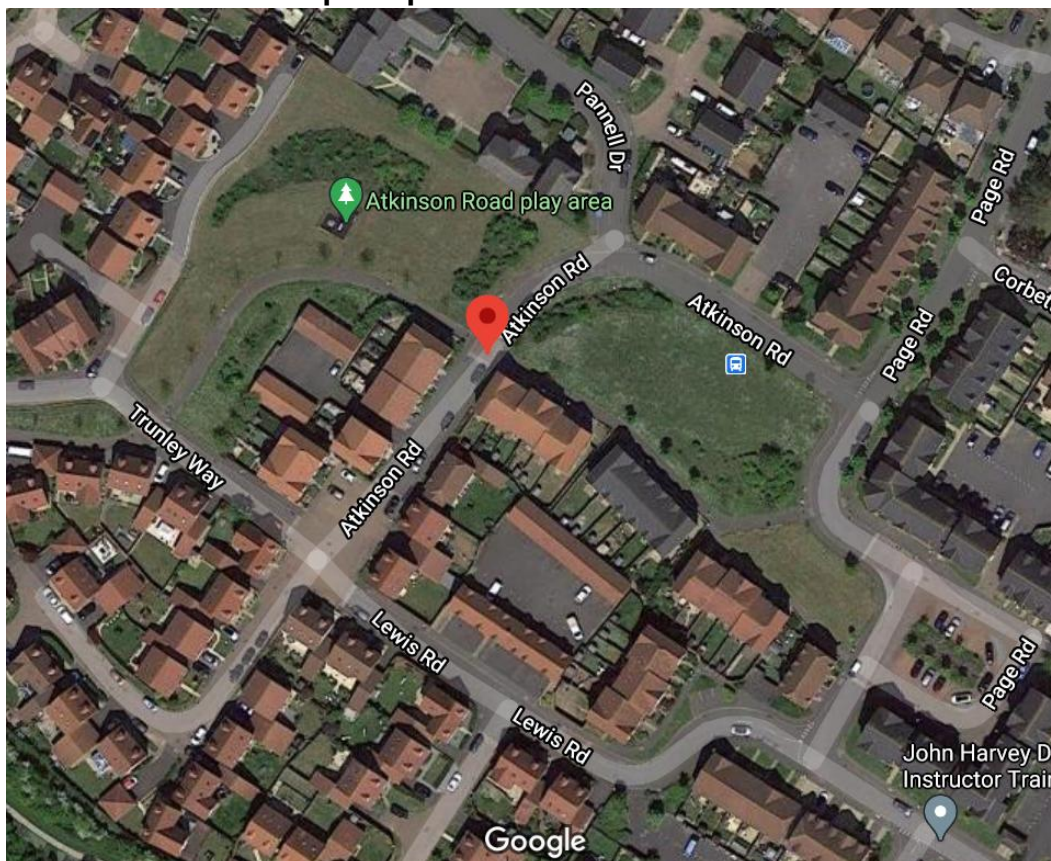
13 & 14. Open Space at Underwood and Dog Run



15. St Lukes Walk Open Space & Play Area



16. Atkinson Road open space



17. Campbell Road Open Space & Play Area



18 Corbett Road Open Space, Play Area & Verges along Kestrel Walk

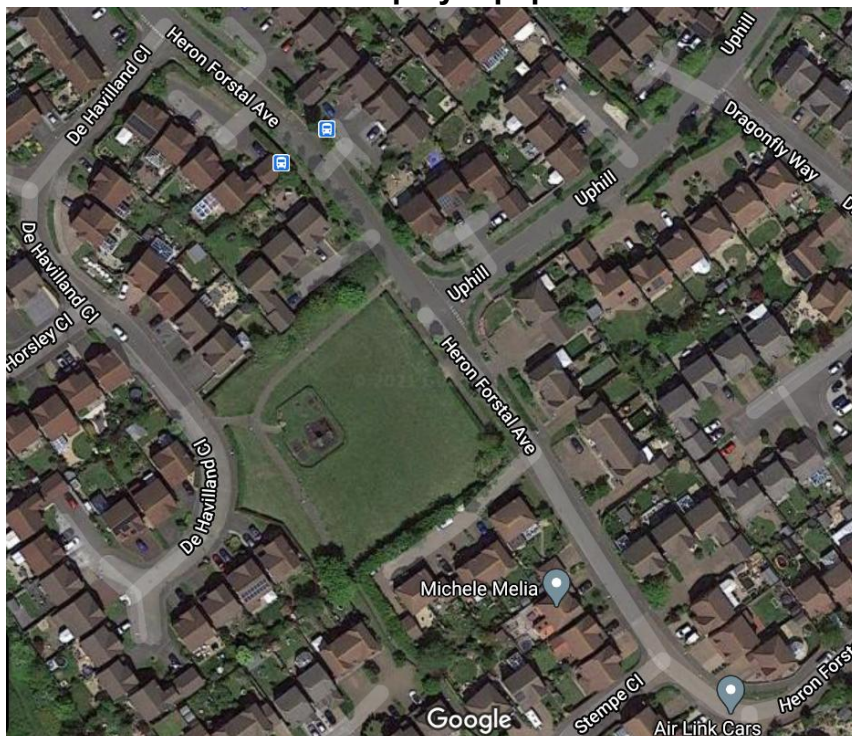


19. Harvest Way Open Space, Play Area and Wildflower Meadow



Area highlighted in black is now a wildflower meadow.

20 Heron Forstal Avenue play equipment



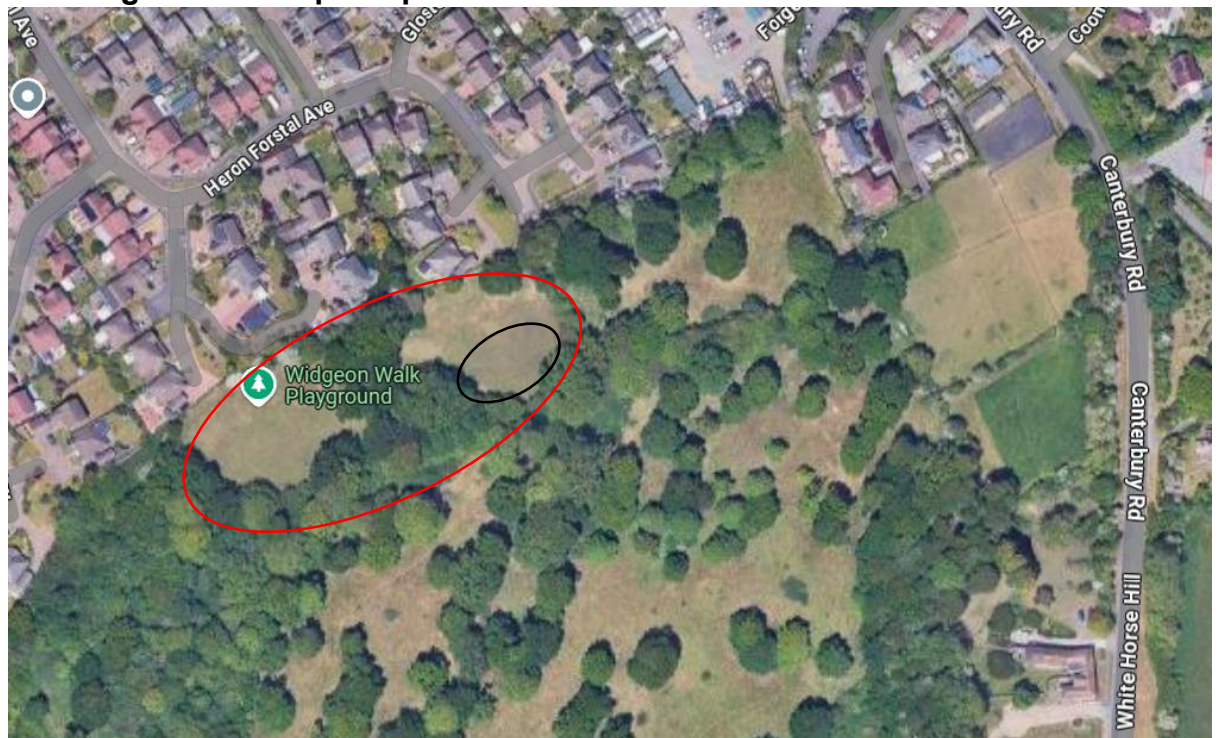
21. Millfield Outdoor Gym



22 Stombers Lane Open Space & Play Area



23 Widgeon Walk Open Space & Wildflower Meadow



Area highlighted in black is now a Wildflower Meadow.