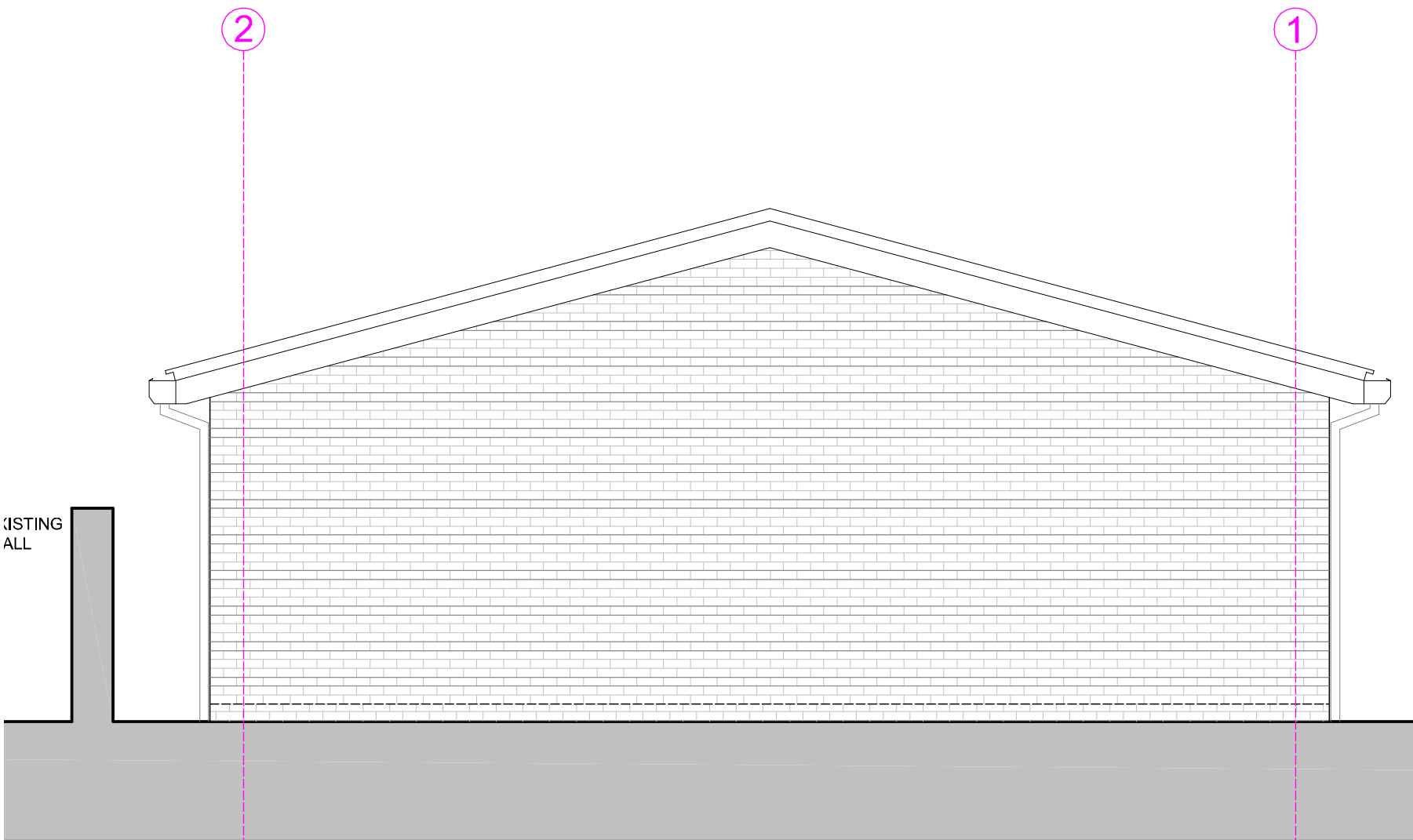
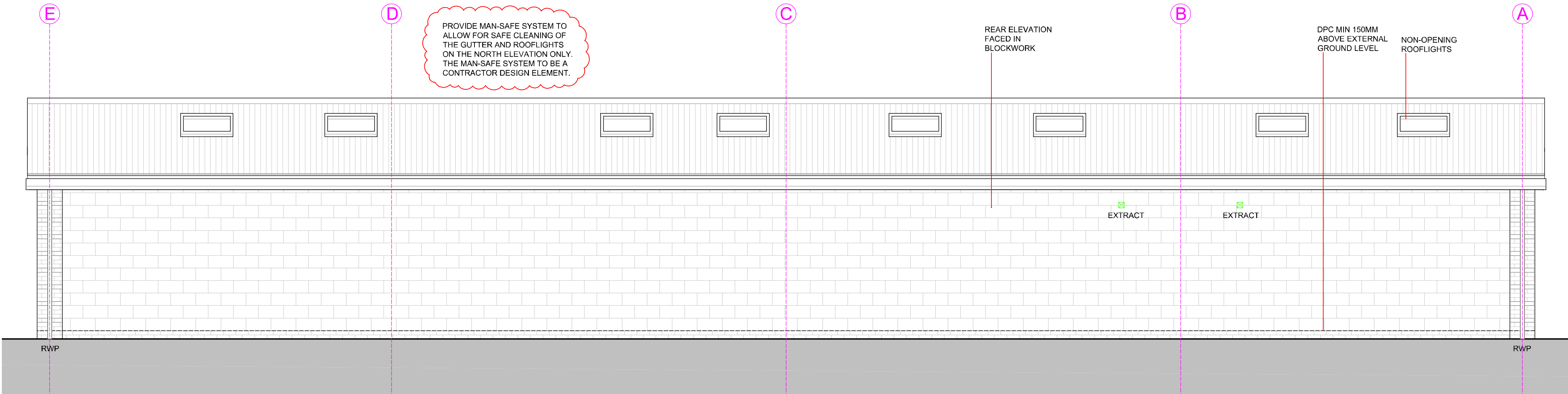


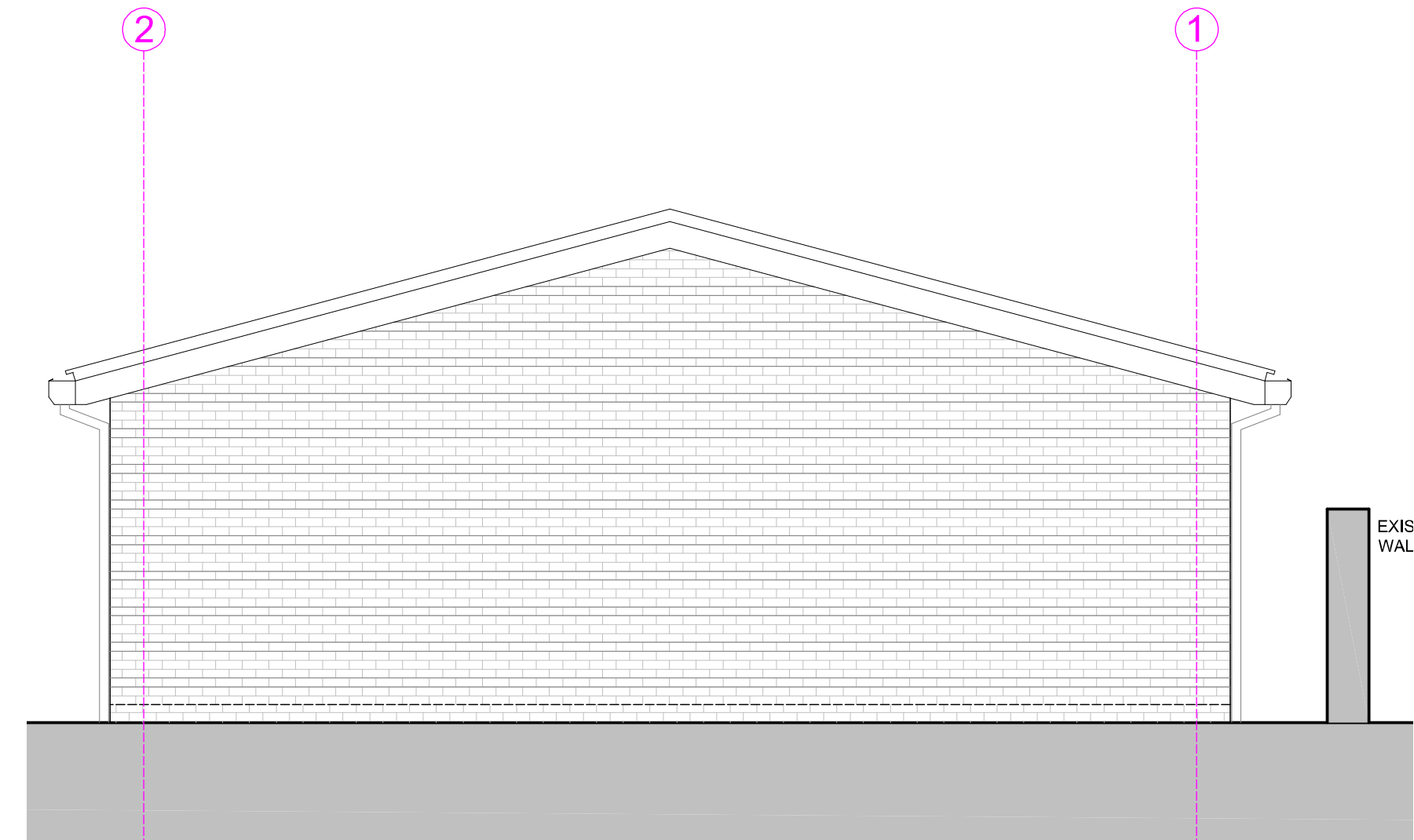
FRONT ELEVATION



SIDE ELEVATION



REAR ELEVATION



SIDE ELEVATION

Materials Schedule

Brick: Forterra 'Hampton Rural Blend' to match planning approved brick used St Georges Works apartments 1 to 24 adjacent to proposed TTC store

Roofing: Kingspan KS1000RW. Colour RAL 7016 'Anthracite Grey'

Rooflights: Kingspan KS1000 DLTR Day-Lite Trapezoidal

GENERAL
UNDER NO CIRCUMSTANCES SHOULD DIMENSIONS BE SCALED FROM THIS DRAWING "IF IN DOUBT ASK".
THIS DRAWING IS TO BE READ IN CONJUNCTION WITH ALL OTHER RELEVANT DRAWINGS
ALL WORKS TO COMPLY TO ALL RELEVANT BRITISH STANDARDS, CODES OF PRACTICES, EURO CODES AND BUILDING REGULATIONS.
THE USE OF ALL MANUFACTURED MATERIALS AND COMPONENTS, WHETHER SPECIFIED HERE OR AT THE CONTRACTORS / SUB-CONTRACTORS CHOICE IS TO BE STRICTLY IN ACCORDANCE WITH MANUFACTURER'S LITERATURE AND IN ACCORDANCE WITH ANY AGREEMENT CERTIFICATE. IT IS THE CONTRACTORS / SUB-CONTRACTORS RESPONSIBILITY TO ENSURE THAT ALL THE RELEVANT STANDARDS, MANUFACTURER'S LITERATURE AND INSTRUCTIONS, AND BSA CERTIFICATES TOGETHER WITH ALL THE DOCUMENTS REFERRED TO ABOVE ARE AVAILABLE ON SITE. WHERE THESE DRAWINGS DIFFER FROM ANY MANUFACTURER'S INFORMATION OR INSTRUCTIONS THIS IS TO BE DISCUSSED WITH THE ARCHITECT.
THE CONTRACTOR IS RESPONSIBLE FOR MAINTAINING THE STRUCTURAL INTEGRITY OF THE WORKS BY THE PROVISION OF ADEQUATE TEMPORARY WORKS.