

The background is a solid teal color. On the left side, there is a cluster of bubbles of various sizes, some overlapping, creating a textured, organic feel. The bubbles are a slightly lighter shade of teal than the background.

Your guide to UK Research and Innovation

UK Research
and Innovation

VALUES

As employees of UK Research and Innovation we will demonstrate and use the values to support each other to achieve success

COLLABORATION

- ▶ Our successes are based on strong internal and external, national and international collaborative relationships.
- ▶ We contribute to and celebrate our shared and each other's successes.
- ▶ We are focussed on our shared outcomes and impact, and are open and inclusive.
- ▶ We value diversity: we recognise, respect and value different working styles, and understand that a successful organisation is built on diverse talents from different backgrounds and perspectives.

INNOVATION

- ▶ We are creative and catalytic.
- ▶ We seek out and respond positively to opportunities for continued improvement and change.
- ▶ We are visionary and ambitious.
- ▶ We are flexible and agile, open to new ideas and change.
- ▶ We seek out opportunities to improve and develop our work.

INTEGRITY

- ▶ We are independent and objective, making decisions based on evidence, leading with integrity.

EXCELLENCE

- ▶ We place the highest value on expert knowledge of our areas of work and how it can be applied.
- ▶ We work in partnership with key stakeholders and the community to lead the research and innovation agenda in the UK.

Welcome to UK Research and Innovation



Welcome to UK Research and Innovation on its first official working day! For well over a year, we have been on the exciting and very hard-working journey to create this extraordinary organisation. I have enjoyed enormously the privilege of working with all of you to get us to this day.

UK Research and Innovation is a hugely important organisation at a very important time in our history. The UK is acknowledged around the world as being a world leading knowledge economy. It is vital that we maintain and grow this status at this exceptional time of global demographic, technological and political change.

The Industrial Strategy sets out clearly the importance of research and innovation for the health and growth of the economy. The four underpinning grand challenges in the Industrial Strategy of Healthy Ageing, Clean Growth, the Future of Transport, and Artificial Intelligence and Data Science are important now and will remain so for the foreseeable future. They are challenges that resonate with our partners in research and innovation around the world. These challenges, along with the commitment of an additional £7 billion for research and innovation by 2021/22 and government policy to increase UK research and development expenditure to 2.4% of GDP by 2027, provide an extraordinary backdrop to the creation of UK Research and Innovation.

We have a huge opportunity to work with all of our partners and stakeholders in the research and innovation communities to:

- Push the frontiers of human knowledge and understanding
- Deliver economic activity and social prosperity and
- Create social and cultural impact by supporting our society and others to become enriched, healthier, more resilient and sustainable

A lot of you have asked what success looks like. Success is delivering these objectives by investing public money wisely and this means: identifying, developing and supporting the most diverse range of talented people; working with others to provide the best environments for research and innovation to flourish; and engaging public and policy stakeholders with the amazing and inspiring people, projects and programmes that we support.

Success for us as an organisation is being open to new and ambitious ways of working and ensuring that we never cease to look for and implement ways to improve. We are building on the excellence of all of our individual councils, but the formation of UK Research and Innovation presents the opportunity to go even further.

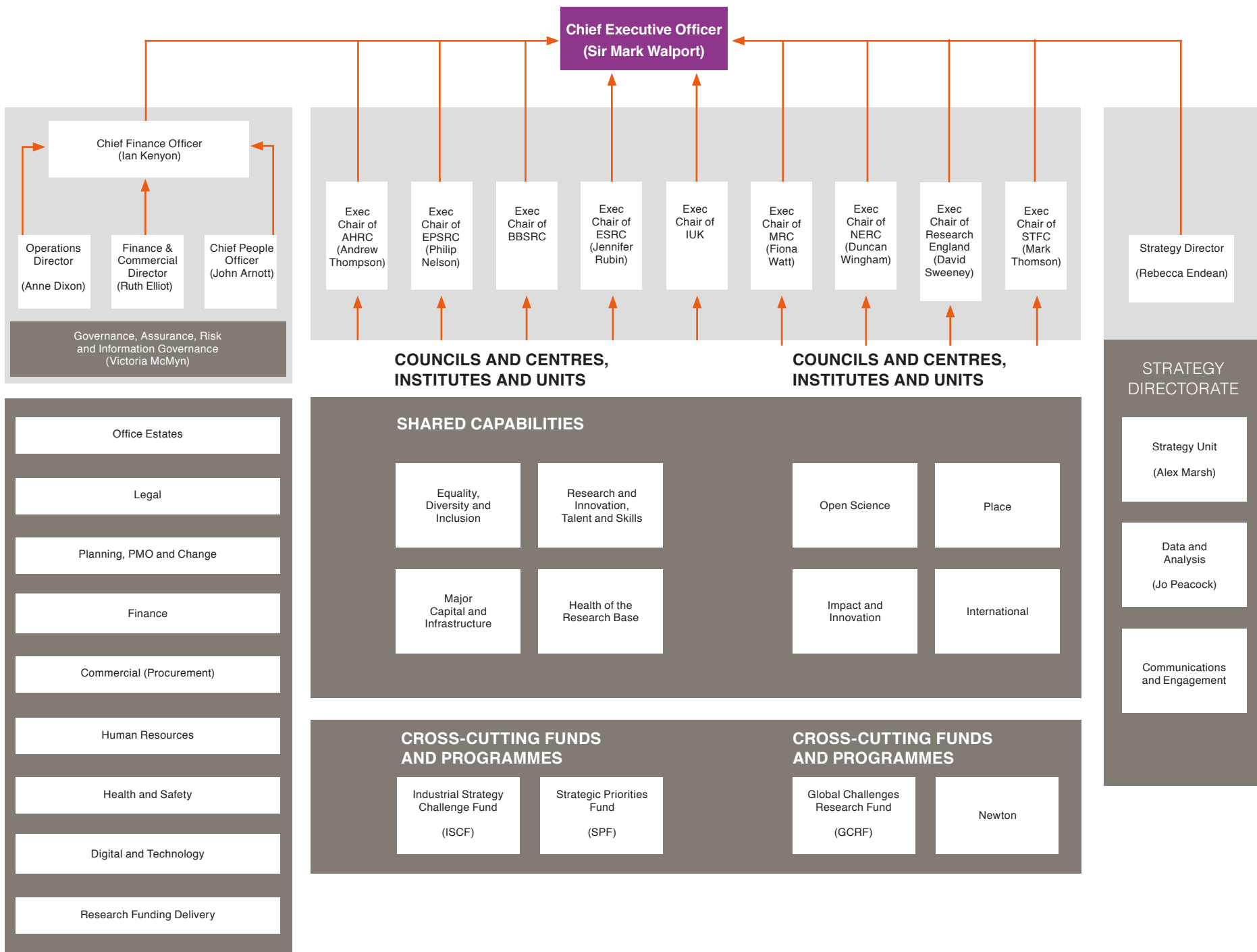
Innovation and collaboration must be at the heart of all of our work. We will do this by working collectively across UK Research and Innovation with researchers, innovators and entrepreneurs in academia, business and government to surface the most exciting ideas and help to develop these to fruition. We will work with partners, existing and new, across the world to tackle the challenges that we face individually and collectively. All of our work will be underpinned by integrity and excellence.

I would like to end this note of welcome by thanking each and every one of you for your effort, commitment and resilience in getting us to Day One of UK Research and Innovation. You each have a critical contribution to make to our future success. I am excited to have the opportunity to work with you.

From Sir John Kingman, the UK Research and Innovation Board, the Executive Board and me, I extend the warmest of welcomes to you to UK Research and Innovation.

Sir Mark Walport

Chief Executive, UK Research and Innovation



UK Research and Innovation - Leadership

Over the following pages you can find an outline of the role of leaders in shaping and driving UK Research and Innovation forward.



Professor Sir Mark Walport – Chief Executive Officer

Sir Mark was previously UK Government Chief Scientific Adviser and, before that, Director of the Wellcome Trust from 2003 to 2013. Until 2003, he was Professor of Medicine and Head of the Division of Medicine at Imperial College London.

Role in UKRI: Sir Mark is the first UK Research and Innovation Chief Executive; he works closely with the UKRI Chair, Sir John Kingman, and the research and innovation communities across the UK to shape the new organisation, delivering on the Industrial Strategy proposals for investing in science, research and innovation in the UK.



Ian Kenyon – Chief Finance Officer

Before joining UKRI, Ian was Chief Financial Officer and Executive Director, Corporate Resources at Cancer Research UK where he was responsible for the delivery of effective support and governance through the teams in Finance, Information Technology Services and Property.

Role in UKRI: Ian is working closely with Sir Mark, the UKRI Board and the Executive Chairs to ensure the new organisation operates efficiently and effectively as a unified body, enabling UKRI to maximise opportunities for the UK's world-class research and innovation base.



Sir John Kingman – Non-Executive Chair

Sir John was appointed as Chair of UK Research and Innovation on an interim basis in May 2016, to set up the new organisation in shadow form. In January 2018 he was officially appointed as Non-Executive Chair on a permanent basis.



Rebecca Endean – Director of Strategy

Rebecca Endean was previously Director of Research and Innovation Reform, Business and Science at the Department of Business, Energy and Industrial Strategy, with overall responsibility for the Higher Education and Research Bill that created UK Research and Innovation.

Role in UKRI: Rebecca leads the team who provide strategic advice to UK Research and Innovation, the Executive Team and the Board, and who have also been leading the work to allocate the increased funding secured in the recent Autumn Statement. Rebecca's teams also provide UK Research and Innovation with high quality communication and analytical support, and are responsible for secretariat support to the UKRI Board and Executive Committee.

Corporate Services

Reporting to Ian Kenyon, Chief Finance Officer

Corporate Services include HR, Finance, Legal, Commercial, Digital and Technology, Research Funding Delivery, Governance, Risk and Assurance, Health and Safety and Office Estates.

People in Corporate Services utilise expertise to inform and support our initiatives and innovation. They run and optimise day-to-day operations to enable us to be efficient and compliant.



Anne Dixon - Operations Director

Previously Chief Operating Officer at Innovate UK, Anne has also served as Head of Science Funding at the Medical Research Council, and Director of Customer Services at the National Trust.

Role in UKRI: Providing a central source of expertise in a range of operational functions including legal, Digital, Health and Safety, Research Funding Delivery, Office Estates and Operational Planning. Providing leadership for the Operations team.



Ruth Elliot - Finance and Commercial Director

Ruth was previously Chief Financial Officer at Innovate UK. She has also worked at Deloitte, the National Audit Office, the Department for Work and Pensions and the Department for Business, Energy and Industrial Strategy.

Role in UKRI: Providing a central source of professional expertise and services in Finance and Commercial (Procurement) as well as leadership for the Finance and Commercial teams.



John Arnott - Chief People Officer

Joining from UKSBS, John will serve as Chief People Officer for 12 months, officially starting on 1 May 2018.

Role in UKRI: Providing a central source of professional expertise and services in Human Resources and leadership for the HR team.

Executive Chairs

The Executive Committee consists of the Executive Chairs of each of the nine organisations that form part of UK Research and Innovation. It will be pivotal in managing issues of cross-council importance, such as governance of the Industrial Strategy Challenge Fund and developing our communications strategy.



Professor Andrew Thompson – Executive Chair of AHRC

Andrew is a historian of modern empire. He co-founded the University of Leeds' Institute of Colonial and Postcolonial Studies, and was previously Dean of its Faculty of Arts, as well as Pro Vice-Chancellor for Research.

Role in UKRI: Andrew is the first Executive Chair of AHRC as well as the International Champion for the Global Challenges Research Fund and the Newton Fund.



Professor Duncan Wingham - Executive Chair of NERC

Duncan is a former Chair in the Department of Space and Climate Physics at UCL, and was the university's Head of the Department of Earth Sciences. He was founder and Director of the NERC Centre for Polar Observation and Modelling, and Project Scientist on the Esa CryoSat-1 and CryoSat-2 satellite missions. He was appointed Chief Executive of NERC in 2012.

Role in UKRI: Duncan is the first Executive Chair of NERC as well as the Champion for RIFS and Open Science.



David Sweeney - Executive Chair of Research England

David joined HEFCE in 2008 as Director (Research, Innovation and Skills) and led the development and implementation of the first Research Excellence Framework including the new impact agenda element. He is currently responsible for research policy and funding, knowledge exchange and university/business relations.

Role in UKRI: David is the first Executive Chair of Research England and leads delivery of the UKRI Research and Innovation Place agenda. He is also the Champion for Place and Major Capital and Infrastructure.



Professor Fiona Watt - Executive Chair of MRC

Fiona obtained her first degree from the University of Cambridge and her DPhil, in cell biology, from the University of Oxford. Following postdoctoral training at MIT, she established her first research group at the Kennedy Institute for Rheumatology and then spent 20 years at the CRUK London Research Institute (now part of The Francis Crick Institute).

Role in UKRI: Fiona is the first Executive Chair of MRC.



Professor Jennifer Rubin - Executive Chair of ESRC

Jennifer was previously Director of the Policy Institute at King's College London where she was also Professor of Public Policy. Throughout her career, her focus has been on bringing rigorous social science to bear on pressing policy and practice challenges, using research to inform and advance improvements in outcomes.

Role in UKRI: Jennifer is the first Executive Chair of ESRC as well as the Champion for Equality, Diversity and Inclusion.



Professor Philip Nelson - Executive Chair of EPSRC

Philip served from 2005-2013 as Pro Vice-Chancellor of the University of Southampton. He holds the post of Professor of Acoustics and has personal research interests in the fields of acoustics, vibrations, signal processing, control systems and fluid dynamics.

Role in UKRI: Philip will serve as the Executive Chair of EPSRC until October 2018. He is also the Champion for Research and Innovation Talent and Skills.



Professor Melanie Welham - Executive Chair of BBSRC

Professor Melanie Welham has been selected to be the Executive Chair of the Biotechnology and Biological Sciences Research Council (BBSRC).

She has been the interim Chief Executive for BBSRC, and prior to that was the Executive Director, Science for BBSRC.

Professor Welham has also worked at the University of Bath as Professor of Molecular Signalling and is a leading researcher in molecular signalling and stem cell science.



Professor Mark Thomson - Executive Chair of STFC

Mark is a Professor in Experimental Particle Physics based at the Cavendish Laboratory, University of Cambridge and has an extensive background researching high energy particle physics.

Key areas of focus: Mark is the first Executive Chair of STFC. He will also lead the delivery of the UKRI Research and Innovation Infrastructure Roadmap and is the champion for Impact and Innovation.

Executive Chair of Innovate UK

Further details on the recruitment of the Executive Chair post will be available in the near future.

UK Research and Innovation

3,900
RESEARCH AND
BUSINESS GRANTS
ISSUED EVERY
YEAR

2,400
BUSINESS-LED
COLLABORATIVE
PROJECTS AND
OVER 200
KNOWLEDGE TRANSFER
PARTNERSHIPS

OVER £6 BILLION
IN COMBINED BUDGET PER YEAR

151
UNIVERSITIES
RECEIVING
RESEARCH
FUNDING

38
INSTITUTES,
LABORATORIES,
UNITS, CAMPUSES
AND INNOVATION
CATAPULTS

UK Research and Innovation Board

Sir Peter Bazalgette

Sir Peter is a leading figure in the creative industries, and has recently undertaken a review of the creative industries for BEIS and DCMS. He is Executive Chairman of ITV, a member of the Advisory Board of Bartle Bogle Hegarty, and Chair of HM Government's Holocaust Memorial Foundation.

Professor Julia Black

Professor Black is Pro-Director for Research at the London School of Economics and Political Science (LSE), and from 2016-17 served as LSE's Interim Director. She has been actively involved with developing LSE's research collaborations with STEM disciplines, particularly around health and data science.

Professor Sir Leszek Borysiewicz

Sir Leszek is a former Vice-Chancellor of the University of Cambridge and was Chief Executive of the Medical Research Council from 2007-2010. From 2001 to 2007 he served as Principal of the Faculty of Medicine and later as Deputy Rector at Imperial College London.

Lord (John) Browne of Madingley

Lord Browne is the Executive Chairman of L1 Energy, as well as Chairman of Huawei UK, Stanhope Capital and the Accenture Global Energy Board. He is the former CEO of BP Plc, which he joined as a university apprentice in 1966. He is Chairman of The Francis Crick Institute, and is a Fellow and past President of the Royal Academy of Engineering.

Professor Sir Ian Diamond

Sir Ian has been Principal and Vice-Chancellor of the University of Aberdeen since April 2010, before which he held the position of Chief Executive Officer at the Economic and Social Research Council. He was also Chair of the RCUK Executive Group.

Fiona Driscoll - Audit Committee Chair

Fiona has had a wide-ranging executive career, latterly as Director, Marketing, Corporate Strategy and Business Development for QinetiQ, and as Strategy Director for Hedra, the management consultancy. As a non-executive, she has held a varied portfolio which has spanned the private, public and third sectors.

Professor Alice Gast

Professor Gast became President of Imperial College London in September 2014. Prior to her appointment at Imperial, she was President of Lehigh University in Pennsylvania. From 2001-2006 she served as Vice-President for Research and Associate Provost and Robert T. Haslam Chair in Chemical Engineering at the Massachusetts Institute of Technology.

Sir Harpal Kumar

Sir Harpal has held various Chief Executive roles including at Cancer Research UK, The Papworth Trust and the Nexan Group. He is a Trustee of The Francis Crick Institute and a member of the National Cancer Transformation Board. He also chairs the National Cancer Advisory Group. Sir Harpal was knighted in the 2016 New Year's Honours List for services to cancer research.

Professor Max Lu

Professor Lu is President and Vice-Chancellor of the University of Surrey. He was Provost and Senior Vice-President at the University of Queensland where he spent nearly 30 years. He is a member of the Prime Minister's Council on Science and Technology, and also served on the Boards of the National Physical Laboratory and Universities UK.



Vivienne Parry

A scientist by training, Vivienne hosts medical programmes for Radio 4; writes widely on health; presents films; facilitates many high level conferences and debates; and trains young researchers. She also has a part-time role as head of engagement at Genomics England which is delivering the 100,000 Genomes Project.

Vivienne has been a member of the Medical Research Council since 2009, and is Vice Chairman of Council for University College London.

Mustafa Suleyman

Mustafa Suleyman is co-founder and Head of Applied AI at DeepMind, where he is responsible for integrating the company's technology across a wide range of Google products. In February 2016 he launched DeepMind Health, which builds clinician-led patient-centered technology in the NHS. Mustafa was Chief Product Officer at DeepMind Technologies before the company was bought in 2014 by Google in its largest European acquisition to date.

Lord (David) Willetts

Lord Willetts was Minister for Universities and Science from 2010-14. He worked in HM Treasury and the Number 10 Policy Unit before becoming Director of the Centre for Policy Studies. He is Executive Chair of the Resolution Foundation, a Council Member of the Institute for Fiscal Studies, a Governor of the Ditchley Foundation and a Board Member of the National Institute of Economic and Social Research.

Professor Dame Sally Davies

Dame Sally was appointed Chief Medical Officer for England and Chief Medical Advisor to the UK Government in March 2011. She is an independent advisor to the UK Government on medical matters, with particular responsibilities regarding public health. In 2013, Dame Sally became a Non-Executive Director of Genomics England Ltd which is delivering the 100,000 Genomes Project.

Councils

UK Research and Innovation brings together the seven Research Councils, Innovate UK and a new organisation, Research England.



Arts & Humanities
Research Council

Arts and Humanities Research Council (AHRC)

AHRC funds world-class, independent researchers engaged in a wide range of subjects. Their research provides social and cultural benefits and contributes to the economic success of the UK as well as to the culture and welfare of societies around the globe.



Biotechnology and Biological Sciences Research Council (BBSRC)

BBSRC invests in world-class bioscience research and training. The research it invests in is helping society to meet major challenges, including food security, green energy and healthier, longer life. This work underpins important UK economic sectors such as farming, food, industrial biotechnology and pharmaceuticals.



Economic and Social Research Council (ESRC)

ESRC is the UK's largest funder of research on the social and economic questions facing us today. The research it supports shapes public policy and contributes to making the economy more competitive, as well as giving people a better understanding of 21st century society.





EPSRC

Investing in research for
discovery and innovation

Engineering and Physical Sciences Research Council (EPSRC)

EPSRC's vision is for the UK to be the best place in the world to research, discover and innovate; and is building the knowledge and skills base needed to address the scientific and technological challenges facing the nation. Its portfolio covers a vast range of fields – from healthcare technologies to structural engineering, manufacturing to mathematics, advanced materials to chemistry.

Innovate UK

Innovate UK

Innovate UK works with people, companies and partner organisations to find and drive the science and technology innovations that will grow the UK economy. It drives growth by working with companies to de-risk, enable and support innovation.

MRC

Medical
Research
Council

Medical Research Council (MRC)

MRC is at the forefront of scientific discovery to improve human health. The scientists it supports tackle some of the greatest health problems facing humanity in the 21st century, from the rising tide of chronic diseases associated with ageing to the threats posed by rapidly mutating micro-organisms.



Natural Environment Research Council (NERC)

NERC is the driving force of investment in environmental science. The leading research, skills and infrastructure it supports help solve major issues and bring benefits to the UK, such as affordable clean energy, better air quality, and more resilient infrastructure.



Research England

Research England is a new council within UK Research and Innovation. Taking forward the England-only responsibilities of HEFCE in relation to research and knowledge exchange, it will create and sustain the conditions for a healthy and dynamic research and knowledge exchange system in English universities.



Science and Technology Facilities Council (STFC)

STFC is a world-leading multi-disciplinary science organisation. The research it supports seeks to understand the universe from the largest astronomical scales to the tiniest constituents of matter, yet creates impact on a very tangible, human scale.





UK Research and Innovation Case Studies

UKRI-supported science, strategic partnerships and funded research are benefitting society, our economy and the world we live in. These case studies are examples of the impact our work is having.

Knowledge

- The NERC-supported Rapid Climate Change programme (RAPID) was set up to understand the causes of sudden changes in the Earth's climate. For the last 10 years it has been using ground-breaking equipment to monitor the circulation of Atlantic Ocean currents. Changes to these currents could lead to significant temperature changes across Europe.
- Over 500,000 people have contributed samples such as blood and saliva to the UK BioBank. Over many years the BioBank, funded primarily by the MRC and the Wellcome Trust, will build into a powerful national resource to help scientists discover why some people develop particular diseases and others do not.
- An open city data platform developed with Innovate UK support by nquiringminds, a smart cities technology business, is helping UK cities to work in a more connected way. Already being used in Liverpool, Southampton and Cambridge, the platform gathers data in real time from different sources and allows cities to capture, secure, analyse the data, in order for them to run smarter.

Economy

- The start-up company Reach Robotics has closed a \$7.5 million financing deal for the development of gaming robots, after the success of MekaMon – a battle-bot controlled with a smartphone. Thanks to a partnership with AHRC-supported researchers at the University of the West of England, the company was able to develop robust prototypes based on feedback from users testing and informing the design process, with research input at every stage.
- Unilever used research expertise at Sci-Tech Daresbury, led by STFC, to spot bottlenecks in one of its factories' filling lines. This led to a potential 10 per cent improvement in line productivity and increased sales of around £37 million per year gross.
- Improved global climate models developed with the Met Office has reduced storm-related losses for the insurance industry by £62-130 million per year. Improved ability to assess and price risk in the future could help make insurance more affordable.



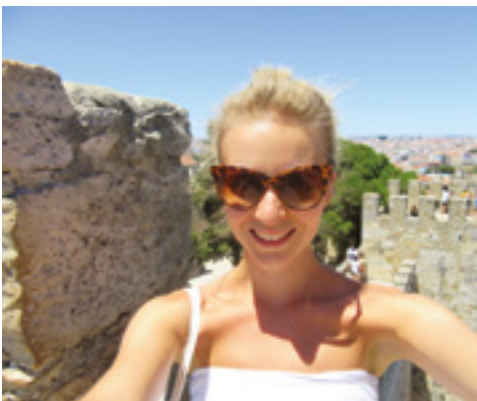
A vibrant yellow tang fish is the central focus, swimming towards the left. It has a bright yellow body with a white stripe along its side and a prominent yellow eye. The background is a lush, colorful coral reef with various shades of orange, red, and yellow. The foreground is a sandy ocean floor with small, light-colored pebbles.

Society

- Research into the eyesight of tropical fish led to a new tool for early diagnosis of people at risk of age-related macular degeneration, expected to affect an estimated 196 million people globally by 2020.
- Research at the ESRC Centre for Climate Change Economics and Policy changed policy for the UK's flood re-insurance scheme Flood Re, specifically linking insurance to climate change adaptation – potentially affecting more than five million flood-risk properties in the UK.
- Ultrahaptics, a company formed to bring to market technology developed with EPSRC support at the University of Bristol, has received over £10 million in investor backing to grow globally. Using the magic of sound waves, the technology makes it possible to manipulate things without touching them, with potential for use across sectors such as healthcare, manufacturing and gaming.

Getting to know our people

These profiles signal the beginning of our journey of getting to know each other. Where are we based, what are we working on, what are those funny little things that make us... well, us? Over the course of the next few months you will be able to read more about our colleagues across UK Research and Innovation.



Carla Yorukoglu - MRC

If you could do another job for just one day, what would it be?

"I would love to have the opportunity to combine some of my passions, so working in South America for the Sloth Conservation Foundation for a day would be perfect!"



Gill Gray - AHRC

What has been your proudest moment outside of work?

"Each time I look at my two children, I burst with pride."



Rachael Brown - EPSRC

What do you think we are going to do well at UKRI?

"I think working across all the organisations within UKRI will provide the opportunity to streamline certain processes and gain a better understanding of the different research communities and stakeholders."



Dawn Manser - Innovate UK

Can you tell us one thing people don't know about you?

"My Dad used to have a vintage fire engine (it went 7 miles to the gallon!) so I spent many weekends as a child going to events all around the country in our family fire engine."



Tracy Allen - NERC

What has been your proudest moment at work?

"Visiting the RRS Discovery when it sailed down the Thames and docked alongside HMS Belfast in December 2015."

Find out more about our colleagues across UK Research and Innovation on the Information Hub under 'UKRI People'

Contacts page

- ▶ **For general enquiries ring**
01793 411500
- ▶ **For general information and news visit**
www.ukri.org or **Twitter** @UKRI_News
- ▶ **For the latest staff news and information visit the Information Hub**
www.ukri.org/staff

HR/Pay

- ▶ **HR/Pay/Sick leave**
Please contact your local HR team
For any HR questions please speak to your local teams
For general information please visit the UKRI Information Hub.

Finance

- ▶ For any enquiries please contact your local Finance team

UKRI CEO's Office

- ▶ Email ceo@ukri.org

UKRI Communications

- ▶ **General enquiries and press**
communications@ukri.org
- ▶ **Internal communications and questions**
questions@ukri.org

UK SBS Oracle system and support

- ▶ **Oracle self-service portal**
<https://portal.ssc.rcuk.ac.uk>
- ▶ **KnowledgeBase**
<https://moss.ssc.rcuk.ac.uk>
- ▶ **UK SBS ISS Service portal**
<https://uksbs.landesk.com>
- ▶ **UK SBS Service Desk**
01793 867000

UK Research and Innovation main offices

Here you can find contact details for our main offices. Contact details for the new London office will be available on the Information Hub soon. To contact facilities and offices not included in these pages please refer to the relevant council website that can be found below.

UK Research and Innovation Head Office Swindon

- ▶ **Polaris House Switchboard**
01793 411 500 / JBOS.Reception@bbsrc.ac.uk
- ▶ **Meeting rooms**
JBOS.MeetingRooms@bbsrc.ac.uk
- ▶ **Car Parking**
JBOS.JBOSCarParking@bbsrc.ac.uk
- ▶ **People Line (Emergency number in case of weather related office closures)**
08007471515
- ▶ **IT Support**
ISSServiceDesk@uksbs.co.uk / tel: ext 8000
- ▶ **For UKRI Central Services**
IThelpdesk@ukri.org / tel: ext 6300

AHRC

- ▶ **For all enquiries**
+44 (0)1793 41 6000 / enquiries@ahrc.ac.uk
- ▶ **For further information visit**
<https://ahrc.ukri.org>

BBSRC

- ▶ **For all enquiries**
+44 01793 413200
- ▶ **For further information visit**
<https://bbsrc.ukri.org>

ESRC

- ▶ **For all enquiries**
01793 413000 / esrcenquiries@esrc.ac.uk
- ▶ **For further information visit**
<https://esrc.ukri.org>

EPSRC

- ▶ **For all enquiries**
01793 444000 (main switchboard)
- ▶ **For further information visit**
<https://epsrc.ukri.org>

Innovate UK

- ▶ **For all enquiries**
0300 321 4357
- ▶ **For further information visit**
<https://innovateuk.ukri.org>

MRC Swindon and London Head Offices

- ▶ **For all enquiries**
01793 416 200
- ▶ **IT**
IThelpdesk@headoffice.mrc.ac.uk
- ▶ **For all other MRC facilities visit**
<https://mrc.ukri.org>

NERC (Swindon)

- ▶ **For all enquiries**
+44 (0)1793 411 500
- ▶ **For NERC offices and facilities please visit**
<https://nerc.ukri.org>

Research England (Bristol)

- ▶ **For all enquiries**
0117 931 7304 / researchengland@hefce.ac.uk
- ▶ **For further information visit**
<https://re.ukri.org>

STFC (Swindon)

- ▶ **For all enquiries**
+44 (0)1793 442 000 / enquiries@stfc.ac.uk
- ▶ **For all other STFC offices and facilities visit**
<https://stfc.ukri.org>

Notes



For more information please visit
the UKRI Information Hub:

www.ukri.org/staff