

THE DETAILS DEPICTED ON THIS DRAWING ARE THE COPYRIGHT TO CREATE CONSULTING ENGINEERS LTD AND MAY NOT BE REPRODUCED WITHOUT PERMISSION. THIS DRAWING MUST NOT BE RE-ISSUED, LOANED OR COPIED WITHOUT THE CONSENT. ERRORS OMISSIONS AND DISCREPANCIES SHOULD BE REPORTED TO THE ORIGINATOR IMMEDIATELY.

ALL DIMENSIONS TO BE CHECKED BEFORE SITE OR OFF-SITE FABRICATION BY THE CONTRACTOR, HIS SUB-CONTRACTOR OR SUPPLIER.


DO NOT SCALE PLANS - USE FIGURE OR GRID DIMENSIONS WHERE GIVEN. ANY DEVIATION FROM THE DRAWING IS TO BE REPORTED TO THE ORIGINATOR IMMEDIATELY.

STRUCTURE, STRUCTURAL MEMBERS & GEOTECHNICAL INVESTIGATIONS ARE TO BE CARRIED OUT & APPROVED BY THE APPOINTED STRUCTURAL ENGINEER. ANY DEVIATIONS TO THESE ELEMENTS ARE TO BE REPORTED TO THE APPOINTED CONSULTANT IMMEDIATELY.

IF IN DOUBT ASK !

NOTES:


- G




WHITECROFT LIGHTING ACS INDOOR IP65 30 WATT 4000K
- 2CS




WHITECROFT LIGHTING COMMAND EVO SWITCHING DOWN (TO BE SELECTED AS A RECESSED OR SURFACE MOUNTED DETECTOR DEPENDENT ON CEILING FINISH)
- 2CS



WHITECROFT LIGHTING COMMAND EVO SWITCHING DOWN (TO BE SELECTED AS A RECESSED OR SURFACE MOUNTED DETECTOR DEPENDENT ON CEILING FINISH)
- J



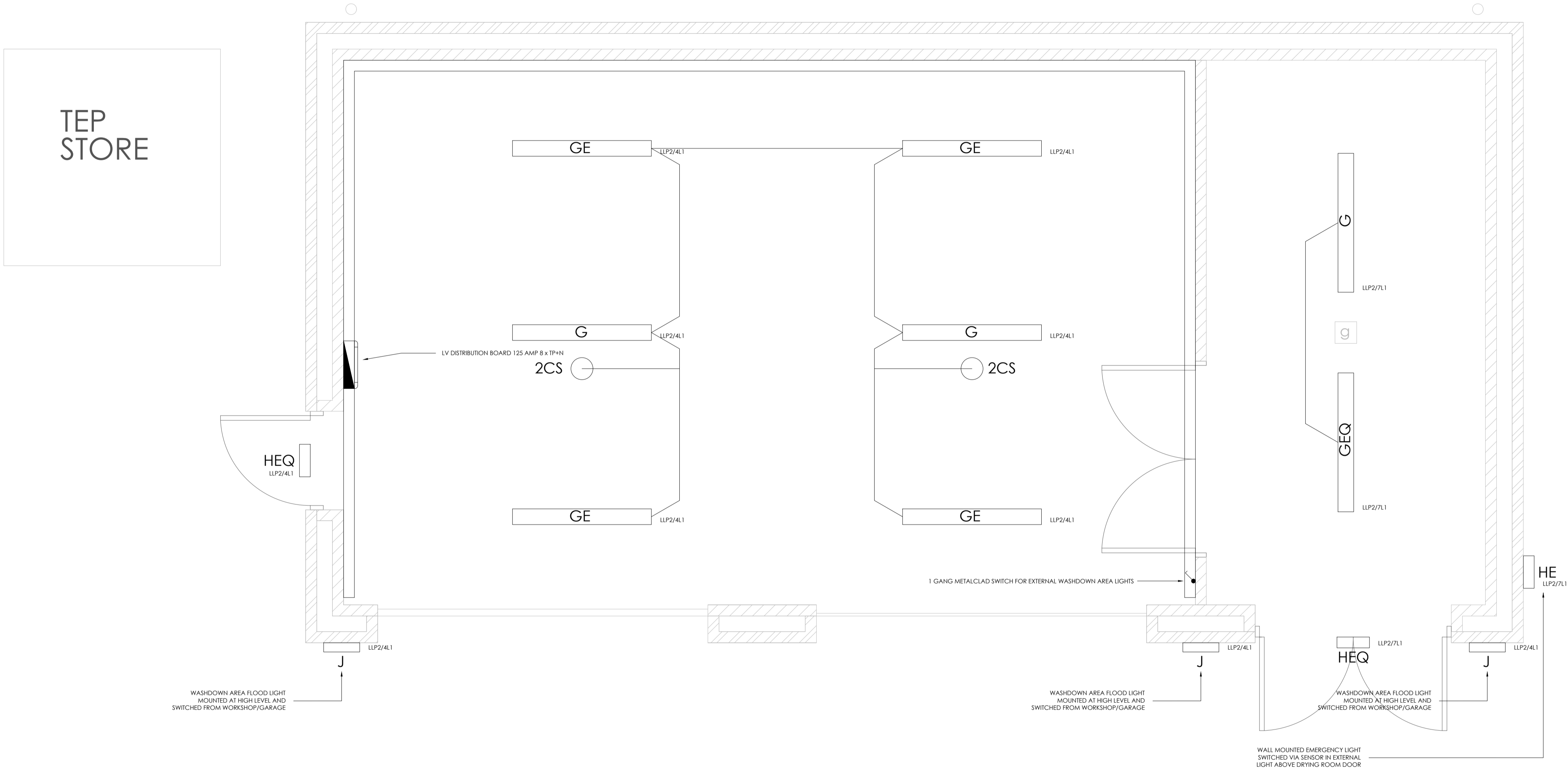
WHITECROFT LIGHTING SUBFLOOD VALUED F44
- H



WHITECROFT LIGHTING ROLLO IP65 28 WATT WITH INTEGRAL SENSOR
- Q

LIGHT FITTINGS WITH A 'Q' SUPPLY HAVE INTEGRAL SENSORS
- E

LIGHT FITTINGS WITH A 'E' SUPPLY ARE EMERGENCY FITTINGS



DESIGNERS RESIDUAL HAZARDS MECHANICAL, ELECTRICAL & PUBLIC HEALTH	
IN ADDITION TO THE HAZARDS / RISKS NORMALLY ASSOCIATED WITH THE TYPES OF WORK DETAILED ON THIS DRAWING, THE FOLLOWING DESIGNERS RESIDUAL HAZARDS HAVE BEEN IDENTIFIED AND SHOULD BE ADDRESSED/MANAGED BY THE CONTRACTOR. ANY HAZARDS THAT CANNOT BE ADDRESSED AND REMOVED SHALL BE CARRIED FORWARD AS PART OF THE HEALTH AND SAFETY HANDOVER DOCUMENTATION.	
HAZARD	DESCRIPTION
1	N/A
2	N/A
IT IS ASSUMED THAT ALL WORKS WILL BE CARRIED OUT BY A COMPETENT CONTRACTOR WORKING, WHERE APPROPRIATE, TO AN APPROVED RISK ASSESSMENT AND METHOD STATEMENT.	

C02	28/11/2017	CIRCUIT IDENTIFICATION ADDED. ISSUED FOR TENDER	NGS	JDB
REV	DATE	DESCRIPTION	DRAWN	CHECKED

CLIENT
MARITIME & COASTGUARD AGENCY

PROJECT
SHRUB END CLINIC
ICENI WAY
COLCHESTER

DRAWING TITLE
PROPOSED WORKSHOP/GARAGE
LIGHTING LAYOUT
SHEET 01 OF 01

DATE	DESIGNED	DRAWN	CHECKED	SCALE(S)
17/11/2017	NGS	NGS	JDB	1:25 @A1

create
CONSULTING ENGINEERS LTD

FOR TENDER									
PROJ	ORIG	ZONE	LEVEL	TYPE	ROLE	CLASS	PRESENT	NUMBER	STATUS
1321	CCE	00	GF	DR	E	70	P	0602	D2